

Spectrum Test Report

Sample :
Specification : EKF5496HL90
Sample No. : 16
Manufacturer :

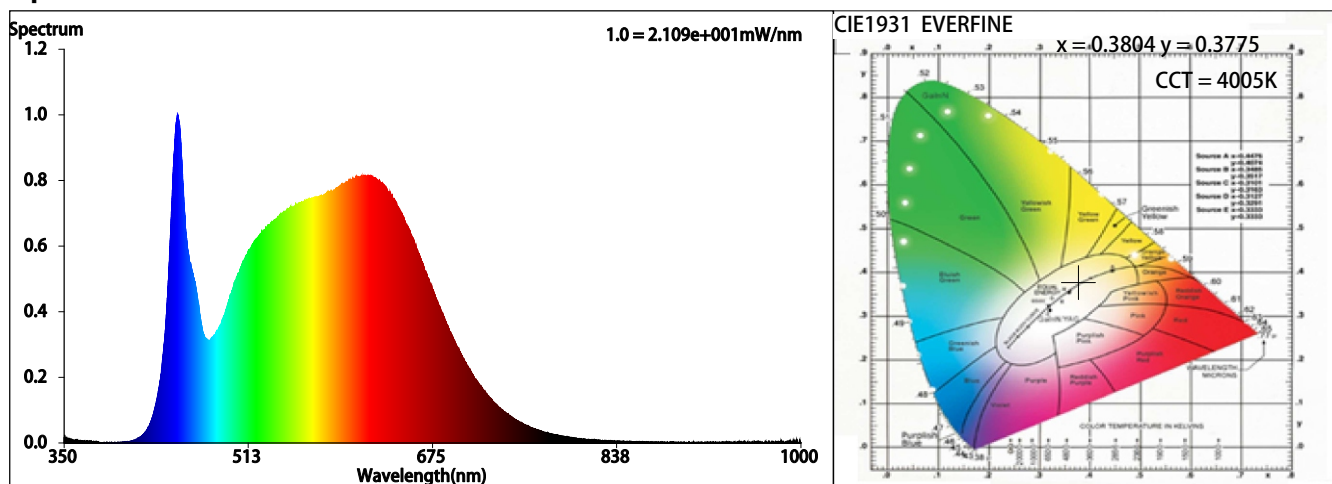
Date : 2022-04-24 11:26:40
Sam. Status :
Instrument : HAAS-2000(EVERFINE)
Test by : QC
Assessor : damin

Test Condition

Temperature : 25.3Deg
WL Range : 350nm-1000nm
Test Mode : Accuracy Test

RH : 55.0%
IP : 50932 (78%)
T : 281 ms
Sensitivity : High

Spectrum



Colorimetric Parameters

Chromaticity Coordinate: $x = 0.3804$ $y = 0.3775$ / $u' = 0.2248$ $v' = 0.5019$ ($duv=3.69e-04$)

CCT= 4005K Prcp WL: $L_d=578.8\text{nm}$ Purity=27.5%

Peak WL: $L_p=450\text{nm}$ FWHM: $=22.7\text{nm}$ Ratio: R=19.7% G=76.3% B=4.0%

Render Index: $R_a = 92.9$ TM30: $R_f=92$ $R_g=100$

$R_1=93$ $R_2=95$ $R_3=95$ $R_4=93$ $R_5=92$ $R_6=92$ $R_7=95$

$R_8=88$ $R_9=68$ $R_{10}=87$ $R_{11}=93$ $R_{12}=71$ $R_{13}=94$ $R_{14}=97$ $R_{15}=91$

Photometric & Radiometric Parameters

Flux = 1072.5 lm Eff. : 96.82 lm/W $F_e = 3.7061\text{W}$

(EQE): 373.31%

Electrical parameters

$V = 24.00\text{V}$ $I = 0.4616\text{A}$ $P = 11.08\text{W}$ PF = 1.000

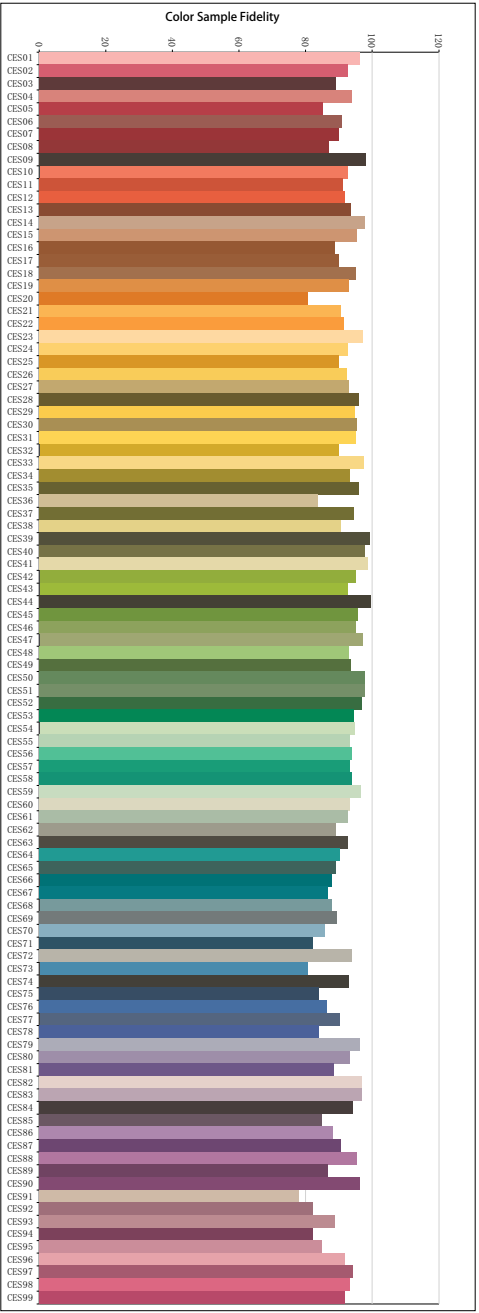
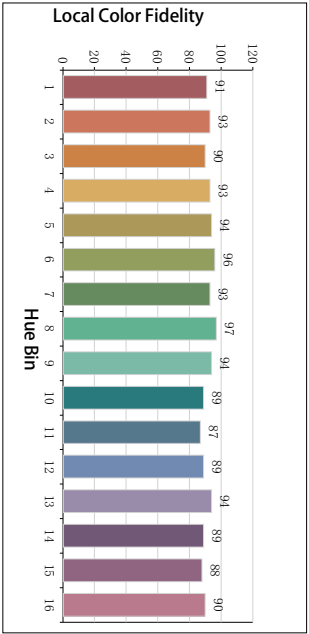
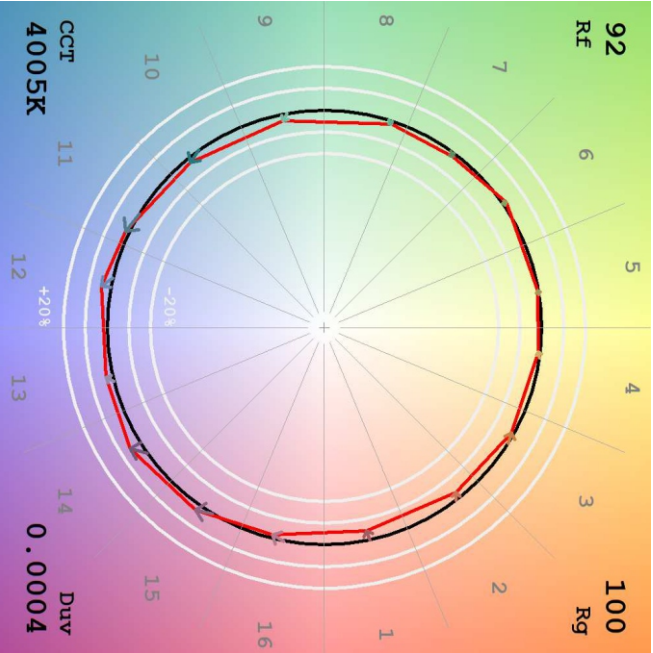
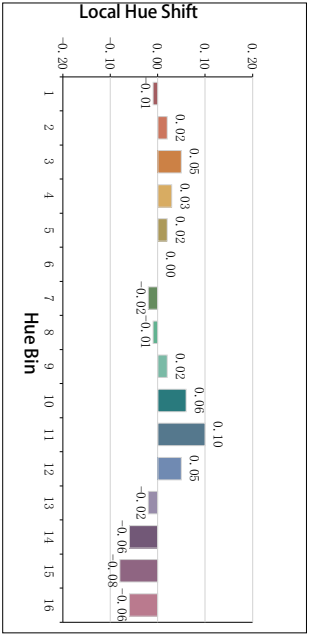
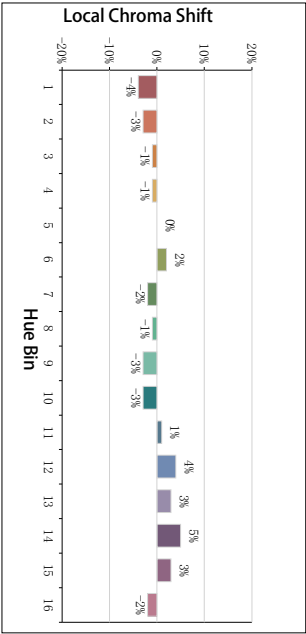
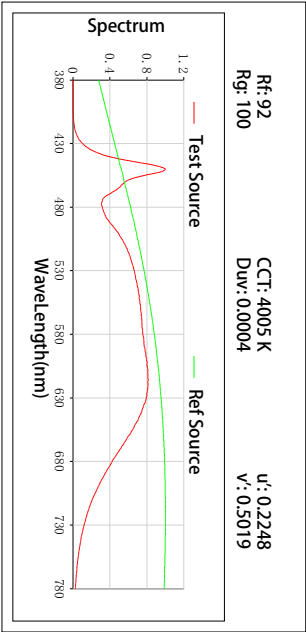
Freq=0.00 Hz

GBT5702

$R_a = 93$

$G_a = 0.98$

TM30



All Rf:

Rf1 = 96.4	Rf2 = 92.8	Rf3 = 89.2	Rf4 = 93.9
Rf5 = 85.3	Rf6 = 90.8	Rf7 = 90.0	Rf8 = 86.9
Rf9 = 98.1	Rf10 = 92.6	Rf11 = 91.3	Rf12 = 91.8
Rf13 = 93.7	Rf14 = 97.8	Rf15 = 95.5	Rf16 = 88.9
Rf17 = 90.1	Rf18 = 95.2	Rf19 = 93.0	Rf20 = 80.6
Rf21 = 90.7	Rf22 = 91.6	Rf23 = 97.2	Rf24 = 92.7
Rf25 = 90.0	Rf26 = 92.4	Rf27 = 93.1	Rf28 = 96.0
Rf29 = 94.8	Rf30 = 95.4	Rf31 = 95.3	Rf32 = 89.9
Rf33 = 97.5	Rf34 = 93.4	Rf35 = 96.0	Rf36 = 83.6
Rf37 = 94.6	Rf38 = 90.6	Rf39 = 99.3	Rf40 = 97.7
Rf41 = 98.7	Rf42 = 95.0	Rf43 = 92.6	Rf44 = 99.6
Rf45 = 95.8	Rf46 = 95.0	Rf47 = 97.0	Rf48 = 93.1
Rf49 = 93.6	Rf50 = 97.8	Rf51 = 97.8	Rf52 = 96.9
Rf53 = 94.4	Rf54 = 94.7	Rf55 = 93.5	Rf56 = 93.9
Rf57 = 93.3	Rf58 = 93.8	Rf59 = 96.5	Rf60 = 93.4
Rf61 = 92.7	Rf62 = 89.1	Rf63 = 92.6	Rf64 = 90.4
Rf65 = 89.1	Rf66 = 87.8	Rf67 = 86.7	Rf68 = 87.8
Rf69 = 89.5	Rf70 = 85.8	Rf71 = 82.1	Rf72 = 93.9
Rf73 = 80.5	Rf74 = 93.0	Rf75 = 84.0	Rf76 = 86.5
Rf77 = 90.2	Rf78 = 84.0	Rf79 = 96.2	Rf80 = 93.4
Rf81 = 88.5	Rf82 = 96.8	Rf83 = 96.8	Rf84 = 94.2
Rf85 = 84.7	Rf86 = 88.2	Rf87 = 90.6	Rf88 = 95.5
Rf89 = 86.8	Rf90 = 96.3	Rf91 = 78.1	Rf92 = 82.2
Rf93 = 88.9	Rf94 = 82.3	Rf95 = 84.8	Rf96 = 91.9
Rf97 = 94.3	Rf98 = 93.5	Rf99 = 91.7	