

## Spectrum Test Report

Sample :  
Specification : EKF5296HL90  
Sample No. : 7  
Manufacturer :

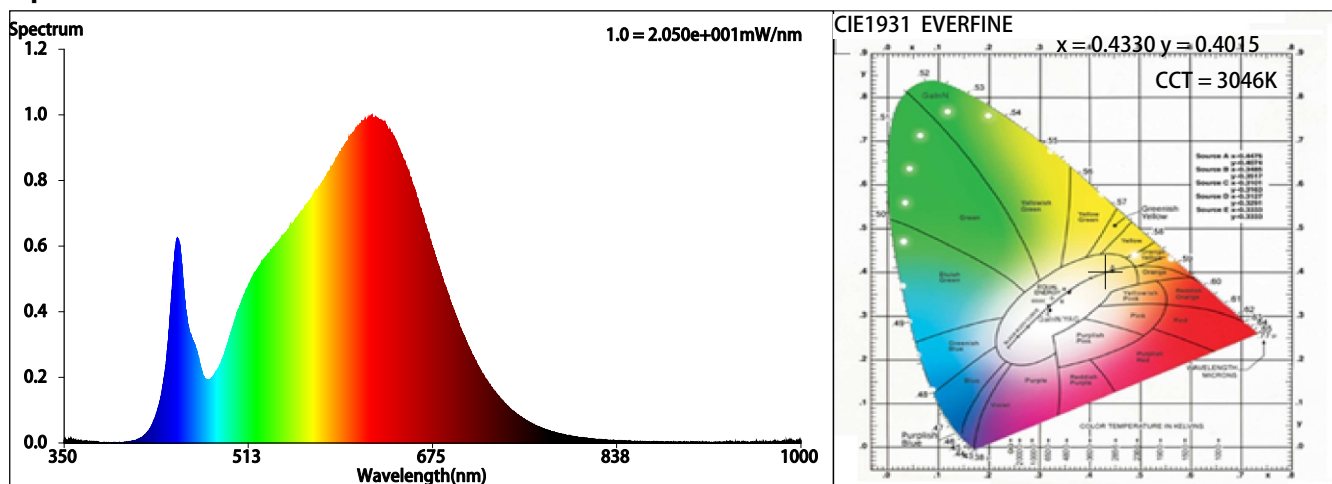
Date : 2022-04-21 20:12:31  
Sam. Status :  
Instrument : HAAS-2000(EVERFINE)  
Test by : QC  
Assessor : damin

### Test Condition

Temperature : 25.3Deg  
WL Range : 350nm-1000nm  
Test Mode : Accuracy Test

RH : 55.0%  
IP : 51934 (79%)  
T : 266 ms  
Sensitivity : High

### Spectrum



### Colorimetric Parameters

Chromaticity Coordinate:  $x = 0.4330$   $y = 0.4015$  /  $u' = 0.2492$   $v' = 0.5198$  ( $duv = -4.86e-04$ )

CCT= 3046K Prcp WL:  $L_d = 582.8\text{nm}$  Purity=50.5%

Peak WL:  $L_p = 622\text{nm}$  FWHM:  $=168.8\text{nm}$  Ratio: R=23.9% G=73.5% B=2.7%

Render Index:  $R_a = 92.1$  TM30:  $R_f = 91$   $R_g = 101$

R1=92 R2=95 R3=96 R4=93 R5=92 R6=93 R7=93

R8=84 R9=62 R10=87 R11=93 R12=78 R13=93 R14=97 R15=89

LEVEL:OUT WHITE:ANSI\_3000K

### Photometric & Radiometric Parameters

Flux = 1041.0 lm Eff. : 93.56 lm/W  $\Phi_e = 3.6583\text{ W}$

### Electrical parameters

V = 24.00 V I = 0.4636 A P = 11.13 W PF = 1.000

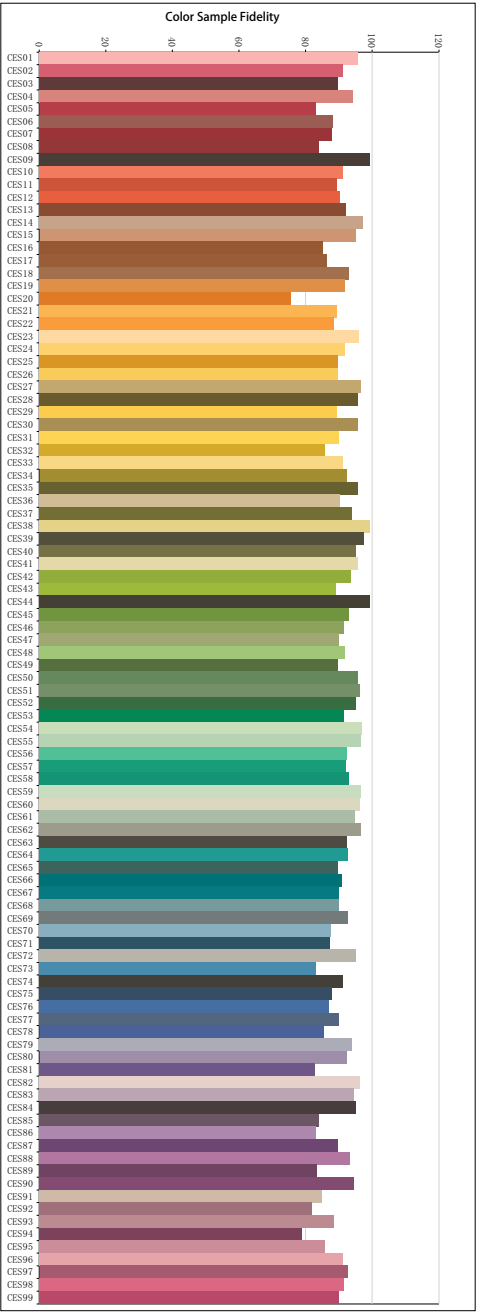
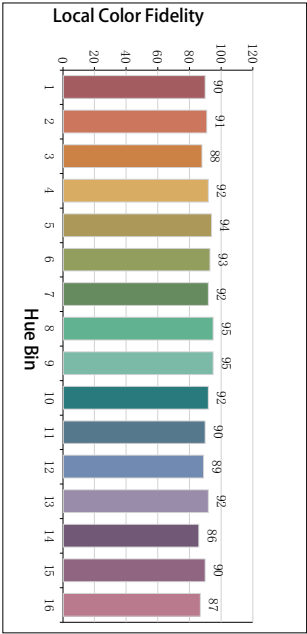
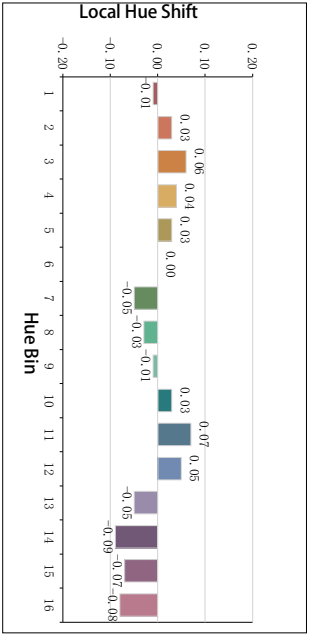
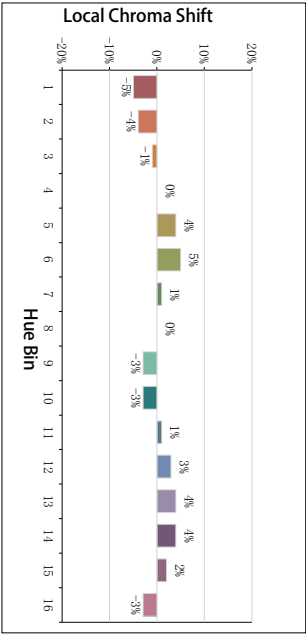
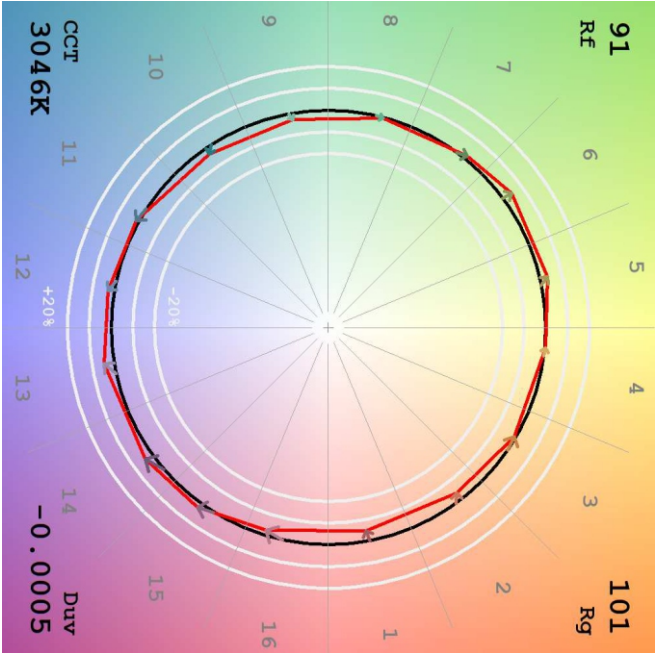
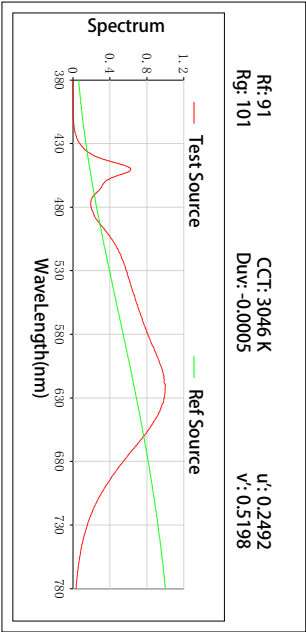
Freq=0.00 Hz

### GBT5702

$R_a = 92$

$G_a = 1.00$

TM30



**All Rf:**

Rf1 = 95.7	Rf2 = 91.3	Rf3 = 89.8	Rf4 = 94.3
Rf5 = 82.9	Rf6 = 88.3	Rf7 = 88.0	Rf8 = 83.9
Rf9 = 99.2	Rf10 = 91.1	Rf11 = 89.3	Rf12 = 90.5
Rf13 = 92.0	Rf14 = 97.3	Rf15 = 94.9	Rf16 = 85.1
Rf17 = 86.4	Rf18 = 93.1	Rf19 = 91.9	Rf20 = 75.5
Rf21 = 89.5	Rf22 = 88.6	Rf23 = 95.9	Rf24 = 91.8
Rf25 = 89.7	Rf26 = 89.7	Rf27 = 96.5	Rf28 = 95.7
Rf29 = 89.3	Rf30 = 95.7	Rf31 = 90.1	Rf32 = 85.7
Rf33 = 91.1	Rf34 = 92.2	Rf35 = 95.8	Rf36 = 90.4
Rf37 = 93.8	Rf38 = 99.3	Rf39 = 97.6	Rf40 = 95.2
Rf41 = 95.8	Rf42 = 93.6	Rf43 = 89.1	Rf44 = 99.3
Rf45 = 93.2	Rf46 = 91.5	Rf47 = 90.1	Rf48 = 91.9
Rf49 = 89.8	Rf50 = 95.8	Rf51 = 96.3	Rf52 = 95.1
Rf53 = 91.6	Rf54 = 97.0	Rf55 = 96.5	Rf56 = 92.4
Rf57 = 92.2	Rf58 = 93.0	Rf59 = 96.5	Rf60 = 96.4
Rf61 = 94.8	Rf62 = 96.6	Rf63 = 92.2	Rf64 = 92.7
Rf65 = 89.7	Rf66 = 90.9	Rf67 = 90.0	Rf68 = 90.1
Rf69 = 92.7	Rf70 = 87.6	Rf71 = 87.3	Rf72 = 95.2
Rf73 = 83.0	Rf74 = 91.2	Rf75 = 87.9	Rf76 = 87.0
Rf77 = 90.1	Rf78 = 85.4	Rf79 = 93.8	Rf80 = 92.3
Rf81 = 82.8	Rf82 = 96.3	Rf83 = 94.5	Rf84 = 95.2
Rf85 = 84.1	Rf86 = 83.2	Rf87 = 89.6	Rf88 = 93.4
Rf89 = 83.3	Rf90 = 94.5	Rf91 = 84.9	Rf92 = 81.9
Rf93 = 88.6	Rf94 = 78.8	Rf95 = 86.0	Rf96 = 91.2
Rf97 = 92.6	Rf98 = 91.6	Rf99 = 89.9	