

## Spectrum Test Report

Sample :  
Specification : EKF5196HL90  
Sample No. : 5  
Manufacturer :

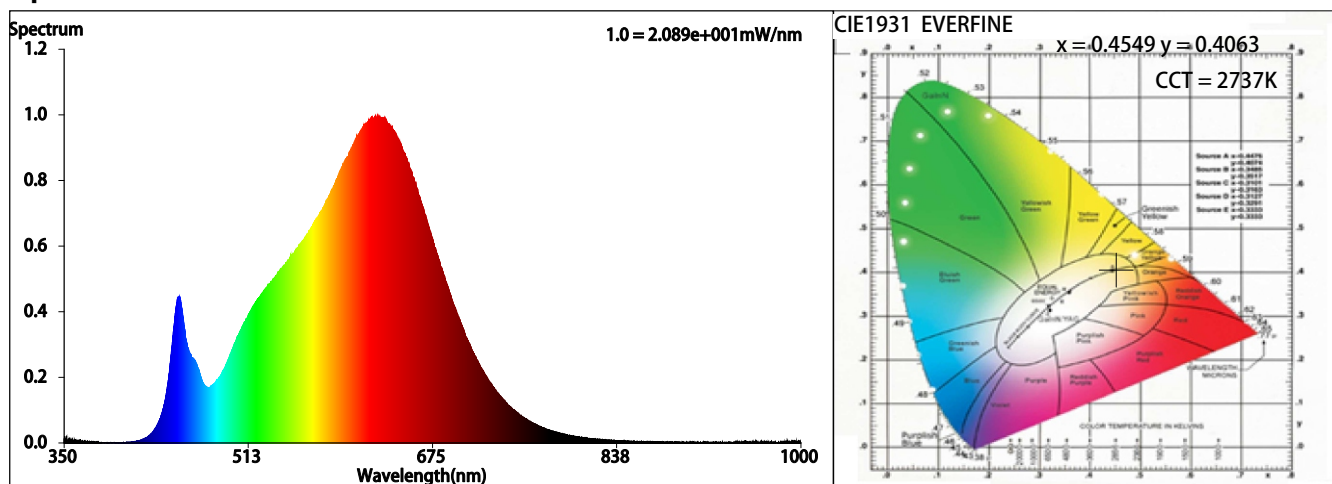
Date : 2022-04-20 16:40:00  
Sam. Status :  
Instrument : HAAS-2000(EVERFINE)  
Test by : QC  
Assessor : damin

### Test Condition

Temperature : 25.3Deg  
WL Range : 350nm-1000nm  
Test Mode : Accuracy Test

RH : 55.0%  
IP : 50776 (77%)  
T : 260 ms  
Sensitivity : High

### Spectrum



### Colorimetric Parameters

Chromaticity Coordinate:  $x = 0.4549$   $y = 0.4063$  /  $u' = 0.2612$   $v' = 0.5250$  ( $duv = -1.16e-03$ )

CCT= 2737K Prcp WL:  $L_d=584.4nm$  Purity=58.5%

Peak WL:  $L_p=627nm$  FWHM:  $=152.4nm$  Ratio:R=26.3% G=71.3% B=2.4%

Render Index:  $R_a = 93.7$  TM30:  $R_f=92$   $R_g=101$

$R_1=94$   $R_2=97$   $R_3=98$   $R_4=94$   $R_5=94$   $R_6=96$   $R_7=93$

$R_8=84$   $R_9=65$   $R_{10}=92$   $R_{11}=95$   $R_{12}=84$   $R_{13}=95$   $R_{14}=98$   $R_{15}=91$

LEVEL:OUT WHITE:ANSI\_2700K

### Photometric & Radiometric Parameters

Flux = 953.58 lm Eff. : 87.56 lm/W  $F_e = 3.4764 W$

### Electrical parameters

$V = 24.00 V$   $I = 0.4538 A$   $P = 10.89 W$  PF = 1.000

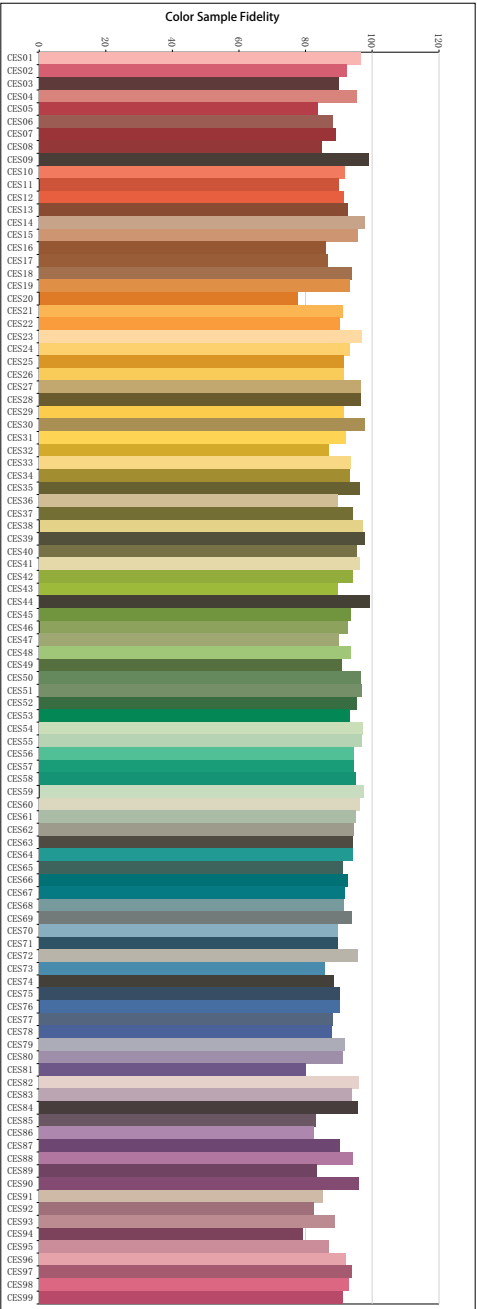
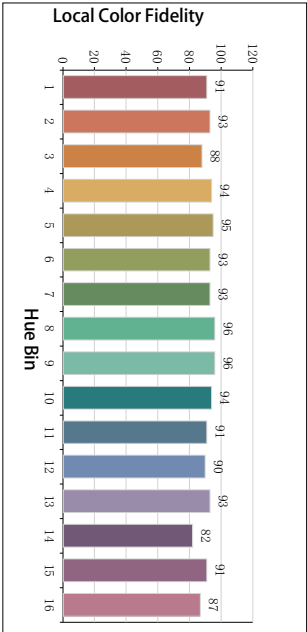
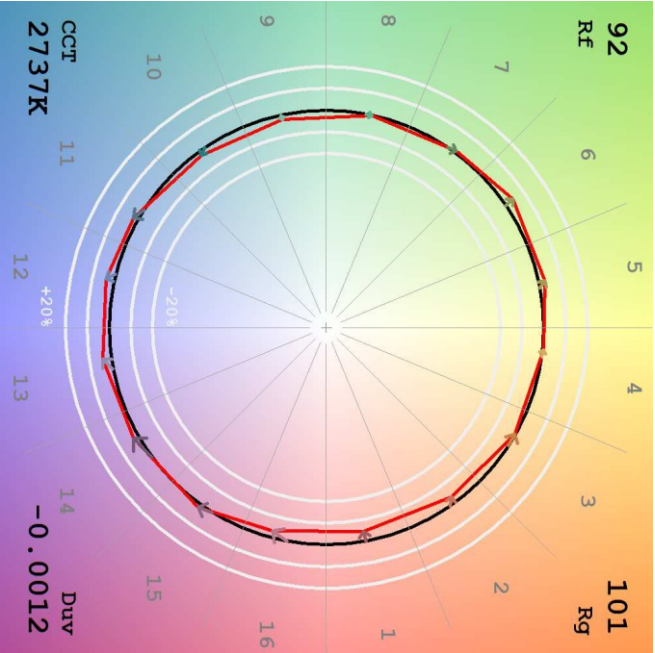
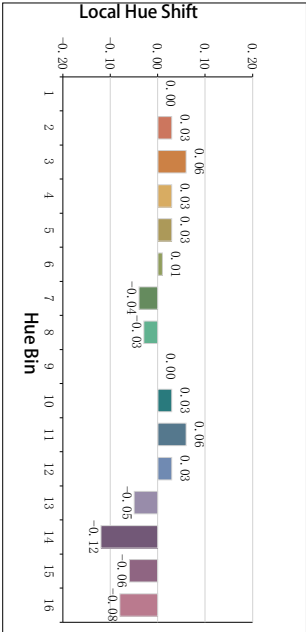
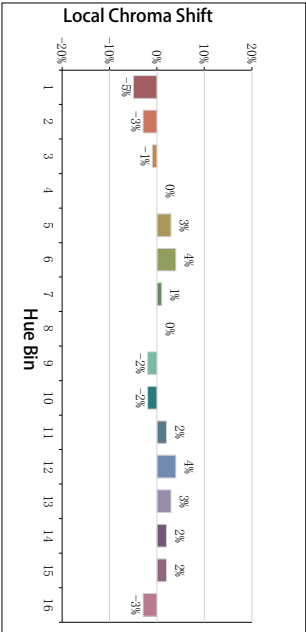
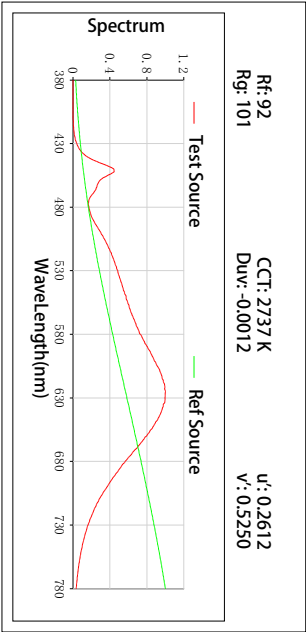
Freq=0.00 Hz

### GBT5702

$R_a = 92$

$G_a = 1.00$

TM30



**All Rf:**

Rf1 = 96.5	Rf2 = 92.4	Rf3 = 90.1	Rf4 = 95.5
Rf5 = 83.6	Rf6 = 88.2	Rf7 = 89.3	Rf8 = 84.9
Rf9 = 99.1	Rf10 = 91.8	Rf11 = 89.9	Rf12 = 91.5
Rf13 = 92.7	Rf14 = 97.7	Rf15 = 95.7	Rf16 = 86.0
Rf17 = 86.8	Rf18 = 94.0	Rf19 = 93.4	Rf20 = 77.5
Rf21 = 91.2	Rf22 = 90.3	Rf23 = 96.8	Rf24 = 93.3
Rf25 = 91.5	Rf26 = 91.5	Rf27 = 96.6	Rf28 = 96.5
Rf29 = 91.6	Rf30 = 98.0	Rf31 = 91.9	Rf32 = 87.0
Rf33 = 93.5	Rf34 = 93.4	Rf35 = 96.4	Rf36 = 89.8
Rf37 = 94.3	Rf38 = 97.1	Rf39 = 97.8	Rf40 = 95.4
Rf41 = 96.2	Rf42 = 94.1	Rf43 = 89.7	Rf44 = 99.2
Rf45 = 93.7	Rf46 = 92.5	Rf47 = 89.9	Rf48 = 93.5
Rf49 = 91.0	Rf50 = 96.6	Rf51 = 97.0	Rf52 = 95.4
Rf53 = 93.2	Rf54 = 97.2	Rf55 = 96.8	Rf56 = 94.6
Rf57 = 94.5	Rf58 = 95.3	Rf59 = 97.3	Rf60 = 96.3
Rf61 = 95.3	Rf62 = 94.6	Rf63 = 94.3	Rf64 = 94.2
Rf65 = 91.3	Rf66 = 92.7	Rf67 = 91.9	Rf68 = 91.6
Rf69 = 93.8	Rf70 = 89.6	Rf71 = 89.8	Rf72 = 95.9
Rf73 = 85.9	Rf74 = 88.6	Rf75 = 90.4	Rf76 = 90.1
Rf77 = 88.3	Rf78 = 88.0	Rf79 = 91.7	Rf80 = 91.2
Rf81 = 80.2	Rf82 = 95.9	Rf83 = 93.9	Rf84 = 95.9
Rf85 = 83.0	Rf86 = 82.6	Rf87 = 90.4	Rf88 = 94.2
Rf89 = 83.5	Rf90 = 95.9	Rf91 = 85.3	Rf92 = 82.5
Rf93 = 88.7	Rf94 = 79.3	Rf95 = 87.1	Rf96 = 92.2
Rf97 = 93.8	Rf98 = 93.1	Rf99 = 91.2	