

## Spectrum Test Report

Sample :  
Specification : EKF4196HL90  
Sample No. : 5  
Manufacturer :

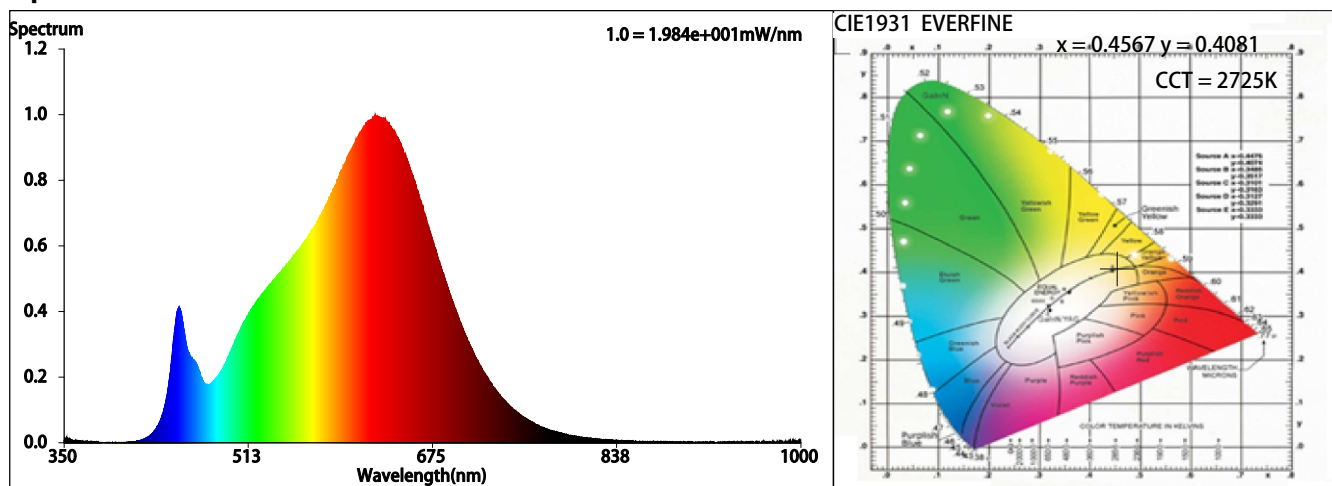
Date : 2021-12-09 15:13:47  
Sam. Status :  
Instrument : HAAS-2000(EVERFINE)  
Test by : QC  
Assessor : damin

### Test Condition

Temperature : 25.3Deg  
WL Range : 350nm-1000nm  
Test Mode : Accuracy Test

RH : 55.0%  
IP : 51742 (79%)  
T : 231 ms  
Sensitivity : High

### Spectrum



### Colorimetric Parameters

Chromaticity Coordinate:  $x = 0.4567$   $y = 0.4081$  /  $u' = 0.2616$   $v' = 0.5259$  ( $duv = -6.59e-04$ )

CCT= 2725K Prcp WL:  $L_d = 584.3\text{nm}$  Purity=59.6%

Peak WL:  $L_p = 624\text{nm}$  FWHM:  $= 150.3\text{nm}$  Ratio: R=26.4% G=71.1% B=2.5%

Render Index:  $R_a = 94.3$  TM30:  $R_f = 93$   $R_g = 101$

R1 =95 R2 =97 R3 =98 R4 =95 R5 =95 R6 =97 R7 =93

R8 =85 R9 =66 R10=93 R11=96 R12=85 R13=96 R14=98 R15=91

LEVEL:OUT WHITE:ANSI\_2700K

### Photometric & Radiometric Parameters

Flux = 960.36 lm Eff. : 91.03 lm/W  $F_e = 3.2789\text{ W}$

### Electrical parameters

V = 12.00 V I = 0.8796 A P = 10.55 W PF = 1.000

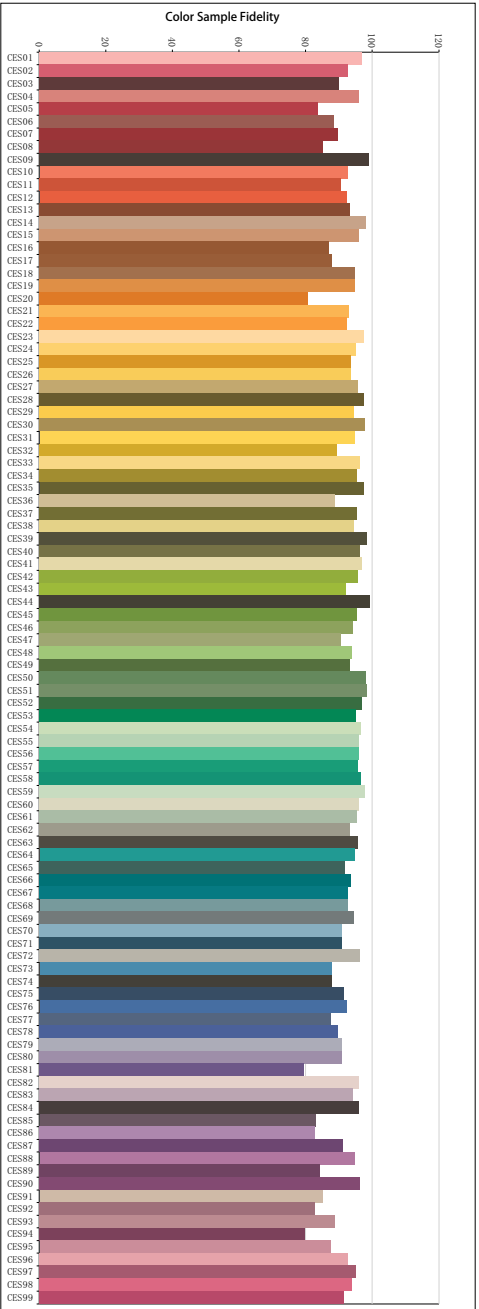
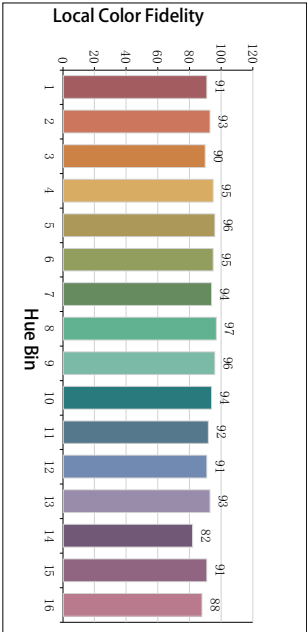
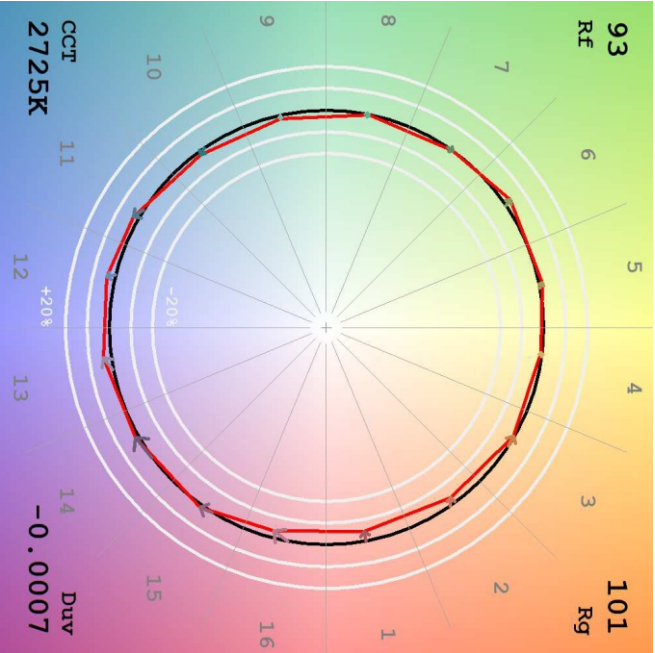
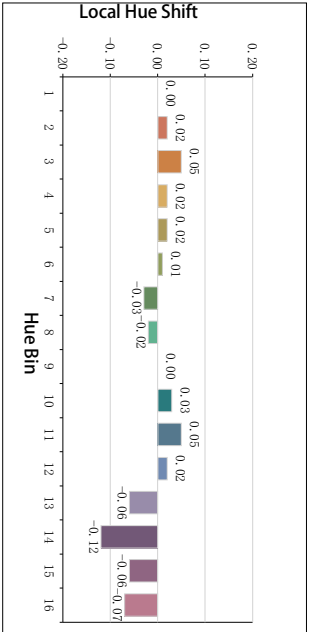
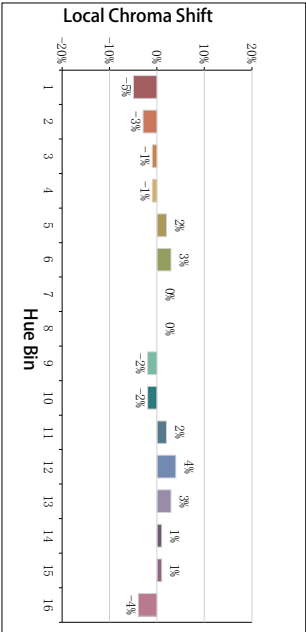
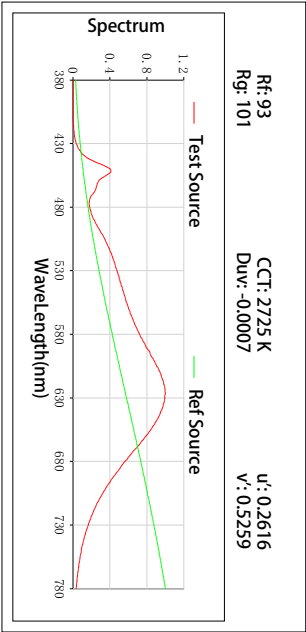
Freq=0.00 Hz

GBT5702

$R_a = 94$

$G_a = 0.99$

TM30



**All Rf:**

Rf1 = 96.8	Rf2 = 92.7	Rf3 = 90.1	Rf4 = 96.0
Rf5 = 83.8	Rf6 = 88.5	Rf7 = 89.6	Rf8 = 85.2
Rf9 = 99.0	Rf10 = 92.5	Rf11 = 90.6	Rf12 = 92.3
Rf13 = 93.3	Rf14 = 98.1	Rf15 = 96.1	Rf16 = 87.0
Rf17 = 87.8	Rf18 = 94.8	Rf19 = 94.8	Rf20 = 80.8
Rf21 = 93.1	Rf22 = 92.4	Rf23 = 97.7	Rf24 = 95.0
Rf25 = 93.5	Rf26 = 93.8	Rf27 = 95.8	Rf28 = 97.4
Rf29 = 94.5	Rf30 = 97.8	Rf31 = 94.7	Rf32 = 89.5
Rf33 = 96.2	Rf34 = 95.4	Rf35 = 97.4	Rf36 = 88.8
Rf37 = 95.4	Rf38 = 94.6	Rf39 = 98.3	Rf40 = 96.3
Rf41 = 96.8	Rf42 = 95.8	Rf43 = 92.2	Rf44 = 99.3
Rf45 = 95.5	Rf46 = 94.3	Rf47 = 90.8	Rf48 = 93.9
Rf49 = 93.2	Rf50 = 98.2	Rf51 = 98.5	Rf52 = 96.9
Rf53 = 95.3	Rf54 = 96.6	Rf55 = 96.1	Rf56 = 96.0
Rf57 = 95.7	Rf58 = 96.5	Rf59 = 97.7	Rf60 = 96.0
Rf61 = 95.4	Rf62 = 93.4	Rf63 = 95.7	Rf64 = 94.7
Rf65 = 91.9	Rf66 = 93.5	Rf67 = 92.8	Rf68 = 92.6
Rf69 = 94.4	Rf70 = 91.0	Rf71 = 90.9	Rf72 = 96.3
Rf73 = 87.8	Rf74 = 88.1	Rf75 = 91.6	Rf76 = 92.3
Rf77 = 87.7	Rf78 = 89.7	Rf79 = 90.9	Rf80 = 91.1
Rf81 = 79.5	Rf82 = 96.0	Rf83 = 94.1	Rf84 = 96.1
Rf85 = 83.0	Rf86 = 82.7	Rf87 = 91.3	Rf88 = 94.7
Rf89 = 84.3	Rf90 = 96.4	Rf91 = 85.1	Rf92 = 82.7
Rf93 = 88.9	Rf94 = 79.8	Rf95 = 87.5	Rf96 = 92.7
Rf97 = 95.0	Rf98 = 93.8	Rf99 = 91.4	