

## Spectrum Test Report

Sample :  
Specification : EKF4248HL90  
Sample No. : 9  
Manufacturer :

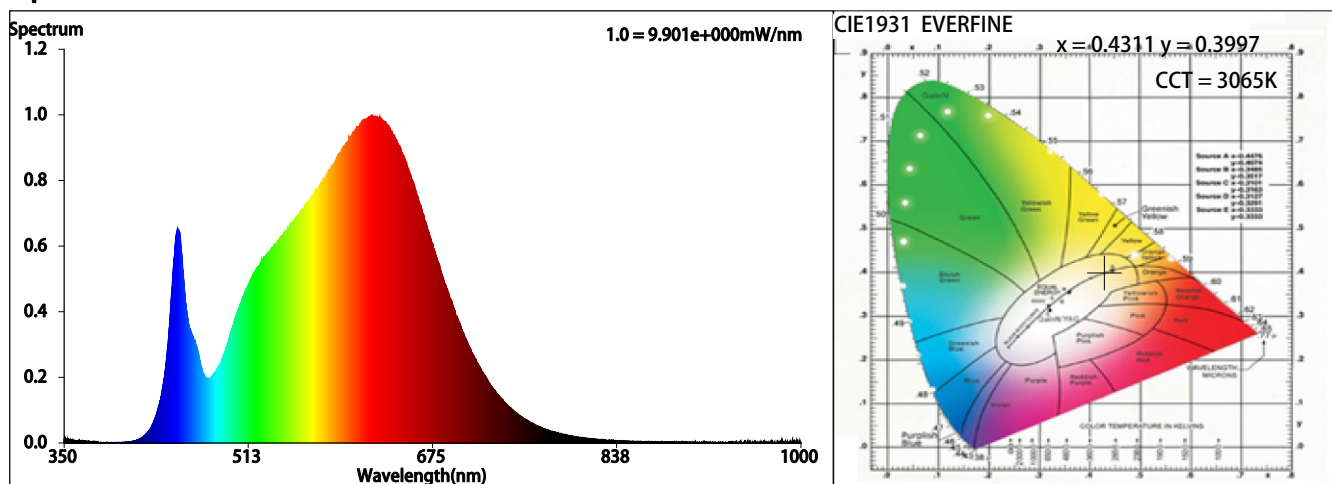
Date : 2022-04-23 16:42:01  
Sam. Status :  
Instrument : HAAS-2000(EVERFINE)  
Test by : QC  
Assessor : damin

### Test Condition

Temperature : 25.3Deg  
WL Range : 350nm-1000nm  
Test Mode : Accuracy Test

RH : 55.0%  
IP : 51600 (79%)  
T : 548 ms  
Sensitivity : High

### Spectrum



### Colorimetric Parameters

Chromaticity Coordinate:  $x = 0.4311$   $y = 0.3997$  /  $u' = 0.2487$   $v' = 0.5188$  ( $duv = -9.20e-04$ )

CCT= 3065K Prcp WL:  $L_d = 582.9nm$  Purity=49.4%

Peak WL:  $L_p = 622nm$  FWHM:  $= 170.0nm$  Ratio: R=23.8% G=73.5% B=2.7%

Render Index:  $R_a = 92.4$  TM30:  $R_f = 91$   $R_g = 101$

R1 =93 R2 =95 R3 =96 R4 =93 R5 =92 R6 =93 R7 =93  
R8 =84 R9 =63 R10=87 R11=93 R12=78 R13=93 R14=97 R15=90

### Photometric & Radiometric Parameters

Flux = 505.24 lm Eff. : 91.72 lm/W  $F_e = 1.7840 W$   
(EQE):186.13%

### Electrical parameters

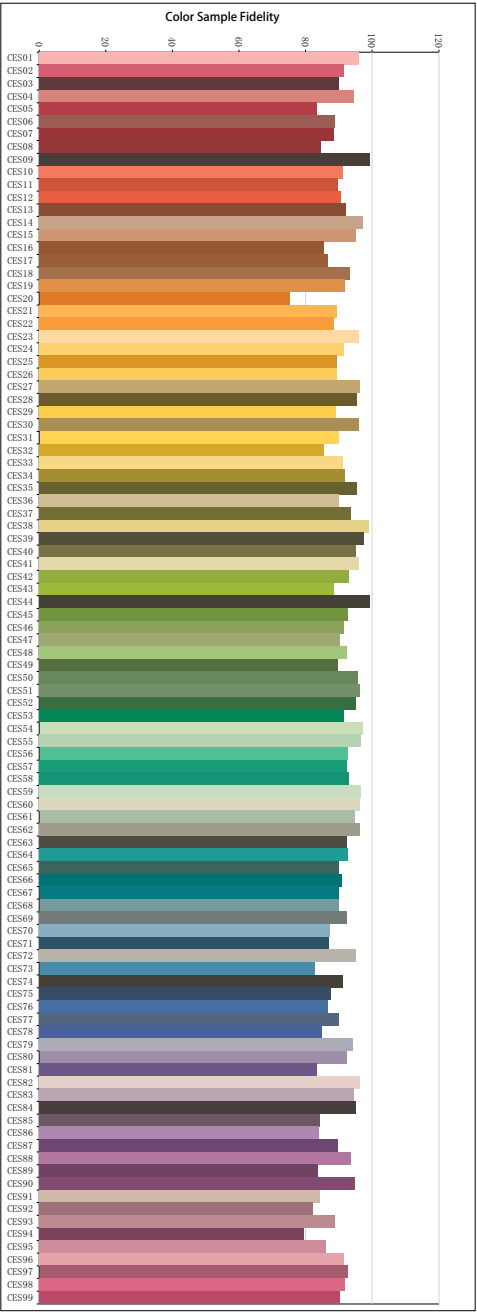
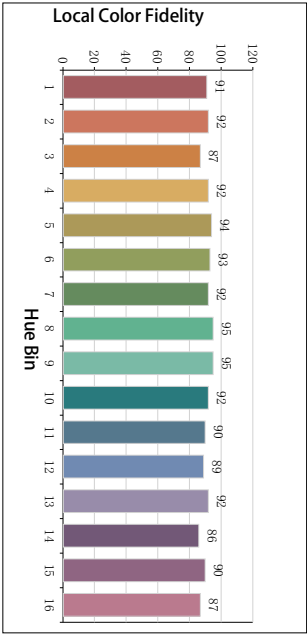
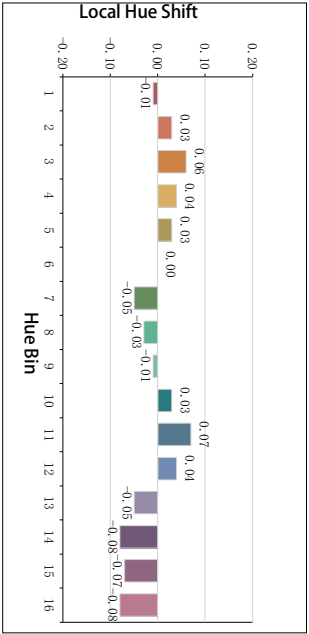
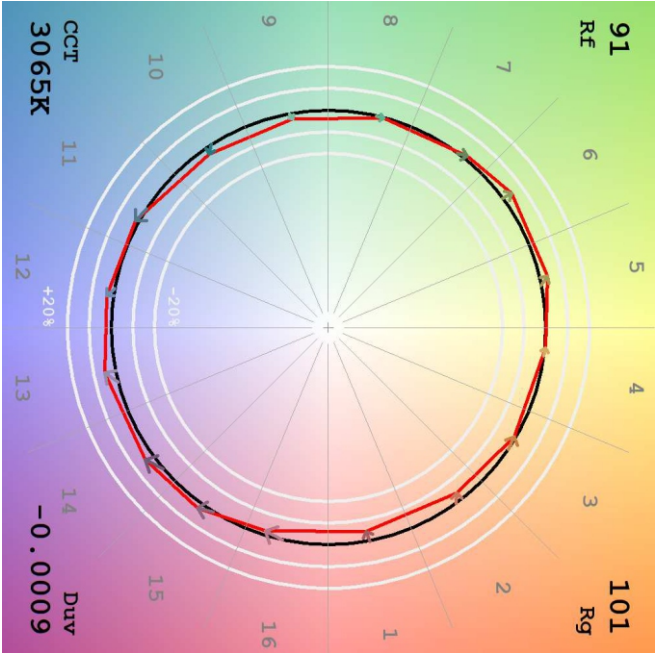
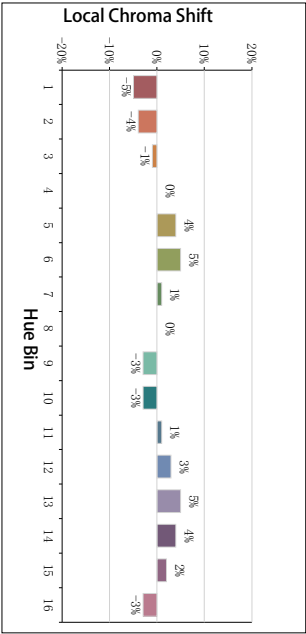
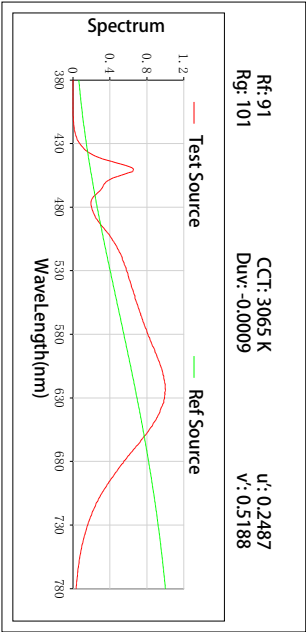
V = 12.00 V I = 0.4591 A P = 5.508 W PF = 1.000  
Freq=0.00 Hz

### GBT5702

$R_a = 92$

$G_a = 1.00$

TM30



**All Rf:**

Rf1 = 95.9	Rf2 = 91.7	Rf3 = 90.1	Rf4 = 94.5
Rf5 = 83.6	Rf6 = 88.7	Rf7 = 88.6	Rf8 = 84.7
Rf9 = 99.3	Rf10 = 91.3	Rf11 = 89.6	Rf12 = 90.7
Rf13 = 92.2	Rf14 = 97.3	Rf15 = 95.2	Rf16 = 85.6
Rf17 = 86.7	Rf18 = 93.3	Rf19 = 91.8	Rf20 = 75.2
Rf21 = 89.3	Rf22 = 88.6	Rf23 = 95.9	Rf24 = 91.6
Rf25 = 89.5	Rf26 = 89.5	Rf27 = 96.4	Rf28 = 95.5
Rf29 = 89.2	Rf30 = 96.0	Rf31 = 89.9	Rf32 = 85.5
Rf33 = 91.2	Rf34 = 91.8	Rf35 = 95.5	Rf36 = 90.0
Rf37 = 93.6	Rf38 = 98.9	Rf39 = 97.6	Rf40 = 95.1
Rf41 = 95.9	Rf42 = 93.2	Rf43 = 88.6	Rf44 = 99.3
Rf45 = 92.9	Rf46 = 91.4	Rf47 = 90.2	Rf48 = 92.4
Rf49 = 89.6	Rf50 = 95.7	Rf51 = 96.3	Rf52 = 94.9
Rf53 = 91.5	Rf54 = 97.1	Rf55 = 96.6	Rf56 = 92.5
Rf57 = 92.5	Rf58 = 93.2	Rf59 = 96.7	Rf60 = 96.2
Rf61 = 94.7	Rf62 = 96.3	Rf63 = 92.4	Rf64 = 92.7
Rf65 = 90.0	Rf66 = 90.8	Rf67 = 89.9	Rf68 = 89.9
Rf69 = 92.3	Rf70 = 87.3	Rf71 = 86.9	Rf72 = 95.1
Rf73 = 82.6	Rf74 = 91.3	Rf75 = 87.5	Rf76 = 86.7
Rf77 = 90.1	Rf78 = 84.9	Rf79 = 94.1	Rf80 = 92.3
Rf81 = 83.5	Rf82 = 96.2	Rf83 = 94.6	Rf84 = 95.1
Rf85 = 84.2	Rf86 = 83.9	Rf87 = 89.6	Rf88 = 93.7
Rf89 = 83.6	Rf90 = 94.8	Rf91 = 84.4	Rf92 = 82.2
Rf93 = 88.8	Rf94 = 79.4	Rf95 = 86.1	Rf96 = 91.4
Rf97 = 92.5	Rf98 = 91.9	Rf99 = 90.5	