

DATASHEET

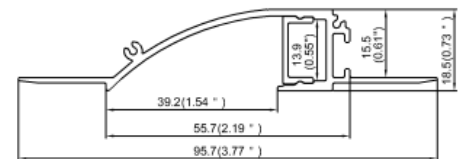
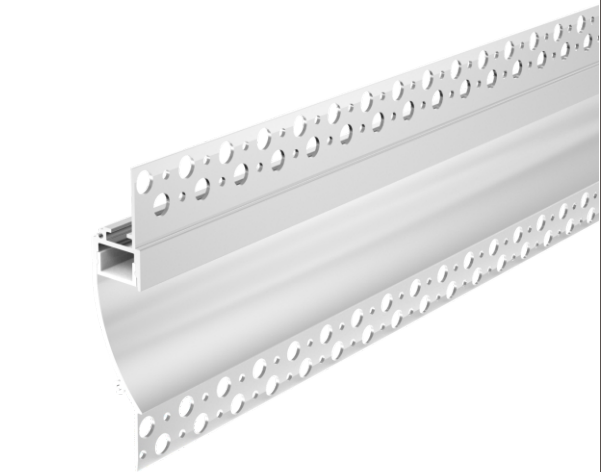
EKPF96 - Perfil Para Fita LED com Difusor Leitoso / Embutir

Descrição:

É o detalhe que faz toda diferença no ambiente. Oferecemos perfis com 2 metros para total liberdade nos seus projetos.

Indicação:

Recessed




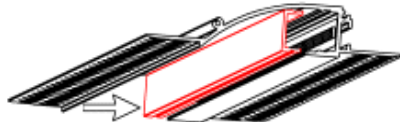
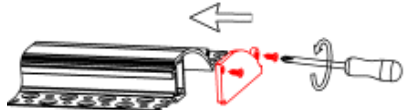
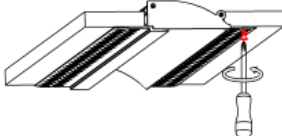
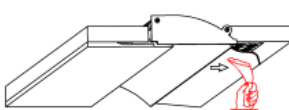
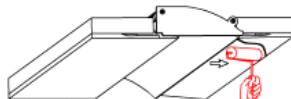
Perfil de alumínio com acrílico PMMA para embutir

DATASHEET

Especificação

Aluminum profile	EKPF96
Diffuser	PC diffused cover
Length	2000mm / 3000mm
Weight	0.618kg/m
Max LED Strip Width	12mm
Max Power	18W/m
Beam angle	100°
Finish	Silver / Black anodized, Powder coated white / black or other colors
Installation	Recessed

Método de instalação

<p>1. Stick the LED strip.</p> 	<p>2. Press the diffused cover .</p> 	<p>3. Fix the end caps.</p> 	
<p>4. Mounting the fixture .</p> 	<p>5. Plaster on the fixture & drywall.</p> 	<p>6. Painting on the fixture & drywall.</p> 	<p>6. Installation completed.</p> 