

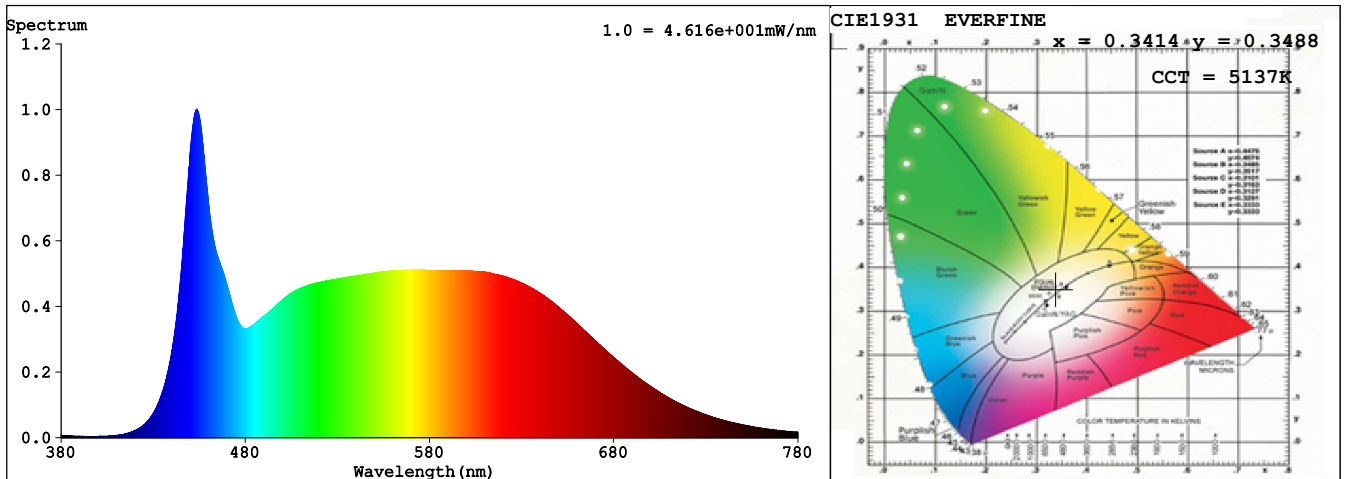
## Report Title

Sample	: LED Soft light bar	Date	: 2020-10-27 15:11:01
Specification	: EKF4515HLC90	Standard	: IES LM-79-08
Sample No.	: WY-GX-2020102608	Instrument	: HaasSuite(EVERFINE)
Manufacturer	: LEDIA	Test by	: Hu Cong
Assessor	: Chunbo Zhou		
Remark	: /		

### Test Condition

Temperature	: 25.6Deg	RH	: 41.9%
WL Range	: 380nm-780nm	IP	: 52150 (80%)
Test Mode	: Fast Test	T	: 52 ms
Sensitivity	: High		

### Spectrum



Spectral Distribution

CIE1931 Chromaticity Diagram

### Colorimetric Parameters

Chromaticity Coordinate:  $x = 0.3414$   $y = 0.3488$  /  $u' = 0.2100$   $v' = 0.4827$  ( $duv=9.68e-05$ )

CCT= 5137K Prcp WL:  $L_d=570.4nm$  Purity=7.1%

Peak WL:  $L_p=454nm$  FWHM:  $=23.2nm$  Ratio:R=17.2% G=77.0% B=5.8%

Render Index:  $R_a = 94.3$  TM30:  $R_f=90$   $R_g=99$

R1 =95 R2 =98 R3 =98 R4 =93 R5 =94 R6 =94 R7 =93

R8 =88 R9 =73 R10=95 R11=95 R12=73 R13=97 R14=99 R15=94

WHITE:ANSI\_5000K

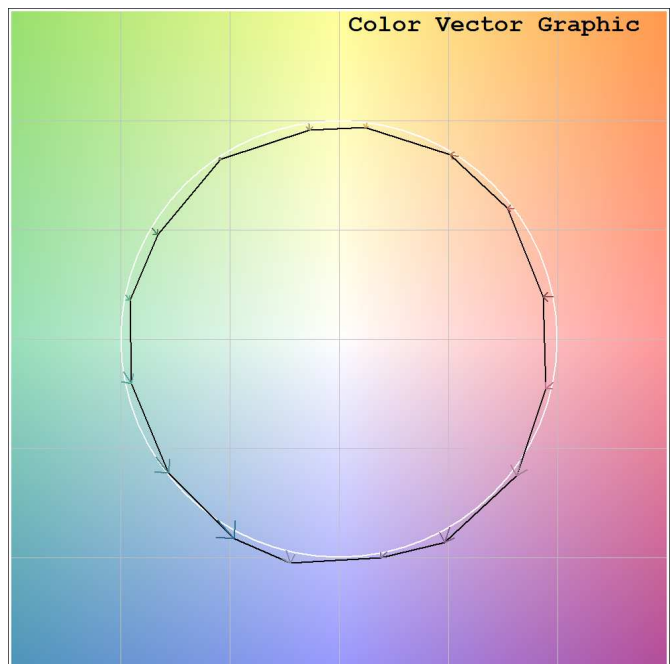
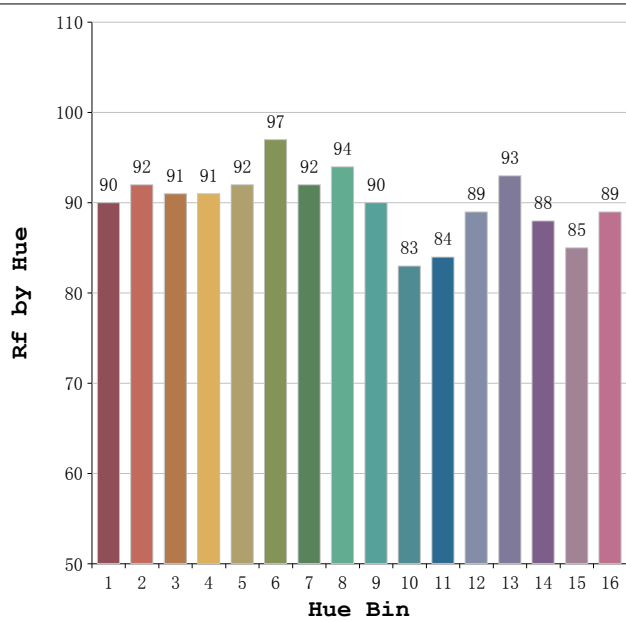
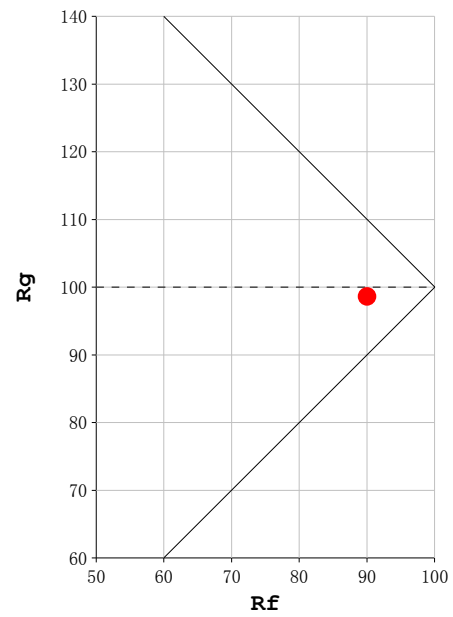
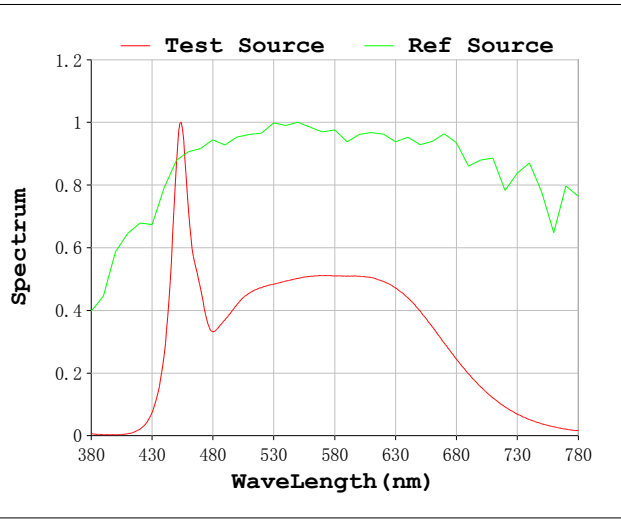
### Photometric & Radiometric Parameters

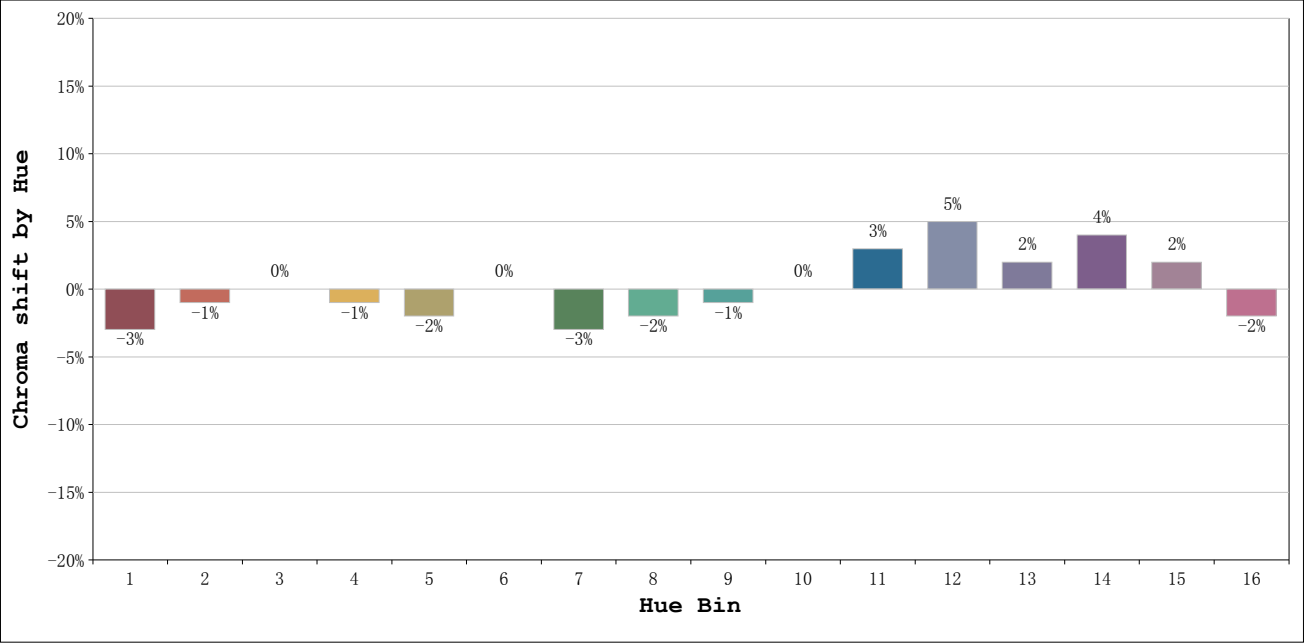
Flux = 1638.1 lm Eff. : 101.14 lm/W Fe = 5.7545 W

### Electrical parameters

V = 12.00 V I = 1.349 A P = 16.20 W PF = 1.0000 F=0.00 Hz

**Rf: 90**      **CCT: 5137 K**      **u': 0.2100**  
**Rg: 99**      **Duv: 0.0001**      **v': 0.4827**





			Graphic shift(%)	
Hue Bin	Hue Angle	Rf	Chroma	Hue
1	0. 0° - 22. 5°	90	-3	1
2	22. 5° - 45. 0°	92	-1	2
3	45. 0° - 67. 5°	91	0	4
4	67. 5° - 90. 0°	91	-1	1
5	90. 0° - 112. 5°	92	-2	0
6	112. 5° - 135. 0°	97	0	0
7	135. 0° - 157. 5°	92	-3	1
8	157. 5° - 180. 0°	94	-2	2
9	180. 0° - 202. 5°	90	-1	6
10	202. 5° - 225. 0°	83	0	9
11	225. 0° - 247. 5°	84	3	11
12	247. 5° - 270. 0°	89	5	3
13	270. 0° - 292. 5°	93	2	-2
14	292. 5° - 315. 0°	88	4	-5
15	315. 0° - 337. 5°	85	2	-7
16	337. 5° - 360. 0°	89	-2	-3