

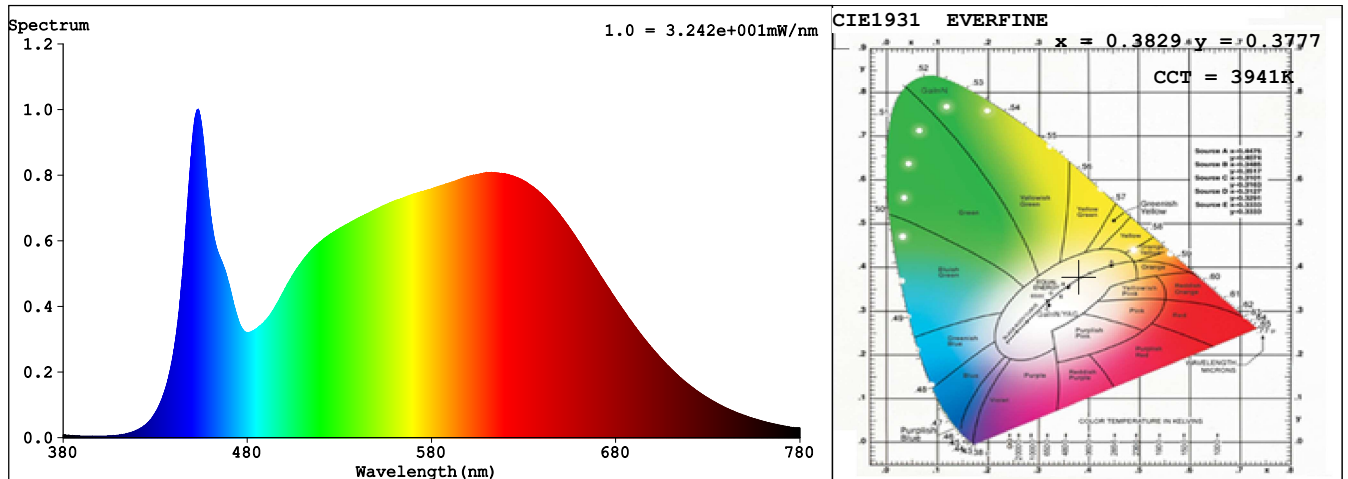
Report Title

Sample	: LED Soft light bar	Date	: 2020-10-27 15:06:41
Specification	: EKF4415HLC90	Standard	: IES LM-79-08
Sample No.	: WY-GX-2020102606	Instrument	: HaasSuite(EVERFINE)
Manufacturer	: LEDIA	Test by	: Hu Cong
Assessor	: Chunbo Zhou		
Remark	: /		

Test Condition

Temperature	: 25.7Deg	RH	: 41.9%
WL Range	: 380nm-780nm	IP	: 46765 (71%)
Test Mode	: Fast Test	T	: 52 ms
Sensitivity	: High		

Spectrum



Spectral Distribution

CIE1931 Chromaticity Diagram

Colorimetric Parameters

Chromaticity Coordinate: $x = 0.3829$ $y = 0.3777$ / $u' = 0.2263$ $v' = 0.5024$ ($duv = -2.62e-04$)

CCT= 3941K Prpc WL: $L_d = 579.4\text{nm}$ Purity=28.3%

Peak WL: $L_p = 453\text{nm}$ FWHM: $= 23.6\text{nm}$ Ratio: R=19.9% G=76.0% B=4.1%

Render Index: $R_a = 92.7$ TM30: $R_f = 90$ $R_g = 99$

R1 =93 R2 =96 R3 =96 R4 =92 R5 =92 R6 =92 R7 =94

R8 =86 R9 =67 R10=89 R11=92 R12=69 R13=94 R14=98 R15=91

WHITE:ANSI_4000K

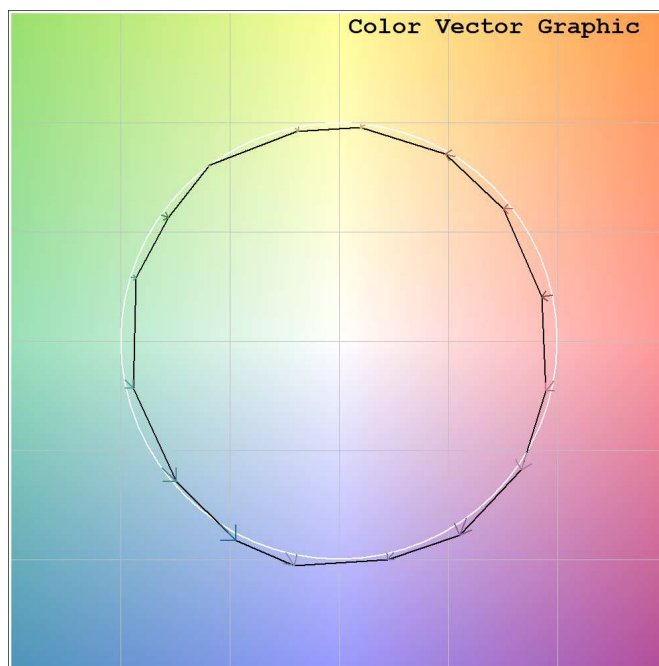
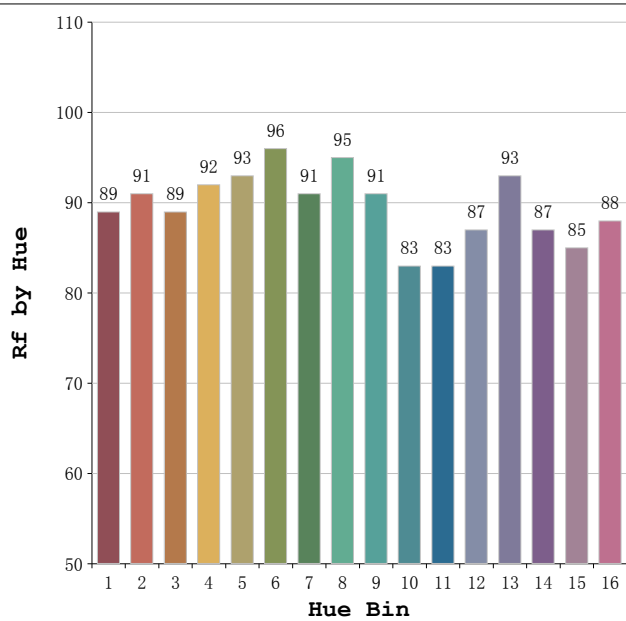
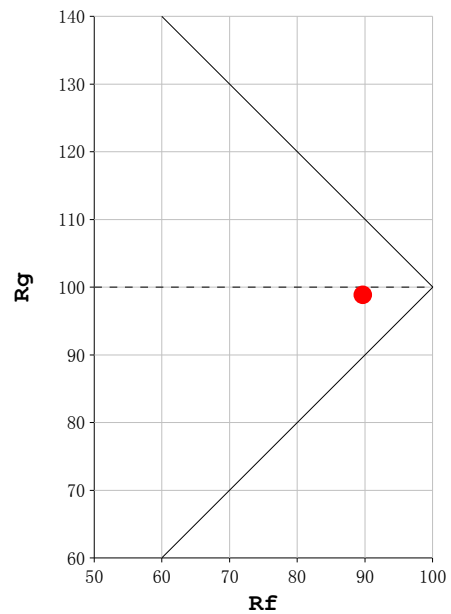
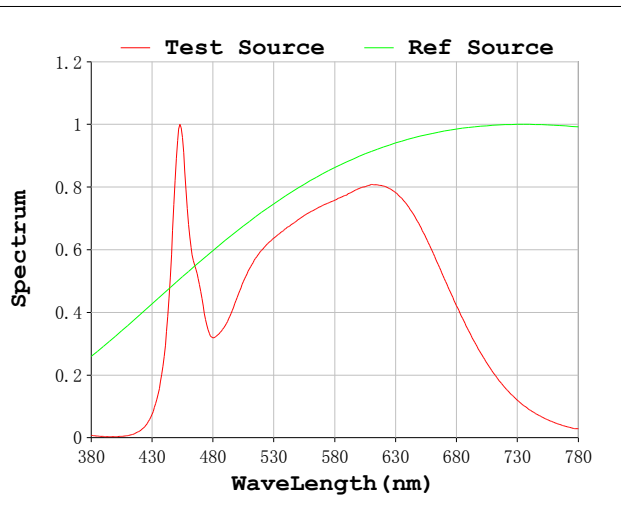
Photometric & Radiometric Parameters

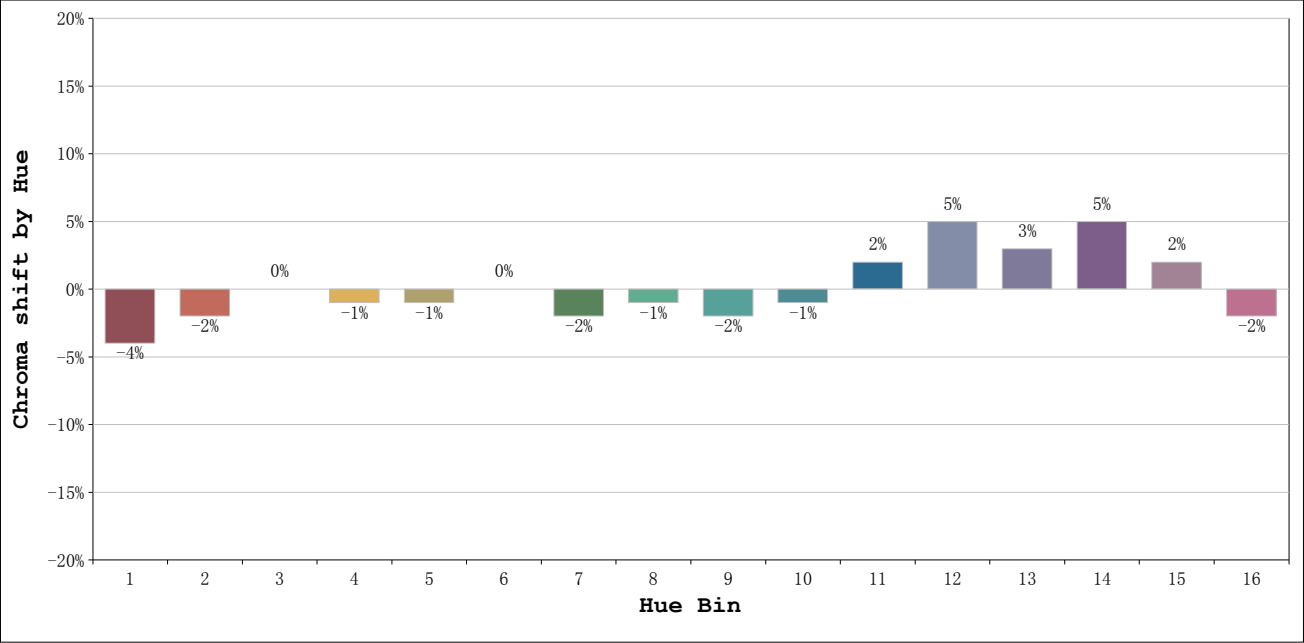
Flux = 1620.3 lm Eff. : 101.50 lm/W Fe = 5.5648 W

Electrical parameters

V = 12.01 V I = 1.330 A P = 15.96 W PF = 1.0000 F=0.00 Hz

Rf: 90 CCT: 3941 K u' : 0.2263
Rg: 99 Duv: -0.0003 v' : 0.5024





			Graphic shift(%)	
Hue Bin	Hue Angle	Rf	Chroma	Hue
1	0. 0° - 22. 5°	89	-4	0
2	22. 5° - 45. 0°	91	-2	2
3	45. 0° - 67. 5°	89	0	5
4	67. 5° - 90. 0°	92	-1	2
5	90. 0° - 112. 5°	93	-1	1
6	112. 5° - 135. 0°	96	0	0
7	135. 0° - 157. 5°	91	-2	0
8	157. 5° - 180. 0°	95	-1	0
9	180. 0° - 202. 5°	91	-2	5
10	202. 5° - 225. 0°	83	-1	9
11	225. 0° - 247. 5°	83	2	10
12	247. 5° - 270. 0°	87	5	5
13	270. 0° - 292. 5°	93	3	-2
14	292. 5° - 315. 0°	87	5	-6
15	315. 0° - 337. 5°	85	2	-7
16	337. 5° - 360. 0°	88	-2	-4