

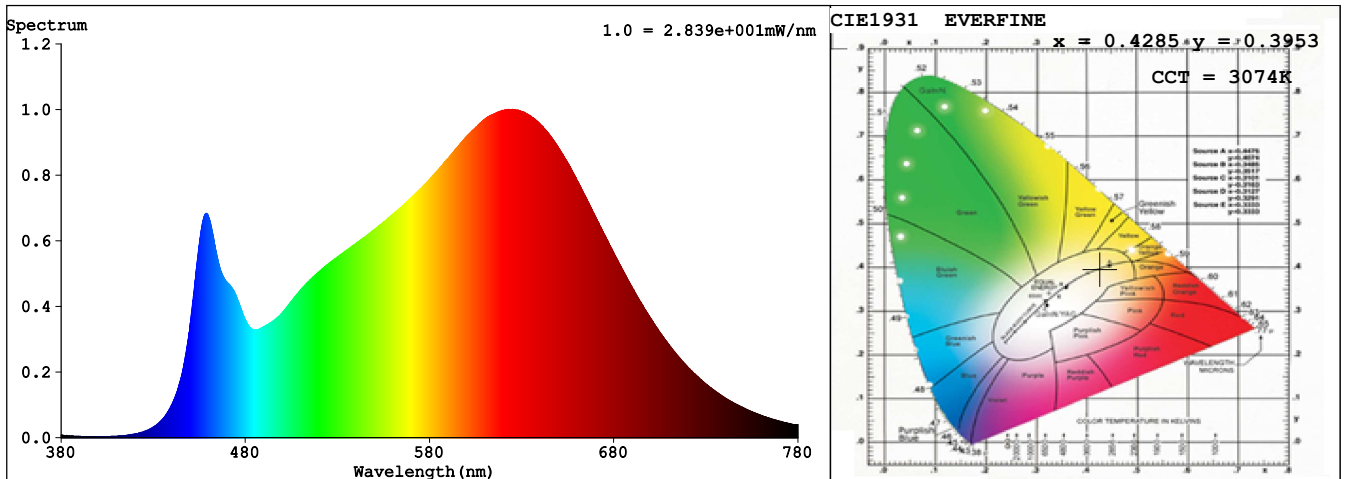
Report Title

Sample	: LED Soft light bar	Date	: 2020-10-27 15:08:58
Specification	: EKF4215HLC90	Standard	: IES LM-79-08
Sample No.	: WY-GX-2020102607	Instrument	: HaasSuite(EVERFINE)
Manufacturer	: LEDIA	Test by	: Hu Cong
Assessor	: Chunbo Zhou		
Remark	: /		

Test Condition

Temperature	: 25.6Deg	RH	: 41.9%
WL Range	: 380nm-780nm	IP	: 49084 (75%)
Test Mode	: Fast Test	T	: 52 ms
Sensitivity	: High		

Spectrum



Spectral Distribution

CIE1931 Chromaticity Diagram

Colorimetric Parameters

Chromaticity Coordinate: $x = 0.4285, y = 0.3953 / u' = 0.2489, v' = 0.5166$ (duv=-2.37e-03)

CCT= 3074K Prpc WL: Ld=583.4nm Purity=47.2%

Peak WL: Lp=625nm FWHM: =167.1nm Ratio:R=24.3% G=72.0% B=3.6%

Render Index: Ra = 93.9 TM30:Rf=90 Rg=98

R1 =97 R2 =98 R3 =96 R4 =93 R5 =96 R6 =95 R7 =91

R8 =86 R9 =74 R10=99 R11=94 R12=79 R13=99 R14=99 R15=94

WHITE:ANSI_3000K

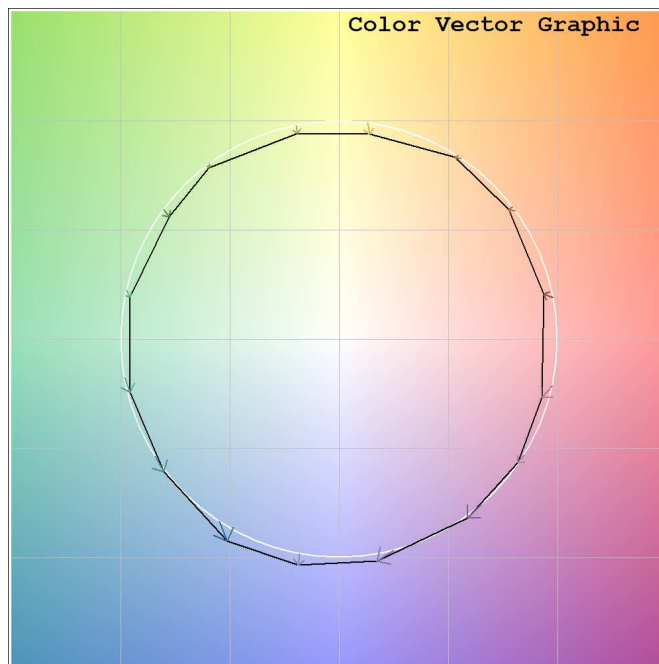
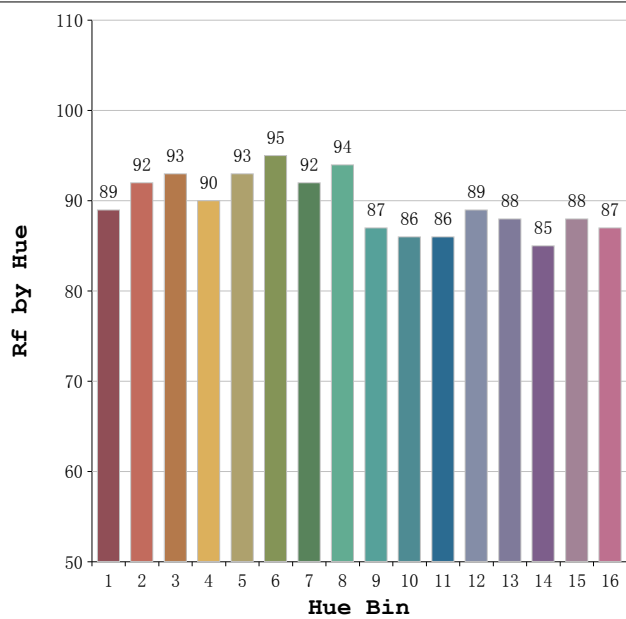
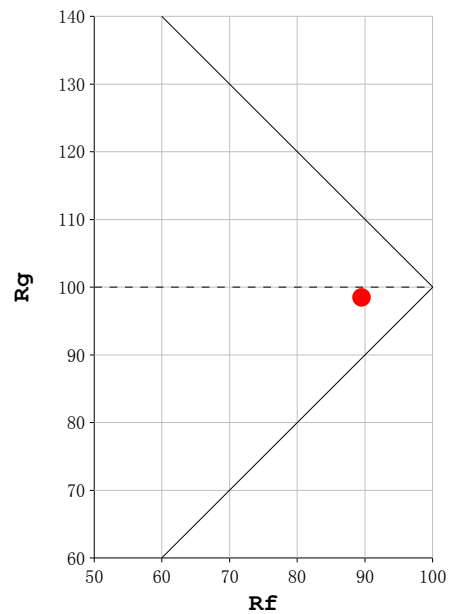
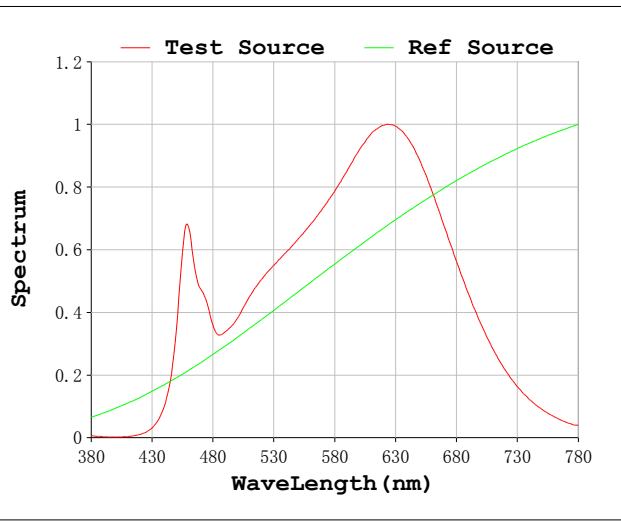
Photometric & Radiometric Parameters

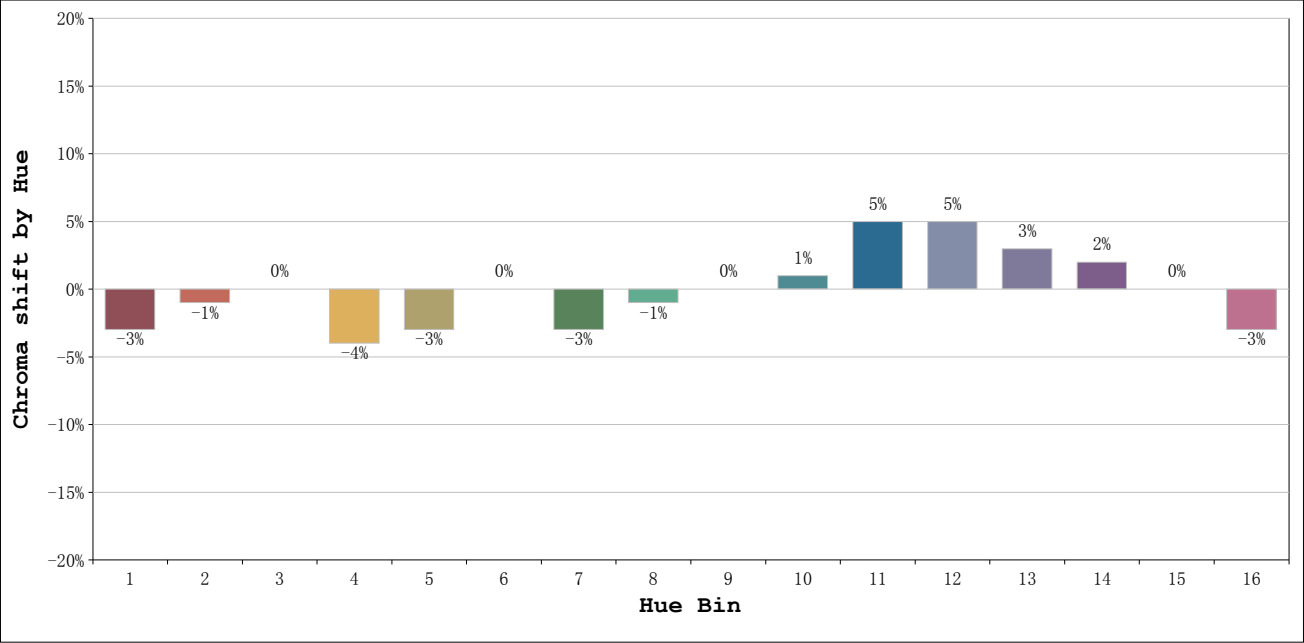
Flux = 1425.8 lm Eff. : 88.39 lm/W Fe = 5.1323 W

Electrical parameters

V = 11.99 V I = 1.345 A P = 16.13 W PF = 1.0000 F=0.00 Hz

Rf: 90 CCT: 3074 K u' : 0.2489
Rg: 98 Duv: -0.0024 v' : 0.5166





			Graphic shift(%)	
Hue Bin	Hue Angle	Rf	Chroma	Hue
1	0. 0° - 22. 5°	89	-3	2
2	22. 5° - 45. 0°	92	-1	2
3	45. 0° - 67. 5°	93	0	3
4	67. 5° - 90. 0°	90	-4	-1
5	90. 0° - 112. 5°	93	-3	0
6	112. 5° - 135. 0°	95	0	1
7	135. 0° - 157. 5°	92	-3	1
8	157. 5° - 180. 0°	94	-1	3
9	180. 0° - 202. 5°	87	0	7
10	202. 5° - 225. 0°	86	1	8
11	225. 0° - 247. 5°	86	5	8
12	247. 5° - 270. 0°	89	5	0
13	270. 0° - 292. 5°	88	3	-7
14	292. 5° - 315. 0°	85	2	-7
15	315. 0° - 337. 5°	88	0	-3
16	337. 5° - 360. 0°	87	-3	-5