

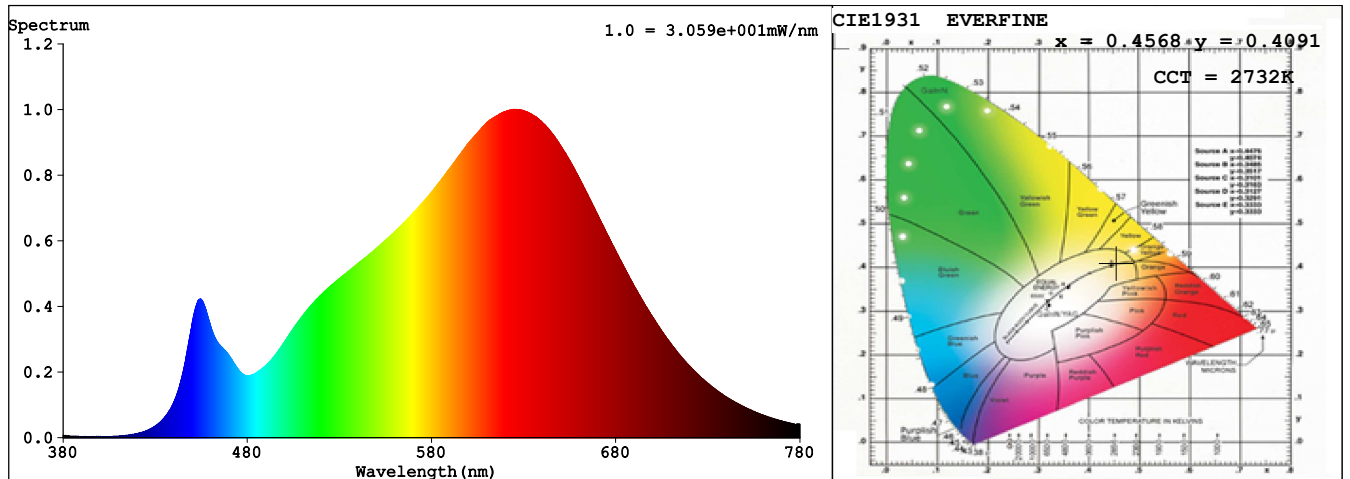
Report Title

Sample	: LED Soft light bar	Date	: 2020-10-27 15:04:42
Specification	: EKF4115HLC90	Standard	: IES LM-79-08
Sample No.	: WY-GX-2020102605	Instrument	: HaasSuite(EVERFINE)
Manufacturer	: LEDIA	Test by	: Hu Cong
Assessor	: Chunbo Zhou		
Remark	: /		

Test Condition

Temperature	: 25.0Deg	RH	: 41.9%
WL Range	: 380nm-780nm	IP	: 52363 (80%)
Test Mode	: Fast Test	T	: 52 ms
Sensitivity	: High		

Spectrum



Spectral Distribution

CIE1931 Chromaticity Diagram

Colorimetric Parameters

Chromaticity Coordinate: $x = 0.4568$ $y = 0.4091$ / $u' = 0.2612$ $v' = 0.5263$ ($duv = -3.06e-04$)

CCT= 2732K Prpc WL: $L_d = 584.1nm$ Purity=59.9%

Peak WL: $L_p = 625nm$ FWHM: $= 153.0nm$ Ratio: R=26.2% G=71.4% B=2.5%

Render Index: $R_a = 93.0$ TM30: $R_f = 91$ $R_g = 100$

R1 =93 R2 =97 R3 =98 R4 =93 R5 =93 R6 =96 R7 =92

R8 =82 R9 =62 R10=91 R11=93 R12=81 R13=94 R14=98 R15=89

WHITE:ANSI_2700K

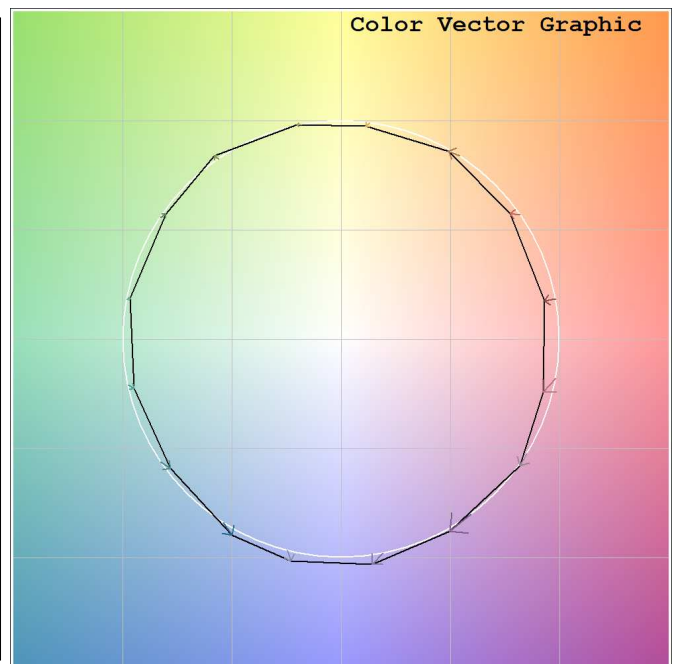
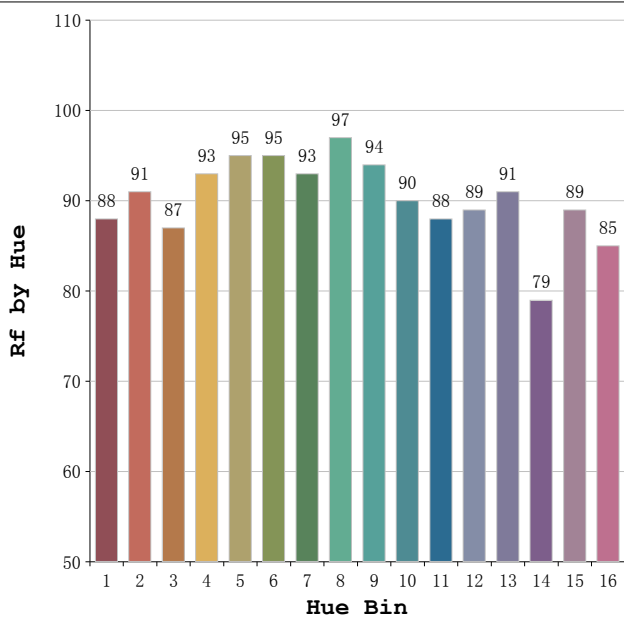
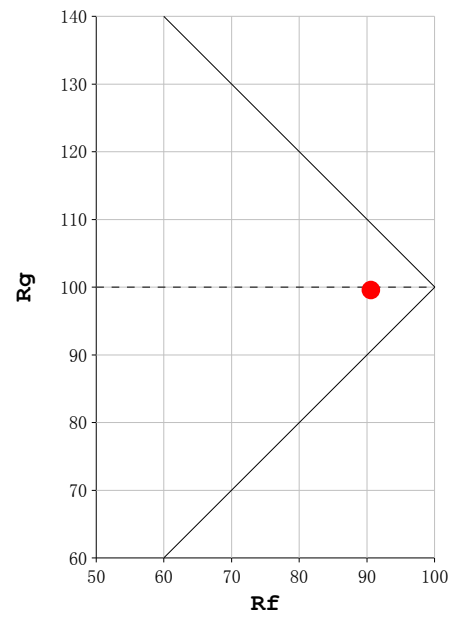
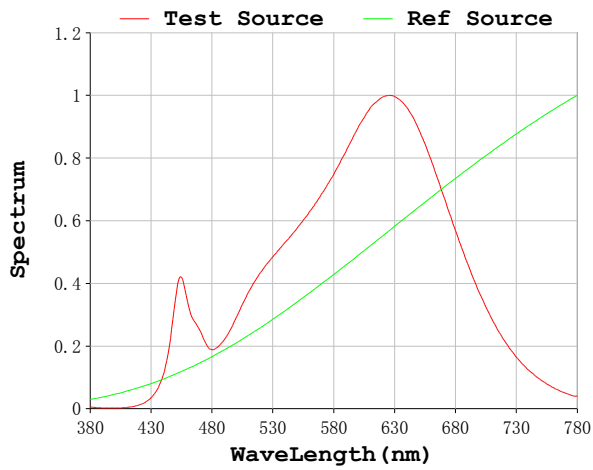
Photometric & Radiometric Parameters

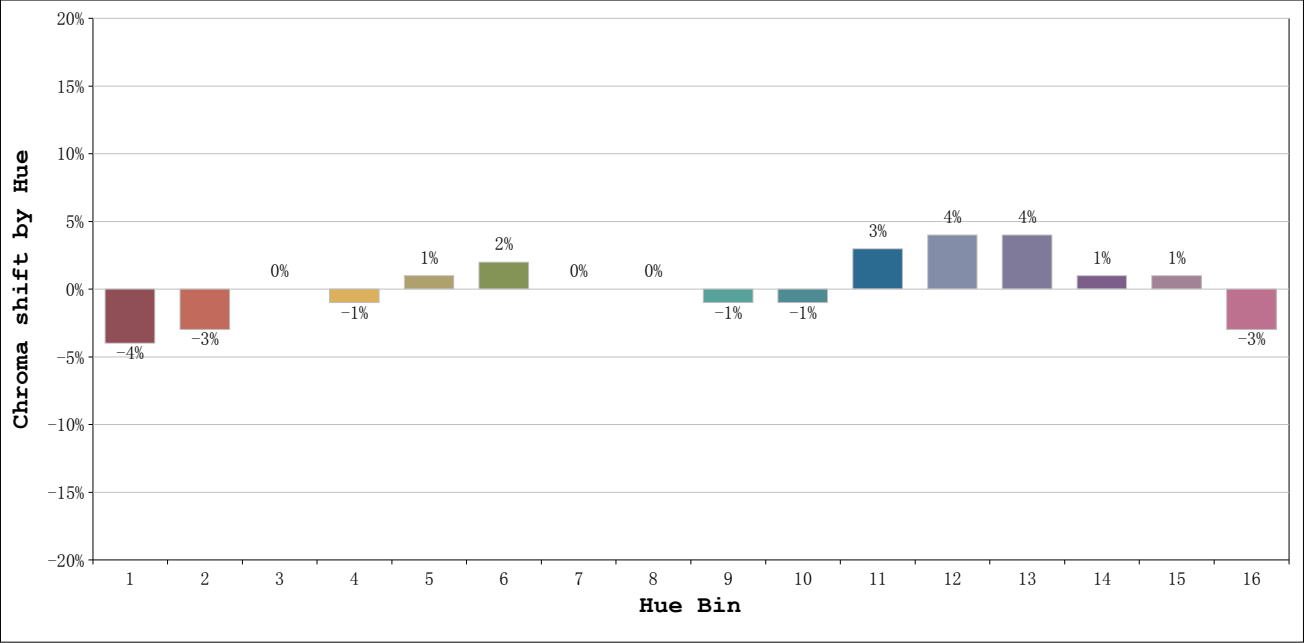
Flux = 1421.7 lm Eff. : 89.72 lm/W $F_e = 5.1027 W$

Electrical parameters

V = 12.00 V I = 1.321 A P = 15.85 W PF = 1.0000 F=0.00 Hz

Rf: 91 CCT: 2732 K u' : 0.2612
Rg: 100 Duv: -0.0003 v' : 0.5263





			Graphic shift(%)	
Hue Bin	Hue Angle	Rf	Chroma	Hue
1	0. 0° - 22. 5°	88	-4	0
2	22. 5° - 45. 0°	91	-3	3
3	45. 0° - 67. 5°	87	0	5
4	67. 5° - 90. 0°	93	-1	2
5	90. 0° - 112. 5°	95	1	2
6	112. 5° - 135. 0°	95	2	1
7	135. 0° - 157. 5°	93	0	-2
8	157. 5° - 180. 0°	97	0	0
9	180. 0° - 202. 5°	94	-1	2
10	202. 5° - 225. 0°	90	-1	5
11	225. 0° - 247. 5°	88	3	7
12	247. 5° - 270. 0°	89	4	2
13	270. 0° - 292. 5°	91	4	-5
14	292. 5° - 315. 0°	79	1	-11
15	315. 0° - 337. 5°	89	1	-5
16	337. 5° - 360. 0°	85	-3	-6