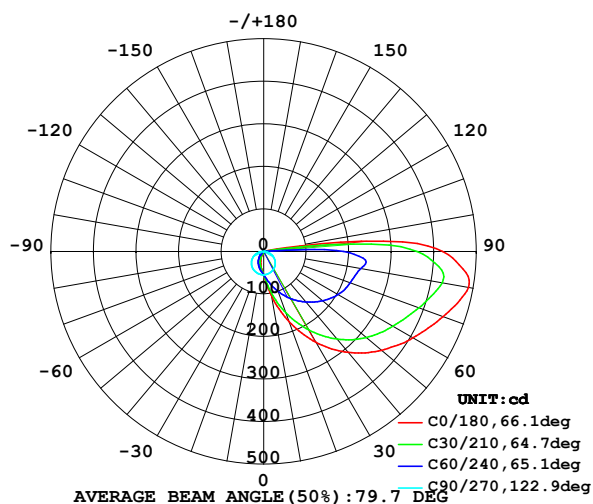


LUMINAIRE PHOTOMETRIC TEST REPORT

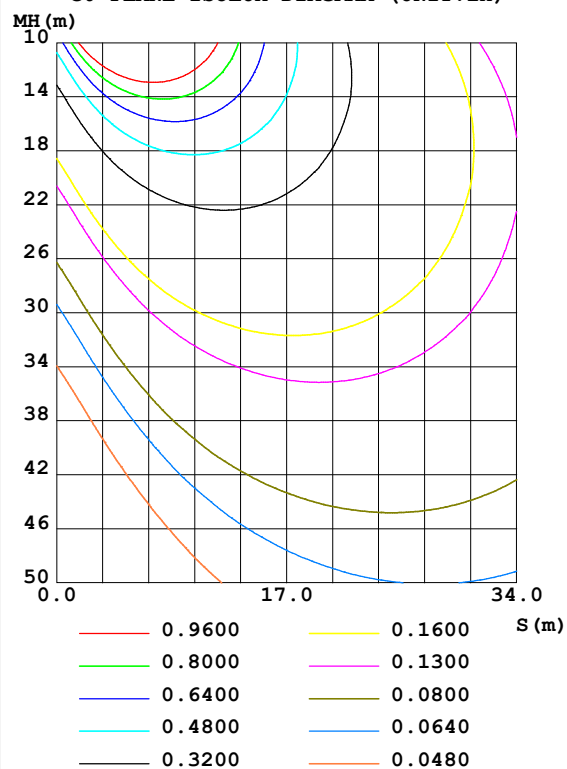
Test:U:12.00V I:0.8120A P:9.744W PF:1.000 Lamp Flux:878.229x1 lm		
NAME: EKF4596SV	SUR.:1*0.08	SERIAL No.:
MFR.: LEDIA		

DATA OF LAMP		PHOTOMETRIC DATA Eff: 90.13 lm/W			
MODEL	EKF4596SV	I _{max} (cd)	489.4	S/MH (C0/180)	0.51
NOMINAL POWER (W)		LOR (%)	100.0	S/MH (C90/270)	1.33
RATED VOLTAGE (V)	12	TOTAL FLUX (lm)	878.23	η UP, DN (C0-180)	5.0, 50.4
NOMINAL FLUX (lm)	878.229	CIE CLASS	DIRECT	η UP, DN (C180-360)	3.8, 40.8
LAMPS INSIDE	1	η up (%)	8.8	CIBSE SHR NOM	0.00
TEST VOLTAGE (V)	12	η down (%)	91.2	CIBSE SHR MAX	1.15

LUMINOUS INTENSITY DISTRIBUTION DIAGRAM



C0 PLANE ISOLUX DIAGRAM (UNIT:lx)



C Range: 0 - 360DEG
 C Interval: 15.0DEG
 Test Speed: HIGH
 Temperature: 24.7DEG
 Operators: Hu Cong
 Test Date: 2021-06-08

γ Range: 0 - 180DEG
 γ Interval: 1.0DEG
 Test System: EVERFINE GO-2000A_V1 SYSTEM V2.0.291
 Humidity: 54.2%
 Test Distance: 10.149m [K=1.0000]
 Remarks:

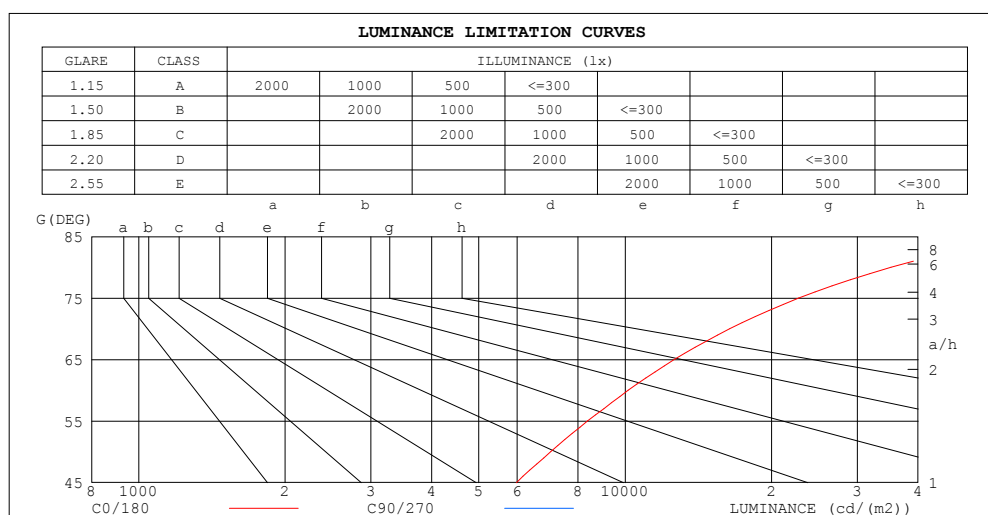
Checker: Hucong

Assessor: Chunbo Zhou

ZONAL FLUX DIAGRAM AND LUMINANCE LIMITATION CURVES

ZONAL FLUX DIAGRAM:

γ	C0	C45	C90	C135	C180	C225	C270	C315	γ	Φ zone	Φ total	%lum, lamp
10	105.2	85.26	54.10	41.39	37.12	41.53	54.63	86.70	0- 10	5.685	5.685	0.65,0.65
20	176.1	129.1	51.52	29.14	20.65	29.36	52.71	133.1	10- 20	20.18	25.86	2.95,2.95
30	247.0	175.0	47.56	16.98	8.978	17.02	49.27	181.2	20- 30	39.85	65.72	7.48,7.48
40	309.9	219.2	42.47	9.815	6.618	9.347	44.30	227.3	30- 40	64.19	129.9	14.8,14.8
50	361.5	257.8	35.71	7.605	5.059	7.169	37.93	267.6	40- 50	91.04	220.9	25.2,25.2
60	405.9	287.7	27.49	5.689	3.564	5.172	30.12	299.0	50- 60	116.9	337.8	38.5,38.5
70	448.6	312.8	18.04	3.807	2.412	3.365	20.95	326.9	60- 70	139.9	477.7	54.4,54.4
80	488.7	345.1	6.554	2.361	1.972	2.040	10.58	359.0	70- 80	160.0	637.7	72.6,72.6
90	421.0	287.6	0.0066	1.300	1.428	1.140	0.6612	302.7	80- 90	163.2	800.9	91.2,91.2
100	54.57	4.222	0.0256	1.115	1.556	0.9221	0.0065	4.419	90-100	73.00	873.9	99.5,99.5
110	1.886	0.2299	0.0448	1.088	1.577	1.050	0.0512	0.3845	100-110	2.364	876.3	99.8,99.8
120	0.4807	0.0319	0.0448	0.9734	1.466	1.012	0.1091	0.2738	110-120	0.6174	876.9	99.9,99.9
130	0.4189	0.0320	0.0512	0.8772	1.350	0.9161	0.1763	0.2654	120-130	0.4738	877.4	99.9,99.9
140	0.4100	0.0639	0.0767	0.7365	1.101	0.7494	0.1794	0.2570	130-140	0.3670	877.8	99.9,99.9
150	0.2821	0.0384	0.1154	0.5375	0.8645	0.5959	0.1868	0.2049	140-150	0.2421	878.0	100,100
160	0.2305	0.0961	0.1448	0.3521	0.6337	0.4547	0.1740	0.1657	150-160	0.1379	878.1	100,100
170	0.0640	0.1730	0.1462	0.2305	0.3956	0.3268	0.1785	0.1586	160-170	0.0662	878.2	100,100
180	0.2626	0.1985	0.1473	0.1793	0.2305	0.2113	0.1793	0.1537	170-180	0.0186	878.2	100,100
DEG	LUMINOUS INTENSITY:cd									UNIT:lm		



LUMINANCE cd/(m2)		
G (DEG)	C0/180	C90/270
85	67402	270
80	35177	472
75	22760	595
70	16393	659
65	12623	680
60	10147	687
55	8372	690
50	7030	694
45	5975	694

C Range: 0 - 360DEG
 C Interval: 15.0DEG
 Test Speed: HIGH
 Temperature:24.7DEG
 Operators:Hu Cong
 Test Date:2021-06-08

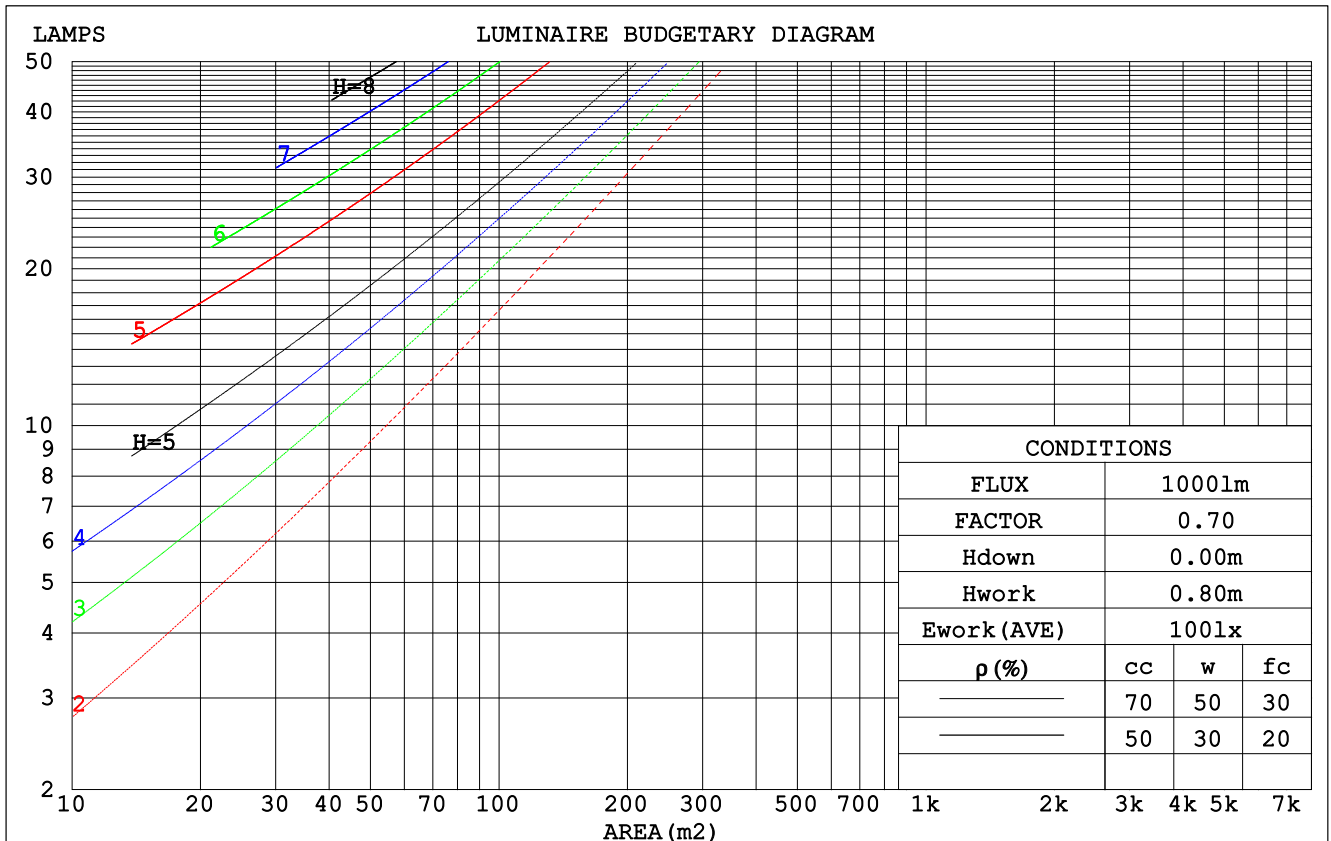
γ Range: 0 - 180DEG
 γ Interval: 1.0DEG
 Test System:EVERFINE GO-2000A_V1 SYSTEM V2.0.291
 Humidity:54.2%
 Test Distance:10.149m [K=1.0000]
 Remarks:

Checker: Hucong

Assessor: Chunbo Zhou

CU AND LUMINAIRE BUDGETARY ESTIMATE DIAGRAM

pcc	80%			70%			50%			30%			10%			0
pw	50%	30%	10%	50%	30%	10%	50%	30%	10%	50%	30%	10%	50%	30%	10%	0
pfc	20%			20%			20%			20%			20%			0
RCR	RCR:Room Cavity Ratio						Coefficients of Utilization(CU)									
0.0	1.17	1.17	1.17	1.13	1.13	1.13	1.06	1.06	1.06	.00	.00	.00	.94	.94	.94	.91
1.0	.89	.81	.74	.85	.78	.72	.79	.73	.68	.73	.69	.64	.68	.64	.61	.57
2.0	.72	.62	.53	.70	.60	.52	.64	.56	.49	.59	.52	.46	.55	.49	.44	.41
3.0	.61	.49	.40	.58	.48	.39	.54	.45	.37	.49	.42	.35	.46	.39	.34	.30
4.0	.52	.41	.32	.50	.39	.31	.46	.37	.29	.42	.34	.28	.39	.32	.27	.24
5.0	.45	.34	.26	.44	.33	.25	.40	.31	.24	.37	.29	.23	.34	.27	.22	.19
6.0	.40	.29	.21	.39	.28	.21	.36	.27	.20	.33	.25	.19	.31	.24	.18	.15
7.0	.36	.25	.18	.35	.25	.18	.32	.23	.17	.30	.22	.16	.27	.21	.15	.13
8.0	.32	.22	.16	.31	.22	.15	.29	.21	.15	.27	.19	.14	.25	.18	.13	.11
9.0	.29	.20	.14	.28	.19	.13	.26	.18	.13	.25	.17	.12	.23	.16	.12	.09
10.0	.27	.18	.12	.26	.17	.12	.24	.17	.11	.23	.16	.11	.21	.15	.10	.08



C Range: 0 - 360DEG
 C Interval: 15.0DEG
 Test Speed: HIGH
 Temperature: 24.7DEG
 Operators: Hu Cong
 Test Date: 2021-06-08

γ Range: 0 - 180DEG
 γ Interval: 1.0DEG
 Test System: EVERFINE GO-2000A_V1 SYSTEM V2.0.291
 Humidity: 54.2%
 Test Distance: 10.149m [K=1.0000]
 Remarks:

Checker: Hucong

Assessor: Chunbo Zhou

WEC AND CCEC

pcc	80%			70%			50%			30%			10%			0
pw	50%	30%	10%	50%	30%	10%	50%	30%	10%	50%	30%	10%	50%	30%	10%	0
pfc	20%			20%			20%			20%			20%			0
RCR	RCR:Room Cavity Ratio						Wall Exitance Coefficients (WEC)									
0.0																
1.0	.558	.317	.100	.547	.312	.099	.528	.303	.097	.510	.294	.094	.494	.286	.092	
2.0	.444	.243	.075	.435	.239	.074	.417	.232	.072	.401	.225	.070	.386	.218	.069	
3.0	.375	.200	.060	.367	.196	.059	.351	.190	.058	.336	.184	.056	.322	.179	.055	
4.0	.326	.169	.050	.318	.167	.049	.304	.161	.048	.291	.156	.047	.279	.151	.046	
5.0	.289	.147	.043	.282	.145	.042	.269	.140	.041	.257	.136	.040	.246	.131	.039	
6.0	.259	.130	.037	.253	.128	.037	.241	.124	.036	.231	.120	.035	.221	.116	.034	
7.0	.235	.116	.033	.230	.114	.033	.219	.111	.032	.209	.107	.031	.200	.104	.031	
8.0	.215	.105	.030	.210	.104	.029	.201	.100	.029	.192	.097	.028	.184	.094	.027	
9.0	.198	.096	.027	.194	.095	.027	.185	.092	.026	.177	.089	.025	.170	.086	.025	
10.0	.184	.088	.024	.180	.087	.024	.172	.084	.024	.165	.082	.023	.158	.079	.023	

pcc	80%			70%			50%			30%			10%			0
pw	50%	30%	10%	50%	30%	10%	50%	30%	10%	50%	30%	10%	50%	30%	10%	0
pfc	20%			20%			20%			20%			20%			0
RCR	RCR:Room Cavity Ratio						Ceiling Cavity Exitance Coefficients (CCEC)									
0.0	.258	.258	.258	.220	.220	.220	.150	.150	.150	.086	.086	.086	.028	.028	.028	
1.0	.265	.222	.182	.227	.190	.157	.155	.131	.109	.089	.076	.063	.029	.024	.020	
2.0	.261	.199	.148	.223	.172	.128	.153	.119	.089	.088	.069	.052	.028	.022	.017	
3.0	.253	.183	.128	.217	.158	.111	.149	.110	.078	.086	.064	.046	.028	.021	.015	
4.0	.245	.171	.116	.210	.148	.100	.144	.103	.071	.083	.060	.042	.027	.020	.014	
5.0	.236	.162	.107	.202	.140	.093	.139	.098	.066	.081	.057	.039	.026	.019	.013	
6.0	.227	.154	.102	.195	.133	.089	.135	.093	.063	.078	.055	.037	.025	.018	.012	
7.0	.218	.147	.098	.188	.128	.085	.130	.090	.060	.075	.053	.036	.024	.017	.012	
8.0	.211	.142	.094	.181	.123	.082	.125	.086	.058	.073	.051	.035	.024	.017	.012	
9.0	.203	.137	.092	.175	.119	.080	.121	.083	.057	.071	.049	.034	.023	.016	.011	
10.0	.196	.132	.090	.169	.115	.078	.118	.081	.056	.069	.048	.033	.022	.016	.011	

C Range: 0 - 360DEG
 C Interval: 15.0DEG
 Test Speed: HIGH
 Temperature:24.7DEG
 Operators:Hu Cong
 Test Date:2021-06-08

γ Range: 0 - 180DEG
 γ Interval: 1.0DEG
 Test System:EVERFINE GO-2000A_V1 SYSTEM V2.0.291
 Humidity:54.2%
 Test Distance:10.149m [K=1.0000]
 Remarks:

Checker: Hucong

Assessor: Chunbo Zhou

UGR(Unified Glare Rating) Table

ceiling/cavity	0.7	0.7	0.5	0.5	0.3	0.7	0.7	0.5	0.5	0.3
walls	0.5	0.3	0.5	0.3	0.3	0.5	0.3	0.5	0.3	0.3
working plane	0.2	0.2	0.2	0.2	0.2	0.2	0.2	0.2	0.2	0.2
Room dimensions	Viewed crosswise					Viewed endwise				
x = 2H y = 2H	23.3	25.0	23.7	25.4	25.8	16.3	18.1	16.8	18.5	18.9
3H	27.2	28.8	27.6	29.3	29.7	18.1	19.8	18.5	20.2	20.6
4H	29.4	31.0	29.8	31.4	31.9	18.9	20.5	19.3	20.9	21.4
6H	31.8	33.3	32.3	33.8	34.3	19.5	21.0	20.0	21.5	22.0
8H	33.1	34.6	33.6	35.0	35.6	19.7	21.2	20.2	21.7	22.2
12H	34.5	35.9	35.0	36.4	36.9	19.8	21.3	20.3	21.8	22.3
4H 2H	23.9	25.5	24.4	25.9	26.4	20.2	21.8	20.6	22.2	22.7
3H	28.1	29.6	28.6	30.0	30.6	22.4	23.8	22.9	24.3	24.8
4H	30.5	31.9	31.0	32.4	32.9	23.5	24.8	24.0	25.3	25.9
6H	33.2	34.4	33.7	34.9	35.5	24.4	25.6	24.9	26.1	26.7
8H	34.6	35.8	35.2	36.3	36.9	24.7	25.9	25.2	26.4	27.0
12H	36.1	37.2	36.7	37.8	38.4	24.9	26.0	25.5	26.6	27.2
8H 4H	31.0	32.2	31.5	32.7	33.3	26.4	27.6	27.0	28.1	28.7
6H	34.0	35.0	34.6	35.6	36.2	28.0	29.0	28.6	29.6	30.2
8H	35.7	36.6	36.3	37.2	37.8	28.7	29.6	29.3	30.2	30.9
12H	37.4	38.3	38.0	38.9	39.6	29.2	30.1	29.9	30.7	31.4
12H 4H	31.0	32.1	31.6	32.7	33.3	27.4	28.5	28.0	29.0	29.7
6H	34.2	35.1	34.8	35.7	36.4	29.4	30.3	30.0	30.9	31.6
8H	36.0	36.8	36.6	37.4	38.1	30.4	31.2	31.0	31.8	32.5
Variations with the observer position at spacings:										
S = 1.0H	+ 0.1 / - 0.1					+ 0.1 / - 0.1				
1.5H	+ 0.2 / - 0.3					+ 0.2 / - 0.2				
2.0H	+ 0.3 / - 0.4					+ 0.3 / - 0.3				

CIE Pub.117 Corrected 878.2 lm Total Lamp Luminous Flux. (8log(F/F0) = -0.5)

C Range: 0 - 360DEG
 C Interval: 15.0DEG
 Test Speed: HIGH
 Temperature: 24.7DEG
 Operators: Hu Cong
 Test Date: 2021-06-08

γ Range: 0 - 180DEG
 γ Interval: 1.0DEG
 Test System: EVERFINE GO-2000A_V1 SYSTEM V2.0.291
 Humidity: 54.2%
 Test Distance: 10.149m [K=1.0000]
 Remarks:

Checker: Hucong

Assessor: Chunbo Zhou

UTILIZATION FACTORS TABLE

REFLECTANCE										
Ceiling	0.8	0.8	0.8	0.7	0.7	0.7	0.5	0.5	0.5	0
Walls	0.7	0.5	0.3	0.7	0.5	0.3	0.7	0.5	0.3	0
Working plane	0.2	0.2	0.2	0.2	0.2	0.2	0.2	0.2	0.2	0
ROOM INDEX	UTILIZATION FACTORS (PERCENT) $k(RI) \times RCR = 5$									
$k = 0.60$	41	27	18	40	26	18	38	26	18	10
0.80	49	34	24	48	33	24	45	32	24	15
1.00	56	41	31	55	40	30	52	42	30	20
1.25	63	48	37	61	47	37	57	45	36	25
1.50	68	53	42	66	52	42	62	50	41	30
2.00	76	62	51	74	60	50	69	58	49	37
2.50	82	68	58	79	66	57	73	63	55	42
3.00	86	73	63	83	71	62	77	68	60	47
4.00	92	81	72	88	78	70	82	74	67	54
5.00	95	86	78	92	83	76	86	78	72	59
ROOM INDEX	UF (total)									Direct
According to DIN EN 13032-2 2004			Suspended					SHRNOM = 1.25		

C Range: 0 - 360DEG
 C Interval: 15.0DEG
 Test Speed: HIGH
 Temperature: 24.7DEG
 Operators: Hu Cong
 Test Date: 2021-06-08

Checker: Hucong

γ Range: 0 - 180DEG
 γ Interval: 1.0DEG
 Test System: EVERFINE GO-2000A_V1 SYSTEM V2.0.291
 Humidity: 54.2%
 Test Distance: 10.149m [K=1.0000]
 Remarks:

Assessor: Chunbo Zhou

ISOCANDELA DIAGRAM

Conical surface Flux(90deg):

172.06 lm

%lum = 19.6%

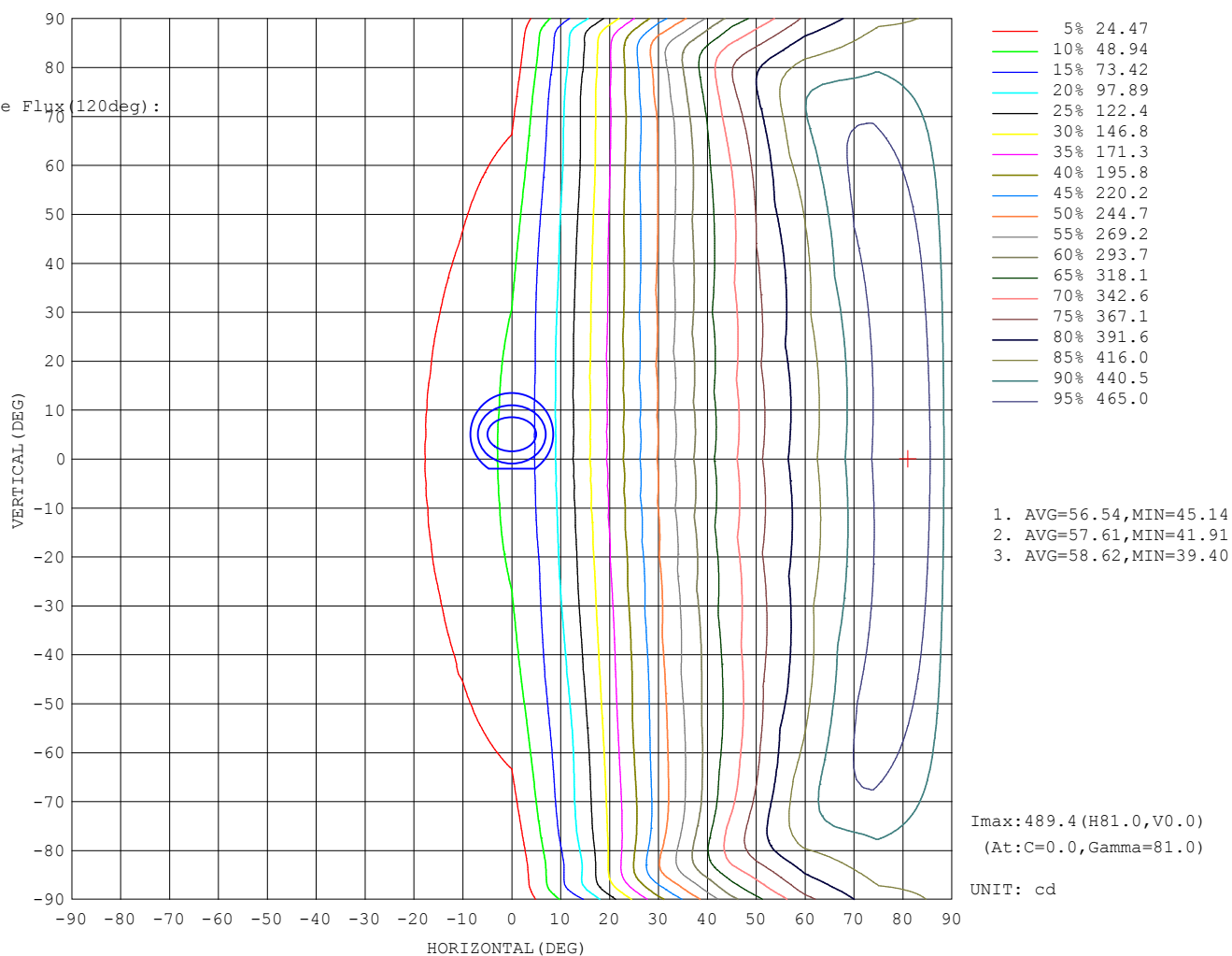
%lamp = 19.6%

Conical surface Flux(120deg):

337.8 lm

%lum = 38.5%

%lamp = 38.5%



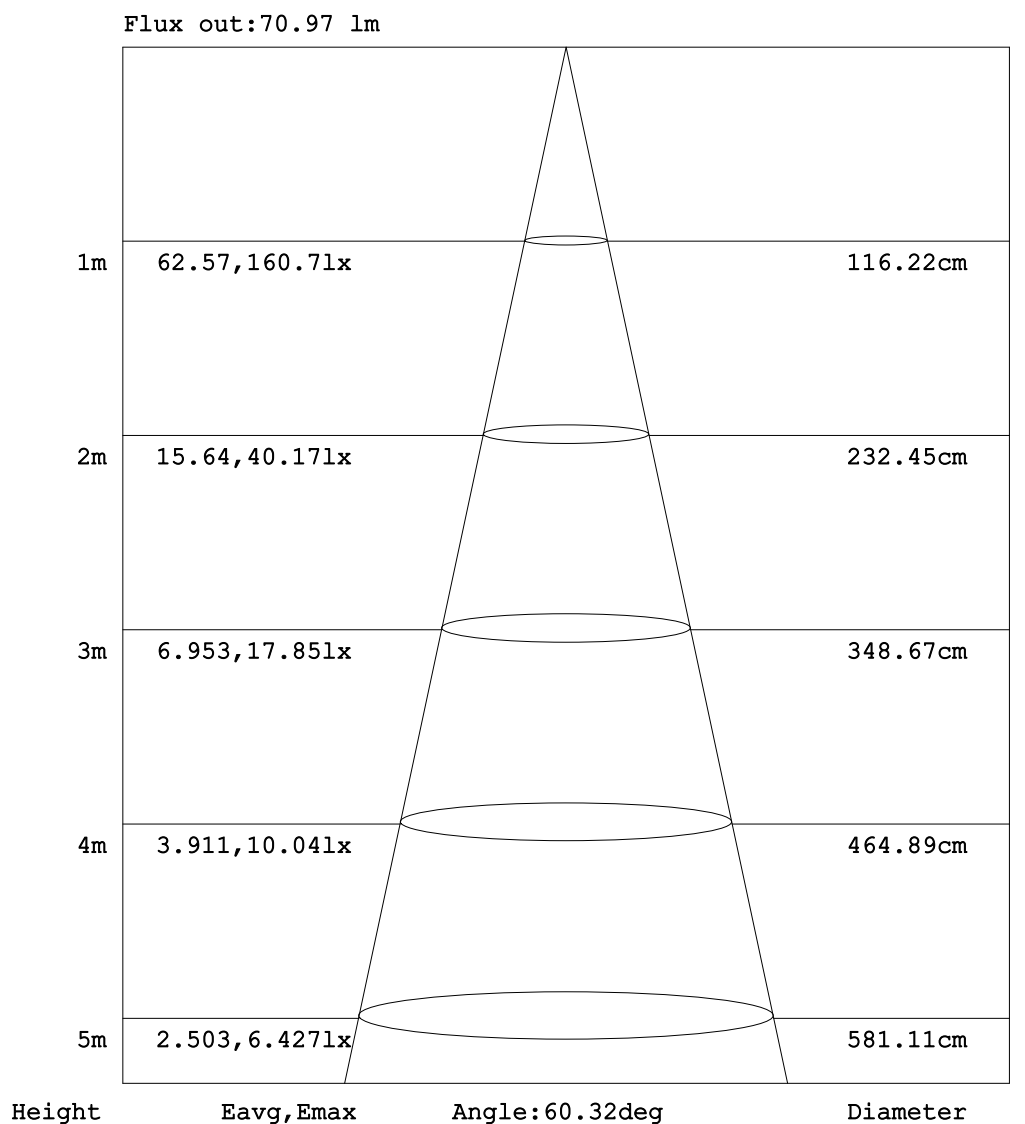
C Range: 0 - 360DEG
C Interval: 15.0DEG
Test Speed: HIGH
Temperature:24.7DEG
Operators:Hu Cong
Test Date:2021-06-08

γ Range: 0 - 180DEG
 γ Interval: 1.0DEG
Test System:EVERFINE GO-2000A_V1 SYSTEM V2.0.291
Humidity:54.2%
Test Distance:10.149m [K=1.0000]
Remarks:

Checker: Hucong

Assessor: Chunbo Zhou

AAI Figure



Note:The Curves indicate the illuminated area and the average illumination when the luminaire is at different distance.

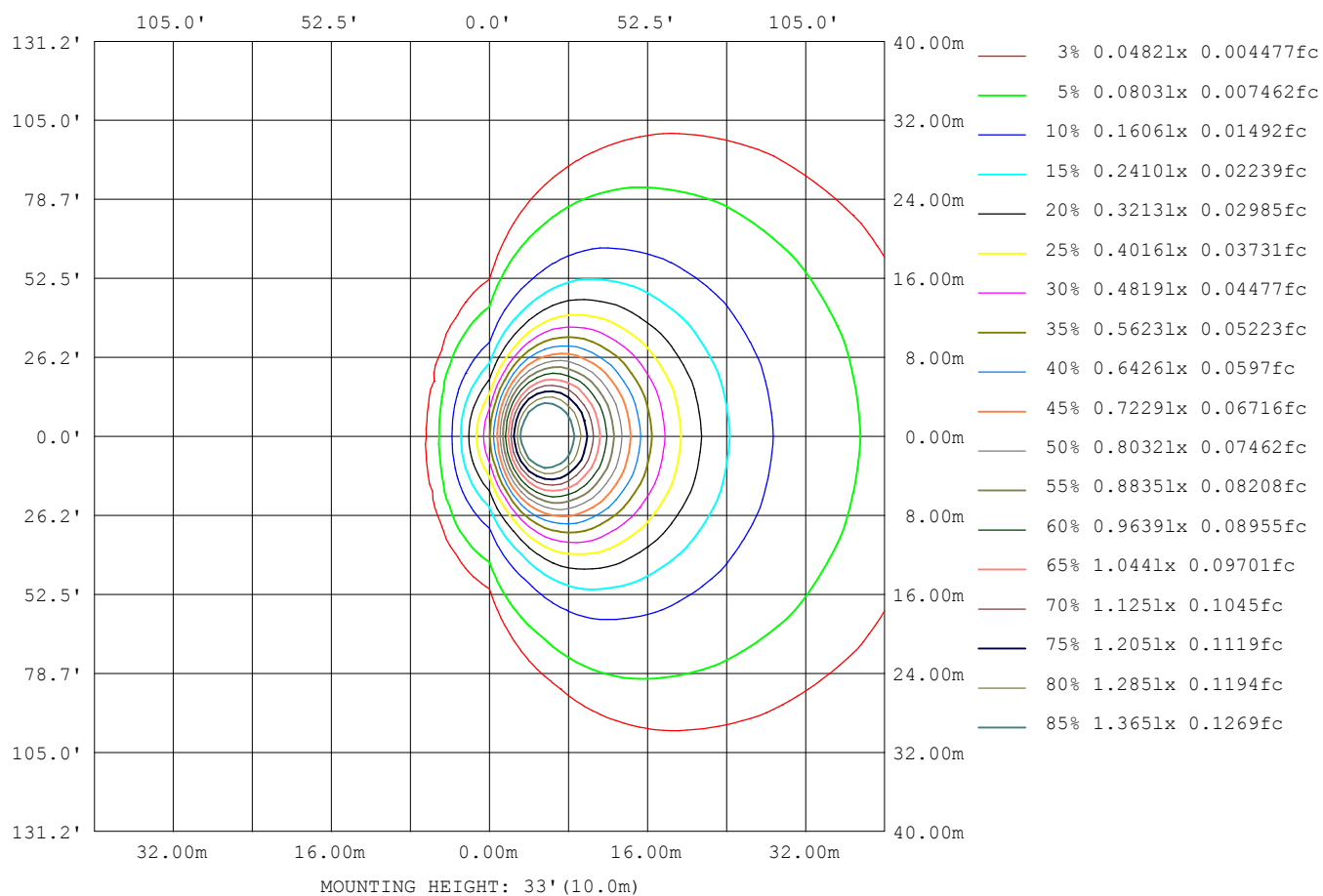
C Range: 0 - 360DEG
C Interval: 15.0DEG
Test Speed: HIGH
Temperature:24.7DEG
Operators:Hu Cong
Test Date:2021-06-08

γ Range: 0 - 180DEG
 γ Interval: 1.0DEG
Test System:EVERFINE GO-2000A_V1 SYSTEM V2.0.291
Humidity:54.2%
Test Distance:10.149m [K=1.0000]
Remarks:

Checker: Hucong

Assessor: Chunbo Zhou

ISOLUX DIAGRAM



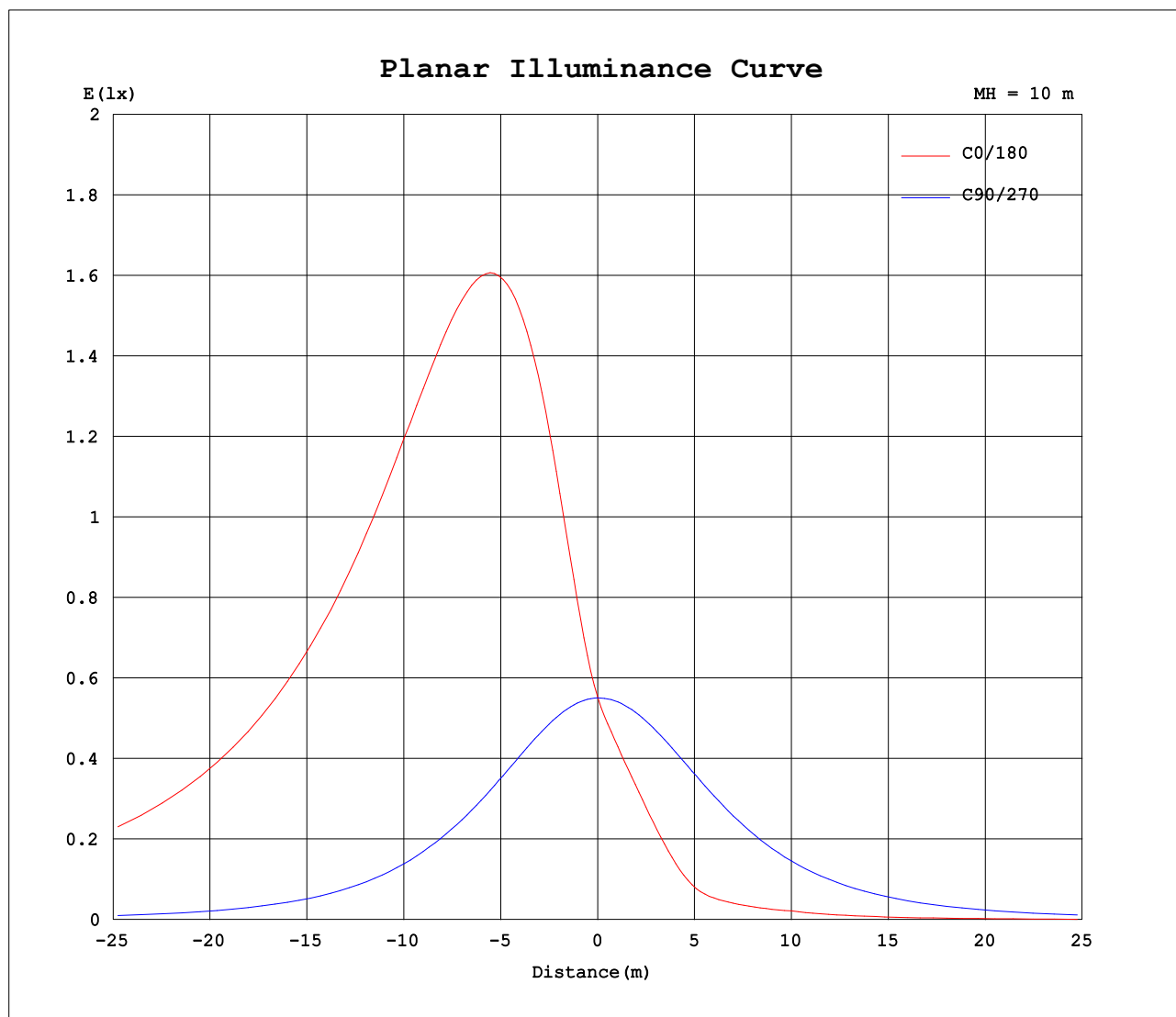
C Range: 0 - 360DEG
C Interval: 15.0DEG
Test Speed: HIGH
Temperature: 24.7DEG
Operators: Hu Cong
Test Date: 2021-06-08

Checker: Hucong

γ Range: 0 - 180DEG
 γ Interval: 1.0DEG
Test System: EVERFINE GO-2000A_V1 SYSTEM V2.0.291
Humidity: 54.2%
Test Distance: 10.149m [K=1.0000]
Remarks:

Assessor: Chunbo Zhou

Planar Illuminance Curve



C Range: 0 - 360DEG
C Interval: 15.0DEG
Test Speed: HIGH
Temperature: 24.7DEG
Operators: Hu Cong
Test Date: 2021-06-08

γ Range: 0 - 180DEG
 γ Interval: 1.0DEG
Test System: EVERFINE GO-2000A_V1 SYSTEM V2.0.291
Humidity: 54.2%
Test Distance: 10.149m [K=1.0000]
Remarks:

Checker: Hucong

Assessor: Chunbo Zhou

LUMINOUS DISTRIBUTION INTENSITY DATA

Table--1

UNIT: cd

C (DEG) γ (DEG)	0	15	30	45	60	75	90	105	120	135	150	165	180	195	210	225	240	255	270
0	55.2	55.0	55.2	55.1	55.2	55.1	55.1	55.1	55.0	55.1	54.9	55.1	55.2	55.0	55.2	55.1	55.2	55.1	55.1
5	75.5	74.1	71.7	67.6	63.3	58.7	54.8	51.8	49.4	47.7	46.3	45.5	45.3	45.5	46.4	47.7	49.7	52.0	55.0
10	105	102	95.7	85.3	74.0	62.6	54.1	48.7	44.6	41.4	38.9	37.5	37.1	37.5	39.2	41.5	44.9	48.9	54.6
15	140	135	124	106	86.5	66.8	53.0	45.6	39.8	35.3	31.7	29.6	29.0	29.6	32.0	35.5	40.2	45.9	53.9
20	176	169	154	129	100	71.3	51.5	42.2	35.0	29.1	24.3	21.5	20.7	21.5	24.7	29.4	35.5	42.7	52.7
25	212	204	184	152	114	75.7	49.7	38.7	30.1	22.9	17.2	14.1	13.2	14.0	17.4	23.1	30.7	39.3	51.2
30	247	239	214	175	129	80.2	47.6	35.1	25.3	17.0	11.6	9.58	8.98	9.36	11.5	17.0	25.8	35.8	49.3
35	280	271	242	197	142	84.5	45.2	31.5	20.5	12.2	9.05	7.97	7.49	7.75	8.69	12.0	20.9	32.1	47.0
40	310	300	269	219	155	88.5	42.5	27.9	16.2	9.81	7.93	7.01	6.62	6.84	7.53	9.35	16.4	28.4	44.3
45	338	327	294	240	168	92.7	39.3	24.9	13.3	9.34	7.79	7.24	6.33	6.03	6.71	8.17	12.7	24.8	41.3
50	361	350	315	258	181	95.2	35.7	20.9	10.8	7.60	6.27	5.36	5.06	5.18	5.86	7.17	10.3	21.2	37.9
55	384	372	334	274	193	97.7	31.6	17.7	9.31	6.68	5.45	4.59	4.26	4.41	5.01	6.19	8.81	17.8	34.2
60	406	392	351	288	203	100	27.5	14.6	7.89	5.69	4.64	3.86	3.56	3.68	4.21	5.17	7.40	14.6	30.1
65	427	413	369	300	211	103	23.0	11.4	6.34	4.69	3.89	3.21	2.92	3.06	3.49	4.22	5.92	11.4	25.7
70	449	433	388	313	217	106	18.0	6.80	4.75	3.81	3.25	2.71	2.41	2.56	2.87	3.37	4.44	6.95	21.0
75	471	454	408	326	222	107	12.3	2.97	3.48	3.03	2.72	2.36	2.09	2.21	2.36	2.64	3.26	2.95	15.9
80	489	473	426	345	232	104	6.55	1.44	2.52	2.36	2.27	2.17	1.97	2.00	1.98	2.04	2.21	1.52	10.6
85	470	456	414	342	241	102	1.88	0.71	1.71	1.78	1.93	2.07	1.91	1.88	1.68	1.55	1.38	0.77	5.50
90	421	407	361	288	188	75.3	0.01	0.41	1.06	1.30	1.52	1.59	1.43	1.43	1.25	1.14	0.83	0.39	0.66
95	282	265	205	119	22.1	0.04	0.01	0.29	0.69	1.06	1.34	1.53	1.42	1.32	1.18	0.89	0.54	0.20	0.00
100	54.6	45.3	19.7	4.22	0.62	0.00	0.03	0.31	0.69	1.11	1.36	1.57	1.56	1.41	1.28	0.92	0.59	0.20	0.01
105	4.69	3.87	2.36	1.00	0.13	0.00	0.04	0.32	0.69	1.11	1.40	1.58	1.58	1.52	1.36	1.01	0.63	0.20	0.03
110	1.89	1.51	0.58	0.23	0.03	0.02	0.04	0.33	0.74	1.09	1.40	1.56	1.58	1.55	1.34	1.05	0.63	0.23	0.05
115	0.63	0.48	0.40	0.11	0.04	0.03	0.04	0.33	0.74	1.06	1.38	1.48	1.57	1.53	1.29	1.06	0.63	0.24	0.08
120	0.48	0.37	0.26	0.03	0.03	0.00	0.04	0.34	0.69	0.97	1.31	1.40	1.47	1.46	1.25	1.01	0.59	0.24	0.11
125	0.42	0.35	0.23	0.01	0.00	0.01	0.04	0.34	0.66	0.93	1.23	1.34	1.40	1.39	1.17	0.97	0.56	0.25	0.19
130	0.42	0.33	0.17	0.03	0.00	0.05	0.05	0.35	0.63	0.88	1.15	1.26	1.35	1.31	1.09	0.92	0.54	0.25	0.18
135	0.44	0.26	0.09	0.06	0.03	0.10	0.06	0.34	0.61	0.85	1.11	1.19	1.25	1.21	0.99	0.84	0.51	0.25	0.16
140	0.41	0.23	0.08	0.06	0.04	0.10	0.08	0.30	0.56	0.74	0.99	1.07	1.10	1.10	0.89	0.75	0.47	0.25	0.18
145	0.35	0.05	0.05	0.04	0.06	0.11	0.10	0.26	0.50	0.63	0.86	0.94	0.97	0.98	0.79	0.67	0.45	0.25	0.21
150	0.28	0.03	0.03	0.04	0.06	0.11	0.12	0.23	0.42	0.54	0.73	0.77	0.86	0.87	0.69	0.60	0.35	0.24	0.19
155	0.26	0.03	0.02	0.06	0.06	0.12	0.14	0.21	0.37	0.46	0.61	0.63	0.74	0.75	0.59	0.52	0.34	0.24	0.17
160	0.23	0.04	0.04	0.10	0.06	0.13	0.14	0.18	0.32	0.35	0.50	0.53	0.63	0.63	0.51	0.45	0.27	0.23	0.17
165	0.06	0.06	0.04	0.12	0.10	0.15	0.15	0.16	0.28	0.28	0.40	0.41	0.52	0.52	0.46	0.38	0.25	0.22	0.18
170	0.06	0.10	0.08	0.17	0.14	0.15	0.15	0.15	0.24	0.23	0.32	0.32	0.40	0.41	0.33	0.33	0.23	0.20	0.18
175	0.15	0.17	0.13	0.19	0.15	0.16	0.15	0.15	0.20	0.19	0.24	0.22	0.29	0.33	0.24	0.26	0.17	0.19	0.18
180	0.26	0.24	0.19	0.20	0.17	0.16	0.15	0.15	0.18	0.18	0.19	0.19	0.23	0.22	0.22	0.21	0.19	0.19	0.18

C Range: 0 - 360DEG
C Interval: 15.0DEG
Test Speed: HIGH
Temperature:24.7DEG
Operators:Hu Cong
Test Date:2021-06-08

γ Range: 0 - 180DEG
γ Interval: 1.0DEG
Test System:EVERFINE GO-2000A_V1 SYSTEM V2.0.291
Humidity:54.2%
Test Distance:10.149m [K=1.0000]
Remarks:

Checker: Hucong

Assessor: Chunbo Zhou

LUMINOUS DISTRIBUTION INTENSITY DATA

Table--2

UNIT: cd

C (DEG) γ (DEG)	285	300	315	330	345														
0	55.1	55.0	55.1	54.9	55.1														
5	59.1	63.5	68.1	71.5	74.2														
10	63.8	75.0	86.7	95.8	103														
15	69.0	88.6	109	125	136														
20	74.6	104	133	156	171														
25	80.3	120	157	186	205														
30	86.2	135	181	217	239														
35	92.1	150	205	247	272														
40	97.7	165	227	274	301														
45	103	179	249	299	328														
50	107	193	268	321	352														
55	111	206	284	341	373														
60	114	217	299	359	395														
65	119	226	312	377	416														
70	123	233	327	396	436														
75	125	242	342	416	459														
80	124	250	359	435	476														
85	123	258	356	423	459														
90	93.1	210	303	371	410														
95	0.53	31.4	127	219	266														
100	0.03	1.04	4.42	21.7	42.8														
105	0.03	0.20	1.07	2.91	4.11														
110	0.04	0.18	0.38	0.69	1.67														
115	0.04	0.17	0.29	0.37	0.58														
120	0.04	0.17	0.27	0.32	0.45														
125	0.06	0.17	0.27	0.30	0.40														
130	0.08	0.17	0.27	0.28	0.37														
135	0.08	0.16	0.26	0.27	0.31														
140	0.08	0.15	0.26	0.24	0.30														
145	0.08	0.14	0.22	0.21	0.28														
150	0.08	0.14	0.20	0.17	0.24														
155	0.08	0.14	0.17	0.15	0.20														
160	0.10	0.14	0.17	0.15	0.17														
165	0.14	0.15	0.16	0.14	0.16														
170	0.14	0.14	0.16	0.15	0.16														
175	0.14	0.14	0.16	0.15	0.15														
180	0.14	0.14	0.15	0.15	0.15														

C Range: 0 - 360DEG
 C Interval: 15.0DEG
 Test Speed: HIGH
 Temperature:24.7DEG
 Operators:Hu Cong
 Test Date:2021-06-08

γ Range: 0 - 180DEG
 γ Interval: 1.0DEG
 Test System:EVERFINE GO-2000A_V1 SYSTEM V2.0.291
 Humidity:54.2%
 Test Distance:10.149m [K=1.0000]
 Remarks:

Checker: Hucong

Assessor: Chunbo Zhou