

浙大三色

Email:sensing@sensingm.com

Tel:+86 571 85021543 Fax:+86 571 87977635

OML

Client:

LumCAT: U500-DC24V-R

Luminaire:

Report No:

Voltage(V): 24.0000

Test No: OML-LA-21082001

Current(A): 0.3100

LampCAT: LED

Power (W): 7.4590

Lamp flux(lm): -1.0

PF: 0.0000

Number of Lamps: 1

Ballast type:

Length(mm): 1000

Width(mm): 20

Phm Type: C

Height(mm): 120

Photometric Results

Lumens(lm): 1.34, Efficiency(%): 0.00% , Luminous Efficacy(lm/W): 0.18

Central intensity(cd): 1.379, Maximum intensity(cd): 1.379

Angle of maximum intensity: C=0.0 γ =0.0

Beam Angle(50%Imax): [C0/180]Total=72.5

[C90/270]Total=56.3

Field angle(10%Imax): [C0/180]Total=92.0

[C90/270]Total=80.0

Maximum s/h(1/2): C0_180=1.11 C90_270=0.88

Maximum s/h(1/4): C0_180=1.09 C90_270=0.83

Up flux rate of lamp(%): 0.00%

Down flux rate of lamp(%): 0.00%

Up flux rate of LUM(%): - -

Down flux rate of LUM(%): 100.00%

CIE Type : Direct lighting

Output flux ratio in π solid angle : 100.000%

Equipment: GMS-3000H
Temperature(°C): 25.0

Date: 2021-8-20
Humidity(%): 55.0%

Operator: 002
Distance(m): 14.46

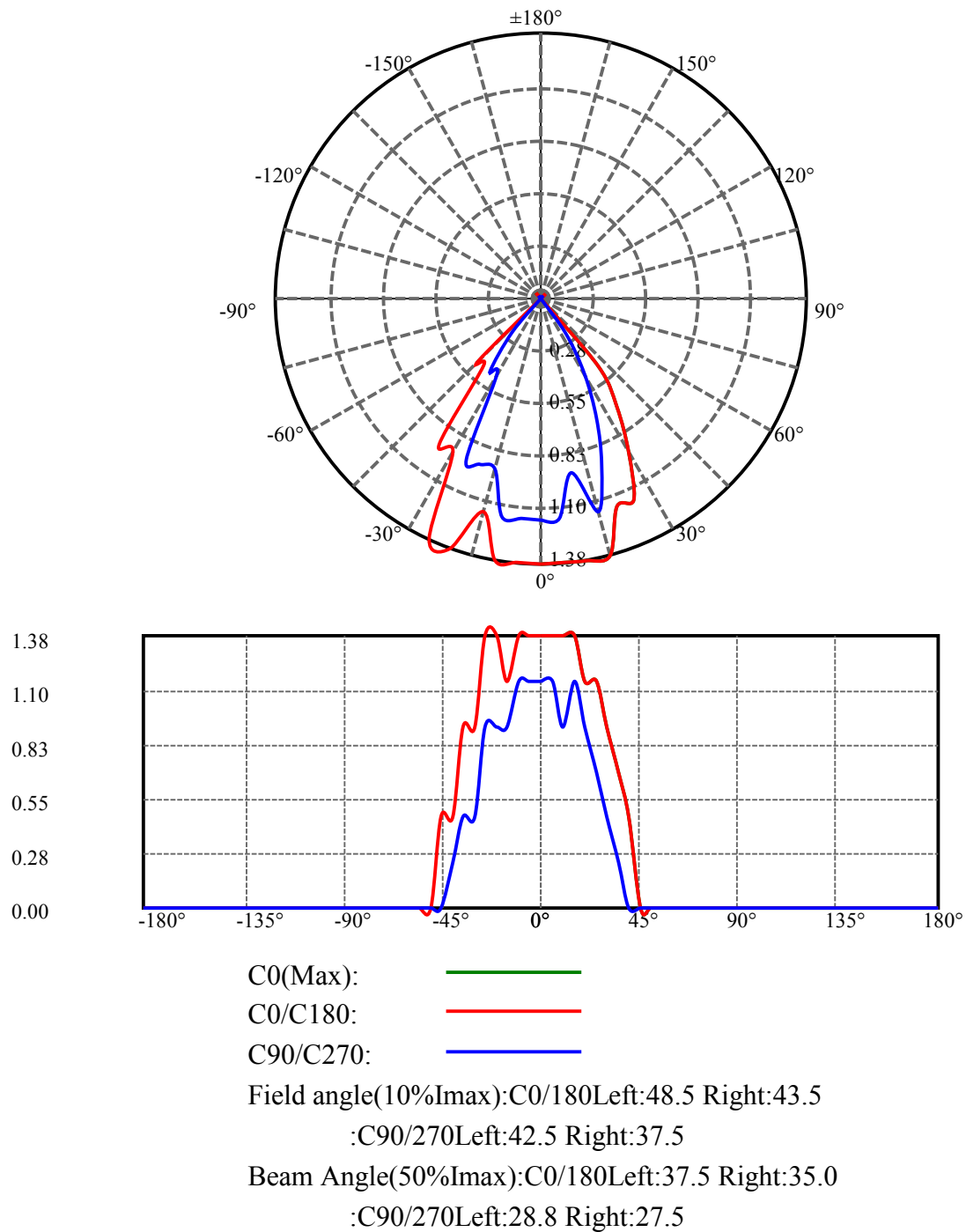
$\gamma(^{\circ})$	Average I(cd)	Zonal F(lm)	Sum F(lm)	Eff Flux(%)	Eff Sum(%)
0.0	1.245	0.000	0	0.00%	0.00%
5.0	1.274	0.030	0.03	0.00%	2.24%
10.0	1.197	0.088	0.118	0.00%	8.83%
15.0	1.140	0.139	0.257	0.00%	19.16%
20.0	1.044	0.180	0.437	0.00%	32.57%
25.0	0.977	0.212	0.649	0.00%	48.37%
30.0	0.776	0.222	0.871	0.00%	64.90%
35.0	0.594	0.202	1.072	0.00%	79.93%
40.0	0.326	0.153	1.226	0.00%	91.36%
45.0	0.144	0.087	1.313	0.00%	97.84%
50.0	0.000	0.029	1.342	0.00%	100.00%
55.0	0.000	0.000	1.342	0.00%	100.00%
60.0	0.000	0.000	1.342	0.00%	100.00%
65.0	0.000	0.000	1.342	0.00%	100.00%
70.0	0.000	0.000	1.342	0.00%	100.00%
75.0	0.000	0.000	1.342	0.00%	100.00%
80.0	0.000	0.000	1.342	0.00%	100.00%
85.0	0.000	0.000	1.342	0.00%	100.00%
90.0	0.000	0.000	1.342	0.00%	100.00%
95.0	0.000	0.000	1.342	0.00%	100.00%
100.0	0.000	0.000	1.342	0.00%	100.00%
105.0	0.000	0.000	1.342	0.00%	100.00%
110.0	0.000	0.000	1.342	0.00%	100.00%
115.0	0.000	0.000	1.342	0.00%	100.00%
120.0	0.000	0.000	1.342	0.00%	100.00%
125.0	0.000	0.000	1.342	0.00%	100.00%
130.0	0.000	0.000	1.342	0.00%	100.00%
135.0	0.000	0.000	1.342	0.00%	100.00%
140.0	0.000	0.000	1.342	0.00%	100.00%
145.0	0.000	0.000	1.342	0.00%	100.00%
150.0	0.000	0.000	1.342	0.00%	100.00%
155.0	0.000	0.000	1.342	0.00%	100.00%
160.0	0.000	0.000	1.342	0.00%	100.00%
165.0	0.000	0.000	1.342	0.00%	100.00%
170.0	0.000	0.000	1.342	0.00%	100.00%
175.0	0.000	0.000	1.342	0.00%	100.00%
180.0	0.000	0.000	1.342	0.00%	100.00%

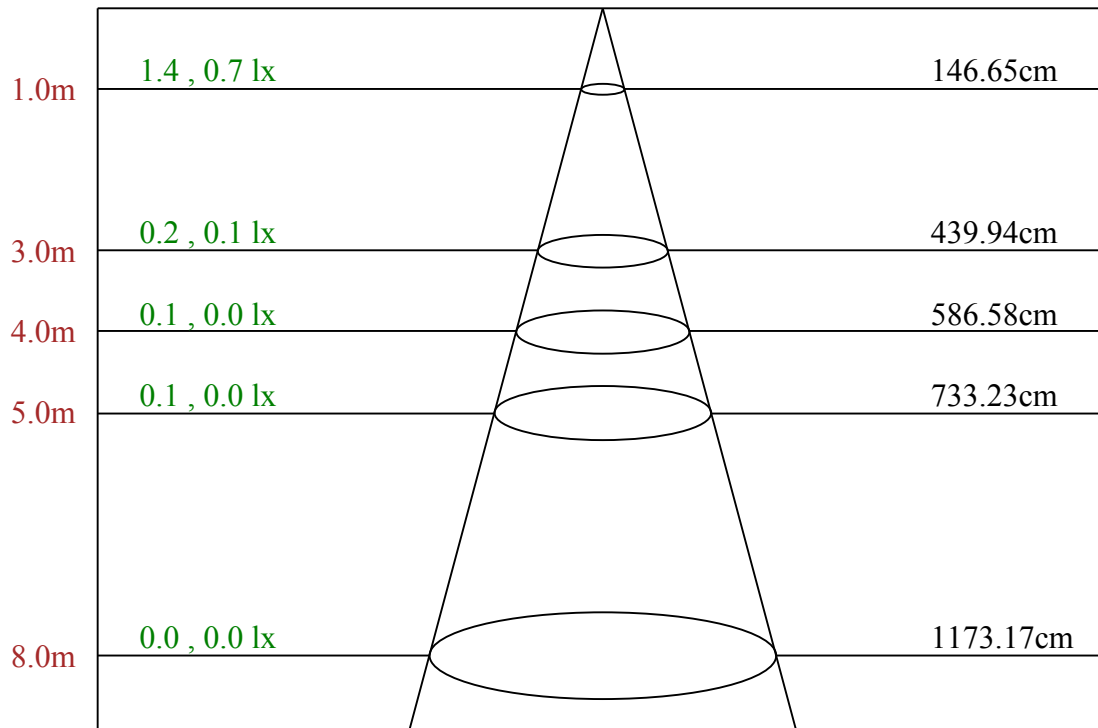
ZONAL LUMEN SUMMARY

Zone	Lumens	%Lamp	%Fixt
0-30	0.87	N.A.	64.90%
0-40	1.23	N.A.	91.36%
0-60	1.34	N.A.	100.00%
0-90	1.34	N.A.	100.00%
0-120	1.34	N.A.	100.00%
0-180	1.34	N.A.	100.00%
60-90	0.00	N.A.	0.00%
90-120	0.00	N.A.	0.00%
90-130	0.00	N.A.	0.00%
90-150	0.00	N.A.	0.00%
90-180	0.00	N.A.	0.00%
0-35.03	1.07	N.A.	80.00%

ZONAL LUMEN SUMMARY

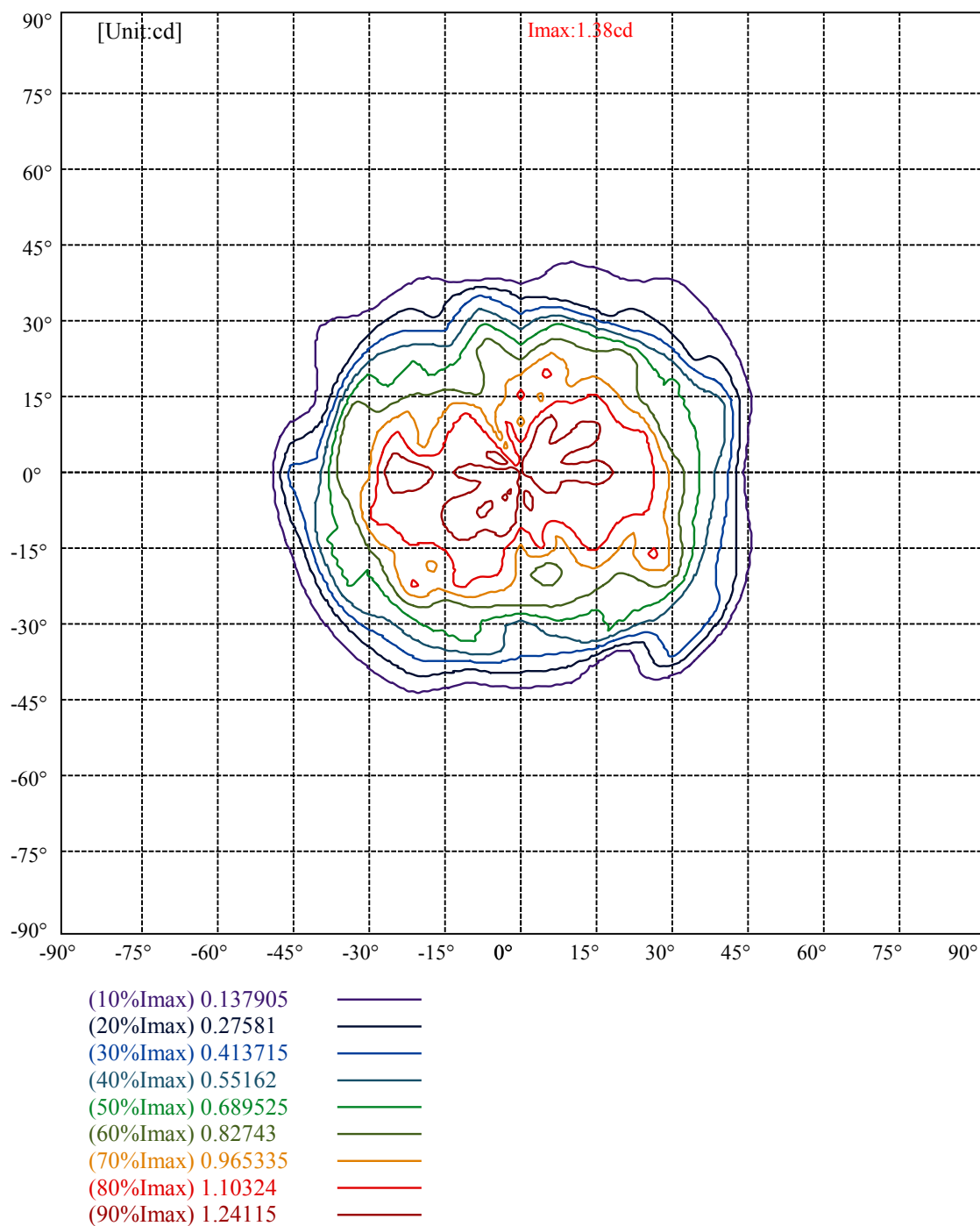
0-10	0.12
10-20	0.32
20-30	0.43
30-40	0.36
40-50	0.12
50-60	0.00
60-70	0.00
70-80	0.00
80-90	0.00
90-100	0.00
100-110	0.00
110-120	0.00
120-130	0.00
130-140	0.00
140-150	0.00
150-160	0.00
160-170	0.00
170-180	0.00

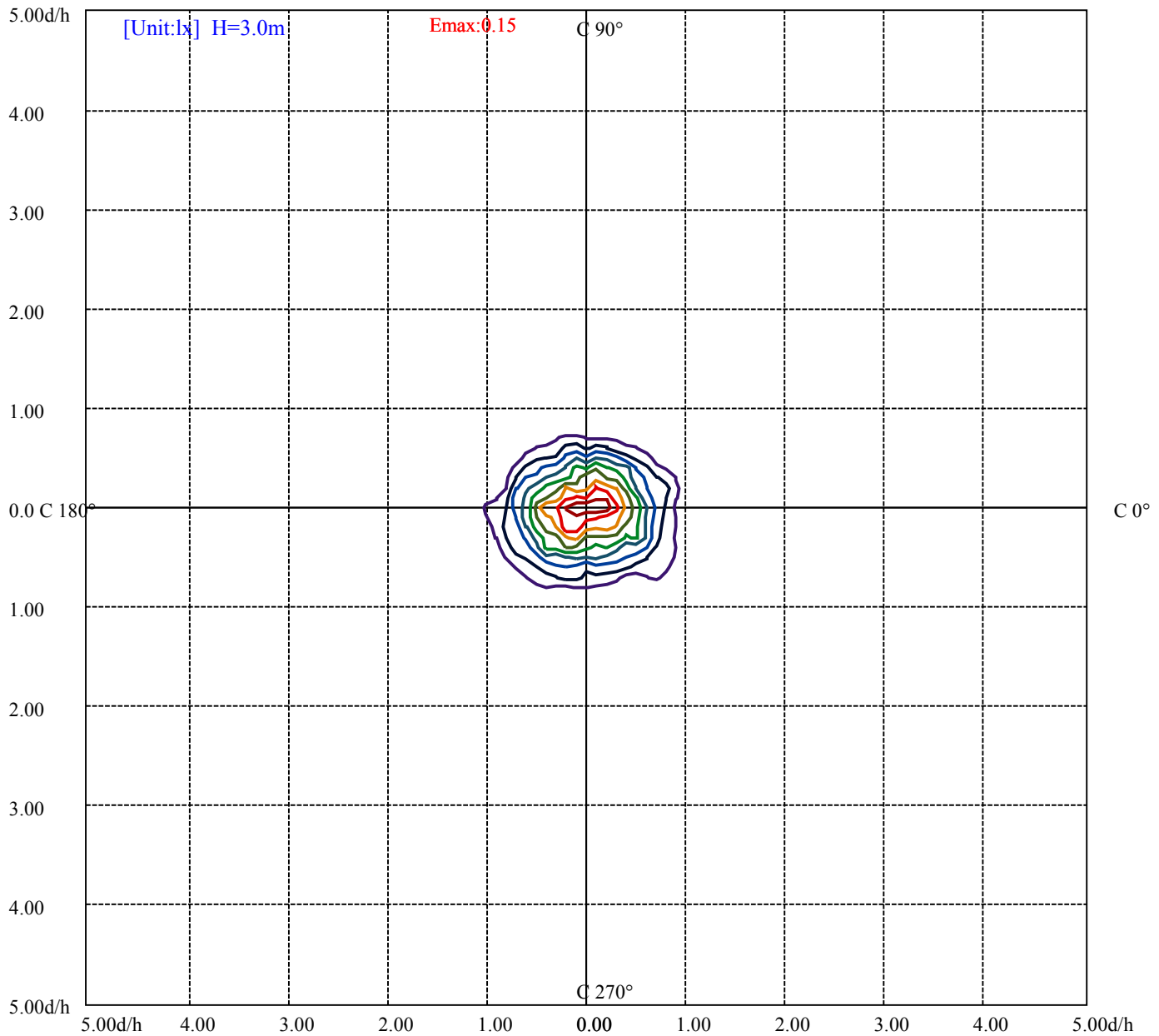




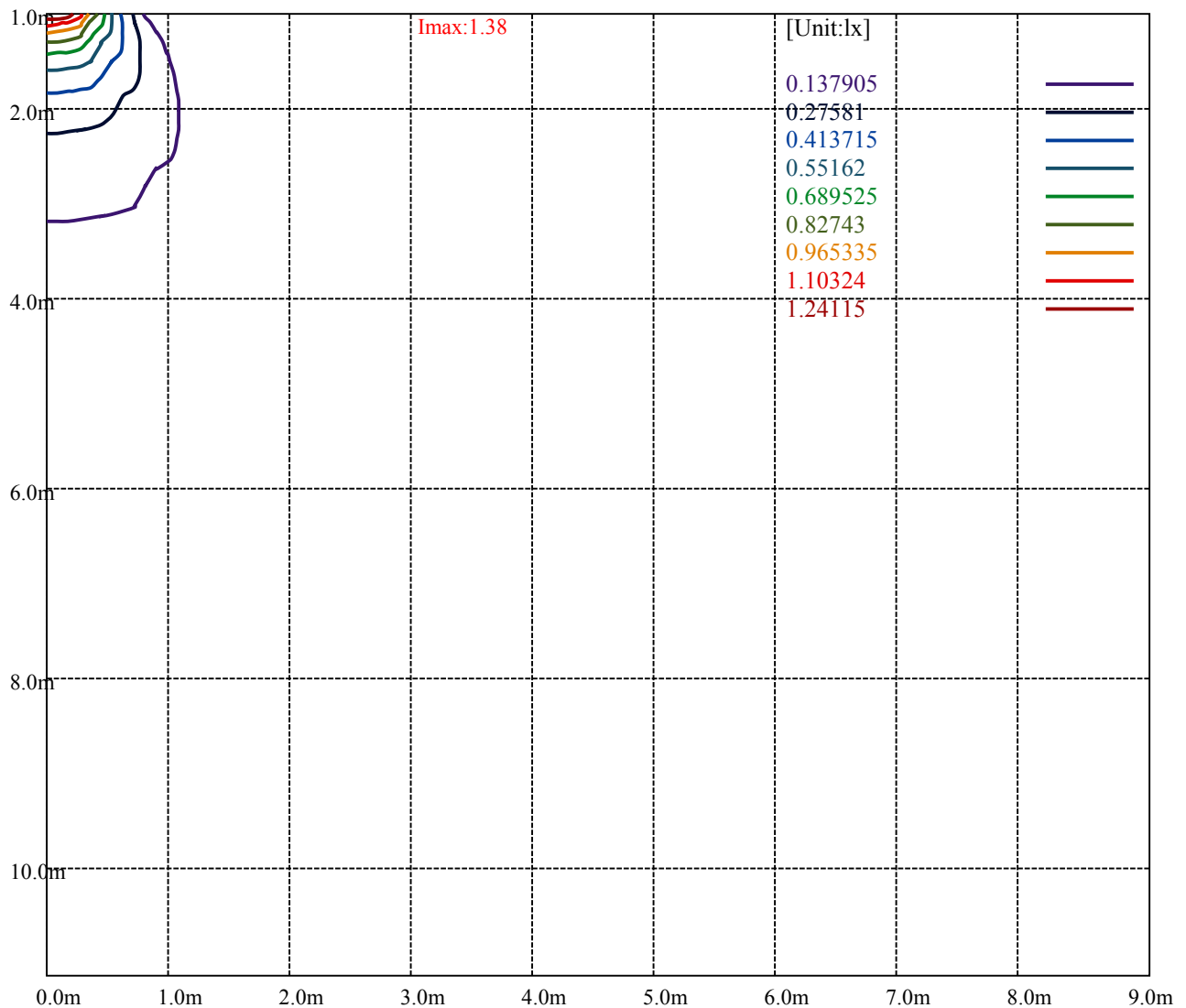
Max , Ave

Beam angle of C0 plane 72.50





(10%Emax)	0.01532278	—
(20%Emax)	0.03064556	—
(30%Emax)	0.04596834	—
(40%Emax)	0.06129111	—
(50%Emax)	0.07661389	—
(60%Emax)	0.09193667	—
(70%Emax)	0.1072594	—
(80%Emax)	0.1225822	—
(90%Emax)	0.1379056	—



Luminance Table

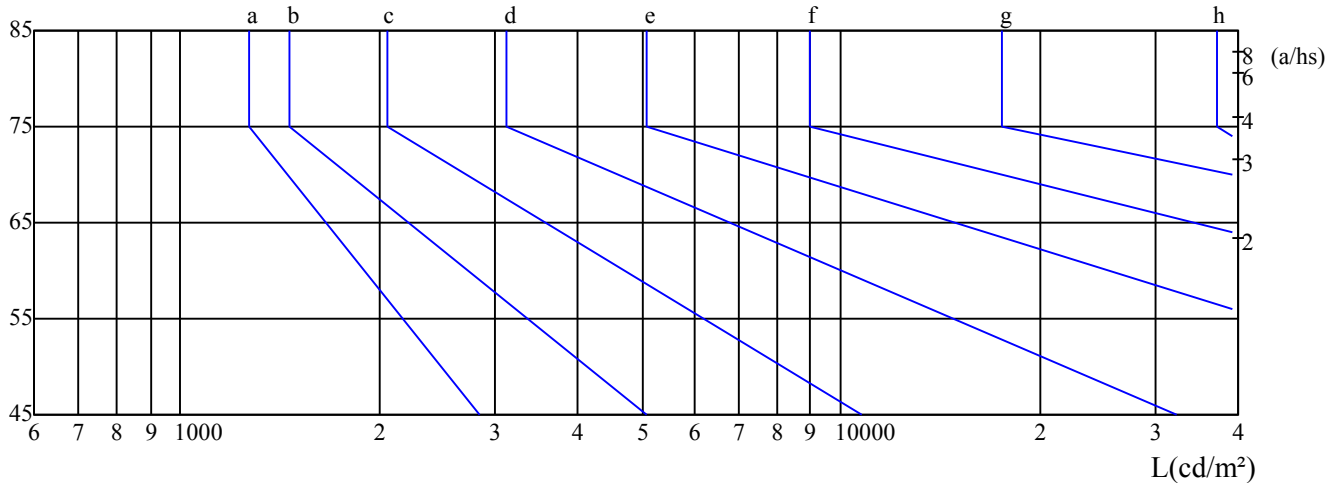
γ	45	50	55	60	65	70	75	80	85
C0	0	0	0	0	0	0	0	0	0
C45	3	0	0	0	0	0	0	0	0
C90	0	0	0	0	0	0	0	0	0

L(Hor)(65)	L(Ver)(65)	L45(65)	L(Hor)(75)	L(Ver)(75)	L45(75)	L(Hor)(85)	L(Ver)(85)	L45(85)
0	0	0	0	0	0	0	0	0

Glare Table

Glare	Quality	Service Values Illuminance(lx)							
1.15	A	2000	1000	500	≤ 300				
1.5	B		2000	1000	500	≤ 300			
1.85	C			2000	1000	500	≤ 300		
2.2	D				2000	1000	500	≤ 300	
2.55	E					2000	1000	500	≤ 300
		a	b	c	d	e	f	g	h

Luminance Limiting Curve

 $\gamma(^{\circ})$ 

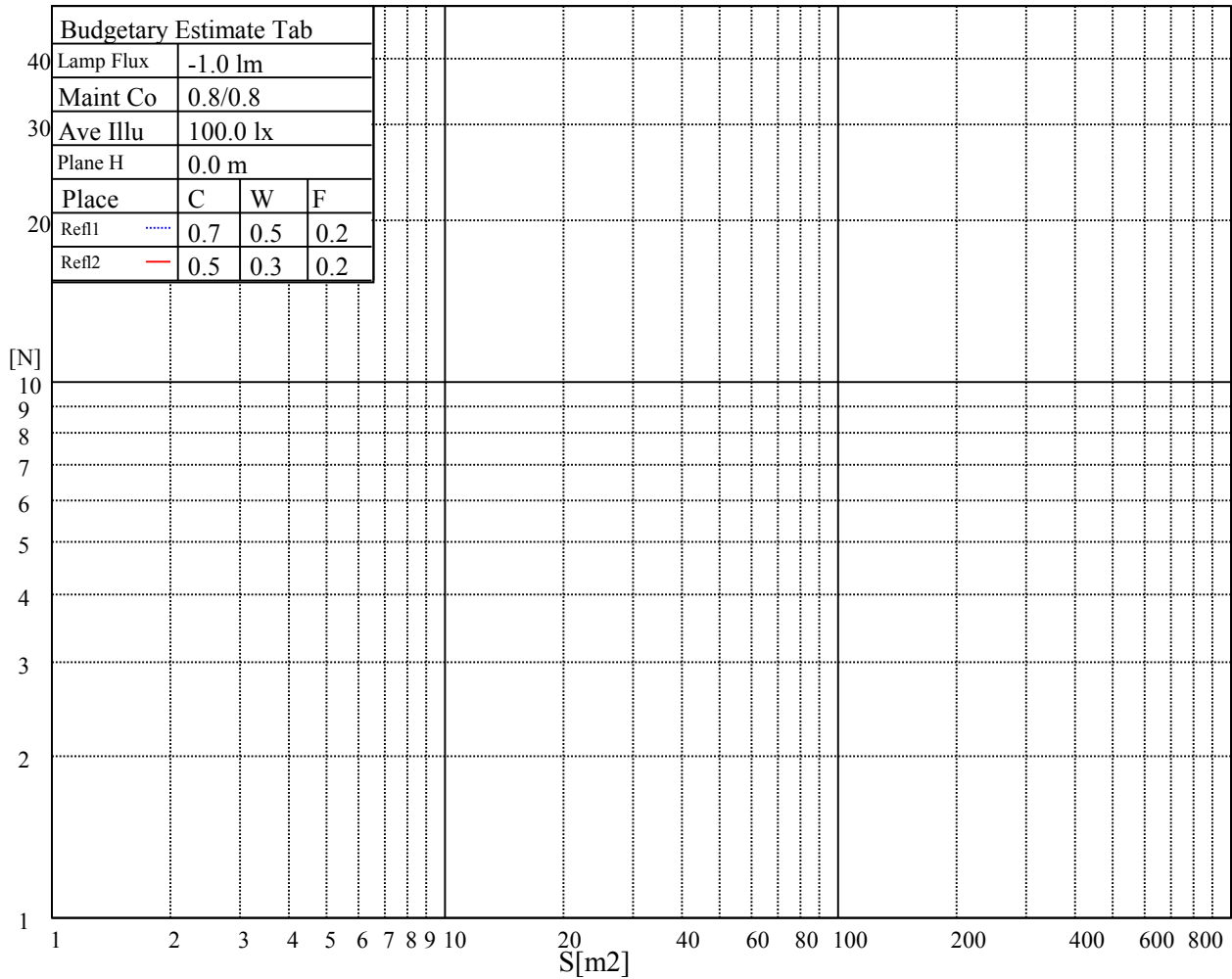
C0 ———

C45 ———

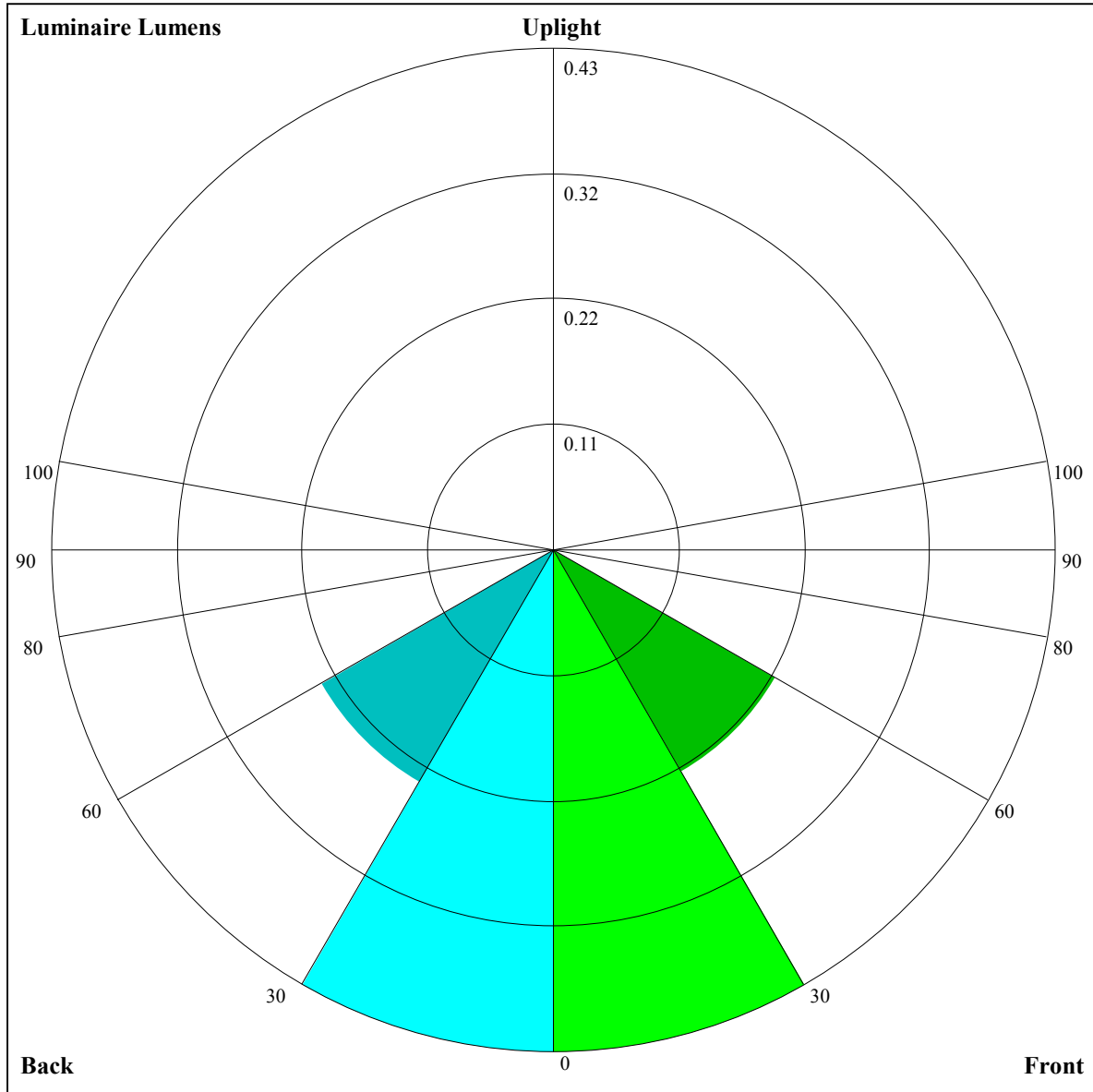
C90 ———

Illumination assessment according UGR											
Rf of Ceiling	70	70	50	50	30	70	70	50	50	30	
Rf of Wall	50	30	50	30	30	50	30	50	30	30	
Rf of Floor	20	20	20	20	20	20	20	20	20	20	
Room dimensions		Viewed crosswise					Viewed endwise				
X	Y										
2H	2H	-12.12	-11.13	-11.76	-10.82	-10.50	-17.14	-16.15	-16.78	-15.84	-15.53
	3H	-12.32	-11.45	-11.94	-11.11	-10.77	-17.35	-16.47	-16.96	-16.13	-15.79
	4H	-12.43	-11.62	-12.03	-11.27	-10.90	-17.45	-16.64	-17.05	-16.29	-15.92
	6H	-12.52	-11.78	-12.10	-11.40	-11.00	-17.54	-16.80	-17.12	-16.43	-16.03
	8H	-12.59	-11.89	-12.17	-11.50	-11.10	-17.62	-16.91	-17.19	-16.53	-16.12
	12H	-12.66	-12.00	-12.24	-11.60	-11.19	-17.69	-17.02	-17.26	-16.63	-16.21
4H	2H	-12.43	-11.62	-12.03	-11.27	-10.90	-17.45	-16.64	-17.05	-16.29	-15.92
	3H	-12.67	-12.00	-12.24	-11.61	-11.19	-17.69	-17.02	-17.27	-16.63	-16.21
	4H	-12.75	-12.17	-12.31	-11.75	-11.30	-17.77	-17.20	-17.33	-16.77	-16.32
	6H	-12.89	-12.39	-12.42	-11.93	-11.48	-17.92	-17.41	-17.44	-16.96	-16.50
	8H	-12.95	-12.48	-12.47	-12.03	-11.55	-17.98	-17.51	-17.49	-17.05	-16.57
	12H	-13.01	-12.58	-12.52	-12.12	-11.60	-18.03	-17.60	-17.54	-17.15	-16.63
8H	4H	-12.95	-12.48	-12.47	-12.03	-11.55	-17.98	-17.51	-17.49	-17.05	-16.57
	6H	-13.12	-12.73	-12.61	-12.25	-11.74	-18.14	-17.75	-17.63	-17.27	-16.76
	8H	-13.14	-12.81	-12.60	-12.29	-11.79	-18.16	-17.84	-17.63	-17.31	-16.82
	12H	-13.20	-12.94	-12.65	-12.43	-11.90	-18.22	-17.97	-17.68	-17.45	-16.93
12H	4H	-13.01	-12.58	-12.52	-12.12	-11.60	-18.03	-17.60	-17.54	-17.15	-16.63
	6H	-13.14	-12.81	-12.60	-12.29	-11.79	-18.16	-17.84	-17.63	-17.31	-16.82
	8H	-13.20	-12.94	-12.65	-12.43	-11.90	-18.22	-17.97	-17.68	-17.45	-16.93
Variation with the observer position at spacings:											
S = 1.0H		5.3/负无穷大					3.2/负无穷大				
S = 1.5H		7.9/负无穷大					6.0/负无穷大				
S = 2.0H		9.9/负无穷大					8.0/负无穷大				
Standard tables:		BK0					BK0				
Uncorrected UGR		-36.3					-31.3				

UGR calculation is based on CIE Publ. 117 ,S/H = 0.25



RHOCC	80			70			50			30			10			0
RHOW	50	30	10	50	30	10	50	30	10	50	30	10	50	30	10	0
RCR	COEFFICIENTS OF UTILIZATION RHOFC=20 CU															
0	0.00	0.00	0.00	0.00	0.00	0.00	0.00	0.00	0.00	0.00	0.00	0.00	0.00	0.00	0.00	0.00
1	0.00	0.00	0.00	0.00	0.00	0.00	0.00	0.00	0.00	0.00	0.00	0.00	0.00	0.00	0.00	0.00
2	0.00	0.00	0.00	0.00	0.00	0.00	0.00	0.00	0.00	0.00	0.00	0.00	0.00	0.00	0.00	0.00
3	0.00	0.00	0.00	0.00	0.00	0.00	0.00	0.00	0.00	0.00	0.00	0.00	0.00	0.00	0.00	0.00
4	0.00	0.00	0.00	0.00	0.00	0.00	0.00	0.00	0.00	0.00	0.00	0.00	0.00	0.00	0.00	0.00
5	0.00	0.00	0.00	0.00	0.00	0.00	0.00	0.00	0.00	0.00	0.00	0.00	0.00	0.00	0.00	0.00
6	0.00	0.00	0.00	0.00	0.00	0.00	0.00	0.00	0.00	0.00	0.00	0.00	0.00	0.00	0.00	0.00
7	0.00	0.00	0.00	0.00	0.00	0.00	0.00	0.00	0.00	0.00	0.00	0.00	0.00	0.00	0.00	0.00
8	0.00	0.00	0.00	0.00	0.00	0.00	0.00	0.00	0.00	0.00	0.00	0.00	0.00	0.00	0.00	0.00
9	0.00	0.00	0.00	0.00	0.00	0.00	0.00	0.00	0.00	0.00	0.00	0.00	0.00	0.00	0.00	0.00
10	0.00	0.00	0.00	0.00	0.00	0.00	0.00	0.00	0.00	0.00	0.00	0.00	0.00	0.00	0.00	0.00



Luminaire Lumens:

FL=0.43,FM=0.22,FH=0,FVH=0

BL=0.43,BM=0.23,BH=0,BVH=0

UL=0,UH=0

BUG Rating:B0-U0-G0

OML U500-DC24V-R

Intensity data(cd)										Appendix Page: 14 Total:16	
C/γ(°)	0.0	5.0	10.0	15.0	20.0	25.0	30.0	35.0	40.0		
0.0	1.38	1.38	1.38	1.38	1.15	1.15	0.92	0.69	0.46		
15.0	1.38	1.38	1.15	1.15	1.15	1.15	0.69	0.69	0.69		
30.0	1.38	1.38	1.38	1.38	1.15	0.92	0.69	0.69	0.23		
45.0	1.38	1.38	1.15	1.15	1.15	0.92	0.92	0.46	0.23		
60.0	1.38	1.38	1.38	1.15	0.92	0.92	0.69	0.23	0.23		
75.0	1.38	1.15	1.15	0.92	1.15	0.92	0.69	0.23	0.23		
90.0	1.15	1.15	0.92	1.15	0.92	0.69	0.46	0.23	0.00		
105.0	0.92	1.15	1.15	0.92	0.92	0.92	0.69	0.46	0.00		
120.0	1.15	0.92	0.92	0.92	0.69	0.69	0.46	0.23	0.23		
135.0	1.15	1.15	1.15	1.15	0.92	0.69	0.69	0.46	0.23		
150.0	1.15	1.38	1.15	1.15	0.92	0.92	0.69	0.69	0.23		
165.0	1.15	1.15	1.15	1.15	0.92	1.15	0.92	0.92	0.23		
180.0	1.38	1.38	1.38	1.15	1.38	1.38	0.92	0.92	0.46		
195.0	1.38	1.38	1.15	1.15	1.15	1.15	1.15	0.69	0.69		
210.0	1.38	1.38	1.38	1.38	1.15	1.15	0.92	0.69	0.69		
225.0	1.38	1.38	1.15	1.38	1.15	0.92	1.15	0.69	0.46		
240.0	1.38	1.15	1.38	1.15	1.15	1.15	0.69	0.69	0.46		
255.0	1.38	1.38	1.38	1.15	1.15	0.92	0.69	0.69	0.23		
270.0	1.15	1.15	1.15	0.92	0.92	0.92	0.46	0.46	0.23		
285.0	0.92	1.38	1.15	1.15	0.69	0.92	0.69	0.46	0.23		
300.0	1.15	1.15	1.15	0.92	0.92	0.92	0.69	0.69	0.00		
315.0	1.15	1.15	1.15	1.15	1.15	0.92	0.69	0.69	0.46		
330.0	1.15	1.38	1.15	1.15	1.15	0.92	1.15	0.92	0.46		
345.0	1.15	1.38	1.15	1.15	1.15	1.15	0.92	0.69	0.46		
360.0	1.38	1.38	1.38	1.38	1.15	1.15	0.92	0.69	0.46		
C/γ(°)	45.0	50.0	55.0	60.0	65.0	70.0	75.0	80.0	85.0		
0.0	0.00	0.00	0.00	0.00	0.00	0.00	0.00	0.00	0.00		
15.0	0.23	0.00	0.00	0.00	0.00	0.00	0.00	0.00	0.00		
30.0	0.23	0.00	0.00	0.00	0.00	0.00	0.00	0.00	0.00		
45.0	0.23	0.00	0.00	0.00	0.00	0.00	0.00	0.00	0.00		
60.0	0.00	0.00	0.00	0.00	0.00	0.00	0.00	0.00	0.00		
75.0	0.00	0.00	0.00	0.00	0.00	0.00	0.00	0.00	0.00		
90.0	0.00	0.00	0.00	0.00	0.00	0.00	0.00	0.00	0.00		
105.0	0.00	0.00	0.00	0.00	0.00	0.00	0.00	0.00	0.00		
120.0	0.00	0.00	0.00	0.00	0.00	0.00	0.00	0.00	0.00		
135.0	0.00	0.00	0.00	0.00	0.00	0.00	0.00	0.00	0.00		
150.0	0.23	0.00	0.00	0.00	0.00	0.00	0.00	0.00	0.00		
165.0	0.00	0.00	0.00	0.00	0.00	0.00	0.00	0.00	0.00		
180.0	0.46	0.00	0.00	0.00	0.00	0.00	0.00	0.00	0.00		
195.0	0.23	0.00	0.00	0.00	0.00	0.00	0.00	0.00	0.00		
210.0	0.23	0.00	0.00	0.00	0.00	0.00	0.00	0.00	0.00		
225.0	0.23	0.00	0.00	0.00	0.00	0.00	0.00	0.00	0.00		
240.0	0.23	0.00	0.00	0.00	0.00	0.00	0.00	0.00	0.00		
255.0	0.00	0.00	0.00	0.00	0.00	0.00	0.00	0.00	0.00		
270.0	0.00	0.00	0.00	0.00	0.00	0.00	0.00	0.00	0.00		
285.0	0.00	0.00	0.00	0.00	0.00	0.00	0.00	0.00	0.00		
300.0	0.00	0.00	0.00	0.00	0.00	0.00	0.00	0.00	0.00		
315.0	0.46	0.00	0.00	0.00	0.00	0.00	0.00	0.00	0.00		
330.0	0.46	0.00	0.00	0.00	0.00	0.00	0.00	0.00	0.00		
345.0	0.23	0.00	0.00	0.00	0.00	0.00	0.00	0.00	0.00		
360.0	0.00	0.00	0.00	0.00	0.00	0.00	0.00	0.00	0.00		

OML U500-DC24V-R

Intensity data(cd)										Appendix Page: 15 Total:16	
C/γ(°)	90.0	95.0	100.0	105.0	110.0	115.0	120.0	125.0	130.0		
0.0	0.00	0.00	0.00	0.00	0.00	0.00	0.00	0.00	0.00		
15.0	0.00	0.00	0.00	0.00	0.00	0.00	0.00	0.00	0.00		
30.0	0.00	0.00	0.00	0.00	0.00	0.00	0.00	0.00	0.00		
45.0	0.00	0.00	0.00	0.00	0.00	0.00	0.00	0.00	0.00		
60.0	0.00	0.00	0.00	0.00	0.00	0.00	0.00	0.00	0.00		
75.0	0.00	0.00	0.00	0.00	0.00	0.00	0.00	0.00	0.00		
90.0	0.00	0.00	0.00	0.00	0.00	0.00	0.00	0.00	0.00		
105.0	0.00	0.00	0.00	0.00	0.00	0.00	0.00	0.00	0.00		
120.0	0.00	0.00	0.00	0.00	0.00	0.00	0.00	0.00	0.00		
135.0	0.00	0.00	0.00	0.00	0.00	0.00	0.00	0.00	0.00		
150.0	0.00	0.00	0.00	0.00	0.00	0.00	0.00	0.00	0.00		
165.0	0.00	0.00	0.00	0.00	0.00	0.00	0.00	0.00	0.00		
180.0	0.00	0.00	0.00	0.00	0.00	0.00	0.00	0.00	0.00		
195.0	0.00	0.00	0.00	0.00	0.00	0.00	0.00	0.00	0.00		
210.0	0.00	0.00	0.00	0.00	0.00	0.00	0.00	0.00	0.00		
225.0	0.00	0.00	0.00	0.00	0.00	0.00	0.00	0.00	0.00		
240.0	0.00	0.00	0.00	0.00	0.00	0.00	0.00	0.00	0.00		
255.0	0.00	0.00	0.00	0.00	0.00	0.00	0.00	0.00	0.00		
270.0	0.00	0.00	0.00	0.00	0.00	0.00	0.00	0.00	0.00		
285.0	0.00	0.00	0.00	0.00	0.00	0.00	0.00	0.00	0.00		
300.0	0.00	0.00	0.00	0.00	0.00	0.00	0.00	0.00	0.00		
315.0	0.00	0.00	0.00	0.00	0.00	0.00	0.00	0.00	0.00		
330.0	0.00	0.00	0.00	0.00	0.00	0.00	0.00	0.00	0.00		
345.0	0.00	0.00	0.00	0.00	0.00	0.00	0.00	0.00	0.00		
360.0	0.00	0.00	0.00	0.00	0.00	0.00	0.00	0.00	0.00		
C/γ(°)	135.0	140.0	145.0	150.0	155.0	160.0	165.0	170.0	175.0		
0.0	0.00	0.00	0.00	0.00	0.00	0.00	0.00	0.00	0.00		
15.0	0.00	0.00	0.00	0.00	0.00	0.00	0.00	0.00	0.00		
30.0	0.00	0.00	0.00	0.00	0.00	0.00	0.00	0.00	0.00		
45.0	0.00	0.00	0.00	0.00	0.00	0.00	0.00	0.00	0.00		
60.0	0.00	0.00	0.00	0.00	0.00	0.00	0.00	0.00	0.00		
75.0	0.00	0.00	0.00	0.00	0.00	0.00	0.00	0.00	0.00		
90.0	0.00	0.00	0.00	0.00	0.00	0.00	0.00	0.00	0.00		
105.0	0.00	0.00	0.00	0.00	0.00	0.00	0.00	0.00	0.00		
120.0	0.00	0.00	0.00	0.00	0.00	0.00	0.00	0.00	0.00		
135.0	0.00	0.00	0.00	0.00	0.00	0.00	0.00	0.00	0.00		
150.0	0.00	0.00	0.00	0.00	0.00	0.00	0.00	0.00	0.00		
165.0	0.00	0.00	0.00	0.00	0.00	0.00	0.00	0.00	0.00		
180.0	0.00	0.00	0.00	0.00	0.00	0.00	0.00	0.00	0.00		
195.0	0.00	0.00	0.00	0.00	0.00	0.00	0.00	0.00	0.00		
210.0	0.00	0.00	0.00	0.00	0.00	0.00	0.00	0.00	0.00		
225.0	0.00	0.00	0.00	0.00	0.00	0.00	0.00	0.00	0.00		
240.0	0.00	0.00	0.00	0.00	0.00	0.00	0.00	0.00	0.00		
255.0	0.00	0.00	0.00	0.00	0.00	0.00	0.00	0.00	0.00		
270.0	0.00	0.00	0.00	0.00	0.00	0.00	0.00	0.00	0.00		
285.0	0.00	0.00	0.00	0.00	0.00	0.00	0.00	0.00	0.00		
300.0	0.00	0.00	0.00	0.00	0.00	0.00	0.00	0.00	0.00		
315.0	0.00	0.00	0.00	0.00	0.00	0.00	0.00	0.00	0.00		
330.0	0.00	0.00	0.00	0.00	0.00	0.00	0.00	0.00	0.00		
345.0	0.00	0.00	0.00	0.00	0.00	0.00	0.00	0.00	0.00		
360.0	0.00	0.00	0.00	0.00	0.00	0.00	0.00	0.00	0.00		

Intensity data(cd)

C/ γ (°)	180.0
0.0	0.00
15.0	0.00
30.0	0.00
45.0	0.00
60.0	0.00
75.0	0.00
90.0	0.00
105.0	0.00
120.0	0.00
135.0	0.00
150.0	0.00
165.0	0.00
180.0	0.00
195.0	0.00
210.0	0.00
225.0	0.00
240.0	0.00
255.0	0.00
270.0	0.00
285.0	0.00
300.0	0.00
315.0	0.00
330.0	0.00
345.0	0.00
360.0	0.00