

LUMINAIRE PHOTOMETRIC TEST REPORT

Luminaire Property

Manufacturer: 0
Luminaire Type: 220V-2835-198L-3000K
Lamp Type:
Luminous Width: 0 mm
Luminous Length: 0 mm
Luminous Height: 0 mm

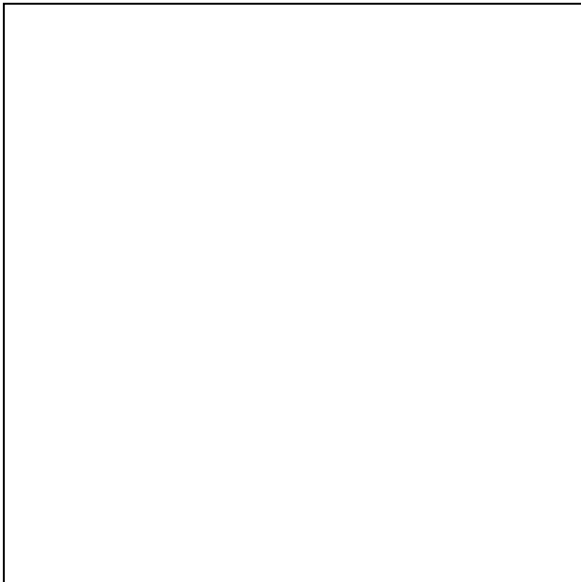
Voltage(V): 219.61 V
Current(A): 0.0550 A
Power(W): 11.32 W
Power Factor: 0.9270
Lamp Luminous Flux: 984.64

Photometric Results

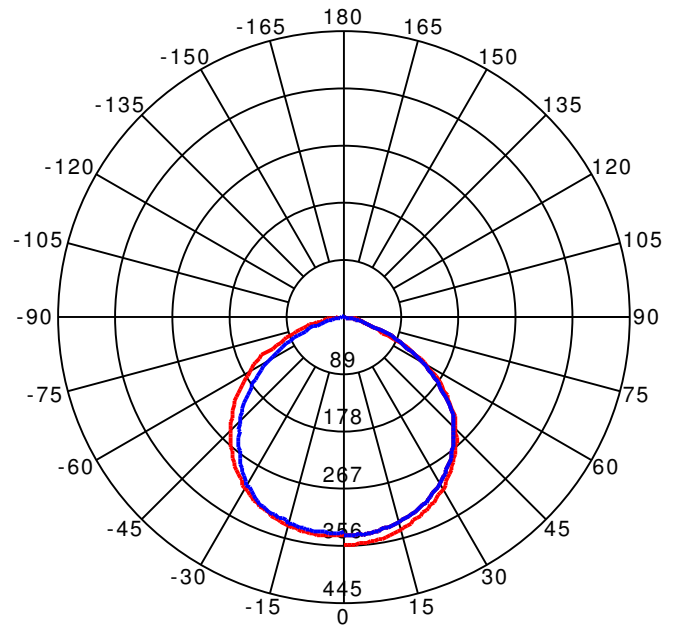
CIE Class: Direct
Luminaire Luminous Flux: 984.6432
Downward Ratio: 100.00%
Luminaire Efficacy Rating(LER): 86.98 lm/W
Beam Angle(50%) C0-180,C90-270: 114.7,108.4
Field Angle(10%) C0-180,C90-270: 154.4,148.6

Max. Intensity: 355.77 cd
Max.Intensity Angle: C=0 Gamma=1
Upward Ratio: 0.00%
Efficacy: 100.00%
Center Intensity: 354.27 cd

Picture of Luminaire



Luminous Intensity Distribution Curve



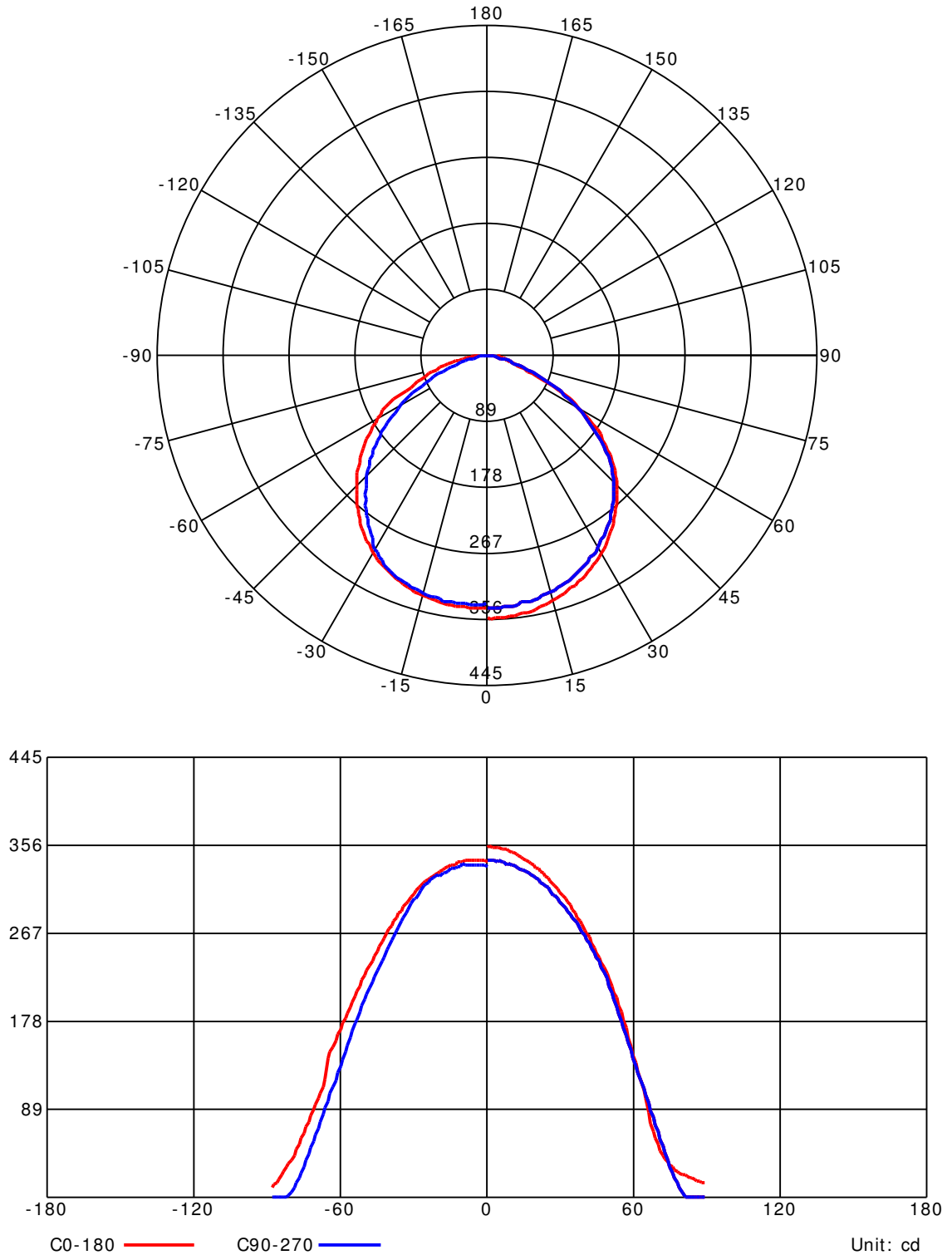
Beam Angle(50%) C0-180,C90-270: 108.4 deg

C0-180 — C90-270 —

C Range: 0 - 360 Deg
C Interval: 45.0 Deg
Test Speed: High
Temperature:
Operators:
Test Date: 2020/3/13 17:29:26

G Range: 0 - 90 Deg
G Interval: 1.0 Deg
Test System: Huipu CPM-1800B Goniophotometer
Humidity:
Test Distance: 6.35 m
Remarks:

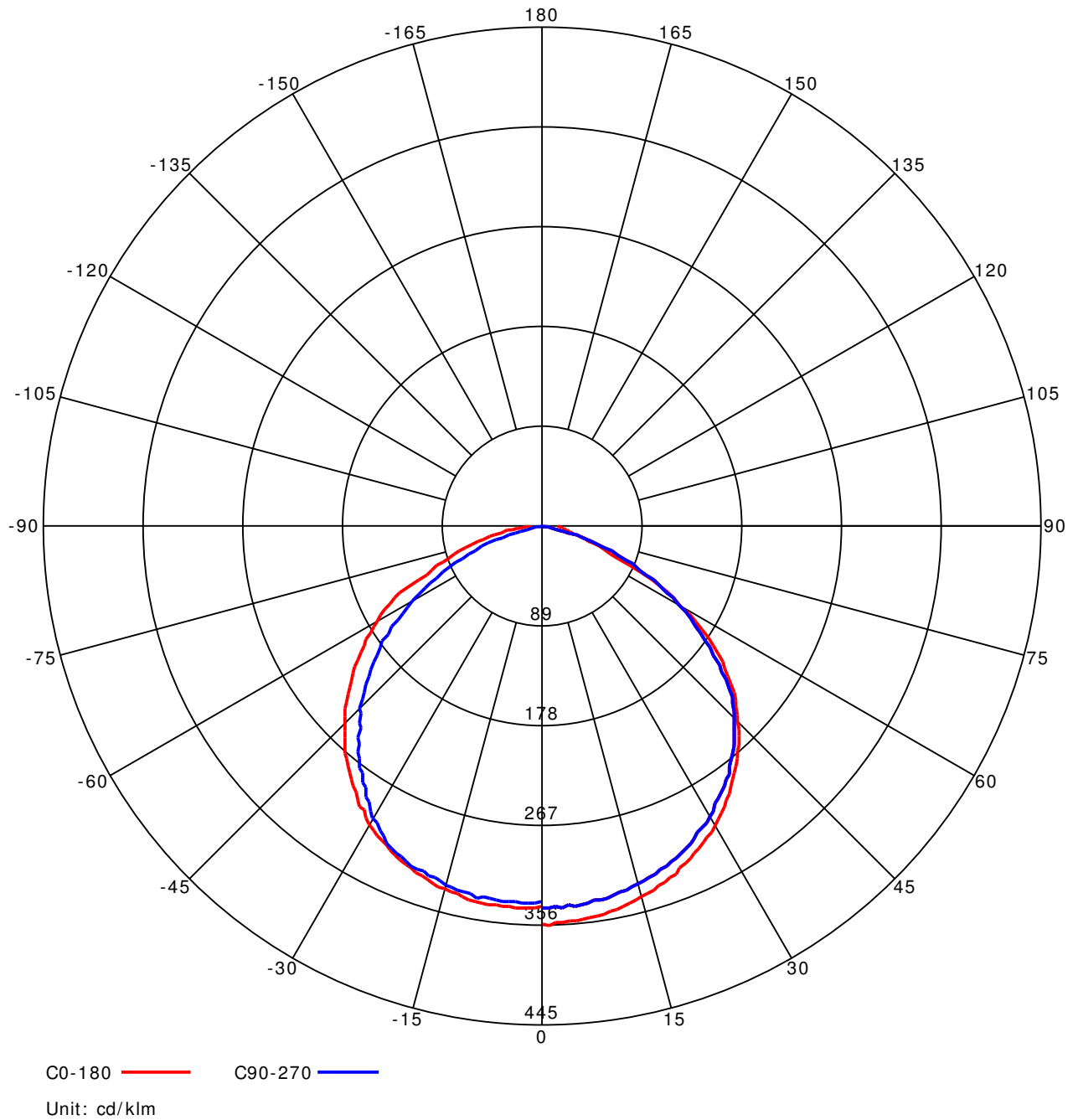
Luminous Intensity Distribution Curve



C Range: 0 - 360 Deg
C Interval: 45.0 Deg
Test Speed: High
Temperature:
Operators:
Test Date: 2020/3/13 17:29:26

G Range: 0 - 90 Deg
G Interval: 1.0 Deg
Test System: Huipu CPM-1800B Goniophotometer
Humidity:
Test Distance: 6.35 m
Remarks:

Luminous Intensity Distribution Curve



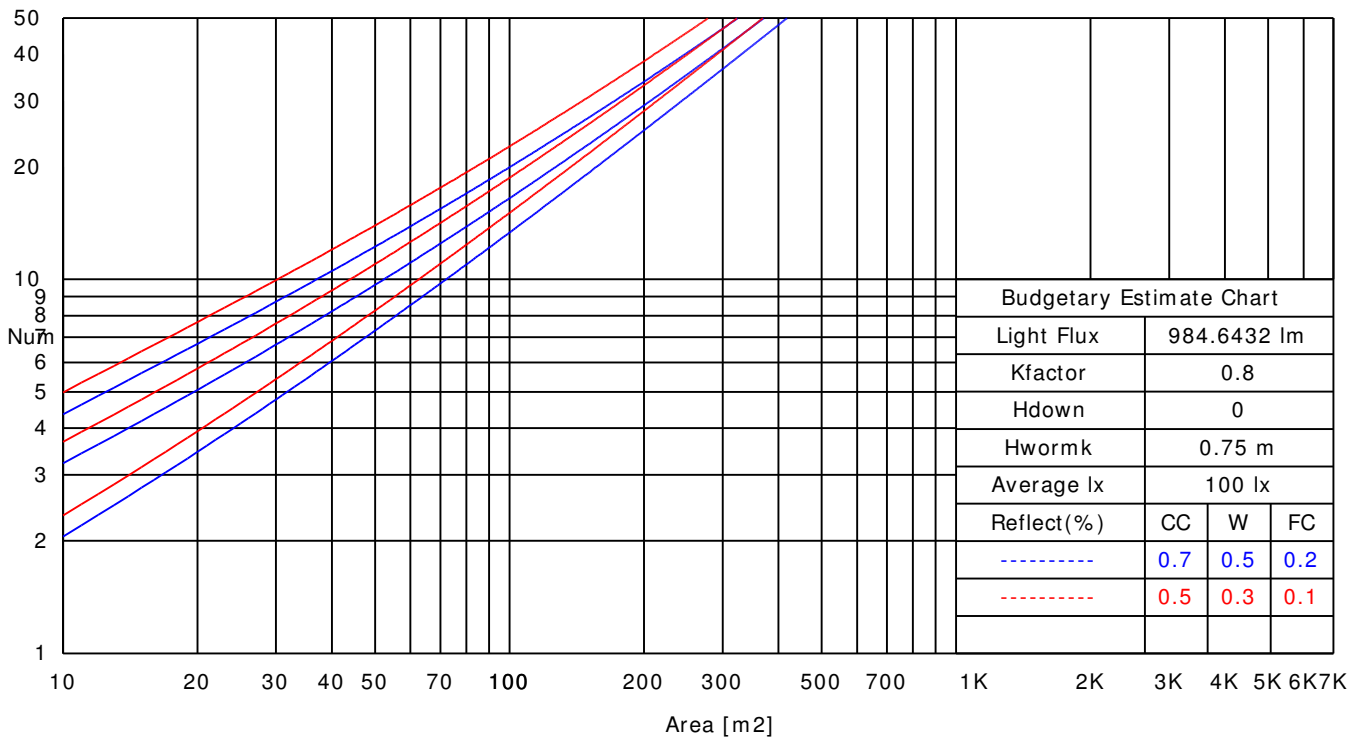
C Range: 0 - 360 Deg
C Interval: 45.0 Deg
Test Speed: High
Temperature:
Operators:
Test Date: 2020/3/13 17:29:26

G Range: 0 - 90 Deg
G Interval: 1.0 Deg
Test System: Huipu CPM-1800B Goniophotometer
Humidity:
Test Distance: 6.35 m
Remarks:

UTILIZATION FACTORS TABLE

RHOCC	80			70			50			30			10			0
RHOW	50	30	10	50	30	10	50	30	10	50	30	10	50	30	10	0
RCR	COEFFICIENTS OF UTILIZATION FOR RHOFC=20															
0	1.19	1.19	1.19	1.16	1.16	1.16	1.11	1.11	1.11	1.06	1.06	1.06	1.02	1.02	1.02	1.00
1	1.08	1.06	1.05	1.06	1.04	1.03	1.02	1.00	0.99	0.97	0.95	0.93	0.91	0.89	0.87	0.81
2	0.96	0.94	0.93	0.95	0.93	0.91	0.92	0.89	0.87	0.88	0.85	0.82	0.83	0.80	0.77	0.72
3	0.86	0.84	0.82	0.85	0.83	0.80	0.83	0.80	0.77	0.80	0.76	0.73	0.76	0.72	0.69	0.64
4	0.77	0.75	0.73	0.77	0.74	0.72	0.76	0.72	0.69	0.73	0.69	0.65	0.70	0.66	0.61	0.57
5	0.70	0.67	0.66	0.70	0.67	0.65	0.69	0.65	0.62	0.67	0.63	0.59	0.65	0.60	0.55	0.52
6	0.64	0.61	0.60	0.64	0.61	0.59	0.63	0.59	0.56	0.62	0.57	0.53	0.60	0.55	0.50	0.47
7	0.58	0.56	0.55	0.58	0.55	0.53	0.58	0.54	0.51	0.58	0.52	0.49	0.56	0.51	0.46	0.43
8	0.54	0.51	0.50	0.54	0.51	0.49	0.54	0.50	0.47	0.54	0.48	0.45	0.53	0.47	0.42	0.39
9	0.50	0.48	0.46	0.50	0.47	0.45	0.50	0.46	0.43	0.50	0.45	0.41	0.49	0.44	0.39	0.36
10	0.46	0.44	0.43	0.47	0.44	0.42	0.47	0.43	0.40	0.47	0.42	0.38	0.47	0.41	0.36	0.34

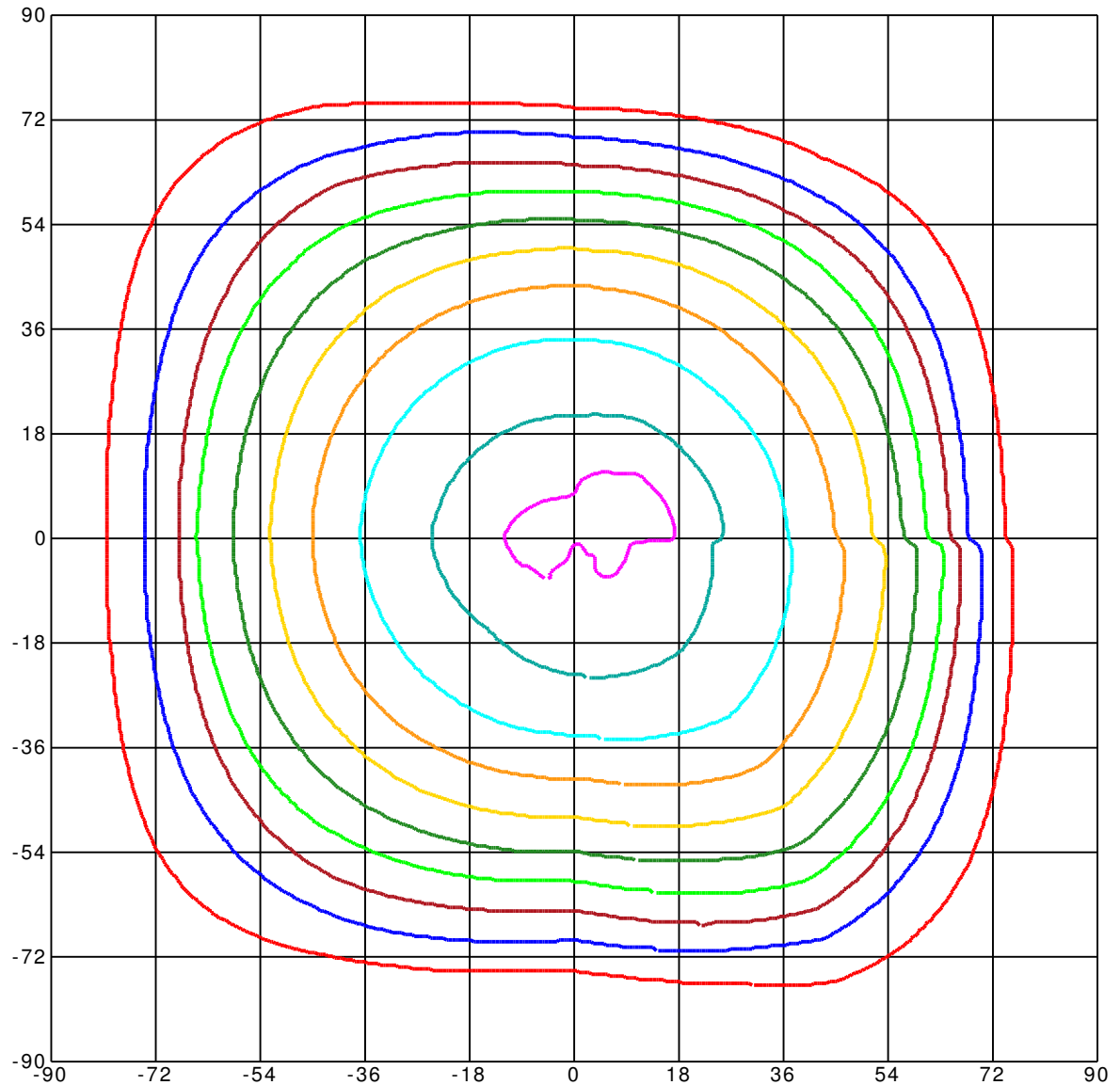
LUMINAIRE BUDGETARY ESTIMATE DIAGRAM



C Range: 0 - 360 Deg
 C Interval: 45.0 Deg
 Test Speed: High
 Temperature:
 Operators:
 Test Date: 2020/3/13 17:29:26

G Range: 0 - 90 Deg
 G Interval: 1.0 Deg
 Test System: Huipu CPM-1800B Goniophotometer
 Humidity:
 Test Distance: 6.35 m
 Remarks:

ISOCANDELA DIAGRAM (RECTANGULAR)



Unit of intensity:cd $I_{max}(100\%)$: 355.765 cd

337.977(95% I_{max})

320.189(90% I_{max})

284.612(80% I_{max})

249.036(70% I_{max})

213.459(60% I_{max})

177.883(50% I_{max})

142.306(40% I_{max})

106.73(30% I_{max})

71.153(20% I_{max})

35.577(10% I_{max})

C Range: 0 - 360 Deg

C Interval: 45.0 Deg

Test Speed: High

Temperature:

Operators:

Test Date: 2020/3/13 17:29:26

G Range: 0 - 90 Deg

G Interval: 1.0 Deg

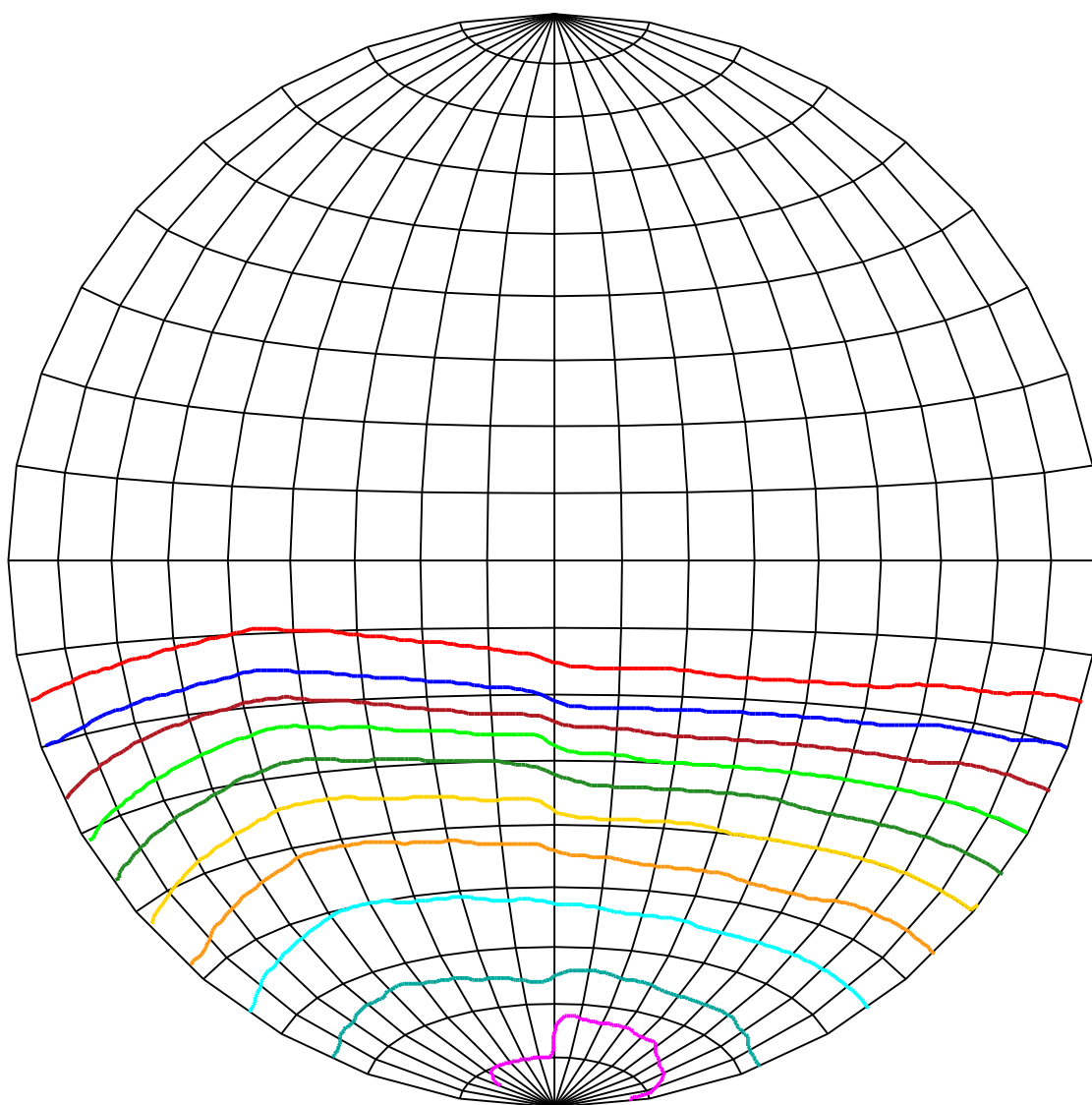
Test System: Huipu CPM-1800B Goniophotometer

Humidity:

Test Distance: 6.35 m

Remarks:

ISOCANDELA DIAGRAM (SPHERE)



Unit of intensity:cd $I_{max}(100\%)$: 355.765 cd

337.977(95% I_{max})
 320.189(90% I_{max})
 284.612(80% I_{max})
 249.036(70% I_{max})
 213.459(60% I_{max})

177.883(50% I_{max})
 142.306(40% I_{max})
 106.73(30% I_{max})
 71.153(20% I_{max})
 35.577(10% I_{max})

C Range: 0 - 360 Deg

C Interval: 45.0 Deg

Test Speed: High

Temperature:

Operators:

Test Date: 2020/3/13 17:29:26

G Range: 0 - 90 Deg

G Interval: 1.0 Deg

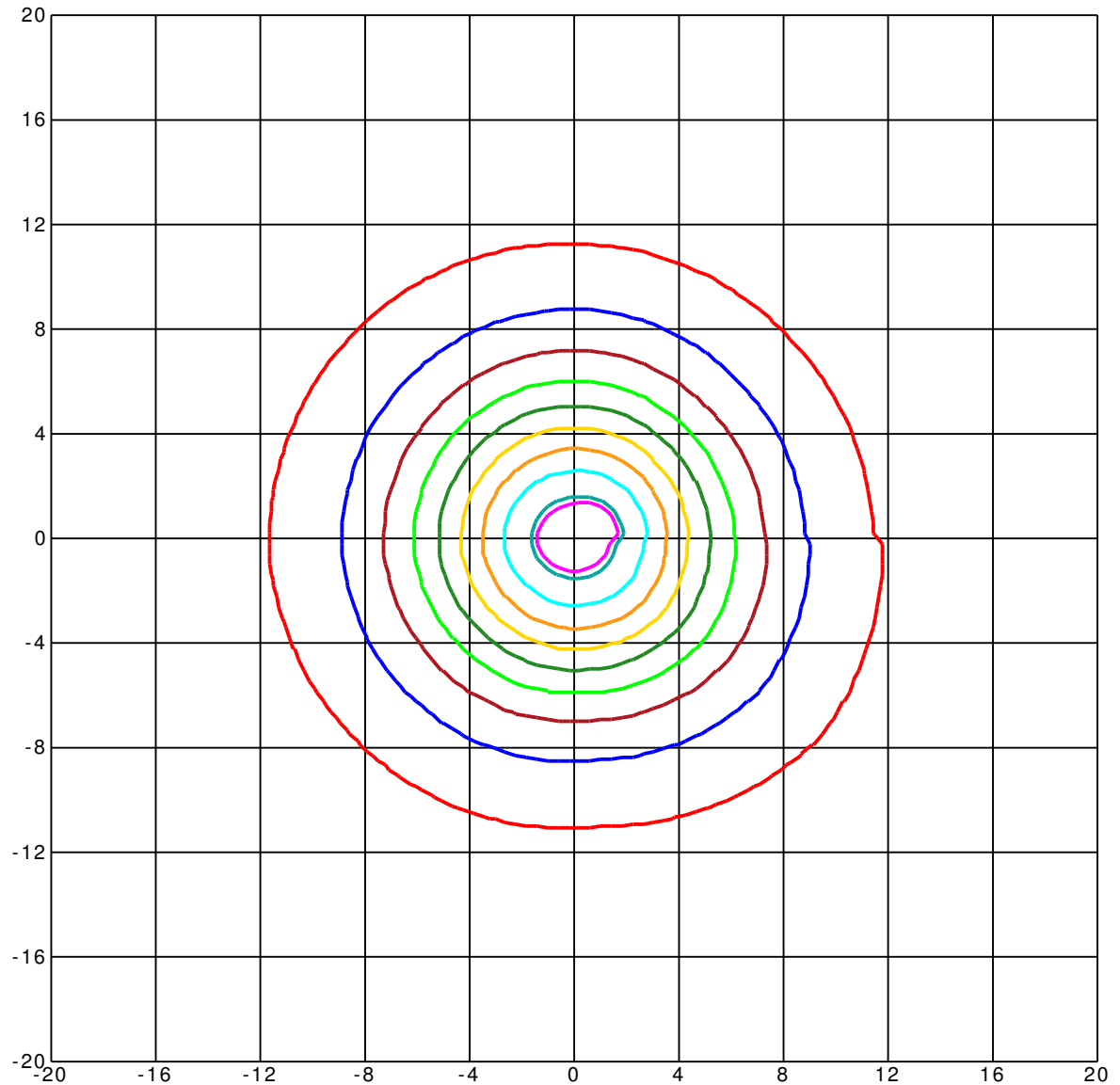
Test System: Huipu CPM-1800B Goniophotometer

Humidity:

Test Distance: 6.35 m

Remarks:

ISOLX DIAGRAM



Unit of illumination:lx

Height of plane:8.0(m)/26.25(ft)

5.112(1% Emax)

5.001(1% Emax)

4.445(1% Emax)

3.889(1% Emax)

3.334(1% Emax)

2.778(1% Emax)

2.223(1% Emax)

1.667(0% Emax)

1.111(0% Emax)

0.556(0% Emax)

C Range: 0 - 360 Deg

C Interval: 45.0 Deg

Test Speed: High

Temperature:

Operators:

Test Date: 2020/3/13 17:29:26

G Range: 0 - 90 Deg

G Interval: 1.0 Deg

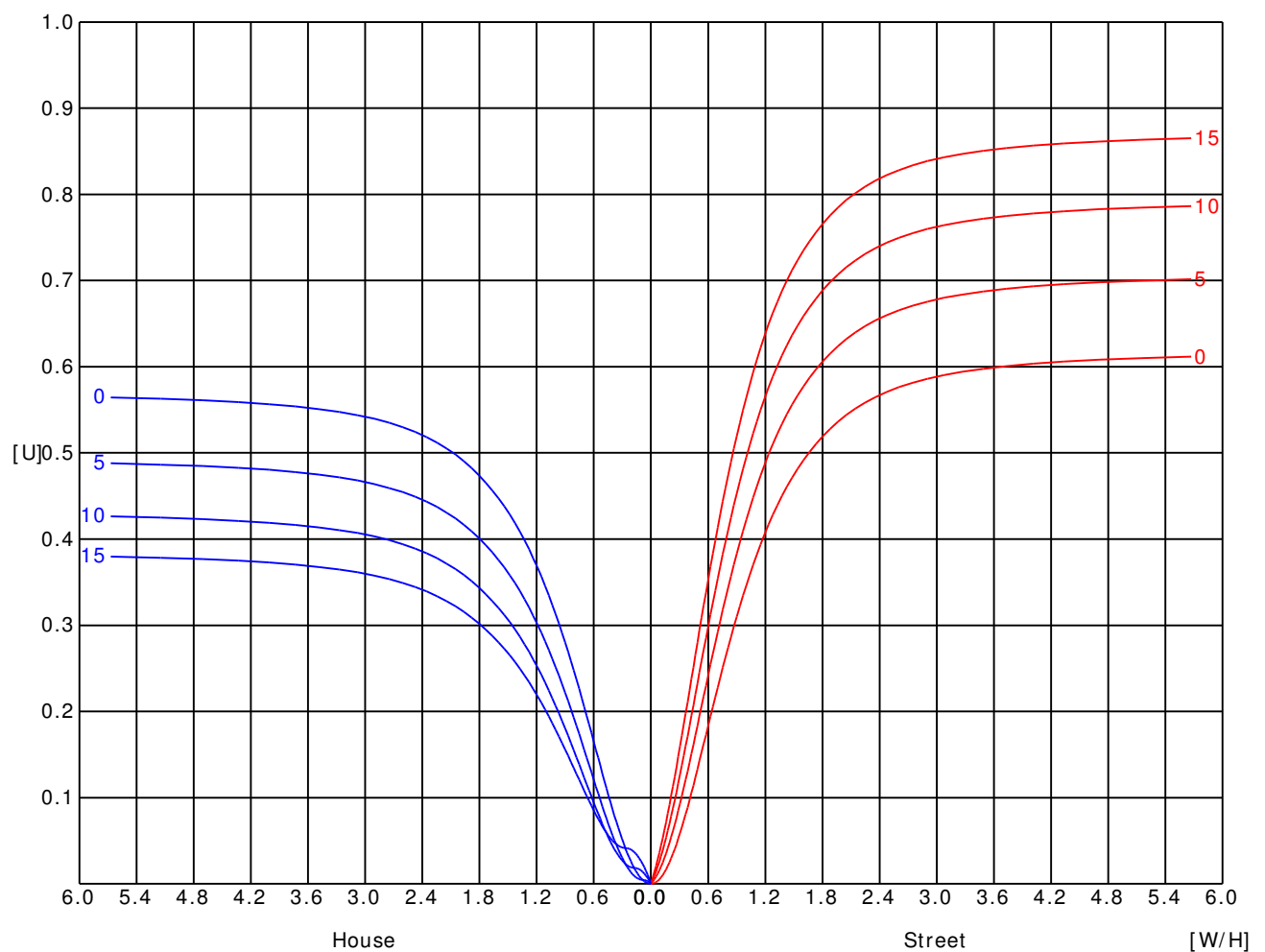
Test System: Huipu CPM-1800B Goniophotometer

Humidity:

Test Distance: 6.35 m

Remarks:

UTILIZATION FACTOR DIAGRAM (ROAD)

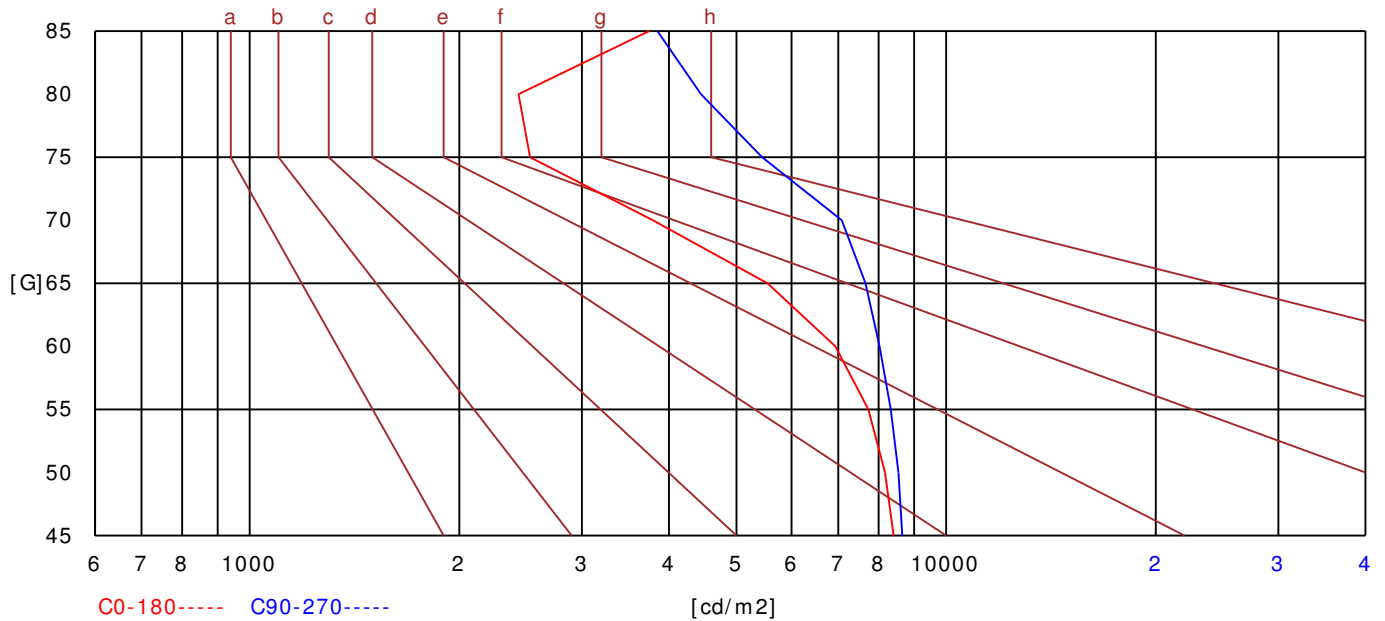


C Range: 0 - 360 Deg
 C Interval: 45.0 Deg
 Test Speed: High
 Temperature:
 Operators:
 Test Date: 2020/3/13 17:29:26

G Range: 0 - 90 Deg
 G Interval: 1.0 Deg
 Test System: Huipu CPM-1800B Goniophotometer
 Humidity:
 Test Distance: 6.35 m
 Remarks:

B R I G H T L I M I T D I A G R A M

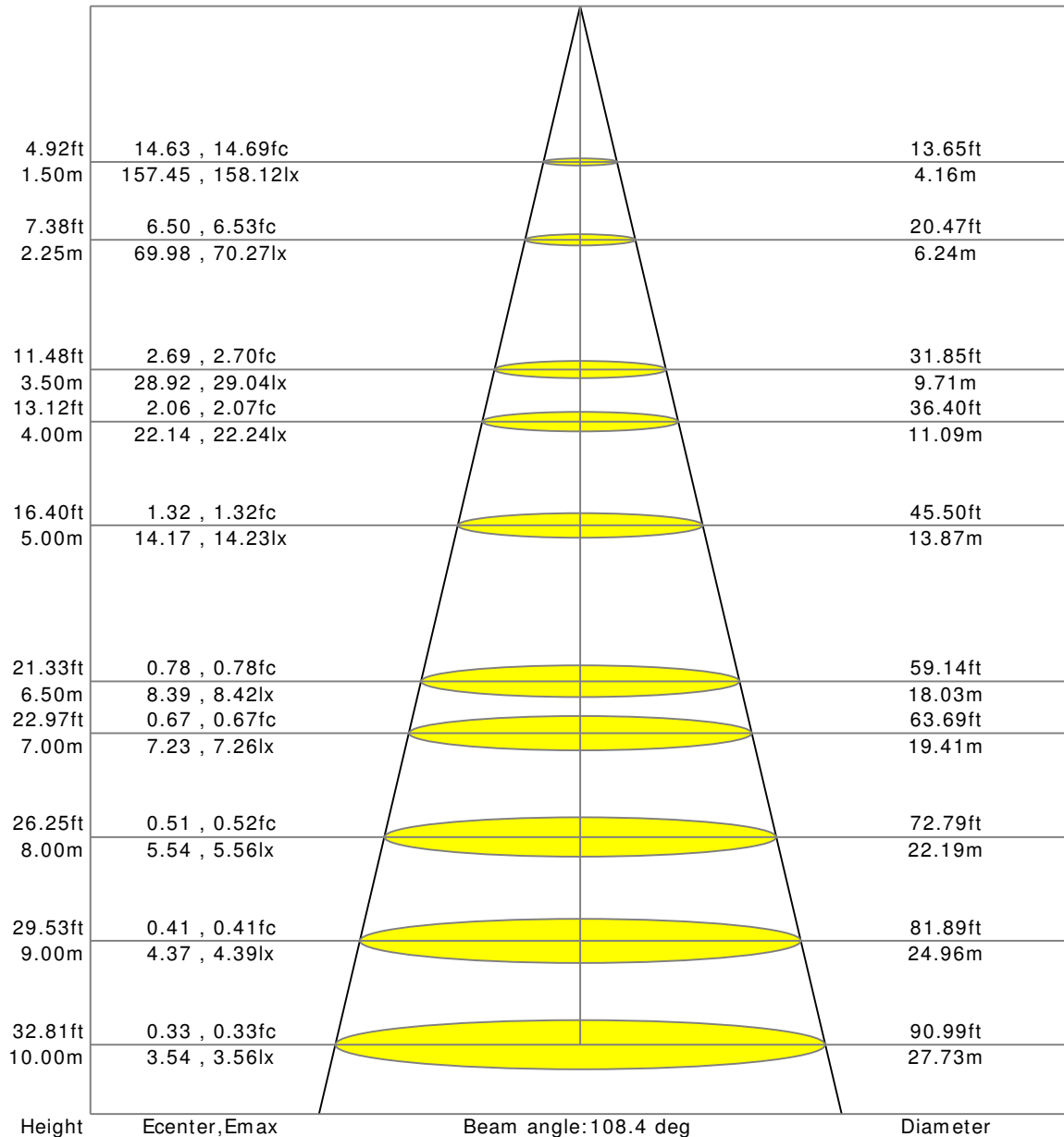
C/G	45	50	55	60	65	70	75	80	85
C0	8411	8169	7733	6935	5541	3793	2528	2432	3747
C90	8652	8545	8329	8022	7657	7083	5441	4447	3852
Dazzle	Quality	Illuminance	---	---	---	---	---	---	---
1.15	A	2000	1000	500	<= 300				
1.5	B		2000	1000	500	<= 300			
1.85	C			2000	1000	500	<= 300		
2.2	D				2000	1000	500	<= 300	
2.55	E					2000	1000	500	<= 300
---	---	a	b	c	d	e	f	g	h



C Range: 0 - 360 Deg
C Interval: 45.0 Deg
Test Speed: High
Temperature:
Operators:
Test Date: 2020/3/13 17:29:26

G Range: 0 - 90 Deg
G Interval: 1.0 Deg
Test System: Huipu CPM-1800B Goniophotometer
Humidity:
Test Distance: 6.35 m
Remarks:

LX-DI STANCE DI AGRAM



C Range: 0 - 360 Deg

C Interval: 45.0 Deg

Test Speed: High

Temperature:

Operators:

Test Date: 2020/3/13 17:29:26

G Range: 0 - 90 Deg

G Interval: 1.0 Deg

Test System: Huipu CPM-1800B Goniophotometer

Humidity:

Test Distance: 6.35 m

Remarks:

UGR(Unified Glare Rating) TABLE

RHOCC	70	70	50	50	30	70	70	50	50	30
RHOW	70	70	50	50	30	70	70	50	50	30
RHOF	20	20	20	20	20	20	20	20	20	20
Room Size X Y	Viewed Endwise					Viewed Crosswise				
2H 2H	18.69	18.76	18.89	18.95	19.19	18.61	18.69	18.81	18.88	19.12
3H	18.71	18.79	18.92	18.98	19.23	18.63	18.71	18.84	18.90	19.15
4H	18.70	18.77	18.91	18.97	19.21	18.62	18.69	18.83	18.89	19.13
6H	18.67	18.74	18.89	18.94	19.19	18.59	18.66	18.81	18.86	19.11
8H	18.65	18.72	18.87	18.92	19.18	18.57	18.64	18.79	18.85	19.10
12H	18.64	18.70	18.86	18.91	19.16	18.56	18.62	18.78	18.83	19.09
4H 2H	19.83	19.90	20.04	20.10	20.35	19.95	20.02	20.16	20.22	20.47
3H	19.90	19.97	20.13	20.18	20.43	20.01	20.08	20.24	20.29	20.54
4H	19.90	19.96	20.13	20.18	20.44	20.01	20.07	20.24	20.28	20.54
6H	19.87	19.93	20.11	20.15	20.42	19.99	20.05	20.23	20.27	20.53
8H	19.86	19.91	20.10	20.14	20.40	19.98	20.03	20.22	20.26	20.53
12H	19.84	19.89	20.09	20.12	20.39	19.96	20.01	20.21	20.25	20.52
8H 4H	20.14	20.21	20.36	20.41	20.67	19.99	20.06	20.21	20.26	20.52
6H	20.37	20.42	20.63	20.66	20.93	20.11	20.16	20.36	20.39	20.67
8H	20.37	20.42	20.63	20.66	20.94	20.12	20.16	20.38	20.41	20.68
12H	20.36	20.40	20.63	20.65	20.93	20.12	20.16	20.39	20.41	20.70
12H 4H	20.58	20.63	20.83	20.86	21.13	20.08	20.13	20.33	20.37	20.64
6H	20.66	20.70	20.92	20.95	21.22	20.12	20.16	20.38	20.41	20.68

C Range: 0 - 360 Deg
 C Interval: 45.0 Deg
 Test Speed: High
 Temperature:
 Operators:
 Test Date: 2020/3/13 17:29:26

G Range: 0 - 90 Deg
 G Interval: 1.0 Deg
 Test System: Huipu CPM-1800B Goniophotometer
 Humidity:
 Test Distance: 6.35 m
 Remarks:

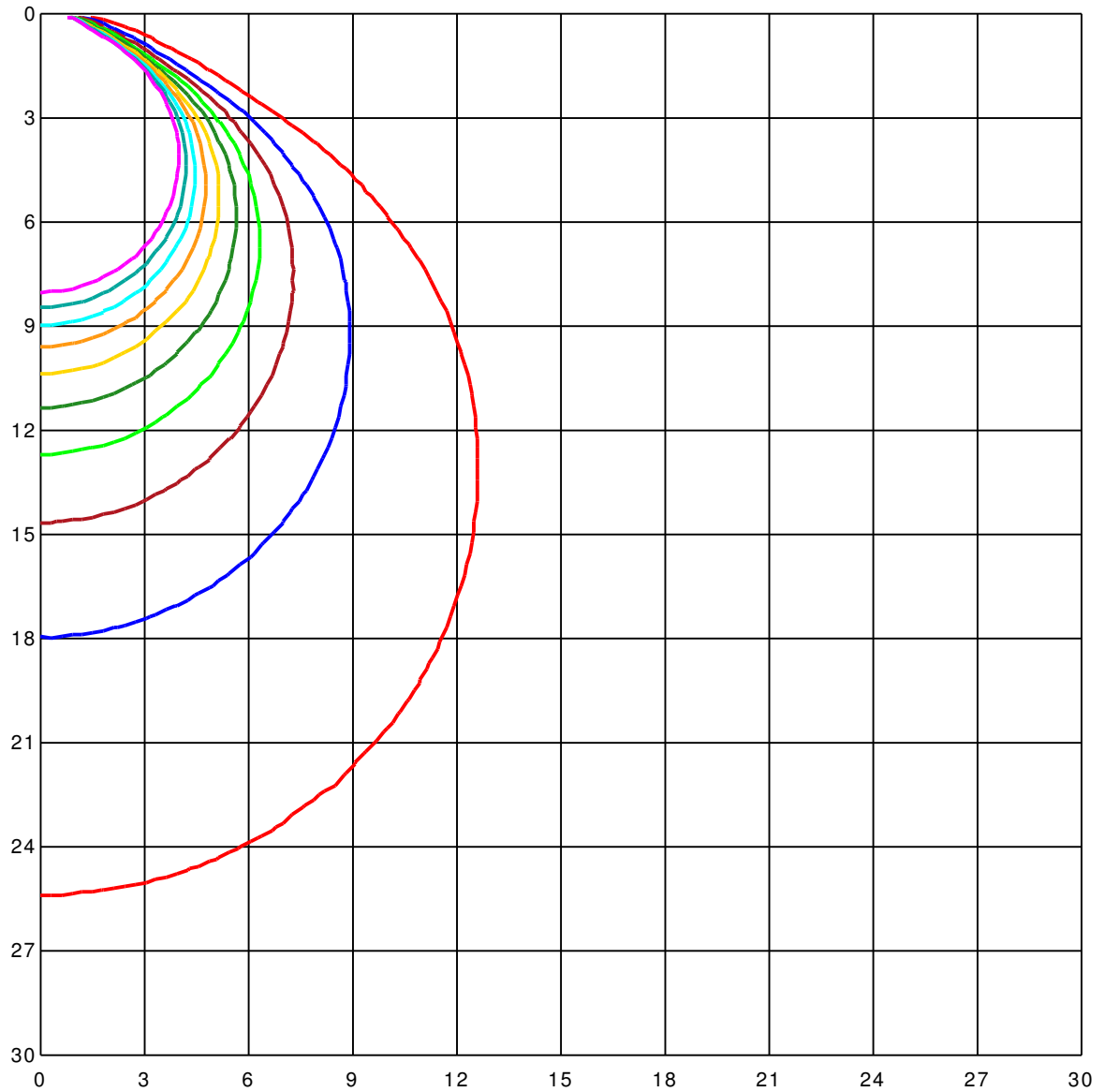
ZONAL LUMINOUS FLUX TABLE

[illegible]

C Range: 0 - 360 Deg
C Interval: 45.0 Deg
Test Speed: High
Temperature:
Operators:
Test Date: 2020/3/13 17:29:26

G Range: 0 - 90 Deg
G Interval: 1.0 Deg
Test System: Huipu CPM-1800B Goniophotometer
Humidity:
Test Distance: 6.35 m
Remarks:

SPACE I SOLX DI AGRAM



Unit of illumination:lx

5.501
4.951
4.401
3.851
3.301

2.751
2.201
1.65
1.1
0.55

C Range: 0 - 360 Deg

C Interval: 45.0 Deg

Test Speed: High

Temperature:

Operators:

Test Date: 2020/3/13 17:29:26

G Range: 0 - 90 Deg

G Interval: 1.0 Deg

Test System: Huipu CPM-1800B Goniophotometer

Humidity:

Test Distance: 6.35 m

Remarks:

LUMINOUS DISTRIBUTION INTENSITY DATA

Gamma\ C	C0	C45	C90	C135	C180	C225	C270	C315	C360	
G0	354.27	353.51	340.68	340.16	339.6	340.56	334.72	336.41	338.55	
G1	355.77	353.14	340.77	339.31	340.0	340.32	335.85	335.08	338.91	
G2	353.99	352.7	339.92	340.48	340.2	340.32	336.25	337.7	338.95	
G3	353.87	353.87	340.73	338.71	341.33	339.84	336.21	338.18	340.24	
G4	353.43	351.77	338.67	340.36	340.68	340.81	336.29	338.51	339.27	
G5	353.1	351.17	340.0	340.12	340.24	338.99	336.21	337.38	339.35	
G6	352.58	350.4	339.52	337.62	340.85	338.63	336.01	338.79	339.23	
G7	351.98	349.68	338.87	339.23	340.81	337.94	335.85	338.63	338.99	
G8	351.29	348.87	336.29	338.63	340.4	339.23	335.52	338.55	338.67	
G9	350.44	347.9	337.26	337.7	340.2	336.65	335.2	338.14	338.23	
G10	349.39	346.69	336.37	336.98	339.68	337.22	336.65	337.78	337.54	
G11	348.18	345.4	335.12	335.89	338.91	335.32	334.43	337.3	336.69	
G12	346.98	343.99	334.11	334.92	338.18	334.03	333.79	336.73	336.09	
G13	345.36	341.01	332.78	333.79	336.25	333.18	333.27	336.29	335.0	
G14	343.99	339.27	331.65	332.74	336.29	330.97	332.5	335.6	333.02	
G15	342.5	339.15	330.24	331.33	334.96	330.6	331.77	334.72	332.74	
G16	341.33	337.14	328.87	329.92	334.35	329.52	329.31	334.07	331.69	
G17	338.95	335.24	327.26	328.63	333.1	326.09	328.31	333.02	330.28	
G18	337.1	333.06	325.89	327.22	331.29	324.31	328.47	332.26	328.83	
G19	335.24	330.93	324.19	325.64	329.76	322.54	325.2	331.09	328.67	
G20	333.27	328.59	323.47	324.11	328.27	322.7	325.81	330.16	325.73	
G21	333.14	326.33	320.64	322.26	326.69	320.81	324.27	328.75	326.05	
G22	329.07	323.63	318.67	320.44	325.0	318.55	322.46	327.58	322.58	
G23	326.89	322.9	316.98	318.47	323.18	316.41	320.73	326.21	320.64	
G24	324.68	318.47	314.88	314.84	321.33	314.64	318.79	324.52	318.95	
G25	322.26	317.18	312.66	314.15	319.31	311.41	316.81	322.9	316.93	
G26	319.84	312.82	310.32	311.89	317.22	308.67	315.28	320.89	315.04	
G27	317.02	309.84	305.85	307.42	314.88	306.13	309.88	318.99	312.9	
G28	314.27	306.65	305.0	306.98	312.54	304.88	307.26	316.93	310.64	
G29	311.53	303.63	302.18	303.95	309.92	300.16	302.18	314.68	308.23	
G30	308.39	300.32	299.31	301.13	307.14	297.06	301.17	312.34	305.85	
G31	305.12	295.56	296.13	297.42	304.11	293.95	297.18	309.8	301.37	
G32	301.77	293.51	292.1	295.04	299.15	290.56	290.73	307.5	300.2	
G33	298.27	289.96	289.56	291.57	297.7	287.46	287.98	304.64	297.34	
G34	294.68	286.29	286.33	288.87	294.31	284.64	281.81	301.77	294.48	
G35	290.81	282.46	282.78	284.88	289.6	280.36	278.95	299.03	291.13	
G36	287.06	278.55	279.15	281.29	287.1	276.73	272.74	297.98	286.65	

C Range: 0 - 360 Deg

C Interval: 45.0 Deg

Test Speed: High

Temperature:

Operators:

Test Date: 2020/3/13 17:29:26

G Range: 0 - 90 Deg

G Interval: 1.0 Deg

Test System: Huipu CPM-1800B Goniophotometer

Humidity:

Test Distance: 6.35 m

Remarks:

LUMINOUS DISTRIBUTION INTENSITY DATA(Continue 1)

Gamma\ C	C0	C45	C90	C135	C180	C225	C270	C315	C360	
G37	282.98	274.35	277.22	279.31	283.1	273.02	269.76	293.18	284.48	
G38	278.87	269.43	271.73	273.83	279.23	269.07	263.27	291.41	281.21	
G39	275.64	266.13	267.86	271.45	275.16	265.2	260.0	287.02	277.3	
G40	270.2	261.65	264.03	265.85	271.01	260.89	253.39	283.87	273.63	
G41	265.81	258.23	260.12	262.14	268.18	256.61	249.84	280.77	269.84	
G42	262.9	252.46	255.93	257.98	262.34	251.05	241.61	276.98	266.05	
G43	256.73	247.82	251.98	254.27	257.58	247.54	239.48	273.43	261.93	
G44	251.98	243.02	247.42	249.27	253.31	242.66	232.82	270.12	257.7	
G45	247.22	237.9	242.82	244.72	248.59	238.27	229.23	266.09	253.55	
G46	242.26	232.54	238.35	240.12	244.03	233.02	222.42	261.93	249.52	
G47	236.94	227.46	232.22	235.28	239.23	227.78	217.46	257.98	244.84	
G48	231.77	221.89	227.74	230.28	234.48	222.38	211.33	253.71	239.88	
G49	226.33	216.98	220.81	225.12	229.31	216.98	204.72	247.74	235.12	
G50	220.48	210.04	213.51	219.72	224.27	211.37	199.96	243.35	230.6	
G51	213.51	204.07	206.29	214.35	219.11	206.81	193.14	239.23	225.12	
G52	206.57	197.1	200.44	208.63	213.91	199.39	187.22	234.44	219.56	
G53	201.21	190.4	191.98	202.98	208.47	193.87	179.56	229.11	213.83	
G54	194.07	184.23	185.08	196.85	203.06	187.9	175.6	223.27	208.19	
G55	186.98	177.42	177.82	191.09	197.42	181.45	167.62	218.02	201.81	
G56	179.03	170.4	170.48	184.92	191.69	175.56	161.53	212.94	195.4	
G57	170.73	162.78	163.79	178.99	186.41	169.56	153.43	206.85	188.95	
G58	161.77	154.96	156.05	172.86	180.6	163.06	146.45	200.85	182.54	
G59	152.5	146.98	149.23	166.65	175.36	156.85	139.44	195.12	175.44	
G60	143.99	138.71	140.52	160.44	170.04	149.68	132.78	190.28	167.94	
G61	135.56	129.96	132.98	154.31	164.23	143.23	125.6	182.82	160.52	
G62	126.98	120.89	125.36	147.98	158.43	137.86	118.51	175.89	152.58	
G63	117.78	111.85	118.27	141.89	152.5	131.05	111.17	169.52	142.74	
G64	108.75	102.98	110.69	135.56	146.61	124.31	104.68	162.98	132.74	
G65	99.48	93.67	102.82	129.44	139.92	117.42	97.3	155.48	123.59	
G66	85.2	84.8	95.69	123.06	119.68	110.93	90.36	147.3	111.09	
G67	73.87	75.44	87.98	116.61	112.14	103.95	83.95	139.52	92.66	
G68	65.89	67.14	80.52	110.2	105.56	96.85	76.57	131.29	83.19	
G69	59.44	59.23	73.51	103.59	99.92	89.88	70.28	122.38	75.89	
G70	53.63	51.9	66.01	96.89	94.31	83.15	63.1	112.62	68.59	
G71	47.62	42.42	58.79	90.36	88.35	75.73	56.17	104.35	59.88	
G72	42.86	36.65	51.45	74.64	82.5	61.29	49.76	93.35	52.26	
G73	39.03	32.62	45.28	67.74	76.73	55.12	43.47	83.35	46.53	

C Range: 0 - 360 Deg
 C Interval: 45.0 Deg
 Test Speed: High
 Temperature:
 Operators:
 Test Date: 2020/3/13 17:29:26

G Range: 0 - 90 Deg
 G Interval: 1.0 Deg
 Test System: Huipu CPM-1800B Goniophotometer
 Humidity:
 Test Distance: 6.35 m
 Remarks:

LUMINOUS DISTRIBUTION INTENSITY DATA(Continue 2)

[illegible]

C Range: 0 - 360 Deg
C Interval: 45.0 Deg
Test Speed: High
Temperature:
Operators:
Test Date: 2020/3/13 17:29:26

G Range: 0 - 90 Deg
G Interval: 1.0 Deg
Test System: Huipu CPM-1800B Goniophotometer
Humidity:
Test Distance: 6.35 m
Remarks: