

LUMINAIRE PHOTOMETRIC TEST REPORT

Luminaire Property

Manufacturer: 0
Luminaire Type: 127V-2835-99L-5000K
Lamp Type:
Luminous Width: 0 mm
Luminous Length: 0 mm
Luminous Height: 0 mm

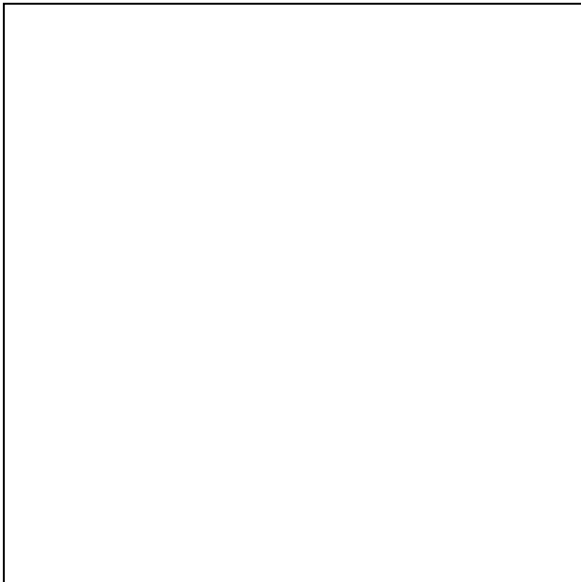
Voltage(V): 126.88 V
Current(A): 0.0540 A
Power(W): 6.49 W
Power Factor: 0.9440
Lamp Luminous Flux: 549.88

Photometric Results

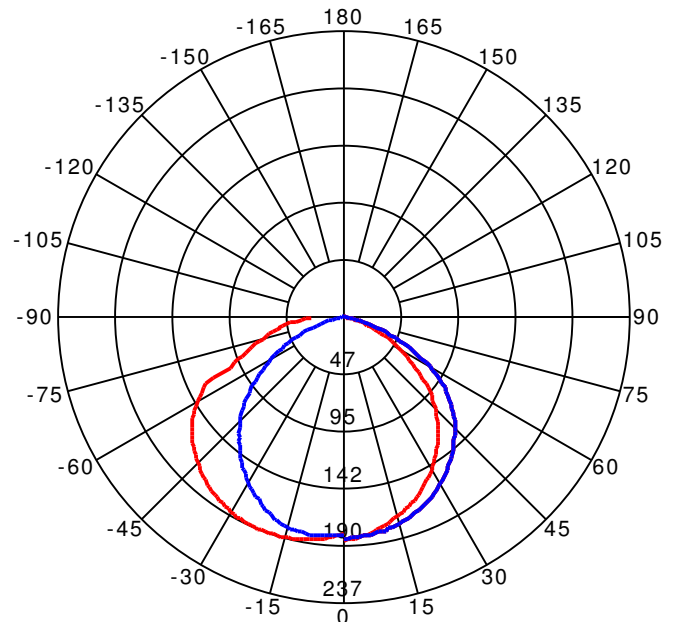
CIE Class: Direct
Luminaire Luminous Flux: 549.8829
Downward Ratio: 100.00%
Luminaire Efficacy Rating(LER): 84.73 lm/W
Beam Angle(50%) C0-180,C90-270: 116.6,110.1
Field Angle(10%) C0-180,C90-270: 160.9,147.8

Max. Intensity: 189.88 cd
Max.Intensity Angle: C= 180 Gamma= 17
Upward Ratio: 0.00%
Efficacy: 100.00%
Center Intensity: 186.17 cd

Picture of Luminaire



Luminous Intensity Distribution Curve



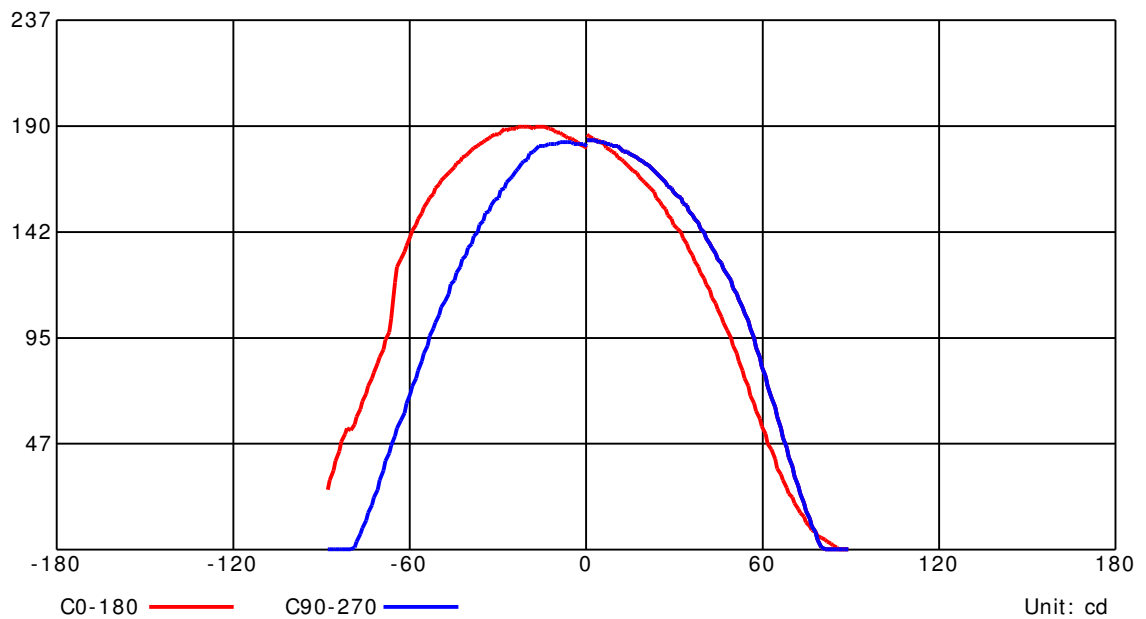
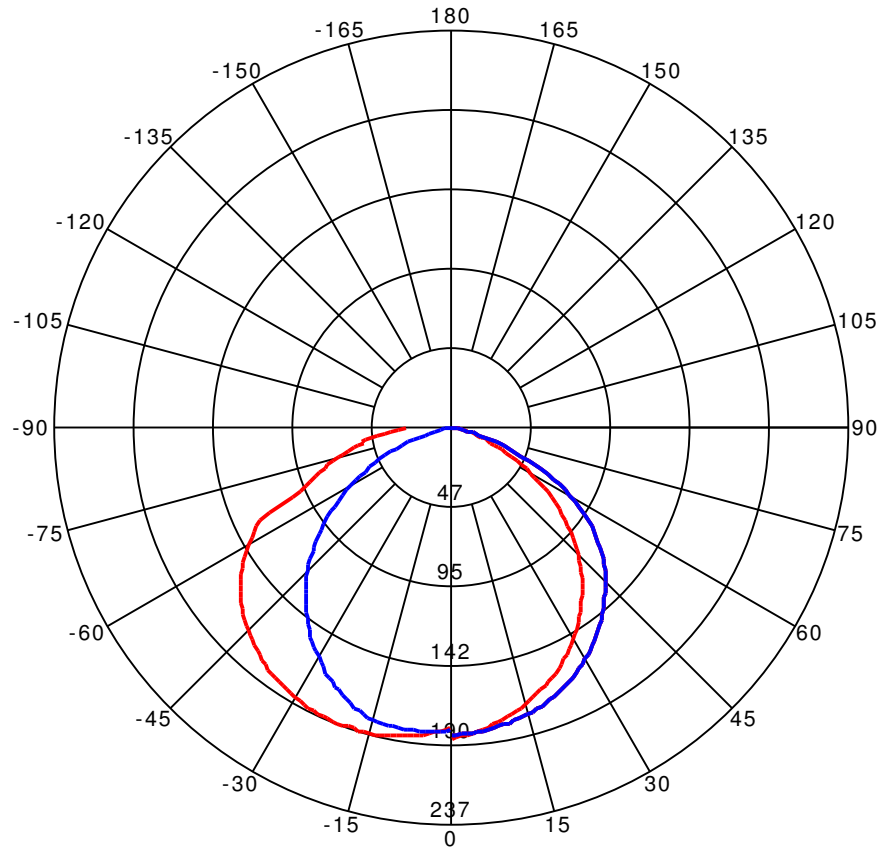
Beam Angle(50%) C0-180,C90-270: 110.1 deg

C0-180 ——— C90-270 ———

C Range: 0 - 360 Deg
C Interval: 45.0 Deg
Test Speed: High
Temperature:
Operators:
Test Date: 2020/3/14 10:43:31

G Range: 0 - 90 Deg
G Interval: 1.0 Deg
Test System: Huipu CPM-1800B Goniophotometer
Humidity:
Test Distance: 6.35 m
Remarks:

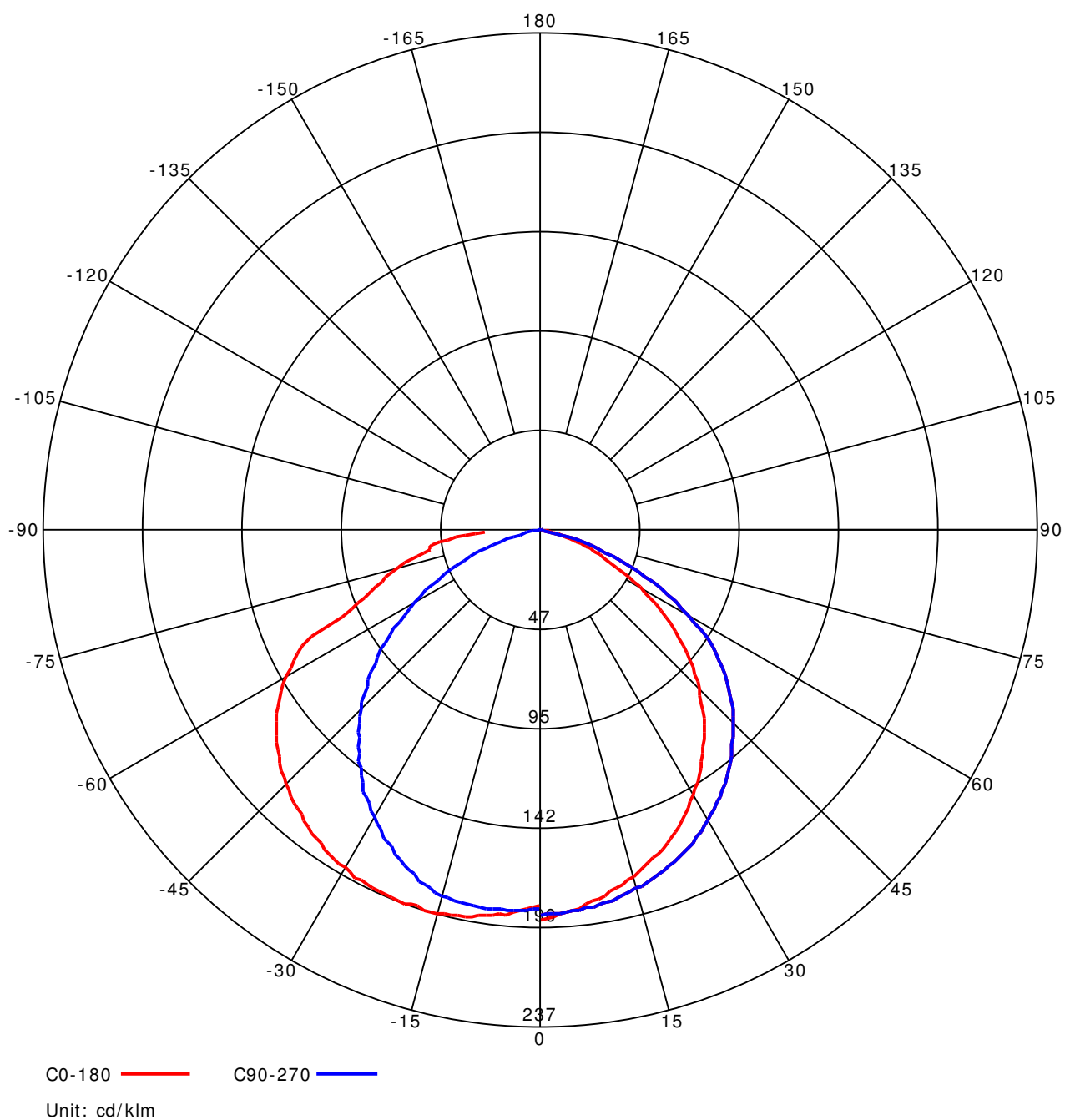
Luminous Intensity Distribution Curve



C Range: 0 - 360 Deg
C Interval: 45.0 Deg
Test Speed: High
Temperature:
Operators:
Test Date: 2020/3/14 10:43:31

G Range: 0 - 90 Deg
G Interval: 1.0 Deg
Test System: Huipu CPM-1800B Goniophotometer
Humidity:
Test Distance: 6.35 m
Remarks:

Luminous Intensity Distribution Curve



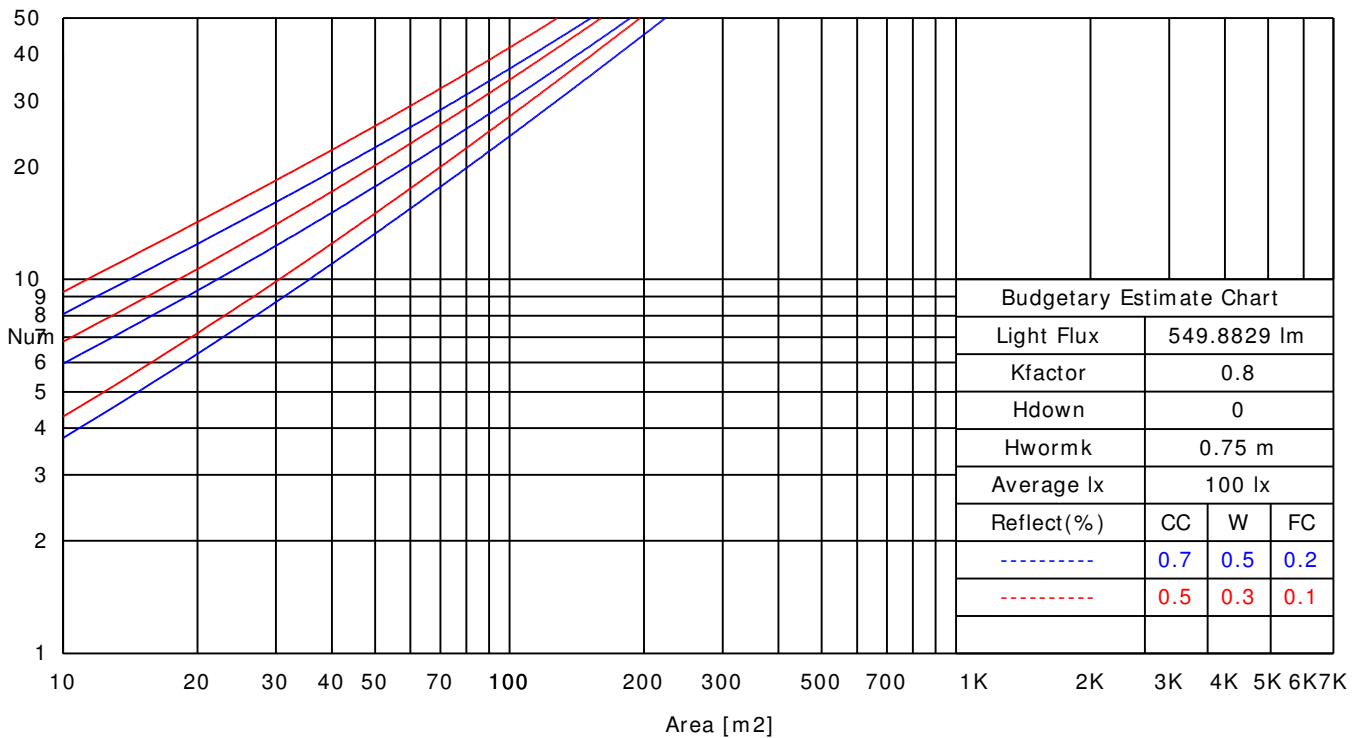
C Range: 0 - 360 Deg
C Interval: 45.0 Deg
Test Speed: High
Temperature:
Operators:
Test Date: 2020/3/14 10:43:31

G Range: 0 - 90 Deg
G Interval: 1.0 Deg
Test System: Huipu CPM-1800B Goniophotometer
Humidity:
Test Distance: 6.35 m
Remarks:

UTILIZATION FACTORS TABLE

RHOCC	80			70			50			30			10			0
RHOW	50	30	10	50	30	10	50	30	10	50	30	10	50	30	10	0
RCR	COEFFICIENTS OF UTILIZATION FOR RHOFC= 20															
0	1.19	1.19	1.19	1.16	1.16	1.16	1.11	1.11	1.11	1.06	1.06	1.06	1.02	1.02	1.02	1.00
1	1.07	1.05	1.04	1.06	1.04	1.02	1.02	1.00	0.98	0.97	0.95	0.93	0.90	0.88	0.86	0.81
2	0.95	0.93	0.91	0.94	0.92	0.90	0.91	0.88	0.86	0.88	0.84	0.81	0.82	0.79	0.76	0.71
3	0.85	0.82	0.81	0.84	0.81	0.79	0.82	0.79	0.76	0.79	0.75	0.72	0.76	0.71	0.67	0.63
4	0.76	0.73	0.72	0.76	0.72	0.70	0.74	0.70	0.67	0.72	0.68	0.64	0.69	0.64	0.60	0.56
5	0.68	0.66	0.64	0.68	0.65	0.63	0.68	0.63	0.60	0.66	0.61	0.57	0.64	0.59	0.54	0.50
6	0.62	0.60	0.58	0.62	0.59	0.57	0.62	0.57	0.54	0.61	0.56	0.52	0.59	0.54	0.49	0.45
7	0.57	0.54	0.53	0.57	0.54	0.52	0.57	0.53	0.50	0.56	0.51	0.47	0.55	0.49	0.45	0.41
8	0.52	0.50	0.48	0.52	0.49	0.47	0.53	0.48	0.45	0.52	0.47	0.43	0.52	0.46	0.41	0.38
9	0.48	0.46	0.45	0.49	0.46	0.44	0.49	0.45	0.42	0.49	0.44	0.40	0.48	0.42	0.38	0.35
10	0.45	0.43	0.41	0.45	0.42	0.41	0.46	0.42	0.39	0.46	0.41	0.37	0.46	0.40	0.35	0.32

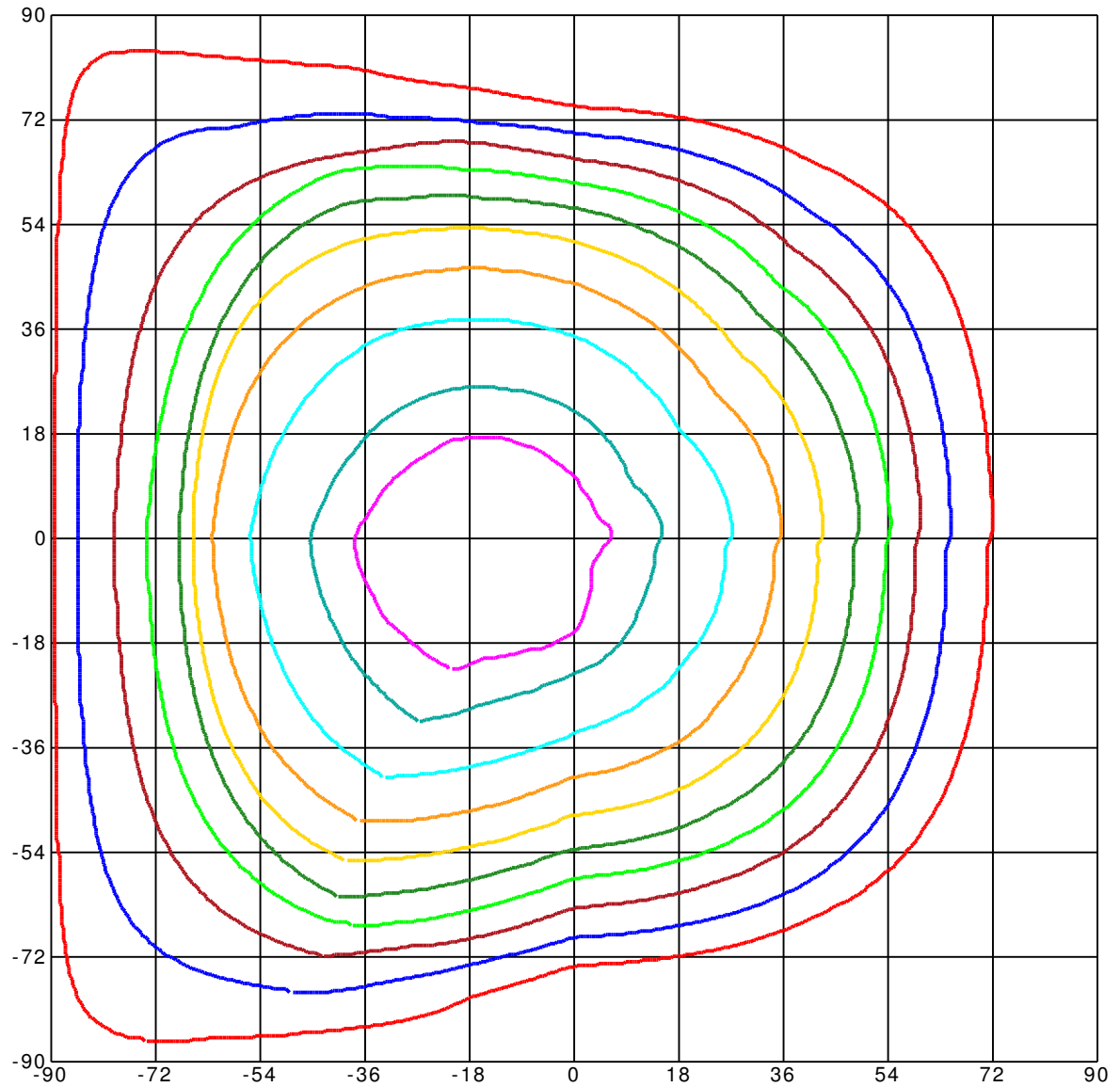
LUMINAIRE BUDGETARY ESTIMATE DIAGRAM



C Range: 0 - 360 Deg
 C Interval: 45.0 Deg
 Test Speed: High
 Temperature:
 Operators:
 Test Date: 2020/3/14 10:43:31

G Range: 0 - 90 Deg
 G Interval: 1.0 Deg
 Test System: Huipu CPM-1800B Goniophotometer
 Humidity:
 Test Distance: 6.35 m
 Remarks:

ISOCANDELA DIAGRAM (RECTANGULAR)



Unit of intensity:cd $I_{max}(100\%)$: 189.879 cd

180.385(95% I_{max})

170.891(90% I_{max})

151.903(80% I_{max})

132.915(70% I_{max})

113.927(60% I_{max})

94.939(50% I_{max})

75.951(40% I_{max})

56.964(30% I_{max})

37.976(20% I_{max})

18.988(10% I_{max})

C Range: 0 - 360 Deg

C Interval: 45.0 Deg

Test Speed: High

Temperature:

Operators:

Test Date: 2020/3/14 10:43:31

G Range: 0 - 90 Deg

G Interval: 1.0 Deg

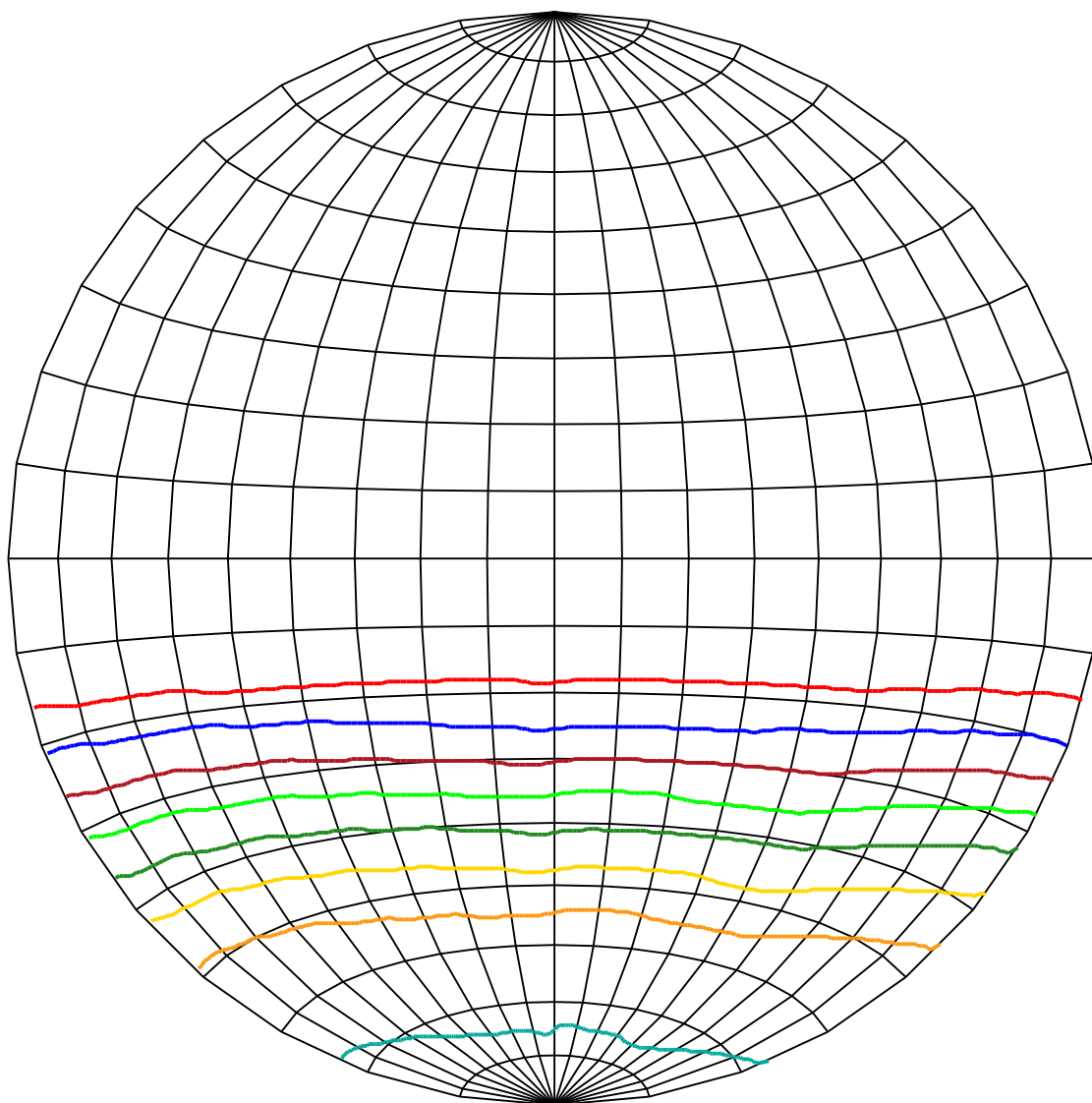
Test System: Huipu CPM-1800B Goniophotometer

Humidity:

Test Distance: 6.35 m

Remarks:

ISOCANDELA DIAGRAM (SPHERE)



Unit of intensity:cd Imax(100%): 189.879 cd

180.385(95%Imax)	94.939(50%Imax)
170.891(90%Imax)	75.951(40%Imax)
151.903(80%Imax)	56.964(30%Imax)
132.915(70%Imax)	37.976(20%Imax)
113.927(60%Imax)	18.988(10%Imax)

C Range: 0 - 360 Deg

C Interval: 45.0 Deg

Test Speed: High

Temperature:

Operators:

Test Date: 2020/3/14 10:43:31

G Range: 0 - 90 Deg

G Interval: 1.0 Deg

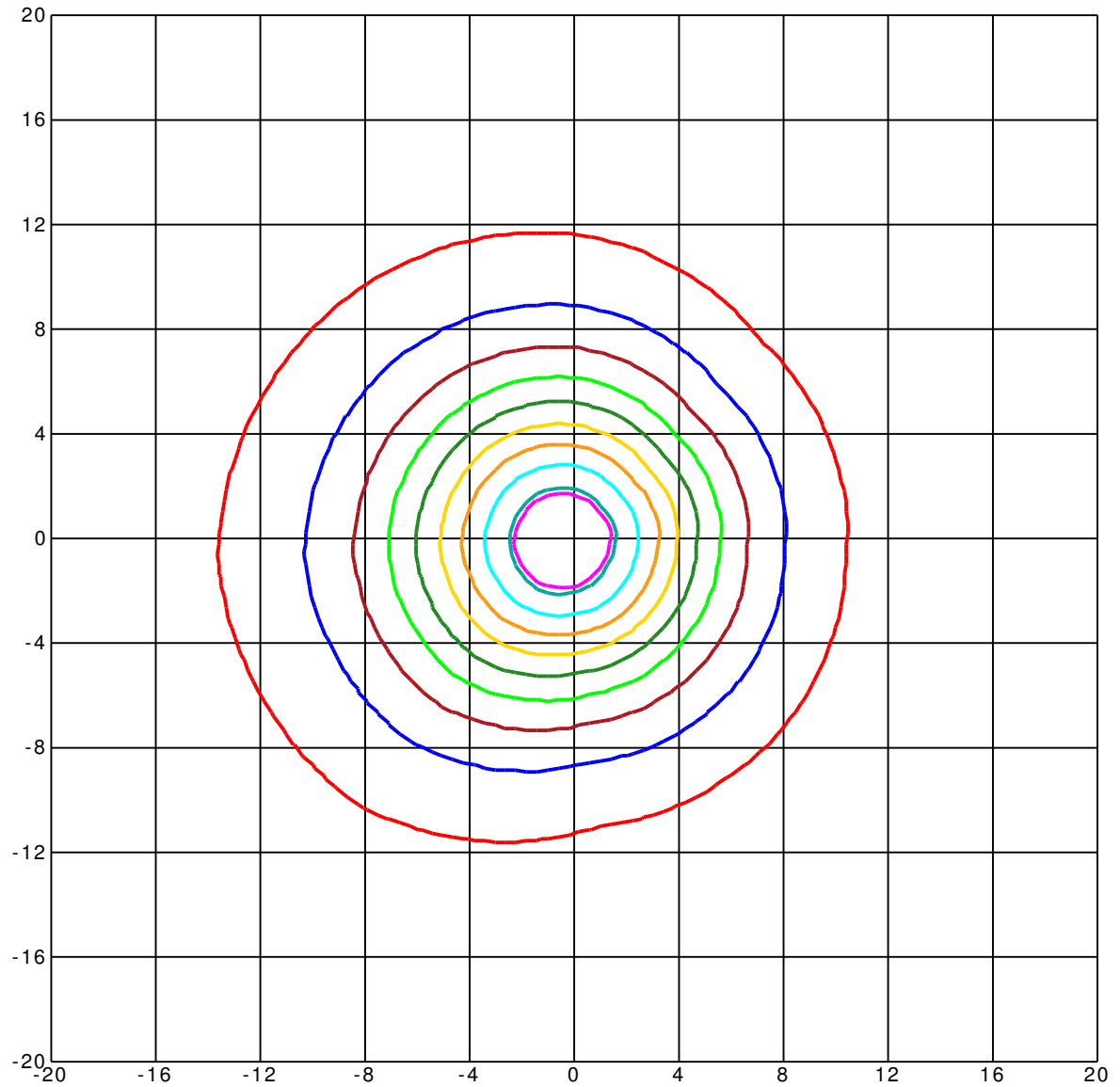
Test System: Huipu CPM-1800B Goniophotometer

Humidity:

Test Distance: 6.35 m

Remarks:

ISOLX DIAGRAM



Unit of illumination:lx

Height of plane:8.0(m)/26.25(ft)

2.676(1% E_{max})

2.618(1% E_{max})

2.327(1% E_{max})

2.036(1% E_{max})

1.745(1% E_{max})

1.454(1% E_{max})

1.164(1% E_{max})

0.873(0% E_{max})

0.582(0% E_{max})

0.291(0% E_{max})

C Range: 0 - 360 Deg

C Interval: 45.0 Deg

Test Speed: High

Temperature:

Operators:

Test Date: 2020/3/14 10:43:31

G Range: 0 - 90 Deg

G Interval: 1.0 Deg

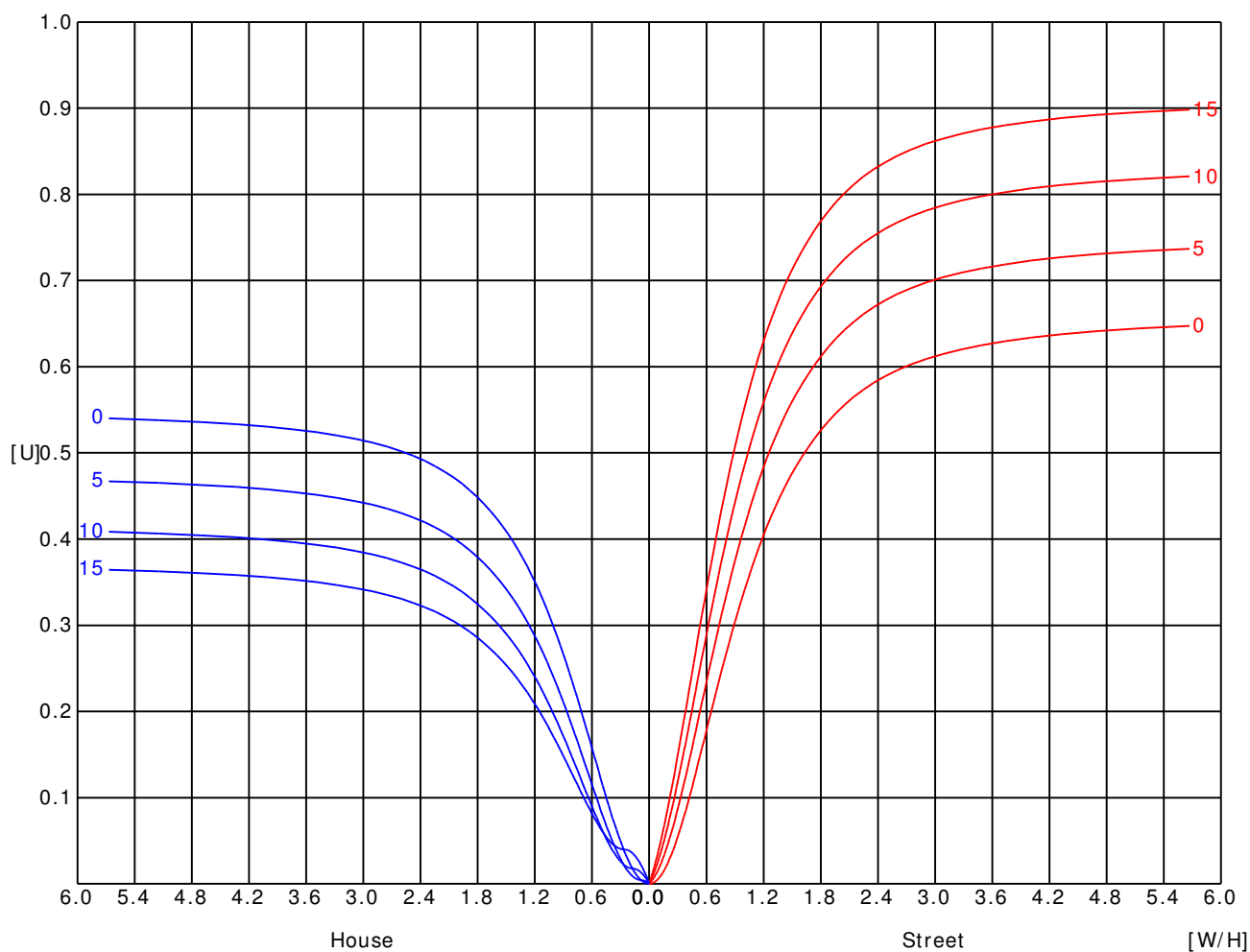
Test System: Huipu CPM-1800B Goniophotometer

Humidity:

Test Distance: 6.35 m

Remarks:

UTILIZATION FACTOR DIAGRAM (ROAD)

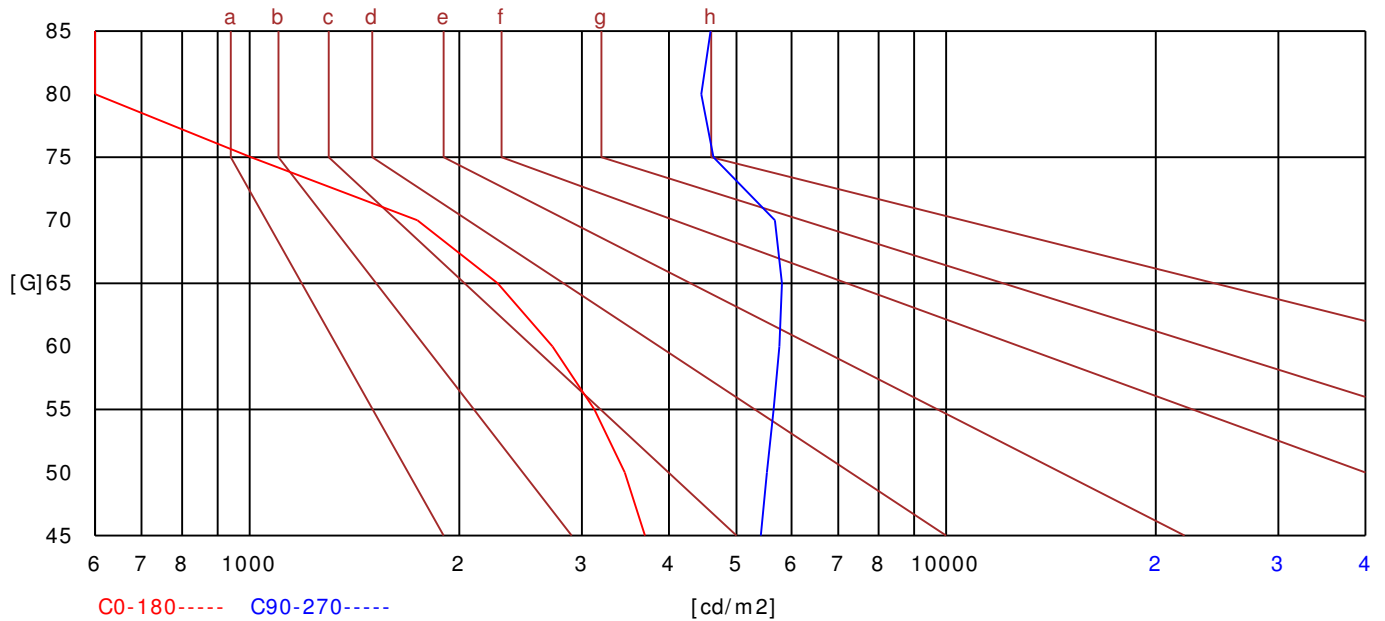


C Range: 0 - 360 Deg
C Interval: 45.0 Deg
Test Speed: High
Temperature:
Operators:
Test Date: 2020/3/14 10:43:31

G Range: 0 - 90 Deg
G Interval: 1.0 Deg
Test System: Huipu CPM-1800B Goniophotometer
Humidity:
Test Distance: 6.35 m
Remarks:

B R I G H T L I M I T D I A G R A M

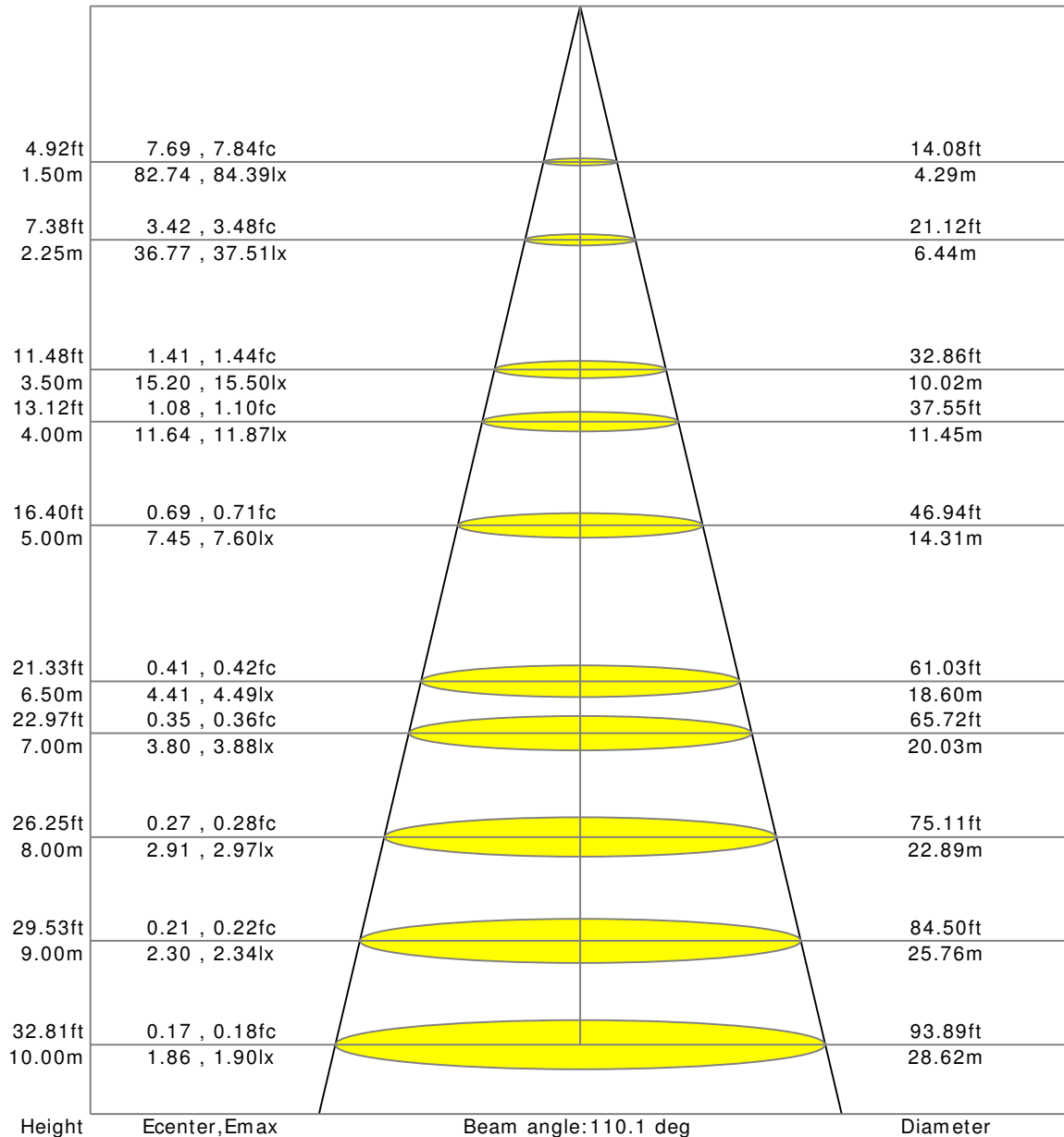
C/G	45	50	55	60	65	70	75	80	85
C0	3697	3456	3128	2722	2271	1742	1005	238	0
C90	5420	5531	5654	5766	5811	5680	4635	4453	4592
Dazzle	Quality	Illuminance	---	---	---	---	---	---	---
1.15	A	2000	1000	500	<= 300				
1.5	B		2000	1000	500	<= 300			
1.85	C			2000	1000	500	<= 300		
2.2	D				2000	1000	500	<= 300	
2.55	E					2000	1000	500	<= 300
---	---	a	b	c	d	e	f	g	h



C Range: 0 - 360 Deg
C Interval: 45.0 Deg
Test Speed: High
Temperature:
Operators:
Test Date: 2020/3/14 10:43:31

G Range: 0 - 90 Deg
G Interval: 1.0 Deg
Test System: Huipu CPM-1800B Goniophotometer
Humidity:
Test Distance: 6.35 m
Remarks:

LX-DI STANCE DI AGRAM



C Range: 0 - 360 Deg
 C Interval: 45.0 Deg
 Test Speed: High
 Temperature:
 Operators:
 Test Date: 2020/3/14 10:43:31

G Range: 0 - 90 Deg
 G Interval: 1.0 Deg
 Test System: Huipu CPM-1800B Goniophotometer
 Humidity:
 Test Distance: 6.35 m
 Remarks:

UGR(Unified Glare Rating) TABLE

RHOCC	70	70	50	50	30	70	70	50	50	30
RHOW	70	70	50	50	30	70	70	50	50	30
RHOF	20	20	20	20	20	20	20	20	20	20
Room Size X Y	Viewed Endwise					Viewed Crosswise				
2H 2H	16.33	16.41	16.53	16.60	16.84	17.28	17.36	17.48	17.55	17.79
3H	16.39	16.47	16.60	16.66	16.91	17.29	17.37	17.50	17.56	17.81
4H	16.37	16.45	16.59	16.64	16.89	17.27	17.34	17.48	17.54	17.79
6H	16.35	16.42	16.56	16.62	16.87	17.24	17.31	17.46	17.51	17.76
8H	16.33	16.40	16.55	16.60	16.86	17.22	17.29	17.44	17.50	17.75
12H	16.31	16.38	16.54	16.59	16.84	17.21	17.28	17.43	17.48	17.74
4H 2H	17.48	17.56	17.70	17.75	18.00	18.84	18.92	19.05	19.11	19.36
3H	17.58	17.64	17.80	17.85	18.11	18.87	18.94	19.10	19.15	19.40
4H	17.56	17.63	17.79	17.84	18.10	18.85	18.92	19.08	19.13	19.39
6H	17.53	17.59	17.77	17.81	18.08	18.82	18.88	19.06	19.10	19.36
8H	17.51	17.57	17.75	17.79	18.06	18.80	18.85	19.04	19.08	19.35
12H	17.49	17.54	17.74	17.77	18.04	18.78	18.83	19.03	19.06	19.33
8H 4H	17.56	17.63	17.78	17.84	18.09	18.86	18.93	19.08	19.13	19.39
6H	17.61	17.66	17.87	17.90	18.17	18.82	18.87	19.08	19.11	19.38
8H	17.59	17.63	17.85	17.88	18.16	18.80	18.85	19.06	19.09	19.37
12H	17.56	17.61	17.83	17.86	18.14	18.78	18.82	19.05	19.07	19.35
12H 4H	17.64	17.69	17.89	17.92	18.19	18.84	18.89	19.09	19.13	19.40
6H	17.60	17.64	17.86	17.89	18.17	18.80	18.85	19.06	19.09	19.37

C Range: 0 - 360 Deg
 C Interval: 45.0 Deg
 Test Speed: High
 Temperature:
 Operators:
 Test Date: 2020/3/14 10:43:31

G Range: 0 - 90 Deg
 G Interval: 1.0 Deg
 Test System: Huipu CPM-1800B Goniophotometer
 Humidity:
 Test Distance: 6.35 m
 Remarks:

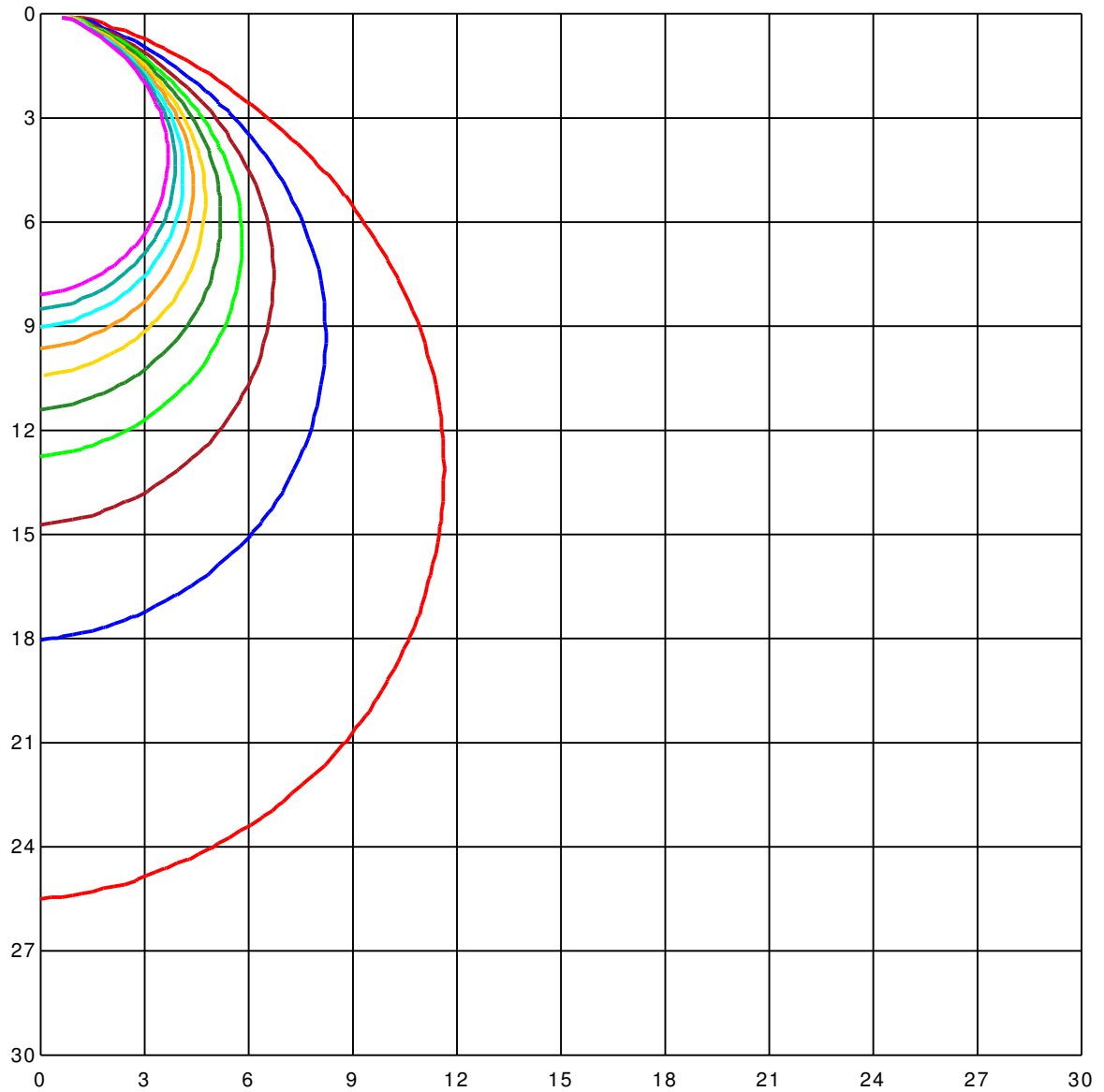
ZONAL LUMINOUS FLUX TABLE

[illegible]

C Range: 0 - 360 Deg
C Interval: 45.0 Deg
Test Speed: High
Temperature:
Operators:
Test Date: 2020/3/14 10:43:31

G Range: 0 - 90 Deg
G Interval: 1.0 Deg
Test System: Huipu CPM-1800B Goniophotometer
Humidity:
Test Distance: 6.35 m
Remarks:

SPACE I SOLX DI AGRAM



Unit of illumination:lx

2.858
2.572
2.286
2.0
1.715

1.429
1.143
0.857
0.572
0.286

C Range: 0 - 360 Deg

C Interval: 45.0 Deg

Test Speed: High

Temperature:

Operators:

Test Date: 2020/3/14 10:43:31

G Range: 0 - 90 Deg

G Interval: 1.0 Deg

Test System: Huipu CPM-1800B Goniophotometer

Humidity:

Test Distance: 6.35 m

Remarks:

LUMINOUS DISTRIBUTION INTENSITY DATA

Gamma\ C	C0	C45	C90	C135	C180	C225	C270	C315	C360	
G0	186.17	184.23	183.75	182.5	179.68	181.29	181.13	182.5	184.27	
G1	185.24	183.63	183.67	182.82	180.56	182.14	181.41	181.98	183.59	
G2	184.76	182.98	183.51	183.23	181.45	182.7	181.77	181.61	182.82	
G3	183.91	182.26	183.31	183.51	182.34	183.55	181.98	181.01	181.94	
G4	183.14	181.45	183.06	184.6	183.19	184.19	182.18	181.09	181.13	
G5	182.42	180.44	182.7	184.15	184.68	184.88	182.26	179.92	180.89	
G6	181.85	179.68	182.46	184.39	184.68	184.64	182.38	179.31	179.19	
G7	180.32	178.63	181.94	184.68	185.44	185.89	182.34	178.63	178.95	
G8	179.27	177.5	181.77	184.8	186.09	185.56	182.42	177.9	177.94	
G9	178.31	176.41	181.05	185.12	186.73	186.73	182.74	177.22	176.25	
G10	177.22	175.69	180.52	185.08	187.38	187.1	182.14	176.77	175.12	
G11	176.09	174.8	180.73	184.88	187.98	187.26	181.94	175.6	174.07	
G12	175.08	172.9	179.35	185.2	188.43	187.54	181.85	174.68	172.9	
G13	173.91	171.61	178.75	185.24	188.87	187.66	181.57	173.87	171.77	
G14	172.7	170.36	178.06	185.08	189.15	187.78	181.33	172.9	170.44	
G15	171.53	169.03	177.26	184.92	189.52	187.86	181.01	171.77	168.43	
G16	170.16	167.7	176.94	184.72	189.72	187.82	180.56	170.73	167.82	
G17	168.83	166.29	175.69	184.39	189.88	187.82	179.15	169.6	166.53	
G18	167.06	164.96	174.96	184.07	189.07	187.7	177.94	168.43	164.35	
G19	165.69	163.51	173.99	183.19	189.15	187.46	177.38	166.53	163.59	
G20	164.76	161.98	173.1	183.19	189.84	186.13	174.84	165.81	162.02	
G21	163.19	160.4	172.1	182.7	189.72	185.44	174.19	164.31	160.44	
G22	161.57	158.71	171.05	182.42	189.52	185.16	173.06	162.22	158.67	
G23	159.88	157.06	169.88	181.41	189.31	184.8	170.69	160.16	156.94	
G24	158.06	155.24	168.59	180.73	188.99	183.71	169.84	158.31	155.04	
G25	156.29	153.39	167.46	179.92	188.75	182.7	167.18	156.77	153.23	
G26	154.27	150.89	166.09	179.11	188.35	182.66	165.97	154.96	151.21	
G27	152.38	149.35	164.68	178.91	187.94	181.77	164.92	153.79	149.19	
G28	150.2	147.3	163.19	177.3	188.27	181.94	162.02	151.41	147.06	
G29	148.19	144.92	161.73	176.33	187.06	181.33	160.85	149.44	145.6	
G30	146.05	142.98	160.2	175.32	186.45	180.6	157.78	147.3	142.74	
G31	143.83	140.73	158.87	174.23	185.85	179.72	156.45	144.48	140.93	
G32	142.14	138.31	157.26	173.14	185.16	178.87	154.27	141.85	138.14	
G33	139.27	135.93	155.12	172.06	184.52	177.94	151.94	139.72	135.93	
G34	136.89	133.63	153.95	170.56	183.75	177.34	150.93	137.66	133.51	
G35	134.56	131.13	151.61	169.6	182.62	177.66	147.06	135.56	131.09	
G36	132.14	128.71	149.76	168.27	181.77	176.25	145.6	134.27	128.55	

C Range: 0 - 360 Deg
 C Interval: 45.0 Deg
 Test Speed: High
 Temperature:
 Operators:
 Test Date: 2020/3/14 10:43:31

G Range: 0 - 90 Deg
 G Interval: 1.0 Deg
 Test System: Huipu CPM-1800B Goniophotometer
 Humidity:
 Test Distance: 6.35 m
 Remarks:

LUMINOUS DISTRIBUTION INTENSITY DATA(Continue 1)

Gamma\ C	C0	C45	C90	C135	C180	C225	C270	C315	C360	
G37	129.6	126.21	147.82	166.89	181.25	175.69	142.14	132.5	125.97	
G38	126.98	123.63	146.25	165.48	180.24	173.75	140.48	131.49	123.27	
G39	124.35	121.09	143.87	164.03	179.15	173.19	136.94	129.15	120.64	
G40	121.69	118.39	141.85	162.42	177.26	171.77	135.28	126.65	117.5	
G41	119.07	115.81	139.68	160.69	176.33	169.64	131.69	124.11	115.16	
G42	116.29	113.02	137.18	158.71	175.6	168.1	129.84	121.53	112.34	
G43	113.02	110.16	135.32	156.89	173.95	166.61	126.33	118.79	109.44	
G44	110.08	107.42	132.98	155.2	172.9	165.0	123.99	116.01	106.41	
G45	107.58	104.56	130.12	153.31	171.45	163.35	120.64	113.02	103.35	
G46	104.44	101.53	128.19	151.21	170.04	161.53	118.51	110.2	100.2	
G47	101.29	98.59	125.64	149.64	168.51	159.72	114.92	107.34	97.02	
G48	97.98	95.36	123.06	146.89	166.89	157.22	111.09	104.11	93.75	
G49	94.72	92.22	120.44	145.2	165.28	155.69	108.91	100.89	90.73	
G50	91.21	88.87	117.58	142.22	163.47	153.43	105.16	97.58	87.26	
G51	87.66	85.64	114.64	140.32	161.61	150.69	101.29	94.27	83.27	
G52	84.07	82.18	111.94	137.42	159.64	148.79	98.91	90.77	79.68	
G53	80.52	78.75	108.99	134.88	157.7	146.37	95.36	87.26	76.13	
G54	76.73	75.2	105.6	132.34	155.56	143.19	91.33	83.67	72.46	
G55	73.1	71.77	102.5	129.72	153.31	140.48	87.54	80.12	68.83	
G56	69.4	68.31	99.19	127.02	150.93	138.35	84.39	76.45	65.2	
G57	65.77	64.88	94.96	124.27	148.27	135.56	80.24	72.9	61.69	
G58	62.1	61.37	90.52	121.33	145.81	132.66	76.57	69.15	58.06	
G59	58.59	57.9	86.21	118.43	143.06	129.68	72.98	65.48	54.56	
G60	54.92	54.44	82.14	115.32	140.04	126.57	69.44	61.49	51.09	
G61	51.37	51.09	77.78	112.14	136.33	123.43	65.6	58.1	47.7	
G62	47.86	47.78	72.9	108.87	133.14	120.2	61.61	54.48	44.4	
G63	44.52	44.6	68.47	105.24	130.4	117.3	57.82	50.89	41.17	
G64	40.36	41.41	63.99	101.9	126.85	113.35	54.15	47.34	37.22	
G65	36.33	38.39	59.23	98.23	120.0	109.76	50.48	43.87	33.67	
G66	33.47	35.32	54.72	94.31	103.1	105.97	46.73	40.4	31.01	
G67	30.77	32.42	50.2	90.28	97.74	102.02	43.31	36.98	28.39	
G68	28.06	29.52	45.81	86.25	93.59	98.23	39.35	33.63	25.85	
G69	25.44	26.65	41.77	82.02	89.8	93.59	35.32	30.28	23.43	
G70	23.02	23.83	37.38	77.7	86.29	89.07	31.29	25.81	21.13	
G71	20.65	19.92	33.15	63.67	83.23	84.52	27.1	20.16	18.91	
G72	18.43	16.57	28.83	58.27	79.6	76.98	23.35	17.54	16.85	
G73	16.33	14.27	24.88	54.8	76.85	72.5	19.68	15.12	14.96	

C Range: 0 - 360 Deg

C Interval: 45.0 Deg

Test Speed: High

Temperature:

Operators:

Test Date: 2020/3/14 10:43:31

G Range: 0 - 90 Deg

G Interval: 1.0 Deg

Test System: Huipu CPM-1800B Goniophotometer

Humidity:

Test Distance: 6.35 m

Remarks:

LUMINOUS DISTRIBUTION INTENSITY DATA(Continue 2)

[illegible]

C Range: 0 - 360 Deg
C Interval: 45.0 Deg
Test Speed: High
Temperature:
Operators:
Test Date: 2020/3/14 10:43:31

G Range: 0 - 90 Deg
G Interval: 1.0 Deg
Test System: Huipu CPM-1800B Goniophotometer
Humidity:
Test Distance: 6.35 m
Remarks: