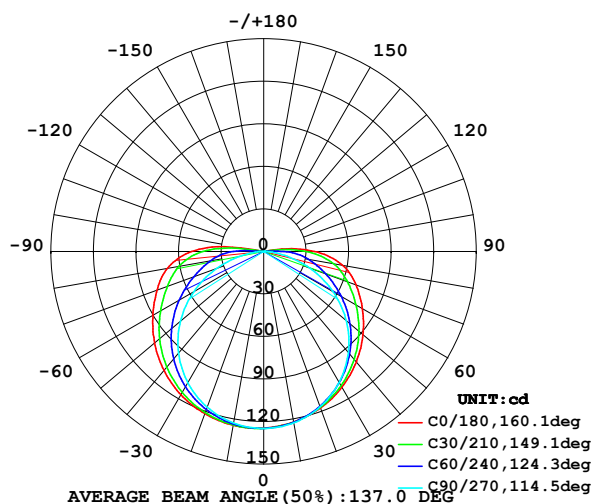


LUMINAIRE PHOTOMETRIC TEST REPORT

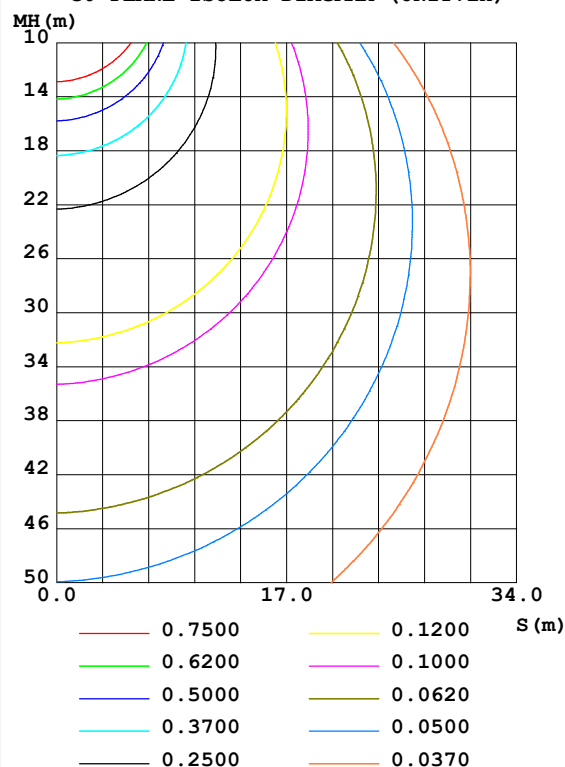
Test:U:12.00V I:0.4713A P:5.656W PF:1.000 Lamp Flux:481.375x1 lm		
NAME: LED Soft light bar	SUR.:1.0m*0.008m	SERIAL No.:WY-PG-2022052703
MFR.: LEDIA		

DATA OF LAMP		PHOTOMETRIC DATA Eff: 85.11 lm/W			
MODEL	HB-FOB08H27MP05-320D	I _{max} (cd)	125.1	S/MH (C0/180)	1.41
NOMINAL POWER (W)	6	LOR (%)	100.0	S/MH (C90/270)	1.27
RATED VOLTAGE (V)	12	TOTAL FLUX (lm)	481.38	η UP, DN (C0-180)	1.8, 47.9
NOMINAL FLUX (lm)	481.375	CIE CLASS	DIRECT	η UP, DN (C180-360)	1.9, 48.4
LAMPS INSIDE	1	η up (%)	3.7	CIBSE SHR NOM	1.50
TEST VOLTAGE (V)	12	η down (%)	96.3	CIBSE SHR MAX	1.55

LUMINOUS INTENSITY DISTRIBUTION DIAGRAM



C0 PLANE ISOLUX DIAGRAM (UNIT:lx)



C Range: 0 - 360DEG
C Interval: 15.0DEG
Test Speed: HIGH
Temperature: 24.7DEG
Operators: Lingxin Xie
Test Date: 2022-05-27

γ Range: 0 - 180DEG
γ Interval: 1.0DEG
Test System: EVERFINE GO-2000A_V1 SYSTEM V2.0.291
Humidity: 54.2%
Test Distance: 10.149m [K=1.0000]
Remarks:

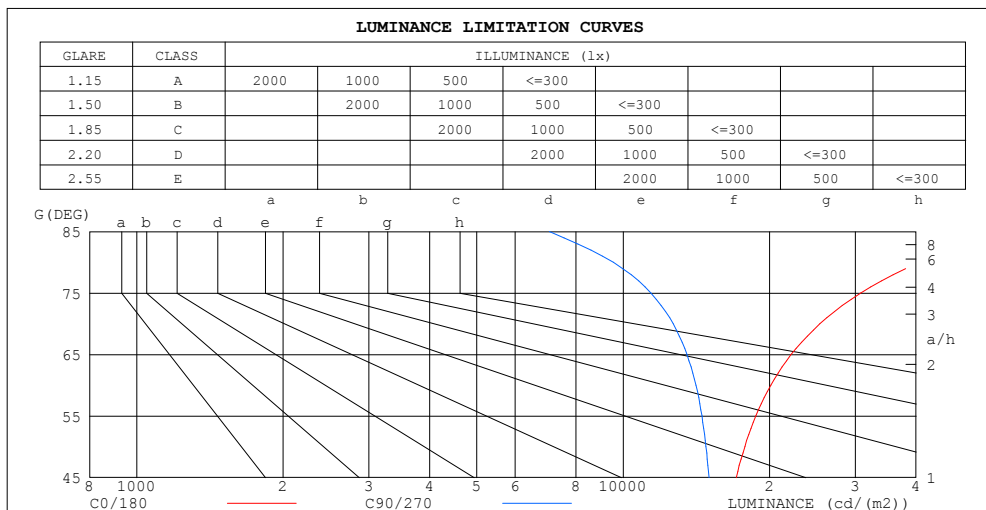
Checker: Jianfei Wu

Assessor: Lijian Jiang

ZONAL FLUX DIAGRAM AND LUMINANCE LIMITATION CURVES

ZONAL FLUX DIAGRAM:

γ	C0	C45	C90	C135	C180	C225	C270	C315	γ	Φ zone	Φ total	%lum, lamp
10	122.1	122.3	122.7	124.0	124.4	123.9	122.8	122.4	0- 10	11.83	11.83	2.46,2.46
20	117.5	116.6	116.6	119.9	121.6	119.8	116.8	116.8	10- 20	34.20	46.04	9.56,9.56
30	110.5	108.0	106.5	112.7	116.7	112.6	107.0	108.2	20- 30	52.89	98.93	20.6,20.6
40	101.8	96.95	93.03	102.9	109.5	102.7	93.42	97.08	30- 40	65.96	164.9	34.3,34.3
50	91.49	83.87	76.12	90.71	100.5	90.52	76.72	84.00	40- 50	72.18	237.1	49.2,49.2
60	80.43	69.67	56.43	77.22	90.27	76.94	57.04	69.71	50- 60	71.30	308.4	64.1,64.1
70	69.42	55.80	34.68	63.71	80.06	63.29	35.32	55.82	60- 70	64.29	372.7	77.4,77.4
80	56.54	42.46	13.27	51.28	68.96	50.84	13.79	42.63	70- 80	53.16	425.8	88.5,88.5
90	35.79	23.11	0.1899	33.66	50.80	33.18	0.0897	23.54	80- 90	37.87	463.7	96.3,96.3
100	7.042	0.5090	0.1088	0.7822	11.03	0.8272	0.1410	0.5701	90-100	15.27	478.9	99.5,99.5
110	0.4098	0.3459	0.1857	0.3015	0.3587	0.2819	0.2052	0.2882	100-110	0.6860	479.6	99.6,99.6
120	0.4098	0.4032	0.2819	0.3587	0.3906	0.2945	0.2883	0.3649	110-120	0.3209	480.0	99.7,99.7
130	0.4482	0.4483	0.3842	0.4164	0.4227	0.3905	0.3716	0.3906	120-130	0.3374	480.3	99.8,99.8
140	0.4931	0.4804	0.4161	0.4611	0.4612	0.3970	0.4418	0.4290	130-140	0.3298	480.6	99.8,99.8
150	0.5059	0.5316	0.4867	0.5187	0.5059	0.4867	0.4931	0.4931	140-150	0.2997	480.9	99.9,99.9
160	0.5891	0.5637	0.5058	0.5507	0.5442	0.4931	0.5315	0.4995	150-160	0.2383	481.2	100,100
170	0.5955	0.5955	0.5892	0.5892	0.5891	0.5763	0.5828	0.5828	160-170	0.1589	481.3	100,100
180	0.6020	0.6020	0.6084	0.6084	0.6084	0.6020	0.6084	0.6084	170-180	0.0568	481.4	100,100
DEG	LUMINOUS INTENSITY:cd									UNIT:lm		



LUMINANCE cd/(m2)		
G (DEG)	C0/180	C90/270
85	67822	7051
80	40703	9549
75	30789	11405
70	25370	12674
65	22139	13530
60	20107	14107
55	18732	14518
50	17793	14804
45	17087	15023

C Range: 0 - 360DEG
C Interval: 15.0DEG
Test Speed: HIGH
Temperature:24.7DEG
Operators:Lingxin Xie
Test Date:2022-05-27

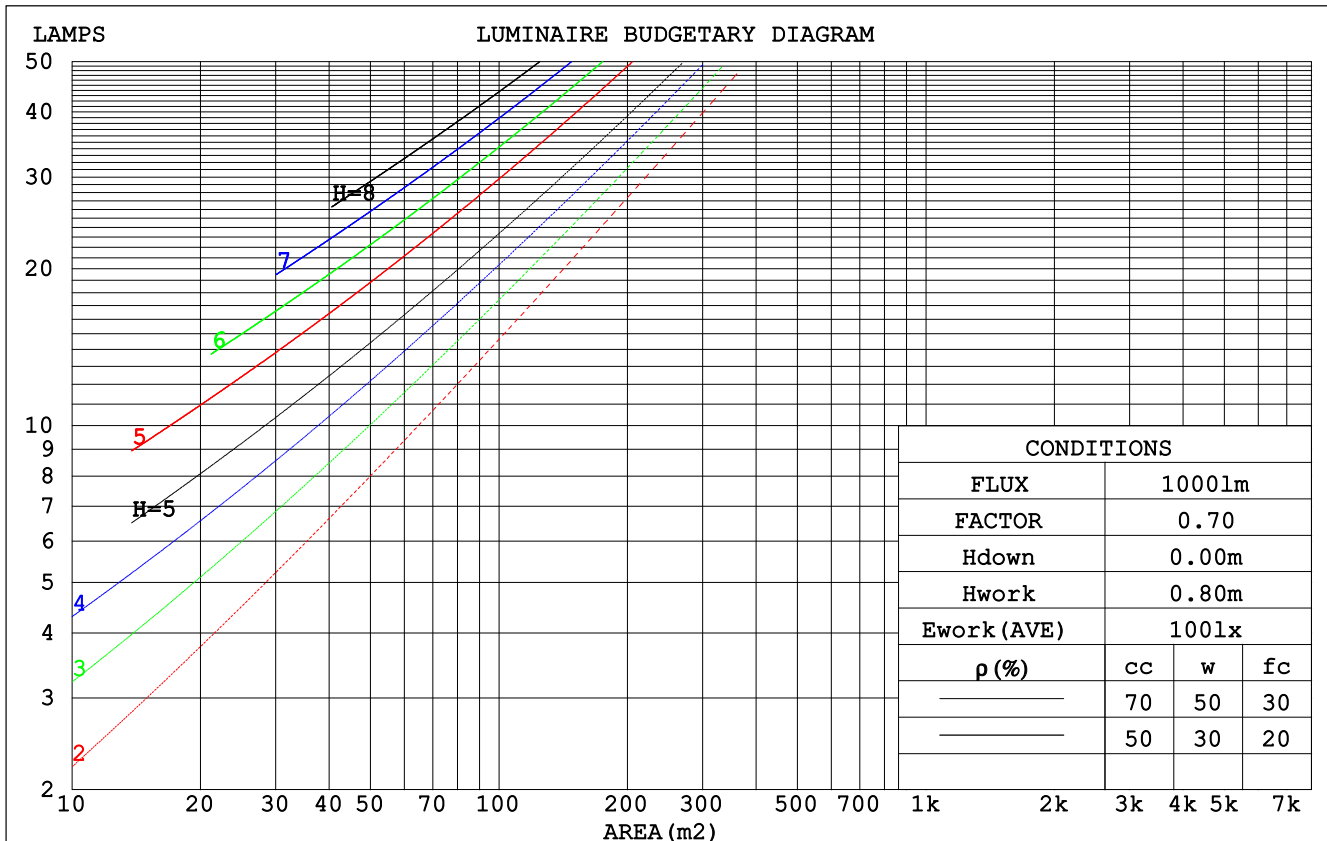
γ Range: 0 - 180DEG
 γ Interval: 1.0DEG
Test System:EVERFINE GO-2000A_V1 SYSTEM V2.0.291
Humidity:54.2%
Test Distance:10.149m [K=1.0000]
Remarks:

Checker: Jianfei Wu

Assessor: Lijian Jiang

CU AND LUMINAIRE BUDGETARY ESTIMATE DIAGRAM

pcc	80%			70%			50%			30%			10%			0
pw	50%	30%	10%	50%	30%	10%	50%	30%	10%	50%	30%	10%	50%	30%	10%	0
pfc	20%			20%			20%			20%			20%			0
RCR	RCR:Room Cavity Ratio						Coefficients of Utilization(CU)									
0.0	1.18	1.18	1.18	1.15	1.15	1.15	1.09	1.09	1.09	1.04	1.04	1.04	.99	.99	.99	.96
1.0	.98	.93	.88	.96	.91	.86	.91	.86	.83	.86	.83	.79	.82	.79	.76	.74
2.0	.84	.76	.69	.82	.74	.68	.77	.71	.66	.73	.68	.64	.70	.65	.62	.59
3.0	.73	.63	.56	.71	.62	.55	.67	.60	.54	.64	.58	.52	.61	.55	.51	.48
4.0	.64	.54	.47	.62	.53	.46	.59	.51	.45	.56	.49	.44	.54	.48	.43	.40
5.0	.57	.47	.40	.55	.46	.39	.53	.45	.38	.50	.43	.38	.48	.42	.37	.34
6.0	.51	.41	.34	.50	.41	.34	.47	.39	.33	.45	.38	.33	.43	.37	.32	.30
7.0	.46	.37	.30	.45	.36	.30	.43	.35	.29	.41	.34	.29	.39	.33	.28	.26
8.0	.42	.33	.27	.41	.32	.26	.39	.31	.26	.38	.31	.26	.36	.30	.25	.23
9.0	.38	.30	.24	.37	.29	.24	.36	.29	.23	.35	.28	.23	.33	.27	.23	.21
10.0	.35	.27	.21	.35	.27	.21	.33	.26	.21	.32	.25	.21	.31	.25	.20	.19



C Range: 0 - 360DEG
 C Interval: 15.0DEG
 Test Speed: HIGH
 Temperature: 24.7DEG
 Operators: Lingxin Xie
 Test Date: 2022-05-27

γ Range: 0 - 180DEG
 γ Interval: 1.0DEG
 Test System: EVERFINE GO-2000A_V1 SYSTEM V2.0.291
 Humidity: 54.2%
 Test Distance: 10.149m [K=1.0000]
 Remarks:

Checker: Jianfei Wu

Assessor: Lijian Jiang

WEC AND CCEC

pcc	80%			70%			50%			30%			10%			0
pw	50%	30%	10%	50%	30%	10%	50%	30%	10%	50%	30%	10%	50%	30%	10%	0
pfc	20%			20%			20%			20%			20%			0
RCR	RCR:Room Cavity Ratio						Wall Exitance Coefficients (WEC)									
0.0																
1.0	.398	.226	.072	.389	.222	.071	.373	.214	.068	.359	.207	.066	.345	.200	.065	
2.0	.345	.189	.058	.338	.186	.057	.323	.180	.056	.310	.174	.055	.298	.169	.053	
3.0	.306	.163	.049	.300	.161	.048	.287	.156	.047	.276	.151	.046	.265	.147	.045	
4.0	.276	.143	.042	.270	.141	.042	.258	.137	.041	.248	.133	.040	.238	.129	.039	
5.0	.250	.127	.037	.245	.126	.037	.235	.122	.036	.225	.119	.035	.217	.116	.035	
6.0	.229	.115	.033	.224	.113	.033	.215	.110	.032	.207	.107	.032	.199	.105	.031	
7.0	.211	.104	.030	.207	.103	.029	.199	.100	.029	.191	.098	.028	.184	.096	.028	
8.0	.195	.096	.027	.192	.094	.027	.184	.092	.026	.178	.090	.026	.171	.088	.026	
9.0	.182	.088	.025	.179	.087	.024	.172	.085	.024	.166	.083	.024	.160	.081	.023	
10.0	.170	.082	.023	.167	.081	.023	.161	.079	.022	.156	.077	.022	.150	.076	.022	

pcc	80%			70%			50%			30%			10%			0
pw	50%	30%	10%	50%	30%	10%	50%	30%	10%	50%	30%	10%	50%	30%	10%	0
pfc	20%			20%			20%			20%			20%			0
RCR	RCR:Room Cavity Ratio						Ceiling Cavity Exitance Coefficients (CCEC)									
0.0	.218	.218	.218	.187	.187	.187	.127	.127	.127	.073	.073	.073	.023	.023	.023	
1.0	.215	.184	.156	.184	.158	.134	.126	.108	.093	.072	.063	.054	.023	.020	.017	
2.0	.208	.160	.120	.178	.138	.104	.122	.095	.072	.070	.055	.042	.023	.018	.014	
3.0	.200	.143	.098	.172	.123	.085	.118	.086	.059	.068	.050	.035	.022	.016	.011	
4.0	.192	.130	.083	.165	.113	.072	.113	.078	.051	.066	.046	.030	.021	.015	.010	
5.0	.184	.120	.073	.158	.104	.064	.109	.073	.045	.063	.043	.027	.020	.014	.009	
6.0	.176	.112	.066	.152	.097	.057	.105	.068	.041	.061	.040	.024	.020	.013	.008	
7.0	.169	.105	.061	.145	.091	.053	.100	.064	.037	.058	.038	.022	.019	.012	.007	
8.0	.162	.099	.056	.139	.086	.049	.097	.061	.035	.056	.036	.021	.018	.012	.007	
9.0	.156	.095	.053	.134	.082	.047	.093	.058	.033	.054	.034	.020	.018	.011	.007	
10.0	.149	.090	.051	.129	.078	.044	.089	.055	.032	.052	.033	.019	.017	.011	.006	

C Range: 0 - 360DEG
 C Interval: 15.0DEG
 Test Speed: HIGH
 Temperature:24.7DEG
 Operators:Lingxin Xie
 Test Date:2022-05-27

γ Range: 0 - 180DEG
 γ Interval: 1.0DEG
 Test System:EVERFINE GO-2000A_V1 SYSTEM V2.0.291
 Humidity:54.2%
 Test Distance:10.149m [K=1.0000]
 Remarks:

Checker: Jianfei Wu

Assessor: Lijian Jiang

UGR(Unified Glare Rating) Table

ceiling/cavity	0.7	0.7	0.5	0.5	0.3	0.7	0.7	0.5	0.5	0.3
walls	0.5	0.3	0.5	0.3	0.3	0.5	0.3	0.5	0.3	0.3
working plane	0.2	0.2	0.2	0.2	0.2	0.2	0.2	0.2	0.2	0.2
Room dimensions	Viewed crosswise					Viewed endwise				
x = 2H y = 2H	23.0	24.6	23.3	24.8	25.1	21.4	23.0	21.8	23.3	23.6
3H	25.6	27.1	25.9	27.4	27.7	23.0	24.5	23.3	24.8	25.1
4H	27.0	28.4	27.4	28.8	29.1	23.6	25.0	24.0	25.3	25.7
6H	28.5	29.9	28.9	30.2	30.6	24.0	25.4	24.4	25.7	26.1
8H	29.4	30.7	29.8	31.0	31.4	24.1	25.4	24.5	25.8	26.2
12H	30.2	31.5	30.6	31.9	32.3	24.2	25.5	24.6	25.8	26.2
4H 2H	23.6	25.0	24.0	25.3	25.7	22.5	23.9	22.8	24.2	24.6
3H	26.4	27.7	26.9	28.1	28.5	24.3	25.5	24.7	25.9	26.3
4H	28.1	29.2	28.5	29.6	30.1	25.1	26.2	25.5	26.6	27.1
6H	29.8	30.9	30.3	31.3	31.8	25.7	26.8	26.2	27.2	27.6
8H	30.8	31.8	31.3	32.2	32.7	25.9	26.9	26.4	27.3	27.8
12H	31.8	32.7	32.3	33.2	33.7	26.0	27.0	26.5	27.4	27.9
8H 4H	28.5	29.5	28.9	29.9	30.4	26.1	27.1	26.5	27.5	28.0
6H	30.5	31.4	31.0	31.8	32.4	27.1	27.9	27.6	28.4	28.9
8H	31.7	32.4	32.2	32.9	33.5	27.5	28.2	28.0	28.7	29.3
12H	32.9	33.6	33.5	34.1	34.7	27.8	28.5	28.3	29.0	29.5
12H 4H	28.5	29.4	29.0	29.9	30.4	26.4	27.3	26.9	27.7	28.2
6H	30.7	31.4	31.2	31.9	32.4	27.6	28.3	28.1	28.8	29.4
8H	31.9	32.6	32.4	33.1	33.6	28.2	28.8	28.7	29.3	29.9
Variations with the observer position at spacings:										
S = 1.0H	+ 0.1 / - 0.1					+ 0.1 / - 0.1				
1.5H	+ 0.2 / - 0.3					+ 0.2 / - 0.2				
2.0H	+ 0.2 / - 0.4					+ 0.2 / - 0.3				

CIE Pub.117 Corrected 481.4 lm Total Lamp Luminous Flux.(8log(F/F0) = -2.5)

C Range: 0 - 360DEG
 C Interval: 15.0DEG
 Test Speed: HIGH
 Temperature:24.7DEG
 Operators:Lingxin Xie
 Test Date:2022-05-27

Checker: Jianfei Wu

γ Range: 0 - 180DEG
 γ Interval: 1.0DEG
 Test System:EVERFINE GO-2000A_V1 SYSTEM V2.0.291
 Humidity:54.2%
 Test Distance:10.149m [K=1.0000]
 Remarks:

Assessor: Lijian Jiang

UTILIZATION FACTORS TABLE

REFLECTANCE										
Ceiling	0.8	0.8	0.8	0.7	0.7	0.7	0.5	0.5	0.5	0
Walls	0.7	0.5	0.3	0.7	0.5	0.3	0.7	0.5	0.3	0
Working plane	0.2	0.2	0.2	0.2	0.2	0.2	0.2	0.2	0.2	0
ROOM INDEX	UTILIZATION FACTORS (PERCENT) $k(RI) \times RCR = 5$									
$k = 0.60$	52	39	32	51	39	32	50	38	32	25
0.80	61	48	40	60	48	40	58	47	40	32
1.00	69	56	48	68	56	48	65	57	47	39
1.25	76	64	55	74	63	55	71	61	54	46
1.50	81	69	61	79	68	60	76	66	59	50
2.00	88	78	70	86	76	69	82	74	67	58
2.50	93	83	75	90	81	74	86	78	72	62
3.00	96	87	80	94	86	79	89	82	77	67
4.00	101	93	87	98	91	86	93	88	83	72
5.00	104	97	92	101	95	90	96	91	87	76
ROOM INDEX	UF (total)									Direct
According to DIN EN 13032-2 2004			Suspended					SHRNOM = 1.25		

C Range: 0 - 360DEG
 C Interval: 15.0DEG
 Test Speed: HIGH
 Temperature: 24.7DEG
 Operators: Lingxin Xie
 Test Date: 2022-05-27

Checker: Jianfei Wu

γ Range: 0 - 180DEG
 γ Interval: 1.0DEG
 Test System: EVERFINE GO-2000A_V1 SYSTEM V2.0.291
 Humidity: 54.2%
 Test Distance: 10.149m [K=1.0000]
 Remarks:

Assessor: Lijian Jiang

ISOCANDELA DIAGRAM

Conical surface Flux(90deg):

200.65 lm

%lum = 41.7%

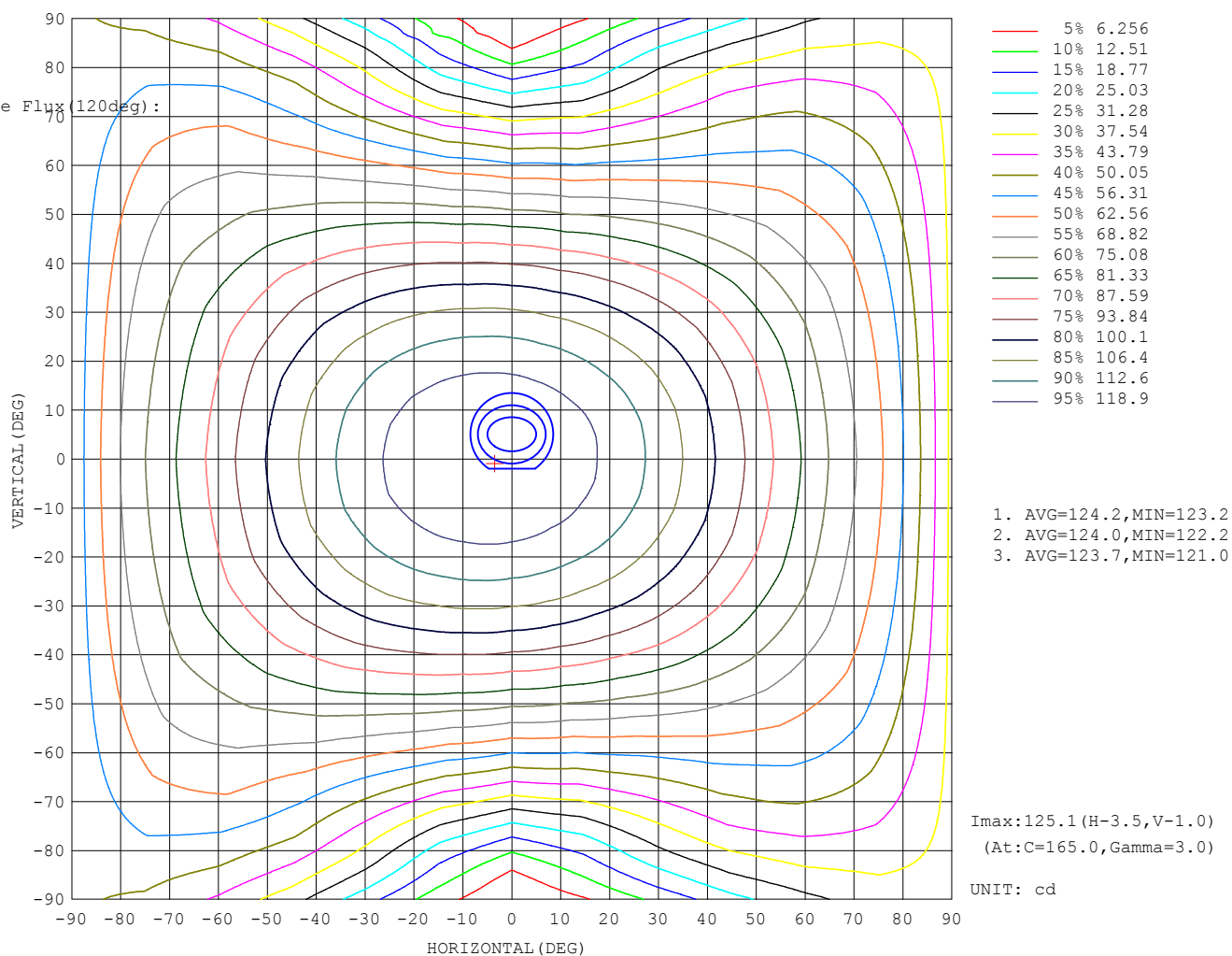
%lamp = 41.7%

Conical surface Flux(120deg):

308.36 lm

%lum = 64.1%

%lamp = 64.1%



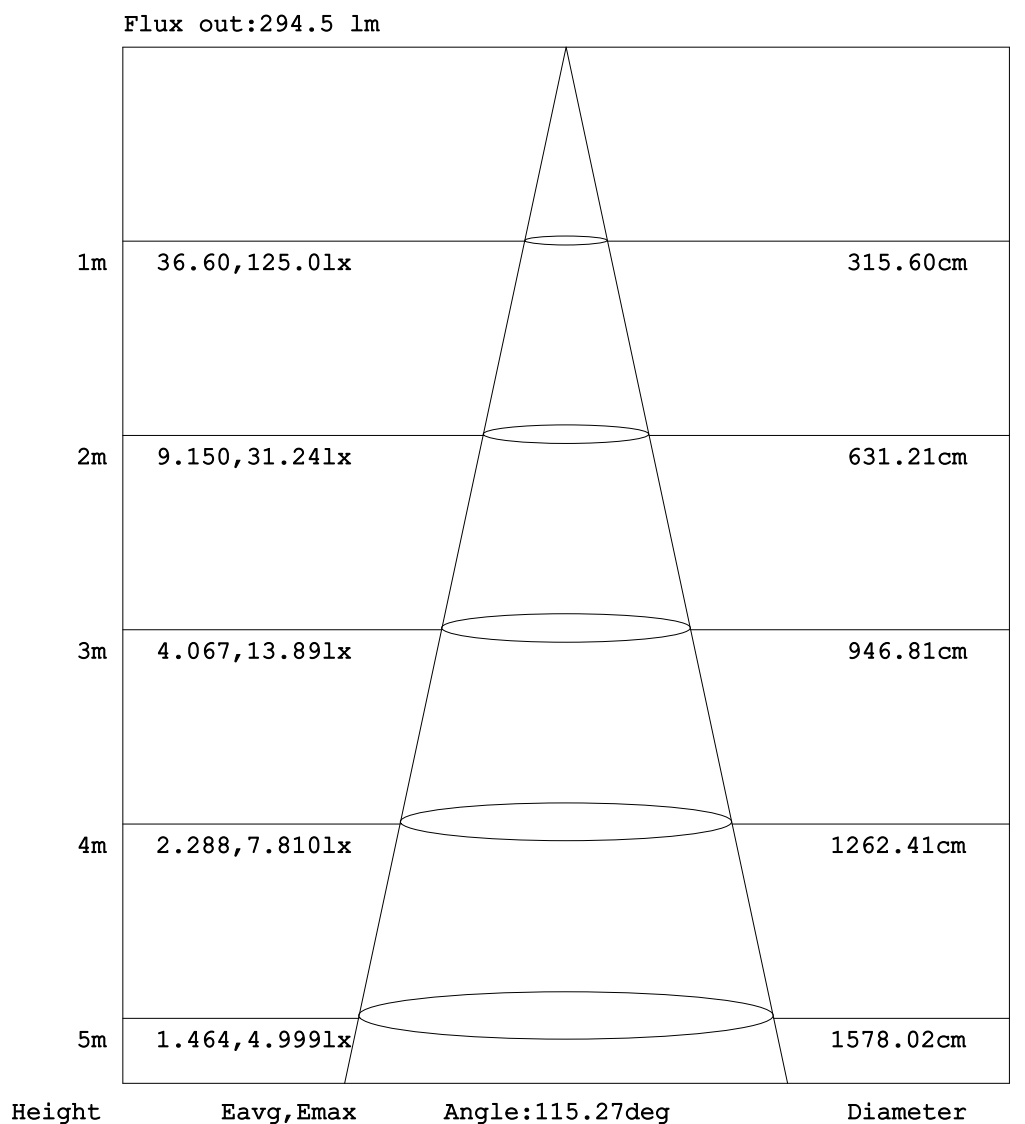
C Range: 0 - 360DEG
C Interval: 15.0DEG
Test Speed: HIGH
Temperature: 24.7DEG
Operators: Lingxin Xie
Test Date: 2022-05-27

γ Range: 0 - 180DEG
 γ Interval: 1.0DEG
Test System: EVERFINE GO-2000A_V1 SYSTEM V2.0.291
Humidity: 54.2%
Test Distance: 10.149m [K=1.0000]
Remarks:

Checker: Jianfei Wu

Assessor: Lijian Jiang

AAI Figure



Note:The Curves indicate the illuminated area and the average illumination when the luminaire is at different distance.

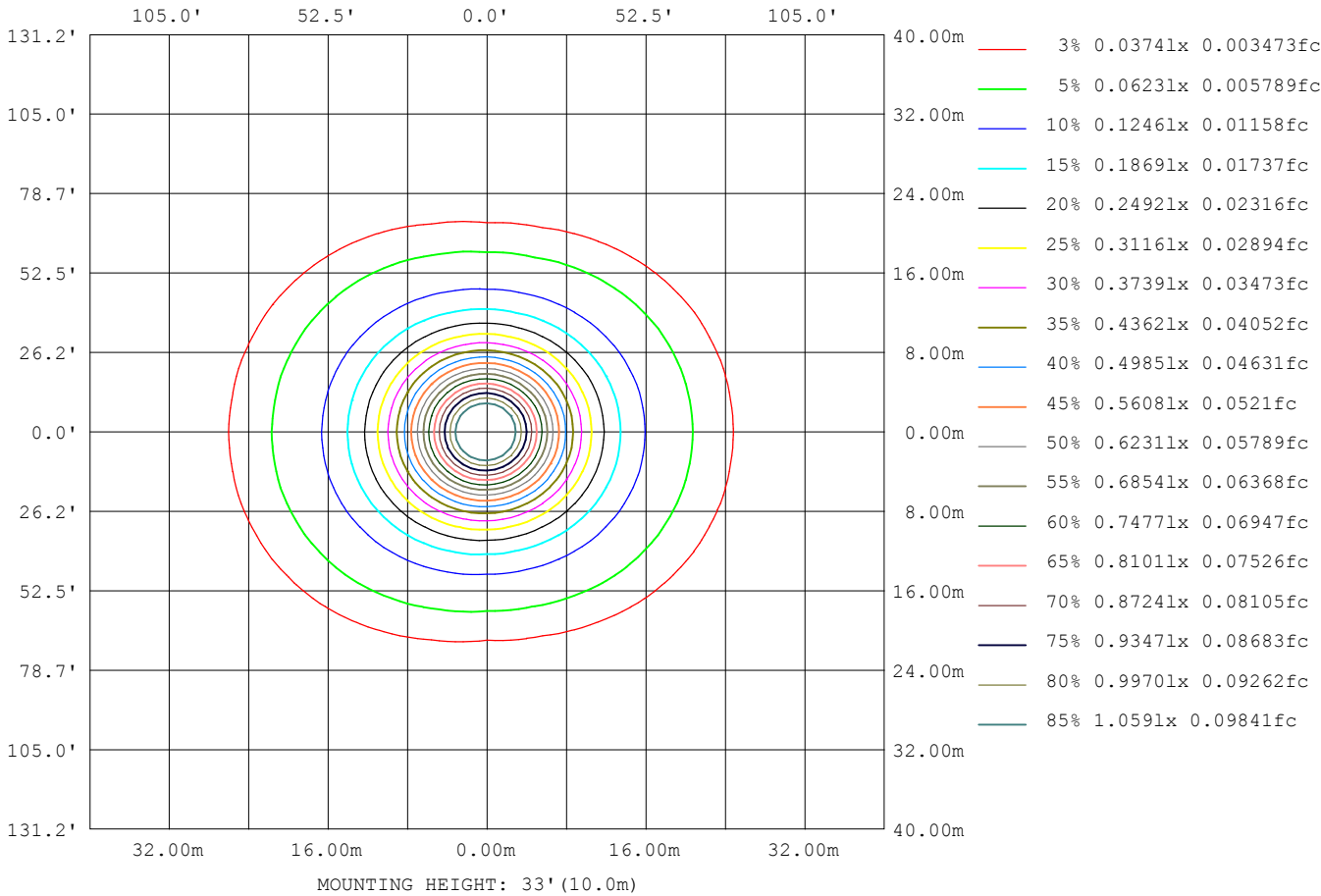
C Range: 0 - 360DEG
C Interval: 15.0DEG
Test Speed: HIGH
Temperature:24.7DEG
Operators:Lingxin Xie
Test Date:2022-05-27

γ Range: 0 - 180DEG
 γ Interval: 1.0DEG
Test System:EVERFINE GO-2000A_V1 SYSTEM V2.0.291
Humidity:54.2%
Test Distance:10.149m [K=1.0000]
Remarks:

Checker: Jianfei Wu

Assessor: Lijian Jiang

ISOLUX DIAGRAM



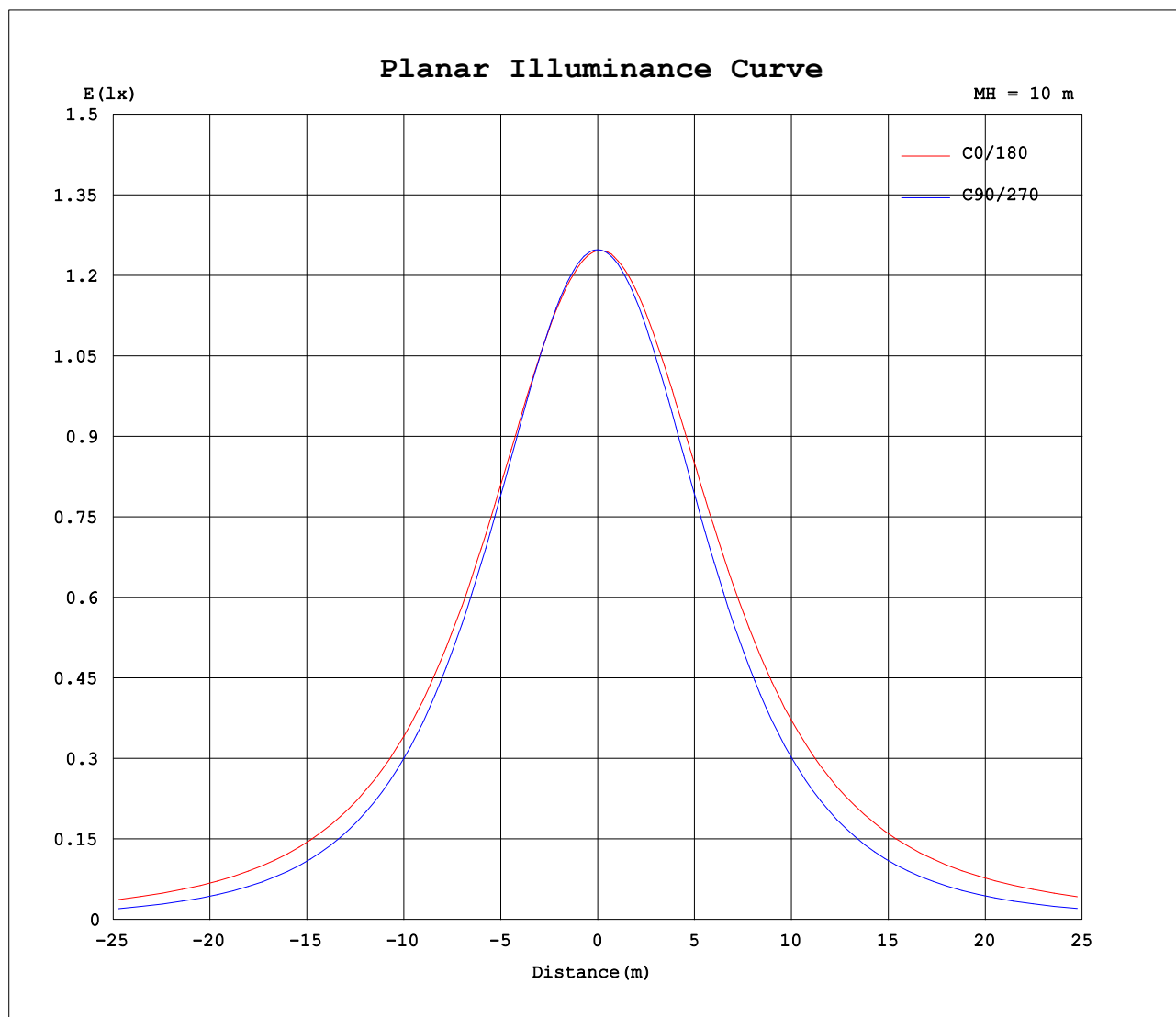
C Range: 0 - 360DEG
C Interval: 15.0DEG
Test Speed: HIGH
Temperature:24.7DEG
Operators:Lingxin Xie
Test Date:2022-05-27

Checker: Jianfei Wu

γ Range: 0 - 180DEG
γ Interval: 1.0DEG
Test System:EVERFINE GO-2000A_V1 SYSTEM V2.0.291
Humidity:54.2%
Test Distance:10.149m [K=1.0000]
Remarks:

Assessor: Lijian Jiang

Planar Illuminance Curve



C Range: 0 - 360DEG
C Interval: 15.0DEG
Test Speed: HIGH
Temperature: 24.7DEG
Operators: Lingxin Xie
Test Date: 2022-05-27

Checker: Jianfei Wu

γ Range: 0 - 180DEG
 γ Interval: 1.0DEG
Test System: EVERFINE GO-2000A_V1 SYSTEM V2.0.291
Humidity: 54.2%
Test Distance: 10.149m [K=1.0000]
Remarks:

Assessor: Lijian Jiang

LUMINOUS DISTRIBUTION INTENSITY DATA

Table--1

UNIT: cd

C (DEG) γ (DEG)	0	15	30	45	60	75	90	105	120	135	150	165	180	195	210	225	240	255	270
0	125	125	125	125	125	125	125	125	125	125	125	125	125	125	125	125	125	125	125
5	124	124	124	124	124	124	124	124	125	125	125	125	125	125	125	125	125	125	124
10	122	122	122	122	122	122	123	123	124	124	124	125	124	124	124	124	124	123	123
15	120	120	120	120	120	120	120	121	121	122	123	124	123	123	123	122	122	121	120
20	117	117	117	117	116	116	117	117	119	120	121	122	122	122	121	120	119	118	117
25	114	114	113	113	112	112	112	113	115	117	118	120	120	119	118	117	115	113	112
30	110	110	109	108	107	106	107	108	110	113	115	117	117	116	115	113	110	108	107
35	106	106	105	103	101	100.0	100	102	105	108	111	113	113	113	111	108	105	102	101
40	102	101	99.4	97.0	94.4	92.9	93.0	95.2	98.6	103	106	109	109	109	106	103	98.9	95.3	93.4
45	96.7	96.1	93.7	90.6	87.2	85.1	85.0	87.6	91.9	97.1	101	104	105	104	101	96.9	92.1	87.7	85.5
50	91.5	90.6	87.7	83.9	79.5	76.6	76.1	79.3	84.6	90.7	95.9	99.6	100	99.2	95.8	90.5	84.8	79.4	76.7
55	86.0	84.9	81.4	76.8	71.4	67.5	66.6	70.4	76.7	84.1	90.2	94.4	95.5	94.1	90.0	83.8	77.0	70.5	67.2
60	80.4	79.2	75.3	69.7	63.1	58.0	56.4	61.0	68.6	77.2	84.3	89.1	90.3	88.6	84.0	76.9	68.9	61.1	57.0
65	74.9	73.6	69.1	62.6	54.8	48.1	45.7	51.2	60.4	70.4	78.4	83.7	85.1	83.3	78.1	70.0	60.6	51.3	46.4
70	69.4	67.9	63.0	55.8	46.7	38.3	34.7	41.2	52.3	63.7	72.6	78.4	80.1	77.9	72.3	63.3	52.5	41.3	35.3
75	63.8	62.2	57.0	49.2	39.2	28.9	23.6	31.7	44.8	57.4	67.0	73.3	75.0	72.8	66.7	57.0	45.0	31.8	24.2
80	56.5	55.0	50.0	42.5	32.0	20.5	13.3	23.1	37.9	51.3	61.0	67.2	69.0	66.8	60.8	50.8	38.0	23.2	13.8
85	47.3	45.7	40.9	33.7	24.1	13.4	4.92	16.0	30.7	43.4	53.0	59.2	61.0	58.8	52.9	43.0	30.8	16.1	4.44
90	35.8	34.5	29.7	23.1	14.3	5.70	0.19	8.63	21.4	33.7	42.9	49.1	50.8	48.5	42.9	33.2	21.5	8.39	0.09
95	23.0	21.6	16.7	10.2	2.79	0.16	0.10	0.14	4.53	18.1	28.1	34.8	36.5	34.2	28.4	17.7	5.10	0.21	0.10
100	7.04	6.06	2.84	0.51	0.24	0.19	0.11	0.17	0.23	0.78	3.86	9.24	11.0	8.42	3.97	0.83	0.20	0.13	0.14
105	0.55	0.42	0.36	0.33	0.24	0.23	0.17	0.20	0.22	0.29	0.35	0.46	0.47	0.45	0.36	0.30	0.22	0.14	0.17
110	0.41	0.40	0.38	0.35	0.28	0.26	0.19	0.24	0.22	0.30	0.34	0.38	0.36	0.35	0.33	0.28	0.24	0.19	0.21
115	0.41	0.42	0.38	0.37	0.29	0.31	0.26	0.28	0.28	0.34	0.35	0.38	0.38	0.36	0.33	0.28	0.26	0.20	0.24
120	0.41	0.44	0.40	0.40	0.35	0.33	0.28	0.33	0.28	0.36	0.38	0.41	0.39	0.38	0.37	0.29	0.30	0.27	0.29
125	0.42	0.45	0.40	0.42	0.40	0.37	0.30	0.36	0.34	0.38	0.38	0.42	0.41	0.39	0.38	0.31	0.34	0.29	0.34
130	0.45	0.47	0.42	0.45	0.39	0.41	0.38	0.39	0.38	0.42	0.38	0.45	0.42	0.40	0.40	0.39	0.37	0.31	0.37
135	0.49	0.49	0.46	0.47	0.41	0.43	0.38	0.43	0.38	0.45	0.42	0.46	0.44	0.40	0.43	0.38	0.40	0.38	0.41
140	0.49	0.51	0.49	0.48	0.44	0.46	0.42	0.45	0.41	0.46	0.44	0.48	0.46	0.42	0.45	0.40	0.43	0.39	0.44
145	0.51	0.53	0.49	0.51	0.51	0.49	0.47	0.49	0.47	0.49	0.49	0.50	0.48	0.46	0.48	0.42	0.47	0.41	0.46
150	0.51	0.55	0.49	0.53	0.50	0.51	0.49	0.51	0.49	0.52	0.50	0.53	0.51	0.49	0.49	0.49	0.49	0.48	0.49
155	0.53	0.56	0.51	0.54	0.50	0.54	0.49	0.54	0.49	0.53	0.50	0.53	0.53	0.49	0.51	0.49	0.51	0.49	0.53
160	0.59	0.58	0.56	0.56	0.51	0.55	0.51	0.55	0.51	0.55	0.51	0.56	0.54	0.49	0.53	0.49	0.53	0.49	0.53
165	0.59	0.60	0.59	0.58	0.58	0.58	0.58	0.58	0.58	0.58	0.56	0.58	0.56	0.54	0.55	0.51	0.54	0.51	0.56
170	0.60	0.59	0.60	0.60	0.60	0.59	0.59	0.59	0.59	0.59	0.59	0.59	0.59	0.58	0.58	0.58	0.58	0.58	0.58
175	0.60	0.61	0.61	0.60	0.60	0.61	0.60	0.60	0.61	0.60	0.60	0.61	0.60	0.60	0.60	0.59	0.59	0.60	0.61
180	0.60	0.61	0.61	0.60	0.60	0.60	0.61	0.61	0.61	0.61	0.61	0.61	0.61	0.61	0.60	0.60	0.61	0.61	0.61

C Range: 0 - 360DEG
C Interval: 15.0DEG
Test Speed: HIGH
Temperature: 24.7DEG
Operators: Lingxin Xie
Test Date: 2022-05-27

γ Range: 0 - 180DEG
γ Interval: 1.0DEG
Test System: EVERFINE GO-2000A_V1 SYSTEM V2.0.291
Humidity: 54.2%
Test Distance: 10.149m [K=1.0000]
Remarks:

Checker: Jianfei Wu

Assessor: Lijian Jiang

LUMINOUS DISTRIBUTION INTENSITY DATA

Table--2

UNIT: cd

C (DEG) γ (DEG)	285	300	315	330	345													
0	125	125	125	125	125													
5	124	124	124	124	124													
10	123	122	122	122	122													
15	120	120	120	120	120													
20	116	116	117	117	118													
25	112	112	113	114	114													
30	106	107	108	110	110													
35	100	101	103	105	106													
40	93.1	94.8	97.1	99.7	101													
45	85.3	87.6	90.7	94.0	96.1													
50	76.8	80.0	84.0	88.0	90.6													
55	67.7	71.9	76.9	81.8	84.9													
60	58.1	63.6	69.7	75.5	79.2													
65	48.3	55.2	62.6	69.4	73.5													
70	38.4	47.0	55.8	63.3	67.8													
75	29.0	39.5	49.3	57.2	62.1													
80	20.5	32.5	42.6	50.4	55.1													
85	13.4	24.8	33.9	41.4	45.8													
90	5.91	15.2	23.5	30.5	34.5													
95	0.15	3.37	10.9	17.9	21.9													
100	0.14	0.21	0.57	3.34	6.15													
105	0.17	0.25	0.28	0.33	0.50													
110	0.19	0.28	0.29	0.35	0.37													
115	0.24	0.31	0.30	0.37	0.38													
120	0.29	0.35	0.36	0.40	0.39													
125	0.30	0.37	0.40	0.43	0.39													
130	0.38	0.40	0.39	0.45	0.40													
135	0.38	0.44	0.39	0.45	0.44													
140	0.40	0.45	0.43	0.49	0.49													
145	0.44	0.47	0.48	0.51	0.50													
150	0.49	0.50	0.49	0.52	0.50													
155	0.50	0.53	0.49	0.54	0.50													
160	0.50	0.54	0.50	0.55	0.51													
165	0.52	0.57	0.58	0.58	0.58													
170	0.58	0.59	0.58	0.58	0.60													
175	0.59	0.60	0.60	0.59	0.61													
180	0.61	0.61	0.61	0.60	0.60													

C Range: 0 - 360DEG
 C Interval: 15.0DEG
 Test Speed: HIGH
 Temperature: 24.7DEG
 Operators: Lingxin Xie
 Test Date: 2022-05-27

γ Range: 0 - 180DEG
 γ Interval: 1.0DEG
 Test System: EVERFINE GO-2000A_V1 SYSTEM V2.0.291
 Humidity: 54.2%
 Test Distance: 10.149m [K=1.0000]
 Remarks:

Checker: Jianfei Wu

Assessor: Lijian Jiang