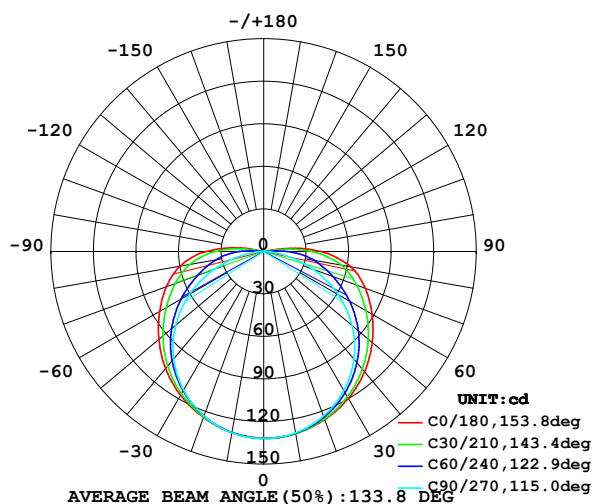


## LUMINAIRE PHOTOMETRIC TEST REPORT

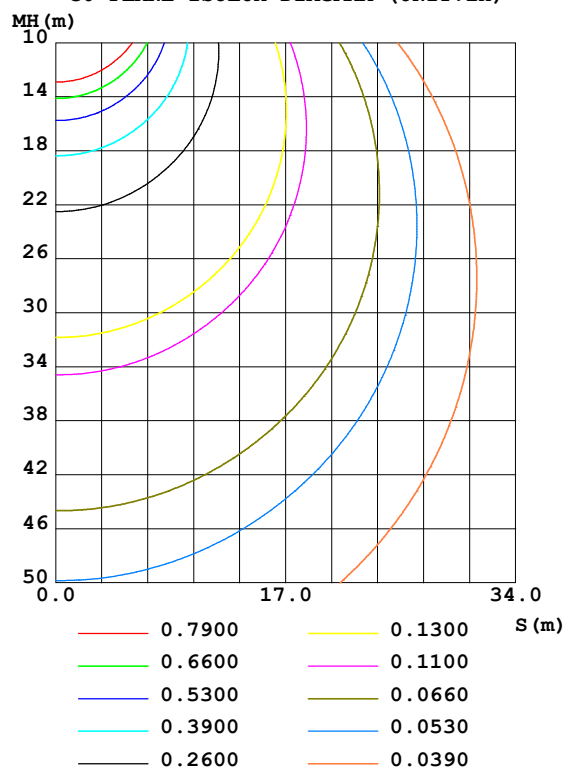
Test:U:24.00V I:0.2204A P:5.290W PF:1.000 Lamp Flux:494.283x1 lm		
NAME: LED Soft light bar	SUR.:1.0m*0.008m	SERIAL No.:WY-PG-2022052507
MFR.: LEDIA		

DATA OF LAMP		PHOTOMETRIC DATA Eff: 93.44 lm/W			
MODEL	EKF5205COB	Imax(cd)	132.0	S/MH(C0/180)	1.33
NOMINAL POWER(W)	5.5	LOR(%)	100.0	S/MH(C90/270)	1.27
RATED VOLTAGE(V)	24	TOTAL FLUX(lm)	494.28	$\eta$ UP,DN(C0-180)	1.7,48.5
NOMINAL FLUX(lm)	494.283	CIE CLASS	DIRECT	$\eta$ UP,DN(C180-360)	1.7,48.1
LAMPS INSIDE	1	$\eta$ up(%)	3.4	CIBSE SHR NOM	1.50
TEST VOLTAGE(V)	24	$\eta$ down(%)	96.6	CIBSE SHR MAX	1.55

LUMINOUS INTENSITY DISTRIBUTION DIAGRAM



C0 PLANE ISOLUX DIAGRAM (UNIT:lx)



C Range: 0 - 360DEG  
C Interval: 15.0DEG  
Test Speed: HIGH  
Temperature: 24.7DEG  
Operators: Lingxin Xie  
Test Date: 2022-05-27

$\gamma$  Range: 0 - 180DEG  
 $\gamma$  Interval: 1.0DEG  
Test System: EVERFINE GO-2000A\_V1 SYSTEM V2.0.291  
Humidity: 54.2%  
Test Distance: 10.149m [K=1.0000]  
Remarks:

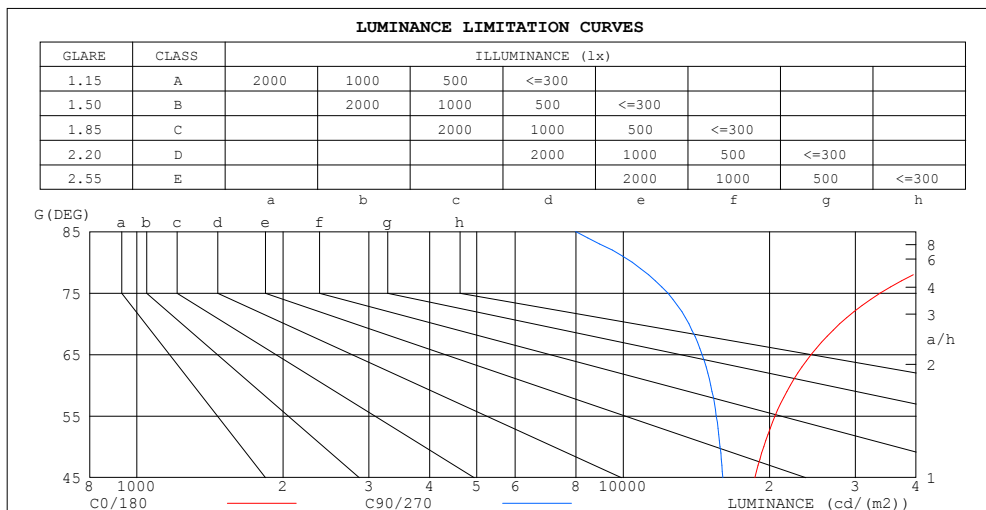
Checker: Jianfei Wu

Assessor: Lijian Jiang

### ZONAL FLUX DIAGRAM AND LUMINANCE LIMITATION CURVES

#### ZONAL FLUX DIAGRAM:

$\gamma$	C0	C45	C90	C135	C180	C225	C270	C315	$\gamma$	$\Phi$ zone	$\Phi$ total	%lum, lamp
10	130.4	130.3	129.9	129.7	129.6	129.6	129.9	130.1	0- 10	12.50	12.50	2.53,2.53
20	126.1	125.1	123.6	123.9	124.5	123.7	123.4	124.8	10- 20	36.06	48.56	9.82,9.82
30	119.6	116.7	113.3	115.0	117.2	114.6	113.0	116.2	20- 30	55.58	104.1	21.1,21.1
40	110.7	105.6	99.08	103.4	107.7	102.8	98.81	105.0	30- 40	69.06	173.2	35,35
50	100.0	92.13	81.35	89.38	96.55	88.81	81.07	91.40	40- 50	75.19	248.4	50.3,50.3
60	88.23	77.13	60.57	74.20	84.72	73.55	60.23	76.26	50- 60	73.72	322.1	65.2,65.2
70	76.30	62.06	37.36	59.44	73.05	58.79	37.25	61.12	60- 70	65.75	387.8	78.5,78.5
80	62.23	47.30	14.51	45.11	59.80	44.63	14.50	46.75	70- 80	53.29	441.1	89.2,89.2
90	40.19	26.28	0.2349	26.75	40.59	26.26	0.0834	26.01	80- 90	36.41	477.5	96.6,96.6
100	5.384	0.3136	0.1025	1.288	13.00	1.204	0.1410	0.3118	90-100	14.17	491.7	99.5,99.5
110	0.3860	0.3328	0.1920	0.3265	0.4480	0.3009	0.2179	0.2953	100-110	0.7570	492.5	99.6,99.6
120	0.3958	0.3817	0.2971	0.3844	0.3971	0.3180	0.3012	0.3139	110-120	0.3261	492.8	99.7,99.7
130	0.4665	0.4227	0.3715	0.4292	0.4485	0.3844	0.3907	0.3810	120-130	0.3425	493.1	99.8,99.8
140	0.4922	0.4934	0.4739	0.4996	0.5060	0.4802	0.4611	0.4866	130-140	0.3455	493.5	99.8,99.8
150	0.5138	0.5443	0.5151	0.5419	0.5317	0.5301	0.5250	0.5054	140-150	0.3183	493.8	99.9,99.9
160	0.5911	0.5954	0.5951	0.5955	0.5955	0.5634	0.5698	0.5763	150-160	0.2535	494.1	100,100
170	0.6046	0.6083	0.6041	0.6034	0.6084	0.6028	0.6147	0.5983	160-170	0.1690	494.2	100,100
180	0.6084	0.6020	0.6020	0.6084	0.6084	0.6084	0.6020	0.6020	170-180	0.0577	494.3	100,100
DEG	LUMINOUS INTENSITY:cd									UNIT:lm		



LUMINANCE cd/(m2)		
G (DEG)	C0/180	C90/270
85	74598	7983
80	44798	10447
75	33771	12353
70	27884	13656
65	24348	14536
60	22057	15142
55	20521	15536
50	19447	15820
45	18661	16026

C Range: 0 - 360DEG  
C Interval: 15.0DEG  
Test Speed: HIGH  
Temperature:24.7DEG  
Operators:Lingxin Xie  
Test Date:2022-05-27

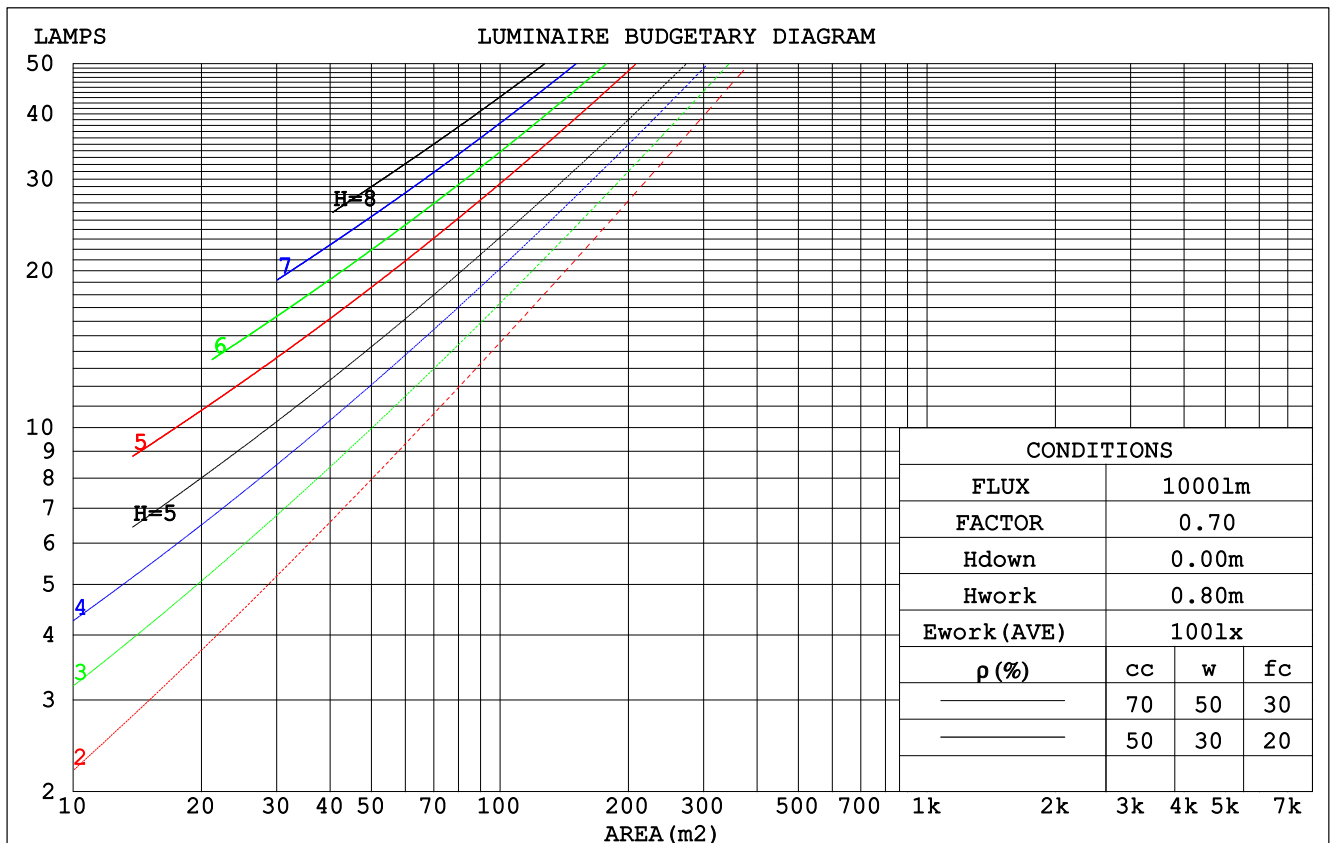
$\gamma$  Range: 0 - 180DEG  
 $\gamma$  Interval: 1.0DEG  
Test System:EVERFINE GO-2000A\_V1 SYSTEM V2.0.291  
Humidity:54.2%  
Test Distance:10.149m [K=1.0000]  
Remarks:

Checker: Jianfei Wu

Assessor: Lijian Jiang

## CU AND LUMINAIRE BUDGETARY ESTIMATE DIAGRAM

pcc	80%			70%			50%			30%			10%			0
pw	50%	30%	10%	50%	30%	10%	50%	30%	10%	50%	30%	10%	50%	30%	10%	0
pfc	20%			20%			20%			20%			20%			0
RCR	RCR:Room Cavity Ratio						Coefficients of Utilization(CU)									
0.0	1.18	1.18	1.18	1.15	1.15	1.15	1.09	1.09	1.09	1.04	1.04	1.04	.99	.99	.99	.97
1.0	.99	.93	.89	.96	.91	.87	.91	.87	.83	.87	.83	.80	.82	.80	.77	.75
2.0	.84	.76	.70	.82	.75	.69	.78	.72	.66	.74	.69	.64	.70	.66	.62	.60
3.0	.73	.64	.57	.71	.63	.56	.68	.60	.54	.64	.58	.53	.61	.56	.52	.49
4.0	.64	.55	.47	.63	.54	.47	.60	.52	.46	.57	.50	.45	.54	.48	.44	.41
5.0	.57	.47	.40	.56	.47	.40	.53	.45	.39	.51	.44	.38	.49	.42	.37	.35
6.0	.51	.42	.35	.50	.41	.34	.48	.40	.34	.46	.39	.33	.44	.38	.33	.30
7.0	.46	.37	.30	.45	.36	.30	.43	.35	.30	.42	.35	.29	.40	.34	.29	.27
8.0	.42	.33	.27	.41	.33	.27	.40	.32	.26	.38	.31	.26	.37	.30	.26	.24
9.0	.39	.30	.24	.38	.30	.24	.36	.29	.24	.35	.28	.23	.34	.28	.23	.21
10.0	.36	.27	.22	.35	.27	.22	.34	.26	.21	.32	.26	.21	.31	.25	.21	.19



C Range: 0 - 360DEG  
 C Interval: 15.0DEG  
 Test Speed: HIGH  
 Temperature: 24.7DEG  
 Operators: Lingxin Xie  
 Test Date: 2022-05-27

γ Range: 0 - 180DEG  
 γ Interval: 1.0DEG  
 Test System: EVERFINE GO-2000A\_V1 SYSTEM V2.0.291  
 Humidity: 54.2%  
 Test Distance: 10.149m [K=1.0000]  
 Remarks:

Checker: Jianfei Wu

Assessor: Lijian Jiang

## WEC AND CCEC

pcc	80%			70%			50%			30%			10%			0
pw	50%	30%	10%	50%	30%	10%	50%	30%	10%	50%	30%	10%	50%	30%	10%	0
pfc	20%			20%			20%			20%			20%			0
RCR	RCR:Room Cavity Ratio						Wall Exitance Coefficients (WEC)									
0.0																
1.0	.391	.222	.070	.382	.218	.069	.367	.210	.067	.352	.203	.065	.339	.197	.063	
2.0	.341	.187	.057	.334	.184	.057	.320	.178	.055	.307	.172	.054	.295	.167	.053	
3.0	.304	.162	.048	.297	.159	.048	.285	.154	.047	.273	.150	.046	.263	.145	.045	
4.0	.274	.142	.042	.268	.140	.041	.257	.136	.041	.246	.132	.040	.237	.129	.039	
5.0	.249	.127	.037	.243	.125	.036	.234	.122	.036	.224	.118	.035	.216	.115	.035	
6.0	.228	.114	.033	.223	.113	.032	.214	.110	.032	.206	.107	.031	.198	.104	.031	
7.0	.210	.104	.029	.206	.103	.029	.198	.100	.029	.190	.098	.028	.183	.095	.028	
8.0	.195	.095	.027	.191	.094	.027	.184	.092	.026	.177	.090	.026	.171	.088	.026	
9.0	.181	.088	.025	.178	.087	.024	.172	.085	.024	.165	.083	.024	.160	.081	.023	
10.0	.170	.081	.023	.167	.081	.022	.161	.079	.022	.155	.077	.022	.150	.075	.022	

pcc	80%			70%			50%			30%			10%			0
pw	50%	30%	10%	50%	30%	10%	50%	30%	10%	50%	30%	10%	50%	30%	10%	0
pfc	20%			20%			20%			20%			20%			0
RCR	RCR:Room Cavity Ratio						Ceiling Cavity Exitance Coefficients (CCEC)									
0.0	.216	.216	.216	.185	.185	.185	.126	.126	.126	.072	.072	.072	.023	.023	.023	
1.0	.212	.181	.154	.181	.156	.133	.124	.107	.092	.071	.062	.053	.023	.020	.017	
2.0	.205	.158	.118	.176	.136	.102	.120	.094	.071	.069	.055	.042	.022	.018	.014	
3.0	.197	.141	.096	.169	.122	.083	.116	.084	.058	.067	.049	.034	.022	.016	.011	
4.0	.189	.128	.081	.162	.111	.070	.112	.077	.050	.065	.045	.029	.021	.015	.010	
5.0	.181	.118	.071	.156	.102	.062	.107	.071	.044	.062	.042	.026	.020	.014	.009	
6.0	.174	.110	.064	.149	.095	.055	.103	.066	.039	.060	.039	.023	.019	.013	.008	
7.0	.166	.103	.058	.143	.089	.051	.099	.063	.036	.057	.037	.021	.019	.012	.007	
8.0	.159	.097	.054	.137	.084	.047	.095	.059	.034	.055	.035	.020	.018	.011	.007	
9.0	.153	.092	.051	.132	.080	.045	.091	.056	.032	.053	.033	.019	.017	.011	.006	
10.0	.147	.088	.049	.127	.076	.042	.088	.054	.030	.051	.032	.018	.017	.010	.006	

C Range: 0 - 360DEG  
 C Interval: 15.0DEG  
 Test Speed: HIGH  
 Temperature:24.7DEG  
 Operators:Lingxin Xie  
 Test Date:2022-05-27

γ Range: 0 - 180DEG  
 γ Interval: 1.0DEG  
 Test System:EVERFINE GO-2000A\_V1 SYSTEM V2.0.291  
 Humidity:54.2%  
 Test Distance:10.149m [K=1.0000]  
 Remarks:

Checker: Jianfei Wu

Assessor: Lijian Jiang

UGR(Unified Glare Rating) Table

ceiling/cavity	0.7	0.7	0.5	0.5	0.3	0.7	0.7	0.5	0.5	0.3
walls	0.5	0.3	0.5	0.3	0.3	0.5	0.3	0.5	0.3	0.3
working plane	0.2	0.2	0.2	0.2	0.2	0.2	0.2	0.2	0.2	0.2
Room dimensions	Viewed crosswise					Viewed endwise				
x = 2H y = 2H	23.5	25.1	23.8	25.4	25.7	22.0	23.6	22.3	23.8	24.1
3H	26.2	27.6	26.5	27.9	28.3	23.5	25.0	23.9	25.3	25.6
4H	27.6	29.0	28.0	29.3	29.7	24.1	25.6	24.5	25.9	26.2
6H	29.1	30.5	29.5	30.8	31.2	24.6	25.9	25.0	26.3	26.6
8H	29.9	31.2	30.3	31.6	32.0	24.7	26.0	25.1	26.4	26.7
12H	30.8	32.1	31.2	32.4	32.8	24.8	26.0	25.2	26.4	26.8
4H 2H	24.2	25.6	24.5	25.9	26.3	23.0	24.4	23.4	24.8	25.1
3H	27.0	28.3	27.5	28.7	29.1	24.9	26.1	25.3	26.5	26.9
4H	28.7	29.8	29.1	30.2	30.7	25.7	26.9	26.1	27.2	27.7
6H	30.5	31.5	30.9	31.9	32.4	26.3	27.4	26.8	27.8	28.2
8H	31.4	32.4	31.9	32.8	33.3	26.5	27.5	27.0	28.0	28.4
12H	32.4	33.3	32.9	33.8	34.2	26.7	27.6	27.2	28.0	28.5
8H 4H	29.1	30.1	29.6	30.5	31.0	26.7	27.7	27.2	28.1	28.6
6H	31.1	32.0	31.6	32.5	33.0	27.7	28.5	28.2	29.0	29.5
8H	32.3	33.0	32.8	33.5	34.1	28.1	28.9	28.7	29.4	29.9
12H	33.5	34.2	34.1	34.7	35.3	28.5	29.1	29.0	29.6	30.2
12H 4H	29.1	30.0	29.6	30.5	31.0	27.0	27.9	27.5	28.4	28.8
6H	31.3	32.0	31.8	32.5	33.1	28.2	29.0	28.7	29.5	30.0
8H	32.5	33.2	33.1	33.7	34.2	28.8	29.5	29.4	30.0	30.6
Variations with the observer position at spacings:										
S = 1.0H	+ 0.1 / - 0.1					+ 0.1 / - 0.1				
1.5H	+ 0.2 / - 0.3					+ 0.2 / - 0.3				
2.0H	+ 0.2 / - 0.4					+ 0.2 / - 0.4				

CIE Pub.117 Corrected 494.3 lm Total Lamp Luminous Flux. (8log(F/F0) = -2.4)

C Range: 0 - 360DEG  
C Interval: 15.0DEG  
Test Speed: HIGH  
Temperature: 24.7DEG  
Operators: Lingxin Xie  
Test Date: 2022-05-27

$\gamma$  Range: 0 - 180DEG  
 $\gamma$  Interval: 1.0DEG  
Test System: EVERFINE GO-2000A\_V1 SYSTEM V2.0.291  
Humidity: 54.2%  
Test Distance: 10.149m [K=1.0000]  
Remarks:

Checker: Jianfei Wu

Assessor: Lijian Jiang

## UTILIZATION FACTORS TABLE

REFLECTANCE										
Ceiling	0.8	0.8	0.8	0.7	0.7	0.7	0.5	0.5	0.5	0
Walls	0.7	0.5	0.3	0.7	0.5	0.3	0.7	0.5	0.3	0
Working plane	0.2	0.2	0.2	0.2	0.2	0.2	0.2	0.2	0.2	0
ROOM INDEX	UTILIZATION FACTORS (PERCENT) $k(RI) \times RCR = 5$									
$k = 0.60$	52	40	32	51	40	32	50	39	32	25
0.80	62	49	41	60	48	41	58	47	40	33
1.00	70	57	49	68	56	48	66	58	48	40
1.25	76	64	56	75	64	56	72	62	55	47
1.50	82	70	62	80	69	61	76	67	60	51
2.00	89	78	70	87	77	70	83	74	68	59
2.50	93	83	76	91	82	75	86	79	73	63
3.00	97	88	81	94	86	80	90	83	78	68
4.00	101	94	88	99	92	86	94	88	83	73
5.00	104	98	92	101	96	91	96	91	87	77
ROOM INDEX	UF (total)									Direct
According to DIN EN 13032-2 2004			Suspended					SHRNOM = 1.25		

C Range: 0 - 360DEG  
 C Interval: 15.0DEG  
 Test Speed: HIGH  
 Temperature: 24.7DEG  
 Operators: Lingxin Xie  
 Test Date: 2022-05-27

Checker: Jianfei Wu

$\gamma$  Range: 0 - 180DEG  
 $\gamma$  Interval: 1.0DEG  
 Test System: EVERFINE GO-2000A\_V1 SYSTEM V2.0.291  
 Humidity: 54.2%  
 Test Distance: 10.149m [K=1.0000]  
 Remarks:

Assessor: Lijian Jiang

## ISOCANDELA DIAGRAM

Conical surface Flux(90deg):

210.5 lm

%lum = 42.6%

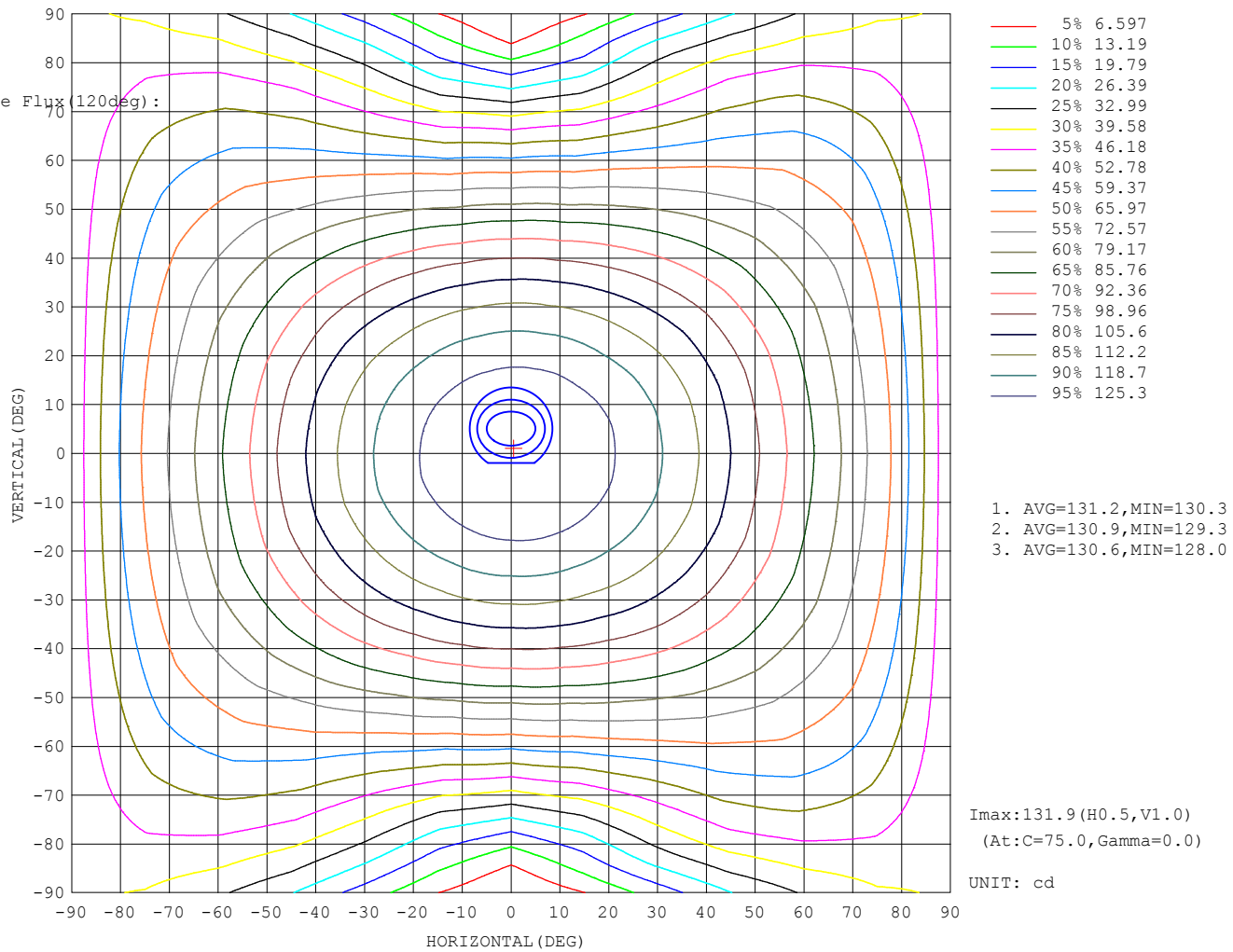
%lamp = 42.6%

Conical surface Flux(120deg):

322.09 lm

%lum = 65.2%

%lamp = 65.2%



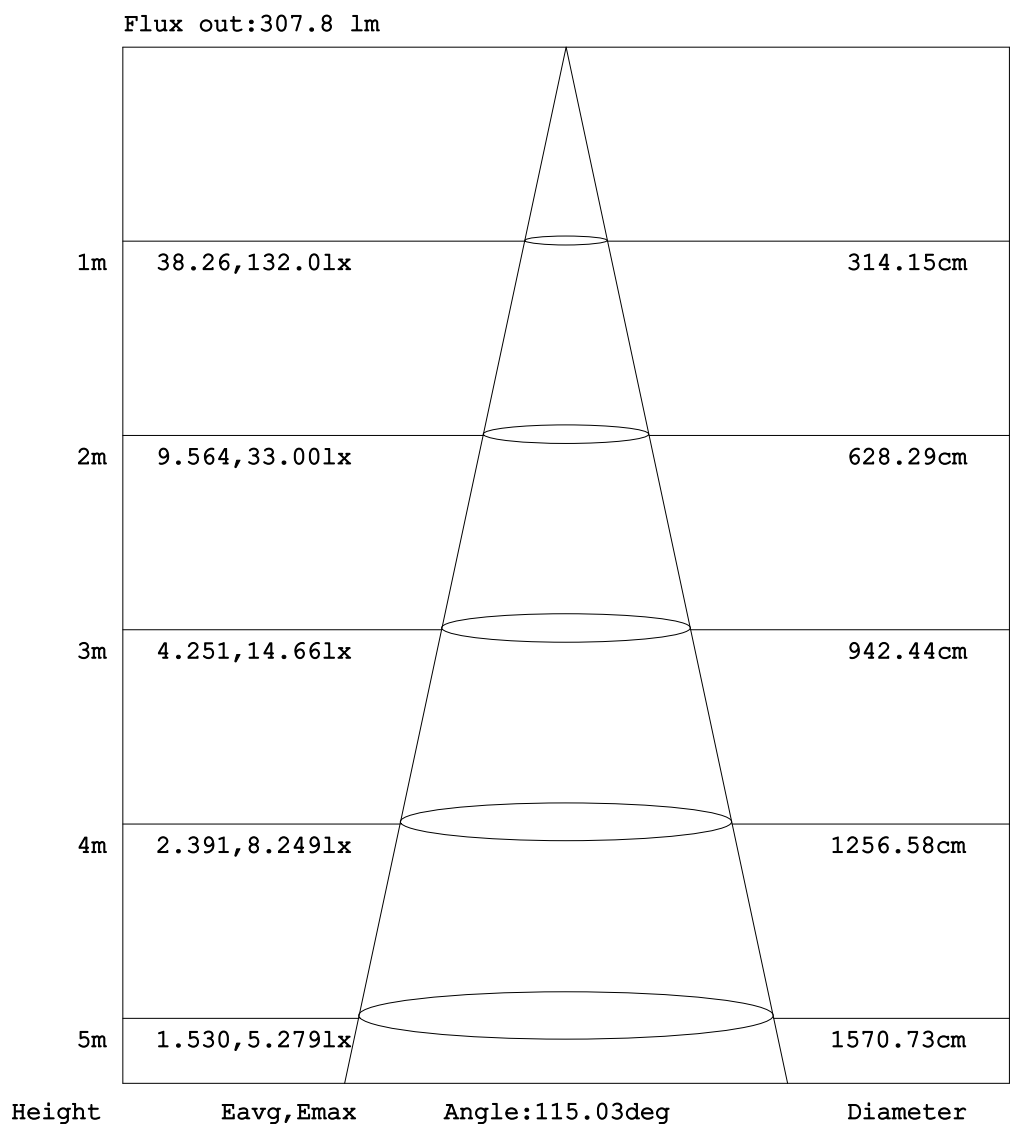
C Range: 0 - 360DEG  
C Interval: 15.0DEG  
Test Speed: HIGH  
Temperature:24.7DEG  
Operators:Lingxin Xie  
Test Date:2022-05-27

$\gamma$  Range: 0 - 180DEG  
 $\gamma$  Interval: 1.0DEG  
Test System:EVERFINE GO-2000A\_V1 SYSTEM V2.0.291  
Humidity:54.2%  
Test Distance:10.149m [K=1.0000]  
Remarks:

Checker: Jianfei Wu

Assessor: Lijian Jiang

## AAI Figure



Note: The Curves indicate the illuminated area and the average illumination when the luminaire is at different distance.

C Range: 0 - 360DEG  
C Interval: 15.0DEG  
Test Speed: HIGH  
Temperature: 24.7DEG  
Operators: Lingxin Xie  
Test Date: 2022-05-27

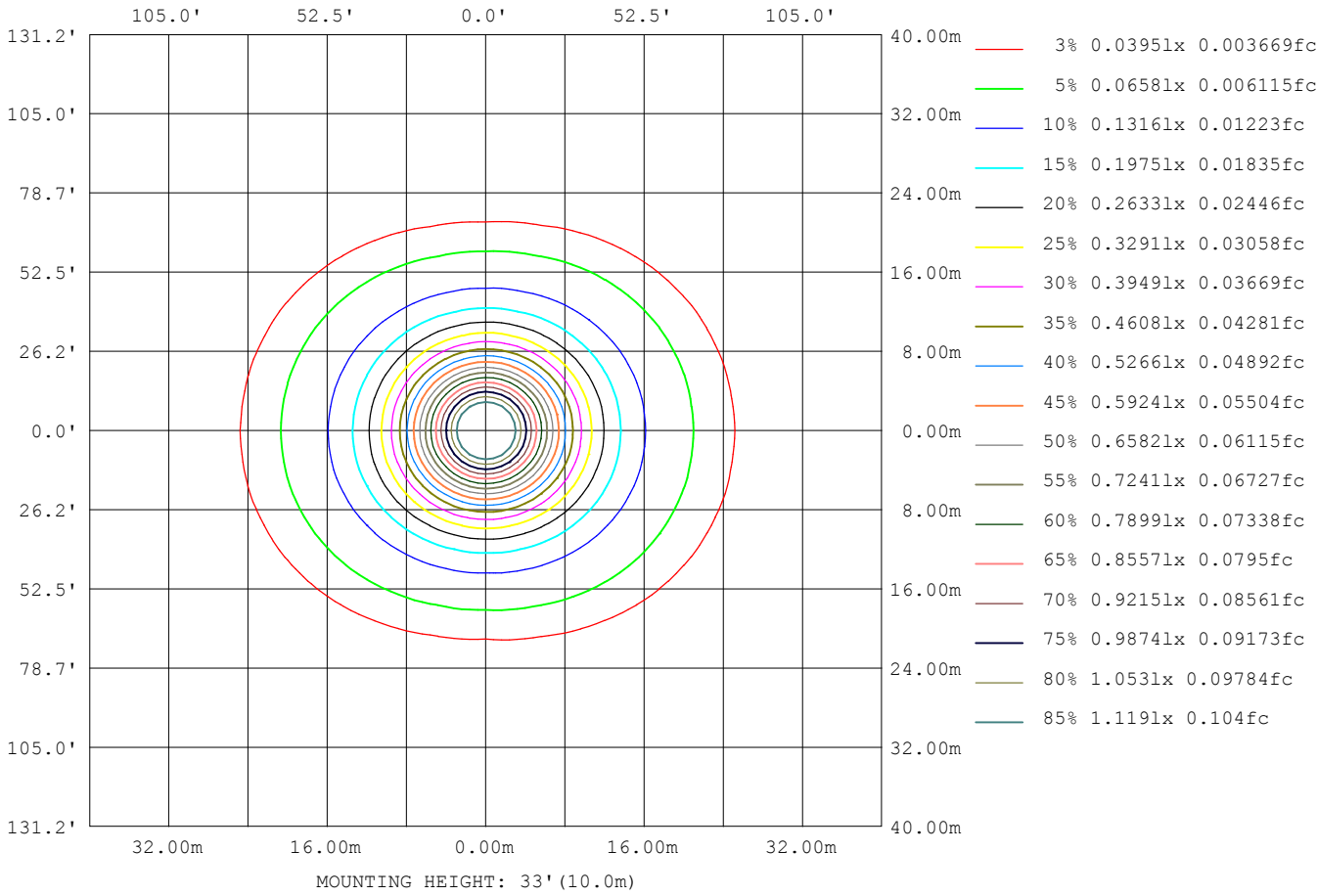
$\gamma$  Range: 0 - 180DEG  
 $\gamma$  Interval: 1.0DEG  
Test System: EVERFINE GO-2000A\_V1 SYSTEM V2.0.291  
Humidity: 54.2%  
Test Distance: 10.149m [K=1.0000]  
Remarks:

Checker: Jianfei Wu

Assessor: Lijian Jiang



ISOLUX DIAGRAM



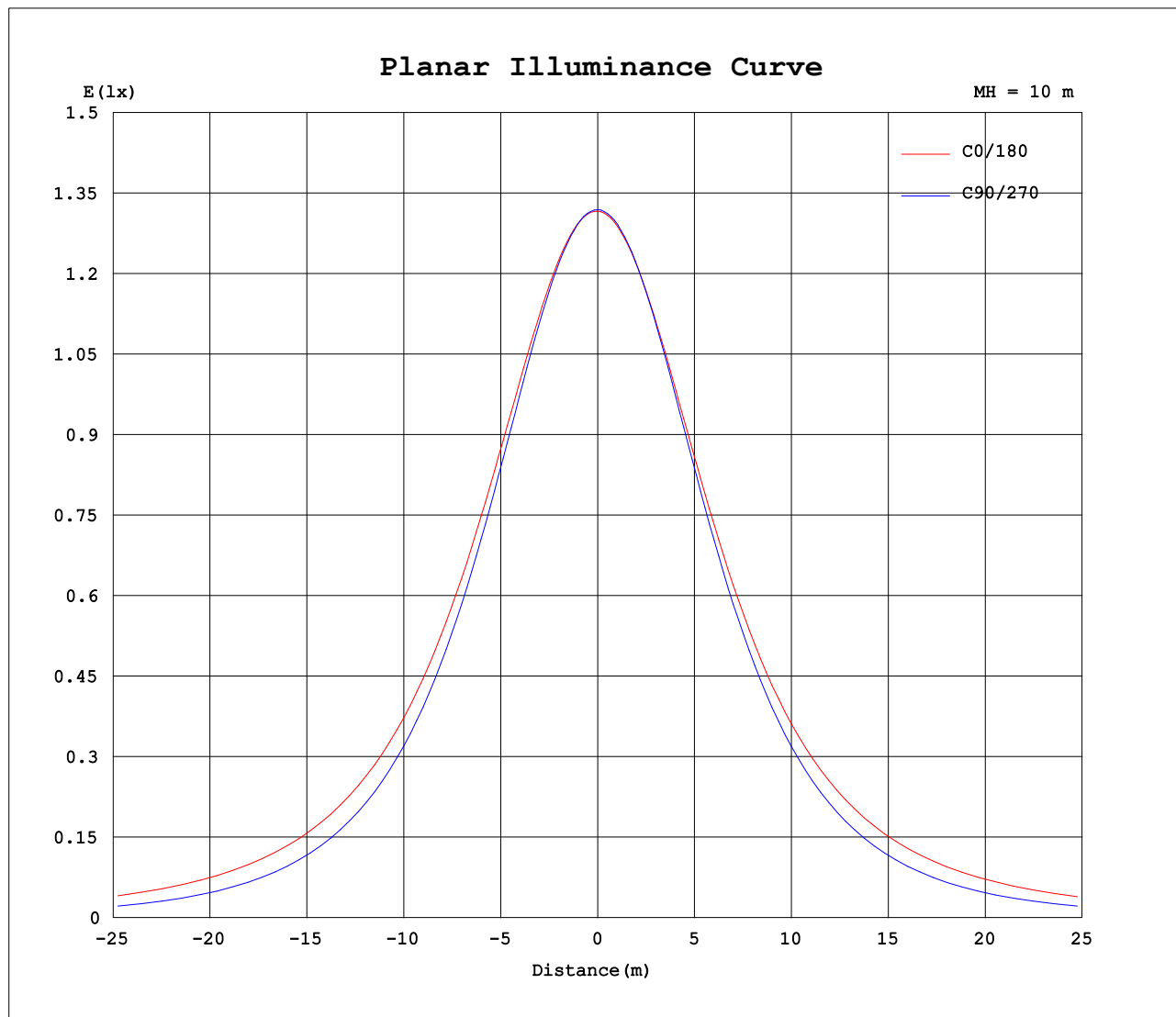
C Range: 0 - 360DEG  
C Interval: 15.0DEG  
Test Speed: HIGH  
Temperature:24.7DEG  
Operators:Lingxin Xie  
Test Date:2022-05-27

γ Range: 0 - 180DEG  
γ Interval: 1.0DEG  
Test System:EVERFINE GO-2000A\_V1 SYSTEM V2.0.291  
Humidity:54.2%  
Test Distance:10.149m [K=1.0000]  
Remarks:

Checker: Jianfei Wu

Assessor: Lijian Jiang

## Planar Illuminance Curve



C Range: 0 - 360DEG  
C Interval: 15.0DEG  
Test Speed: HIGH  
Temperature: 24.7DEG  
Operators: Lingxin Xie  
Test Date: 2022-05-27

Checker: Jianfei Wu

$\gamma$  Range: 0 - 180DEG  
 $\gamma$  Interval: 1.0DEG  
Test System: EVERFINE GO-2000A\_V1 SYSTEM V2.0.291  
Humidity: 54.2%  
Test Distance: 10.149m [K=1.0000]  
Remarks:

Assessor: Lijian Jiang

## LUMINOUS DISTRIBUTION INTENSITY DATA

Table--1

UNIT: cd

C (DEG) γ (DEG)	0	15	30	45	60	75	90	105	120	135	150	165	180	195	210	225	240	255	270
0	132	132	132	132	132	132	132	132	132	132	132	132	132	132	132	132	132	132	132
5	131	132	132	132	132	131	132	131	131	131	131	131	131	131	131	131	131	131	131
10	130	131	130	130	130	130	130	130	130	130	130	130	130	130	130	130	130	130	130
15	129	129	128	128	128	128	127	127	127	127	127	128	127	127	127	127	127	127	127
20	126	126	126	125	124	124	124	124	124	124	124	125	125	124	124	124	123	123	123
25	123	123	122	121	120	119	119	119	119	120	120	121	121	121	120	119	119	118	119
30	120	119	118	117	115	114	113	113	114	115	116	117	117	117	116	115	114	113	113
35	115	115	114	112	109	107	107	107	108	110	111	113	113	112	111	109	107	106	106
40	111	110	108	106	102	100	99.1	99.4	101	103	106	107	108	107	105	103	100	98.9	98.8
45	106	105	103	99.1	95.1	92.1	90.7	91.2	93.3	96.6	99.5	102	102	101	99.3	96.1	93.0	90.6	90.3
50	100	99.3	96.3	92.1	87.2	83.2	81.3	82.2	85.2	89.4	93.1	95.9	96.5	95.4	92.8	88.8	84.8	81.5	81.1
55	94.2	93.3	89.8	84.8	78.7	73.7	71.3	72.5	76.5	81.9	86.4	89.8	90.6	89.3	86.1	81.2	76.2	72.0	71.0
60	88.2	87.2	83.1	77.1	69.9	63.6	60.6	62.4	67.6	74.2	79.7	83.7	84.7	83.2	79.3	73.5	67.3	61.8	60.2
65	82.3	81.1	76.5	69.5	60.9	53.2	49.1	51.8	58.6	66.6	73.2	77.7	79.0	77.2	72.9	66.0	58.4	51.3	48.9
70	76.3	75.0	70.0	62.1	52.0	42.6	37.4	41.2	49.9	59.4	66.8	71.7	73.0	71.2	66.4	58.8	49.7	40.8	37.2
75	69.9	68.4	63.2	55.0	43.8	32.3	25.6	31.0	41.9	52.4	60.3	65.5	66.9	65.0	59.9	51.8	41.8	30.8	25.5
80	62.2	60.9	55.6	47.3	36.0	23.1	14.5	22.0	34.3	45.1	53.1	58.3	59.8	57.8	52.8	44.6	34.2	21.9	14.5
85	52.0	50.6	45.4	37.7	27.2	15.2	5.57	14.2	26.0	36.6	44.4	49.7	51.1	49.1	44.2	36.1	26.1	14.3	4.64
90	40.2	38.8	33.7	26.3	16.4	6.51	0.23	6.68	16.8	26.7	34.2	39.2	40.6	38.6	34.0	26.3	17.0	6.67	0.08
95	25.9	24.6	19.5	12.3	2.38	0.17	0.10	0.13	5.24	14.6	21.6	26.5	27.7	26.0	21.6	14.3	5.33	0.14	0.11
100	5.38	4.39	1.56	0.31	0.25	0.18	0.10	0.16	0.21	1.29	6.24	11.6	13.0	11.1	6.60	1.20	0.19	0.14	0.14
105	0.43	0.38	0.35	0.31	0.26	0.22	0.17	0.21	0.22	0.29	0.35	0.67	0.83	0.55	0.31	0.27	0.22	0.15	0.18
110	0.39	0.37	0.35	0.33	0.27	0.26	0.19	0.24	0.28	0.33	0.35	0.38	0.45	0.35	0.34	0.30	0.26	0.19	0.22
115	0.39	0.40	0.38	0.35	0.29	0.31	0.27	0.29	0.29	0.35	0.36	0.40	0.38	0.37	0.36	0.31	0.29	0.26	0.26
120	0.40	0.41	0.39	0.38	0.31	0.35	0.30	0.33	0.31	0.38	0.39	0.42	0.40	0.38	0.38	0.32	0.33	0.29	0.30
125	0.40	0.42	0.39	0.41	0.38	0.38	0.35	0.37	0.38	0.40	0.40	0.44	0.42	0.40	0.40	0.37	0.37	0.31	0.35
130	0.47	0.47	0.41	0.42	0.40	0.42	0.37	0.41	0.38	0.43	0.42	0.47	0.45	0.40	0.44	0.38	0.40	0.37	0.39
135	0.49	0.48	0.47	0.47	0.42	0.44	0.40	0.44	0.42	0.47	0.47	0.49	0.47	0.47	0.45	0.40	0.44	0.39	0.43
140	0.49	0.50	0.50	0.49	0.49	0.47	0.47	0.48	0.49	0.50	0.49	0.51	0.51	0.50	0.49	0.48	0.47	0.46	0.46
145	0.50	0.54	0.51	0.52	0.51	0.52	0.50	0.51	0.49	0.52	0.50	0.54	0.52	0.52	0.51	0.52	0.50	0.50	0.50
150	0.51	0.56	0.52	0.54	0.51	0.54	0.52	0.53	0.50	0.54	0.50	0.55	0.53	0.52	0.53	0.53	0.53	0.50	0.53
155	0.55	0.57	0.54	0.56	0.51	0.56	0.54	0.56	0.52	0.56	0.58	0.58	0.57	0.55	0.55	0.55	0.55	0.51	0.55
160	0.59	0.58	0.58	0.60	0.59	0.58	0.60	0.60	0.59	0.60	0.60	0.59	0.60	0.57	0.57	0.56	0.57	0.56	0.57
165	0.60	0.60	0.60	0.60	0.61	0.60	0.61	0.60	0.60	0.60	0.60	0.61	0.61	0.59	0.59	0.60	0.59	0.60	0.59
170	0.60	0.60	0.60	0.61	0.61	0.61	0.60	0.60	0.60	0.60	0.60	0.60	0.61	0.61	0.61	0.60	0.60	0.61	0.61
175	0.61	0.61	0.60	0.60	0.60	0.61	0.60	0.60	0.61	0.61	0.60	0.60	0.61	0.61	0.61	0.61	0.61	0.60	0.60
180	0.61	0.61	0.60	0.60	0.60	0.61	0.60	0.60	0.61	0.61	0.60	0.60	0.61	0.61	0.61	0.61	0.61	0.60	0.60

C Range: 0 - 360DEG  
C Interval: 15.0DEG  
Test Speed: HIGH  
Temperature:24.7DEG  
Operators:Lingxin Xie  
Test Date:2022-05-27

γ Range: 0 - 180DEG  
γ Interval: 1.0DEG  
Test System:EVERFINE GO-2000A\_V1 SYSTEM V2.0.291  
Humidity:54.2%  
Test Distance:10.149m [K=1.0000]  
Remarks:

Checker: Jianfei Wu

Assessor: Lijian Jiang

## LUMINOUS DISTRIBUTION INTENSITY DATA

Table--2

UNIT: cd

C (DEG) γ (DEG)	285	300	315	330	345													
0	132	132	132	132	132													
5	132	131	131	132	132													
10	130	130	130	130	131													
15	127	128	128	128	129													
20	124	124	125	126	126													
25	119	120	121	122	123													
30	113	115	116	118	119													
35	107	109	111	113	115													
40	99.7	102	105	108	110													
45	91.5	94.7	98.5	102	105													
50	82.5	86.7	91.4	96.0	99.0													
55	73.0	78.3	83.9	89.4	93.0													
60	62.9	69.4	76.3	82.7	86.8													
65	52.4	60.3	68.6	76.0	80.6													
70	41.7	51.5	61.1	69.4	74.6													
75	31.5	43.2	54.1	62.7	68.1													
80	22.2	35.6	46.8	55.5	60.6													
85	14.6	27.1	37.3	45.5	50.4													
90	6.25	16.6	26.0	33.9	38.6													
95	0.15	2.40	12.1	20.0	24.4													
100	0.15	0.33	0.31	1.39	3.60													
105	0.18	0.25	0.28	0.34	0.39													
110	0.19	0.28	0.30	0.34	0.36													
115	0.28	0.31	0.31	0.36	0.37													
120	0.30	0.34	0.31	0.39	0.37													
125	0.31	0.37	0.38	0.41	0.39													
130	0.36	0.40	0.38	0.43	0.40													
135	0.38	0.44	0.40	0.46	0.47													
140	0.45	0.47	0.49	0.48	0.49													
145	0.51	0.50	0.49	0.52	0.50													
150	0.51	0.53	0.51	0.53	0.52													
155	0.51	0.54	0.54	0.56	0.53													
160	0.56	0.57	0.58	0.58	0.57													
165	0.59	0.60	0.60	0.59	0.61													
170	0.61	0.61	0.60	0.60	0.61													
175	0.61	0.61	0.60	0.60	0.60													
180	0.61	0.61	0.60	0.60	0.60													

C Range: 0 - 360DEG  
 C Interval: 15.0DEG  
 Test Speed: HIGH  
 Temperature:24.7DEG  
 Operators:Lingxin Xie  
 Test Date:2022-05-27

Checker: Jianfei Wu

γ Range: 0 - 180DEG  
 γ Interval: 1.0DEG  
 Test System:EVERFINE GO-2000A\_V1 SYSTEM V2.0.291  
 Humidity:54.2%  
 Test Distance:10.149m [K=1.0000]  
 Remarks:

Assessor: Lijian Jiang