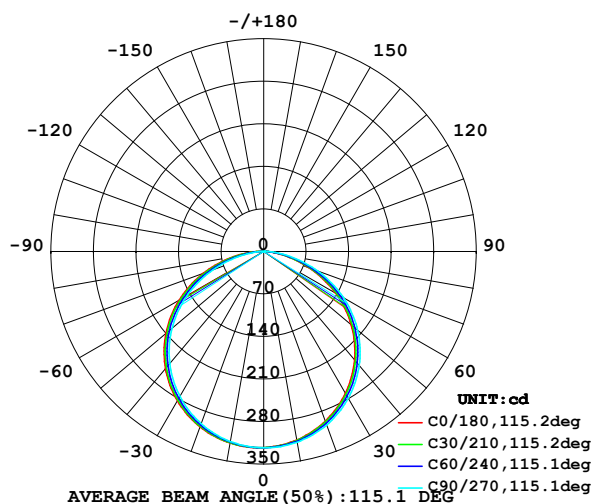


LUMINAIRE PHOTOMETRIC TEST REPORT

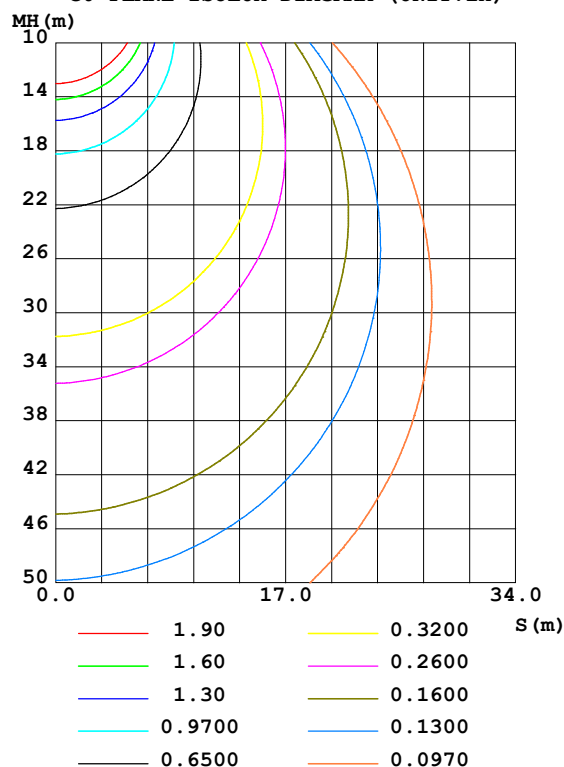
Test:U:24.00V I:0.4460A P:10.70W PF:1.000 Lamp Flux:957.1x1 lm		
NAME: LED Soft light bar	SUR.:1.0m*0.01m	SERIAL No.:WY-PG-2022052504
MFR.: LEDIA		

DATA OF LAMP		PHOTOMETRIC DATA Eff: 89.42 lm/W			
MODEL	EKF5096HL90	Imax(cd)	323.7	S/MH(C0/180)	1.31
NOMINAL POWER(W)	11	LOR(%)	100.0	S/MH(C90/270)	1.27
RATED VOLTAGE(V)	24	TOTAL FLUX(lm)	957.10	η UP,DN(C0-180)	0.3,49.9
NOMINAL FLUX(lm)	957.1	CIE CLASS	DIRECT	η UP,DN(C180-360)	0.3,49.4
LAMPS INSIDE	1	η up(%)	0.6	CIBSE SHR NOM	1.25
TEST VOLTAGE(V)	24	η down(%)	99.4	CIBSE SHR MAX	1.35

LUMINOUS INTENSITY DISTRIBUTION DIAGRAM



C0 PLANE ISOLUX DIAGRAM (UNIT:lx)



C Range: 0 - 360DEG
 C Interval: 15.0DEG
 Test Speed: HIGH
 Temperature:24.7DEG
 Operators:Lingxin Xie
 Test Date:2022-05-27

γ Range: 0 - 180DEG
 γ Interval: 1.0DEG
 Test System:EVERFINE GO-2000A_V1 SYSTEM V2.0.291
 Humidity:54.2%
 Test Distance:10.149m [K=1.0000]
 Remarks:

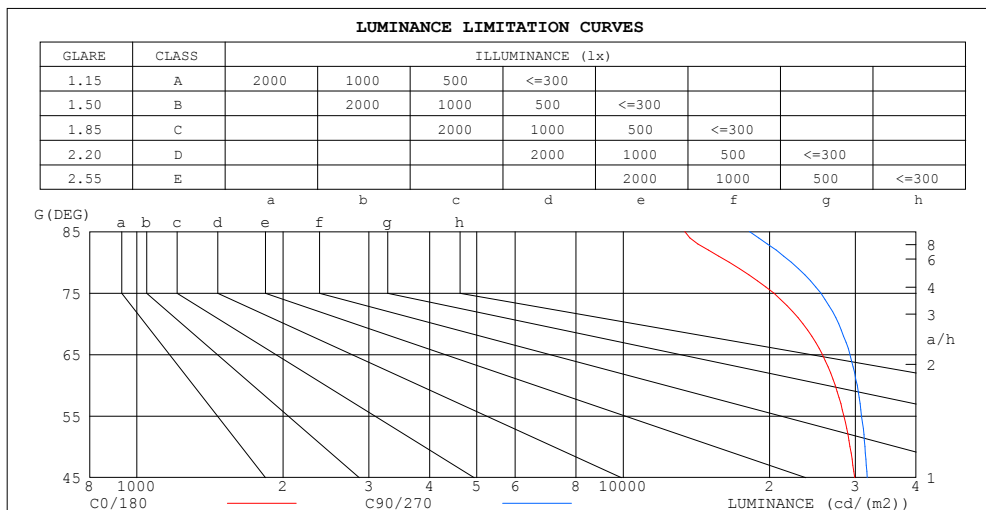
Checker: Jianfei Wu

Assessor: Lijian Jiang

ZONAL FLUX DIAGRAM AND LUMINANCE LIMITATION CURVES

ZONAL FLUX DIAGRAM:

γ	C0	C45	C90	C135	C180	C225	C270	C315	γ	Φ zone	Φ total	%lum, lamp
10	315.1	316.4	318.6	320.4	320.0	318.9	317.6	316.0	0- 10	30.59	30.59	3.2,3.2
20	297.2	299.7	303.8	307.1	307.1	304.8	301.4	298.5	10- 20	87.93	118.5	12.4,12.4
30	269.4	273.4	278.8	283.8	284.1	280.5	275.7	271.3	20- 30	134.2	252.7	26.4,26.4
40	233.1	237.6	244.7	251.0	251.5	247.1	240.7	234.9	30- 40	163.3	416.0	43.5,43.5
50	188.1	193.7	202.0	209.4	210.1	204.7	196.9	190.2	40- 50	171.2	587.2	61.3,61.3
60	136.5	142.3	151.4	160.0	161.0	154.6	145.6	138.3	50- 60	156.2	743.4	77.7,77.7
70	80.12	85.84	94.89	104.6	106.0	98.53	88.81	81.52	60- 70	119.7	863.1	90.2,90.2
80	28.67	31.91	38.51	48.76	50.74	42.63	33.45	28.72	70- 80	68.09	931.2	97.3,97.3
90	3.800	3.046	0.4191	7.739	9.485	5.529	0.1537	2.880	80- 90	19.89	951.1	99.4,99.4
100	0.9455	0.3587	0.3006	0.2819	0.4652	0.2433	0.2822	0.4944	90-100	1.690	952.8	99.5,99.5
110	0.5121	0.5320	0.5123	0.4676	0.4035	0.3778	0.4935	0.4929	100-110	0.4286	953.2	99.6,99.6
120	0.7172	0.7561	0.6980	0.6981	0.6084	0.6020	0.7173	0.6979	110-120	0.5825	953.8	99.7,99.7
130	0.9094	0.9548	0.9469	0.9161	0.8139	0.8066	0.9225	0.9093	120-130	0.7106	954.5	99.7,99.7
140	1.121	1.128	1.121	1.089	0.9994	0.9922	1.108	1.101	130-140	0.7629	955.2	99.8,99.8
150	1.229	1.268	1.242	1.230	1.166	1.165	1.242	1.197	140-150	0.7240	956.0	99.9,99.9
160	1.358	1.383	1.332	1.364	1.319	1.319	1.358	1.318	150-160	0.5957	956.6	99.9,99.9
170	1.460	1.449	1.415	1.451	1.441	1.402	1.454	1.405	160-170	0.3931	957.0	100,100
180	1.518	1.498	1.511	1.518	1.537	1.518	1.518	1.511	170-180	0.1394	957.1	100,100
DEG	LUMINOUS INTENSITY:cd									UNIT:lm		



LUMINANCE cd/(m2)		
G (DEG)	C0/180	C90/270
85	13386	18188
80	16513	22180
75	20387	25494
70	23425	27745
65	25676	29248
60	27295	30270
55	28436	30916
50	29267	31421
45	29917	31733

C Range: 0 - 360DEG
 C Interval: 15.0DEG
 Test Speed: HIGH
 Temperature: 24.7DEG
 Operators: Lingxin Xie
 Test Date: 2022-05-27

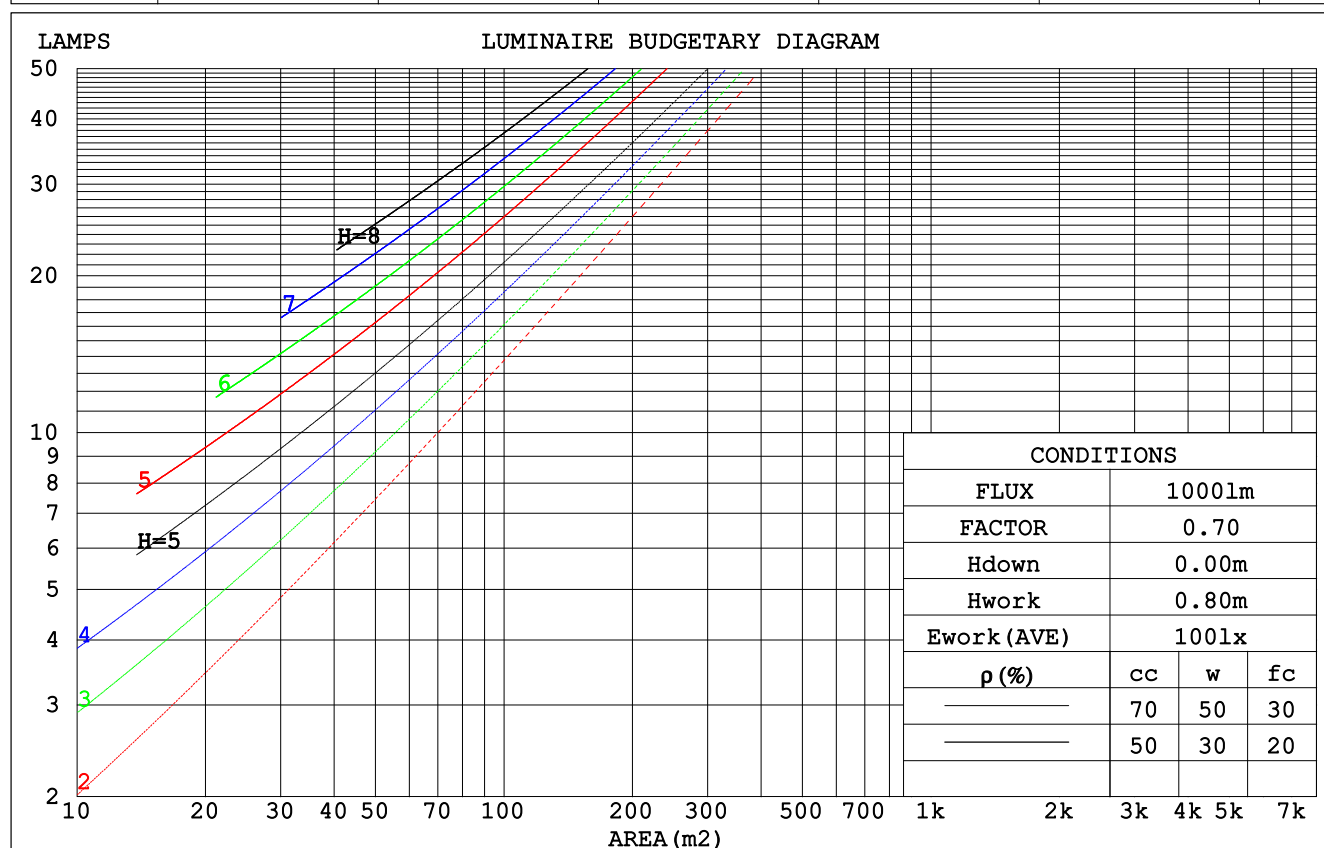
γ Range: 0 - 180DEG
 γ Interval: 1.0DEG
 Test System: EVERFINE GO-2000A_V1 SYSTEM V2.0.291
 Humidity: 54.2%
 Test Distance: 10.149m [K=1.0000]
 Remarks:

Checker: Jianfei Wu

Assessor: Lijian Jiang

CU AND LUMINAIRE BUDGETARY ESTIMATE DIAGRAM

pcc	80%			70%			50%			30%			10%			0
pw	50%	30%	10%	50%	30%	10%	50%	30%	10%	50%	30%	10%	50%	30%	10%	0
pfc	20%			20%			20%			20%			20%			0
RCR	RCR:Room Cavity Ratio						Coefficients of Utilization(CU)									
0.0	1.19	1.19	1.19	1.16	1.16	1.16	1.11	1.11	1.11	1.06	1.06	1.06	1.01	1.01	1.01	.99
1.0	1.04	.99	.95	1.01	.97	.94	.97	.94	.91	.93	.90	.88	.89	.87	.85	.83
2.0	.90	.83	.77	.88	.82	.76	.84	.79	.74	.81	.77	.73	.78	.74	.71	.69
3.0	.79	.71	.64	.77	.70	.63	.74	.68	.62	.71	.66	.61	.69	.64	.60	.58
4.0	.70	.61	.54	.68	.60	.54	.66	.59	.53	.63	.57	.52	.61	.56	.51	.49
5.0	.62	.53	.46	.61	.52	.46	.59	.51	.46	.57	.50	.45	.55	.49	.44	.42
6.0	.56	.47	.40	.55	.46	.40	.53	.45	.40	.51	.45	.39	.50	.44	.39	.37
7.0	.51	.42	.36	.50	.41	.35	.48	.41	.35	.47	.40	.35	.45	.39	.35	.32
8.0	.46	.38	.32	.45	.37	.32	.44	.37	.31	.43	.36	.31	.42	.35	.31	.29
9.0	.42	.34	.28	.42	.34	.28	.41	.33	.28	.39	.33	.28	.38	.32	.28	.26
10.0	.39	.31	.26	.39	.31	.26	.37	.30	.26	.36	.30	.25	.36	.30	.25	.23



C Range: 0 - 360DEG
 C Interval: 15.0DEG
 Test Speed: HIGH
 Temperature: 24.7DEG
 Operators: Lingxin Xie
 Test Date: 2022-05-27

γ Range: 0 - 180DEG
 γ Interval: 1.0DEG
 Test System: EVERFINE GO-2000A_V1 SYSTEM V2.0.291
 Humidity: 54.2%
 Test Distance: 10.149m [K=1.0000]
 Remarks:

Checker: Jianfei Wu

Assessor: Lijian Jiang

WEC AND CCEC

pcc	80%			70%			50%			30%			10%			0
pw	50%	30%	10%	50%	30%	10%	50%	30%	10%	50%	30%	10%	50%	30%	10%	0
pfc	20%			20%			20%			20%			20%			0
RCR	RCR:Room Cavity Ratio						Wall Exitance Coefficients (WEC)									
0.0																
1.0	.314	.178	.057	.306	.175	.056	.293	.168	.054	.280	.162	.052	.269	.156	.050	
2.0	.294	.161	.050	.288	.159	.049	.276	.153	.048	.265	.149	.047	.255	.144	.045	
3.0	.272	.145	.043	.266	.143	.043	.256	.139	.042	.246	.135	.041	.237	.131	.041	
4.0	.251	.130	.038	.246	.129	.038	.236	.125	.037	.228	.122	.037	.219	.119	.036	
5.0	.232	.118	.034	.227	.117	.034	.219	.114	.034	.211	.111	.033	.204	.109	.033	
6.0	.215	.108	.031	.211	.107	.031	.203	.104	.030	.196	.102	.030	.190	.100	.030	
7.0	.200	.099	.028	.196	.098	.028	.190	.096	.028	.183	.094	.027	.177	.092	.027	
8.0	.187	.091	.026	.183	.090	.026	.177	.089	.025	.172	.087	.025	.166	.085	.025	
9.0	.175	.085	.024	.172	.084	.024	.166	.082	.023	.161	.081	.023	.157	.080	.023	
10.0	.164	.079	.022	.162	.078	.022	.157	.077	.022	.152	.076	.021	.148	.074	.021	

pcc	80%			70%			50%			30%			10%			0
pw	50%	30%	10%	50%	30%	10%	50%	30%	10%	50%	30%	10%	50%	30%	10%	0
pfc	20%			20%			20%			20%			20%			0
RCR	RCR:Room Cavity Ratio						Ceiling Cavity Exitance Coefficients (CCEC)									
0.0	.195	.195	.195	.167	.167	.167	.114	.114	.114	.065	.065	.065	.021	.021	.021	
1.0	.185	.161	.139	.159	.138	.120	.109	.095	.083	.062	.055	.048	.020	.018	.016	
2.0	.177	.137	.103	.152	.118	.089	.104	.081	.062	.060	.047	.036	.019	.015	.012	
3.0	.170	.119	.079	.146	.103	.068	.100	.071	.048	.058	.042	.028	.019	.014	.009	
4.0	.162	.106	.063	.139	.092	.055	.096	.064	.039	.055	.037	.023	.018	.012	.007	
5.0	.155	.096	.052	.133	.083	.045	.092	.058	.032	.053	.034	.019	.017	.011	.006	
6.0	.148	.087	.044	.127	.076	.038	.088	.053	.027	.051	.031	.016	.016	.010	.005	
7.0	.141	.080	.038	.121	.070	.033	.084	.049	.023	.049	.029	.014	.016	.009	.005	
8.0	.134	.075	.034	.116	.065	.029	.080	.045	.021	.047	.027	.012	.015	.009	.004	
9.0	.128	.070	.030	.110	.060	.026	.077	.042	.019	.045	.025	.011	.014	.008	.004	
10.0	.122	.065	.027	.106	.057	.024	.073	.040	.017	.043	.024	.010	.014	.008	.003	

C Range: 0 - 360DEG
 C Interval: 15.0DEG
 Test Speed: HIGH
 Temperature:24.7DEG
 Operators:Lingxin Xie
 Test Date:2022-05-27

γ Range: 0 - 180DEG
 γ Interval: 1.0DEG
 Test System:EVERFINE GO-2000A_V1 SYSTEM V2.0.291
 Humidity:54.2%
 Test Distance:10.149m [K=1.0000]
 Remarks:

Checker: Jianfei Wu

Assessor: Lijian Jiang

UGR(Unified Glare Rating) Table

ceiling/cavity	0.7	0.7	0.5	0.5	0.3	0.7	0.7	0.5	0.5	0.3
walls	0.5	0.3	0.5	0.3	0.3	0.5	0.3	0.5	0.3	0.3
working plane	0.2	0.2	0.2	0.2	0.2	0.2	0.2	0.2	0.2	0.2
Room dimensions	Viewed crosswise					Viewed endwise				
x = 2H y = 2H	24.3	25.9	24.6	26.1	26.3	24.7	26.2	25.0	26.5	26.7
3H	25.7	27.1	26.0	27.4	27.6	26.3	27.7	26.6	27.9	28.2
4H	26.2	27.5	26.5	27.8	28.1	26.9	28.2	27.2	28.5	28.7
6H	26.5	27.7	26.8	28.0	28.3	27.3	28.5	27.6	28.8	29.1
8H	26.6	27.8	26.9	28.1	28.4	27.4	28.6	27.7	28.9	29.2
12H	26.6	27.8	26.9	28.1	28.4	27.5	28.6	27.8	28.9	29.3
4H 2H	25.0	26.3	25.3	26.6	26.8	25.3	26.6	25.6	26.9	27.1
3H	26.5	27.7	26.9	28.0	28.3	27.0	28.1	27.3	28.5	28.8
4H	27.1	28.2	27.5	28.5	28.9	27.7	28.8	28.1	29.1	29.4
6H	27.5	28.4	27.9	28.8	29.2	28.2	29.2	28.6	29.5	29.9
8H	27.6	28.5	28.0	28.9	29.3	28.4	29.3	28.8	29.6	30.0
12H	27.7	28.5	28.1	28.9	29.3	28.5	29.3	28.9	29.7	30.1
8H 4H	27.3	28.2	27.8	28.6	29.0	27.9	28.8	28.3	29.1	29.5
6H	27.9	28.6	28.3	29.0	29.5	28.5	29.3	29.0	29.7	30.1
8H	28.0	28.7	28.5	29.1	29.6	28.8	29.4	29.2	29.8	30.3
12H	28.2	28.7	28.6	29.2	29.7	28.9	29.5	29.4	29.9	30.4
12H 4H	27.4	28.2	27.8	28.6	29.0	27.9	28.7	28.3	29.1	29.5
6H	27.9	28.6	28.4	29.0	29.5	28.5	29.2	29.0	29.6	30.1
8H	28.1	28.7	28.6	29.1	29.6	28.8	29.4	29.3	29.8	30.3
Variations with the observer position at spacings:										
S = 1.0H	+ 0.2 / - 0.2					+ 0.1 / - 0.2				
1.5H	+ 0.2 / - 0.4					+ 0.2 / - 0.3				
2.0H	+ 0.2 / - 0.3					+ 0.2 / - 0.3				

CIE Pub.117 Corrected 957.1 lm Total Lamp Luminous Flux.(8log(F/F0) = -0.2)

C Range: 0 - 360DEG
 C Interval: 15.0DEG
 Test Speed: HIGH
 Temperature:24.7DEG
 Operators:Lingxin Xie
 Test Date:2022-05-27

γ Range: 0 - 180DEG
 γ Interval: 1.0DEG
 Test System:EVERFINE GO-2000A_V1 SYSTEM V2.0.291
 Humidity:54.2%
 Test Distance:10.149m [K=1.0000]
 Remarks:

Checker: Jianfei Wu

Assessor: Lijian Jiang

UTILIZATION FACTORS TABLE

REFLECTANCE										
Ceiling	0.8	0.8	0.8	0.7	0.7	0.7	0.5	0.5	0.5	0
Walls	0.7	0.5	0.3	0.7	0.5	0.3	0.7	0.5	0.3	0
Working plane	0.2	0.2	0.2	0.2	0.2	0.2	0.2	0.2	0.2	0
ROOM INDEX	UTILIZATION FACTORS (PERCENT) $k(RI) \times RCR = 5$									
$k = 0.60$	57	45	38	56	45	38	55	44	38	31
0.80	67	55	48	66	55	47	64	54	47	40
1.00	75	64	57	74	63	56	72	65	56	49
1.25	82	72	65	81	71	64	78	70	63	56
1.50	87	77	70	86	77	70	83	75	69	61
2.00	94	86	79	93	84	78	89	82	77	69
2.50	98	90	84	96	89	83	92	86	81	73
3.00	102	95	89	100	93	88	95	90	86	77
4.00	106	100	95	103	98	94	99	95	91	82
5.00	108	103	99	106	101	98	101	98	94	85
ROOM INDEX	UF (total)									Direct
According to DIN EN 13032-2 2004			Suspended					SHRNOM = 1.25		

C Range: 0 - 360DEG
 C Interval: 15.0DEG
 Test Speed: HIGH
 Temperature: 24.7DEG
 Operators: Lingxin Xie
 Test Date: 2022-05-27

Checker: Jianfei Wu

γ Range: 0 - 180DEG
 γ Interval: 1.0DEG
 Test System: EVERFINE GO-2000A_V1 SYSTEM V2.0.291
 Humidity: 54.2%
 Test Distance: 10.149m [K=1.0000]
 Remarks:

Assessor: Lijian Jiang

ISOCANDELA DIAGRAM

Conical surface Flux(90deg):

501.99 lm

%lum = 52.4%

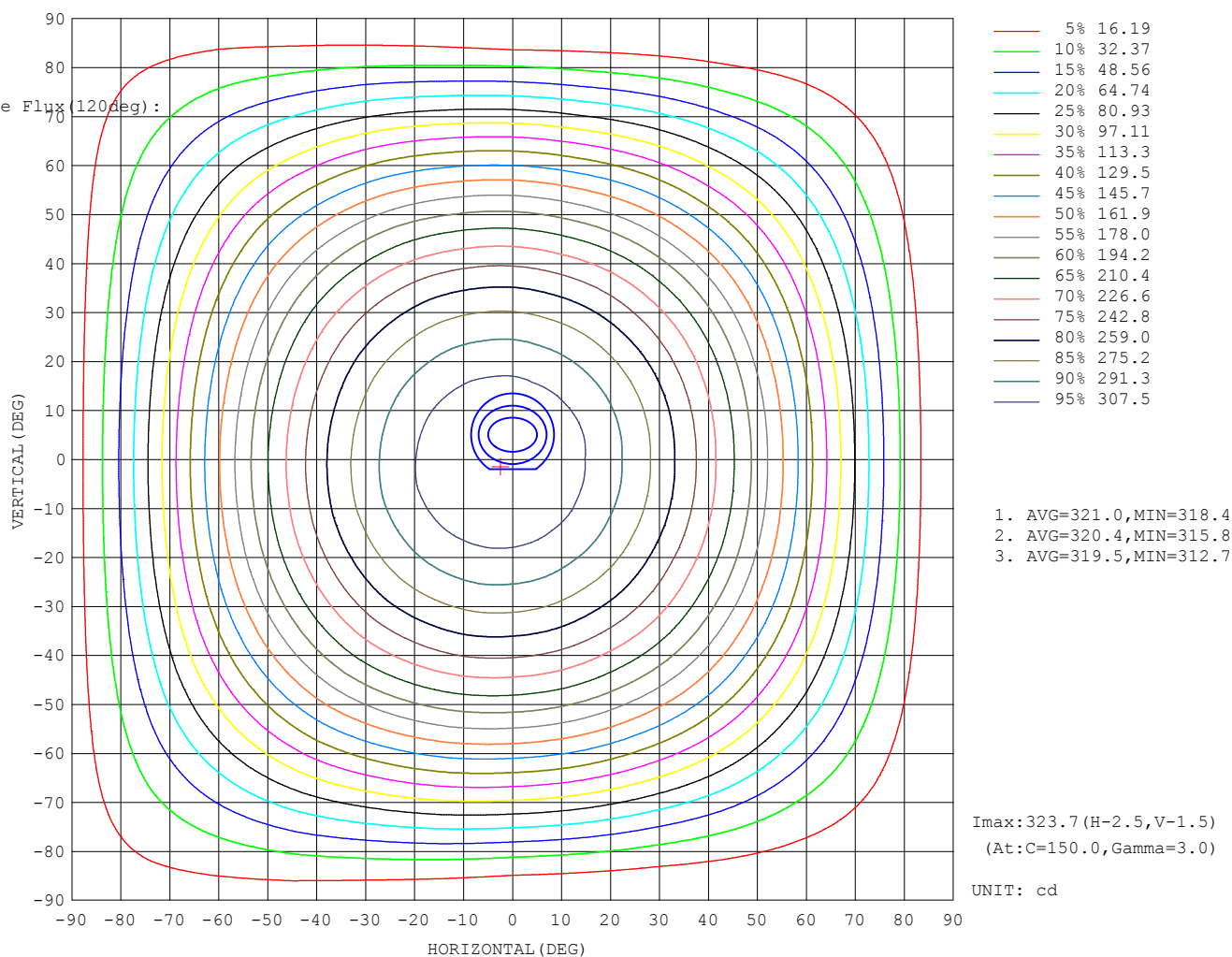
%lamp = 52.4%

Conical surface Flux(120deg):

743.4 lm

%lum = 77.7%

%lamp = 77.7%



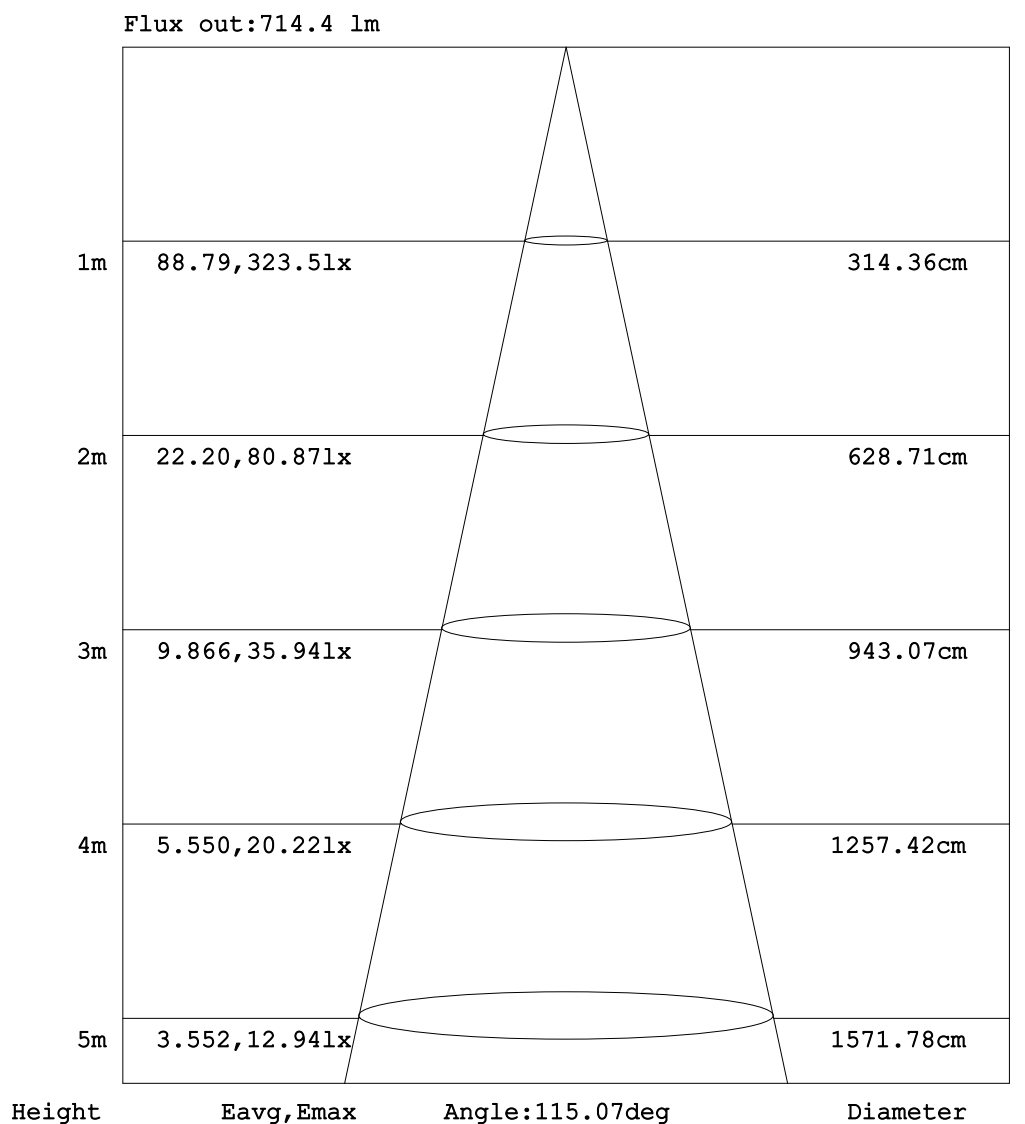
C Range: 0 - 360DEG
C Interval: 15.0DEG
Test Speed: HIGH
Temperature:24.7DEG
Operators:Lingxin Xie
Test Date:2022-05-27

γ Range: 0 - 180DEG
 γ Interval: 1.0DEG
Test System:EVERFINE GO-2000A_V1 SYSTEM V2.0.291
Humidity:54.2%
Test Distance:10.149m [K=1.0000]
Remarks:

Checker: Jianfei Wu

Assessor: Lijian Jiang

AAI Figure



Note:The Curves indicate the illuminated area and the average illumination when the luminaire is at different distance.

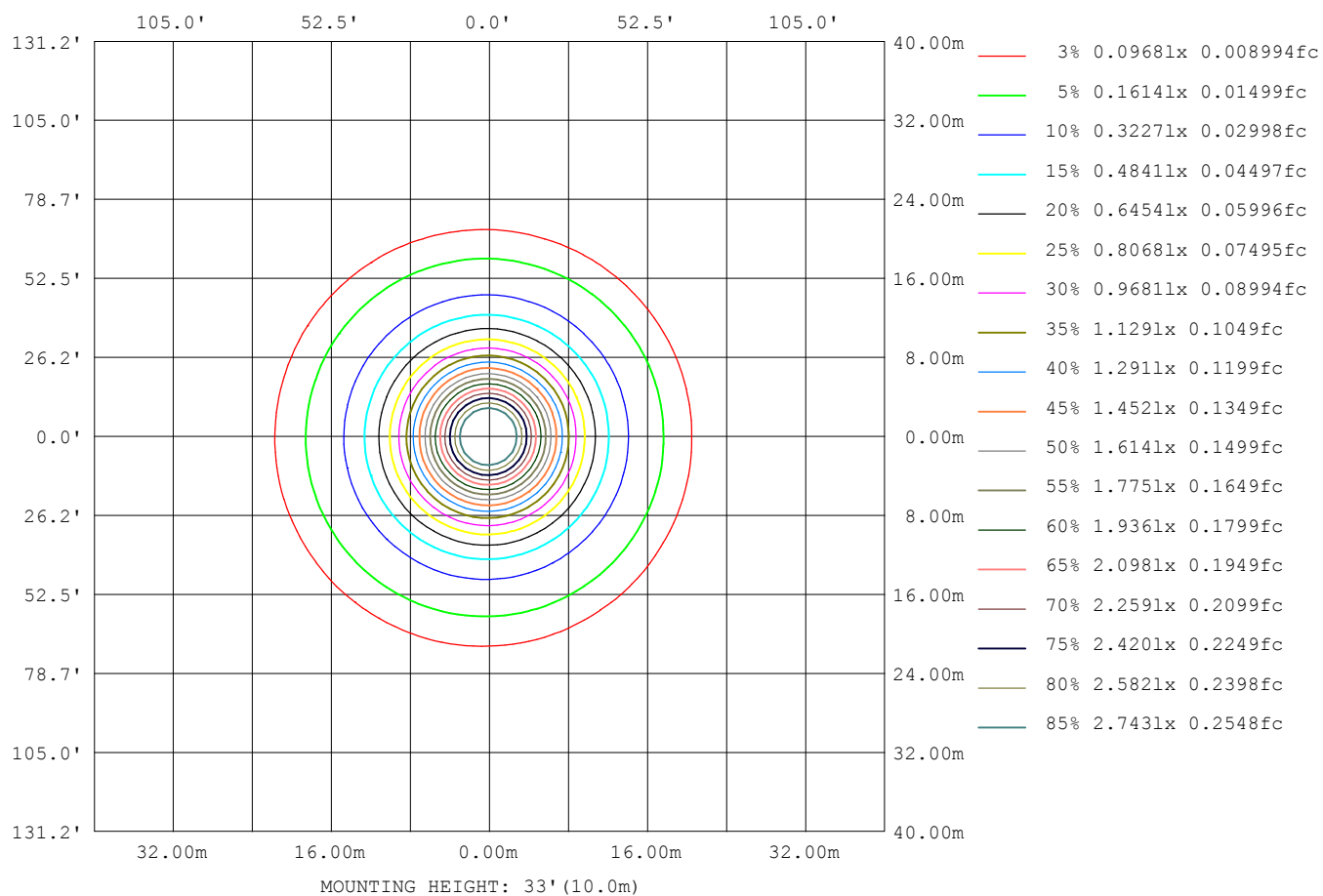
C Range: 0 - 360DEG
C Interval: 15.0DEG
Test Speed: HIGH
Temperature:24.7DEG
Operators:Lingxin Xie
Test Date:2022-05-27

γ Range: 0 - 180DEG
 γ Interval: 1.0DEG
Test System:EVERFINE GO-2000A_V1 SYSTEM V2.0.291
Humidity:54.2%
Test Distance:10.149m [K=1.0000]
Remarks:

Checker: Jianfei Wu

Assessor: Lijian Jiang

ISOLUX DIAGRAM



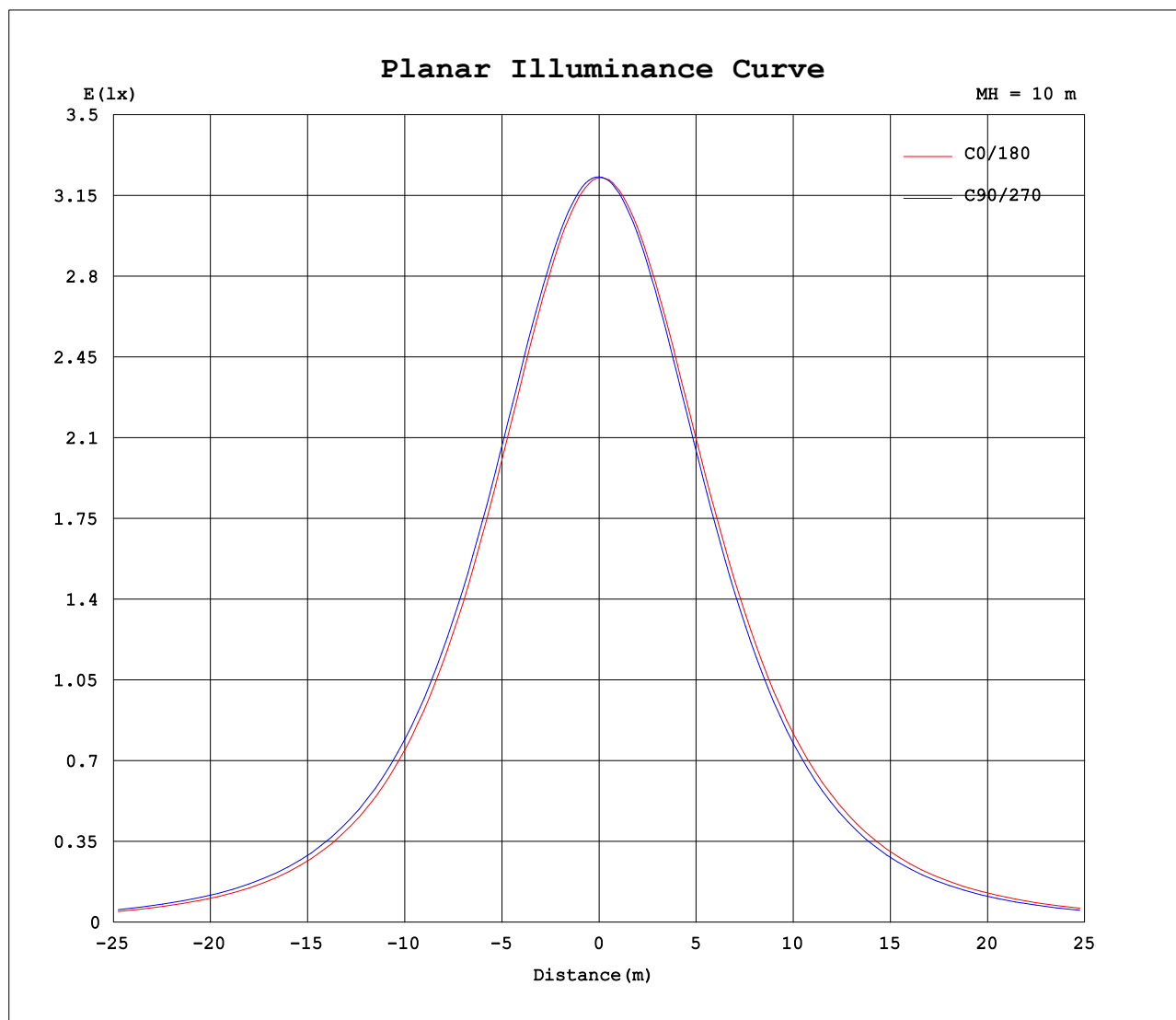
C Range: 0 - 360DEG
C Interval: 15.0DEG
Test Speed: HIGH
Temperature: 24.7DEG
Operators: Lingxin Xie
Test Date: 2022-05-27

Checker: Jianfei Wu

γ Range: 0 - 180DEG
 γ Interval: 1.0DEG
Test System: EVERFINE GO-2000A_V1 SYSTEM V2.0.291
Humidity: 54.2%
Test Distance: 10.149m [K=1.0000]
Remarks:

Assessor: Lijian Jiang

Planar Illuminance Curve



C Range: 0 - 360DEG
C Interval: 15.0DEG
Test Speed: HIGH
Temperature: 24.7DEG
Operators: Lingxin Xie
Test Date: 2022-05-27

Checker: Jianfei Wu

γ Range: 0 - 180DEG
 γ Interval: 1.0DEG
Test System: EVERFINE GO-2000A_V1 SYSTEM V2.0.291
Humidity: 54.2%
Test Distance: 10.149m [K=1.0000]
Remarks:

Assessor: Lijian Jiang

LUMINOUS DISTRIBUTION INTENSITY DATA

Table--1

UNIT: cd

C (DEG) γ (DEG)	0	15	30	45	60	75	90	105	120	135	150	165	180	195	210	225	240	255	270
0	323	323	323	323	323	323	323	323	323	323	323	323	323	323	323	323	323	323	323
5	320	320	321	321	321	322	322	323	323	323	323	323	323	323	322	322	322	322	322
10	315	315	316	316	317	318	319	319	320	320	321	321	320	320	320	319	318	318	318
15	307	308	308	309	310	311	312	313	314	315	315	316	315	314	314	313	313	311	311
20	297	298	298	300	301	302	304	305	306	307	308	308	307	306	306	305	304	302	301
25	284	285	286	288	289	291	293	294	295	297	297	298	297	296	295	294	293	291	290
30	269	270	271	273	275	277	279	281	282	284	284	285	284	283	282	281	279	277	276
35	252	253	254	257	258	261	263	265	267	269	269	270	269	268	267	265	264	261	259
40	233	234	235	238	240	243	245	247	249	251	252	252	252	250	249	247	245	243	241
45	212	213	214	217	219	222	224	227	229	231	232	233	232	230	229	227	225	222	220
50	188	190	191	194	196	199	202	205	207	209	210	211	210	209	207	205	203	199	197
55	163	165	166	169	171	175	177	181	183	186	186	187	186	185	183	181	178	175	172
60	136	138	139	142	145	149	151	155	157	160	161	162	161	159	158	155	152	148	146
65	109	110	111	114	117	121	124	128	130	133	134	135	134	132	131	127	124	120	118
70	80.1	81.7	82.9	85.8	88.2	92.0	94.9	98.9	101	105	106	107	106	104	102	98.5	95.7	91.6	88.8
75	52.8	54.0	54.9	57.6	59.6	63.1	66.0	69.9	72.7	76.0	77.4	78.5	77.9	75.8	73.7	69.9	66.9	62.8	60.1
80	28.7	29.7	30.2	31.9	33.3	36.1	38.5	42.4	45.3	48.8	50.2	51.4	50.7	48.7	46.5	42.6	39.6	35.8	33.4
85	11.7	12.1	12.2	12.7	12.9	14.3	15.9	19.1	21.7	24.7	26.2	27.2	26.7	24.9	23.1	19.9	17.2	14.0	10.2
90	3.80	3.77	3.41	3.05	2.43	2.02	0.42	3.99	5.80	7.74	8.83	9.64	9.49	8.52	7.41	5.53	4.00	2.25	0.15
95	1.93	1.75	1.36	0.87	0.39	0.21	0.18	0.21	0.63	1.44	2.03	2.44	2.40	2.07	1.63	0.93	0.34	0.20	0.21
100	0.95	0.76	0.62	0.36	0.33	0.32	0.30	0.30	0.29	0.28	0.34	0.54	0.47	0.38	0.30	0.24	0.26	0.28	0.28
105	0.53	0.49	0.44	0.42	0.38	0.41	0.38	0.39	0.36	0.37	0.34	0.35	0.31	0.30	0.33	0.31	0.35	0.31	0.38
110	0.51	0.55	0.51	0.53	0.51	0.53	0.51	0.52	0.49	0.47	0.45	0.45	0.40	0.38	0.42	0.38	0.44	0.45	0.49
115	0.61	0.65	0.60	0.64	0.60	0.63	0.59	0.62	0.60	0.59	0.58	0.56	0.52	0.50	0.53	0.50	0.55	0.58	0.61
120	0.72	0.76	0.71	0.76	0.74	0.76	0.70	0.73	0.71	0.70	0.69	0.67	0.61	0.59	0.62	0.60	0.67	0.70	0.72
125	0.83	0.87	0.83	0.85	0.81	0.85	0.80	0.83	0.79	0.80	0.75	0.77	0.72	0.69	0.73	0.72	0.78	0.77	0.81
130	0.91	0.96	0.94	0.95	0.94	0.95	0.95	0.94	0.92	0.92	0.90	0.88	0.81	0.77	0.83	0.81	0.87	0.90	0.92
135	1.01	1.04	0.99	1.05	0.99	1.04	0.99	1.03	0.97	1.00	0.93	0.97	0.93	0.90	0.93	0.92	0.97	0.95	1.00
140	1.12	1.14	1.12	1.13	1.12	1.13	1.12	1.13	1.10	1.09	1.02	1.06	1.00	0.98	1.01	0.99	1.06	1.09	1.11
145	1.18	1.22	1.18	1.20	1.17	1.21	1.18	1.19	1.15	1.17	1.14	1.15	1.10	1.11	1.11	1.12	1.15	1.15	1.17
150	1.23	1.29	1.26	1.27	1.22	1.27	1.24	1.26	1.20	1.23	1.20	1.22	1.17	1.13	1.17	1.16	1.22	1.18	1.24
155	1.32	1.35	1.33	1.34	1.32	1.33	1.31	1.33	1.32	1.31	1.29	1.29	1.24	1.20	1.25	1.22	1.27	1.29	1.31
160	1.36	1.40	1.36	1.38	1.33	1.39	1.33	1.38	1.33	1.36	1.32	1.35	1.32	1.31	1.33	1.32	1.34	1.32	1.36
165	1.40	1.43	1.41	1.42	1.41	1.42	1.39	1.42	1.39	1.40	1.38	1.40	1.39	1.34	1.38	1.33	1.40	1.36	1.40
170	1.46	1.47	1.42	1.45	1.41	1.44	1.42	1.45	1.41	1.45	1.40	1.45	1.44	1.40	1.43	1.40	1.45	1.40	1.45
175	1.51	1.49	1.49	1.48	1.50	1.49	1.50	1.48	1.49	1.49	1.46	1.49	1.49	1.42	1.47	1.44	1.47	1.46	1.49
180	1.52	1.50	1.50	1.50	1.51	1.51	1.51	1.51	1.51	1.52	1.50	1.52	1.54	1.51	1.52	1.52	1.51	1.51	1.52

C Range: 0 - 360DEG
C Interval: 15.0DEG
Test Speed: HIGH
Temperature:24.7DEG
Operators:Lingxin Xie
Test Date:2022-05-27

γ Range: 0 - 180DEG
γ Interval: 1.0DEG
Test System:EVERFINE GO-2000A_V1 SYSTEM V2.0.291
Humidity:54.2%
Test Distance:10.149m [K=1.0000]
Remarks:

Checker: Jianfei Wu

Assessor: Lijian Jiang

LUMINOUS DISTRIBUTION INTENSITY DATA

Table--2

UNIT: cd

C (DEG) γ (DEG)	285	300	315	330	345													
0	323	323	323	323	323													
5	321	321	321	321	321													
10	317	316	316	316	316													
15	310	309	309	308	308													
20	300	299	299	298	298													
25	288	287	286	286	285													
30	274	273	271	271	270													
35	257	256	254	254	253													
40	238	237	235	234	234													
45	217	215	214	213	212													
50	194	192	190	190	189													
55	169	167	165	164	163													
60	142	141	138	138	137													
65	114	112	110	110	109													
70	85.4	83.7	81.5	81.1	80.2													
75	56.9	55.4	53.6	53.4	52.8													
80	30.9	29.9	28.7	28.9	28.6													
85	10.8	10.9	10.9	11.5	11.6													
90	1.57	2.32	2.88	3.52	3.83													
95	0.23	0.70	1.31	1.79	2.04													
100	0.30	0.31	0.49	0.61	0.99													
105	0.36	0.40	0.38	0.44	0.53													
110	0.49	0.51	0.49	0.50	0.50													
115	0.58	0.61	0.61	0.61	0.61													
120	0.70	0.72	0.70	0.71	0.70													
125	0.78	0.83	0.77	0.81	0.77													
130	0.91	0.94	0.91	0.92	0.92													
135	0.99	1.02	0.99	1.01	0.97													
140	1.11	1.10	1.10	1.10	1.11													
145	1.13	1.18	1.14	1.18	1.13													
150	1.20	1.24	1.20	1.23	1.20													
155	1.30	1.30	1.29	1.30	1.31													
160	1.33	1.36	1.32	1.36	1.34													
165	1.39	1.41	1.39	1.41	1.40													
170	1.41	1.45	1.40	1.45	1.42													
175	1.49	1.49	1.48	1.49	1.50													
180	1.51	1.51	1.51	1.52	1.52													

C Range: 0 - 360DEG
 C Interval: 15.0DEG
 Test Speed: HIGH
 Temperature:24.7DEG
 Operators:Lingxin Xie
 Test Date:2022-05-27

Checker: Jianfei Wu

γ Range: 0 - 180DEG
 γ Interval: 1.0DEG
 Test System:EVERFINE GO-2000A_V1 SYSTEM V2.0.291
 Humidity:54.2%
 Test Distance:10.149m [K=1.0000]
 Remarks:

Assessor: Lijian Jiang