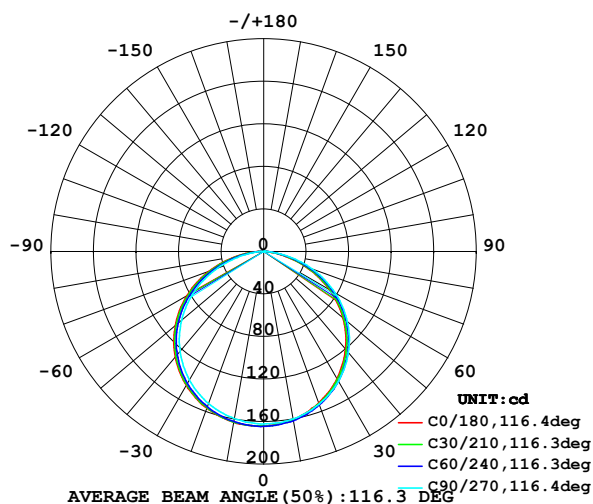


LUMINAIRE PHOTOMETRIC TEST REPORT

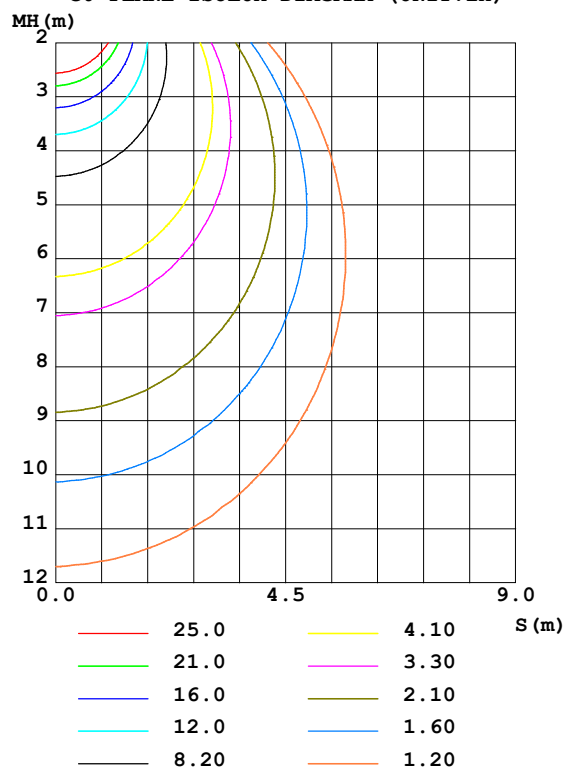
Test:U:24.00V I:0.2150A P:5.160W PF:1.000 Lamp Flux:496.123x1 lm		
NAME: LED Soft light bar	SUR.:0.08m*1.0m	SERIAL No.:

DATA OF LAMP		PHOTOMETRIC DATA Eff: 94.22 lm/W			
MODEL	EKF5148HL90	I _{max} (cd)	164.6	S/MH (C0/180)	1.32
NOMINAL POWER(W)	/	LOR(%)	98.0	S/MH (C90/270)	1.28
RATED VOLTAGE(V)	24	TOTAL FLUX(lm)	486.20	η UP,DN(C0-180)	0.2,48.9
NOMINAL FLUX(lm)	496.123	CIE CLASS	DIRECT	η UP,DN(C180-360)	0.1,48.8
LAMPS INSIDE	1	η up (%)	0.3	CIBSE SHR NOM	1.25
TEST VOLTAGE(V)	24	η down (%)	97.7	CIBSE SHR MAX	1.35

LUMINOUS INTENSITY DISTRIBUTION DIAGRAM



C0 PLANE ISOLUX DIAGRAM (UNIT:lx)



C Range: 0 - 360DEG
 C Interval: 15.0DEG
 Test Speed: HIGH
 Temperature: 24.1DEG
 Operators: Bo Zou
 Test Date: 2021-05-17

γ Range: 0 - 180DEG
 γ Interval: 1.0DEG
 Test System: EVERFINE GO-2000A_V1 SYSTEM V2.0.291
 Humidity: 33.6%
 Test Distance: 10.149m [K=1.0000]
 Remarks: standard: GB/T 9468-2008

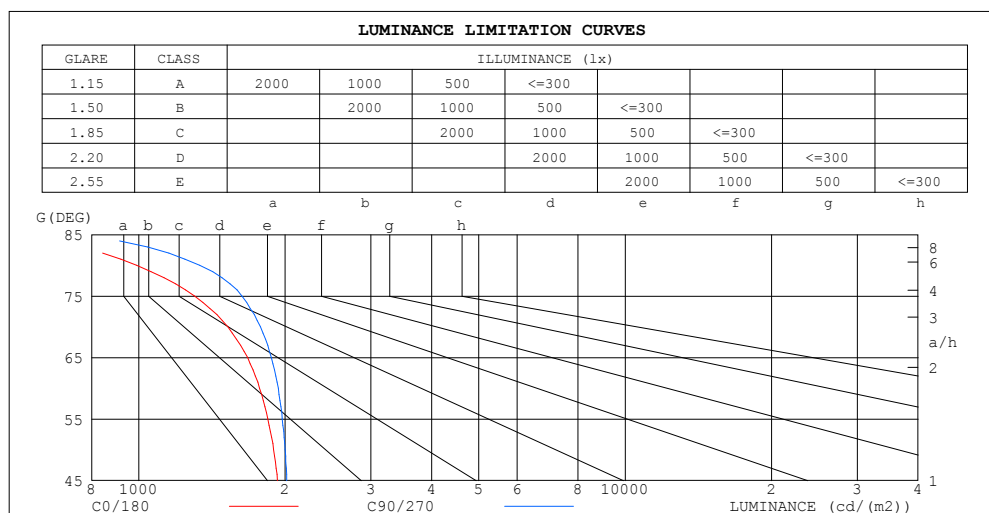
Checker: Bo Zou

Assessor: Chunbo Zou

ZONAL FLUX DIAGRAM AND LUMINANCE LIMITATION CURVES

ZONAL FLUX DIAGRAM:

γ	C0	C45	C90	C135	C180	C225	C270	C315	γ	Φ zone	Φ total	%lum, lamp
10	160.4	161.2	159.9	160.2	162.9	162.6	159.6	158.1	0- 10	15.43	15.43	3.17,3.11
20	151.7	153.0	152.8	153.9	156.7	155.7	152.1	149.7	10- 20	44.43	59.86	12.3,12.1
30	138.0	139.8	140.8	142.8	145.4	143.8	139.7	136.9	20- 30	67.99	127.8	26.3,25.8
40	120.0	122.1	124.0	126.6	129.5	127.6	122.5	118.9	30- 40	83.09	210.9	43.4,42.5
50	97.29	99.96	102.8	106.0	108.5	106.2	100.9	97.03	40- 50	87.54	298.5	61.4,60.2
60	70.82	73.91	77.41	81.22	83.56	80.77	75.21	71.26	50- 60	80.30	378.8	77.9,76.3
70	41.69	44.46	48.68	53.00	54.91	51.74	46.32	42.28	60- 70	61.78	440.6	90.6,88.8
80	13.76	15.78	18.53	23.79	25.26	22.01	17.41	14.54	70- 80	34.91	475.5	97.8,95.8
90	0.6845	0.5492	0	2.719	3.266	1.848	0	0.7647	80- 90	9.166	484.6	99.7,97.7
100	0.0441	0.0367	0	0.0074	0	0	0.0001	0	90-100	0.2664	484.9	99.7,97.7
110	0.0733	0.1323	0.0586	0.1028	0.0516	0.0512	0.1028	0.0587	100-110	0.0411	484.9	99.7,97.7
120	0.1761	0.2350	0.1689	0.2129	0.1615	0.1321	0.2056	0.1615	110-120	0.1242	485.1	99.8,97.8
130	0.2730	0.3379	0.2717	0.3012	0.2498	0.2129	0.3085	0.2376	120-130	0.2031	485.3	99.8,97.8
140	0.3964	0.4333	0.3889	0.3965	0.3524	0.3010	0.3892	0.3230	130-140	0.2482	485.5	99.9,97.9
150	0.4550	0.5038	0.4185	0.4628	0.4333	0.3876	0.4626	0.4001	140-150	0.2540	485.8	99.9,97.9
160	0.5416	0.5371	0.5190	0.5286	0.4993	0.5213	0.5286	0.5140	150-160	0.2230	486.0	100,98
170	0.5383	0.5408	0.5290	0.5330	0.5337	0.5286	0.5393	0.5394	160-170	0.1510	486.1	100,98
180	0.5433	0.5433	0.5360	0.5360	0.5433	0.5360	0.5360	0.5360	170-180	0.0511	486.2	100,98
DEG	LUMINOUS INTENSITY:cd									UNIT:lm		



C Range: 0 - 360DEG
 C Interval: 15.0DEG
 Test Speed: HIGH
 Temperature:24.1DEG
 Operators:Bo Zou
 Test Date:2021-05-17

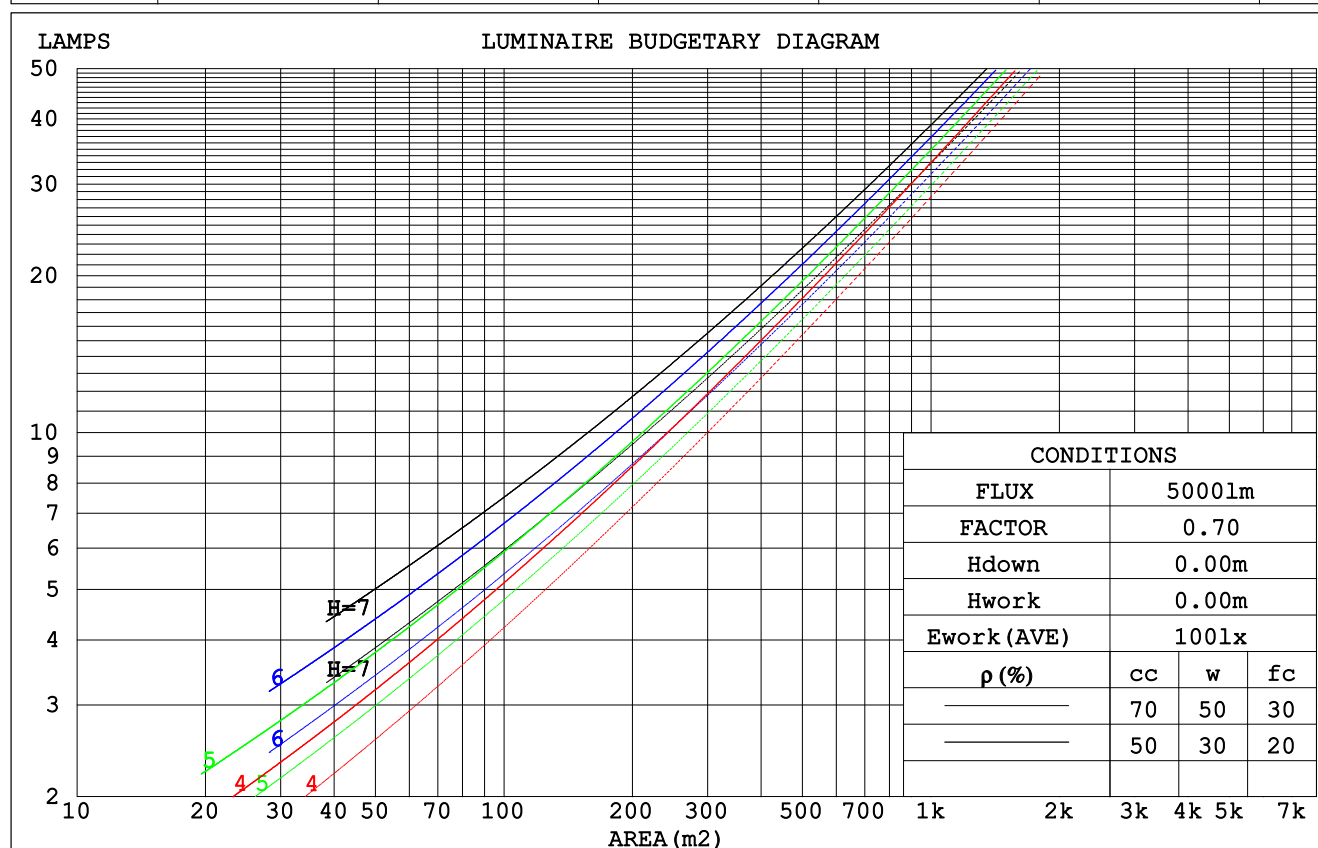
γ Range: 0 - 180DEG
 γ Interval: 1.0DEG
 Test System:EVERFINE GO-2000A_V1 SYSTEM V2.0.291
 Humidity:33.6%
 Test Distance:10.149m [K=1.0000]
 Remarks: standard: GB/T 9468-2008

Checker: Bo Zou

Assessor: Chunbo Zou

CU AND LUMINAIRE BUDGETARY ESTIMATE DIAGRAM

pcc	80%			70%			50%			30%			10%			0
pw	50%	30%	10%	50%	30%	10%	50%	30%	10%	50%	30%	10%	50%	30%	10%	0
pfc	20%			20%			20%			20%			20%			0
RCR	RCR:Room Cavity Ratio						Coefficients of Utilization(CU)									
0.0	1.17	1.17	1.17	1.14	1.14	1.14	1.09	1.09	1.09	1.04	1.04	1.04	.00	.00	.00	.98
1.0	1.02	.97	.93	.99	.95	.92	.95	.92	.89	.91	.89	.86	.88	.85	.84	.81
2.0	.88	.81	.76	.86	.80	.75	.83	.78	.73	.80	.75	.71	.77	.73	.70	.67
3.0	.77	.69	.63	.76	.68	.62	.73	.66	.61	.70	.64	.60	.67	.63	.59	.57
4.0	.68	.60	.53	.67	.59	.53	.64	.57	.52	.62	.56	.51	.60	.55	.50	.48
5.0	.61	.52	.45	.60	.51	.45	.58	.50	.45	.56	.49	.44	.54	.48	.44	.41
6.0	.55	.46	.40	.54	.45	.39	.52	.45	.39	.50	.44	.39	.49	.43	.38	.36
7.0	.50	.41	.35	.49	.41	.35	.47	.40	.34	.46	.39	.34	.44	.38	.34	.32
8.0	.45	.37	.31	.44	.36	.31	.43	.36	.31	.42	.35	.30	.41	.35	.30	.28
9.0	.41	.33	.28	.41	.33	.28	.40	.33	.28	.39	.32	.27	.38	.32	.27	.25
10.0	.38	.30	.25	.38	.30	.25	.37	.30	.25	.36	.29	.25	.35	.29	.25	.23



C Range: 0 - 360DEG
 C Interval: 15.0DEG
 Test Speed: HIGH
 Temperature: 24.1DEG
 Operators: Bo Zou
 Test Date: 2021-05-17

γ Range: 0 - 180DEG
 γ Interval: 1.0DEG
 Test System: EVERFINE GO-2000A_V1 SYSTEM V2.0.291
 Humidity: 33.6%
 Test Distance: 10.149m [K=1.0000]
 Remarks: standard: GB/T 9468-2008

Checker: Bo Zou

Assessor: Chunbo Zou

WEC AND CCEC

pcc	80%			70%			50%			30%			10%			0
pw	50%	30%	10%	50%	30%	10%	50%	30%	10%	50%	30%	10%	50%	30%	10%	0
pfc	20%			20%			20%			20%			20%			0
RCR	RCR:Room Cavity Ratio						Wall Exitance Coefficients (WEC)									
0.0																
1.0	.306	.174	.055	.299	.171	.054	.286	.164	.052	.274	.158	.051	.263	.152	.049	
2.0	.289	.158	.049	.282	.156	.048	.271	.151	.047	.260	.146	.046	.250	.141	.045	
3.0	.267	.142	.043	.262	.140	.042	.251	.136	.041	.242	.132	.041	.233	.129	.040	
4.0	.246	.128	.038	.241	.126	.037	.232	.123	.037	.224	.120	.036	.216	.117	.036	
5.0	.228	.116	.034	.223	.115	.033	.215	.112	.033	.208	.109	.033	.200	.107	.032	
6.0	.211	.106	.030	.207	.105	.030	.200	.102	.030	.193	.100	.029	.187	.098	.029	
7.0	.196	.097	.027	.193	.096	.027	.186	.094	.027	.180	.092	.027	.174	.091	.027	
8.0	.183	.089	.025	.180	.089	.025	.174	.087	.025	.169	.086	.025	.164	.084	.024	
9.0	.172	.083	.023	.169	.082	.023	.164	.081	.023	.159	.080	.023	.154	.078	.023	
10.0	.161	.077	.021	.159	.077	.021	.154	.075	.021	.150	.074	.021	.145	.073	.021	

pcc	80%			70%			50%			30%			10%			0	
pw	50%	30%	10%	50%	30%	10%	50%	30%	10%	50%	30%	10%	50%	30%	10%	0	
pfc	20%			20%			20%			20%			20%			0	
RCR	RCR:Room Cavity Ratio						Ceiling Cavity Exitance Coefficients (CCEC)										
0.0	.189	.189	.189	.162	.162	.162	.110	.110	.110	.063	.063	.063	.020	.020	.020		
1.0	.179	.155	.134	.153	.133	.115	.105	.092	.080	.060	.053	.046	.019	.017	.015		
2.0	.172	.132	.098	.147	.113	.085	.101	.078	.059	.058	.046	.035	.019	.015	.011		
3.0	.164	.114	.075	.141	.099	.065	.097	.069	.046	.056	.040	.027	.018	.013	.009		
4.0	.157	.101	.059	.134	.088	.052	.092	.061	.036	.053	.036	.021	.017	.012	.007		
5.0	.149	.091	.048	.128	.079	.042	.088	.055	.030	.051	.032	.018	.017	.011	.006		
6.0	.142	.083	.041	.122	.072	.035	.084	.050	.025	.049	.030	.015	.016	.010	.005		
7.0	.136	.076	.035	.117	.066	.030	.081	.046	.022	.047	.027	.013	.015	.009	.004		
8.0	.129	.071	.030	.111	.061	.027	.077	.043	.019	.045	.025	.011	.014	.008	.004		
9.0	.123	.066	.027	.106	.057	.024	.074	.040	.017	.043	.024	.010	.014	.008	.003		
10.0	.118	.062	.024	.102	.054	.021	.070	.038	.015	.041	.022	.009	.013	.007	.003		

C Range: 0 - 360DEG
C Interval: 15.0DEG
Test Speed: HIGH
Temperature:24.1DEG
Operators:Bo Zou
Test Date:2021-05-17

γ Range: 0 - 180DEG
γ Interval: 1.0DEG
Test System:EVERFINE GO-2000A_V1 SYSTEM V2.0.291
Humidity:33.6%
Test Distance:10.149m [K=1.0000]
Remarks: standard: GB/T 9468-2008

Checker: Bo Zou

Assessor: Chunbo Zou

UGR(Unified Glare Rating) Table

ceiling/cavity	0.7	0.7	0.5	0.5	0.3	0.7	0.7	0.5	0.5	0.3
walls	0.5	0.3	0.5	0.3	0.3	0.5	0.3	0.5	0.3	0.3
working plane	0.2	0.2	0.2	0.2	0.2	0.2	0.2	0.2	0.2	0.2
Room dimensions	Viewed crosswise					Viewed endwise				
x = 2H y = 2H	14.9	16.4	15.2	16.6	16.8	15.2	16.7	15.5	17.0	17.2
3H	16.3	17.7	16.6	17.9	18.2	16.8	18.2	17.1	18.4	18.7
4H	16.8	18.1	17.1	18.4	18.6	17.4	18.7	17.7	19.0	19.2
6H	17.0	18.3	17.3	18.6	18.8	17.7	19.0	18.1	19.3	19.6
8H	17.1	18.3	17.4	18.6	18.9	17.8	19.1	18.2	19.4	19.7
12H	17.0	18.2	17.4	18.5	18.8	17.9	19.0	18.2	19.3	19.6
4H 2H	15.5	16.9	15.8	17.1	17.4	15.8	17.1	16.1	17.4	17.6
3H	17.1	18.3	17.4	18.6	18.9	17.5	18.7	17.9	19.0	19.3
4H	17.7	18.7	18.0	19.1	19.4	18.2	19.3	18.6	19.6	19.9
6H	18.0	19.0	18.4	19.3	19.7	18.7	19.7	19.1	20.0	20.4
8H	18.1	19.0	18.5	19.4	19.7	18.8	19.7	19.3	20.1	20.5
12H	18.1	18.9	18.5	19.3	19.7	18.9	19.7	19.3	20.1	20.5
8H 4H	17.9	18.8	18.3	19.2	19.6	18.4	19.3	18.8	19.7	20.1
6H	18.4	19.1	18.8	19.5	19.9	19.0	19.7	19.5	20.2	20.6
8H	18.5	19.1	19.0	19.6	20.0	19.2	19.9	19.7	20.3	20.8
12H	18.6	19.1	19.0	19.6	20.1	19.3	19.9	19.8	20.3	20.8
12H 4H	17.9	18.7	18.3	19.1	19.5	18.4	19.2	18.8	19.6	20.0
6H	18.4	19.1	18.9	19.5	19.9	19.0	19.7	19.5	20.1	20.6
8H	18.6	19.1	19.0	19.6	20.1	19.2	19.8	19.7	20.3	20.8
Variations with the observer position at spacings:										
S = 1.0H	+ 0.2 / - 0.2					+ 0.2 / - 0.2				
1.5H	+ 0.2 / - 0.4					+ 0.2 / - 0.3				
2.0H	+ 0.2 / - 0.3					+ 0.2 / - 0.3				

CIE Pub.117 Corrected 496.1 lm Total Lamp Luminous Flux.(8log(F/F0) = -2.4)

C Range: 0 - 360DEG
C Interval: 15.0DEG
Test Speed: HIGH
Temperature:24.1DEG
Operators:Bo Zou
Test Date:2021-05-17

γ Range: 0 - 180DEG
 γ Interval: 1.0DEG
Test System:EVERFINE GO-2000A_V1 SYSTEM V2.0.291
Humidity:33.6%
Test Distance:10.149m [K=1.0000]
Remarks: standard: GB/T 9468-2008

Checker: Bo Zou

Assessor: Chunbo Zou

UTILIZATION FACTORS TABLE

REFLECTANCE										
Ceiling	0.8	0.8	0.8	0.7	0.7	0.7	0.5	0.5	0.5	0
Walls	0.7	0.5	0.3	0.7	0.5	0.3	0.7	0.5	0.3	0
Working plane	0.2	0.2	0.2	0.2	0.2	0.2	0.2	0.2	0.2	0
ROOM INDEX	UTILIZATION FACTORS (PERCENT) $k(RI) \times RCR = 5$									
$k = 0.60$	56	44	37	55	44	37	54	43	37	31
0.80	66	54	47	64	54	47	63	53	46	39
1.00	74	63	56	73	62	55	70	64	55	48
1.25	81	70	63	79	70	63	77	68	62	55
1.50	86	76	69	84	75	68	81	73	67	60
2.00	93	84	78	91	83	77	87	81	75	68
2.50	97	89	83	94	87	82	91	85	80	72
3.00	100	93	88	98	91	86	94	89	84	76
4.00	104	98	94	101	96	92	97	93	90	81
5.00	106	101	97	104	100	96	99	96	93	84
ROOM INDEX	UF (total)									Direct
According to DIN EN 13032-2 2004			Suspended					SHRNOM = 1.25		

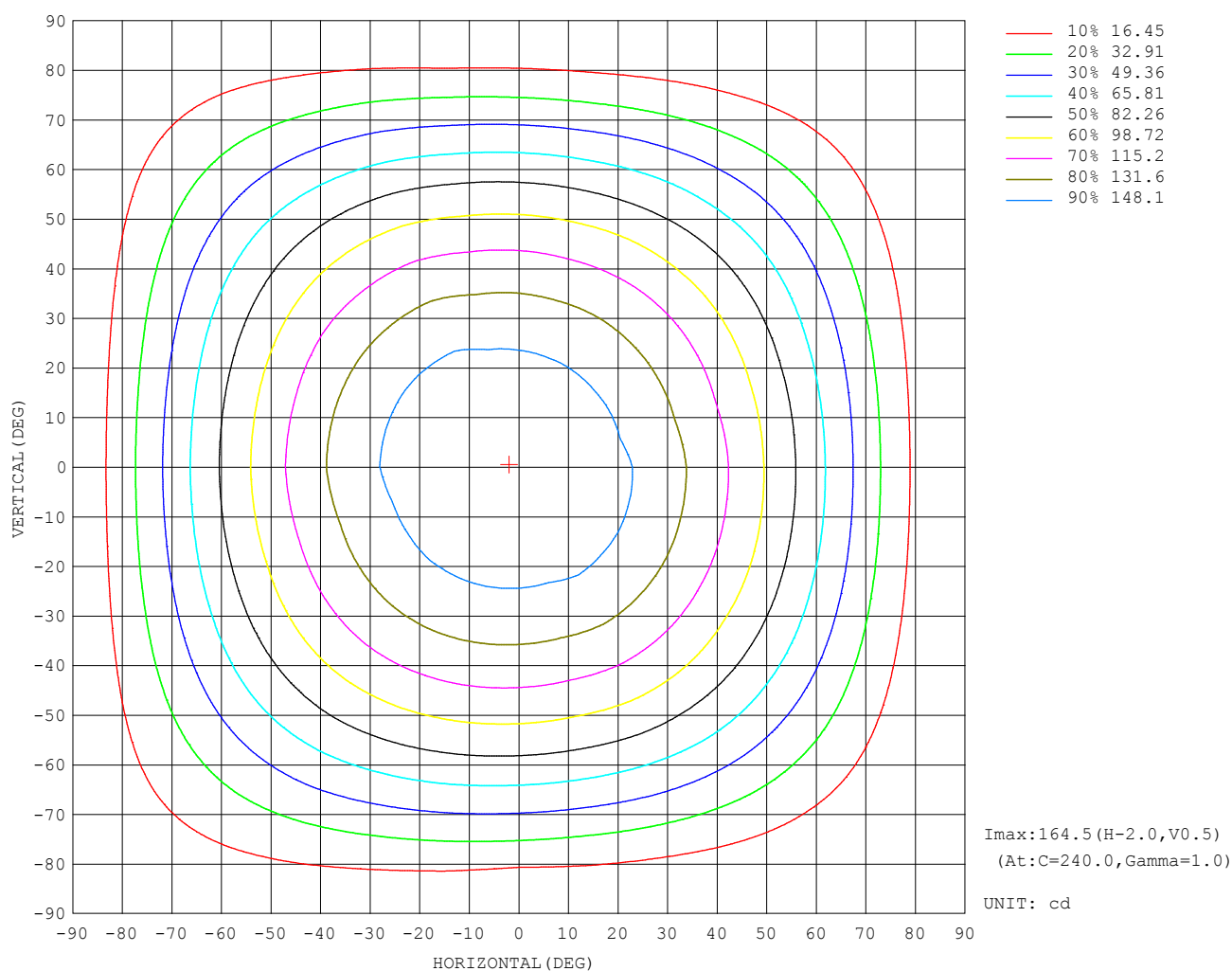
C Range: 0 - 360DEG
 C Interval: 15.0DEG
 Test Speed: HIGH
 Temperature: 24.1DEG
 Operators: Bo Zou
 Test Date: 2021-05-17

Checker: Bo Zou

γ Range: 0 - 180DEG
 γ Interval: 1.0DEG
 Test System: EVERFINE GO-2000A_V1 SYSTEM V2.0.291
 Humidity: 33.6%
 Test Distance: 10.149m [K=1.0000]
 Remarks: standard: GB/T 9468-2008

Assessor: Chunbo Zou

ISOCANDELA DIAGRAM



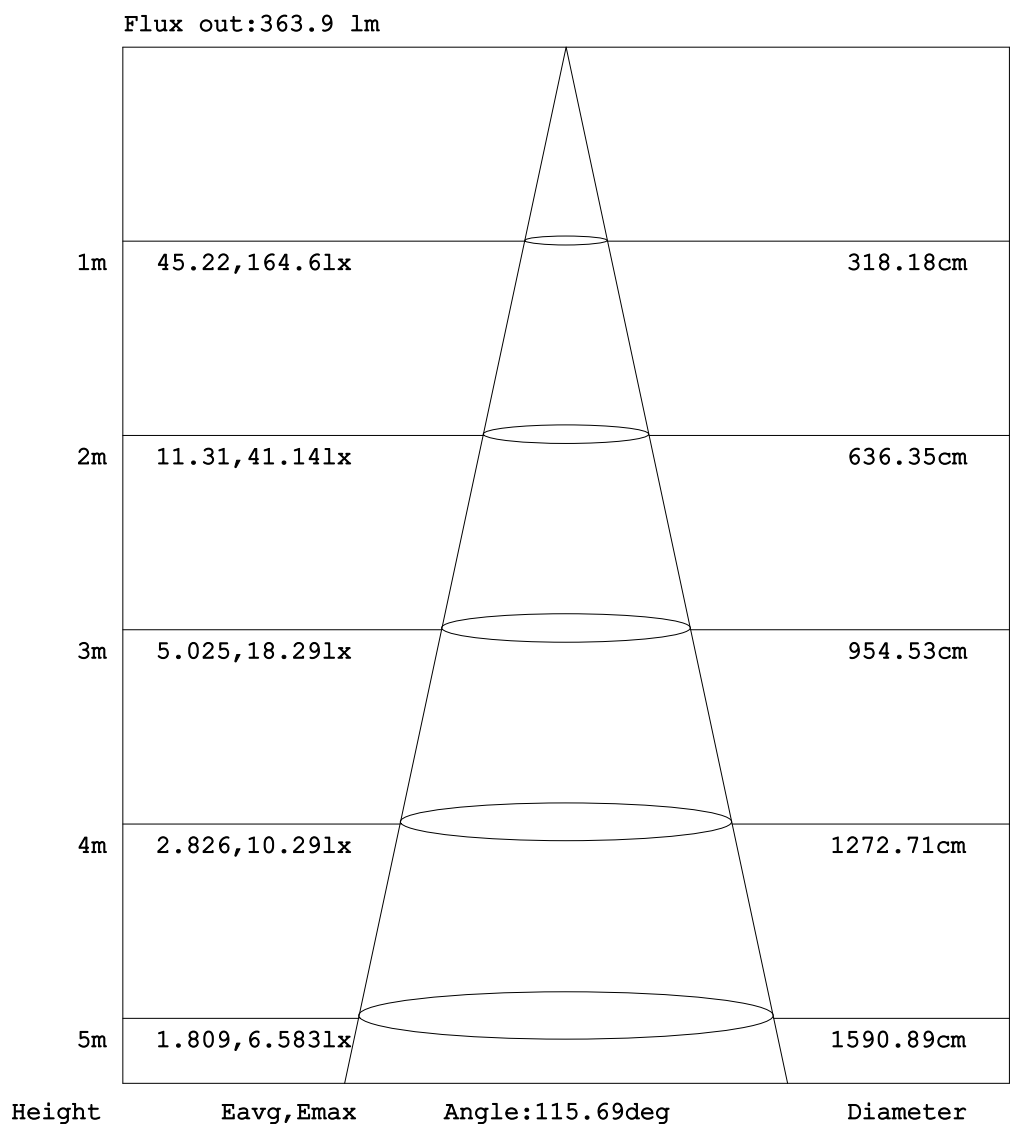
C Range: 0 - 360DEG
C Interval: 15.0DEG
Test Speed: HIGH
Temperature:24.1DEG
Operators:Bo Zou
Test Date:2021-05-17

γ Range: 0 - 180DEG
 γ Interval: 1.0DEG
Test System:EVERFINE GO-2000A_V1 SYSTEM V2.0.291
Humidity:33.6%
Test Distance:10.149m [K=1.0000]
Remarks: standard: GB/T 9468-2008

Checker: Bo Zou

Assessor: Chunbo Zou

AAI Figure



Note:The Curves indicate the illuminated area and the average illumination when the luminaire is at different distance.

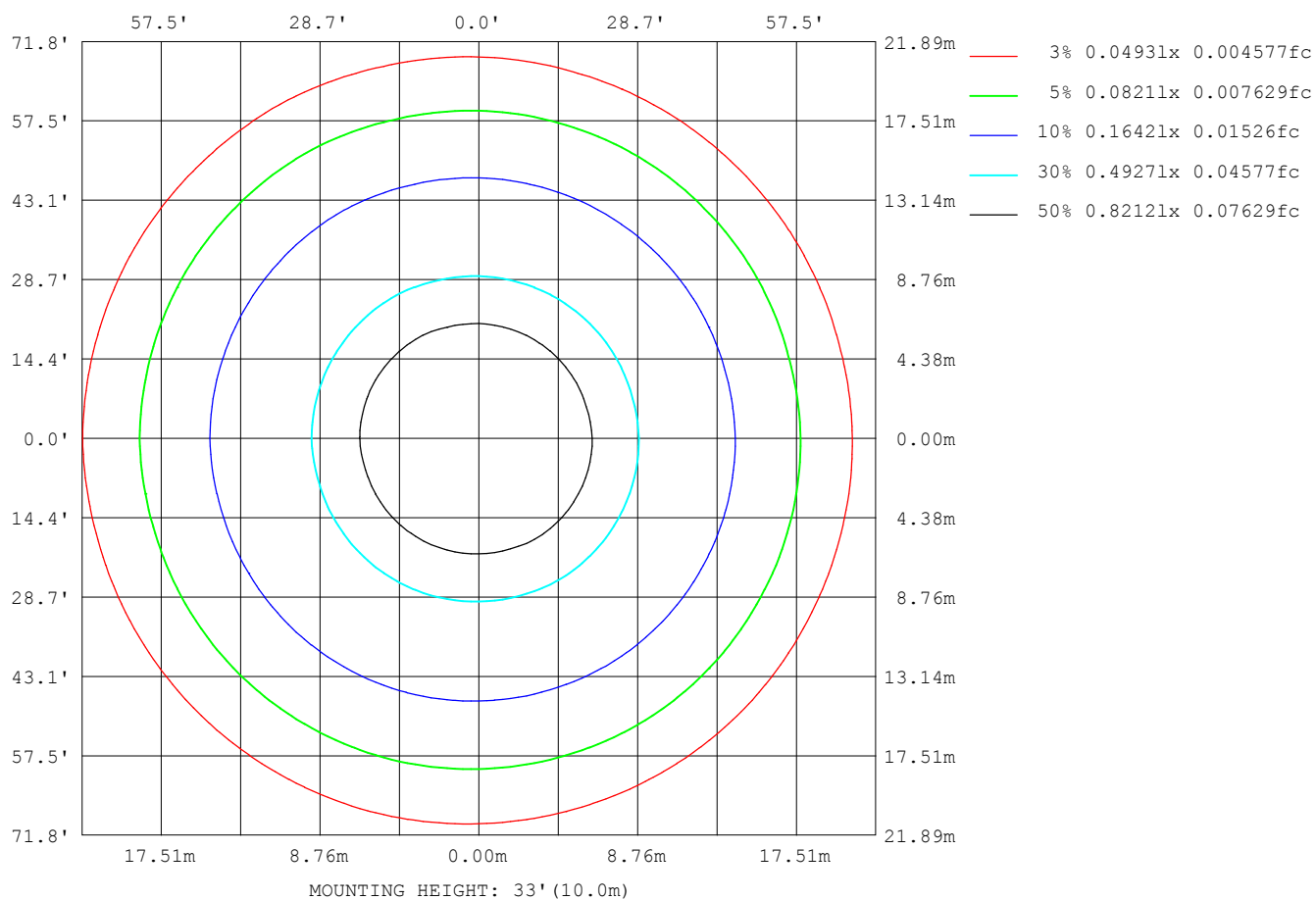
C Range: 0 - 360DEG
C Interval: 15.0DEG
Test Speed: HIGH
Temperature:24.1DEG
Operators:Bo Zou
Test Date:2021-05-17

γ Range: 0 - 180DEG
 γ Interval: 1.0DEG
Test System:EVERFINE GO-2000A_V1 SYSTEM V2.0.291
Humidity:33.6%
Test Distance:10.149m [K=1.0000]
Remarks: standard: GB/T 9468-2008

Checker: Bo Zou

Assessor: Chunbo Zou

ISOLUX DIAGRAM



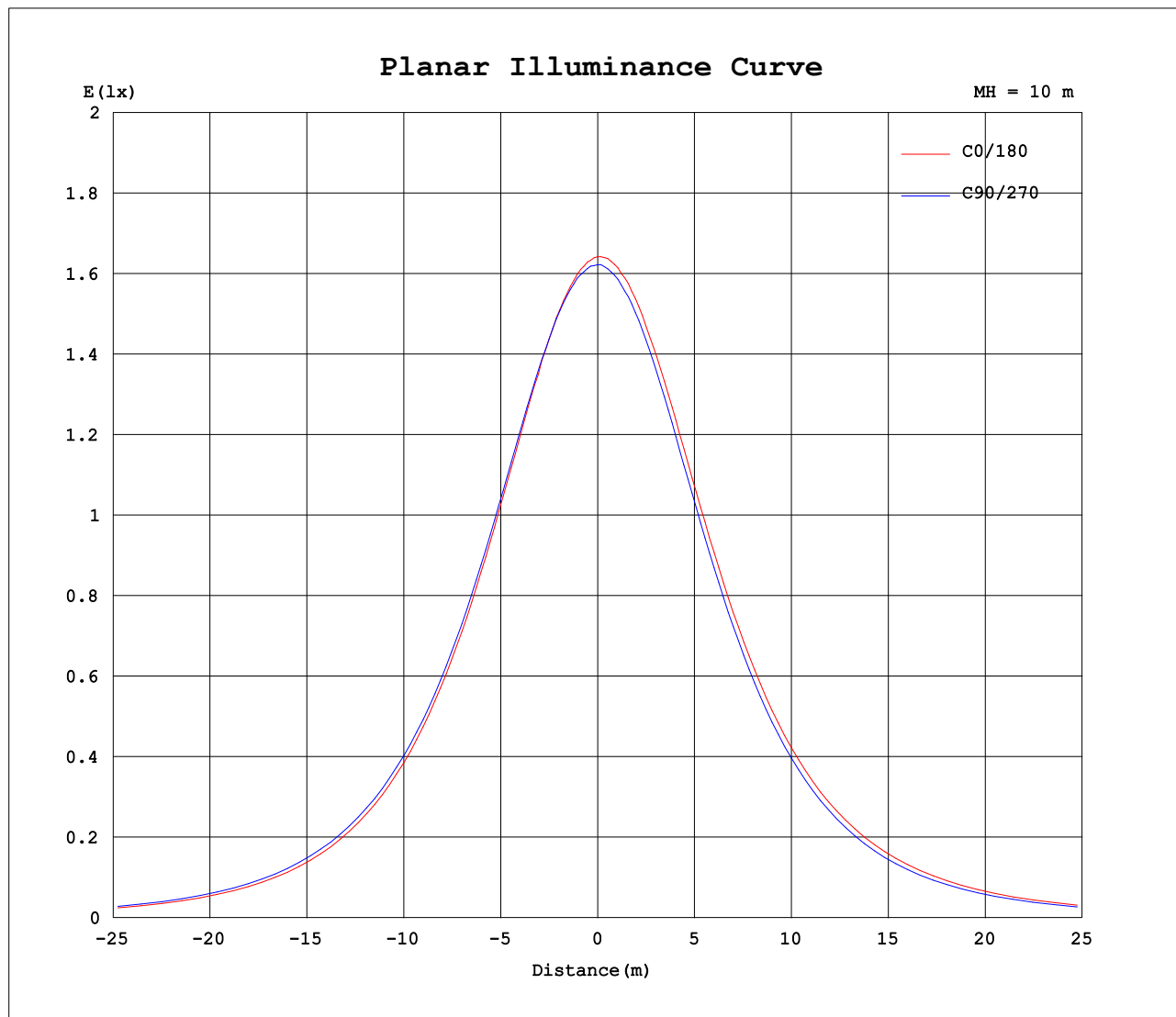
C Range: 0 - 360DEG
C Interval: 15.0DEG
Test Speed: HIGH
Temperature: 24.1DEG
Operators: Bo Zou
Test Date: 2021-05-17

Checker: Bo Zou

γ Range: 0 - 180DEG
 γ Interval: 1.0DEG
Test System: EVERFINE GO-2000A_V1 SYSTEM V2.0.291
Humidity: 33.6%
Test Distance: 10.149m [K=1.0000]
Remarks: standard: GB/T 9468-2008

Assessor: Chunbo Zou

Planar Illuminance Curve



C Range: 0 - 360DEG
C Interval: 15.0DEG
Test Speed: HIGH
Temperature: 24.1DEG
Operators: Bo Zou
Test Date: 2021-05-17

γ Range: 0 - 180DEG
 γ Interval: 1.0DEG
Test System: EVERFINE GO-2000A_V1 SYSTEM V2.0.291
Humidity: 33.6%
Test Distance: 10.149m [K=1.0000]
Remarks: standard: GB/T 9468-2008

Checker: Bo Zou

Assessor: Chunbo Zou

LUMINOUS DISTRIBUTION INTENSITY DATA

Table--1

UNIT: cd

C (DEG) γ (DEG)	0	15	30	45	60	75	90	105	120	135	150	165	180	195	210	225	240	255	270
0	164	164	164	164	164	162	162	162	162	162	162	162	164	164	164	164	164	162	162
5	163	163	163	163	163	162	162	162	161	162	162	162	164	164	164	164	164	162	161
10	160	160	161	161	162	160	160	160	160	160	160	161	163	163	163	163	162	160	160
15	157	157	157	158	158	157	157	157	158	157	158	158	160	160	160	160	160	157	157
20	152	152	152	153	153	152	153	153	153	154	154	154	157	157	156	156	155	153	152
25	145	146	146	147	148	147	147	148	148	149	149	149	152	152	151	150	150	147	147
30	138	138	139	140	141	140	141	141	142	143	143	143	145	145	145	144	143	141	140
35	129	130	131	132	133	132	133	134	134	135	136	136	138	138	137	136	136	133	132
40	120	120	121	122	123	123	124	125	126	127	127	127	130	129	129	128	127	124	122
45	109	110	110	112	113	113	114	115	116	117	117	118	120	119	119	118	116	114	112
50	97.3	98.1	98.5	100.0	101	102	103	104	105	106	106	107	108	108	107	106	105	102	101
55	84.5	85.2	86.1	87.4	88.6	89.5	90.5	92.0	93.2	94.0	94.6	95.1	96.6	95.8	95.2	93.9	92.7	90.2	88.5
60	70.8	71.6	72.4	73.9	75.2	76.0	77.4	78.9	80.2	81.2	81.7	82.2	83.6	82.8	81.9	80.8	79.5	76.9	75.2
65	56.6	57.2	58.0	59.5	60.8	61.9	63.3	65.1	66.3	67.4	68.0	68.4	69.5	68.8	67.9	66.5	65.2	62.6	61.0
70	41.7	42.3	43.1	44.5	45.9	47.1	48.7	50.4	51.7	53.0	53.6	54.1	54.9	54.2	53.2	51.7	50.4	47.8	46.3
75	27.0	27.5	28.3	29.6	30.9	32.1	33.8	35.5	36.9	38.2	38.8	39.3	39.9	39.1	38.1	36.7	35.1	32.9	31.4
80	13.8	14.2	14.7	15.8	16.7	18.0	18.5	21.2	22.6	23.8	24.4	24.8	25.3	24.4	23.5	22.0	20.6	18.1	17.4
85	4.32	4.51	4.73	5.24	5.85	6.66	5.34	8.89	10.2	11.2	11.8	12.2	12.3	11.6	10.8	9.58	8.42	7.07	5.94
90	0.68	0.61	0.62	0.55	0.61	0.75	0.00	1.62	2.22	2.72	3.12	3.35	3.27	2.83	2.41	1.85	1.40	1.00	0.00
95	0.16	0.08	0.11	0.01	0.00	0.00	0.00	0.00	0.00	0.00	0.06	0.02	0.03	0.07	0.01	0.02	0.00	0.00	0.00
100	0.04	0.03	0.02	0.04	0.00	0.02	0.00	0.02	0.00	0.01	0.00	0.00	0.00	0.00	0.00	0.00	0.00	0.00	0.00
105	0.05	0.07	0.04	0.07	0.07	0.08	0.06	0.07	0.03	0.05	0.00	0.04	0.01	0.00	0.01	0.00	0.02	0.00	0.04
110	0.07	0.13	0.07	0.13	0.06	0.13	0.06	0.12	0.05	0.10	0.06	0.10	0.05	0.03	0.07	0.05	0.08	0.06	0.10
115	0.14	0.19	0.15	0.19	0.13	0.18	0.13	0.17	0.11	0.15	0.08	0.15	0.11	0.05	0.12	0.05	0.13	0.07	0.15
120	0.18	0.24	0.18	0.23	0.17	0.25	0.17	0.22	0.15	0.21	0.15	0.19	0.16	0.10	0.17	0.13	0.19	0.14	0.21
125	0.24	0.29	0.24	0.29	0.23	0.29	0.23	0.27	0.20	0.27	0.18	0.25	0.21	0.15	0.22	0.18	0.24	0.18	0.25
130	0.27	0.34	0.27	0.34	0.28	0.34	0.27	0.32	0.26	0.30	0.24	0.30	0.25	0.19	0.26	0.21	0.29	0.24	0.31
135	0.32	0.39	0.32	0.38	0.32	0.38	0.32	0.37	0.29	0.35	0.29	0.35	0.30	0.26	0.32	0.26	0.34	0.28	0.35
140	0.40	0.44	0.39	0.43	0.38	0.42	0.39	0.40	0.37	0.40	0.32	0.38	0.35	0.29	0.36	0.30	0.38	0.32	0.39
145	0.40	0.47	0.40	0.46	0.40	0.45	0.40	0.46	0.38	0.43	0.38	0.43	0.39	0.32	0.40	0.37	0.43	0.38	0.43
150	0.45	0.51	0.44	0.50	0.43	0.49	0.42	0.48	0.41	0.46	0.40	0.46	0.43	0.38	0.44	0.39	0.46	0.40	0.46
155	0.54	0.53	0.54	0.54	0.54	0.53	0.51	0.52	0.51	0.50	0.43	0.48	0.47	0.40	0.48	0.41	0.49	0.43	0.49
160	0.54	0.55	0.53	0.54	0.54	0.54	0.52	0.53	0.53	0.53	0.54	0.54	0.50	0.51	0.51	0.52	0.52	0.53	0.53
165	0.54	0.55	0.53	0.54	0.54	0.54	0.52	0.53	0.53	0.53	0.54	0.54	0.53	0.52	0.53	0.53	0.52	0.52	0.54
170	0.54	0.55	0.53	0.54	0.54	0.54	0.53	0.53	0.53	0.53	0.54	0.54	0.53	0.53	0.54	0.53	0.53	0.53	0.54
175	0.54	0.55	0.54	0.54	0.54	0.54	0.53	0.54	0.54	0.54	0.54	0.54	0.54	0.53	0.54	0.53	0.53	0.53	0.54
180	0.54	0.55	0.54	0.54	0.54	0.54	0.54	0.54	0.54	0.54	0.54	0.54	0.54	0.54	0.54	0.54	0.54	0.54	0.54

C Range: 0 - 360DEG
C Interval: 15.0DEG
Test Speed: HIGH
Temperature:24.1DEG
Operators:Bo Zou
Test Date:2021-05-17

γ Range: 0 - 180DEG
γ Interval: 1.0DEG
Test System:EVERFINE GO-2000A_V1 SYSTEM V2.0.291
Humidity:33.6%
Test Distance:10.149m [K=1.0000]
Remarks: standard: GB/T 9468-2008

Checker: Bo Zou

Assessor: Chunbo Zou

LUMINOUS DISTRIBUTION INTENSITY DATA

Table--2

UNIT: cd

C (DEG) γ (DEG)	285	300	315	330	345														
0	162	162	162	162	162														
5	161	161	161	161	160														
10	159	159	158	158	158														
15	156	155	155	154	154														
20	151	151	150	149	149														
25	145	145	144	143	143														
30	138	137	137	136	136														
35	130	129	128	128	128														
40	121	120	119	119	118														
45	111	110	109	108	108														
50	99.3	98.3	97.0	96.5	96.0														
55	86.8	85.7	84.6	84.1	83.7														
60	73.5	72.3	71.3	70.6	70.0														
65	59.3	58.2	57.0	56.4	55.9														
70	44.5	43.4	42.3	41.8	41.3														
75	29.8	28.8	27.8	27.2	26.8														
80	16.2	15.4	14.5	14.2	13.8														
85	4.57	5.25	4.90	4.74	4.49														
90	0.58	0.69	0.76	0.75	0.79														
95	0.00	0.00	0.07	0.06	0.18														
100	0.00	0.01	0.00	0.00	0.01														
105	0.01	0.05	0.01	0.04	0.01														
110	0.05	0.10	0.06	0.10	0.05														
115	0.09	0.15	0.08	0.15	0.08														
120	0.15	0.21	0.16	0.21	0.14														
125	0.19	0.25	0.18	0.25	0.18														
130	0.24	0.30	0.24	0.29	0.25														
135	0.29	0.35	0.28	0.35	0.28														
140	0.32	0.39	0.32	0.38	0.31														
145	0.39	0.42	0.38	0.43	0.38														
150	0.40	0.46	0.40	0.46	0.40														
155	0.45	0.48	0.45	0.49	0.43														
160	0.53	0.54	0.51	0.52	0.54														
165	0.53	0.54	0.54	0.53	0.52														
170	0.53	0.54	0.54	0.53	0.53														
175	0.53	0.53	0.54	0.53	0.53														
180	0.53	0.53	0.54	0.54	0.54														

C Range: 0 - 360DEG
 C Interval: 15.0DEG
 Test Speed: HIGH
 Temperature:24.1DEG
 Operators:Bo Zou
 Test Date:2021-05-17

Checker: Bo Zou

γ Range: 0 - 180DEG
 γ Interval: 1.0DEG
 Test System:EVERFINE GO-2000A_V1 SYSTEM V2.0.291
 Humidity:33.6%
 Test Distance:10.149m [K=1.0000]
 Remarks: standard: GB/T 9468-2008

Assessor: Chunbo Zou