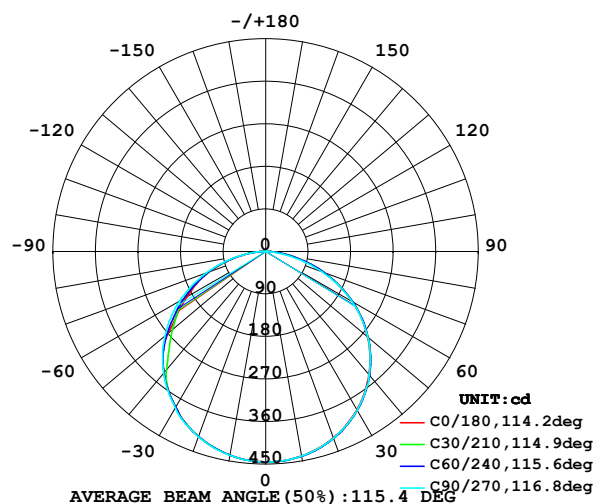


LUMINAIRE PHOTOMETRIC TEST REPORT

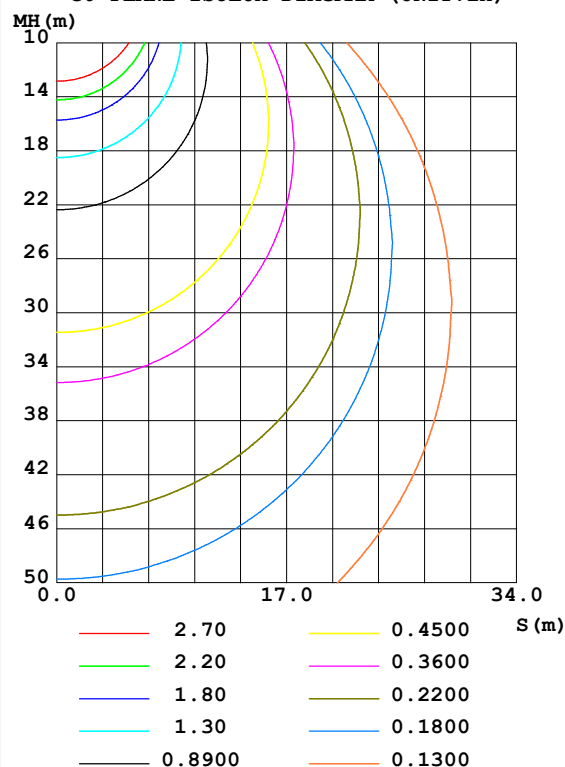
Test:U:12.00V I:1.237A P:14.84W PF:1.000 Lamp Flux:1325.04x1 lm		
NAME: EKF4215HLC9065	SUR.:1*0.1	SERIAL No.:

DATA OF LAMP		PHOTOMETRIC DATA Eff: 89.26 lm/W			
MODEL	EKF4215HLC9065	I _{max} (cd)	445.5	S/MH (C0/180)	1.27
NOMINAL POWER (W)		LOR (%)	100.0	S/MH (C90/270)	1.28
RATED VOLTAGE (V)	12	TOTAL FLUX (lm)	1325.0	η UP, DN (C0-180)	0.3, 49.8
NOMINAL FLUX (lm)	1325.04	CIE CLASS	DIRECT	η UP, DN (C180-360)	0.2, 49.7
LAMPS INSIDE	1	η up (%)	0.5	CIBSE SHR NOM	1.25
TEST VOLTAGE (V)	12	η down (%)	99.5	CIBSE SHR MAX	1.35

LUMINOUS INTENSITY DISTRIBUTION DIAGRAM



C0 PLANE ISOLUX DIAGRAM (UNIT:lx)



C Range: 0 - 360DEG
C Interval: 15.0DEG
Test Speed: HIGH
Temperature: 24.7DEG
Operators: Hu Cong
Test Date: 2021-06-08

γ Range: 0 - 180DEG
γ Interval: 1.0DEG
Test System: EVERFINE GO-2000A_V1 SYSTEM V2.0.291
Humidity: 54.2%
Test Distance: 10.149m [K=1.0000]
Remarks: standard: GB/T 9468-2008

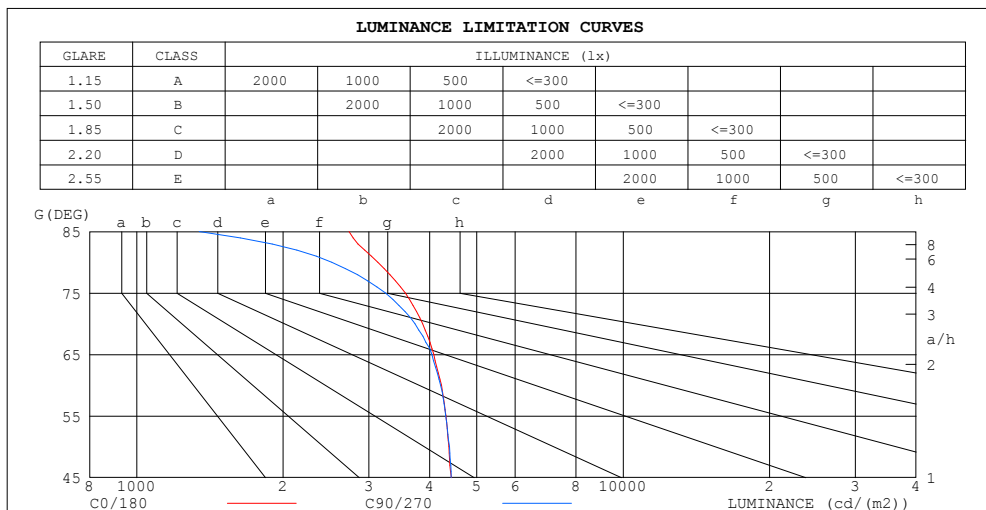
Checker: Hucong

Assessor: Chunbo Zhou

ZONAL FLUX DIAGRAM AND LUMINANCE LIMITATION CURVES

ZONAL FLUX DIAGRAM:

γ	C0	C45	C90	C135	C180	C225	C270	C315	γ	Φ zone	Φ total	%lum, lamp
10	439.1	440.1	439.5	438.4	437.6	437.2	437.8	438.1	0- 10	42.18	42.18	3.18,3.18
20	419.4	421.2	420.2	418.1	416.6	415.9	417.1	417.8	10- 20	121.4	163.6	12.3,12.3
30	386.2	388.2	387.2	383.3	380.4	381.9	382.4	384.4	20- 30	185.9	349.5	26.4,26.4
40	340.0	341.2	341.0	336.3	334.6	334.2	336.1	338.2	30- 40	226.7	576.2	43.5,43.5
50	281.5	282.7	282.4	273.6	270.3	264.1	278.7	280.2	40- 50	237.4	813.6	61.4,61.4
60	211.5	212.6	210.7	195.3	191.9	198.1	210.8	211.2	50- 60	216.3	1030	77.7,77.7
70	132.3	133.5	127.6	118.8	127.4	128.5	134.3	132.8	60- 70	166.3	1196	90.3,90.3
80	54.37	53.87	43.68	49.78	54.66	55.51	56.22	54.89	70- 80	95.30	1291	97.5,97.5
90	6.346	4.976	0.1955	5.049	7.040	6.230	0.6618	5.065	80- 90	26.87	1318	99.5,99.5
100	0.4442	0.4821	0.3331	0.3922	0.3532	0.3471	0.1931	0.2289	90-100	1.309	1320	99.6,99.6
110	0.5718	0.6428	0.5840	0.6432	0.5272	0.5464	0.4825	0.4497	100-110	0.4737	1320	99.6,99.6
120	0.8347	0.8678	0.8805	0.9386	0.8107	0.8543	0.8035	0.6609	110-120	0.6901	1321	99.7,99.7
130	1.061	1.113	1.163	1.222	1.119	1.157	1.106	0.9637	120-130	0.8834	1322	99.7,99.7
140	1.359	1.389	1.388	1.485	1.343	1.388	1.377	1.202	130-140	0.9731	1323	99.8,99.8
150	1.498	1.569	1.581	1.639	1.543	1.600	1.588	1.401	140-150	0.9185	1324	99.9,99.9
160	1.677	1.723	1.716	1.768	1.736	1.780	1.729	1.576	150-160	0.7529	1324	99.9,99.9
170	1.838	1.858	1.832	1.883	1.896	1.883	1.864	1.761	160-170	0.5011	1325	100,100
180	1.922	1.961	1.883	1.890	1.922	1.916	1.890	1.883	170-180	0.1780	1325	100,100
DEG	LUMINOUS INTENSITY:cd									UNIT:lm		



LUMINANCE cd/(m2)		
G (DEG)	C0/180	C90/270
85	2731	1343
80	3131	2516
75	3564	3246
70	3870	3730
65	4079	4043
60	4230	4214
55	4322	4319
50	4379	4393
45	4436	4428

C Range: 0 - 360DEG
 C Interval: 15.0DEG
 Test Speed: HIGH
 Temperature:24.7DEG
 Operators:Hu Cong
 Test Date:2021-06-08

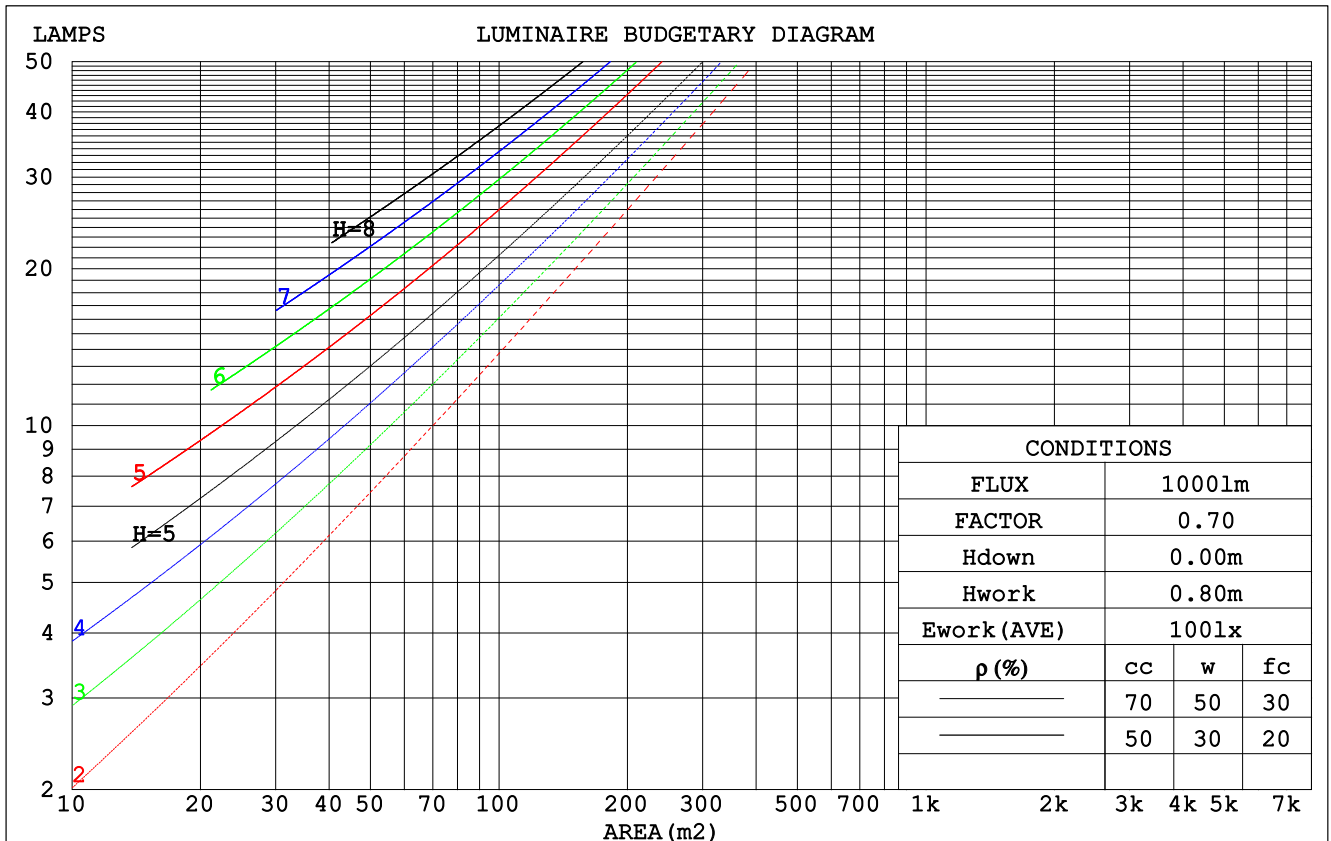
γ Range: 0 - 180DEG
 γ Interval: 1.0DEG
 Test System:EVERFINE GO-2000A_V1 SYSTEM V2.0.291
 Humidity:54.2%
 Test Distance:10.149m [K=1.0000]
 Remarks: standard: GB/T 9468-2008

Checker: Hucong

Assessor: Chunbo Zhou

CU AND LUMINAIRE BUDGETARY ESTIMATE DIAGRAM

pcc	80%			70%			50%			30%			10%			0
pw	50%	30%	10%	50%	30%	10%	50%	30%	10%	50%	30%	10%	50%	30%	10%	0
pfc	20%			20%			20%			20%			20%			0
RCR	RCR:Room Cavity Ratio						Coefficients of Utilization(CU)									
0.0	1.19	1.19	1.19	1.16	1.16	1.16	1.11	1.11	1.11	1.06	1.06	1.06	1.02	1.02	1.02	.99
1.0	1.04	.99	.95	1.01	.97	.94	.97	.94	.91	.93	.90	.88	.89	.87	.85	.83
2.0	.90	.83	.77	.88	.82	.76	.84	.79	.74	.81	.77	.73	.78	.74	.71	.69
3.0	.79	.71	.64	.77	.70	.63	.74	.68	.62	.71	.66	.61	.69	.64	.60	.58
4.0	.70	.61	.54	.68	.60	.54	.66	.59	.53	.63	.57	.52	.61	.56	.51	.49
5.0	.62	.53	.46	.61	.52	.46	.59	.51	.46	.57	.50	.45	.55	.49	.44	.42
6.0	.56	.47	.40	.55	.46	.40	.53	.45	.40	.51	.45	.39	.50	.44	.39	.37
7.0	.51	.42	.36	.50	.41	.35	.48	.41	.35	.47	.40	.35	.45	.39	.35	.32
8.0	.46	.38	.32	.45	.37	.32	.44	.37	.31	.43	.36	.31	.42	.35	.31	.29
9.0	.42	.34	.28	.42	.34	.28	.41	.33	.28	.39	.33	.28	.38	.32	.28	.26
10.0	.39	.31	.26	.38	.31	.26	.37	.30	.26	.36	.30	.25	.36	.30	.25	.23



C Range: 0 - 360DEG
 C Interval: 15.0DEG
 Test Speed: HIGH
 Temperature: 24.7DEG
 Operators: Hu Cong
 Test Date: 2021-06-08

γ Range: 0 - 180DEG
 γ Interval: 1.0DEG
 Test System: EVERFINE GO-2000A_V1 SYSTEM V2.0.291
 Humidity: 54.2%
 Test Distance: 10.149m [K=1.0000]
 Remarks: standard: GB/T 9468-2008

Checker: Hucong

Assessor: Chunbo Zhou

WEC AND CCEC

pcc	80%			70%			50%			30%			10%			0
pw	50%	30%	10%	50%	30%	10%	50%	30%	10%	50%	30%	10%	50%	30%	10%	0
pfc	20%			20%			20%			20%			20%			0
RCR	RCR:Room Cavity Ratio						Wall Exitance Coefficients (WEC)									
0.0																
1.0	.314	.178	.057	.306	.175	.056	.293	.168	.054	.280	.162	.052	.269	.156	.050	
2.0	.295	.161	.050	.288	.159	.049	.276	.154	.048	.265	.149	.047	.255	.144	.045	
3.0	.272	.145	.043	.267	.143	.043	.256	.139	.042	.246	.135	.041	.237	.131	.041	
4.0	.251	.130	.038	.246	.129	.038	.237	.126	.037	.228	.122	.037	.220	.119	.036	
5.0	.232	.118	.034	.228	.117	.034	.219	.114	.034	.211	.112	.033	.204	.109	.033	
6.0	.215	.108	.031	.211	.107	.031	.204	.104	.030	.197	.102	.030	.190	.100	.030	
7.0	.200	.099	.028	.196	.098	.028	.190	.096	.028	.183	.094	.027	.178	.092	.027	
8.0	.187	.091	.026	.184	.090	.026	.178	.089	.025	.172	.087	.025	.167	.086	.025	
9.0	.175	.085	.024	.172	.084	.024	.167	.082	.023	.162	.081	.023	.157	.080	.023	
10.0	.164	.079	.022	.162	.078	.022	.157	.077	.022	.152	.076	.022	.148	.074	.021	

pcc	80%			70%			50%			30%			10%			0
pw	50%	30%	10%	50%	30%	10%	50%	30%	10%	50%	30%	10%	50%	30%	10%	0
pfc	20%			20%			20%			20%			20%			0
RCR	RCR:Room Cavity Ratio						Ceiling Cavity Exitance Coefficients (CCEC)									
0.0	.194	.194	.194	.166	.166	.166	.113	.113	.113	.065	.065	.065	.021	.021	.021	
1.0	.184	.160	.138	.158	.137	.119	.108	.094	.082	.062	.055	.048	.020	.018	.015	
2.0	.177	.136	.102	.151	.117	.088	.104	.081	.061	.060	.047	.036	.019	.015	.012	
3.0	.169	.118	.078	.145	.102	.068	.099	.071	.047	.057	.041	.028	.018	.013	.009	
4.0	.161	.105	.062	.138	.091	.054	.095	.063	.038	.055	.037	.022	.018	.012	.007	
5.0	.154	.095	.051	.132	.082	.044	.091	.057	.031	.053	.034	.019	.017	.011	.006	
6.0	.147	.086	.043	.126	.075	.037	.087	.052	.026	.050	.031	.016	.016	.010	.005	
7.0	.140	.079	.037	.120	.069	.032	.083	.048	.023	.048	.028	.014	.016	.009	.004	
8.0	.133	.074	.033	.115	.064	.028	.079	.045	.020	.046	.026	.012	.015	.009	.004	
9.0	.127	.069	.029	.110	.060	.025	.076	.042	.018	.044	.025	.011	.014	.008	.004	
10.0	.122	.064	.026	.105	.056	.023	.073	.039	.016	.042	.023	.010	.014	.008	.003	

C Range: 0 - 360DEG
 C Interval: 15.0DEG
 Test Speed: HIGH
 Temperature:24.7DEG
 Operators:Hu Cong
 Test Date:2021-06-08

γ Range: 0 - 180DEG
 γ Interval: 1.0DEG
 Test System:EVERFINE GO-2000A_V1 SYSTEM V2.0.291
 Humidity:54.2%
 Test Distance:10.149m [K=1.0000]
 Remarks: standard: GB/T 9468-2008

Checker: Hucong

Assessor: Chunbo Zhou

UGR(Unified Glare Rating) Table

ceiling/cavity	0.7	0.7	0.5	0.5	0.3	0.7	0.7	0.5	0.5	0.3
walls	0.5	0.3	0.5	0.3	0.3	0.5	0.3	0.5	0.3	0.3
working plane	0.2	0.2	0.2	0.2	0.2	0.2	0.2	0.2	0.2	0.2
Room dimensions	Viewed crosswise					Viewed endwise				
x = 2H y = 2H	18.1	19.6	18.3	19.8	20.0	18.1	19.6	18.3	19.8	20.0
3H	19.6	21.0	19.9	21.3	21.5	19.6	21.0	19.9	21.2	21.5
4H	20.2	21.6	20.5	21.8	22.1	20.1	21.5	20.5	21.8	22.0
6H	20.6	21.9	21.0	22.2	22.5	20.5	21.7	20.8	22.0	22.3
8H	20.8	22.0	21.1	22.3	22.6	20.5	21.8	20.9	22.1	22.4
12H	20.8	22.0	21.2	22.3	22.6	20.5	21.7	20.9	22.0	22.3
4H 2H	18.7	20.0	19.0	20.3	20.6	18.7	20.0	19.0	20.3	20.6
3H	20.4	21.6	20.8	21.9	22.2	20.4	21.6	20.8	21.9	22.2
4H	21.2	22.2	21.5	22.6	22.9	21.1	22.2	21.5	22.5	22.8
6H	21.7	22.7	22.1	23.0	23.4	21.5	22.5	22.0	22.9	23.2
8H	21.9	22.8	22.3	23.1	23.5	21.7	22.6	22.1	22.9	23.3
12H	22.0	22.8	22.4	23.2	23.6	21.7	22.5	22.1	22.9	23.3
8H 4H	21.4	22.3	21.8	22.7	23.1	21.4	22.2	21.8	22.6	23.0
6H	22.1	22.8	22.5	23.2	23.7	22.0	22.7	22.4	23.1	23.5
8H	22.4	23.0	22.8	23.4	23.9	22.1	22.8	22.6	23.2	23.7
12H	22.5	23.1	23.0	23.6	24.1	22.3	22.8	22.7	23.3	23.8
12H 4H	21.4	22.2	21.9	22.6	23.0	21.4	22.2	21.8	22.6	23.0
6H	22.1	22.8	22.6	23.2	23.7	22.0	22.7	22.5	23.1	23.6
8H	22.4	23.0	22.9	23.5	23.9	22.2	22.8	22.7	23.3	23.7
Variations with the observer position at spacings:										
S = 1.0H	+ 0.1 / - 0.2					+ 0.2 / - 0.2				
1.5H	+ 0.2 / - 0.3					+ 0.2 / - 0.4				
2.0H	+ 0.2 / - 0.3					+ 0.2 / - 0.4				

CIE Pub.117 Corrected 1325 lm Total Lamp Luminous Flux.(8log(F/F0) = 1.0)

C Range: 0 - 360DEG
 C Interval: 15.0DEG
 Test Speed: HIGH
 Temperature:24.7DEG
 Operators:Hu Cong
 Test Date:2021-06-08

γ Range: 0 - 180DEG
 γ Interval: 1.0DEG
 Test System:EVERFINE GO-2000A_V1 SYSTEM V2.0.291
 Humidity:54.2%
 Test Distance:10.149m [K=1.0000]
 Remarks: standard: GB/T 9468-2008

Checker: Hucong

Assessor: Chunbo Zhou

UTILIZATION FACTORS TABLE

REFLECTANCE										
Ceiling	0.8	0.8	0.8	0.7	0.7	0.7	0.5	0.5	0.5	0
Walls	0.7	0.5	0.3	0.7	0.5	0.3	0.7	0.5	0.3	0
Working plane	0.2	0.2	0.2	0.2	0.2	0.2	0.2	0.2	0.2	0
ROOM INDEX	UTILIZATION FACTORS (PERCENT) $k(RI) \times RCR = 5$									
$k = 0.60$	57	45	38	56	45	38	55	44	38	31
0.80	67	55	48	66	55	48	64	54	47	40
1.00	75	64	57	74	63	56	72	65	56	49
1.25	82	72	65	81	71	64	78	70	63	56
1.50	88	77	70	86	77	70	83	75	69	61
2.00	94	86	79	93	85	78	89	82	77	69
2.50	98	91	84	96	89	83	92	86	82	73
3.00	102	95	89	100	93	88	95	90	86	77
4.00	106	100	95	103	98	94	99	95	91	82
5.00	108	103	99	106	101	98	101	98	95	85
ROOM INDEX	UF (total)									Direct
According to DIN EN 13032-2 2004			Suspended					SHRNOM = 1.25		

C Range: 0 - 360DEG
 C Interval: 15.0DEG
 Test Speed: HIGH
 Temperature: 24.7DEG
 Operators: Hu Cong
 Test Date: 2021-06-08

Checker: Hucong

γ Range: 0 - 180DEG
 γ Interval: 1.0DEG
 Test System: EVERFINE GO-2000A_V1 SYSTEM V2.0.291
 Humidity: 54.2%
 Test Distance: 10.149m [K=1.0000]
 Remarks: standard: GB/T 9468-2008

Assessor: Chunbo Zhou

ISOCANDELA DIAGRAM

Conical surface Flux(90deg):

695.58 lm

%lum = 52.5%

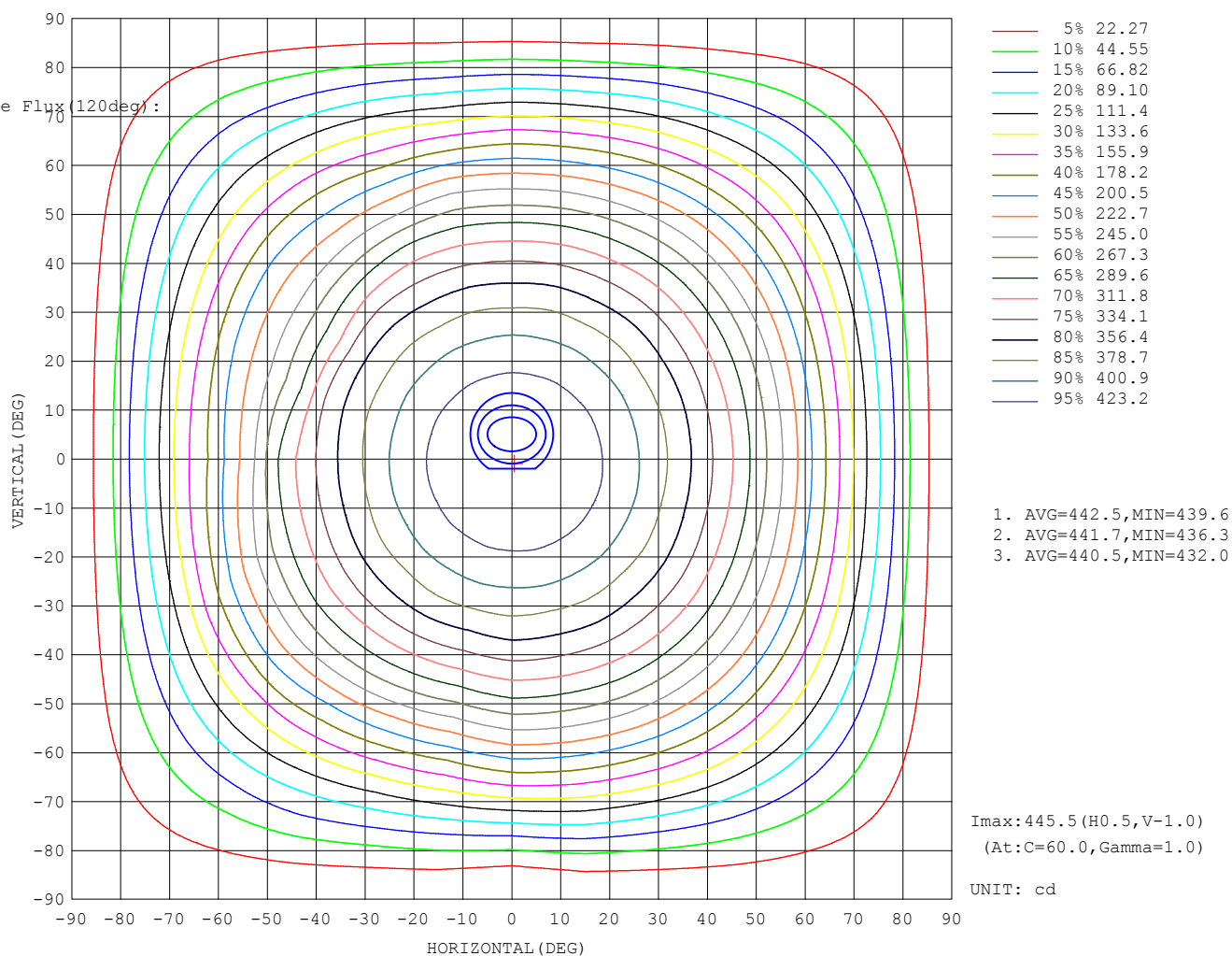
%lamp = 52.5%

Conical surface Flux(120deg):

1029.9 lm

%lum = 77.7%

%lamp = 77.7%



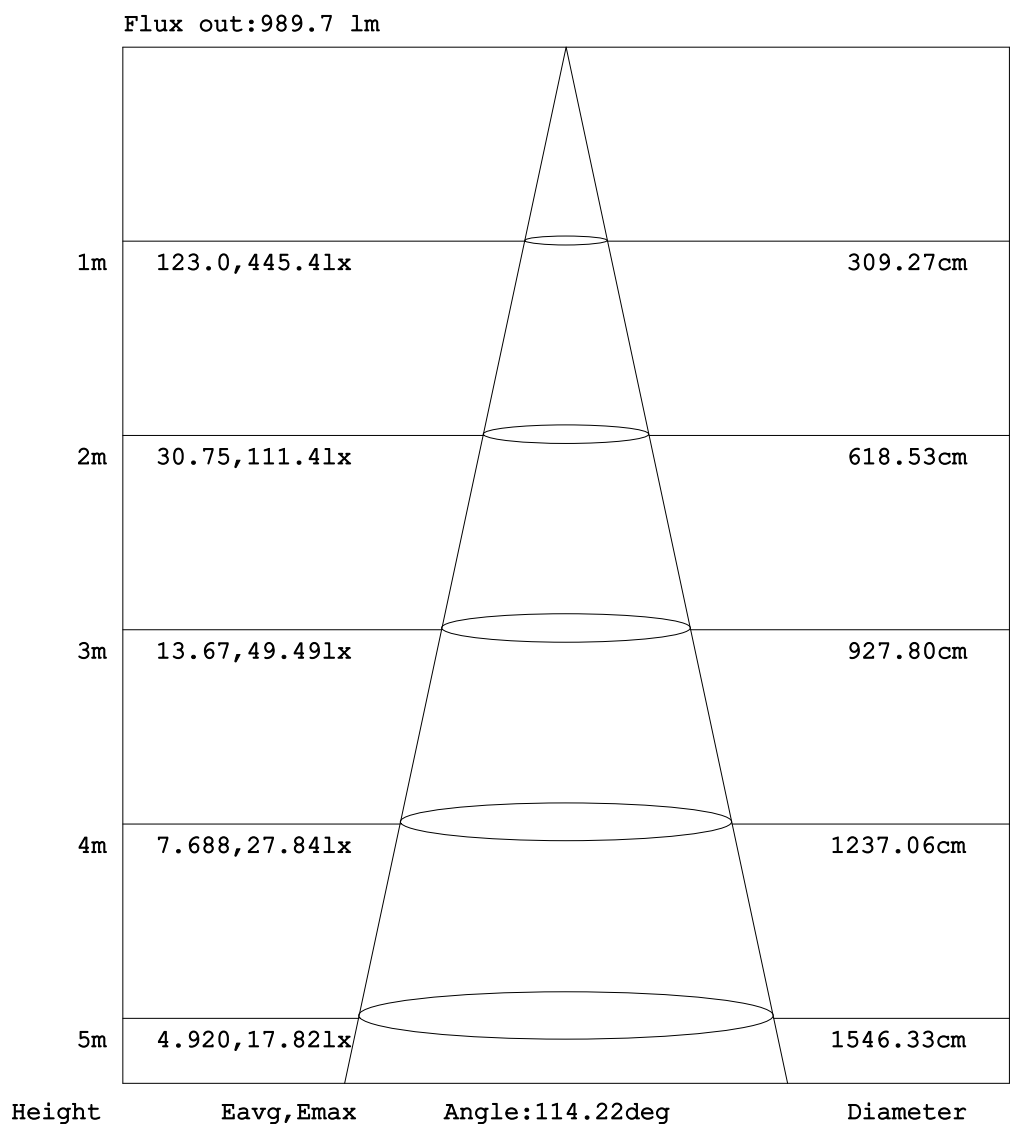
C Range: 0 - 360DEG
C Interval: 15.0DEG
Test Speed: HIGH
Temperature:24.7DEG
Operators:Hu Cong
Test Date:2021-06-08

γ Range: 0 - 180DEG
 γ Interval: 1.0DEG
Test System:EVERFINE GO-2000A_V1 SYSTEM V2.0.291
Humidity:54.2%
Test Distance:10.149m [K=1.0000]
Remarks: standard: GB/T 9468-2008

Checker: Hucong

Assessor: Chunbo Zhou

AAI Figure



Note:The Curves indicate the illuminated area and the average illumination when the luminaire is at different distance.

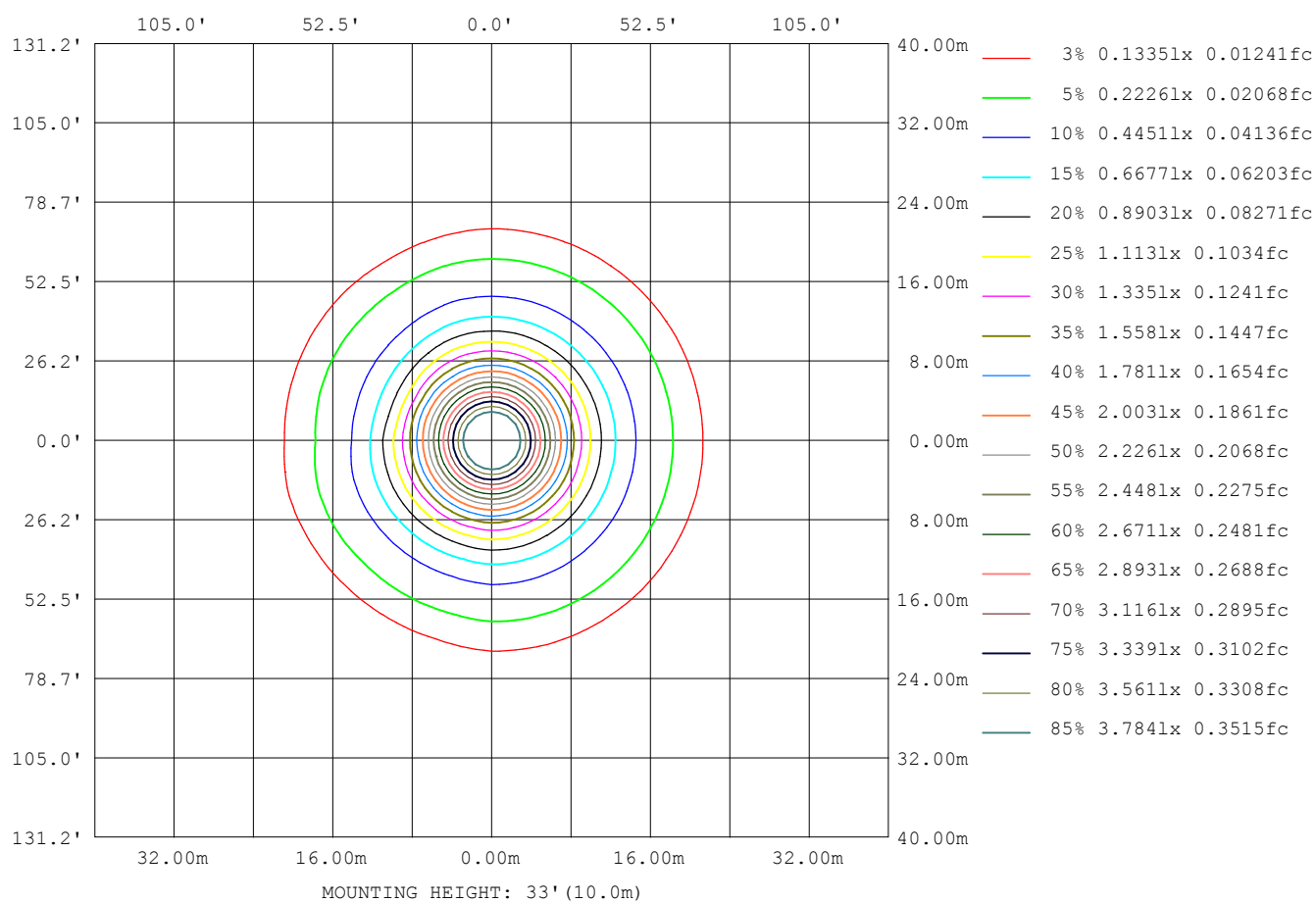
C Range: 0 - 360DEG
C Interval: 15.0DEG
Test Speed: HIGH
Temperature:24.7DEG
Operators:Hu Cong
Test Date:2021-06-08

γ Range: 0 - 180DEG
 γ Interval: 1.0DEG
Test System:EVERFINE GO-2000A_V1 SYSTEM V2.0.291
Humidity:54.2%
Test Distance:10.149m [K=1.0000]
Remarks: standard: GB/T 9468-2008

Checker: Hucong

Assessor: Chunbo Zhou

ISOLUX DIAGRAM



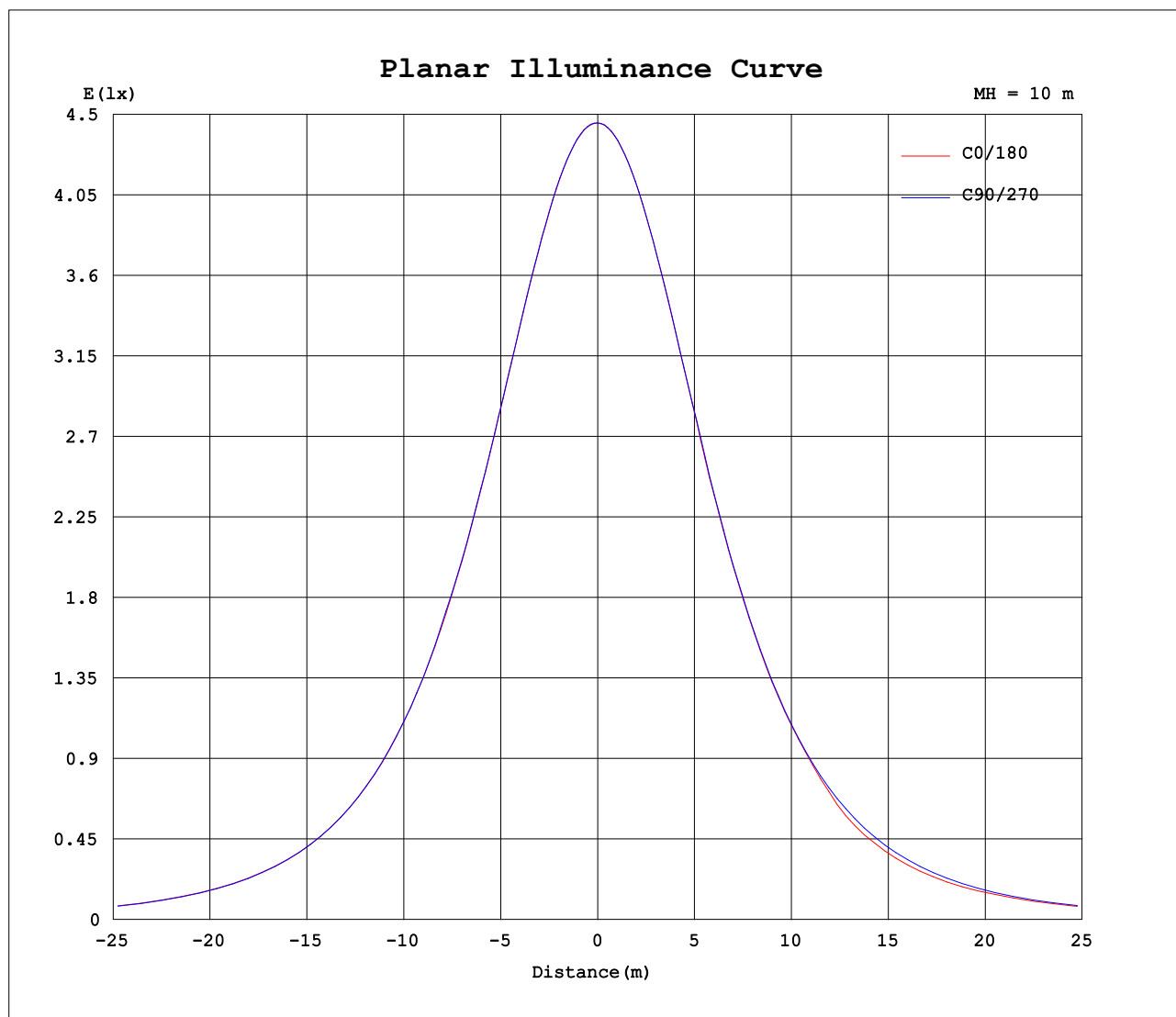
C Range: 0 - 360DEG
C Interval: 15.0DEG
Test Speed: HIGH
Temperature: 24.7DEG
Operators: Hu Cong
Test Date: 2021-06-08

Checker: Hucong

γ Range: 0 - 180DEG
 γ Interval: 1.0DEG
Test System: EVERFINE GO-2000A_V1 SYSTEM V2.0.291
Humidity: 54.2%
Test Distance: 10.149m [K=1.0000]
Remarks: standard: GB/T 9468-2008

Assessor: Chunbo Zhou

Planar Illuminance Curve



C Range: 0 - 360DEG
C Interval: 15.0DEG
Test Speed: HIGH
Temperature: 24.7DEG
Operators: Hu Cong
Test Date: 2021-06-08

γ Range: 0 - 180DEG
 γ Interval: 1.0DEG
Test System: EVERFINE GO-2000A_V1 SYSTEM V2.0.291
Humidity: 54.2%
Test Distance: 10.149m [K=1.0000]
Remarks: standard: GB/T 9468-2008

Checker: Hucong

Assessor: Chunbo Zhou

LUMINOUS DISTRIBUTION INTENSITY DATA

Table--1

UNIT: cd

C (DEG) γ (DEG)	0	15	30	45	60	75	90	105	120	135	150	165	180	195	210	225	240	255	270
0	445	445	445	445	445	445	445	445	445	445	445	445	445	445	445	445	445	445	445
5	444	444	444	444	444	444	444	444	444	443	443	443	443	443	443	443	443	443	443
10	439	440	440	440	440	440	439	439	439	438	438	438	438	437	437	437	437	437	438
15	431	432	432	432	432	432	431	431	430	430	429	429	429	428	428	428	429	429	429
20	419	420	421	421	421	421	420	420	419	418	417	417	417	416	416	416	416	416	417
25	404	406	406	407	406	406	405	405	403	403	402	402	401	400	401	400	401	401	402
30	386	387	388	388	388	388	387	385	385	383	383	381	380	382	381	382	380	383	382
35	365	364	366	366	367	365	366	361	363	361	361	359	359	360	359	360	360	361	360
40	340	340	342	341	342	341	341	335	336	336	336	335	335	333	327	334	335	337	336
45	314	313	315	314	315	314	313	306	306	307	309	308	307	289	289	299	307	309	309
50	281	281	283	283	283	282	282	272	273	274	277	276	270	257	258	264	272	279	279
55	248	248	249	249	250	249	248	236	235	239	242	243	227	227	229	231	236	246	246
60	212	212	213	213	213	212	211	198	195	195	205	207	192	198	200	198	201	209	211
65	172	173	173	174	173	173	171	159	156	158	162	169	162	163	165	166	164	168	173
70	132	133	133	133	132	132	128	121	117	119	122	126	127	127	129	128	130	129	134
75	92.2	92.9	92.3	92.5	91.4	91.2	84.0	82.1	81.8	82.4	84.3	87.4	90.1	90.3	91.6	91.2	92.0	90.5	94.5
80	54.4	54.9	54.0	53.9	52.4	51.7	43.7	46.6	46.8	49.8	49.6	51.8	54.7	55.1	56.2	55.5	55.3	54.2	56.2
85	23.8	24.1	23.1	22.5	20.8	19.6	11.7	18.1	19.1	21.0	22.1	23.6	25.0	25.2	25.9	25.1	24.5	23.0	23.6
90	6.35	6.40	5.75	4.98	3.80	2.71	0.20	3.08	4.04	5.05	5.66	6.53	7.04	7.02	7.07	6.23	5.37	4.15	0.66
95	0.54	0.56	0.59	0.44	0.32	0.19	0.21	0.44	0.33	0.67	0.91	1.15	1.21	1.17	1.06	0.76	0.31	0.19	0.11
100	0.44	0.50	0.49	0.48	0.35	0.28	0.33	0.55	0.46	0.39	0.34	0.35	0.35	0.43	0.36	0.35	0.32	0.24	0.19
105	0.49	0.61	0.58	0.57	0.46	0.42	0.46	0.69	0.55	0.51	0.47	0.44	0.41	0.42	0.46	0.47	0.47	0.37	0.33
110	0.57	0.71	0.69	0.64	0.50	0.56	0.58	0.83	0.72	0.64	0.54	0.57	0.53	0.53	0.59	0.55	0.60	0.54	0.48
115	0.68	0.80	0.75	0.74	0.64	0.70	0.74	0.97	0.86	0.80	0.68	0.72	0.67	0.65	0.74	0.69	0.76	0.69	0.62
120	0.83	0.89	0.85	0.87	0.78	0.86	0.88	1.12	1.03	0.94	0.85	0.86	0.81	0.83	0.90	0.85	0.92	0.87	0.80
125	0.94	1.02	0.96	0.98	0.94	1.00	1.03	1.26	1.16	1.07	0.96	1.01	0.97	0.96	1.05	1.01	1.08	1.03	0.99
130	1.06	1.14	1.08	1.11	1.07	1.16	1.16	1.39	1.30	1.22	1.11	1.17	1.12	1.11	1.20	1.16	1.23	1.16	1.11
135	1.25	1.27	1.21	1.26	1.22	1.34	1.27	1.52	1.46	1.37	1.26	1.33	1.24	1.26	1.33	1.28	1.37	1.27	1.23
140	1.36	1.38	1.30	1.39	1.36	1.46	1.39	1.61	1.56	1.49	1.36	1.43	1.34	1.36	1.43	1.39	1.48	1.38	1.38
145	1.41	1.47	1.39	1.47	1.44	1.54	1.50	1.67	1.60	1.57	1.45	1.49	1.44	1.46	1.54	1.50	1.58	1.46	1.54
150	1.50	1.56	1.47	1.57	1.52	1.61	1.58	1.72	1.69	1.64	1.52	1.56	1.54	1.56	1.63	1.60	1.67	1.56	1.59
155	1.58	1.63	1.57	1.64	1.59	1.68	1.68	1.77	1.73	1.71	1.57	1.63	1.63	1.63	1.72	1.68	1.75	1.64	1.67
160	1.68	1.72	1.68	1.72	1.68	1.75	1.72	1.82	1.77	1.77	1.65	1.69	1.74	1.72	1.81	1.78	1.81	1.70	1.73
165	1.76	1.79	1.72	1.79	1.74	1.81	1.79	1.85	1.81	1.84	1.70	1.75	1.84	1.80	1.88	1.83	1.86	1.77	1.80
170	1.84	1.86	1.78	1.86	1.80	1.87	1.83	1.87	1.86	1.88	1.77	1.80	1.90	1.88	1.95	1.88	1.90	1.83	1.86
175	1.89	1.96	1.87	1.92	1.87	1.89	1.87	1.89	1.88	1.89	1.79	1.81	1.92	1.94	1.99	1.90	1.91	1.88	1.90
180	1.92	1.97	1.97	1.96	1.89	1.89	1.88	1.89	1.88	1.89	1.81	1.81	1.92	2.01	1.99	1.92	1.92	1.88	1.89

C Range: 0 - 360DEG
C Interval: 15.0DEG
Test Speed: HIGH
Temperature:24.7DEG
Operators:Hu Cong
Test Date:2021-06-08

γ Range: 0 - 180DEG
γ Interval: 1.0DEG
Test System:EVERFINE GO-2000A_V1 SYSTEM V2.0.291
Humidity:54.2%
Test Distance:10.149m [K=1.0000]
Remarks: standard: GB/T 9468-2008

Checker: Hucong

Assessor: Chunbo Zhou

LUMINOUS DISTRIBUTION INTENSITY DATA

Table--2

UNIT: cd

C (DEG) γ (DEG)	285	300	315	330	345													
0	445	445	445	445	445													
5	443	443	443	444	444													
10	438	438	438	439	439													
15	429	430	430	430	430													
20	417	418	418	419	419													
25	402	403	403	404	404													
30	383	383	384	384	386													
35	362	361	363	362	364													
40	337	337	338	338	339													
45	310	310	311	311	312													
50	280	279	280	280	281													
55	247	246	247	247	247													
60	211	211	211	211	211													
65	173	173	172	173	172													
70	133	134	133	133	132													
75	93.7	93.9	92.9	93.4	92.4													
80	55.3	55.7	54.9	55.4	54.6													
85	22.9	23.5	23.4	24.1	23.8													
90	3.43	4.50	5.07	5.87	6.12													
95	0.27	0.77	0.25	0.34	0.41													
100	0.22	0.28	0.23	0.25	0.21													
105	0.28	0.37	0.33	0.34	0.28													
110	0.39	0.42	0.45	0.46	0.45													
115	0.54	0.57	0.53	0.57	0.53													
120	0.68	0.72	0.66	0.71	0.66													
125	0.86	0.89	0.84	0.88	0.83													
130	0.98	1.04	0.96	1.02	0.96													
135	1.14	1.15	1.10	1.15	1.08													
140	1.26	1.27	1.20	1.25	1.18													
145	1.36	1.38	1.30	1.36	1.28													
150	1.46	1.48	1.40	1.45	1.38													
155	1.55	1.57	1.48	1.54	1.48													
160	1.64	1.66	1.58	1.62	1.57													
165	1.71	1.74	1.70	1.72	1.66													
170	1.79	1.83	1.76	1.78	1.72													
175	1.84	1.88	1.80	1.84	1.78													
180	1.88	1.88	1.88	1.88	1.80													

C Range: 0 - 360DEG
 C Interval: 15.0DEG
 Test Speed: HIGH
 Temperature:24.7DEG
 Operators:Hu Cong
 Test Date:2021-06-08

Checker: Hucong

γ Range: 0 - 180DEG
 γ Interval: 1.0DEG
 Test System:EVERFINE GO-2000A_V1 SYSTEM V2.0.291
 Humidity:54.2%
 Test Distance:10.149m [K=1.0000]
 Remarks: standard: GB/T 9468-2008

Assessor: Chunbo Zhou