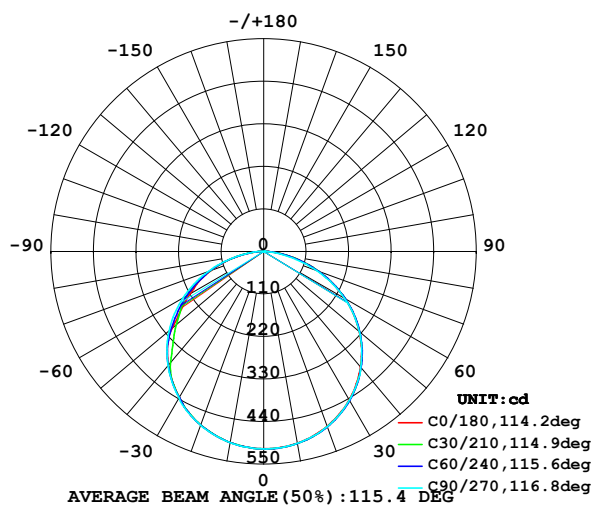


## LUMINAIRE PHOTOMETRIC TEST REPORT

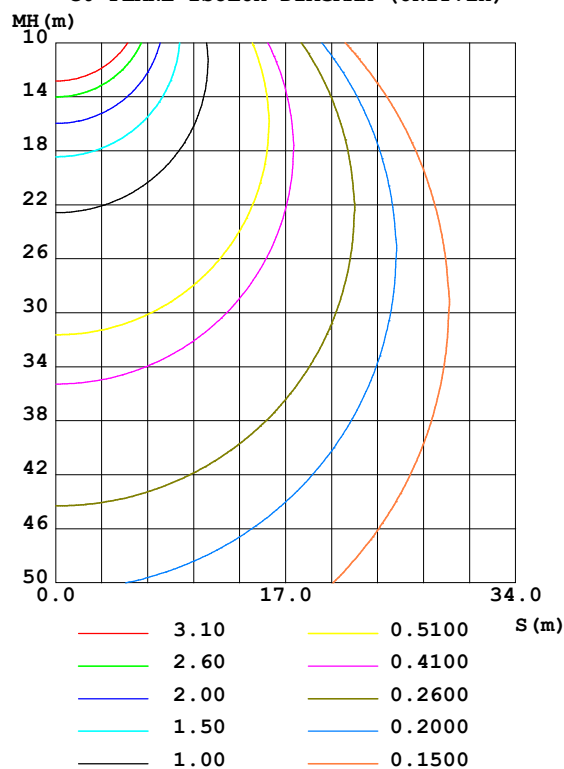
Test:U:12.00V I:1.221A P:14.65W PF:1.000 Lamp Flux:1474.49x1 lm		
NAME: EKF4415HLC90	SUR.:1*0.1	SERIAL No.:

DATA OF LAMP		PHOTOMETRIC DATA Eff: 100.65 lm/W			
MODEL	EKF4415HLC90	I <sub>max</sub> (cd)	510.6	S/MH (C0/180)	1.27
NOMINAL POWER (W)		LOR (%)	103.0	S/MH (C90/270)	1.28
RATED VOLTAGE (V)	12	TOTAL FLUX (lm)	1474.49	η UP, DN (C0-180)	0.3, 51.3
NOMINAL FLUX (lm)	1474.49	CIE CLASS	DIRECT	η UP, DN (C180-360)	0.3, 51.2
LAMPS INSIDE	1	η up (%)	0.5	CIBSE SHR NOM	1.25
TEST VOLTAGE (V)	12	η down (%)	102.5	CIBSE SHR MAX	1.35

LUMINOUS INTENSITY DISTRIBUTION DIAGRAM



C0 PLANE ISOLUX DIAGRAM (UNIT:lx)



C Range: 0 - 360DEG  
 C Interval: 15.0DEG  
 Test Speed: HIGH  
 Temperature: 24.7DEG  
 Operators: Hu Cong  
 Test Date: 2021-06-08

γ Range: 0 - 180DEG  
 γ Interval: 1.0DEG  
 Test System: EVERFINE GO-2000A\_V1 SYSTEM V2.0.291  
 Humidity: 54.2%  
 Test Distance: 10.149m [K=1.0000]  
 Remarks: standard: GB/T 9468-2008

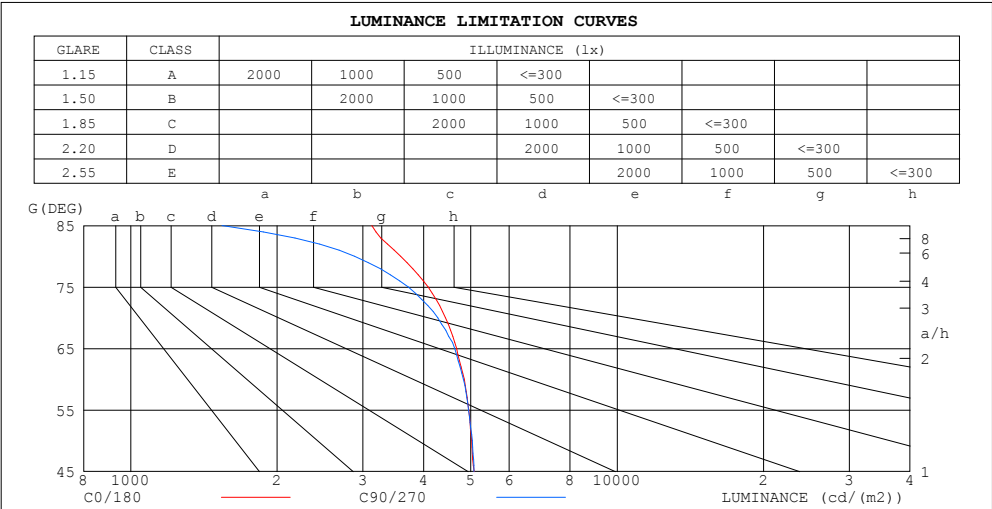
Checker: Hucong

Assessor: Chunbo Zhou

ZONAL FLUX DIAGRAM  
AND LUMINANCE LIMITATION CURVES

ZONAL FLUX DIAGRAM:

$\gamma$	C0	C45	C90	C135	C180	C225	C270	C315	$\gamma$	$\Phi$ zone	$\Phi$ total	%lum,lamp
10	503.3	504.4	503.7	502.5	501.6	501.1	501.8	502.2	0- 10	48.35	48.35	3.18,3.28
20	480.7	482.7	481.6	479.3	477.5	476.7	478.1	478.9	10- 20	139.2	187.5	12.3,12.7
30	442.7	445.0	443.8	439.4	436.0	437.7	438.3	440.6	20- 30	213.0	400.6	26.4,27.2
40	389.7	391.1	390.8	385.4	383.5	383.0	385.2	387.7	30- 40	259.8	660.4	43.5,44.8
50	322.6	324.0	323.6	313.6	309.8	302.7	319.5	321.2	40- 50	272.2	932.5	61.4,63.2
60	242.4	243.7	241.5	223.9	220.0	227.0	241.6	242.0	50- 60	247.9	1180	77.7,80.1
70	151.7	153.0	146.2	136.2	146.0	147.3	153.9	152.2	60- 70	190.6	1371	90.3,93
80	62.32	61.74	50.07	57.05	62.65	63.63	64.44	62.92	70- 80	109.2	1480	97.5,100
90	7.273	5.704	0.2241	5.787	8.069	7.140	0.7586	5.806	80- 90	30.80	1511	99.5,102
100	0.5092	0.5526	0.3818	0.4496	0.4048	0.3978	0.2213	0.2624	90-100	1.501	1513	99.6,103
110	0.6554	0.7368	0.6693	0.7372	0.6042	0.6262	0.5530	0.5154	100-110	0.5429	1513	99.6,103
120	0.9567	0.9947	1.009	1.076	0.9292	0.9791	0.9210	0.7575	110-120	0.7910	1514	99.7,103
130	1.216	1.275	1.333	1.401	1.282	1.326	1.268	1.105	120-130	1.013	1515	99.7,103
140	1.558	1.592	1.591	1.702	1.540	1.591	1.579	1.377	130-140	1.115	1516	99.8,103
150	1.717	1.798	1.812	1.879	1.768	1.834	1.820	1.606	140-150	1.053	1517	99.9,103
160	1.923	1.975	1.967	2.027	1.989	2.041	1.982	1.806	150-160	0.8629	1518	99.9,103
170	2.107	2.129	2.100	2.159	2.173	2.159	2.137	2.018	160-170	0.5744	1519	100,103
180	2.203	2.247	2.159	2.166	2.203	2.196	2.166	2.159	170-180	0.2040	1519	100,103
DEG	LUMINOUS INTENSITY:cd									UNIT:lm		



C Range: 0 - 360DEG  
C Interval: 15.0DEG  
Test Speed: HIGH  
Temperature:24.7DEG  
Operators:Hu Cong  
Test Date:2021-06-08

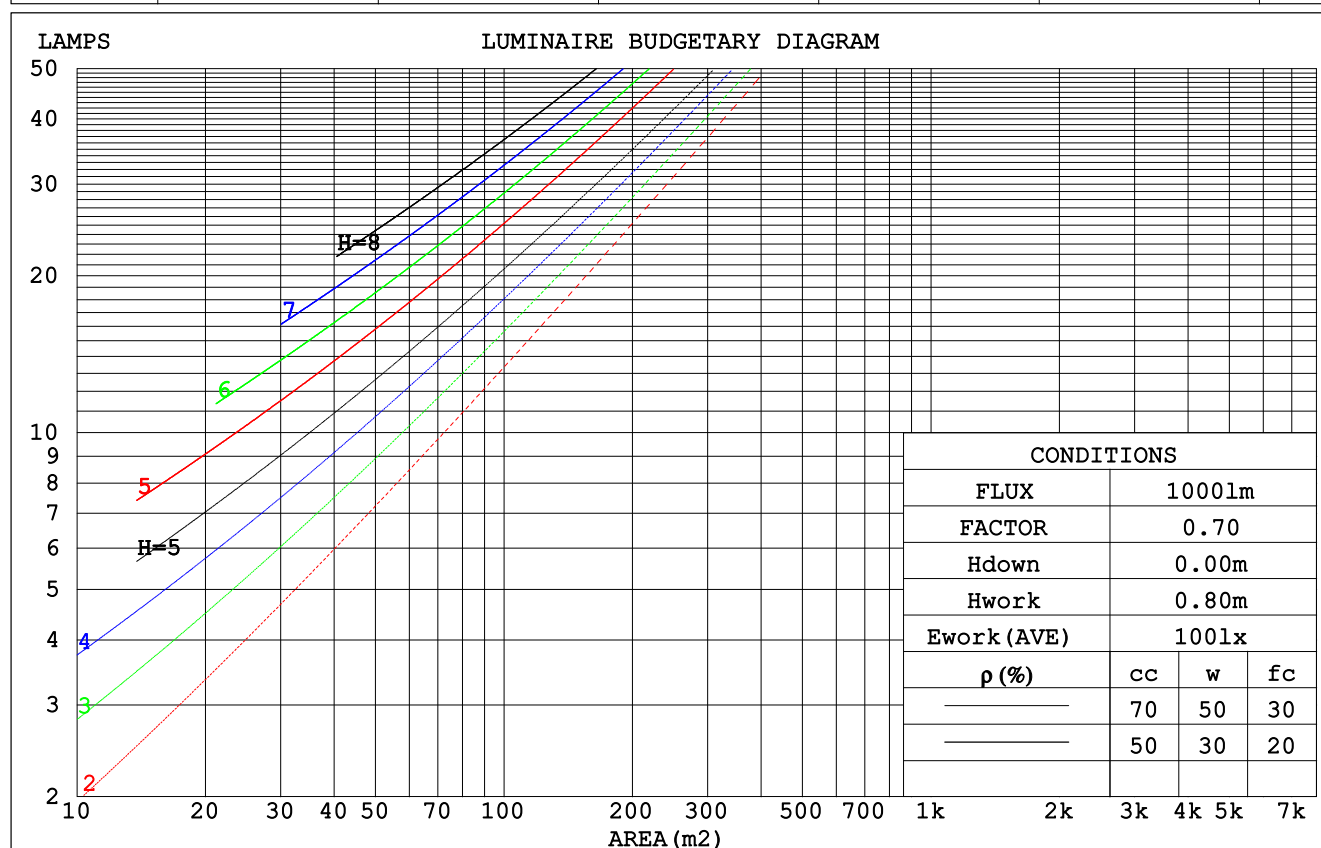
$\gamma$  Range: 0 - 180DEG  
 $\gamma$  Interval: 1.0DEG  
Test System:EVERFINE GO-2000A\_V1 SYSTEM V2.0.291  
Humidity:54.2%  
Test Distance:10.149m [K=1.0000]  
Remarks: standard: GB/T 9468-2008

Checker: Hucong

Assessor: Chunbo Zhou

## CU AND LUMINAIRE BUDGETARY ESTIMATE DIAGRAM

pcc	80%			70%			50%			30%			10%			0
pw	50%	30%	10%	50%	30%	10%	50%	30%	10%	50%	30%	10%	50%	30%	10%	0
pfc	20%			20%			20%			20%			20%			0
RCR	RCR:Room Cavity Ratio						Coefficients of Utilization(CU)									
0.0	1.22	1.22	1.22	1.20	1.20	1.20	1.14	1.14	1.14	1.09	1.09	1.09	1.05	1.05	1.05	1.02
1.0	1.07	1.02	.98	1.04	1.00	.96	.00	.96	.93	.96	.93	.90	.92	.90	.88	.85
2.0	.93	.86	.80	.91	.84	.79	.87	.81	.77	.83	.79	.75	.80	.76	.73	.71
3.0	.81	.73	.66	.80	.72	.65	.76	.70	.64	.73	.68	.63	.71	.66	.62	.59
4.0	.72	.63	.56	.70	.62	.55	.68	.60	.54	.65	.59	.54	.63	.57	.53	.50
5.0	.64	.55	.48	.63	.54	.47	.61	.53	.47	.58	.52	.46	.57	.51	.46	.44
6.0	.58	.48	.42	.57	.48	.41	.55	.47	.41	.53	.46	.41	.51	.45	.40	.38
7.0	.52	.43	.37	.51	.43	.36	.50	.42	.36	.48	.41	.36	.47	.40	.36	.33
8.0	.48	.39	.33	.47	.38	.32	.45	.38	.32	.44	.37	.32	.43	.36	.32	.30
9.0	.44	.35	.29	.43	.35	.29	.42	.34	.29	.41	.34	.29	.39	.33	.29	.27
10.0	.40	.32	.27	.40	.32	.26	.39	.31	.26	.38	.31	.26	.37	.30	.26	.24



C Range: 0 - 360DEG  
 C Interval: 15.0DEG  
 Test Speed: HIGH  
 Temperature: 24.7DEG  
 Operators: Hu Cong  
 Test Date: 2021-06-08

$\gamma$  Range: 0 - 180DEG  
 $\gamma$  Interval: 1.0DEG  
 Test System: EVERFINE GO-2000A\_V1 SYSTEM V2.0.291  
 Humidity: 54.2%  
 Test Distance: 10.149m [K=1.0000]  
 Remarks: standard: GB/T 9468-2008

Checker: Hucong

Assessor: Chunbo Zhou

## WEC AND CCEC

pcc	80%			70%			50%			30%			10%			0
pw	50%	30%	10%	50%	30%	10%	50%	30%	10%	50%	30%	10%	50%	30%	10%	0
pfc	20%			20%			20%			20%			20%			0
RCR	RCR:Room Cavity Ratio						Wall Exitance Coefficients (WEC)									
0.0																
1.0	.323	.184	.058	.316	.180	.057	.302	.173	.055	.289	.167	.053	.277	.161	.052	
2.0	.303	.166	.051	.297	.164	.050	.285	.158	.049	.273	.153	.048	.263	.149	.047	
3.0	.281	.149	.045	.275	.147	.044	.264	.143	.043	.254	.139	.043	.244	.135	.042	
4.0	.259	.134	.040	.253	.133	.039	.244	.129	.039	.235	.126	.038	.226	.123	.037	
5.0	.239	.122	.035	.234	.120	.035	.226	.118	.035	.218	.115	.034	.210	.112	.034	
6.0	.221	.111	.032	.217	.110	.032	.210	.107	.031	.202	.105	.031	.196	.103	.031	
7.0	.206	.102	.029	.202	.101	.029	.195	.099	.028	.189	.097	.028	.183	.095	.028	
8.0	.192	.094	.026	.189	.093	.026	.183	.091	.026	.177	.090	.026	.172	.088	.026	
9.0	.180	.087	.024	.177	.086	.024	.172	.085	.024	.166	.083	.024	.161	.082	.024	
10.0	.169	.081	.023	.167	.080	.022	.162	.079	.022	.157	.078	.022	.152	.077	.022	

pcc	80%			70%			50%			30%			10%			0
pw	50%	30%	10%	50%	30%	10%	50%	30%	10%	50%	30%	10%	50%	30%	10%	0
pfc	20%			20%			20%			20%			20%			0
RCR	RCR:Room Cavity Ratio						Ceiling Cavity Exitance Coefficients (CCEC)									
0.0	.200	.200	.200	.171	.171	.171	.117	.117	.117	.067	.067	.067	.021	.021	.021	
1.0	.190	.165	.142	.163	.141	.122	.111	.097	.085	.064	.056	.049	.020	.018	.016	
2.0	.182	.140	.105	.156	.120	.090	.107	.083	.063	.062	.048	.037	.020	.016	.012	
3.0	.174	.122	.080	.149	.105	.070	.102	.073	.049	.059	.043	.029	.019	.014	.009	
4.0	.166	.108	.064	.143	.093	.055	.098	.065	.039	.057	.038	.023	.018	.012	.008	
5.0	.158	.097	.052	.136	.084	.046	.094	.059	.032	.054	.035	.019	.017	.011	.006	
6.0	.151	.089	.044	.130	.077	.038	.090	.054	.027	.052	.032	.016	.017	.010	.005	
7.0	.144	.082	.038	.124	.071	.033	.086	.050	.024	.050	.029	.014	.016	.010	.005	
8.0	.137	.076	.034	.118	.066	.029	.082	.046	.021	.048	.027	.012	.015	.009	.004	
9.0	.131	.071	.030	.113	.061	.026	.078	.043	.019	.046	.025	.011	.015	.008	.004	
10.0	.125	.066	.027	.108	.058	.024	.075	.041	.017	.044	.024	.010	.014	.008	.003	

C Range: 0 - 360DEG  
 C Interval: 15.0DEG  
 Test Speed: HIGH  
 Temperature:24.7DEG  
 Operators:Hu Cong  
 Test Date:2021-06-08

γ Range: 0 - 180DEG  
 γ Interval: 1.0DEG  
 Test System:EVERFINE GO-2000A\_V1 SYSTEM V2.0.291  
 Humidity:54.2%  
 Test Distance:10.149m [K=1.0000]  
 Remarks: standard: GB/T 9468-2008

Checker: Hucong

Assessor: Chunbo Zhou

UGR(Unified Glare Rating) Table

ceiling/cavity	0.7	0.7	0.5	0.5	0.3	0.7	0.7	0.5	0.5	0.3
walls	0.5	0.3	0.5	0.3	0.3	0.5	0.3	0.5	0.3	0.3
working plane	0.2	0.2	0.2	0.2	0.2	0.2	0.2	0.2	0.2	0.2
Room dimensions	Viewed crosswise					Viewed endwise				
x = 2H y = 2H	18.5	20.1	18.8	20.3	20.5	18.5	20.1	18.8	20.3	20.5
3H	20.1	21.5	20.4	21.7	22.0	20.1	21.5	20.4	21.7	22.0
4H	20.7	22.0	21.0	22.3	22.6	20.6	22.0	20.9	22.2	22.5
6H	21.1	22.4	21.5	22.7	23.0	20.9	22.2	21.3	22.5	22.8
8H	21.2	22.5	21.6	22.8	23.1	21.0	22.2	21.4	22.5	22.8
12H	21.3	22.5	21.7	22.8	23.1	21.0	22.2	21.4	22.5	22.8
4H 2H	19.2	20.5	19.5	20.8	21.0	19.2	20.5	19.5	20.8	21.0
3H	20.9	22.1	21.3	22.4	22.7	20.9	22.1	21.2	22.4	22.7
4H	21.6	22.7	22.0	23.0	23.4	21.6	22.6	21.9	23.0	23.3
6H	22.2	23.1	22.6	23.5	23.9	22.0	23.0	22.4	23.3	23.7
8H	22.3	23.2	22.8	23.6	24.0	22.1	23.0	22.6	23.4	23.8
12H	22.5	23.3	22.9	23.7	24.1	22.2	23.0	22.6	23.4	23.8
8H 4H	21.9	22.8	22.3	23.2	23.6	21.8	22.7	22.3	23.1	23.5
6H	22.6	23.3	23.0	23.7	24.2	22.4	23.2	22.9	23.6	24.0
8H	22.8	23.5	23.3	23.9	24.4	22.6	23.3	23.1	23.7	24.2
12H	23.0	23.6	23.5	24.0	24.5	22.7	23.3	23.2	23.8	24.2
12H 4H	21.9	22.7	22.3	23.1	23.5	21.8	22.7	22.3	23.1	23.5
6H	22.6	23.3	23.1	23.7	24.2	22.5	23.1	23.0	23.6	24.0
8H	22.9	23.5	23.4	23.9	24.4	22.7	23.3	23.2	23.7	24.2
Variations with the observer position at spacings:										
S = 1.0H	+ 0.1 / - 0.2					+ 0.2 / - 0.2				
1.5H	+ 0.2 / - 0.3					+ 0.2 / - 0.4				
2.0H	+ 0.2 / - 0.3					+ 0.2 / - 0.4				

CIE Pub.117 Corrected 1474 lm Total Lamp Luminous Flux.(8log(F/F0) = 1.3)

C Range: 0 - 360DEG  
 C Interval: 15.0DEG  
 Test Speed: HIGH  
 Temperature:24.7DEG  
 Operators:Hu Cong  
 Test Date:2021-06-08

γ Range: 0 - 180DEG  
 γ Interval: 1.0DEG  
 Test System:EVERFINE GO-2000A\_V1 SYSTEM V2.0.291  
 Humidity:54.2%  
 Test Distance:10.149m [K=1.0000]  
 Remarks: standard: GB/T 9468-2008

Checker: Hucong

Assessor: Chunbo Zhou

## UTILIZATION FACTORS TABLE

REFLECTANCE										
Ceiling	0.8	0.8	0.8	0.7	0.7	0.7	0.5	0.5	0.5	0
Walls	0.7	0.5	0.3	0.7	0.5	0.3	0.7	0.5	0.3	0
Working plane	0.2	0.2	0.2	0.2	0.2	0.2	0.2	0.2	0.2	0
ROOM INDEX	UTILIZATION FACTORS (PERCENT) $k(RI) \times RCR = 5$									
$k = 0.60$	59	46	39	58	46	39	57	46	39	32
0.80	69	57	49	68	56	49	66	55	49	41
1.00	78	66	58	76	65	58	74	67	58	50
1.25	85	74	67	83	73	66	81	72	65	58
1.50	90	80	72	88	79	72	85	77	71	63
2.00	97	88	82	95	87	81	92	85	79	71
2.50	101	93	87	99	92	86	95	89	84	75
3.00	105	98	92	103	96	91	98	93	88	80
4.00	109	103	98	107	101	97	102	98	94	85
5.00	112	107	102	109	104	101	104	101	97	88
ROOM INDEX	UF (total)									Direct
According to DIN EN 13032-2 2004			Suspended					SHRNOM = 1.25		

C Range: 0 - 360DEG  
 C Interval: 15.0DEG  
 Test Speed: HIGH  
 Temperature: 24.7DEG  
 Operators: Hu Cong  
 Test Date: 2021-06-08

Checker: Hucong

$\gamma$  Range: 0 - 180DEG  
 $\gamma$  Interval: 1.0DEG  
 Test System: EVERFINE GO-2000A\_V1 SYSTEM V2.0.291  
 Humidity: 54.2%  
 Test Distance: 10.149m [K=1.0000]  
 Remarks: standard: GB/T 9468-2008

Assessor: Chunbo Zhou

## ISOCANDELA DIAGRAM

Conical surface Flux(90deg):

797.26 lm

%lum = 52.5%

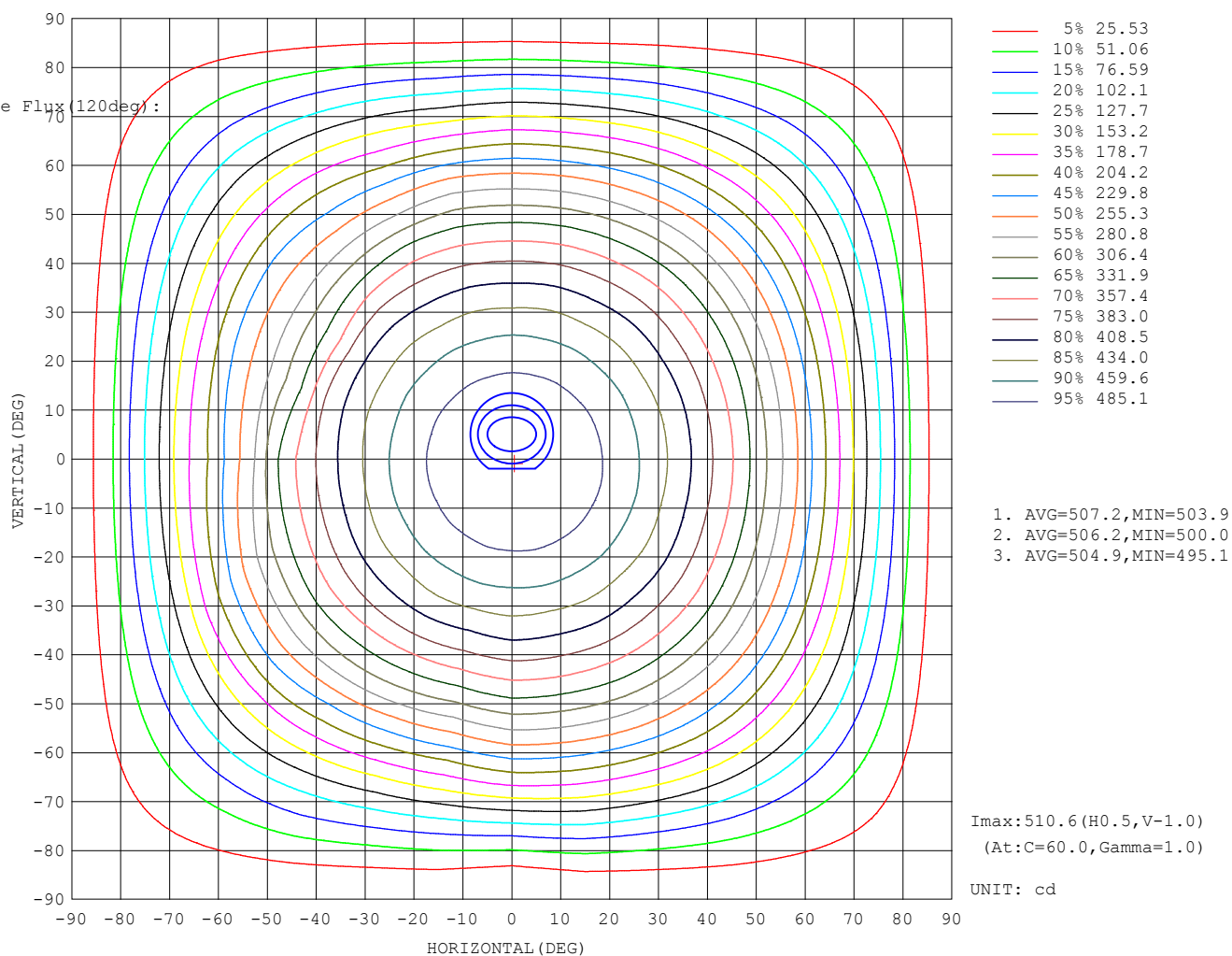
%lamp = 54.1%

Conical surface Flux(120deg):

1180.4 lm

%lum = 77.7%

%lamp = 80.1%



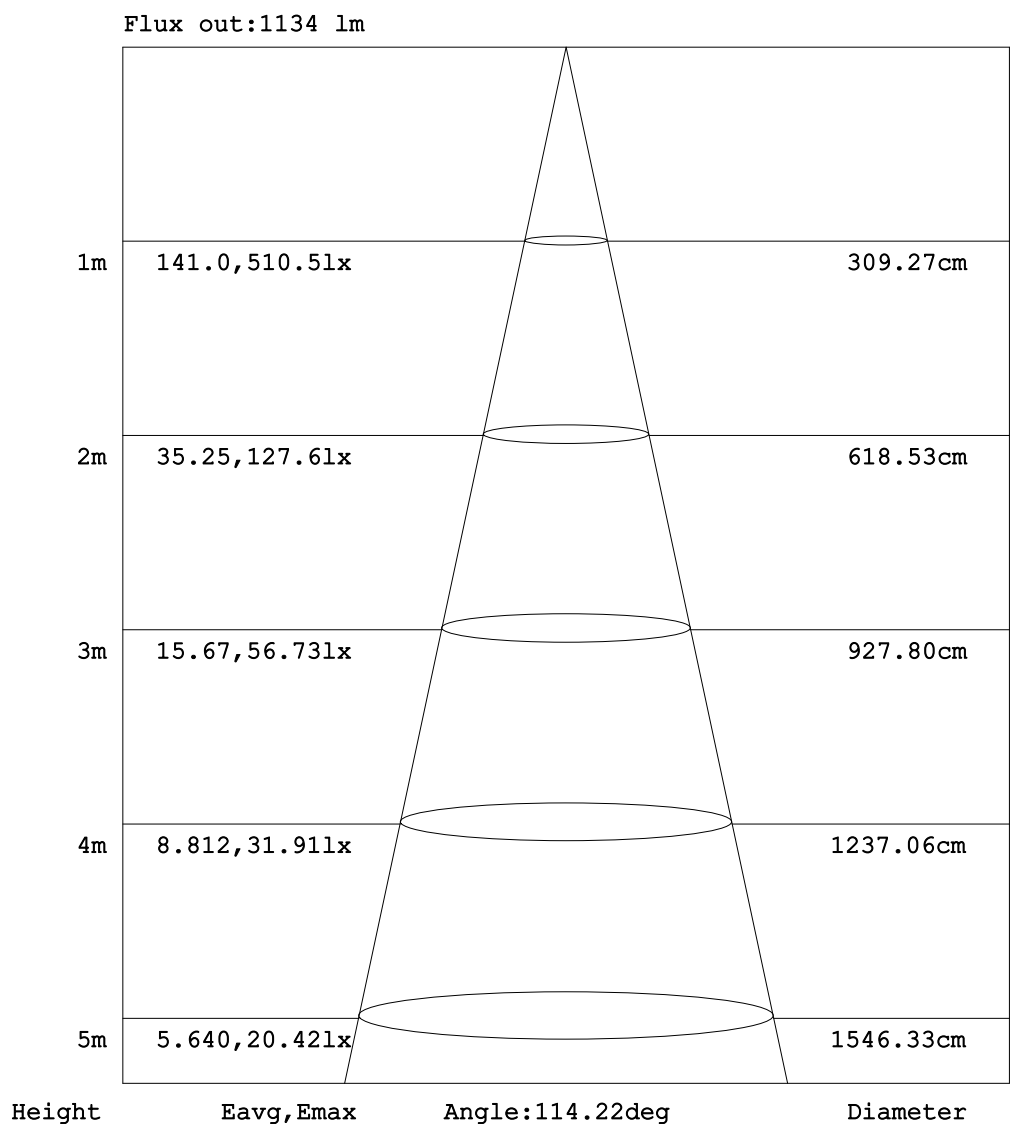
C Range: 0 - 360DEG  
C Interval: 15.0DEG  
Test Speed: HIGH  
Temperature:24.7DEG  
Operators:Hu Cong  
Test Date:2021-06-08

$\gamma$  Range: 0 - 180DEG  
 $\gamma$  Interval: 1.0DEG  
Test System:EVERFINE GO-2000A\_V1 SYSTEM V2.0.291  
Humidity:54.2%  
Test Distance:10.149m [K=1.0000]  
Remarks: standard: GB/T 9468-2008

Checker: Hucong

Assessor: Chunbo Zhou

## AAI Figure



Note:The Curves indicate the illuminated area and the average illumination when the luminaire is at different distance.

C Range: 0 - 360DEG  
C Interval: 15.0DEG  
Test Speed: HIGH  
Temperature:24.7DEG  
Operators:Hu Cong  
Test Date:2021-06-08

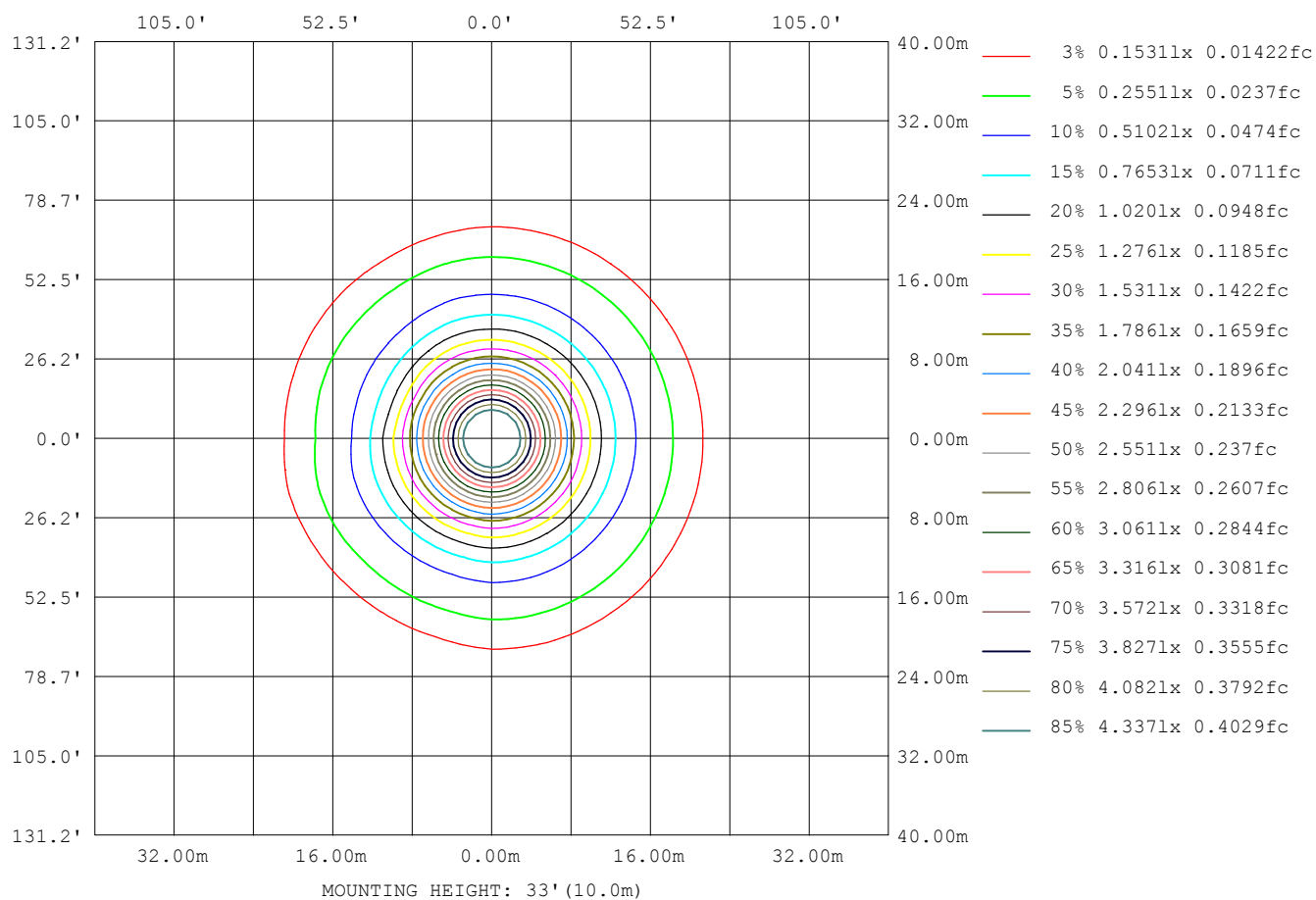
$\gamma$  Range: 0 - 180DEG  
 $\gamma$  Interval: 1.0DEG  
Test System:EVERFINE GO-2000A\_V1 SYSTEM V2.0.291  
Humidity:54.2%  
Test Distance:10.149m [K=1.0000]  
Remarks: standard: GB/T 9468-2008

Checker: Hucong

Assessor: Chunbo Zhou



## ISOLUX DIAGRAM



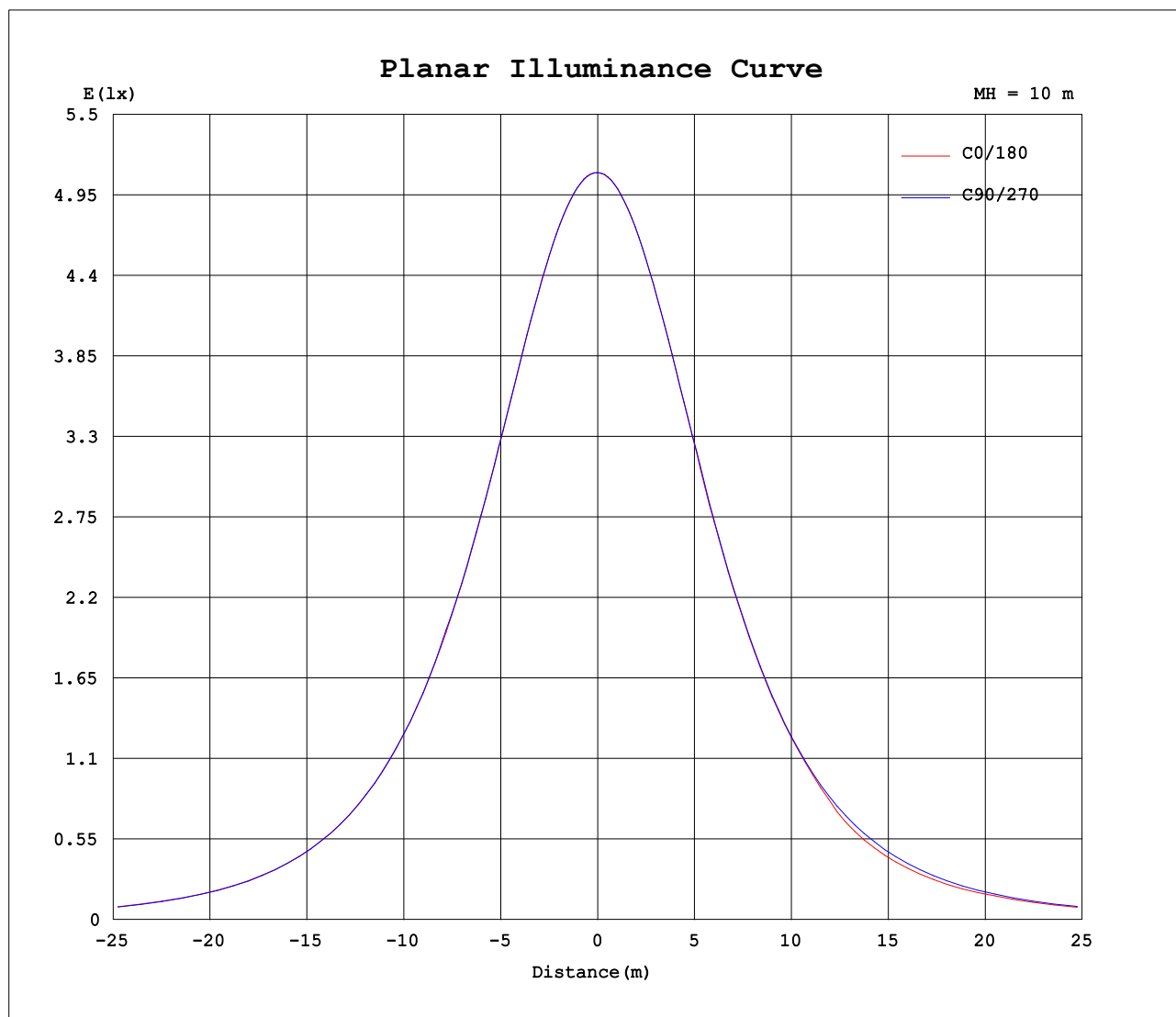
C Range: 0 - 360DEG  
 C Interval: 15.0DEG  
 Test Speed: HIGH  
 Temperature: 24.7DEG  
 Operators: Hu Cong  
 Test Date: 2021-06-08

$\gamma$  Range: 0 - 180DEG  
 $\gamma$  Interval: 1.0DEG  
 Test System: EVERFINE GO-2000A\_V1 SYSTEM V2.0.291  
 Humidity: 54.2%  
 Test Distance: 10.149m [K=1.0000]  
 Remarks: standard: GB/T 9468-2008

Checker: Hucong

Assessor: Chunbo Zhou

## Planar Illuminance Curve



C Range: 0 - 360DEG  
C Interval: 15.0DEG  
Test Speed: HIGH  
Temperature: 24.7DEG  
Operators: Hu Cong  
Test Date: 2021-06-08

$\gamma$  Range: 0 - 180DEG  
 $\gamma$  Interval: 1.0DEG  
Test System: EVERFINE GO-2000A\_V1 SYSTEM V2.0.291  
Humidity: 54.2%  
Test Distance: 10.149m [K=1.0000]  
Remarks: standard: GB/T 9468-2008

Checker: Hucong

Assessor: Chunbo Zhou

## LUMINOUS DISTRIBUTION INTENSITY DATA

Table--1

UNIT: cd

C (DEG) γ (DEG)	0	15	30	45	60	75	90	105	120	135	150	165	180	195	210	225	240	255	270
0	510	510	511	510	511	511	510	510	510	510	510	510	510	510	511	510	511	511	510
5	509	509	509	509	509	509	509	509	509	508	508	508	508	508	508	508	508	508	508
10	503	504	504	504	504	504	504	504	503	502	502	502	502	501	501	501	501	501	502
15	494	495	495	496	495	495	495	494	493	493	492	492	492	491	491	491	491	491	492
20	481	482	482	483	482	483	482	481	480	479	478	478	478	477	477	477	477	477	478
25	464	465	465	466	466	466	465	464	462	462	460	460	460	459	460	459	460	460	461
30	443	444	444	445	445	445	444	442	441	439	439	436	436	437	437	438	436	439	438
35	418	418	420	419	420	419	419	414	416	414	414	412	412	413	411	413	412	414	413
40	390	390	392	391	392	391	391	384	385	385	385	384	383	382	375	383	384	386	385
45	360	359	361	360	361	360	359	351	351	352	354	353	352	331	331	343	352	355	354
50	323	323	324	324	325	324	324	312	313	314	317	317	310	294	295	303	312	320	319
55	284	284	286	285	286	285	284	270	270	274	278	279	260	260	262	264	271	282	282
60	242	243	244	244	244	243	242	227	224	224	235	237	220	227	230	227	230	240	242
65	198	199	199	199	198	199	196	182	179	181	185	194	186	187	189	190	188	193	199
70	152	153	152	153	152	152	146	138	134	136	140	144	146	145	148	147	149	148	154
75	106	106	106	106	105	105	96.3	94.1	93.7	94.5	96.7	100	103	103	105	105	105	104	108
80	62.3	62.9	61.9	61.7	60.1	59.3	50.1	53.4	53.7	57.1	56.8	59.4	62.7	63.1	64.5	63.6	63.4	62.1	64.4
85	27.3	27.6	26.5	25.8	23.9	22.4	13.4	20.7	21.9	24.1	25.4	27.0	28.7	28.9	29.7	28.7	28.1	26.4	27.1
90	7.27	7.34	6.59	5.70	4.36	3.10	0.22	3.53	4.62	5.79	6.49	7.48	8.07	8.05	8.10	7.14	6.15	4.75	0.76
95	0.62	0.64	0.68	0.50	0.37	0.21	0.24	0.50	0.38	0.76	1.04	1.32	1.38	1.34	1.22	0.87	0.36	0.22	0.13
100	0.51	0.57	0.57	0.55	0.41	0.33	0.38	0.63	0.52	0.45	0.39	0.41	0.40	0.49	0.41	0.40	0.37	0.27	0.22
105	0.56	0.69	0.67	0.66	0.52	0.48	0.52	0.79	0.63	0.58	0.54	0.50	0.47	0.49	0.52	0.54	0.54	0.42	0.38
110	0.66	0.81	0.79	0.74	0.57	0.64	0.67	0.95	0.82	0.74	0.62	0.66	0.60	0.61	0.68	0.63	0.69	0.62	0.55
115	0.78	0.92	0.86	0.85	0.73	0.80	0.85	1.11	0.99	0.91	0.78	0.83	0.77	0.75	0.85	0.80	0.87	0.79	0.71
120	0.96	1.02	0.98	0.99	0.90	0.98	1.01	1.28	1.18	1.08	0.98	0.99	0.93	0.96	1.03	0.98	1.05	1.00	0.92
125	1.08	1.17	1.10	1.13	1.07	1.15	1.18	1.44	1.33	1.23	1.10	1.16	1.11	1.10	1.21	1.16	1.24	1.19	1.14
130	1.22	1.31	1.24	1.28	1.22	1.33	1.33	1.60	1.49	1.40	1.27	1.34	1.28	1.27	1.38	1.33	1.42	1.33	1.27
135	1.44	1.45	1.38	1.44	1.40	1.53	1.45	1.75	1.67	1.57	1.44	1.53	1.42	1.44	1.53	1.47	1.57	1.46	1.41
140	1.56	1.58	1.49	1.59	1.56	1.67	1.59	1.85	1.79	1.70	1.56	1.64	1.54	1.55	1.64	1.59	1.69	1.58	1.58
145	1.62	1.68	1.59	1.68	1.65	1.76	1.72	1.92	1.83	1.80	1.67	1.70	1.65	1.67	1.76	1.72	1.81	1.67	1.77
150	1.72	1.78	1.69	1.80	1.74	1.84	1.81	1.97	1.93	1.88	1.74	1.79	1.77	1.78	1.86	1.83	1.92	1.79	1.82
155	1.81	1.87	1.80	1.88	1.82	1.92	1.92	2.03	1.98	1.96	1.80	1.87	1.87	1.86	1.97	1.93	2.01	1.88	1.91
160	1.92	1.97	1.93	1.97	1.92	2.00	1.97	2.08	2.03	2.03	1.89	1.94	1.99	1.97	2.07	2.04	2.07	1.95	1.98
165	2.02	2.05	1.97	2.05	2.00	2.07	2.05	2.12	2.08	2.11	1.94	2.01	2.11	2.07	2.15	2.09	2.14	2.03	2.06
170	2.11	2.14	2.04	2.13	2.06	2.14	2.10	2.15	2.14	2.16	2.03	2.06	2.17	2.15	2.23	2.16	2.18	2.09	2.14
175	2.17	2.25	2.14	2.20	2.14	2.16	2.14	2.16	2.15	2.16	2.05	2.07	2.20	2.22	2.28	2.18	2.19	2.15	2.17
180	2.20	2.25	2.26	2.25	2.17	2.17	2.16	2.17	2.16	2.17	2.08	2.08	2.20	2.30	2.28	2.20	2.20	2.16	2.17

C Range: 0 - 360DEG  
C Interval: 15.0DEG  
Test Speed: HIGH  
Temperature:24.7DEG  
Operators:Hu Cong  
Test Date:2021-06-08

γ Range: 0 - 180DEG  
γ Interval: 1.0DEG  
Test System:EVERFINE GO-2000A\_V1 SYSTEM V2.0.291  
Humidity:54.2%  
Test Distance:10.149m [K=1.0000]  
Remarks: standard: GB/T 9468-2008

Checker: Hucong

Assessor: Chunbo Zhou

## LUMINOUS DISTRIBUTION INTENSITY DATA

Table--2

UNIT: cd

C (DEG) γ (DEG)	285	300	315	330	345													
0	510	510	510	510	510													
5	508	508	508	508	508													
10	502	502	502	503	503													
15	492	492	492	493	493													
20	478	479	479	480	480													
25	461	462	461	463	463													
30	440	439	441	441	442													
35	415	414	416	415	417													
40	387	386	388	387	389													
45	355	355	356	356	357													
50	321	320	321	321	322													
55	283	282	283	283	284													
60	242	242	242	242	242													
65	198	199	198	198	197													
70	153	153	152	153	152													
75	107	108	106	107	106													
80	63.4	63.8	62.9	63.5	62.6													
85	26.3	26.9	26.8	27.7	27.3													
90	3.93	5.16	5.81	6.73	7.01													
95	0.31	0.88	0.29	0.39	0.47													
100	0.26	0.33	0.26	0.29	0.24													
105	0.32	0.42	0.37	0.39	0.32													
110	0.44	0.49	0.52	0.53	0.52													
115	0.62	0.65	0.60	0.65	0.61													
120	0.78	0.83	0.76	0.81	0.76													
125	0.99	1.02	0.96	1.01	0.95													
130	1.12	1.19	1.10	1.17	1.10													
135	1.30	1.32	1.26	1.32	1.24													
140	1.44	1.45	1.38	1.44	1.35													
145	1.56	1.58	1.49	1.55	1.47													
150	1.67	1.70	1.61	1.66	1.58													
155	1.78	1.81	1.70	1.77	1.69													
160	1.88	1.90	1.81	1.86	1.80													
165	1.96	2.00	1.94	1.97	1.91													
170	2.05	2.09	2.02	2.04	1.97													
175	2.11	2.15	2.06	2.11	2.04													
180	2.16	2.16	2.16	2.15	2.06													

C Range: 0 - 360DEG  
 C Interval: 15.0DEG  
 Test Speed: HIGH  
 Temperature: 24.7DEG  
 Operators: Hu Cong  
 Test Date: 2021-06-08

Checker: Hucong

γ Range: 0 - 180DEG  
 γ Interval: 1.0DEG  
 Test System: EVERFINE GO-2000A\_V1 SYSTEM V2.0.291  
 Humidity: 54.2%  
 Test Distance: 10.149m [K=1.0000]  
 Remarks: standard: GB/T 9468-2008

Assessor: Chunbo Zhou