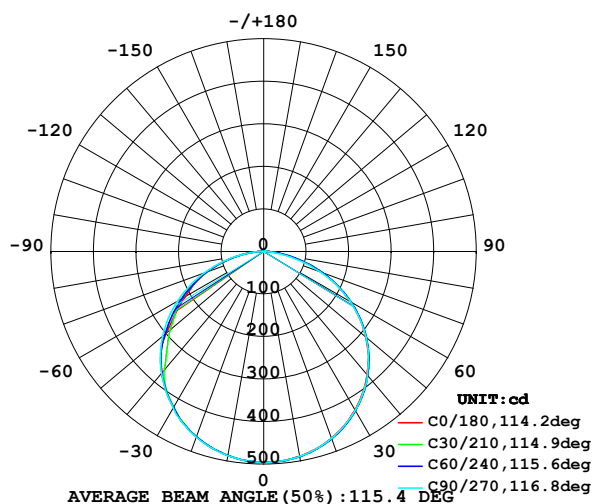


LUMINAIRE PHOTOMETRIC TEST REPORT

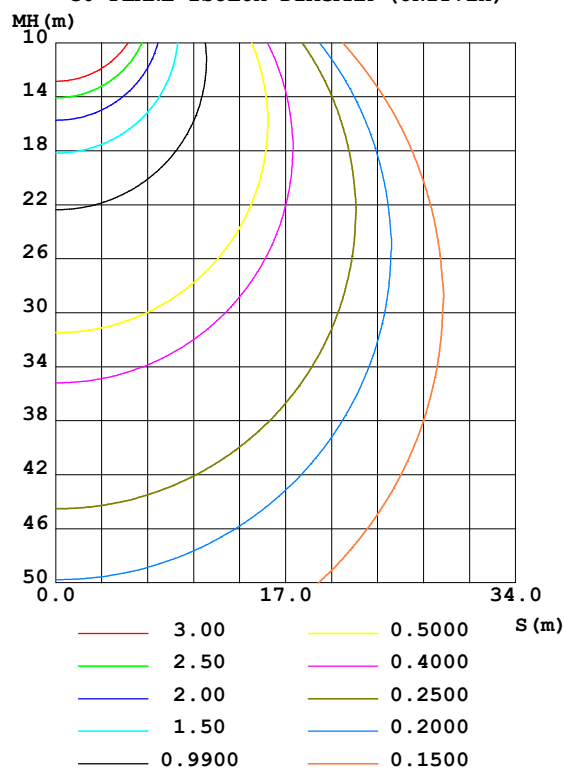
Test:U:12.00V I:1.262A P:15.14W PF:1.000 Lamp Flux:1474.49x1 lm		
NAME: EKF4215HLC90	SUR.:1*0.1	SERIAL No.:

DATA OF LAMP		PHOTOMETRIC DATA Eff: 97.36 lm/W			
MODEL	EKF4215HLC90	I _{max} (cd)	495.8	S/MH (C0/180)	1.27
NOMINAL POWER (W)		LOR (%)	100.0	S/MH (C90/270)	1.28
RATED VOLTAGE (V)	12	TOTAL FLUX (lm)	1474.5	η UP, DN (C0-180)	0.3, 49.8
NOMINAL FLUX (lm)	1474.49	CIE CLASS	DIRECT	η UP, DN (C180-360)	0.2, 49.7
LAMPS INSIDE	1	η up (%)	0.5	CIBSE SHR NOM	1.25
TEST VOLTAGE (V)	12	η down (%)	99.5	CIBSE SHR MAX	1.35

LUMINOUS INTENSITY DISTRIBUTION DIAGRAM



C0 PLANE ISOLUX DIAGRAM (UNIT:lx)



C Range: 0 - 360DEG
 C Interval: 15.0DEG
 Test Speed: HIGH
 Temperature: 24.7DEG
 Operators: Hu Cong
 Test Date: 2021-06-08

γ Range: 0 - 180DEG
 γ Interval: 1.0DEG
 Test System: EVERFINE GO-2000A_V1 SYSTEM V2.0.291
 Humidity: 54.2%
 Test Distance: 10.149m [K=1.0000]
 Remarks: standard: GB/T 9468-2008

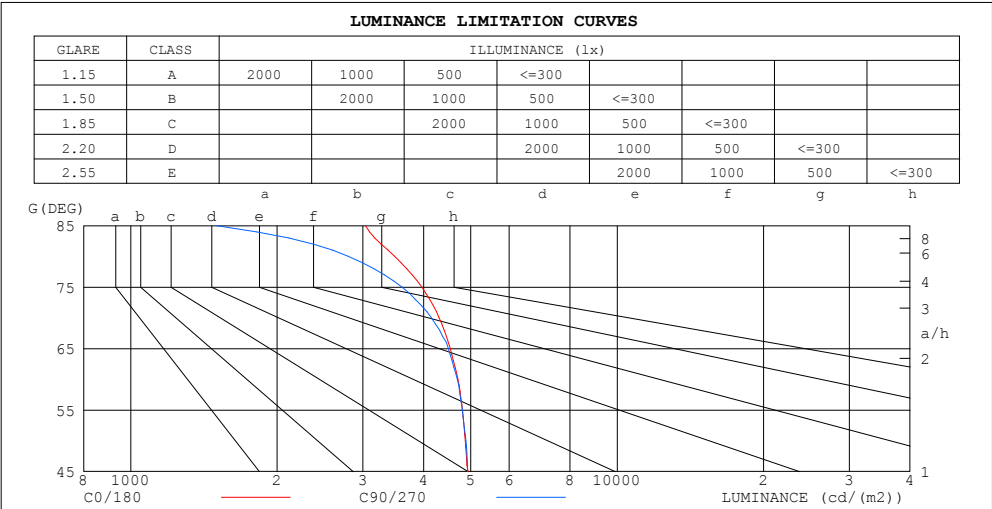
Checker: Hucong

Assessor: Chunbo Zhou

ZONAL FLUX DIAGRAM
AND LUMINANCE LIMITATION CURVES

ZONAL FLUX DIAGRAM:

γ	C0	C45	C90	C135	C180	C225	C270	C315	γ	Φ zone	Φ total	%lum, lamp
10	488.7	489.7	489.0	487.8	487.0	486.5	487.1	487.6	0- 10	46.94	46.94	3.18,3.18
20	466.7	468.7	467.5	465.3	463.6	462.8	464.1	464.9	10- 20	135.1	182.1	12.3,12.3
30	429.8	432.0	430.9	426.6	423.3	425.0	425.6	427.7	20- 30	206.8	388.9	26.4,26.4
40	378.3	379.7	379.5	374.2	372.3	371.9	374.0	376.4	30- 40	252.3	641.2	43.5,43.5
50	313.2	314.6	314.2	304.5	300.8	293.9	310.2	311.8	40- 50	264.2	905.4	61.4,61.4
60	235.4	236.6	234.5	217.4	213.6	220.4	234.6	235.0	50- 60	240.6	1146	77.7,77.7
70	147.3	148.5	142.0	132.2	141.8	143.0	149.4	147.7	60- 70	185.1	1331	90.3,90.3
80	60.51	59.95	48.61	55.39	60.83	61.78	62.56	61.09	70- 80	106.0	1437	97.5,97.5
90	7.061	5.537	0.2176	5.619	7.834	6.932	0.7365	5.636	80- 90	29.90	1467	99.5,99.5
100	0.4943	0.5365	0.3707	0.4365	0.3930	0.3863	0.2149	0.2547	90-100	1.457	1469	99.6,99.6
110	0.6363	0.7153	0.6498	0.7157	0.5866	0.6080	0.5369	0.5004	100-110	0.5271	1469	99.6,99.6
120	0.9289	0.9657	0.9798	1.044	0.9022	0.9506	0.8942	0.7355	110-120	0.7679	1470	99.7,99.7
130	1.180	1.238	1.294	1.360	1.245	1.287	1.231	1.072	120-130	0.9831	1471	99.7,99.7
140	1.512	1.545	1.544	1.653	1.495	1.545	1.533	1.337	130-140	1.083	1472	99.8,99.8
150	1.667	1.746	1.759	1.824	1.717	1.781	1.767	1.559	140-150	1.022	1473	99.9,99.9
160	1.867	1.917	1.910	1.968	1.931	1.981	1.924	1.754	150-160	0.8378	1474	99.9,99.9
170	2.045	2.067	2.039	2.096	2.110	2.096	2.074	1.959	160-170	0.5577	1474	100,100
180	2.139	2.182	2.096	2.103	2.139	2.132	2.103	2.096	170-180	0.1981	1474	100,100
DEG	LUMINOUS INTENSITY:cd									UNIT:lm		



LUMINANCE cd/(m2)		
G (DEG)	C0/180	C90/270
85	3039	1495
80	3484	2799
75	3966	3612
70	4306	4151
65	4539	4499
60	4707	4689
55	4809	4807
50	4873	4888
45	4936	4927

C Range: 0 - 360DEG
C Interval: 15.0DEG
Test Speed: HIGH
Temperature:24.7DEG
Operators:Hu Cong
Test Date:2021-06-08

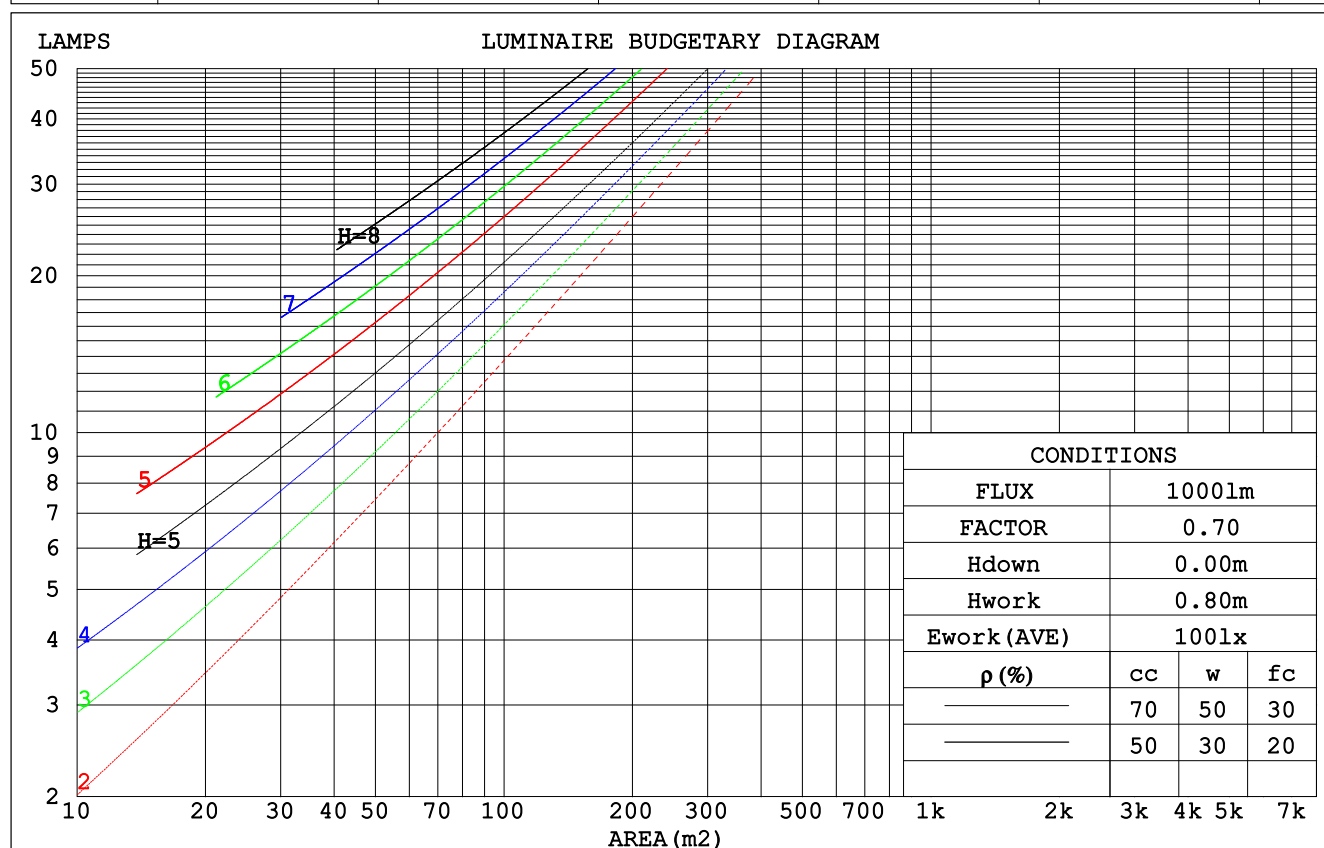
γ Range: 0 - 180DEG
 γ Interval: 1.0DEG
Test System:EVERFINE GO-2000A_V1 SYSTEM V2.0.291
Humidity:54.2%
Test Distance:10.149m [K=1.0000]
Remarks: standard: GB/T 9468-2008

Checker: Hucong

Assessor: Chunbo Zhou

CU AND LUMINAIRE BUDGETARY ESTIMATE DIAGRAM

pcc	80%			70%			50%			30%			10%			0
pw	50%	30%	10%	50%	30%	10%	50%	30%	10%	50%	30%	10%	50%	30%	10%	0
pfc	20%			20%			20%			20%			20%			0
RCR	RCR:Room Cavity Ratio						Coefficients of Utilization(CU)									
0.0	1.19	1.19	1.19	1.16	1.16	1.16	1.11	1.11	1.11	1.06	1.06	1.06	1.02	1.02	1.02	.99
1.0	1.04	.99	.95	1.01	.97	.94	.97	.94	.91	.93	.90	.88	.89	.87	.85	.83
2.0	.90	.83	.77	.88	.82	.76	.84	.79	.74	.81	.77	.73	.78	.74	.71	.69
3.0	.79	.71	.64	.77	.70	.63	.74	.68	.62	.71	.66	.61	.69	.64	.60	.58
4.0	.70	.61	.54	.68	.60	.54	.66	.59	.53	.63	.57	.52	.61	.56	.51	.49
5.0	.62	.53	.46	.61	.52	.46	.59	.51	.46	.57	.50	.45	.55	.49	.44	.42
6.0	.56	.47	.40	.55	.46	.40	.53	.45	.40	.51	.45	.39	.50	.44	.39	.37
7.0	.51	.42	.36	.50	.41	.35	.48	.41	.35	.47	.40	.35	.45	.39	.35	.32
8.0	.46	.38	.32	.45	.37	.32	.44	.37	.31	.43	.36	.31	.42	.35	.31	.29
9.0	.42	.34	.28	.42	.34	.28	.41	.33	.28	.39	.33	.28	.38	.32	.28	.26
10.0	.39	.31	.26	.38	.31	.26	.37	.30	.26	.36	.30	.25	.36	.30	.25	.23



C Range: 0 - 360DEG
 C Interval: 15.0DEG
 Test Speed: HIGH
 Temperature: 24.7DEG
 Operators: Hu Cong
 Test Date: 2021-06-08

γ Range: 0 - 180DEG
 γ Interval: 1.0DEG
 Test System: EVERFINE GO-2000A_V1 SYSTEM V2.0.291
 Humidity: 54.2%
 Test Distance: 10.149m [K=1.0000]
 Remarks: standard: GB/T 9468-2008

Checker: Hucong

Assessor: Chunbo Zhou

WEC AND CCEC

pcc	80%			70%			50%			30%			10%			0
pw	50%	30%	10%	50%	30%	10%	50%	30%	10%	50%	30%	10%	50%	30%	10%	0
pfc	20%			20%			20%			20%			20%			0
RCR	RCR:Room Cavity Ratio						Wall Exitance Coefficients (WEC)									
0.0																
1.0	.314	.178	.057	.306	.175	.056	.293	.168	.054	.280	.162	.052	.269	.156	.050	
2.0	.295	.161	.050	.288	.159	.049	.276	.154	.048	.265	.149	.047	.255	.144	.045	
3.0	.272	.145	.043	.267	.143	.043	.256	.139	.042	.246	.135	.041	.237	.131	.041	
4.0	.251	.130	.038	.246	.129	.038	.237	.126	.037	.228	.122	.037	.220	.119	.036	
5.0	.232	.118	.034	.228	.117	.034	.219	.114	.034	.211	.112	.033	.204	.109	.033	
6.0	.215	.108	.031	.211	.107	.031	.204	.104	.030	.197	.102	.030	.190	.100	.030	
7.0	.200	.099	.028	.196	.098	.028	.190	.096	.028	.183	.094	.027	.178	.092	.027	
8.0	.187	.091	.026	.184	.090	.026	.178	.089	.025	.172	.087	.025	.167	.086	.025	
9.0	.175	.085	.024	.172	.084	.024	.167	.082	.023	.162	.081	.023	.157	.080	.023	
10.0	.164	.079	.022	.162	.078	.022	.157	.077	.022	.152	.076	.022	.148	.074	.021	

pcc	80%			70%			50%			30%			10%			0
pw	50%	30%	10%	50%	30%	10%	50%	30%	10%	50%	30%	10%	50%	30%	10%	0
pfc	20%			20%			20%			20%			20%			0
RCR	RCR:Room Cavity Ratio						Ceiling Cavity Exitance Coefficients (CCEC)									
0.0	.194	.194	.194	.166	.166	.166	.113	.113	.113	.065	.065	.065	.021	.021	.021	
1.0	.184	.160	.138	.158	.137	.119	.108	.094	.082	.062	.055	.048	.020	.018	.015	
2.0	.177	.136	.102	.151	.117	.088	.104	.081	.061	.060	.047	.036	.019	.015	.012	
3.0	.169	.118	.078	.145	.102	.068	.099	.071	.047	.057	.041	.028	.018	.013	.009	
4.0	.161	.105	.062	.138	.091	.054	.095	.063	.038	.055	.037	.022	.018	.012	.007	
5.0	.154	.095	.051	.132	.082	.044	.091	.057	.031	.053	.034	.019	.017	.011	.006	
6.0	.147	.086	.043	.126	.075	.037	.087	.052	.026	.050	.031	.016	.016	.010	.005	
7.0	.140	.079	.037	.120	.069	.032	.083	.048	.023	.048	.028	.014	.016	.009	.004	
8.0	.133	.074	.033	.115	.064	.028	.079	.045	.020	.046	.026	.012	.015	.009	.004	
9.0	.127	.069	.029	.110	.060	.025	.076	.042	.018	.044	.025	.011	.014	.008	.004	
10.0	.122	.064	.026	.105	.056	.023	.073	.039	.016	.042	.023	.010	.014	.008	.003	

C Range: 0 - 360DEG
 C Interval: 15.0DEG
 Test Speed: HIGH
 Temperature:24.7DEG
 Operators:Hu Cong
 Test Date:2021-06-08

γ Range: 0 - 180DEG
 γ Interval: 1.0DEG
 Test System:EVERFINE GO-2000A_V1 SYSTEM V2.0.291
 Humidity:54.2%
 Test Distance:10.149m [K=1.0000]
 Remarks: standard: GB/T 9468-2008

Checker: Hucong

Assessor: Chunbo Zhou

UGR(Unified Glare Rating) Table

ceiling/cavity	0.7	0.7	0.5	0.5	0.3	0.7	0.7	0.5	0.5	0.3
walls	0.5	0.3	0.5	0.3	0.3	0.5	0.3	0.5	0.3	0.3
working plane	0.2	0.2	0.2	0.2	0.2	0.2	0.2	0.2	0.2	0.2
Room dimensions	Viewed crosswise					Viewed endwise				
x = 2H y = 2H	18.4	20.0	18.7	20.2	20.4	18.4	20.0	18.7	20.2	20.4
3H	20.0	21.4	20.3	21.6	21.9	20.0	21.4	20.3	21.6	21.9
4H	20.6	21.9	20.9	22.2	22.5	20.5	21.9	20.8	22.1	22.4
6H	21.0	22.3	21.4	22.6	22.9	20.8	22.1	21.2	22.4	22.7
8H	21.1	22.4	21.5	22.7	23.0	20.9	22.1	21.3	22.4	22.7
12H	21.2	22.4	21.6	22.7	23.0	20.9	22.1	21.3	22.4	22.7
4H 2H	19.1	20.4	19.4	20.7	20.9	19.1	20.4	19.4	20.7	20.9
3H	20.8	22.0	21.2	22.3	22.6	20.8	22.0	21.1	22.3	22.6
4H	21.5	22.6	21.9	22.9	23.3	21.5	22.5	21.8	22.9	23.2
6H	22.1	23.0	22.5	23.4	23.8	21.9	22.9	22.3	23.2	23.6
8H	22.2	23.1	22.7	23.5	23.9	22.0	22.9	22.5	23.3	23.7
12H	22.4	23.2	22.8	23.6	24.0	22.1	22.9	22.5	23.3	23.7
8H 4H	21.8	22.7	22.2	23.1	23.4	21.7	22.6	22.1	23.0	23.4
6H	22.5	23.2	22.9	23.6	24.1	22.3	23.1	22.8	23.5	23.9
8H	22.7	23.4	23.2	23.8	24.3	22.5	23.2	23.0	23.6	24.1
12H	22.9	23.5	23.4	23.9	24.4	22.6	23.2	23.1	23.6	24.1
12H 4H	21.8	22.6	22.2	23.0	23.4	21.7	22.6	22.2	22.9	23.4
6H	22.5	23.2	23.0	23.6	24.1	22.4	23.0	22.8	23.5	23.9
8H	22.8	23.4	23.3	23.8	24.3	22.6	23.2	23.1	23.6	24.1
Variations with the observer position at spacings:										
S = 1.0H	+ 0.1 / - 0.2					+ 0.2 / - 0.2				
1.5H	+ 0.2 / - 0.3					+ 0.2 / - 0.4				
2.0H	+ 0.2 / - 0.3					+ 0.2 / - 0.4				

CIE Pub.117 Corrected 1474 lm Total Lamp Luminous Flux.(8log(F/F0) = 1.3)

C Range: 0 - 360DEG
 C Interval: 15.0DEG
 Test Speed: HIGH
 Temperature:24.7DEG
 Operators:Hu Cong
 Test Date:2021-06-08

Checker: Hucong

γ Range: 0 - 180DEG
 γ Interval: 1.0DEG
 Test System:EVERFINE GO-2000A_V1 SYSTEM V2.0.291
 Humidity:54.2%
 Test Distance:10.149m [K=1.0000]
 Remarks: standard: GB/T 9468-2008

Assessor: Chunbo Zhou

UTILIZATION FACTORS TABLE

REFLECTANCE										
Ceiling	0.8	0.8	0.8	0.7	0.7	0.7	0.5	0.5	0.5	0
Walls	0.7	0.5	0.3	0.7	0.5	0.3	0.7	0.5	0.3	0
Working plane	0.2	0.2	0.2	0.2	0.2	0.2	0.2	0.2	0.2	0
ROOM INDEX	UTILIZATION FACTORS (PERCENT) $k(RI) \times RCR = 5$									
$k = 0.60$	57	45	38	56	45	38	55	44	38	31
0.80	67	55	48	66	55	48	64	54	47	40
1.00	75	64	57	74	63	56	72	65	56	49
1.25	82	72	65	81	71	64	78	70	63	56
1.50	88	77	70	86	77	70	83	75	69	61
2.00	94	86	79	93	85	78	89	82	77	69
2.50	98	91	84	96	89	83	92	86	82	73
3.00	102	95	89	100	93	88	95	90	86	77
4.00	106	100	95	103	98	94	99	95	91	82
5.00	108	103	99	106	101	98	101	98	95	85
ROOM INDEX	UF (total)									Direct
According to DIN EN 13032-2 2004			Suspended					SHRNOM = 1.25		

C Range: 0 - 360DEG
 C Interval: 15.0DEG
 Test Speed: HIGH
 Temperature: 24.7DEG
 Operators: Hu Cong
 Test Date: 2021-06-08

Checker: Hucong

γ Range: 0 - 180DEG
 γ Interval: 1.0DEG
 Test System: EVERFINE GO-2000A_V1 SYSTEM V2.0.291
 Humidity: 54.2%
 Test Distance: 10.149m [K=1.0000]
 Remarks: standard: GB/T 9468-2008

Assessor: Chunbo Zhou

ISOCANDELA DIAGRAM

Conical surface Flux(90deg):

774.04 lm

%lum = 52.5%

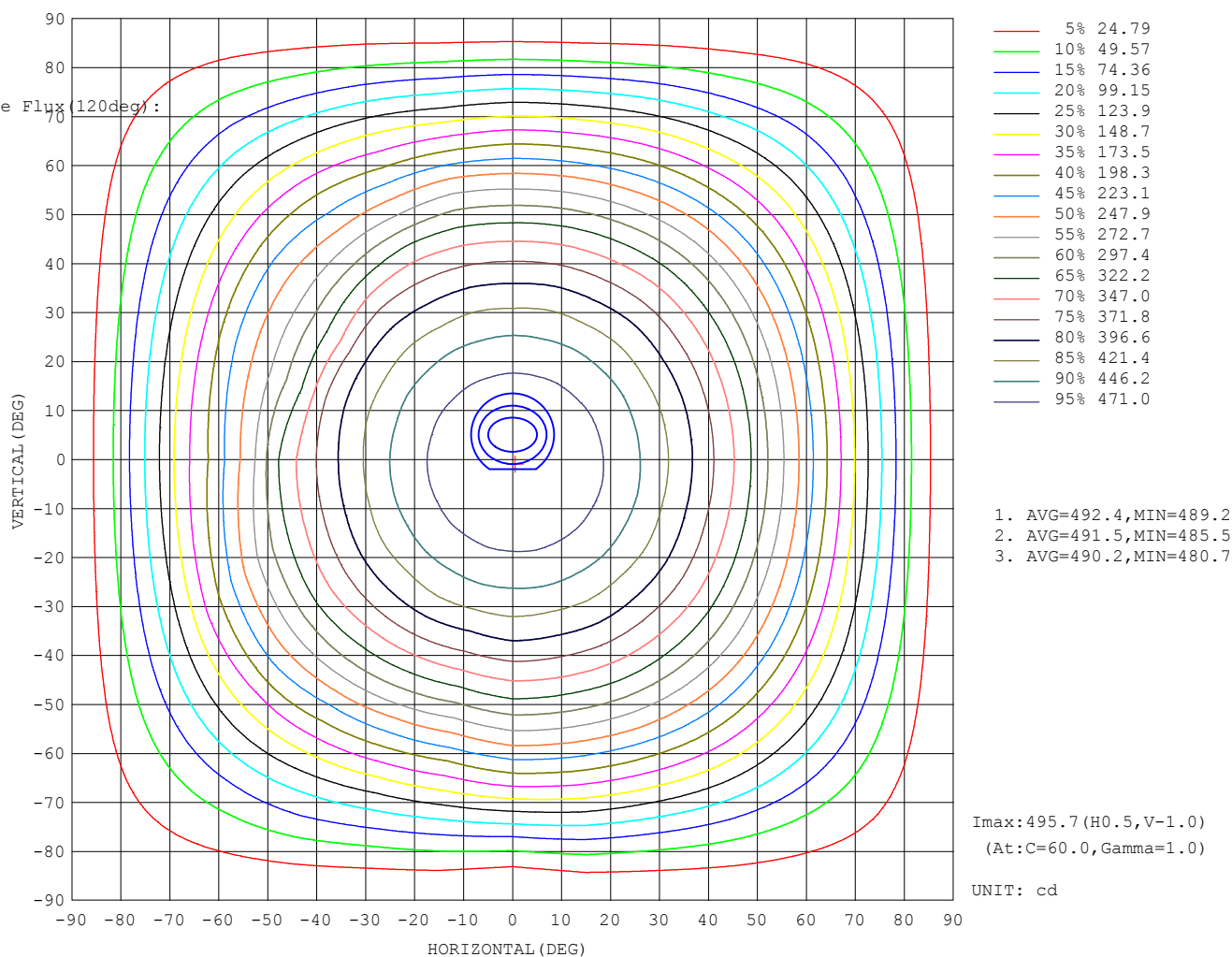
%lamp = 52.5%

Conical surface Flux(120deg):

1146 lm

%lum = 77.7%

%lamp = 77.7%



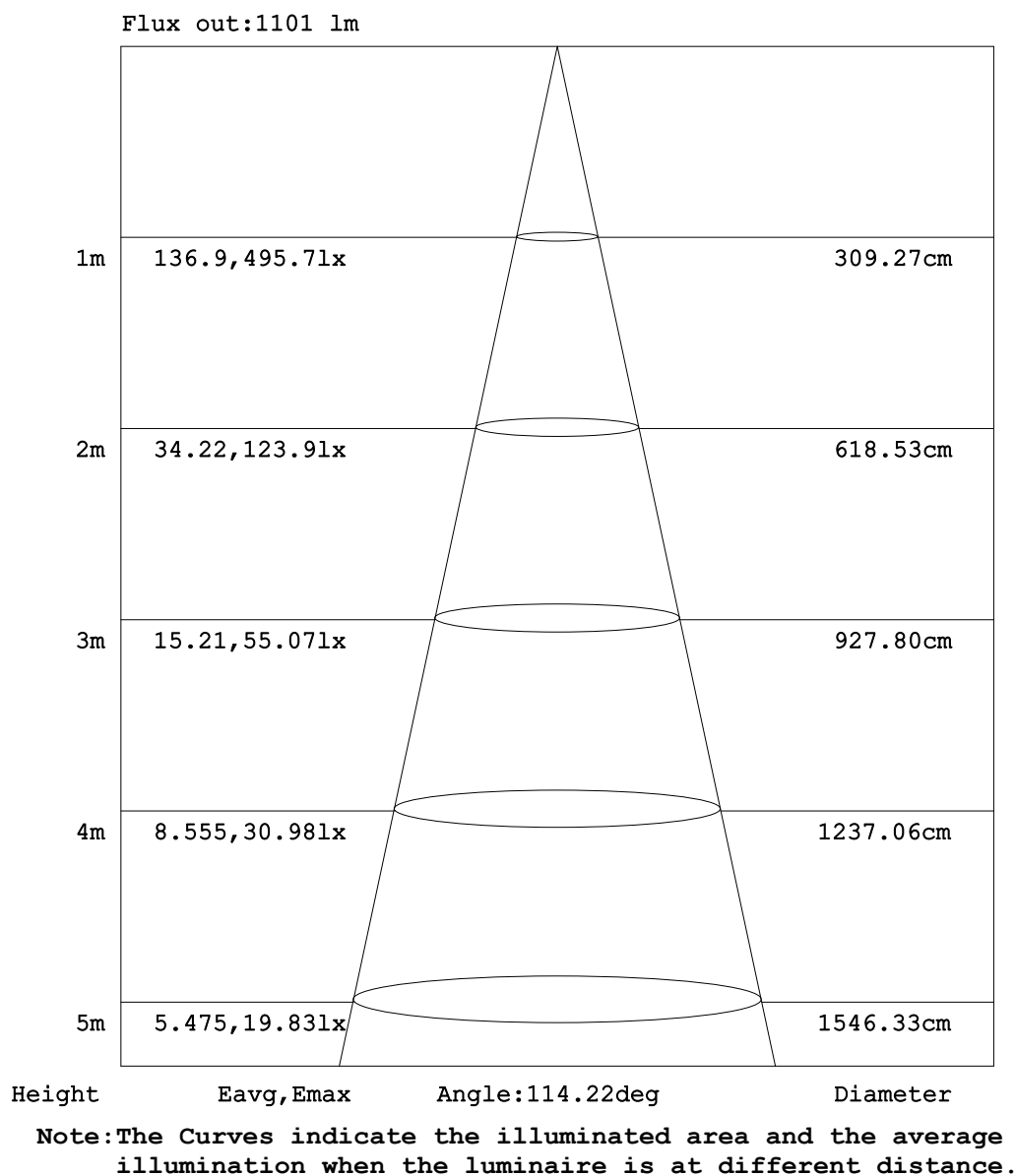
C Range: 0 - 360DEG
C Interval: 15.0DEG
Test Speed: HIGH
Temperature: 24.7DEG
Operators: Hu Cong
Test Date: 2021-06-08

γ Range: 0 - 180DEG
 γ Interval: 1.0DEG
Test System: EVERFINE GO-2000A_V1 SYSTEM V2.0.291
Humidity: 54.2%
Test Distance: 10.149m [K=1.0000]
Remarks: standard: GB/T 9468-2008

Checker: Hucong

Assessor: Chunbo Zhou

AAI Figure



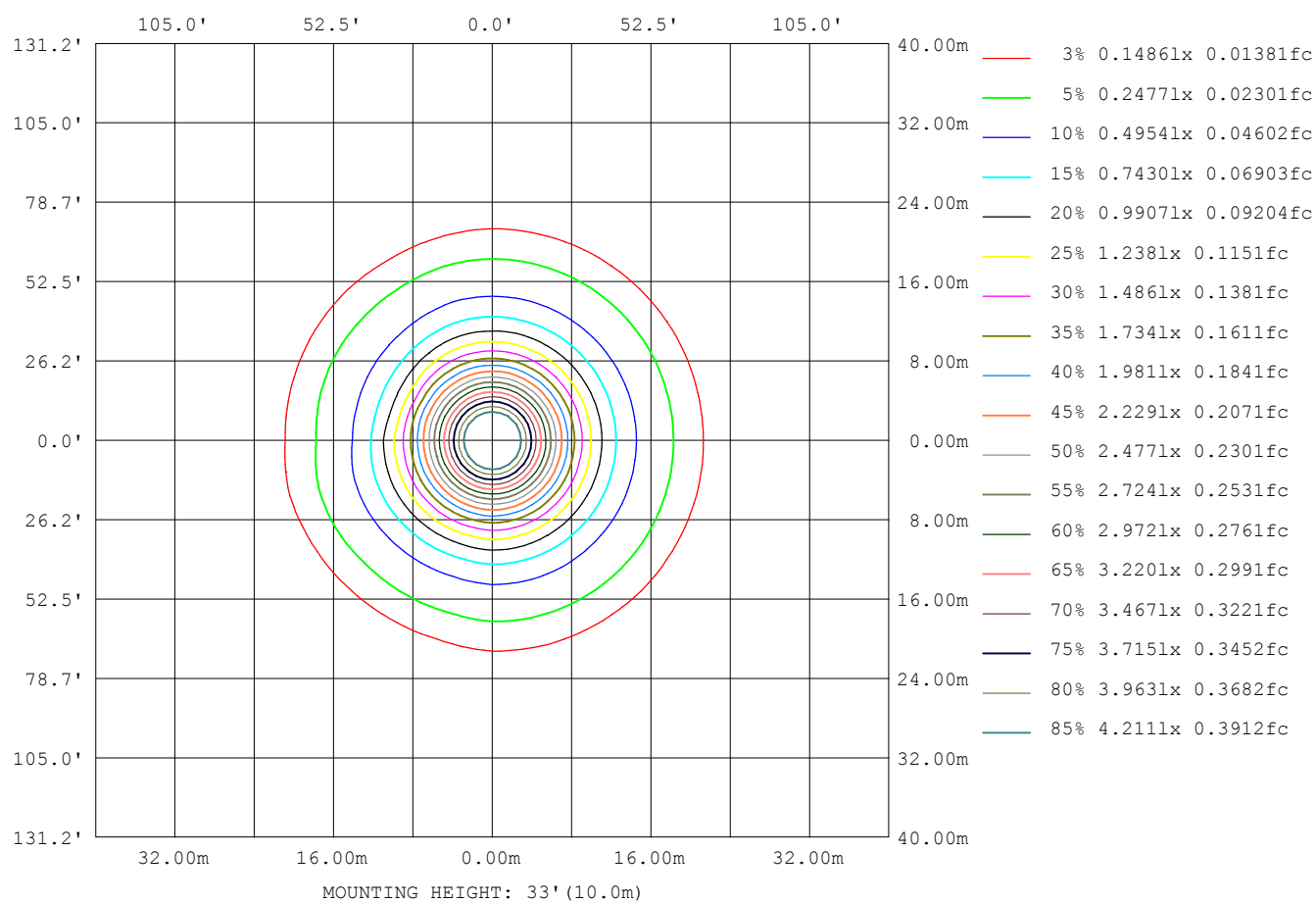
C Range: 0 - 360DEG
 C Interval: 15.0DEG
 Test Speed: HIGH
 Temperature:24.7DEG
 Operators:Hu Cong
 Test Date:2021-06-08

γ Range: 0 - 180DEG
 γ Interval: 1.0DEG
 Test System:EVERFINE GO-2000A_V1 SYSTEM V2.0.291
 Humidity:54.2%
 Test Distance:10.149m [K=1.0000]
 Remarks: standard: GB/T 9468-2008

Checker: Hucong

Assessor: Chunbo Zhou

ISOLUX DIAGRAM



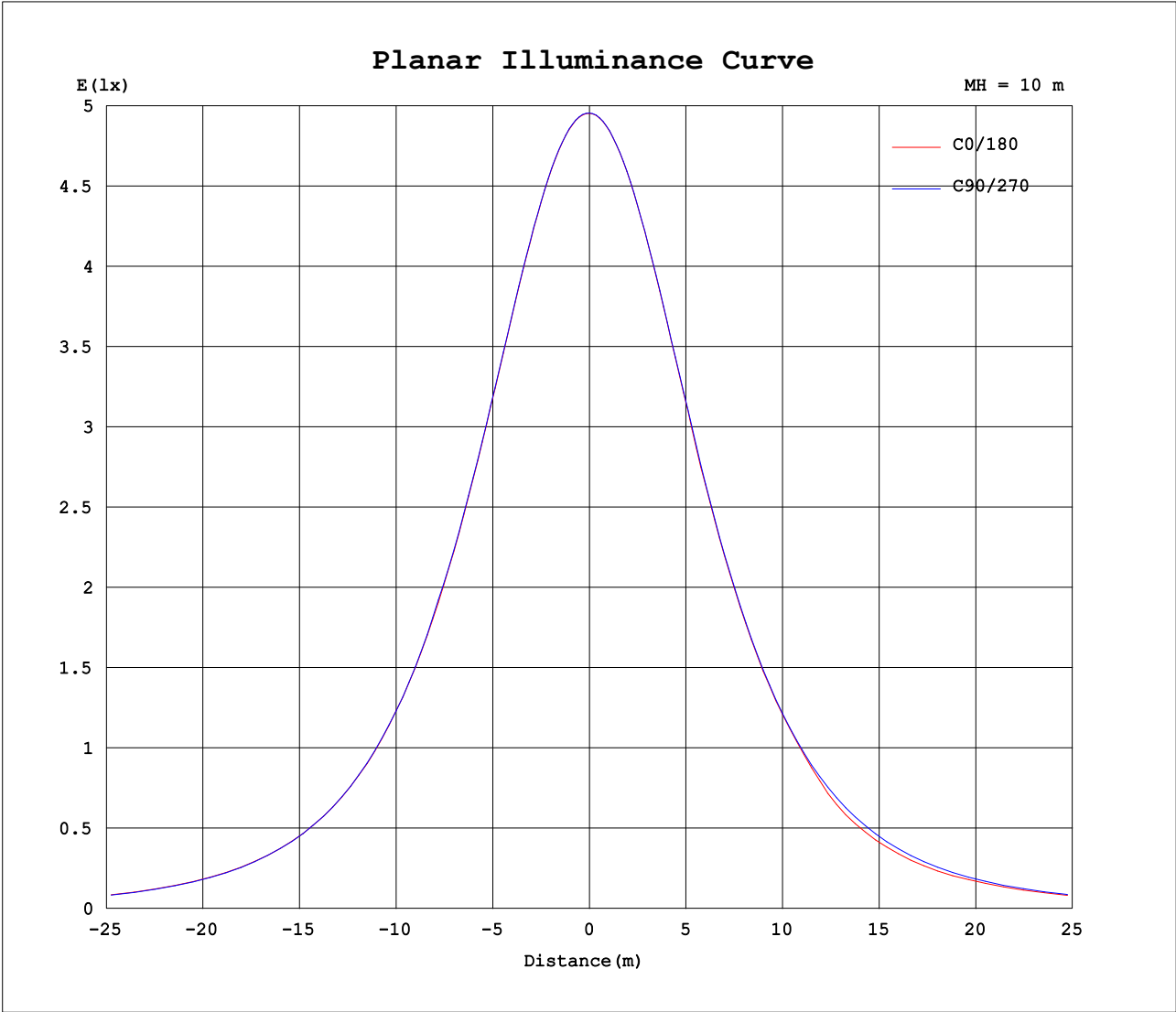
C Range: 0 - 360DEG
C Interval: 15.0DEG
Test Speed: HIGH
Temperature: 24.7DEG
Operators: Hu Cong
Test Date: 2021-06-08

γ Range: 0 - 180DEG
 γ Interval: 1.0DEG
Test System: EVERFINE GO-2000A_V1 SYSTEM V2.0.291
Humidity: 54.2%
Test Distance: 10.149m [K=1.0000]
Remarks: standard: GB/T 9468-2008

Checker: Hucong

Assessor: Chunbo Zhou

Planar Illuminance Curve



C Range: 0 - 360DEG
C Interval: 15.0DEG
Test Speed: HIGH
Temperature:24.7DEG
Operators:Hu Cong
Test Date:2021-06-08

γ Range: 0 - 180DEG
 γ Interval: 1.0DEG
Test System:EVERFINE GO-2000A_V1 SYSTEM V2.0.291
Humidity:54.2%
Test Distance:10.149m [K=1.0000]
Remarks: standard: GB/T 9468-2008

Checker: Hucong

Assessor: Chunbo Zhou

LUMINOUS DISTRIBUTION INTENSITY DATA

Table--1

UNIT: cd

C (DEG) γ (DEG)	0	15	30	45	60	75	90	105	120	135	150	165	180	195	210	225	240	255	270
0	495	495	496	496	496	496	496	496	495	495	495	495	495	495	496	496	496	496	496
5	494	494	494	495	495	494	494	494	494	493	493	493	493	493	493	493	493	493	493
10	489	489	490	490	490	490	489	489	488	488	487	487	487	487	487	487	487	487	487
15	480	480	481	481	481	481	480	480	479	478	478	477	477	477	477	477	477	477	477
20	467	468	468	469	468	468	468	467	466	465	464	464	464	463	463	463	463	463	464
25	450	451	452	453	452	452	451	451	449	448	447	447	446	445	446	446	446	446	447
30	430	431	432	432	432	432	431	429	429	427	426	423	423	425	424	425	423	426	426
35	406	406	408	407	408	407	407	402	404	402	402	400	400	401	399	401	400	402	401
40	378	378	380	380	381	379	379	373	374	374	374	372	372	371	364	372	373	375	374
45	349	348	350	349	350	349	348	340	341	342	344	343	342	322	321	333	342	344	344
50	313	313	315	315	315	314	314	303	304	304	308	308	301	285	287	294	303	311	310
55	276	276	277	277	278	277	276	262	262	266	270	271	253	252	255	257	263	274	274
60	235	236	237	237	237	236	234	220	217	217	228	230	214	221	223	220	223	233	235
65	192	193	193	194	193	193	190	177	174	176	180	188	180	182	184	184	182	187	193
70	147	148	148	149	147	147	142	134	130	132	136	140	142	141	143	143	145	144	149
75	103	103	103	103	102	101	93.5	91.4	91.0	91.7	93.9	97.3	100	100	102	102	102	101	105
80	60.5	61.1	60.1	59.9	58.3	57.6	48.6	51.9	52.1	55.4	55.2	57.6	60.8	61.3	62.6	61.8	61.5	60.3	62.6
85	26.5	26.8	25.7	25.0	23.2	21.8	13.0	20.1	21.3	23.4	24.6	26.2	27.9	28.1	28.8	27.9	27.3	25.6	26.3
90	7.06	7.12	6.40	5.54	4.23	3.01	0.22	3.42	4.49	5.62	6.30	7.26	7.83	7.81	7.87	6.93	5.98	4.62	0.74
95	0.61	0.62	0.66	0.49	0.36	0.21	0.23	0.49	0.37	0.74	1.01	1.28	1.34	1.30	1.18	0.84	0.35	0.21	0.12
100	0.49	0.56	0.55	0.54	0.39	0.32	0.37	0.62	0.51	0.44	0.38	0.39	0.39	0.47	0.40	0.39	0.36	0.26	0.21
105	0.54	0.67	0.65	0.64	0.51	0.47	0.51	0.77	0.61	0.57	0.53	0.49	0.45	0.47	0.51	0.52	0.52	0.41	0.37
110	0.64	0.79	0.76	0.72	0.56	0.62	0.65	0.92	0.80	0.72	0.60	0.64	0.59	0.59	0.66	0.61	0.67	0.60	0.54
115	0.76	0.89	0.84	0.82	0.71	0.78	0.83	1.08	0.96	0.89	0.76	0.80	0.74	0.73	0.82	0.77	0.84	0.76	0.69
120	0.93	0.99	0.95	0.97	0.87	0.95	0.98	1.25	1.14	1.04	0.95	0.96	0.90	0.93	1.00	0.95	1.02	0.97	0.89
125	1.05	1.14	1.07	1.10	1.04	1.12	1.15	1.40	1.29	1.19	1.07	1.12	1.07	1.07	1.17	1.12	1.20	1.15	1.10
130	1.18	1.27	1.20	1.24	1.19	1.29	1.29	1.55	1.45	1.36	1.24	1.30	1.24	1.23	1.34	1.29	1.37	1.29	1.23
135	1.39	1.41	1.34	1.40	1.36	1.49	1.41	1.70	1.62	1.52	1.40	1.48	1.38	1.40	1.48	1.42	1.52	1.42	1.37
140	1.51	1.53	1.44	1.55	1.52	1.62	1.54	1.80	1.74	1.65	1.52	1.59	1.50	1.51	1.60	1.54	1.65	1.53	1.53
145	1.57	1.63	1.54	1.63	1.60	1.71	1.67	1.86	1.78	1.75	1.62	1.65	1.60	1.62	1.71	1.67	1.75	1.62	1.72
150	1.67	1.73	1.64	1.75	1.69	1.79	1.76	1.91	1.88	1.82	1.69	1.74	1.72	1.73	1.81	1.78	1.86	1.74	1.77
155	1.76	1.82	1.75	1.82	1.77	1.87	1.87	1.97	1.92	1.90	1.75	1.82	1.82	1.81	1.91	1.87	1.95	1.82	1.85
160	1.87	1.92	1.87	1.92	1.87	1.95	1.91	2.02	1.97	1.97	1.83	1.88	1.93	1.91	2.01	1.98	2.01	1.90	1.92
165	1.96	1.99	1.92	1.99	1.94	2.01	1.99	2.06	2.02	2.05	1.89	1.95	2.05	2.01	2.09	2.03	2.07	1.97	2.00
170	2.05	2.07	1.98	2.07	2.00	2.08	2.04	2.08	2.07	2.10	1.97	2.00	2.11	2.09	2.17	2.10	2.11	2.03	2.07
175	2.10	2.18	2.08	2.13	2.08	2.10	2.08	2.10	2.09	2.10	1.99	2.01	2.13	2.16	2.22	2.12	2.13	2.09	2.11
180	2.14	2.19	2.20	2.18	2.10	2.10	2.10	2.10	2.10	2.10	2.02	2.02	2.14	2.23	2.21	2.13	2.13	2.10	2.10

C Range: 0 - 360DEG
C Interval: 15.0DEG
Test Speed: HIGH
Temperature:24.7DEG
Operators:Hu Cong
Test Date:2021-06-08

γ Range: 0 - 180DEG
γ Interval: 1.0DEG
Test System:EVERFINE GO-2000A_V1 SYSTEM V2.0.291
Humidity:54.2%
Test Distance:10.149m [K=1.0000]
Remarks: standard: GB/T 9468-2008

Checker: Hucong

Assessor: Chunbo Zhou

LUMINOUS DISTRIBUTION INTENSITY DATA

Table--2

UNIT: cd

C (DEG) γ (DEG)	285	300	315	330	345													
0	496	495	495	495	495													
5	493	493	493	494	494													
10	487	488	488	488	488													
15	478	478	478	479	479													
20	464	465	465	466	466													
25	447	448	448	449	449													
30	427	427	428	428	429													
35	403	402	404	403	405													
40	375	375	376	376	378													
45	345	345	346	346	347													
50	311	311	312	311	313													
55	275	274	275	275	275													
60	235	235	235	235	235													
65	192	193	192	192	192													
70	148	149	148	148	147													
75	104	105	103	104	103													
80	61.5	61.9	61.1	61.7	60.8													
85	25.5	26.1	26.0	26.8	26.5													
90	3.82	5.01	5.64	6.54	6.81													
95	0.30	0.86	0.28	0.38	0.46													
100	0.25	0.32	0.25	0.28	0.24													
105	0.31	0.41	0.36	0.38	0.31													
110	0.43	0.47	0.50	0.52	0.51													
115	0.60	0.63	0.59	0.63	0.59													
120	0.76	0.80	0.74	0.79	0.74													
125	0.96	0.99	0.94	0.98	0.92													
130	1.09	1.15	1.07	1.14	1.07													
135	1.26	1.28	1.22	1.28	1.20													
140	1.40	1.41	1.34	1.40	1.31													
145	1.52	1.54	1.44	1.51	1.42													
150	1.62	1.65	1.56	1.61	1.54													
155	1.73	1.75	1.65	1.72	1.65													
160	1.83	1.85	1.75	1.80	1.75													
165	1.90	1.94	1.89	1.91	1.85													
170	1.99	2.03	1.96	1.98	1.91													
175	2.05	2.09	2.00	2.05	1.98													
180	2.10	2.10	2.10	2.09	2.00													

C Range: 0 - 360DEG
 C Interval: 15.0DEG
 Test Speed: HIGH
 Temperature:24.7DEG
 Operators:Hu Cong
 Test Date:2021-06-08

γ Range: 0 - 180DEG
 γ Interval: 1.0DEG
 Test System:EVERFINE GO-2000A_V1 SYSTEM V2.0.291
 Humidity:54.2%
 Test Distance:10.149m [K=1.0000]
 Remarks: standard: GB/T 9468-2008

Checker: Hucong

Assessor: Chunbo Zhou