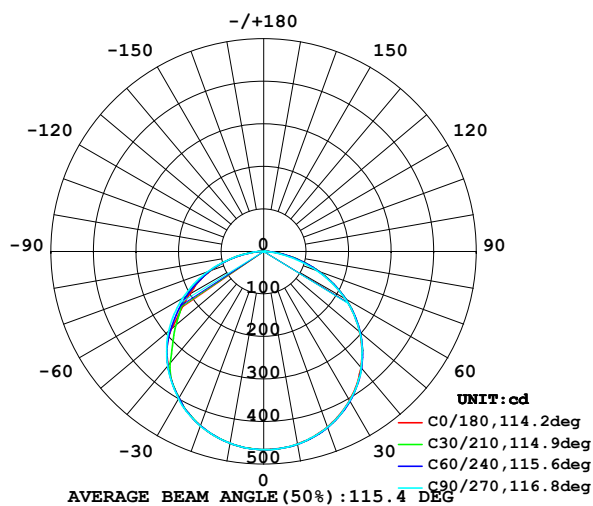


LUMINAIRE PHOTOMETRIC TEST REPORT

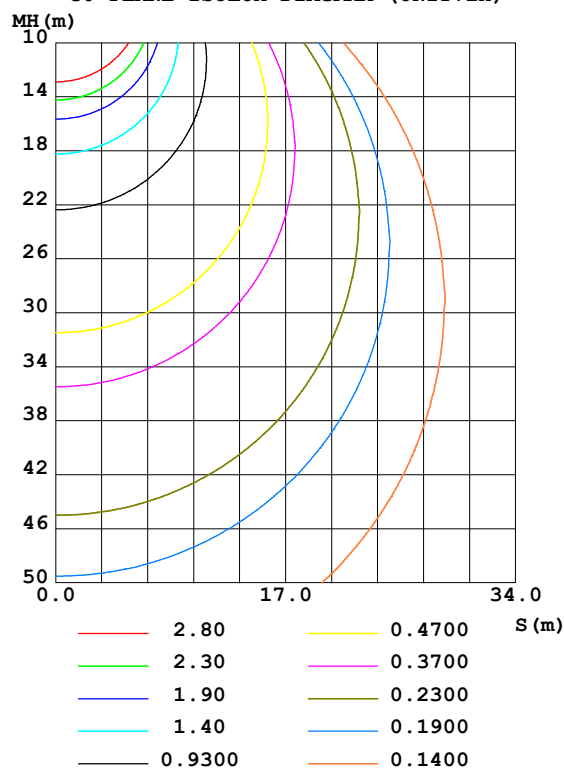
Test:U:12.00V I:1.243A P:14.92W PF:1.000 Lamp Flux:1386.06x1 lm		
NAME: EKF4115HLC90	SUR.:1*0.1	SERIAL No.:

DATA OF LAMP		PHOTOMETRIC DATA Eff: 92.92 lm/W			
MODEL	EKF4115HLC90	I _{max} (cd)	466.0	S/MH (C0/180)	1.27
NOMINAL POWER (W)		LOR (%)	100.0	S/MH (C90/270)	1.28
RATED VOLTAGE (V)	12	TOTAL FLUX (lm)	1386.1	η UP, DN (C0-180)	0.3, 49.8
NOMINAL FLUX (lm)	1386.06	CIE CLASS	DIRECT	η UP, DN (C180-360)	0.2, 49.7
LAMPS INSIDE	1	η up (%)	0.5	CIBSE SHR NOM	1.25
TEST VOLTAGE (V)	12	η down (%)	99.5	CIBSE SHR MAX	1.35

LUMINOUS INTENSITY DISTRIBUTION DIAGRAM



C0 PLANE ISOLUX DIAGRAM (UNIT:lx)



C Range: 0 - 360DEG
 C Interval: 15.0DEG
 Test Speed: HIGH
 Temperature: 24.7DEG
 Operators: Hu Cong
 Test Date: 2021-06-08

γ Range: 0 - 180DEG
 γ Interval: 1.0DEG
 Test System: EVERFINE GO-2000A_V1 SYSTEM V2.0.291
 Humidity: 54.2%
 Test Distance: 10.149m [K=1.0000]
 Remarks: standard: GB/T 9468-2008

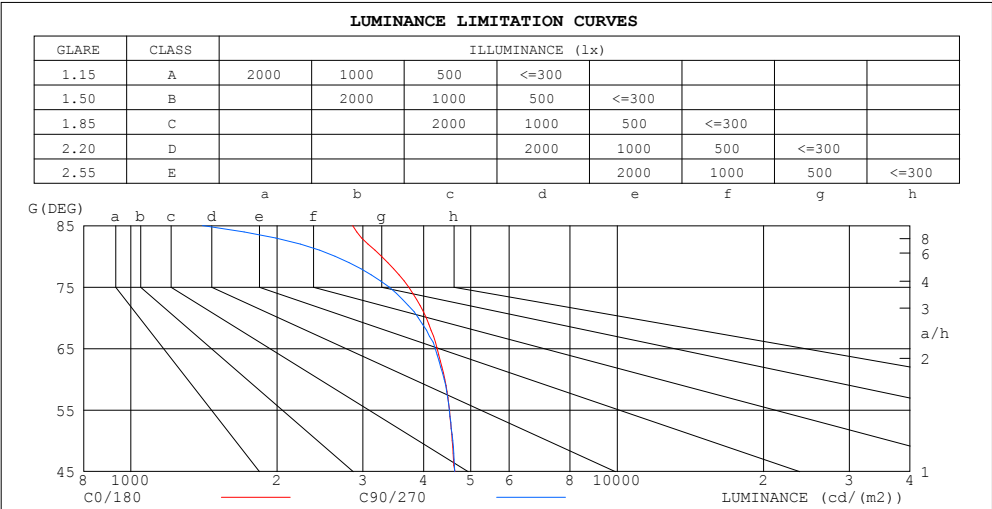
Checker: Hucong

Assessor: Chunbo Zhou

ZONAL FLUX DIAGRAM
AND LUMINANCE LIMITATION CURVES

ZONAL FLUX DIAGRAM:

γ	C0	C45	C90	C135	C180	C225	C270	C315	γ	Φ zone	Φ total	%lum, lamp
10	459.4	460.3	459.7	458.6	457.8	457.4	457.9	458.3	0- 10	44.12	44.12	3.18,3.18
20	438.8	440.6	439.5	437.4	435.8	435.0	436.3	437.0	10- 20	127.0	171.2	12.3,12.3
30	404.0	406.1	405.0	401.0	397.9	399.5	400.0	402.1	20- 30	194.4	365.6	26.4,26.4
40	355.6	356.9	356.7	351.8	350.0	349.6	351.6	353.8	30- 40	237.1	602.7	43.5,43.5
50	294.4	295.7	295.4	286.2	282.8	276.3	291.6	293.1	40- 50	248.4	851.1	61.4,61.4
60	221.3	222.4	220.4	204.3	200.8	207.2	220.5	220.9	50- 60	226.2	1077	77.7,77.7
70	138.4	139.6	133.4	124.3	133.3	134.4	140.5	138.9	60- 70	174.0	1251	90.3,90.3
80	56.88	56.35	45.69	52.07	57.18	58.07	58.81	57.42	70- 80	99.69	1351	97.5,97.5
90	6.638	5.205	0.2046	5.282	7.364	6.517	0.6923	5.298	80- 90	28.11	1379	99.5,99.5
100	0.4647	0.5043	0.3485	0.4103	0.3695	0.3631	0.2020	0.2394	90-100	1.370	1380	99.6,99.6
110	0.5981	0.6724	0.6109	0.6728	0.5514	0.5715	0.5047	0.4704	100-110	0.4955	1381	99.6,99.6
120	0.8732	0.9078	0.9210	0.9818	0.8481	0.8936	0.8406	0.6914	110-120	0.7219	1382	99.7,99.7
130	1.109	1.164	1.217	1.279	1.170	1.210	1.157	1.008	120-130	0.9241	1383	99.7,99.7
140	1.421	1.453	1.452	1.554	1.405	1.452	1.441	1.257	130-140	1.018	1384	99.8,99.8
150	1.567	1.641	1.654	1.715	1.614	1.674	1.661	1.466	140-150	0.9608	1385	99.9,99.9
160	1.755	1.802	1.795	1.850	1.816	1.862	1.809	1.649	150-160	0.7876	1385	99.9,99.9
170	1.923	1.943	1.916	1.970	1.984	1.970	1.950	1.842	160-170	0.5242	1386	100,100
180	2.010	2.051	1.970	1.977	2.010	2.004	1.977	1.970	170-180	0.1862	1386	100,100
DEG	LUMINOUS INTENSITY:cd									UNIT:lm		



LUMINANCE cd/(m2)		
G (DEG)	C0/180	C90/270
85	2857	1405
80	3275	2631
75	3728	3396
70	4048	3902
65	4267	4229
60	4425	4408
55	4521	4518
50	4581	4595
45	4640	4632

C Range: 0 - 360DEG
C Interval: 15.0DEG
Test Speed: HIGH
Temperature:24.7DEG
Operators:Hu Cong
Test Date:2021-06-08

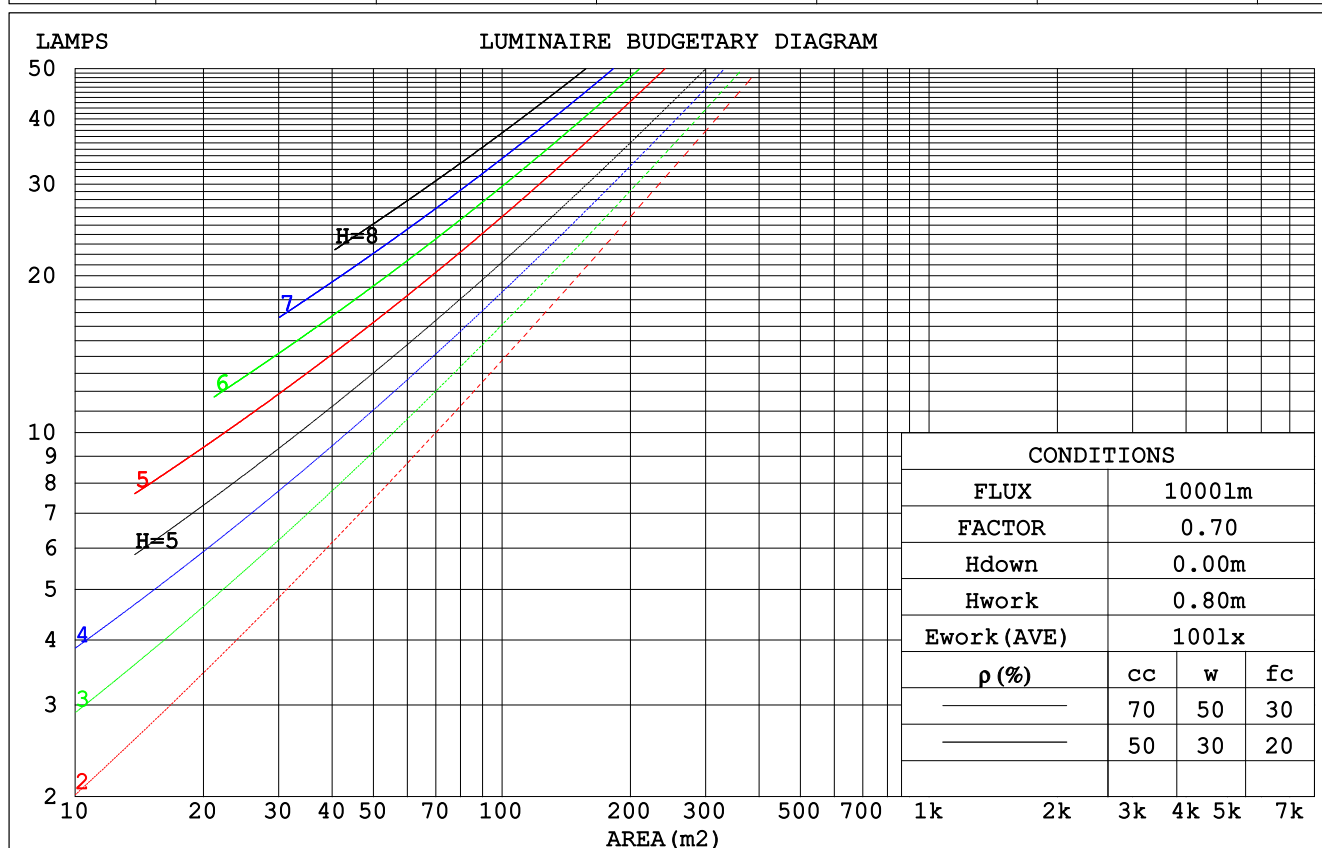
γ Range: 0 - 180DEG
 γ Interval: 1.0DEG
Test System:EVERFINE GO-2000A_V1 SYSTEM V2.0.291
Humidity:54.2%
Test Distance:10.149m [K=1.0000]
Remarks: standard: GB/T 9468-2008

Checker: Hucong

Assessor: Chunbo Zhou

CU AND LUMINAIRE BUDGETARY ESTIMATE DIAGRAM

pcc	80%			70%			50%			30%			10%			0
p _w	50%	30%	10%	50%	30%	10%	50%	30%	10%	50%	30%	10%	50%	30%	10%	0
p _{fc}	20%			20%			20%			20%			20%			0
RCR	RCR:Room Cavity Ratio						Coefficients of Utilization(CU)									
0.0	1.19	1.19	1.19	1.16	1.16	1.16	1.11	1.11	1.11	1.06	1.06	1.06	1.02	1.02	1.02	.99
1.0	1.04	.99	.95	1.01	.97	.94	.97	.94	.91	.93	.90	.88	.89	.87	.85	.83
2.0	.90	.83	.77	.88	.82	.76	.84	.79	.74	.81	.77	.73	.78	.74	.71	.69
3.0	.79	.71	.64	.77	.70	.63	.74	.68	.62	.71	.66	.61	.69	.64	.60	.58
4.0	.70	.61	.54	.68	.60	.54	.66	.59	.53	.63	.57	.52	.61	.56	.51	.49
5.0	.62	.53	.46	.61	.52	.46	.59	.51	.46	.57	.50	.45	.55	.49	.44	.42
6.0	.56	.47	.40	.55	.46	.40	.53	.45	.40	.51	.45	.39	.50	.44	.39	.37
7.0	.51	.42	.36	.50	.41	.35	.48	.41	.35	.47	.40	.35	.45	.39	.35	.32
8.0	.46	.38	.32	.45	.37	.32	.44	.37	.31	.43	.36	.31	.42	.35	.31	.29
9.0	.42	.34	.28	.42	.34	.28	.41	.33	.28	.39	.33	.28	.38	.32	.28	.26
10.0	.39	.31	.26	.38	.31	.26	.37	.30	.26	.36	.30	.25	.36	.30	.25	.23



C Range: 0 - 360DEG
 C Interval: 15.0DEG
 Test Speed: HIGH
 Temperature: 24.7DEG
 Operators: Hu Cong
 Test Date: 2021-06-08

γ Range: 0 - 180DEG
 γ Interval: 1.0DEG
 Test System: EVERFINE GO-2000A_V1 SYSTEM V2.0.291
 Humidity: 54.2%
 Test Distance: 10.149m [K=1.0000]
 Remarks: standard: GB/T 9468-2008

Checker: Hucong

Assessor: Chunbo Zhou

WEC AND CCEC

pcc	80%			70%			50%			30%			10%			0
pw	50%	30%	10%	50%	30%	10%	50%	30%	10%	50%	30%	10%	50%	30%	10%	0
pfc	20%			20%			20%			20%			20%			0
RCR	RCR:Room Cavity Ratio						Wall Exitance Coefficients (WEC)									
0.0																
1.0	.314	.178	.057	.306	.175	.056	.293	.168	.054	.280	.162	.052	.269	.156	.050	
2.0	.295	.161	.050	.288	.159	.049	.276	.154	.048	.265	.149	.047	.255	.144	.045	
3.0	.272	.145	.043	.267	.143	.043	.256	.139	.042	.246	.135	.041	.237	.131	.041	
4.0	.251	.130	.038	.246	.129	.038	.237	.126	.037	.228	.122	.037	.220	.119	.036	
5.0	.232	.118	.034	.228	.117	.034	.219	.114	.034	.211	.112	.033	.204	.109	.033	
6.0	.215	.108	.031	.211	.107	.031	.204	.104	.030	.197	.102	.030	.190	.100	.030	
7.0	.200	.099	.028	.196	.098	.028	.190	.096	.028	.183	.094	.027	.178	.092	.027	
8.0	.187	.091	.026	.184	.090	.026	.178	.089	.025	.172	.087	.025	.167	.086	.025	
9.0	.175	.085	.024	.172	.084	.024	.167	.082	.023	.162	.081	.023	.157	.080	.023	
10.0	.164	.079	.022	.162	.078	.022	.157	.077	.022	.152	.076	.022	.148	.074	.021	

pcc	80%			70%			50%			30%			10%			0
pw	50%	30%	10%	50%	30%	10%	50%	30%	10%	50%	30%	10%	50%	30%	10%	0
pfc	20%			20%			20%			20%			20%			0
RCR	RCR:Room Cavity Ratio						Ceiling Cavity Exitance Coefficients (CCEC)									
0.0	.194	.194	.194	.166	.166	.166	.113	.113	.113	.065	.065	.065	.021	.021	.021	
1.0	.184	.160	.138	.158	.137	.119	.108	.094	.082	.062	.055	.048	.020	.018	.015	
2.0	.177	.136	.102	.151	.117	.088	.104	.081	.061	.060	.047	.036	.019	.015	.012	
3.0	.169	.118	.078	.145	.102	.068	.099	.071	.047	.057	.041	.028	.018	.013	.009	
4.0	.161	.105	.062	.138	.091	.054	.095	.063	.038	.055	.037	.022	.018	.012	.007	
5.0	.154	.095	.051	.132	.082	.044	.091	.057	.031	.053	.034	.019	.017	.011	.006	
6.0	.147	.086	.043	.126	.075	.037	.087	.052	.026	.050	.031	.016	.016	.010	.005	
7.0	.140	.079	.037	.120	.069	.032	.083	.048	.023	.048	.028	.014	.016	.009	.004	
8.0	.133	.074	.033	.115	.064	.028	.079	.045	.020	.046	.026	.012	.015	.009	.004	
9.0	.127	.069	.029	.110	.060	.025	.076	.042	.018	.044	.025	.011	.014	.008	.004	
10.0	.122	.064	.026	.105	.056	.023	.073	.039	.016	.042	.023	.010	.014	.008	.003	

C Range: 0 - 360DEG
 C Interval: 15.0DEG
 Test Speed: HIGH
 Temperature:24.7DEG
 Operators:Hu Cong
 Test Date:2021-06-08

γ Range: 0 - 180DEG
 γ Interval: 1.0DEG
 Test System:EVERFINE GO-2000A_V1 SYSTEM V2.0.291
 Humidity:54.2%
 Test Distance:10.149m [K=1.0000]
 Remarks: standard: GB/T 9468-2008

Checker: Hucong

Assessor: Chunbo Zhou

UGR(Unified Glare Rating) Table

ceiling/cavity	0.7	0.7	0.5	0.5	0.3	0.7	0.7	0.5	0.5	0.3
walls	0.5	0.3	0.5	0.3	0.3	0.5	0.3	0.5	0.3	0.3
working plane	0.2	0.2	0.2	0.2	0.2	0.2	0.2	0.2	0.2	0.2
Room dimensions	Viewed crosswise					Viewed endwise				
x = 2H y = 2H	18.2	19.7	18.5	20.0	20.2	18.2	19.8	18.5	20.0	20.2
3H	19.8	21.2	20.1	21.4	21.7	19.8	21.2	20.1	21.4	21.7
4H	20.4	21.7	20.7	22.0	22.3	20.3	21.6	20.6	21.9	22.2
6H	20.8	22.1	21.1	22.3	22.6	20.6	21.9	21.0	22.2	22.5
8H	20.9	22.1	21.3	22.4	22.7	20.7	21.9	21.0	22.2	22.5
12H	21.0	22.2	21.4	22.5	22.8	20.7	21.9	21.1	22.2	22.5
4H 2H	18.9	20.2	19.2	20.5	20.7	18.9	20.2	19.2	20.5	20.7
3H	20.6	21.8	20.9	22.1	22.4	20.6	21.7	20.9	22.0	22.4
4H	21.3	22.4	21.7	22.7	23.1	21.2	22.3	21.6	22.7	23.0
6H	21.8	22.8	22.3	23.2	23.5	21.7	22.7	22.1	23.0	23.4
8H	22.0	22.9	22.4	23.3	23.7	21.8	22.7	22.2	23.1	23.5
12H	22.1	23.0	22.6	23.4	23.8	21.9	22.7	22.3	23.1	23.5
8H 4H	21.6	22.5	22.0	22.8	23.2	21.5	22.4	21.9	22.8	23.2
6H	22.3	23.0	22.7	23.4	23.8	22.1	22.9	22.6	23.3	23.7
8H	22.5	23.2	23.0	23.6	24.1	22.3	23.0	22.8	23.4	23.9
12H	22.7	23.3	23.2	23.7	24.2	22.4	23.0	22.9	23.4	23.9
12H 4H	21.6	22.4	22.0	22.8	23.2	21.5	22.3	22.0	22.7	23.2
6H	22.3	23.0	22.8	23.4	23.9	22.2	22.8	22.6	23.3	23.7
8H	22.6	23.2	23.1	23.6	24.1	22.4	23.0	22.9	23.4	23.9
Variations with the observer position at spacings:										
S = 1.0H	+ 0.1 / - 0.2					+ 0.2 / - 0.2				
1.5H	+ 0.2 / - 0.3					+ 0.2 / - 0.4				
2.0H	+ 0.2 / - 0.3					+ 0.2 / - 0.4				

CIE Pub.117 Corrected 1386 lm Total Lamp Luminous Flux.(8log(F/F0) = 1.1)

C Range: 0 - 360DEG
 C Interval: 15.0DEG
 Test Speed: HIGH
 Temperature:24.7DEG
 Operators:Hu Cong
 Test Date:2021-06-08

γ Range: 0 - 180DEG
 γ Interval: 1.0DEG
 Test System:EVERFINE GO-2000A_V1 SYSTEM V2.0.291
 Humidity:54.2%
 Test Distance:10.149m [K=1.0000]
 Remarks: standard: GB/T 9468-2008

Checker: Hucong

Assessor: Chunbo Zhou

UTILIZATION FACTORS TABLE

REFLECTANCE										
Ceiling	0.8	0.8	0.8	0.7	0.7	0.7	0.5	0.5	0.5	0
Walls	0.7	0.5	0.3	0.7	0.5	0.3	0.7	0.5	0.3	0
Working plane	0.2	0.2	0.2	0.2	0.2	0.2	0.2	0.2	0.2	0
ROOM INDEX	UTILIZATION FACTORS (PERCENT) $k(RI) \times RCR = 5$									
$k = 0.60$	57	45	38	56	45	38	55	44	38	31
0.80	67	55	48	66	55	48	64	54	47	40
1.00	75	64	57	74	63	56	72	65	56	49
1.25	82	72	65	81	71	64	78	70	63	56
1.50	88	77	70	86	77	70	83	75	69	61
2.00	94	86	79	93	85	78	89	82	77	69
2.50	98	91	84	96	89	83	92	86	82	73
3.00	102	95	89	100	93	88	95	90	86	77
4.00	106	100	95	103	98	94	99	95	91	82
5.00	108	103	99	106	101	98	101	98	95	85
ROOM INDEX	UF (total)									Direct
According to DIN EN 13032-2 2004			Suspended					SHRNOM = 1.25		

C Range: 0 - 360DEG
 C Interval: 15.0DEG
 Test Speed: HIGH
 Temperature: 24.7DEG
 Operators: Hu Cong
 Test Date: 2021-06-08

Checker: Hucong

γ Range: 0 - 180DEG
 γ Interval: 1.0DEG
 Test System: EVERFINE GO-2000A_V1 SYSTEM V2.0.291
 Humidity: 54.2%
 Test Distance: 10.149m [K=1.0000]
 Remarks: standard: GB/T 9468-2008

Assessor: Chunbo Zhou

ISOCANDELA DIAGRAM

Conical surface Flux(90deg):

727.61 lm

%lum = 52.5%

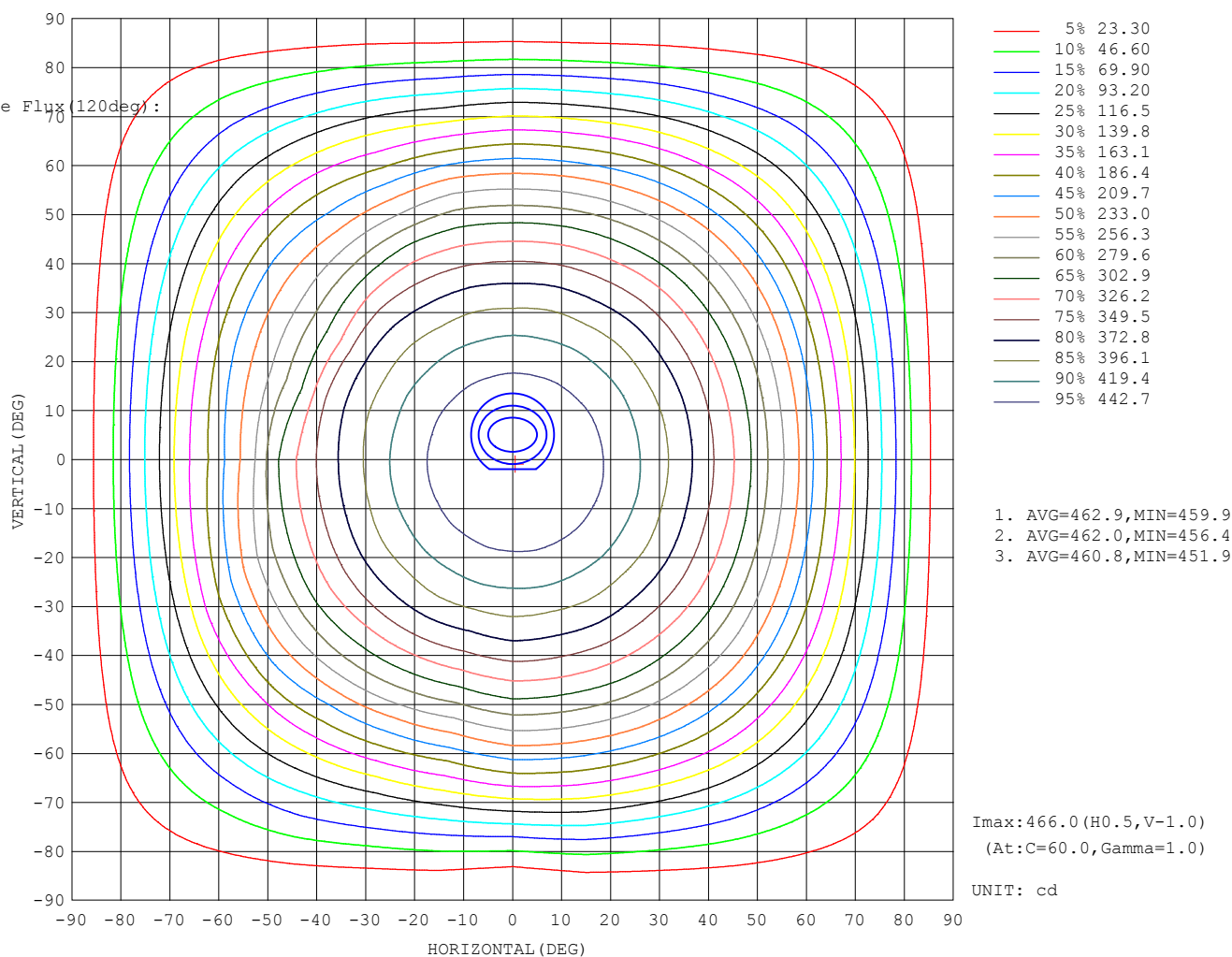
%lamp = 52.5%

Conical surface Flux(120deg):

1077.3 lm

%lum = 77.7%

%lamp = 77.7%



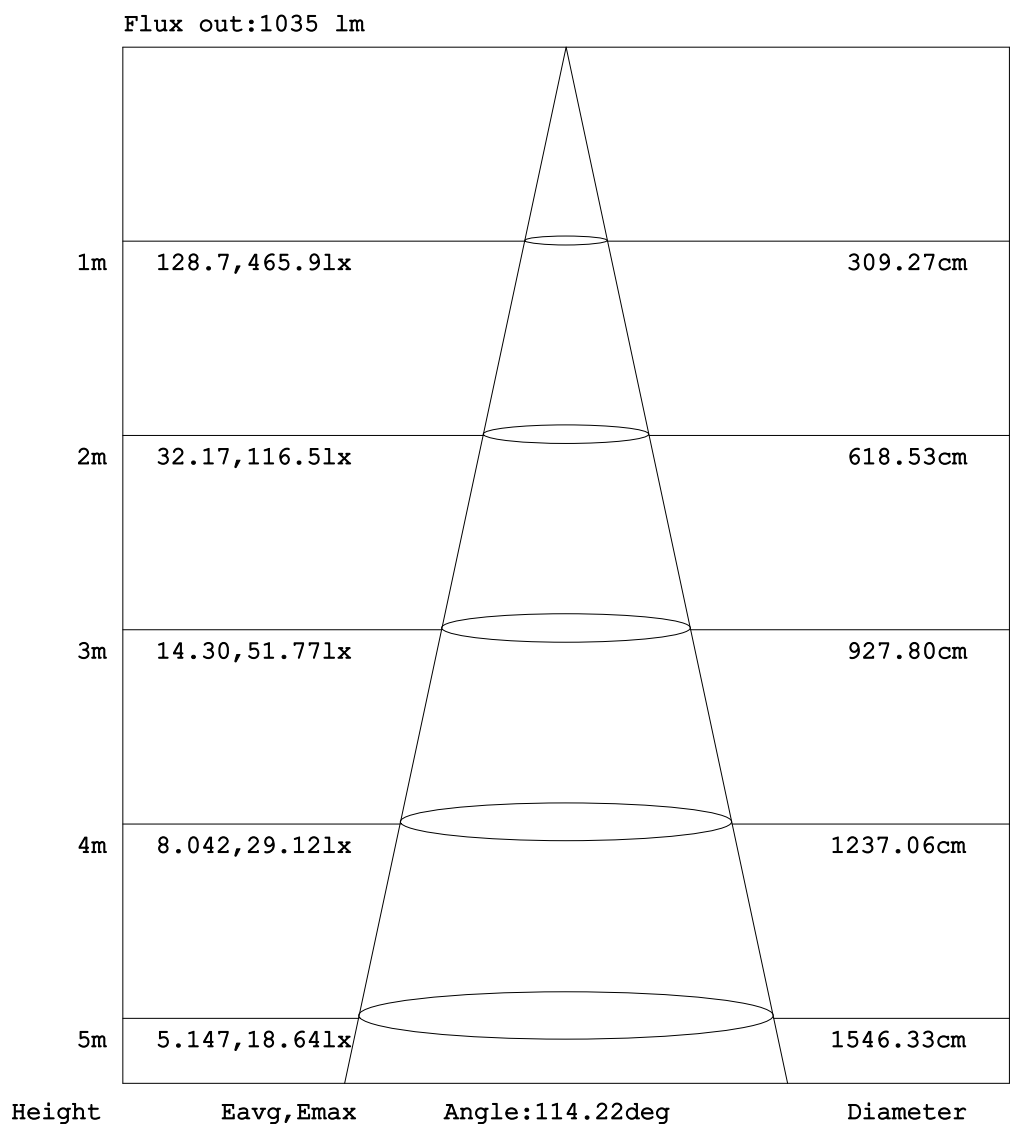
C Range: 0 - 360DEG
C Interval: 15.0DEG
Test Speed: HIGH
Temperature:24.7DEG
Operators:Hu Cong
Test Date:2021-06-08

γ Range: 0 - 180DEG
 γ Interval: 1.0DEG
Test System:EVERFINE GO-2000A_V1 SYSTEM V2.0.291
Humidity:54.2%
Test Distance:10.149m [K=1.0000]
Remarks: standard: GB/T 9468-2008

Checker: Hucong

Assessor: Chunbo Zhou

AAI Figure



Note:The Curves indicate the illuminated area and the average illumination when the luminaire is at different distance.

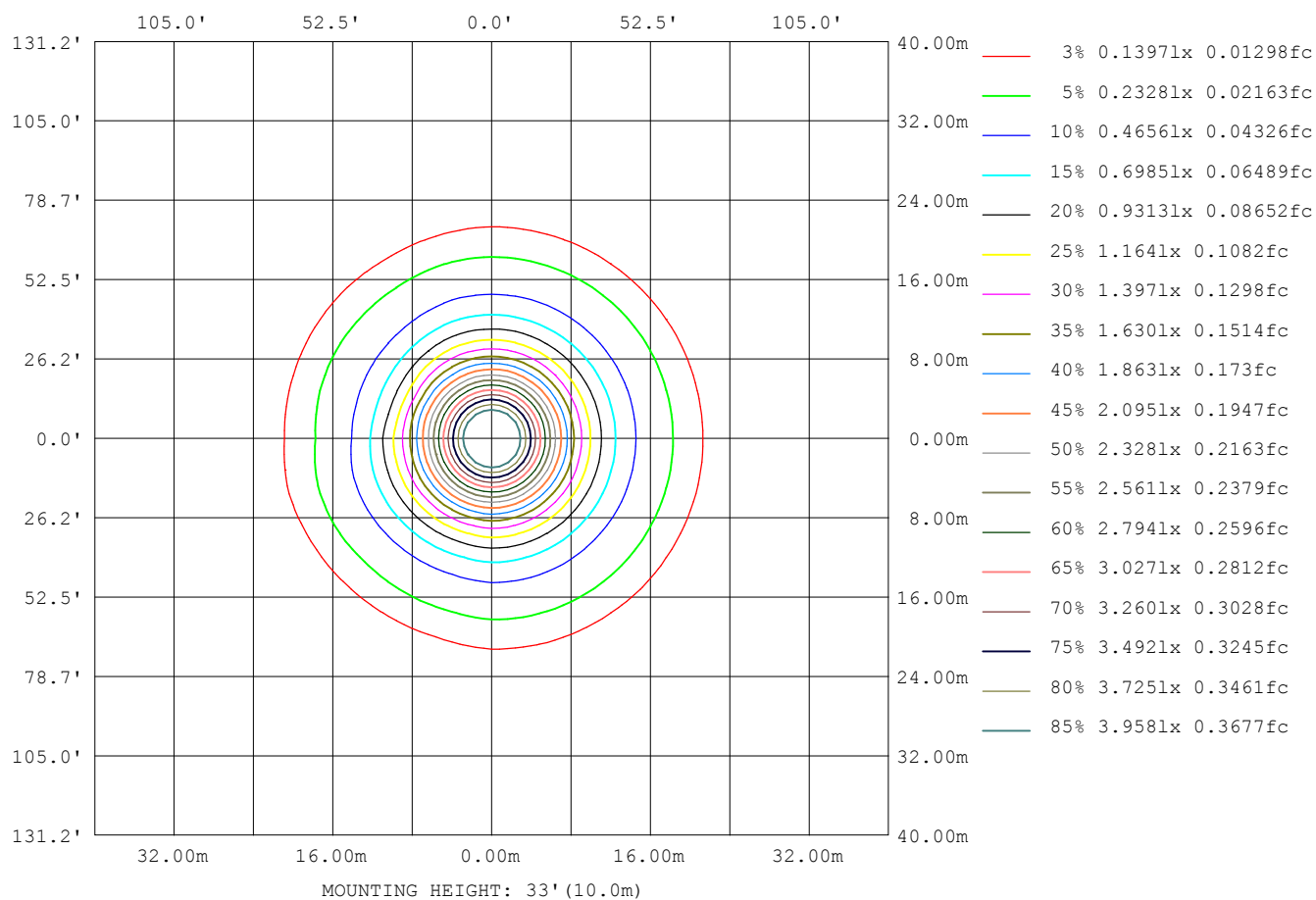
C Range: 0 - 360DEG
C Interval: 15.0DEG
Test Speed: HIGH
Temperature:24.7DEG
Operators:Hu Cong
Test Date:2021-06-08

γ Range: 0 - 180DEG
 γ Interval: 1.0DEG
Test System:EVERFINE GO-2000A_V1 SYSTEM V2.0.291
Humidity:54.2%
Test Distance:10.149m [K=1.0000]
Remarks: standard: GB/T 9468-2008

Checker: Hucong

Assessor: Chunbo Zhou

ISOLUX DIAGRAM



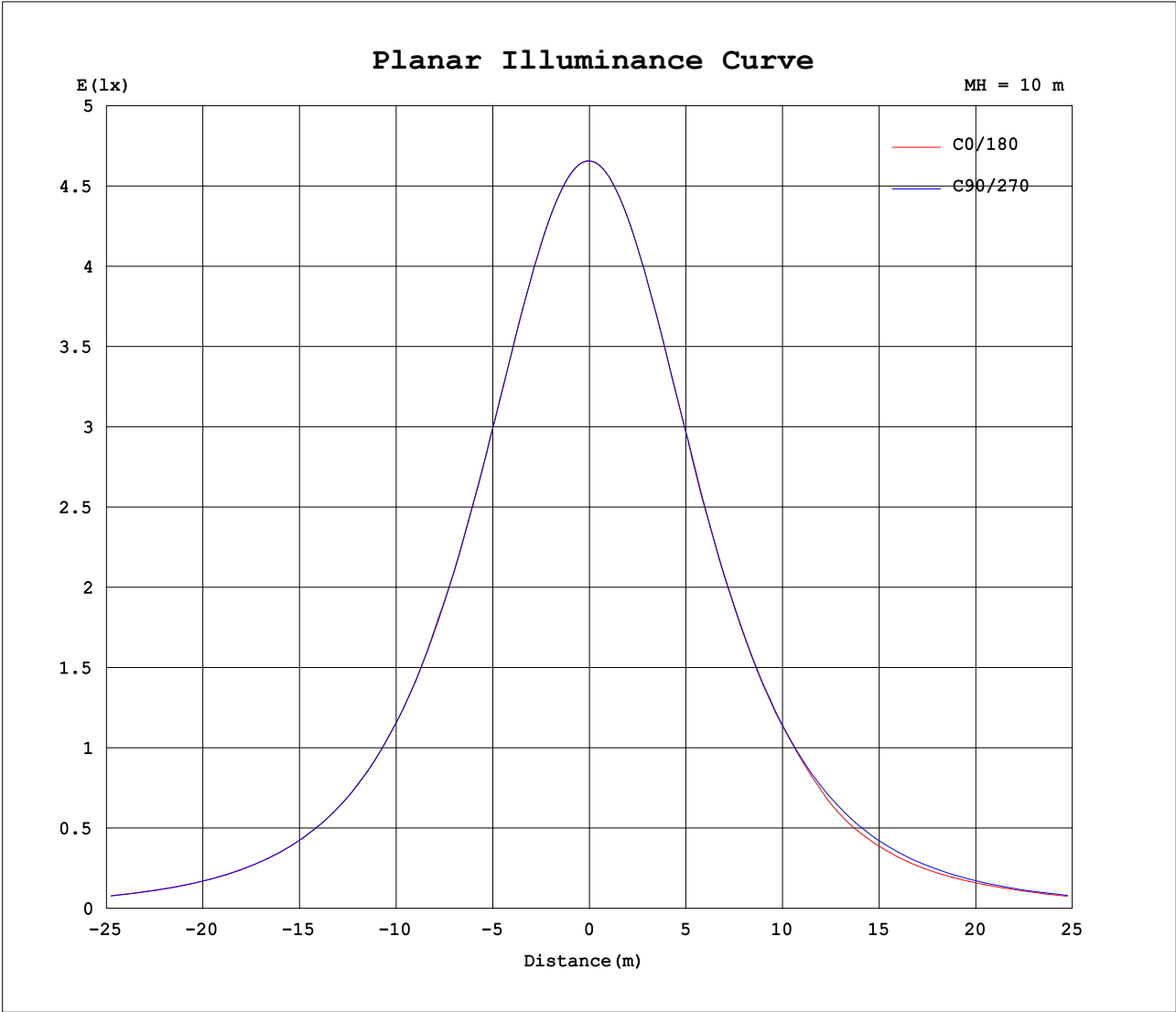
C Range: 0 - 360DEG
C Interval: 15.0DEG
Test Speed: HIGH
Temperature: 24.7DEG
Operators: Hu Cong
Test Date: 2021-06-08

Checker: Hucong

γ Range: 0 - 180DEG
 γ Interval: 1.0DEG
Test System: EVERFINE GO-2000A_V1 SYSTEM V2.0.291
Humidity: 54.2%
Test Distance: 10.149m [K=1.0000]
Remarks: standard: GB/T 9468-2008

Assessor: Chunbo Zhou

Planar Illuminance Curve



C Range: 0 - 360DEG
C Interval: 15.0DEG
Test Speed: HIGH
Temperature:24.7DEG
Operators:Hu Cong
Test Date:2021-06-08

γ Range: 0 - 180DEG
 γ Interval: 1.0DEG
Test System:EVERFINE GO-2000A_V1 SYSTEM V2.0.291
Humidity:54.2%
Test Distance:10.149m [K=1.0000]
Remarks: standard: GB/T 9468-2008

Checker: Hucong

Assessor: Chunbo Zhou

LUMINOUS DISTRIBUTION INTENSITY DATA

Table--1

UNIT: cd

C (DEG) γ (DEG)	0	15	30	45	60	75	90	105	120	135	150	165	180	195	210	225	240	255	270
0	466	466	466	466	466	466	466	466	466	466	466	465	466	466	466	466	466	466	466
5	464	465	465	465	465	465	465	464	464	464	464	463	464	463	464	463	464	464	464
10	459	460	460	460	460	460	460	460	459	459	458	458	458	457	458	457	458	458	458
15	451	452	452	452	452	452	451	451	450	450	449	449	449	448	448	448	448	448	449
20	439	440	440	441	440	440	440	439	438	437	436	436	436	435	435	435	436	436	436
25	423	424	424	425	425	425	424	424	422	422	420	420	420	419	419	419	420	419	420
30	404	405	406	406	406	406	405	403	403	401	401	398	398	399	398	399	398	400	400
35	381	381	383	383	384	382	383	378	380	378	378	376	376	377	376	377	376	378	377
40	356	356	357	357	358	357	357	351	351	352	352	350	350	349	342	350	351	352	352
45	328	328	329	328	329	328	328	320	320	321	323	322	322	302	302	313	321	324	323
50	294	294	296	296	296	295	295	284	285	286	290	289	283	268	270	276	285	292	292
55	259	259	261	261	261	260	259	247	246	250	253	254	238	237	239	241	247	258	257
60	221	222	223	222	223	222	220	207	204	204	214	216	201	207	210	207	210	219	221
65	180	181	181	182	181	181	179	166	164	165	169	177	169	171	173	173	171	176	181
70	138	139	139	140	139	139	133	126	123	124	128	132	133	133	135	134	136	135	140
75	96.5	97.2	96.5	96.8	95.6	95.4	87.9	85.9	85.5	86.2	88.2	91.4	94.2	94.4	95.8	95.4	96.2	94.7	98.9
80	56.9	57.4	56.5	56.4	54.8	54.1	45.7	48.7	49.0	52.1	51.9	54.2	57.2	57.6	58.8	58.1	57.8	56.7	58.8
85	24.9	25.2	24.2	23.5	21.8	20.5	12.2	18.9	20.0	22.0	23.1	24.7	26.2	26.4	27.1	26.2	25.6	24.1	24.7
90	6.64	6.70	6.02	5.21	3.98	2.83	0.20	3.22	4.22	5.28	5.92	6.83	7.36	7.34	7.40	6.52	5.62	4.34	0.69
95	0.57	0.58	0.62	0.46	0.34	0.20	0.21	0.46	0.34	0.70	0.95	1.20	1.26	1.23	1.11	0.79	0.33	0.20	0.11
100	0.46	0.52	0.52	0.50	0.37	0.30	0.35	0.58	0.48	0.41	0.36	0.37	0.37	0.44	0.38	0.36	0.34	0.25	0.20
105	0.51	0.63	0.61	0.60	0.48	0.44	0.48	0.72	0.58	0.53	0.50	0.46	0.42	0.44	0.48	0.49	0.49	0.38	0.34
110	0.60	0.74	0.72	0.67	0.52	0.59	0.61	0.87	0.75	0.67	0.56	0.60	0.55	0.56	0.62	0.57	0.63	0.56	0.50
115	0.71	0.84	0.79	0.77	0.67	0.73	0.78	1.02	0.90	0.83	0.71	0.75	0.70	0.69	0.77	0.73	0.79	0.72	0.65
120	0.87	0.93	0.89	0.91	0.82	0.89	0.92	1.17	1.07	0.98	0.89	0.90	0.85	0.87	0.94	0.89	0.96	0.91	0.84
125	0.99	1.07	1.01	1.03	0.98	1.05	1.08	1.32	1.22	1.12	1.01	1.06	1.01	1.01	1.10	1.06	1.13	1.08	1.04
130	1.11	1.20	1.13	1.16	1.12	1.22	1.22	1.46	1.36	1.28	1.16	1.22	1.17	1.16	1.26	1.21	1.29	1.22	1.16
135	1.31	1.33	1.26	1.32	1.28	1.40	1.32	1.59	1.53	1.43	1.32	1.39	1.30	1.32	1.39	1.34	1.43	1.33	1.28
140	1.42	1.44	1.36	1.45	1.43	1.53	1.45	1.69	1.63	1.55	1.43	1.49	1.41	1.42	1.50	1.45	1.55	1.44	1.44
145	1.48	1.53	1.45	1.53	1.51	1.61	1.57	1.75	1.67	1.64	1.52	1.55	1.51	1.53	1.61	1.57	1.65	1.53	1.61
150	1.57	1.63	1.54	1.64	1.59	1.68	1.65	1.80	1.77	1.71	1.59	1.63	1.61	1.63	1.70	1.67	1.75	1.63	1.66
155	1.65	1.71	1.65	1.72	1.66	1.76	1.76	1.85	1.81	1.79	1.65	1.71	1.71	1.70	1.80	1.76	1.84	1.71	1.74
160	1.75	1.80	1.76	1.80	1.76	1.83	1.80	1.90	1.86	1.85	1.72	1.77	1.82	1.80	1.89	1.86	1.89	1.78	1.81
165	1.84	1.87	1.80	1.87	1.82	1.89	1.87	1.94	1.90	1.92	1.78	1.84	1.92	1.89	1.96	1.91	1.95	1.85	1.88
170	1.92	1.95	1.86	1.94	1.88	1.96	1.92	1.96	1.95	1.97	1.86	1.88	1.98	1.96	2.04	1.97	1.99	1.91	1.95
175	1.98	2.05	1.96	2.00	1.96	1.97	1.96	1.97	1.96	1.97	1.87	1.89	2.00	2.03	2.08	1.99	2.00	1.96	1.98
180	2.01	2.06	2.06	2.05	1.98	1.98	1.97	1.98	1.97	1.98	1.90	1.90	2.01	2.10	2.08	2.00	2.00	1.97	1.98

C Range: 0 - 360DEG
C Interval: 15.0DEG
Test Speed: HIGH
Temperature:24.7DEG
Operators:Hu Cong
Test Date:2021-06-08

γ Range: 0 - 180DEG
γ Interval: 1.0DEG
Test System:EVERFINE GO-2000A_V1 SYSTEM V2.0.291
Humidity:54.2%
Test Distance:10.149m [K=1.0000]
Remarks: standard: GB/T 9468-2008

Checker: Hucong

Assessor: Chunbo Zhou

LUMINOUS DISTRIBUTION INTENSITY DATA

Table--2

UNIT: cd

C (DEG) γ (DEG)	285	300	315	330	345													
0	466	466	466	466	465													
5	464	464	464	464	464													
10	458	458	458	459	459													
15	449	449	449	450	450													
20	436	437	437	438	438													
25	420	421	421	422	422													
30	401	401	402	402	403													
35	379	378	380	379	381													
40	353	352	354	353	355													
45	324	324	325	325	326													
50	293	292	293	293	294													
55	258	258	258	258	259													
60	221	221	221	221	221													
65	181	181	180	181	180													
70	139	140	139	139	138													
75	98.0	98.3	97.2	97.7	96.7													
80	57.8	58.2	57.4	58.0	57.1													
85	24.0	24.5	24.5	25.2	24.9													
90	3.59	4.71	5.30	6.15	6.40													
95	0.28	0.81	0.26	0.35	0.43													
100	0.23	0.30	0.24	0.26	0.22													
105	0.29	0.38	0.34	0.36	0.29													
110	0.40	0.44	0.47	0.48	0.48													
115	0.56	0.59	0.55	0.59	0.56													
120	0.71	0.75	0.69	0.74	0.69													
125	0.90	0.93	0.88	0.92	0.87													
130	1.02	1.08	1.01	1.07	1.00													
135	1.19	1.20	1.15	1.20	1.13													
140	1.32	1.33	1.26	1.31	1.23													
145	1.43	1.45	1.36	1.42	1.34													
150	1.53	1.55	1.47	1.51	1.45													
155	1.63	1.65	1.55	1.61	1.55													
160	1.72	1.74	1.65	1.70	1.65													
165	1.79	1.82	1.78	1.80	1.74													
170	1.87	1.91	1.84	1.86	1.80													
175	1.92	1.96	1.88	1.93	1.86													
180	1.97	1.97	1.97	1.96	1.88													

C Range: 0 - 360DEG
 C Interval: 15.0DEG
 Test Speed: HIGH
 Temperature:24.7DEG
 Operators:Hu Cong
 Test Date:2021-06-08

Checker: Hucong

γ Range: 0 - 180DEG
 γ Interval: 1.0DEG
 Test System:EVERFINE GO-2000A_V1 SYSTEM V2.0.291
 Humidity:54.2%
 Test Distance:10.149m [K=1.0000]
 Remarks: standard: GB/T 9468-2008

Assessor: Chunbo Zhou