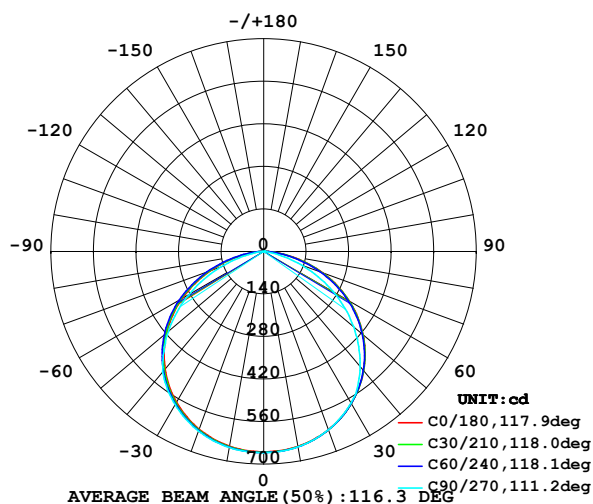


## LUMINAIRE PHOTOMETRIC TEST REPORT

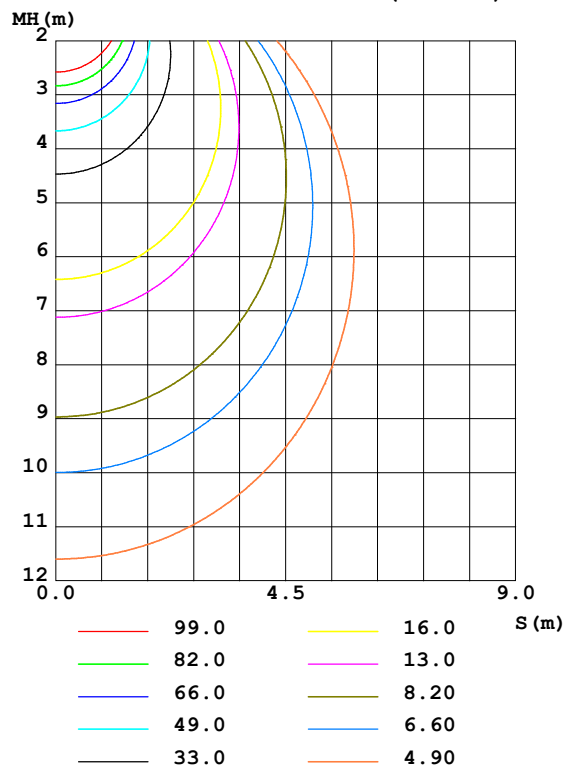
Test:U:24.00V I:1.088A P:26.12W PF:1.000 Lamp Flux:1993.02x1 lm		
NAME: LED Soft light bar	SUR.:0.12m*1m	SERIAL No.:

DATA OF LAMP		PHOTOMETRIC DATA Eff: 76.31 lm/W			
MODEL	EKF42126PRO	Imax(cd)	663.5	S/MH(C0/180)	1.29
NOMINAL POWER(W)		LOR(%)	100.0	S/MH(C90/270)	1.31
RATED VOLTAGE(V)	24	TOTAL FLUX(lm)	1993.0	$\eta$ UP,DN(C0-180)	0.3,49.2
NOMINAL FLUX(lm)	1993.02	CIE CLASS	DIRECT	$\eta$ UP,DN(C180-360)	0.3,50.3
LAMPS INSIDE	1	$\eta$ up(%)	0.5	CIBSE SHR NOM	1.50
TEST VOLTAGE(V)	24	$\eta$ down(%)	99.5	CIBSE SHR MAX	1.50

LUMINOUS INTENSITY DISTRIBUTION DIAGRAM



C0 PLANE ISOLUX DIAGRAM (UNIT:lx)



C Range: 0 - 360DEG  
 C Interval: 15.0DEG  
 Test Speed: HIGH  
 Temperature: 24.2DEG  
 Operators: Congren Xie  
 Test Date: 2021-05-18

Checker: Congren Xie

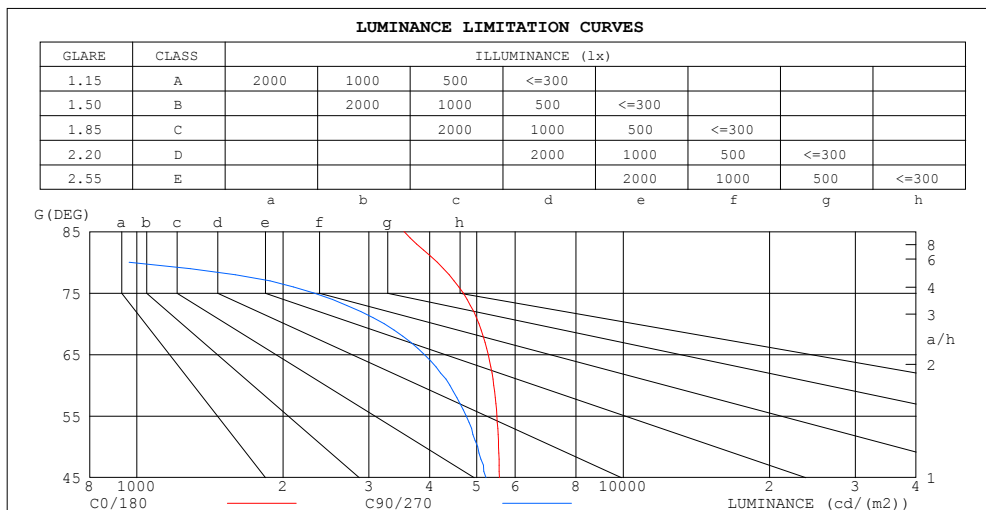
$\gamma$  Range: 0 - 180DEG  
 $\gamma$  Interval: 1.0DEG  
 Test System: EVERFINE GO-2000A\_V1 SYSTEM V2.0.291  
 Humidity: 48.3%  
 Test Distance: 10.149m [K=1.0000]  
 Remarks: standard: GB/T 9468-2008

Assessor: Chunbo Zhou

## ZONAL FLUX DIAGRAM AND LUMINANCE LIMITATION CURVES

ZONAL FLUX DIAGRAM:

$\gamma$	C0	C45	C90	C135	C180	C225	C270	C315	$\gamma$	$\Phi$ zone	$\Phi$ total	%lum, lamp
10	651.3	652.6	652.9	653.5	650.5	653.1	655.0	656.1	0- 10	62.80	62.80	3.15,3.15
20	624.0	625.0	624.1	624.3	622.3	625.4	628.7	629.9	10- 20	181.4	244.2	12.3,12.3
30	577.4	577.9	575.6	575.0	573.5	578.0	582.9	584.4	20- 30	278.8	523.0	26.2,26.2
40	512.1	511.5	494.2	505.6	505.3	510.7	517.6	519.7	30- 40	342.4	865.3	43.4,43.4
50	427.6	425.9	387.6	416.1	417.1	423.7	408.6	435.8	40- 50	361.7	1227	61.6,61.6
60	325.2	321.9	264.2	307.7	310.0	317.5	284.4	333.0	50- 60	330.6	1558	78.2,78.2
70	207.4	202.0	132.3	183.8	187.1	196.0	150.1	214.3	60- 70	252.1	1810	90.8,90.8
80	86.44	80.75	20.11	63.65	67.35	74.20	29.14	90.85	70- 80	138.8	1948	97.8,97.8
90	7.961	6.410	0.2392	2.979	3.075	4.727	0.3171	7.815	80- 90	33.59	1982	99.5,99.5
100	0.6073	1.148	0.7457	1.167	0.5693	1.037	0.7988	1.009	90-100	1.804	1984	99.5,99.5
110	0.9507	1.483	0.8939	1.564	0.9377	1.386	0.8227	1.276	100-110	1.193	1985	99.6,99.6
120	1.357	1.391	1.352	1.922	1.349	1.745	1.244	1.310	110-120	1.369	1986	99.7,99.7
130	1.745	1.707	1.721	2.233	1.726	2.060	1.626	1.520	120-130	1.498	1988	99.7,99.7
140	2.089	2.032	2.102	2.414	2.003	2.252	1.966	1.883	130-140	1.517	1989	99.8,99.8
150	2.343	2.368	2.500	2.544	2.228	2.300	2.434	2.199	140-150	1.418	1991	99.9,99.9
160	2.572	2.740	2.629	2.615	2.448	2.438	2.611	2.596	150-160	1.145	1992	99.9,99.9
170	2.739	2.806	2.720	2.735	2.639	2.606	2.720	2.687	160-170	0.7461	1993	100,100
180	2.768	2.811	2.811	2.797	2.759	2.797	2.811	2.773	170-180	0.2614	1993	100,100
DEG	LUMINOUS INTENSITY:cd									UNIT:lm		



LUMINANCE cd/(m2)		
G (DEG)	C0/180	C90/270
85	3547	106
80	4148	965
75	4690	2312
70	5053	3224
65	5281	3901
60	5419	4404
55	5502	4754
50	5544	5025
45	5565	5227

C Range: 0 - 360DEG  
 C Interval: 15.0DEG  
 Test Speed: HIGH  
 Temperature: 24.2DEG  
 Operators: Congren Xie  
 Test Date: 2021-05-18

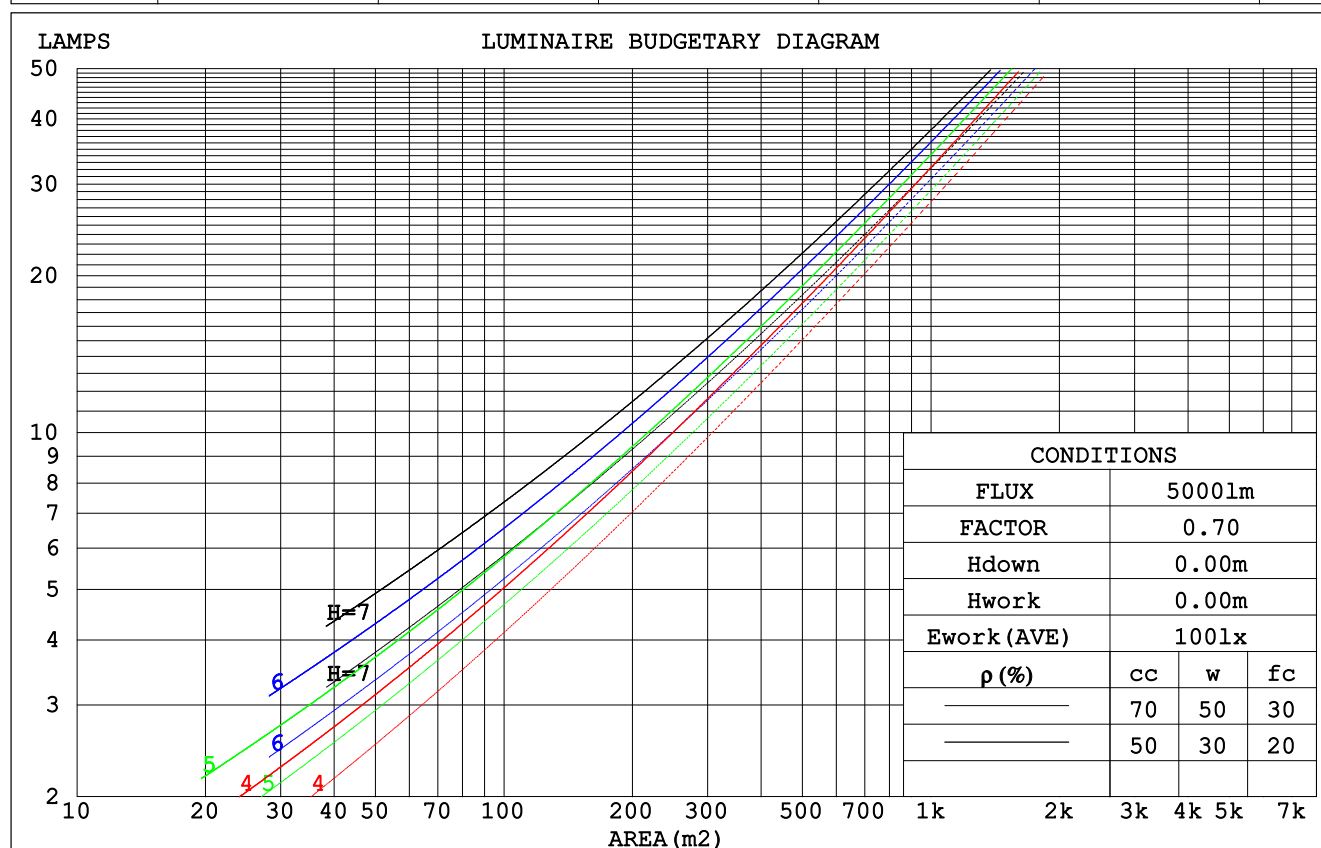
$\gamma$  Range: 0 - 180DEG  
 $\gamma$  Interval: 1.0DEG  
 Test System: EVERFINE GO-2000A\_V1 SYSTEM V2.0.291  
 Humidity: 48.3%  
 Test Distance: 10.149m [K=1.0000]  
 Remarks: standard: GB/T 9468-2008

Checker: Congren Xie

Assessor: Chunbo Zhou

## CU AND LUMINAIRE BUDGETARY ESTIMATE DIAGRAM

pcc	80%			70%			50%			30%			10%			0
pw	50%	30%	10%	50%	30%	10%	50%	30%	10%	50%	30%	10%	50%	30%	10%	0
pfc	20%			20%			20%			20%			20%			0
RCR	RCR:Room Cavity Ratio						Coefficients of Utilization(CU)									
0.0	1.19	1.19	1.19	1.16	1.16	1.16	1.11	1.11	1.11	1.06	1.06	1.06	1.02	1.02	1.02	.99
1.0	1.04	.99	.96	1.01	.98	.94	.97	.94	.91	.93	.90	.88	.89	.87	.85	.83
2.0	.90	.83	.78	.88	.82	.77	.85	.79	.75	.81	.77	.73	.78	.74	.71	.69
3.0	.79	.71	.64	.77	.70	.64	.74	.68	.62	.71	.66	.61	.69	.64	.60	.58
4.0	.70	.61	.54	.68	.60	.54	.66	.59	.53	.63	.57	.52	.61	.56	.51	.49
5.0	.62	.53	.46	.61	.53	.46	.59	.51	.46	.57	.50	.45	.55	.49	.45	.42
6.0	.56	.47	.40	.55	.46	.40	.53	.45	.40	.51	.45	.39	.50	.44	.39	.37
7.0	.51	.42	.36	.50	.41	.35	.48	.41	.35	.47	.40	.35	.45	.39	.35	.33
8.0	.46	.38	.32	.45	.37	.32	.44	.37	.31	.43	.36	.31	.42	.35	.31	.29
9.0	.42	.34	.28	.42	.34	.28	.40	.33	.28	.39	.33	.28	.38	.32	.28	.26
10.0	.39	.31	.26	.38	.31	.26	.37	.30	.25	.36	.30	.25	.36	.30	.25	.23



C Range: 0 - 360DEG  
 C Interval: 15.0DEG  
 Test Speed: HIGH  
 Temperature: 24.2DEG  
 Operators: Congren Xie  
 Test Date: 2021-05-18

γ Range: 0 - 180DEG  
 γ Interval: 1.0DEG  
 Test System: EVERFINE GO-2000A\_V1 SYSTEM V2.0.291  
 Humidity: 48.3%  
 Test Distance: 10.149m [K=1.0000]  
 Remarks: standard: GB/T 9468-2008

Checker: Congren Xie

Assessor: Chunbo Zhou

## WEC AND CCEC

pcc	80%			70%			50%			30%			10%			0
pw	50%	30%	10%	50%	30%	10%	50%	30%	10%	50%	30%	10%	50%	30%	10%	0
pfc	20%			20%			20%			20%			20%			0
RCR	RCR:Room Cavity Ratio						Wall Exitance Coefficients (WEC)									
0.0																
1.0	.310	.176	.056	.302	.172	.055	.289	.166	.053	.276	.159	.051	.265	.154	.049	
2.0	.293	.160	.049	.286	.158	.049	.274	.152	.047	.263	.148	.046	.253	.143	.045	
3.0	.271	.144	.043	.266	.142	.043	.255	.138	.042	.245	.134	.041	.236	.131	.040	
4.0	.250	.130	.038	.245	.128	.038	.236	.125	.037	.227	.122	.037	.219	.119	.036	
5.0	.232	.118	.034	.227	.117	.034	.219	.114	.034	.211	.111	.033	.204	.109	.033	
6.0	.215	.108	.031	.211	.106	.031	.203	.104	.030	.196	.102	.030	.190	.100	.030	
7.0	.200	.099	.028	.196	.098	.028	.190	.096	.028	.183	.094	.027	.177	.092	.027	
8.0	.187	.091	.026	.183	.090	.026	.177	.089	.025	.172	.087	.025	.167	.085	.025	
9.0	.175	.085	.024	.172	.084	.024	.167	.082	.023	.162	.081	.023	.157	.080	.023	
10.0	.164	.079	.022	.162	.078	.022	.157	.077	.022	.152	.076	.022	.148	.074	.021	

pcc	80%			70%			50%			30%			10%			0
pw	50%	30%	10%	50%	30%	10%	50%	30%	10%	50%	30%	10%	50%	30%	10%	0
pfc	20%			20%			20%			20%			20%			0
RCR	RCR:Room Cavity Ratio						Ceiling Cavity Exitance Coefficients (CCEC)									
0.0	.195	.195	.195	.166	.166	.166	.114	.114	.114	.065	.065	.065	.021	.021	.021	
1.0	.185	.160	.139	.158	.138	.119	.108	.095	.082	.062	.055	.048	.020	.018	.016	
2.0	.177	.136	.102	.151	.117	.088	.104	.081	.062	.060	.047	.036	.019	.015	.012	
3.0	.169	.119	.078	.145	.102	.068	.099	.071	.048	.057	.042	.028	.018	.013	.009	
4.0	.161	.105	.062	.139	.091	.054	.095	.063	.038	.055	.037	.023	.018	.012	.007	
5.0	.154	.095	.051	.132	.082	.045	.091	.057	.032	.053	.034	.019	.017	.011	.006	
6.0	.147	.087	.043	.126	.075	.038	.087	.052	.027	.051	.031	.016	.016	.010	.005	
7.0	.140	.080	.037	.121	.069	.033	.083	.048	.023	.048	.029	.014	.016	.009	.005	
8.0	.134	.074	.033	.115	.064	.029	.080	.045	.020	.046	.027	.012	.015	.009	.004	
9.0	.128	.069	.029	.110	.060	.026	.076	.042	.018	.044	.025	.011	.014	.008	.004	
10.0	.122	.065	.027	.105	.056	.023	.073	.040	.017	.043	.023	.010	.014	.008	.003	

C Range: 0 - 360DEG  
 C Interval: 15.0DEG  
 Test Speed: HIGH  
 Temperature:24.2DEG  
 Operators:Congren Xie  
 Test Date:2021-05-18

Checker: Congren Xie

γ Range: 0 - 180DEG  
 γ Interval: 1.0DEG  
 Test System:EVERFINE GO-2000A\_V1 SYSTEM V2.0.291  
 Humidity:48.3%  
 Test Distance:10.149m [K=1.0000]  
 Remarks: standard: GB/T 9468-2008

Assessor: Chunbo Zhou

UGR(Unified Glare Rating) Table

ceiling/cavity	0.7	0.7	0.5	0.5	0.3	0.7	0.7	0.5	0.5	0.3
walls	0.5	0.3	0.5	0.3	0.3	0.5	0.3	0.5	0.3	0.3
working plane	0.2	0.2	0.2	0.2	0.2	0.2	0.2	0.2	0.2	0.2
Room dimensions	Viewed crosswise					Viewed endwise				
x = 2H y = 2H	18.9	20.5	19.2	20.7	20.9	18.4	20.0	18.7	20.2	20.4
3H	20.5	22.0	20.8	22.2	22.4	19.8	21.2	20.1	21.5	21.7
4H	21.2	22.5	21.5	22.8	23.0	20.2	21.6	20.6	21.8	22.1
6H	21.6	22.9	22.0	23.2	23.5	20.4	21.6	20.7	21.9	22.2
8H	21.7	23.0	22.1	23.3	23.6	20.4	21.6	20.7	21.9	22.2
12H	21.8	23.0	22.2	23.3	23.6	20.3	21.5	20.7	21.8	22.1
4H 2H	19.6	20.9	19.9	21.2	21.4	19.2	20.5	19.5	20.8	21.1
3H	21.3	22.5	21.7	22.8	23.1	20.8	22.0	21.2	22.3	22.6
4H	22.1	23.2	22.5	23.5	23.8	21.4	22.5	21.8	22.8	23.1
6H	22.7	23.6	23.1	24.0	24.3	21.7	22.7	22.1	23.0	23.4
8H	22.8	23.7	23.3	24.1	24.5	21.8	22.6	22.2	23.0	23.4
12H	23.0	23.8	23.4	24.2	24.6	21.7	22.5	22.2	22.9	23.4
8H 4H	22.3	23.2	22.8	23.6	24.0	21.7	22.6	22.1	23.0	23.4
6H	23.0	23.8	23.5	24.2	24.6	22.2	22.9	22.7	23.4	23.8
8H	23.3	24.0	23.8	24.4	24.9	22.3	23.0	22.8	23.4	23.9
12H	23.5	24.1	24.0	24.5	25.0	22.4	23.0	22.9	23.4	23.9
12H 4H	22.3	23.2	22.8	23.6	24.0	21.7	22.6	22.2	23.0	23.4
6H	23.1	23.7	23.6	24.2	24.6	22.3	22.9	22.8	23.4	23.8
8H	23.4	23.9	23.9	24.4	24.9	22.5	23.0	22.9	23.5	24.0
Variations with the observer position at spacings:										
S = 1.0H	+ 0.1 / - 0.2					+ 0.1 / - 0.2				
1.5H	+ 0.2 / - 0.3					+ 0.4 / - 0.6				
2.0H	+ 0.2 / - 0.3					+ 0.4 / - 0.7				

CIE Pub.117 Corrected 1993 lm Total Lamp Luminous Flux.(8log(F/F0) = 2.4)

C Range: 0 - 360DEG  
 C Interval: 15.0DEG  
 Test Speed: HIGH  
 Temperature:24.2DEG  
 Operators:Congren Xie  
 Test Date:2021-05-18

Checker: Congren Xie

γ Range: 0 - 180DEG  
 γ Interval: 1.0DEG  
 Test System:EVERFINE GO-2000A\_V1 SYSTEM V2.0.291  
 Humidity:48.3%  
 Test Distance:10.149m [K=1.0000]  
 Remarks: standard: GB/T 9468-2008

Assessor: Chunbo Zhou

## UTILIZATION FACTORS TABLE

REFLECTANCE										
Ceiling	0.8	0.8	0.8	0.7	0.7	0.7	0.5	0.5	0.5	0
Walls	0.7	0.5	0.3	0.7	0.5	0.3	0.7	0.5	0.3	0
Working plane	0.2	0.2	0.2	0.2	0.2	0.2	0.2	0.2	0.2	0
ROOM INDEX	UTILIZATION FACTORS (PERCENT) $k(RI) \times RCR = 5$									
$k = 0.60$	57	45	38	56	45	38	55	44	38	31
0.80	67	55	48	66	55	47	64	54	47	40
1.00	75	64	57	74	64	56	72	65	56	49
1.25	83	72	65	81	71	64	78	70	63	56
1.50	88	78	71	86	77	70	83	75	69	61
2.00	95	86	79	93	85	79	89	82	77	69
2.50	99	91	85	96	89	84	93	87	82	73
3.00	102	95	89	100	93	88	96	90	86	78
4.00	106	100	96	104	98	94	99	95	91	82
5.00	108	104	100	106	102	98	101	98	95	85
ROOM INDEX	UF (total)									Direct
According to DIN EN 13032-2 2004			Suspended					SHRNOM = 1.25		

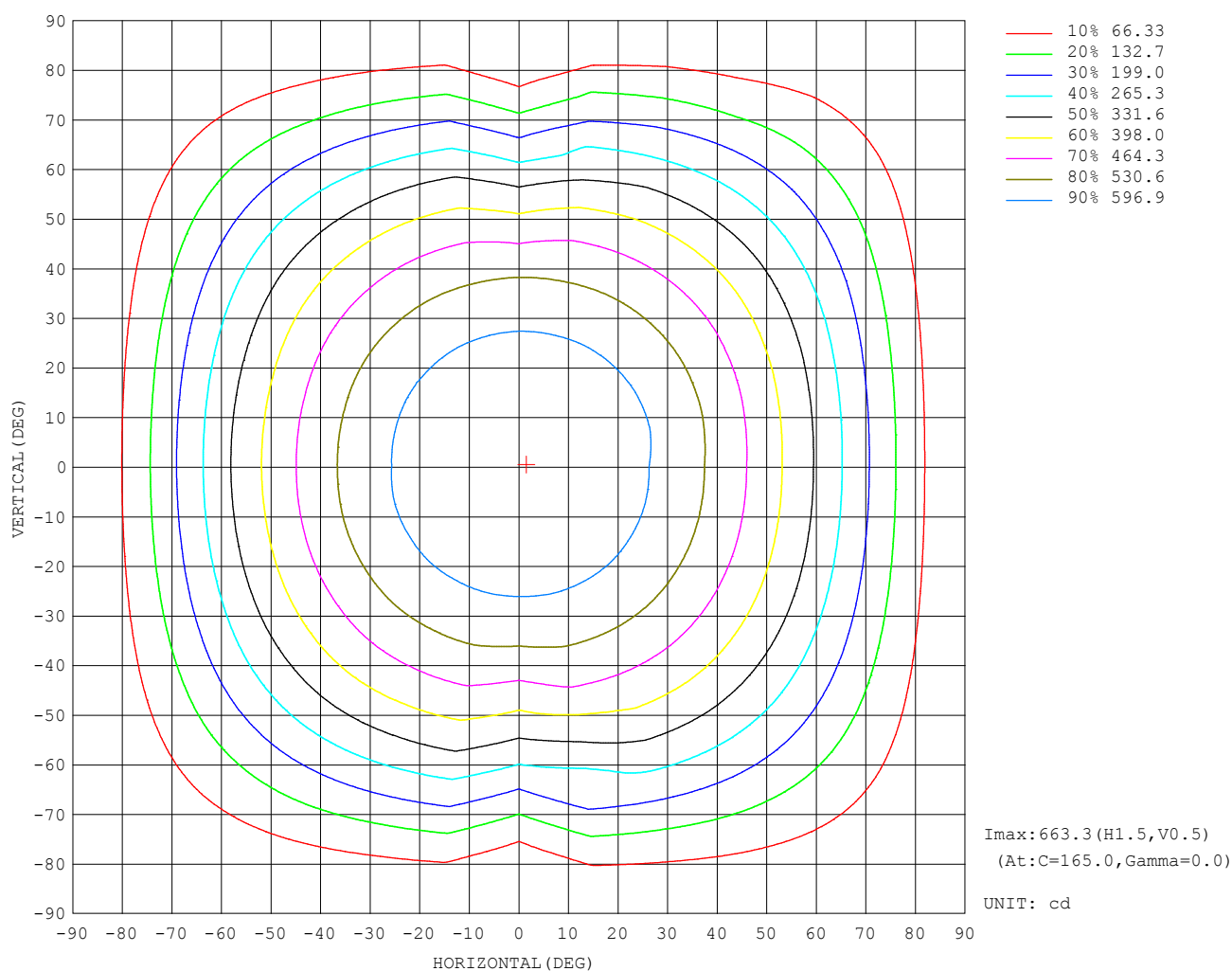
C Range: 0 - 360DEG  
 C Interval: 15.0DEG  
 Test Speed: HIGH  
 Temperature: 24.2DEG  
 Operators: Congren Xie  
 Test Date: 2021-05-18

Checker: Congren Xie

$\gamma$  Range: 0 - 180DEG  
 $\gamma$  Interval: 1.0DEG  
 Test System: EVERFINE GO-2000A\_V1 SYSTEM V2.0.291  
 Humidity: 48.3%  
 Test Distance: 10.149m [K=1.0000]  
 Remarks: standard: GB/T 9468-2008

Assessor: Chunbo Zhou

## ISOCANDELA DIAGRAM



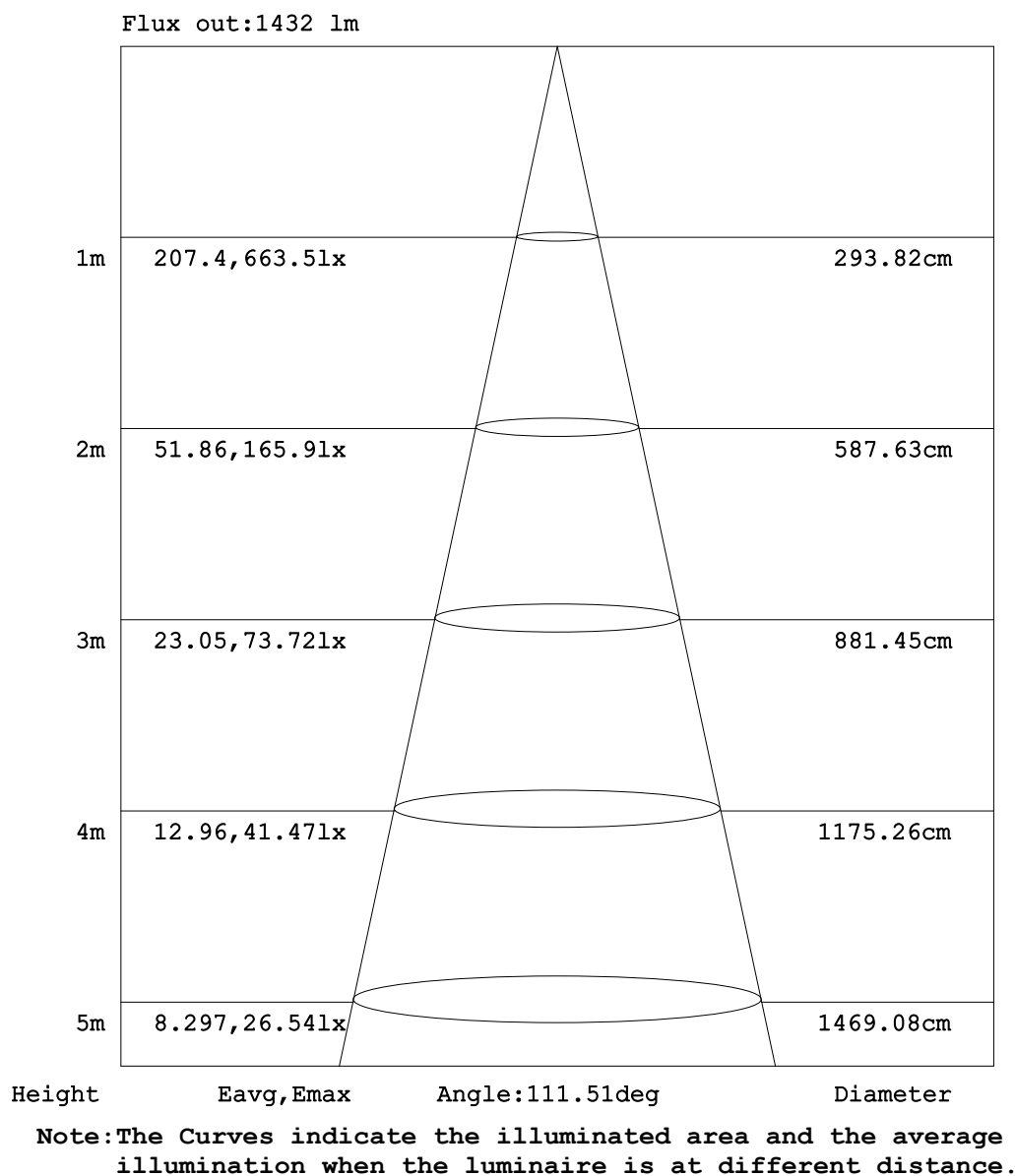
C Range: 0 - 360DEG  
C Interval: 15.0DEG  
Test Speed: HIGH  
Temperature: 24.2DEG  
Operators: Congren Xie  
Test Date: 2021-05-18

Checker: Congren Xie

$\gamma$  Range: 0 - 180DEG  
 $\gamma$  Interval: 1.0DEG  
Test System: EVERFINE GO-2000A\_V1 SYSTEM V2.0.291  
Humidity: 48.3%  
Test Distance: 10.149m [K=1.0000]  
Remarks: standard: GB/T 9468-2008

Assessor: Chunbo Zhou

## AAI Figure



C Range: 0 - 360DEG  
C Interval: 15.0DEG  
Test Speed: HIGH  
Temperature:24.2DEG  
Operators:Congren Xie  
Test Date:2021-05-18

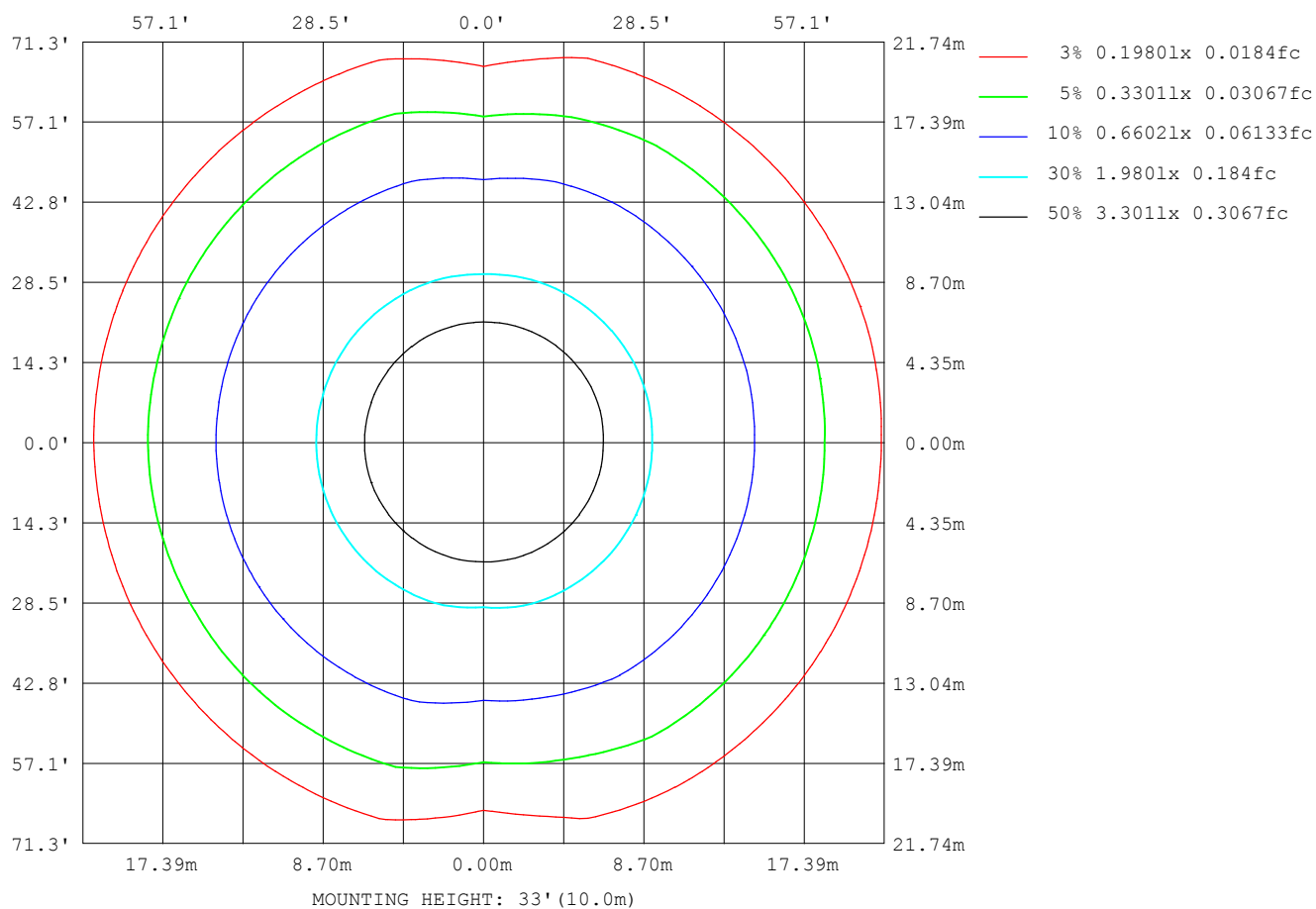
Checker: Congren Xie

$\gamma$  Range: 0 - 180DEG  
 $\gamma$  Interval: 1.0DEG  
Test System:EVERFINE GO-2000A\_V1 SYSTEM V2.0.291  
Humidity:48.3%  
Test Distance:10.149m [K=1.0000]  
Remarks: standard: GB/T 9468-2008

Assessor: Chunbo Zhou



## ISOLUX DIAGRAM



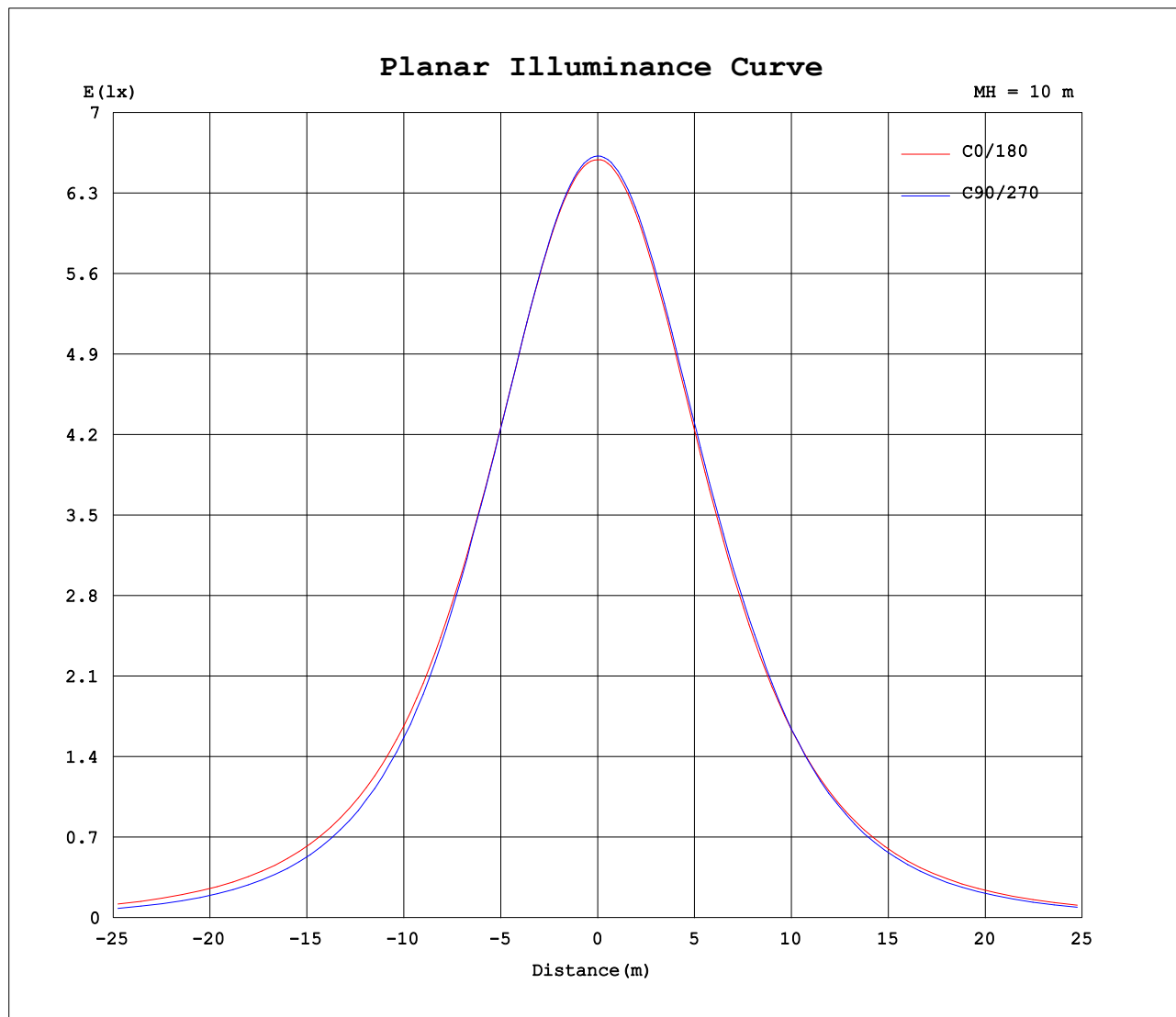
C Range: 0 - 360DEG  
C Interval: 15.0DEG  
Test Speed: HIGH  
Temperature: 24.2DEG  
Operators: Congren Xie  
Test Date: 2021-05-18

Checker: Congren Xie

$\gamma$  Range: 0 - 180DEG  
 $\gamma$  Interval: 1.0DEG  
Test System: EVERFINE GO-2000A\_V1 SYSTEM V2.0.291  
Humidity: 48.3%  
Test Distance: 10.149m [K=1.0000]  
Remarks: standard: GB/T 9468-2008

Assessor: Chunbo Zhou

## Planar Illuminance Curve



C Range: 0 - 360DEG  
C Interval: 15.0DEG  
Test Speed: HIGH  
Temperature: 24.2DEG  
Operators: Congren Xie  
Test Date: 2021-05-18

Checker: Congren Xie

$\gamma$  Range: 0 - 180DEG  
 $\gamma$  Interval: 1.0DEG  
Test System: EVERFINE GO-2000A\_V1 SYSTEM V2.0.291  
Humidity: 48.3%  
Test Distance: 10.149m [K=1.0000]  
Remarks: standard: GB/T 9468-2008

Assessor: Chunbo Zhou

## LUMINOUS DISTRIBUTION INTENSITY DATA

Table--1

UNIT: cd

C (DEG) γ (DEG)	0	15	30	45	60	75	90	105	120	135	150	165	180	195	210	225	240	255	270
0	659	660	661	661	662	662	662	663	663	663	663	663	659	660	661	661	662	662	662
5	658	658	659	659	660	660	660	660	660	661	661	661	657	658	659	659	660	661	661
10	651	652	652	653	653	653	653	653	653	654	654	654	651	652	652	653	654	655	655
15	640	641	641	641	641	641	641	641	641	641	641	642	639	640	641	642	643	644	644
20	624	625	625	625	625	625	624	624	624	624	624	624	622	623	625	625	627	628	629
25	603	604	604	604	603	603	602	602	602	602	602	602	600	602	603	604	606	607	608
30	577	578	578	578	577	577	576	576	575	575	574	575	574	575	577	578	580	581	583
35	547	548	547	547	546	546	540	544	543	543	542	543	542	543	545	547	549	551	553
40	512	513	512	511	510	510	494	507	506	506	505	505	505	507	509	511	514	515	518
45	472	472	472	471	469	468	444	465	463	463	462	463	464	465	468	470	473	475	464
50	428	428	427	426	424	411	388	418	416	416	415	416	417	418	422	424	427	429	409
55	379	379	377	376	374	347	327	367	365	364	363	364	366	367	371	373	377	379	349
60	325	325	323	322	319	288	264	311	308	308	306	307	310	311	315	318	322	324	284
65	268	267	266	263	260	254	198	250	248	247	246	246	249	252	255	258	262	265	217
70	207	206	205	202	199	195	132	188	185	184	183	184	187	189	193	196	200	204	150
75	146	145	142	140	136	132	71.8	125	122	121	120	121	125	126	130	133	137	140	85.9
80	86.4	85.6	83.3	80.8	76.8	73.3	20.1	66.9	64.5	63.6	62.7	63.6	67.4	68.8	71.9	74.2	78.0	80.6	29.1
85	37.1	36.4	34.8	32.8	29.9	27.2	1.11	22.9	21.8	21.3	20.8	21.2	23.1	24.6	26.8	28.3	30.6	32.2	1.40
90	7.96	7.83	7.21	6.41	5.24	3.86	0.24	2.60	2.96	2.98	2.89	2.85	3.08	3.65	4.31	4.73	5.24	4.72	0.32
95	1.39	1.59	1.54	1.25	1.22	1.22	0.45	1.24	1.16	1.03	0.94	0.83	0.73	0.87	0.94	1.00	1.13	1.19	0.37
100	0.61	0.77	0.96	1.15	1.27	1.31	0.75	1.38	1.30	1.17	0.93	0.79	0.57	0.67	0.91	1.04	1.21	1.27	0.80
105	0.74	0.91	1.10	1.32	1.42	1.43	0.77	1.55	1.48	1.37	1.12	0.98	0.75	0.84	1.07	1.20	1.37	1.37	0.75
110	0.95	1.11	1.27	1.48	1.47	1.45	0.89	1.72	1.64	1.56	1.34	1.17	0.94	1.00	1.25	1.39	1.54	1.49	0.82
115	1.15	1.31	1.47	1.49	1.35	1.18	1.12	1.80	1.82	1.75	1.52	1.38	1.15	1.21	1.44	1.57	1.72	1.51	1.03
120	1.36	1.51	1.63	1.39	1.31	1.37	1.35	1.91	1.99	1.92	1.72	1.57	1.35	1.41	1.63	1.74	1.89	1.54	1.24
125	1.56	1.68	1.72	1.51	1.50	1.57	1.55	2.01	2.14	2.08	1.88	1.75	1.53	1.58	1.79	1.91	2.03	1.67	1.44
130	1.74	1.87	1.75	1.71	1.69	1.76	1.72	2.11	2.24	2.23	2.03	1.91	1.73	1.75	1.95	2.06	2.09	1.81	1.63
135	1.93	2.04	1.80	1.87	1.86	1.92	1.88	2.21	2.29	2.34	2.14	2.05	1.87	1.90	2.10	2.18	2.13	1.94	1.79
140	2.09	2.17	1.96	2.03	2.01	2.11	2.10	2.29	2.35	2.41	2.28	2.19	2.00	2.04	2.22	2.25	2.18	2.05	1.97
145	2.22	2.26	2.12	2.17	2.37	2.61	2.37	2.39	2.42	2.48	2.38	2.31	2.12	2.17	2.29	2.27	2.26	2.17	2.31
150	2.34	2.30	2.27	2.37	2.64	2.66	2.50	2.48	2.49	2.54	2.46	2.41	2.23	2.25	2.34	2.30	2.33	2.29	2.43
155	2.47	2.42	2.38	2.68	2.65	2.70	2.57	2.56	2.51	2.58	2.50	2.50	2.31	2.31	2.39	2.36	2.43	2.41	2.54
160	2.57	2.53	2.58	2.74	2.72	2.73	2.63	2.63	2.58	2.62	2.55	2.55	2.45	2.39	2.47	2.44	2.52	2.52	2.61
165	2.66	2.64	2.70	2.77	2.73	2.76	2.67	2.69	2.64	2.67	2.59	2.62	2.56	2.50	2.55	2.53	2.62	2.60	2.68
170	2.74	2.78	2.74	2.81	2.76	2.79	2.72	2.76	2.71	2.73	2.66	2.68	2.64	2.58	2.64	2.61	2.68	2.66	2.72
175	2.76	2.81	2.79	2.81	2.81	2.81	2.80	2.81	2.77	2.80	2.72	2.76	2.73	2.68	2.74	2.69	2.75	2.71	2.75
180	2.77	2.80	2.81	2.81	2.81	2.81	2.81	2.81	2.81	2.80	2.76	2.80	2.76	2.81	2.81	2.80	2.82	2.80	2.81

C Range: 0 - 360DEG  
C Interval: 15.0DEG  
Test Speed: HIGH  
Temperature:24.2DEG  
Operators:Congren Xie  
Test Date:2021-05-18

γ Range: 0 - 180DEG  
γ Interval: 1.0DEG  
Test System:EVERFINE GO-2000A\_V1 SYSTEM V2.0.291  
Humidity:48.3%  
Test Distance:10.149m [K=1.0000]  
Remarks: standard: GB/T 9468-2008

Checker: Congren Xie

Assessor: Chunbo Zhou

## LUMINOUS DISTRIBUTION INTENSITY DATA

Table--2

UNIT: cd

C (DEG) γ (DEG)	285	300	315	330	345													
0	663	663	663	663	663													
5	661	661	662	662	662													
10	655	656	656	656	656													
15	645	645	645	645	645													
20	629	630	630	630	629													
25	609	610	610	610	609													
30	583	584	584	585	583													
35	553	554	555	555	553													
40	518	520	520	520	518													
45	478	480	480	480	478													
50	434	435	436	436	434													
55	377	386	387	387	385													
60	318	332	333	334	332													
65	269	274	275	275	274													
70	203	213	214	215	213													
75	142	148	147	149	151													
80	80.9	88.3	90.8	92.1	90.9													
85	33.2	34.4	38.3	32.4	35.1													
90	3.53	5.82	7.81	9.06	8.16													
95	1.38	1.12	1.62	1.25	1.56													
100	1.25	1.14	1.01	0.87	0.71													
105	1.29	1.30	1.11	0.99	0.76													
110	1.31	1.37	1.28	1.16	0.95													
115	1.04	1.11	1.36	1.33	1.12													
120	1.17	1.20	1.31	1.48	1.34													
125	1.37	1.41	1.35	1.59	1.52													
130	1.56	1.59	1.52	1.69	1.71													
135	1.74	1.76	1.71	1.77	1.87													
140	1.93	1.93	1.88	1.89	2.03													
145	2.41	2.26	2.03	2.06	2.13													
150	2.50	2.56	2.20	2.19	2.22													
155	2.56	2.61	2.52	2.32	2.28													
160	2.59	2.66	2.60	2.50	2.40													
165	2.65	2.70	2.65	2.65	2.52													
170	2.68	2.73	2.69	2.72	2.67													
175	2.72	2.76	2.72	2.76	2.73													
180	2.78	2.81	2.77	2.80	2.79													

C Range: 0 - 360DEG  
 C Interval: 15.0DEG  
 Test Speed: HIGH  
 Temperature:24.2DEG  
 Operators:Congren Xie  
 Test Date:2021-05-18

Checker: Congren Xie

γ Range: 0 - 180DEG  
 γ Interval: 1.0DEG  
 Test System:EVERFINE GO-2000A\_V1 SYSTEM V2.0.291  
 Humidity:48.3%  
 Test Distance:10.149m [K=1.0000]  
 Remarks: standard: GB/T 9468-2008

Assessor: Chunbo Zhou