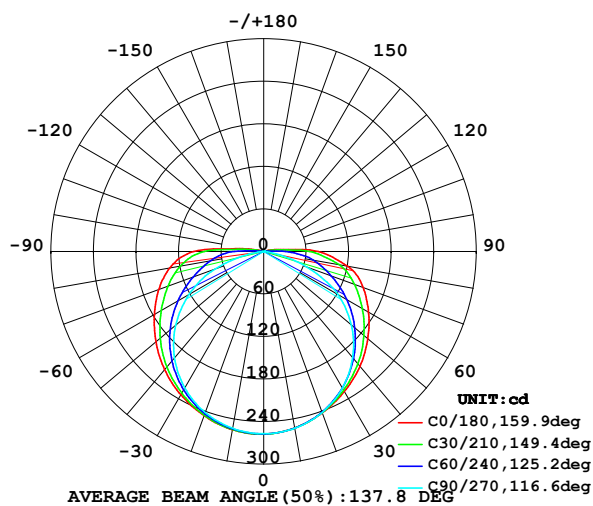


LUMINAIRE PHOTOMETRIC TEST REPORT

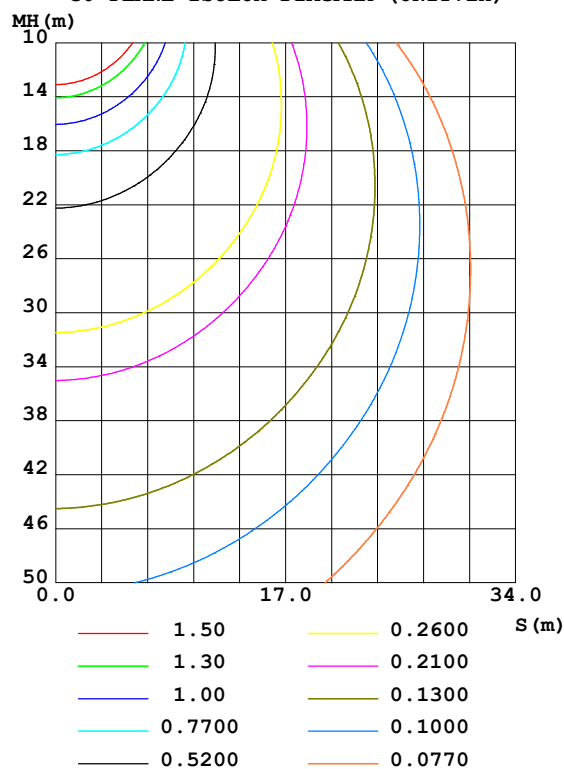
Test:U:24.00V I:0.4219A P:10.13W PF:1.000 Lamp Flux:982.849x1 lm		
NAME: LED Soft light bar	SUR.:0.08m*1m	SERIAL No.:

DATA OF LAMP		PHOTOMETRIC DATA Eff: 97.07 lm/W			
MODEL	EKF5510COB	Imax(cd)	257.7	S/MH(C0/180)	1.36
NOMINAL POWER(W)		LOR(%)	100.0	S/MH(C90/270)	1.29
RATED VOLTAGE(V)	24	TOTAL FLUX(lm)	982.85	η UP,DN(C0-180)	1.7,48.3
NOMINAL FLUX(lm)	982.849	CIE CLASS	DIRECT	η UP,DN(C180-360)	1.6,48.4
LAMPS INSIDE	1	η up(%)	3.3	CIBSE SHR NOM	1.50
TEST VOLTAGE(V)	24	η down(%)	96.7	CIBSE SHR MAX	1.55

LUMINOUS INTENSITY DISTRIBUTION DIAGRAM



C0 PLANE ISOLUX DIAGRAM (UNIT:lx)



C Range: 0 - 360DEG
 C Interval: 15.0DEG
 Test Speed: HIGH
 Temperature: 25.1DEG
 Operators: Congren Xie
 Test Date: 2021-05-18

γ Range: 0 - 180DEG
 γ Interval: 1.0DEG
 Test System: EVERFINE GO-2000A_V1 SYSTEM V2.0.291
 Humidity: 46.5%
 Test Distance: 10.149m [K=1.0000]
 Remarks: standard: GB/T 9468-2008

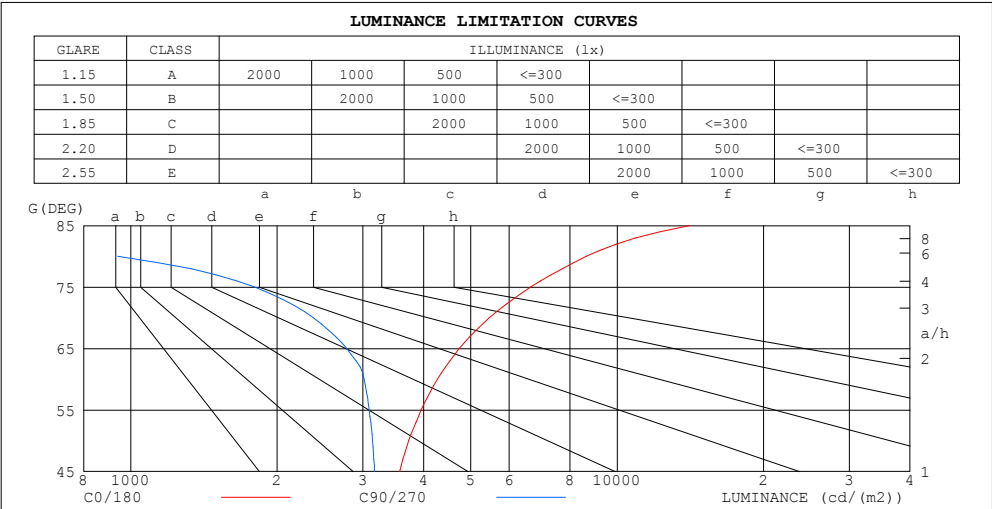
Checker: Yonghao Yuan

Assessor: Chunbo Zhou

ZONAL FLUX DIAGRAM
AND LUMINANCE LIMITATION CURVES

ZONAL FLUX DIAGRAM:

γ	C0	C45	C90	C135	C180	C225	C270	C315	γ	Φ zone	Φ total	%lum, lamp
10	252.8	253.0	253.2	253.5	255.2	254.7	253.3	251.7	0- 10	24.35	24.35	2.48,2.48
20	242.3	241.4	241.6	243.5	246.5	244.6	241.7	240.1	10- 20	70.28	94.63	9.63,9.63
30	228.0	223.9	222.3	227.2	233.6	228.1	222.5	222.6	20- 30	108.4	203.0	20.7,20.7
40	211.5	201.9	195.5	206.1	217.6	207.0	195.9	200.8	30- 40	135.1	338.1	34.4,34.4
50	191.8	176.8	161.5	181.3	198.4	181.9	162.1	176.0	40- 50	148.2	486.3	49.5,49.5
60	170.8	149.0	120.8	153.8	178.1	154.1	121.6	148.5	50- 60	146.9	633.2	64.4,64.4
70	149.4	121.3	64.95	127.2	157.6	127.0	73.32	121.3	60- 70	132.9	766.1	78,78
80	120.0	93.17	13.06	101.4	134.5	100.8	16.62	92.97	70- 80	109.1	875.2	89.1,89.1
90	76.78	50.10	0.2529	65.46	98.43	65.30	0.1731	43.87	80- 90	75.18	950.4	96.7,96.7
100	15.70	3.684	0.2453	6.094	21.77	7.320	0.2544	4.231	90-100	25.51	975.9	99.3,99.3
110	1.299	0.8766	0.4003	0.6546	2.360	0.7431	0.3681	0.8663	100-110	3.272	979.2	99.6,99.6
120	1.023	0.8255	0.5624	0.7141	0.7412	0.6437	0.5357	0.8277	110-120	0.7936	980.0	99.7,99.7
130	1.025	0.8875	0.7031	0.8116	0.8061	0.7573	0.6816	0.8511	120-130	0.7034	980.7	99.8,99.8
140	1.028	0.9792	0.8439	0.9035	0.8711	0.8330	0.8332	0.9096	130-140	0.6706	981.4	99.8,99.8
150	1.060	1.039	0.9304	0.9901	0.9467	0.9195	0.9359	0.9634	140-150	0.5953	982.0	99.9,99.9
160	1.098	1.076	1.006	1.046	1.023	0.9791	1.017	1.012	150-160	0.4699	982.4	100,100
170	1.098	1.107	1.077	1.098	1.088	1.049	1.098	1.082	160-170	0.3037	982.7	100,100
180	1.104	1.104	1.104	1.114	1.104	1.109	1.104	1.109	170-180	0.1065	982.8	100,100
DEG	LUMINOUS INTENSITY:cd									UNIT:lm		



LUMINANCE cd/(m2)		
G (DEG)	C0/180	C90/270
85	14086	36
80	8641	940
75	6641	1798
70	5460	2374
65	4737	2782
60	4271	3019
55	3955	3093
50	3729	3140
45	3569	3171

C Range: 0 - 360DEG
C Interval: 15.0DEG
Test Speed: HIGH
Temperature:25.1DEG
Operators:Congren Xie
Test Date:2021-05-18

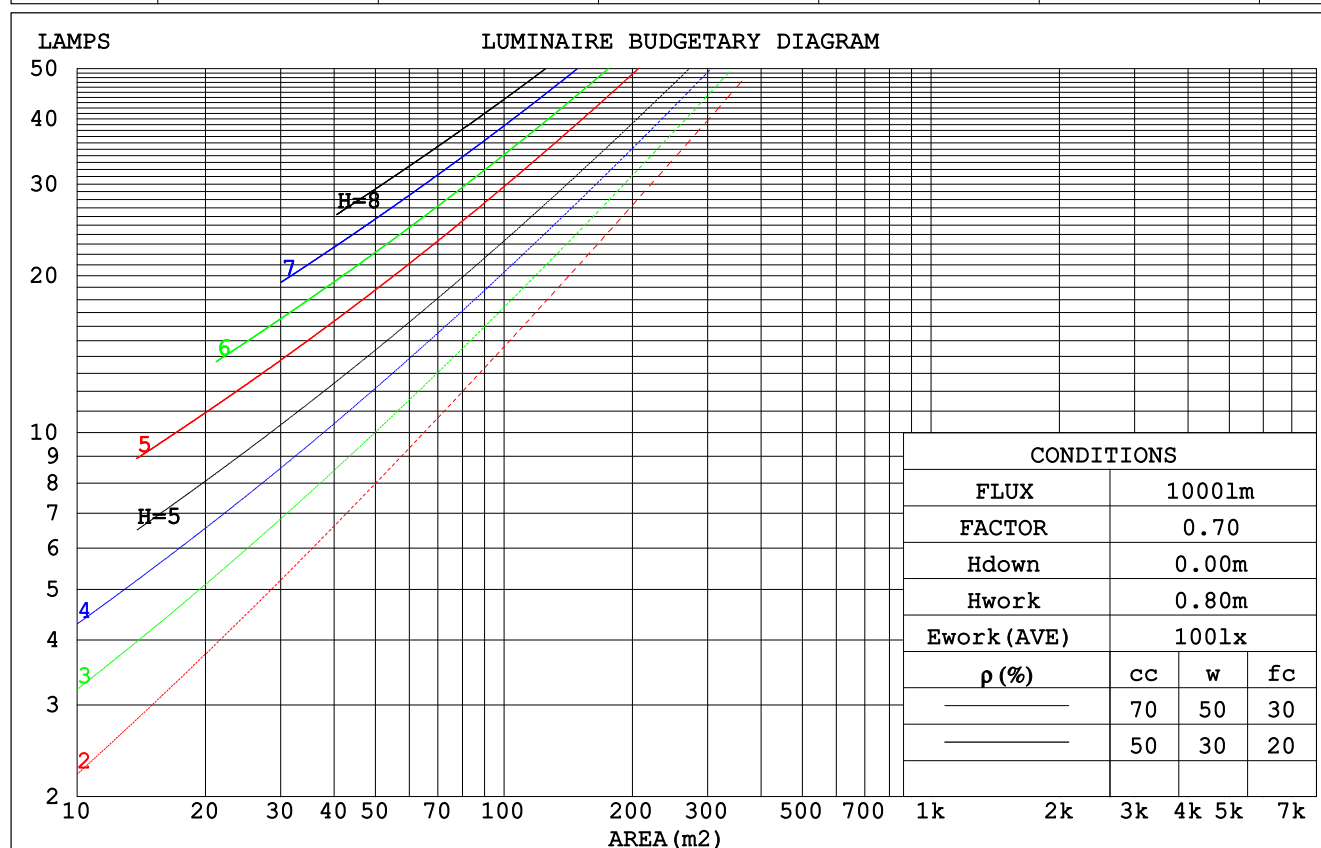
γ Range: 0 - 180DEG
 γ Interval: 1.0DEG
Test System:EVERFINE GO-2000A_V1 SYSTEM V2.0.291
Humidity:46.5%
Test Distance:10.149m [K=1.0000]
Remarks: standard: GB/T 9468-2008

Checker: Yonghao Yuan

Assessor: Chunbo Zhou

CU AND LUMINAIRE BUDGETARY ESTIMATE DIAGRAM

pcc	80%			70%			50%			30%			10%			0
pw	50%	30%	10%	50%	30%	10%	50%	30%	10%	50%	30%	10%	50%	30%	10%	0
pfc	20%			20%			20%			20%			20%			0
RCR	RCR:Room Cavity Ratio						Coefficients of Utilization(CU)									
0.0	1.18	1.18	1.18	1.15	1.15	1.15	1.09	1.09	1.09	1.04	1.04	1.04	.99	.99	.99	.97
1.0	.99	.93	.88	.96	.91	.86	.91	.87	.83	.86	.83	.80	.82	.79	.77	.74
2.0	.84	.76	.69	.82	.74	.68	.78	.71	.66	.74	.68	.64	.70	.66	.62	.59
3.0	.73	.64	.56	.71	.62	.55	.67	.60	.54	.64	.58	.52	.61	.56	.51	.49
4.0	.64	.54	.47	.62	.53	.46	.59	.51	.45	.56	.50	.44	.54	.48	.43	.41
5.0	.57	.47	.40	.55	.46	.39	.53	.45	.39	.50	.43	.38	.48	.42	.37	.35
6.0	.51	.41	.34	.50	.41	.34	.47	.39	.33	.45	.38	.33	.43	.37	.32	.30
7.0	.46	.37	.30	.45	.36	.30	.43	.35	.29	.41	.34	.29	.40	.33	.28	.26
8.0	.42	.33	.27	.41	.32	.26	.39	.32	.26	.38	.31	.26	.36	.30	.25	.23
9.0	.38	.30	.24	.38	.29	.24	.36	.29	.23	.35	.28	.23	.33	.27	.23	.21
10.0	.35	.27	.21	.35	.27	.21	.33	.26	.21	.32	.25	.21	.31	.25	.21	.19



C Range: 0 - 360DEG
 C Interval: 15.0DEG
 Test Speed: HIGH
 Temperature: 25.1DEG
 Operators: Congren Xie
 Test Date: 2021-05-18

γ Range: 0 - 180DEG
 γ Interval: 1.0DEG
 Test System: EVERFINE GO-2000A_V1 SYSTEM V2.0.291
 Humidity: 46.5%
 Test Distance: 10.149m [K=1.0000]
 Remarks: standard: GB/T 9468-2008

Checker: Yonghao Yuan

Assessor: Chunbo Zhou

WEC AND CCEC

pcc	80%			70%			50%			30%			10%			0
pw	50%	30%	10%	50%	30%	10%	50%	30%	10%	50%	30%	10%	50%	30%	10%	0
pfc	20%			20%			20%			20%			20%			0
RCR	RCR:Room Cavity Ratio						Wall Exitance Coefficients (WEC)									
0.0																
1.0	.396	.225	.071	.388	.221	.070	.372	.213	.068	.358	.206	.066	.345	.200	.064	
2.0	.345	.189	.058	.337	.186	.057	.323	.180	.056	.310	.174	.055	.299	.169	.053	
3.0	.306	.163	.049	.300	.161	.048	.287	.156	.047	.276	.151	.046	.265	.147	.045	
4.0	.276	.143	.042	.270	.141	.042	.259	.137	.041	.248	.133	.040	.239	.130	.040	
5.0	.250	.128	.037	.245	.126	.037	.235	.122	.036	.226	.119	.035	.217	.116	.035	
6.0	.229	.115	.033	.224	.113	.033	.216	.110	.032	.207	.108	.032	.200	.105	.031	
7.0	.211	.104	.030	.207	.103	.029	.199	.101	.029	.191	.098	.029	.185	.096	.028	
8.0	.196	.096	.027	.192	.094	.027	.185	.092	.026	.178	.090	.026	.172	.088	.026	
9.0	.182	.088	.025	.179	.087	.024	.172	.085	.024	.166	.083	.024	.160	.081	.024	
10.0	.170	.082	.023	.167	.081	.023	.161	.079	.022	.156	.077	.022	.151	.076	.022	

pcc	80%			70%			50%			30%			10%			0
pw	50%	30%	10%	50%	30%	10%	50%	30%	10%	50%	30%	10%	50%	30%	10%	0
pfc	20%			20%			20%			20%			20%			0
RCR	RCR:Room Cavity Ratio						Ceiling Cavity Exitance Coefficients (CCEC)									
0.0	.216	.216	.216	.184	.184	.184	.126	.126	.126	.072	.072	.072	.023	.023	.023	
1.0	.212	.181	.153	.181	.155	.132	.124	.107	.091	.071	.062	.053	.023	.020	.017	
2.0	.205	.157	.117	.175	.135	.101	.120	.094	.071	.069	.054	.041	.022	.018	.013	
3.0	.197	.140	.095	.169	.121	.082	.116	.084	.058	.067	.049	.034	.022	.016	.011	
4.0	.189	.127	.080	.162	.110	.070	.112	.077	.049	.065	.045	.029	.021	.015	.010	
5.0	.181	.117	.070	.156	.101	.061	.107	.071	.043	.062	.042	.026	.020	.014	.008	
6.0	.173	.109	.063	.149	.094	.055	.103	.066	.039	.060	.039	.023	.019	.013	.008	
7.0	.166	.102	.058	.143	.089	.050	.099	.062	.036	.057	.037	.021	.019	.012	.007	
8.0	.159	.096	.053	.137	.084	.047	.095	.059	.033	.055	.035	.020	.018	.011	.007	
9.0	.153	.092	.050	.131	.079	.044	.091	.056	.031	.053	.033	.019	.017	.011	.006	
10.0	.146	.087	.048	.126	.076	.042	.088	.053	.030	.051	.032	.018	.017	.010	.006	

C Range: 0 - 360DEG
C Interval: 15.0DEG
Test Speed: HIGH
Temperature:25.1DEG
Operators:Congren Xie
Test Date:2021-05-18

γ Range: 0 - 180DEG
γ Interval: 1.0DEG
Test System:EVERFINE GO-2000A_V1 SYSTEM V2.0.291
Humidity:46.5%
Test Distance:10.149m [K=1.0000]
Remarks: standard: GB/T 9468-2008

Checker: Yonghao Yuan

Assessor: Chunbo Zhou

UGR(Unified Glare Rating) Table

ceiling/cavity	0.7	0.7	0.5	0.5	0.3	0.7	0.7	0.5	0.5	0.3
walls	0.5	0.3	0.5	0.3	0.3	0.5	0.3	0.5	0.3	0.3
working plane	0.2	0.2	0.2	0.2	0.2	0.2	0.2	0.2	0.2	0.2
Room dimensions	Viewed crosswise					Viewed endwise				
x = 2H y = 2H	17.7	19.3	18.0	19.6	19.9	16.2	17.8	16.5	18.1	18.4
3H	20.4	21.9	20.7	22.2	22.5	17.7	19.2	18.1	19.5	19.8
4H	21.8	23.3	22.2	23.6	23.9	18.2	19.7	18.6	20.0	20.3
6H	23.4	24.7	23.8	25.1	25.4	18.5	19.8	18.9	20.2	20.5
8H	24.1	25.5	24.5	25.8	26.2	18.5	19.8	18.9	20.2	20.5
12H	25.0	26.2	25.4	26.6	27.0	18.5	19.7	18.9	20.1	20.5
4H 2H	18.4	19.8	18.7	20.1	20.4	17.3	18.7	17.6	19.0	19.3
3H	21.3	22.5	21.7	22.9	23.3	19.1	20.3	19.5	20.7	21.1
4H	22.9	24.1	23.4	24.5	24.9	19.8	21.0	20.3	21.4	21.8
6H	24.7	25.7	25.1	26.2	26.6	20.4	21.4	20.8	21.8	22.3
8H	25.6	26.6	26.1	27.0	27.5	20.5	21.5	21.0	21.9	22.4
12H	26.5	27.5	27.0	27.9	28.4	20.6	21.5	21.0	21.9	22.4
8H 4H	23.3	24.3	23.8	24.8	25.2	20.9	21.9	21.4	22.3	22.8
6H	25.4	26.2	25.9	26.7	27.2	21.9	22.7	22.4	23.2	23.7
8H	26.5	27.2	27.0	27.7	28.3	22.2	23.0	22.8	23.5	24.0
12H	27.7	28.3	28.2	28.9	29.4	22.5	23.2	23.0	23.7	24.2
12H 4H	23.4	24.3	23.9	24.8	25.2	21.2	22.1	21.7	22.6	23.0
6H	25.5	26.3	26.0	26.8	27.3	22.4	23.1	22.9	23.6	24.2
8H	26.7	27.4	27.2	27.9	28.4	23.0	23.6	23.5	24.1	24.7
Variations with the observer position at spacings:										
S = 1.0H	+ 0.1 / - 0.1					+ 0.1 / - 0.1				
1.5H	+ 0.2 / - 0.3					+ 0.2 / - 0.3				
2.0H	+ 0.2 / - 0.3					+ 0.2 / - 0.4				

CIE Pub.117 Corrected 982.8 lm Total Lamp Luminous Flux.(8log(F/F0) = -0.1)

C Range: 0 - 360DEG
 C Interval: 15.0DEG
 Test Speed: HIGH
 Temperature:25.1DEG
 Operators:Congren Xie
 Test Date:2021-05-18

Checker: Yonghao Yuan

γ Range: 0 - 180DEG
 γ Interval: 1.0DEG
 Test System:EVERFINE GO-2000A_V1 SYSTEM V2.0.291
 Humidity:46.5%
 Test Distance:10.149m [K=1.0000]
 Remarks: standard: GB/T 9468-2008

Assessor: Chunbo Zhou

UTILIZATION FACTORS TABLE

REFLECTANCE										
Ceiling	0.8	0.8	0.8	0.7	0.7	0.7	0.5	0.5	0.5	0
Walls	0.7	0.5	0.3	0.7	0.5	0.3	0.7	0.5	0.3	0
Working plane	0.2	0.2	0.2	0.2	0.2	0.2	0.2	0.2	0.2	0
ROOM INDEX	UTILIZATION FACTORS (PERCENT) $k(RI) \times RCR = 5$									
$k = 0.60$	52	39	32	51	39	32	50	39	32	25
0.80	61	48	40	60	48	40	58	47	40	32
1.00	69	57	48	68	56	48	65	58	47	39
1.25	76	64	56	74	63	55	71	61	54	46
1.50	81	69	61	79	68	61	76	66	59	51
2.00	88	78	70	86	77	69	82	74	68	58
2.50	93	83	76	90	82	75	86	79	73	63
3.00	97	88	81	94	86	79	89	83	77	67
4.00	101	94	87	98	92	86	93	88	83	73
5.00	104	98	92	101	95	90	96	91	87	76
ROOM INDEX	UF (total)									Direct
According to DIN EN 13032-2 2004			Suspended					SHRNOM = 1.25		

C Range: 0 - 360DEG
 C Interval: 15.0DEG
 Test Speed: HIGH
 Temperature: 25.1DEG
 Operators: Congren Xie
 Test Date: 2021-05-18

Checker: Yonghao Yuan

γ Range: 0 - 180DEG
 γ Interval: 1.0DEG
 Test System: EVERFINE GO-2000A_V1 SYSTEM V2.0.291
 Humidity: 46.5%
 Test Distance: 10.149m [K=1.0000]
 Remarks: standard: GB/T 9468-2008

Assessor: Chunbo Zhou

ISOCANDELA DIAGRAM

Conical surface Flux(90deg):

411.49 lm

%lum = 41.9%

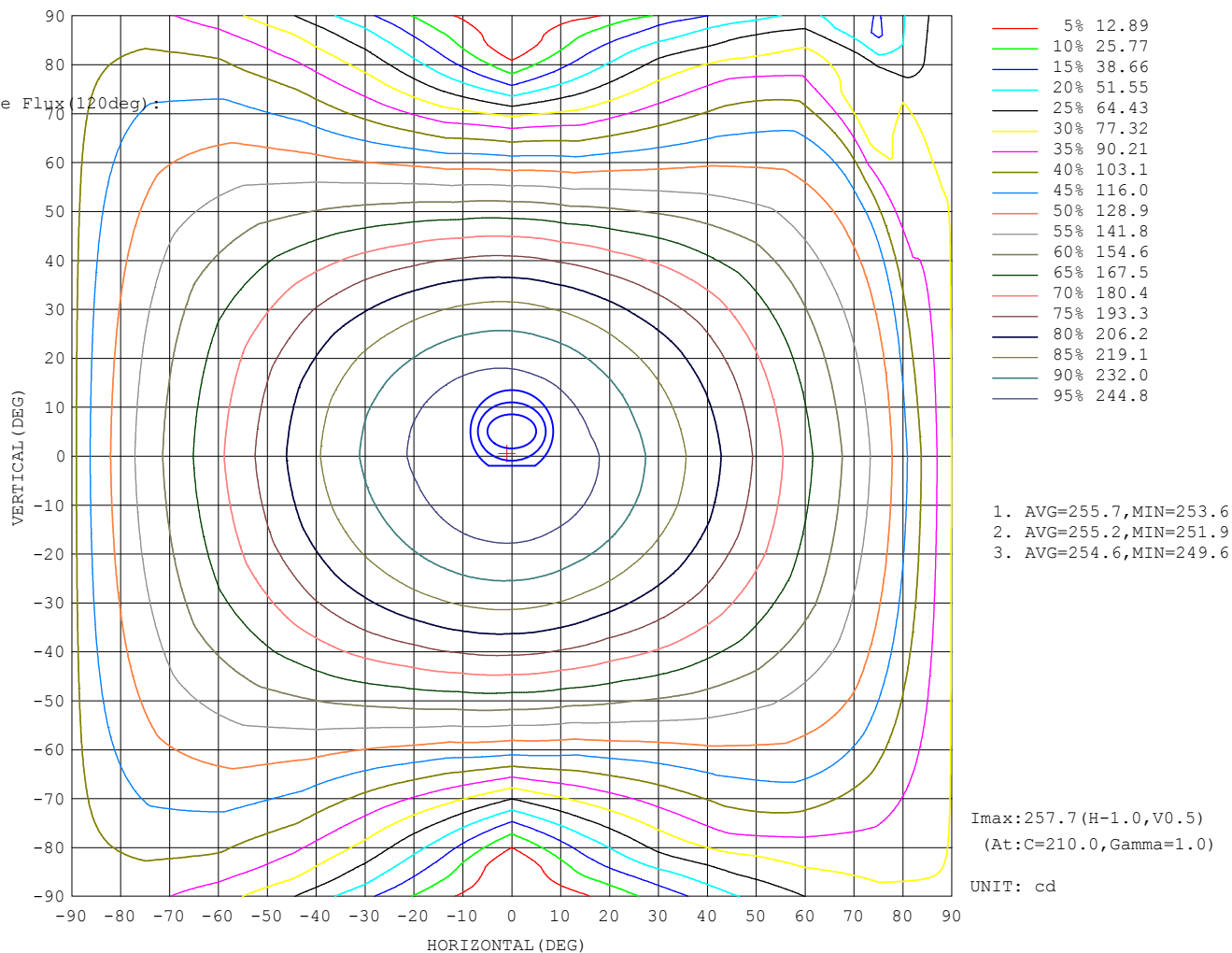
%lamp = 41.9%

Conical surface Flux(120deg):

633.2 lm

%lum = 64.4%

%lamp = 64.4%



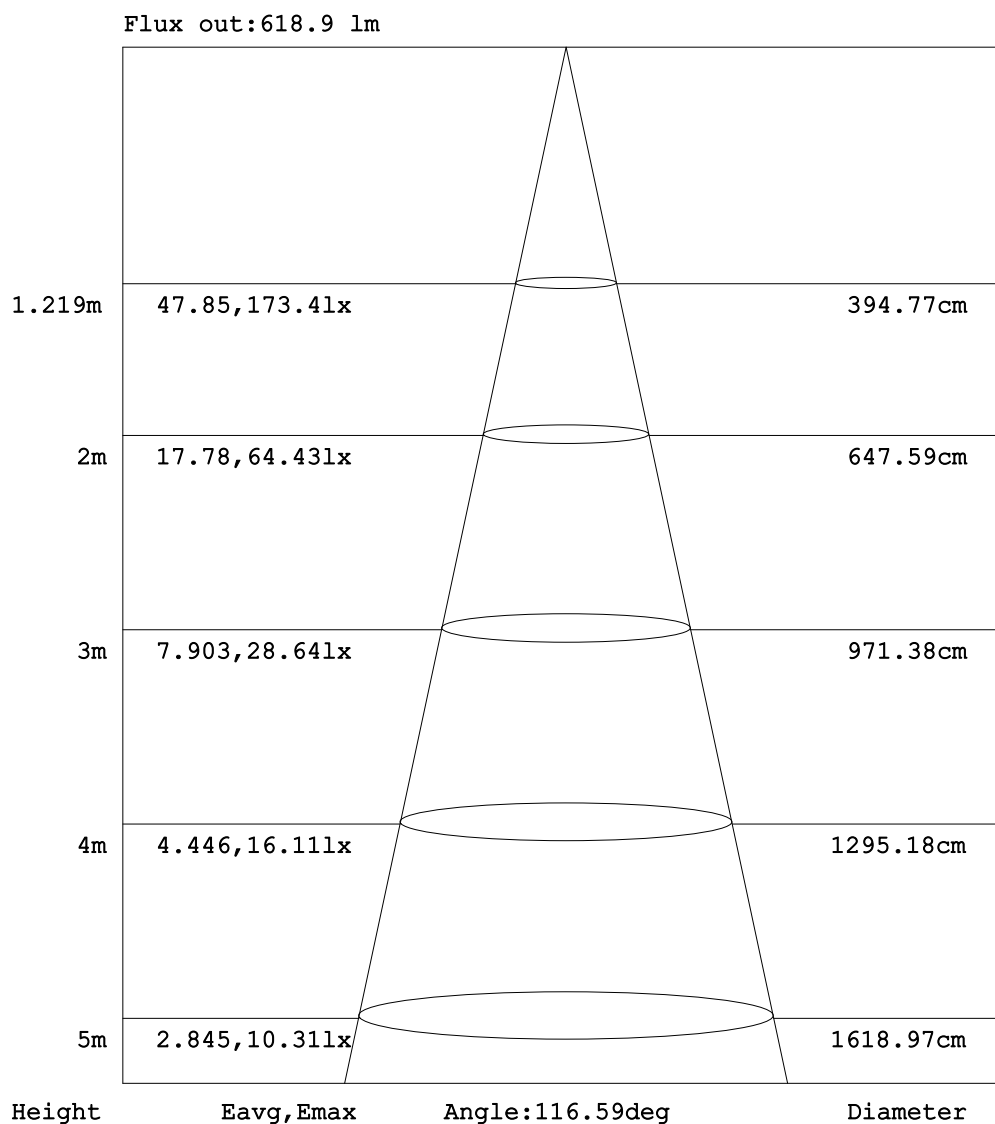
C Range: 0 - 360DEG
C Interval: 15.0DEG
Test Speed: HIGH
Temperature:25.1DEG
Operators:Congren Xie
Test Date:2021-05-18

Checker: Yonghao Yuan

γ Range: 0 - 180DEG
 γ Interval: 1.0DEG
Test System:EVERFINE GO-2000A_V1 SYSTEM V2.0.291
Humidity:46.5%
Test Distance:10.149m [K=1.0000]
Remarks: standard: GB/T 9468-2008

Assessor: Chunbo Zhou

AAI Figure



Note: The Curves indicate the illuminated area and the average illumination when the luminaire is at different distance.

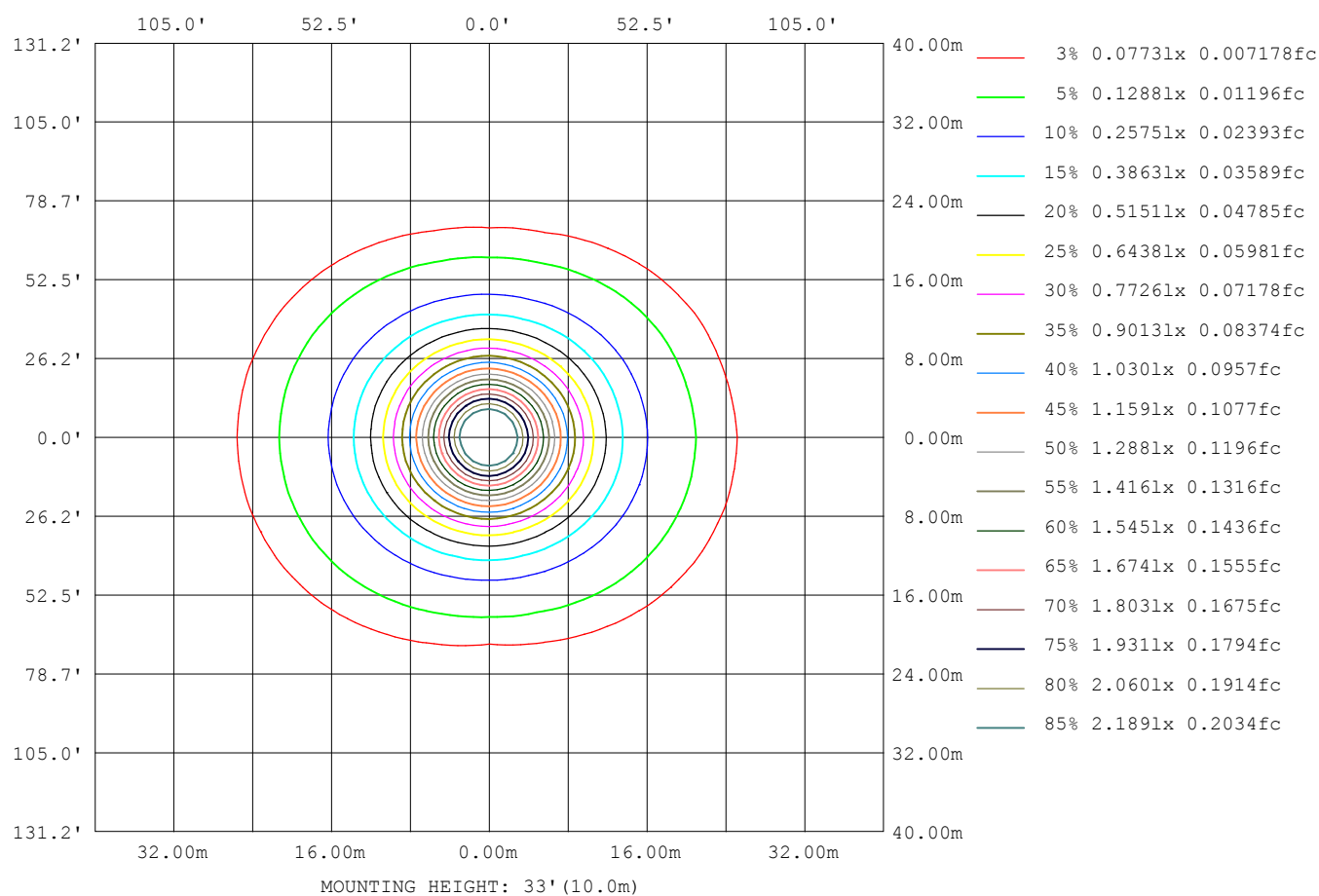
C Range: 0 - 360DEG
 C Interval: 15.0DEG
 Test Speed: HIGH
 Temperature: 25.1DEG
 Operators: Congren Xie
 Test Date: 2021-05-18

γ Range: 0 - 180DEG
 γ Interval: 1.0DEG
 Test System: EVERFINE GO-2000A_V1 SYSTEM V2.0.291
 Humidity: 46.5%
 Test Distance: 10.149m [K=1.0000]
 Remarks: standard: GB/T 9468-2008

Checker: Yonghao Yuan

Assessor: Chunbo Zhou

ISOLUX DIAGRAM



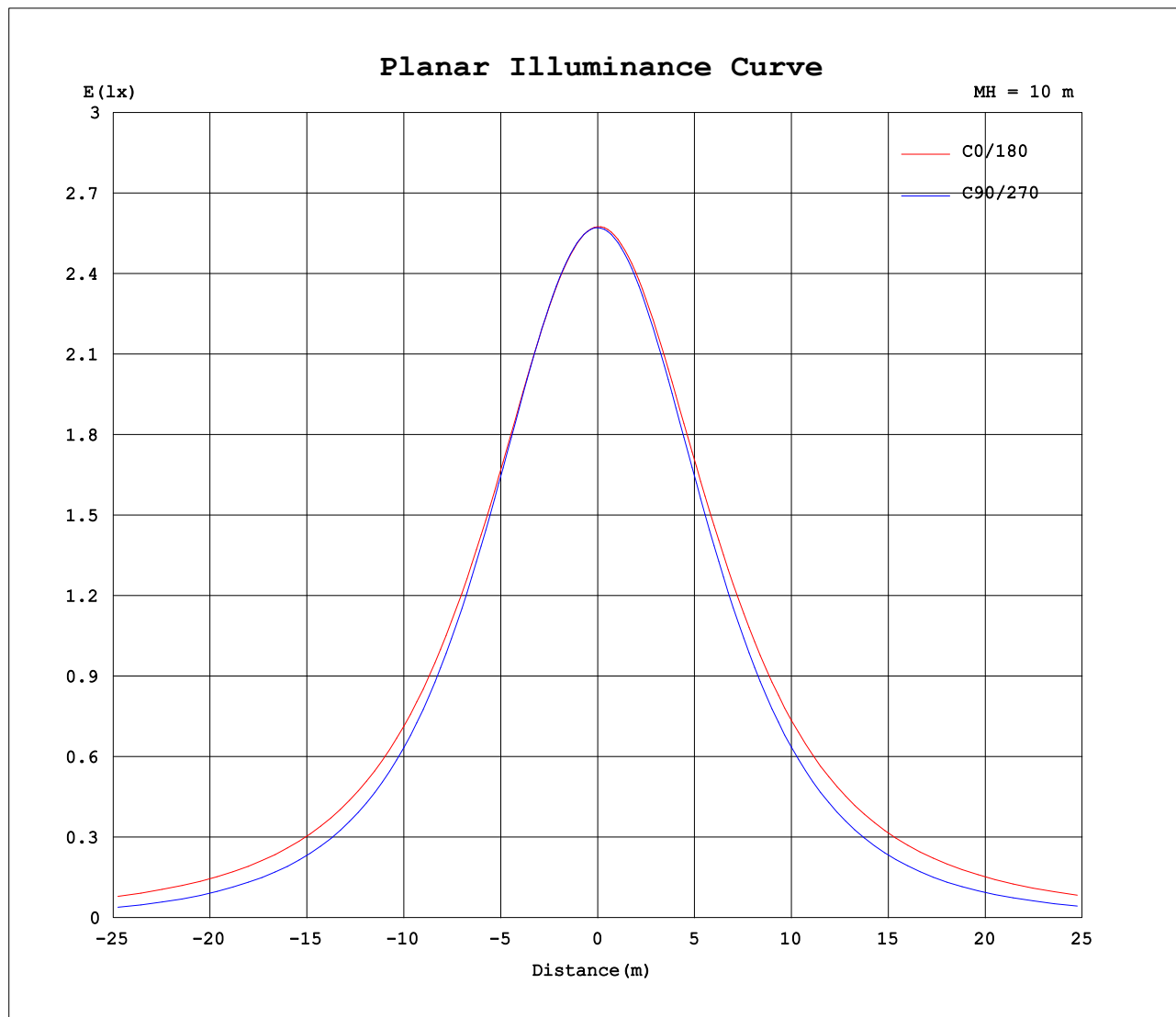
C Range: 0 - 360DEG
C Interval: 15.0DEG
Test Speed: HIGH
Temperature: 25.1DEG
Operators: Congren Xie
Test Date: 2021-05-18

Checker: Yonghao Yuan

γ Range: 0 - 180DEG
 γ Interval: 1.0DEG
Test System: EVERFINE GO-2000A_V1 SYSTEM V2.0.291
Humidity: 46.5%
Test Distance: 10.149m [K=1.0000]
Remarks: standard: GB/T 9468-2008

Assessor: Chunbo Zhou

Planar Illuminance Curve



C Range: 0 - 360DEG
C Interval: 15.0DEG
Test Speed: HIGH
Temperature: 25.1DEG
Operators: Congren Xie
Test Date: 2021-05-18

Checker: Yonghao Yuan

γ Range: 0 - 180DEG
 γ Interval: 1.0DEG
Test System: EVERFINE GO-2000A_V1 SYSTEM V2.0.291
Humidity: 46.5%
Test Distance: 10.149m [K=1.0000]
Remarks: standard: GB/T 9468-2008

Assessor: Chunbo Zhou

LUMINOUS DISTRIBUTION INTENSITY DATA

Table--1

UNIT: cd

C (DEG) γ (DEG)	0	15	30	45	60	75	90	105	120	135	150	165	180	195	210	225	240	255	270
0	258	258	258	258	257	257	257	257	257	256	256	256	258	258	258	258	257	257	257
5	256	256	256	256	256	256	256	256	256	256	256	256	257	257	257	257	257	256	256
10	253	253	253	253	253	253	253	253	253	254	253	254	255	255	255	255	254	254	253
15	248	248	248	248	248	248	248	249	249	249	250	250	252	251	251	250	250	249	248
20	242	242	242	241	241	241	242	242	243	243	244	245	247	246	246	245	243	242	242
25	235	235	234	233	232	233	233	234	235	236	237	239	240	240	239	237	235	234	233
30	228	228	226	224	222	222	222	223	225	227	229	232	234	233	231	228	226	224	223
35	220	219	217	213	210	209	210	211	214	217	221	224	226	225	222	218	214	212	210
40	212	210	207	202	197	195	196	197	201	206	211	215	218	216	213	207	201	198	196
45	202	201	196	190	183	179	179	182	187	194	201	206	208	207	202	195	187	182	180
50	192	190	185	177	168	162	161	164	172	181	190	196	198	196	191	182	172	165	162
55	181	179	173	163	152	143	142	146	156	168	178	185	188	186	179	168	156	146	143
60	171	168	161	149	135	124	121	126	139	154	166	175	178	175	167	154	140	127	122
65	160	157	148	135	118	104	94.1	106	122	140	155	164	168	165	155	140	123	106	99.1
70	149	146	136	121	102	82.9	64.9	85.4	106	127	143	154	158	154	144	127	106	85.5	73.3
75	137	134	124	108	86.1	62.8	37.2	65.3	90.8	115	132	143	147	143	132	114	90.6	65.1	42.9
80	120	117	108	93.2	71.1	44.6	13.1	47.3	76.6	101	119	130	135	131	119	101	76.3	46.8	16.6
85	98.2	95.1	85.6	71.0	52.2	29.3	0.25	32.5	61.3	86.3	105	116	121	117	105	85.5	60.9	31.9	1.17
90	76.8	73.9	64.6	50.1	30.9	11.7	0.25	16.5	41.9	65.5	83.1	93.9	98.4	94.6	83.7	65.3	41.9	16.2	0.17
95	35.1	33.2	25.9	17.4	6.57	0.77	0.22	0.72	8.92	22.6	34.7	43.6	46.1	43.6	36.2	24.6	10.9	1.06	0.19
100	15.7	14.9	11.0	3.68	0.90	0.44	0.25	0.34	1.26	6.09	13.7	19.7	21.8	20.2	15.2	7.32	1.56	0.36	0.25
105	5.90	4.84	1.69	0.98	0.67	0.48	0.31	0.40	0.53	1.49	3.72	6.54	7.68	6.73	4.10	1.77	0.52	0.35	0.30
110	1.30	1.11	1.06	0.88	0.74	0.52	0.40	0.47	0.52	0.65	1.45	2.24	2.36	2.18	1.52	0.74	0.50	0.41	0.37
115	0.91	1.03	0.98	0.84	0.68	0.57	0.51	0.55	0.58	0.67	0.84	1.11	1.09	1.03	0.69	0.61	0.56	0.48	0.45
120	1.02	1.03	0.96	0.83	0.67	0.63	0.56	0.62	0.62	0.71	0.84	0.91	0.74	0.73	0.72	0.64	0.62	0.53	0.54
125	1.02	1.03	0.94	0.82	0.75	0.70	0.64	0.70	0.67	0.76	0.85	0.95	0.77	0.75	0.75	0.68	0.67	0.58	0.61
130	1.03	1.03	0.91	0.89	0.78	0.77	0.70	0.75	0.75	0.81	0.86	0.98	0.81	0.76	0.80	0.76	0.73	0.65	0.68
135	1.03	1.02	0.91	0.93	0.85	0.84	0.77	0.82	0.78	0.85	0.90	1.02	0.84	0.83	0.83	0.77	0.78	0.73	0.76
140	1.03	1.00	0.94	0.98	0.91	0.89	0.84	0.87	0.84	0.90	0.95	1.05	0.87	0.85	0.88	0.83	0.83	0.76	0.83
145	1.04	1.03	0.98	1.02	0.93	0.94	0.89	0.93	0.89	0.95	1.01	1.08	0.90	0.87	0.91	0.86	0.88	0.83	0.89
150	1.06	1.05	1.02	1.04	0.96	0.98	0.93	0.97	0.93	0.99	1.07	1.13	0.95	0.92	0.94	0.92	0.94	0.87	0.94
155	1.09	1.06	1.04	1.05	1.01	1.02	0.97	1.01	0.97	1.02	1.10	1.17	0.98	0.93	0.98	0.94	0.97	0.93	0.98
160	1.10	1.07	1.05	1.08	1.03	1.06	1.01	1.04	1.01	1.05	1.12	1.19	1.02	0.96	1.02	0.98	1.02	0.96	1.02
165	1.10	1.09	1.05	1.09	1.04	1.08	1.04	1.07	1.03	1.08	1.18	1.23	1.07	1.01	1.05	1.01	1.05	1.01	1.06
170	1.10	1.10	1.07	1.11	1.09	1.10	1.08	1.09	1.05	1.10	1.19	1.24	1.09	1.04	1.08	1.05	1.09	1.06	1.10
175	1.10	1.11	1.09	1.10	1.10	1.11	1.09	1.11	1.09	1.11	1.20	1.27	1.10	1.09	1.12	1.10	1.10	1.10	1.10
180	1.10	1.11	1.10	1.10	1.10	1.11	1.10	1.11	1.10	1.11	1.24	1.28	1.10	1.10	1.11	1.11	1.11	1.10	1.10

C Range: 0 - 360DEG
C Interval: 15.0DEG
Test Speed: HIGH
Temperature:25.1DEG
Operators:Congren Xie
Test Date:2021-05-18

γ Range: 0 - 180DEG
γ Interval: 1.0DEG
Test System:EVERFINE GO-2000A_V1 SYSTEM V2.0.291
Humidity:46.5%
Test Distance:10.149m [K=1.0000]
Remarks: standard: GB/T 9468-2008

Checker: Yonghao Yuan

Assessor: Chunbo Zhou

LUMINOUS DISTRIBUTION INTENSITY DATA

Table--2

UNIT: cd

C (DEG) γ (DEG)	285	300	315	330	345														
0	257	257	256	256	256														
5	256	255	255	254	255														
10	253	252	252	251	251														
15	248	247	247	246	247														
20	241	240	240	240	241														
25	232	232	232	233	234														
30	221	222	223	224	226														
35	209	210	212	215	218														
40	195	197	201	205	209														
45	179	183	189	195	199														
50	162	168	176	183	188														
55	143	152	162	172	177														
60	124	136	148	160	166														
65	104	119	135	148	154														
70	83.1	103	121	136	142														
75	63.3	87.0	108	124	130														
80	45.3	71.9	93.0	108	106														
85	30.1	53.4	70.8	85.0	69.9														
90	8.93	27.4	43.9	55.3	37.5														
95	0.44	5.90	13.6	20.1	31.6														
100	0.47	0.78	4.23	9.73	12.5														
105	0.49	0.69	1.11	2.64	4.50														
110	0.48	0.66	0.87	1.05	1.29														
115	0.52	0.66	0.85	0.96	1.09														
120	0.55	0.70	0.83	0.95	1.06														
125	0.61	0.74	0.82	0.95	1.06														
130	0.68	0.79	0.85	0.94	1.08														
135	0.76	0.83	0.86	0.96	1.10														
140	0.84	0.90	0.91	0.98	1.17														
145	0.86	0.94	0.94	1.01	1.20														
150	0.92	0.97	0.96	1.02	1.21														
155	0.95	1.00	0.98	1.03	1.21														
160	0.99	1.03	1.01	1.05	1.22														
165	1.02	1.07	1.04	1.08	1.27														
170	1.05	1.10	1.08	1.10	1.28														
175	1.10	1.11	1.11	1.11	1.30														
180	1.10	1.11	1.11	1.11	1.34														

C Range: 0 - 360DEG
 C Interval: 15.0DEG
 Test Speed: HIGH
 Temperature: 25.1DEG
 Operators: Congren Xie
 Test Date: 2021-05-18

Checker: Yonghao Yuan

γ Range: 0 - 180DEG
 γ Interval: 1.0DEG
 Test System: EVERFINE GO-2000A_V1 SYSTEM V2.0.291
 Humidity: 46.5%
 Test Distance: 10.149m [K=1.0000]
 Remarks: standard: GB/T 9468-2008

Assessor: Chunbo Zhou