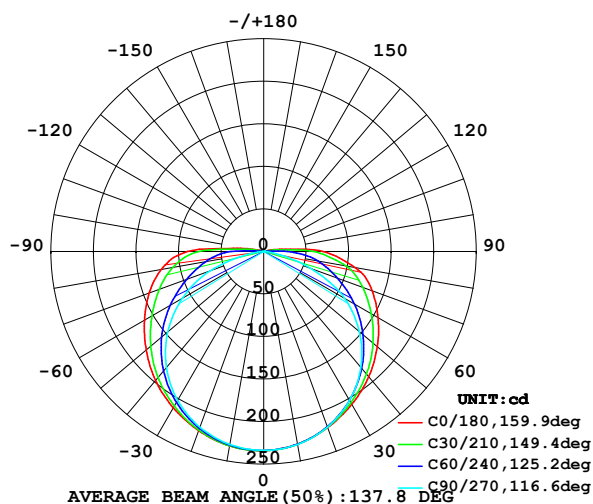


## LUMINAIRE PHOTOMETRIC TEST REPORT

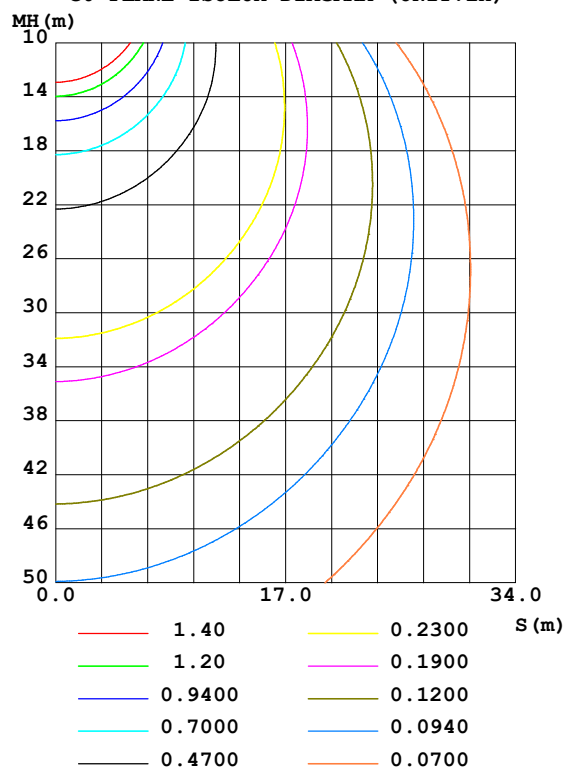
Test:U:24.00V I:0.4088A P:9.811W PF:1.000 Lamp Flux:893.499x1 lm		
NAME: LED Soft light bar	SUR.:0.08m*1m	SERIAL No.:

DATA OF LAMP		PHOTOMETRIC DATA Eff: 91.07 lm/W			
MODEL	EKF5110COB	Imax(cd)	234.3	S/MH(C0/180)	1.36
NOMINAL POWER(W)		LOR(%)	100.0	S/MH(C90/270)	1.29
RATED VOLTAGE(V)	24	TOTAL FLUX(lm)	893.50	$\eta$ UP,DN(C0-180)	1.7,48.3
NOMINAL FLUX(lm)	893.499	CIE CLASS	DIRECT	$\eta$ UP,DN(C180-360)	1.6,48.4
LAMPS INSIDE	1	$\eta$ up(%)	3.3	CIBSE SHR NOM	1.50
TEST VOLTAGE(V)	24	$\eta$ down(%)	96.7	CIBSE SHR MAX	1.55

LUMINOUS INTENSITY DISTRIBUTION DIAGRAM



C0 PLANE ISOLUX DIAGRAM (UNIT:lx)



C Range: 0 - 360DEG  
 C Interval: 15.0DEG  
 Test Speed: HIGH  
 Temperature: 25.1DEG  
 Operators: Congren Xie  
 Test Date: 2021-05-18

$\gamma$  Range: 0 - 180DEG  
 $\gamma$  Interval: 1.0DEG  
 Test System: EVERFINE GO-2000A\_V1 SYSTEM V2.0.291  
 Humidity: 46.5%  
 Test Distance: 10.149m [K=1.0000]  
 Remarks: standard: GB/T 9468-2008

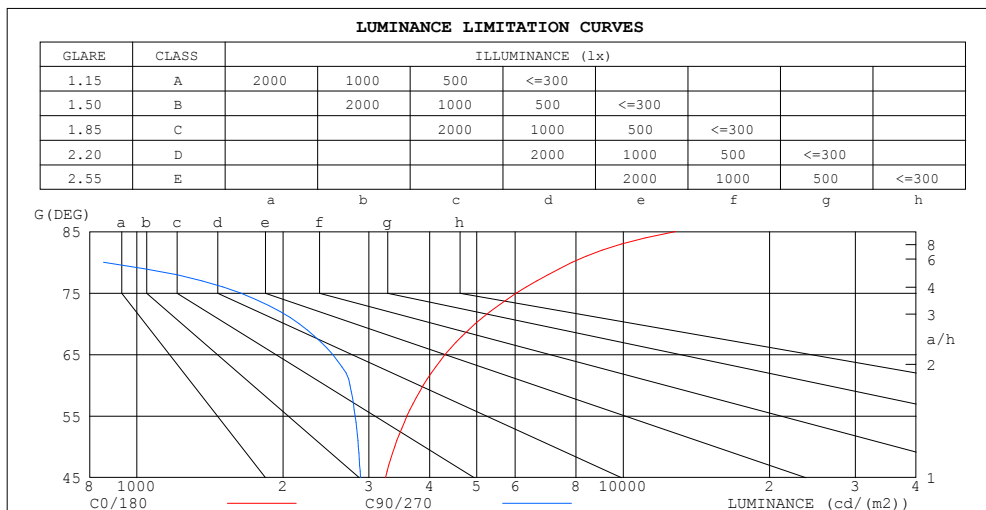
Checker: Yonghao Yuan

Assessor: Chunbo Zhou

## ZONAL FLUX DIAGRAM AND LUMINANCE LIMITATION CURVES

### ZONAL FLUX DIAGRAM:

$\gamma$	C0	C45	C90	C135	C180	C225	C270	C315	$\gamma$	$\Phi$ zone	$\Phi$ total	%lum, lamp
10	229.9	230.0	230.2	230.5	232.0	231.5	230.3	228.8	0- 10	22.14	22.14	2.48,2.48
20	220.3	219.5	219.7	221.4	224.1	222.3	219.7	218.3	10- 20	63.89	86.03	9.63,9.63
30	207.3	203.5	202.1	206.6	212.4	207.4	202.3	202.4	20- 30	98.54	184.6	20.7,20.7
40	192.3	183.5	177.7	187.3	197.8	188.2	178.1	182.5	30- 40	122.8	307.4	34.4,34.4
50	174.3	160.7	146.8	164.8	180.4	165.3	147.3	160.0	40- 50	134.7	442.1	49.5,49.5
60	155.3	135.4	109.8	139.8	161.9	140.1	110.5	135.0	50- 60	133.5	575.6	64.4,64.4
70	135.8	110.3	59.04	115.7	143.3	115.5	66.65	110.3	60- 70	120.8	696.5	78,78
80	109.1	84.70	11.88	92.15	122.3	91.66	15.11	84.52	70- 80	99.19	795.7	89.1,89.1
90	69.80	45.54	0.2299	59.51	89.49	59.36	0.1573	39.88	80- 90	68.34	864.0	96.7,96.7
100	14.28	3.349	0.2230	5.540	19.80	6.655	0.2313	3.846	90-100	23.19	887.2	99.3,99.3
110	1.181	0.7969	0.3639	0.5951	2.145	0.6755	0.3347	0.7876	100-110	2.974	890.2	99.6,99.6
120	0.9299	0.7505	0.5113	0.6492	0.6738	0.5852	0.4870	0.7525	110-120	0.7215	890.9	99.7,99.7
130	0.9322	0.8068	0.6392	0.7378	0.7328	0.6884	0.6197	0.7737	120-130	0.6394	891.5	99.8,99.8
140	0.9344	0.8902	0.7672	0.8214	0.7919	0.7573	0.7574	0.8269	130-140	0.6096	892.2	99.8,99.8
150	0.9639	0.9443	0.8459	0.9001	0.8607	0.8359	0.8508	0.8759	140-150	0.5412	892.7	99.9,99.9
160	0.9984	0.9780	0.9148	0.9512	0.9297	0.8901	0.9246	0.9197	150-160	0.4272	893.1	100,100
170	0.9984	1.007	0.9787	0.9984	0.9887	0.9539	0.9984	0.9835	160-170	0.2761	893.4	100,100
180	1.003	1.003	1.003	1.013	1.003	1.008	1.003	1.008	170-180	0.0968	893.5	100,100
DEG	LUMINOUS INTENSITY:cd									UNIT:lm		



C Range: 0 - 360DEG  
 C Interval: 15.0DEG  
 Test Speed: HIGH  
 Temperature:25.1DEG  
 Operators:Congren Xie  
 Test Date:2021-05-18

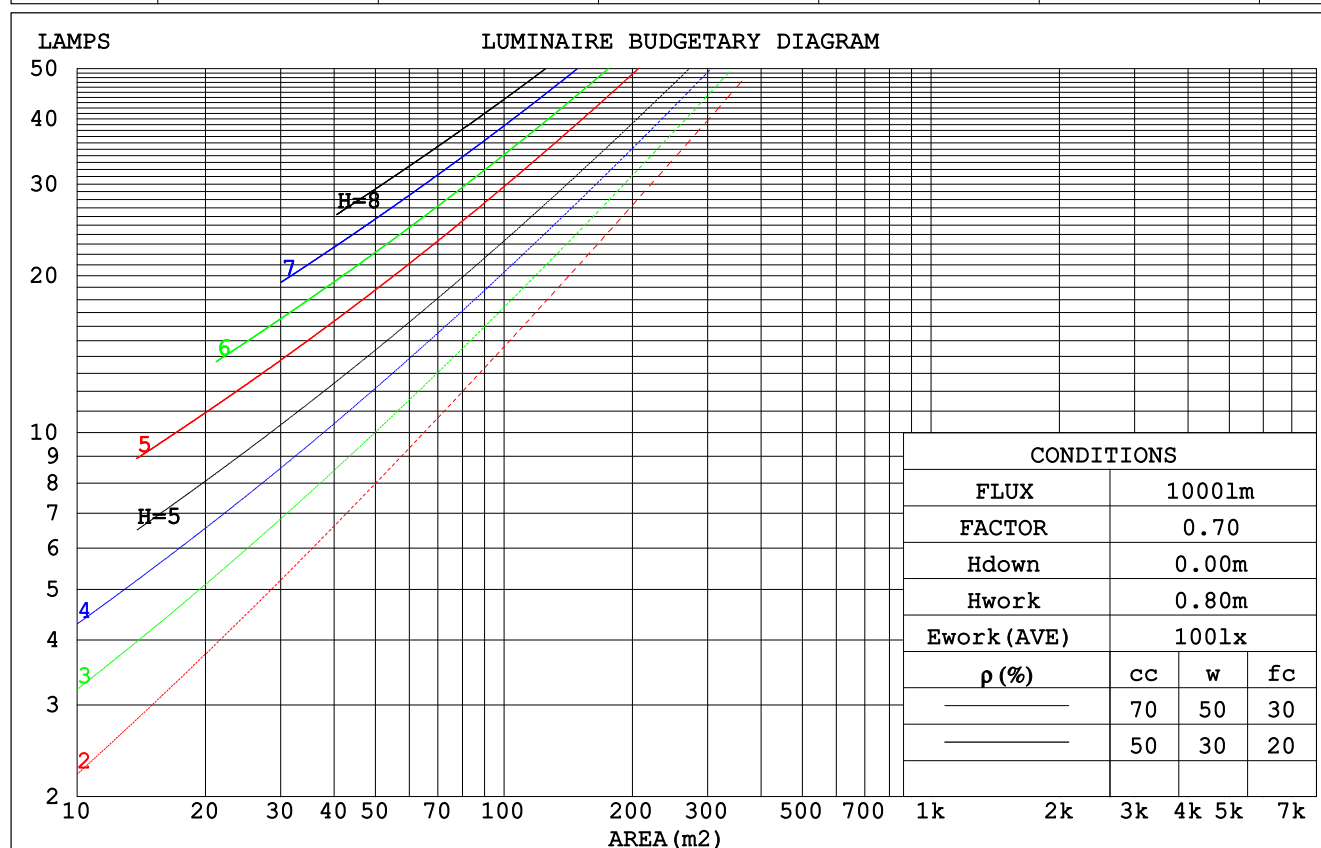
$\gamma$  Range: 0 - 180DEG  
 $\gamma$  Interval: 1.0DEG  
 Test System:EVERFINE GO-2000A\_V1 SYSTEM V2.0.291  
 Humidity:46.5%  
 Test Distance:10.149m [K=1.0000]  
 Remarks: standard: GB/T 9468-2008

Checker: Yonghao Yuan

Assessor: Chunbo Zhou

## CU AND LUMINAIRE BUDGETARY ESTIMATE DIAGRAM

pcc	80%			70%			50%			30%			10%			0
pw	50%	30%	10%	50%	30%	10%	50%	30%	10%	50%	30%	10%	50%	30%	10%	0
pfc	20%			20%			20%			20%			20%			0
RCR	RCR:Room Cavity Ratio						Coefficients of Utilization(CU)									
0.0	1.18	1.18	1.18	1.15	1.15	1.15	1.09	1.09	1.09	1.04	1.04	1.04	.99	.99	.99	.97
1.0	.99	.93	.88	.96	.91	.86	.91	.87	.83	.86	.83	.80	.82	.79	.77	.74
2.0	.84	.76	.69	.82	.74	.68	.78	.71	.66	.74	.68	.64	.70	.66	.62	.59
3.0	.73	.64	.56	.71	.62	.55	.67	.60	.54	.64	.58	.52	.61	.56	.51	.49
4.0	.64	.54	.47	.62	.53	.46	.59	.51	.45	.56	.50	.44	.54	.48	.43	.41
5.0	.57	.47	.40	.55	.46	.39	.53	.45	.39	.50	.43	.38	.48	.42	.37	.35
6.0	.51	.41	.34	.50	.41	.34	.47	.39	.33	.45	.38	.33	.43	.37	.32	.30
7.0	.46	.37	.30	.45	.36	.30	.43	.35	.29	.41	.34	.29	.40	.33	.28	.26
8.0	.42	.33	.27	.41	.32	.26	.39	.32	.26	.38	.31	.26	.36	.30	.25	.23
9.0	.38	.30	.24	.38	.29	.24	.36	.29	.23	.35	.28	.23	.33	.27	.23	.21
10.0	.35	.27	.21	.35	.27	.21	.33	.26	.21	.32	.25	.21	.31	.25	.21	.19



C Range: 0 - 360DEG  
 C Interval: 15.0DEG  
 Test Speed: HIGH  
 Temperature: 25.1DEG  
 Operators: Congren Xie  
 Test Date: 2021-05-18

γ Range: 0 - 180DEG  
 γ Interval: 1.0DEG  
 Test System: EVERFINE GO-2000A\_V1 SYSTEM V2.0.291  
 Humidity: 46.5%  
 Test Distance: 10.149m [K=1.0000]  
 Remarks: standard: GB/T 9468-2008

Checker: Yonghao Yuan

Assessor: Chunbo Zhou

## WEC AND CCEC

pcc	80%			70%			50%			30%			10%			0
pw	50%	30%	10%	50%	30%	10%	50%	30%	10%	50%	30%	10%	50%	30%	10%	0
pfc	20%			20%			20%			20%			20%			0
RCR	RCR:Room Cavity Ratio						Wall Exitance Coefficients (WEC)									
0.0																
1.0	.396	.225	.071	.388	.221	.070	.372	.213	.068	.358	.206	.066	.345	.200	.064	
2.0	.345	.189	.058	.337	.186	.057	.323	.180	.056	.310	.174	.055	.299	.169	.053	
3.0	.306	.163	.049	.300	.161	.048	.287	.156	.047	.276	.151	.046	.265	.147	.045	
4.0	.276	.143	.042	.270	.141	.042	.259	.137	.041	.248	.133	.040	.239	.130	.040	
5.0	.250	.128	.037	.245	.126	.037	.235	.122	.036	.226	.119	.035	.217	.116	.035	
6.0	.229	.115	.033	.224	.113	.033	.216	.110	.032	.207	.108	.032	.200	.105	.031	
7.0	.211	.104	.030	.207	.103	.029	.199	.101	.029	.191	.098	.029	.185	.096	.028	
8.0	.196	.096	.027	.192	.094	.027	.185	.092	.026	.178	.090	.026	.172	.088	.026	
9.0	.182	.088	.025	.179	.087	.024	.172	.085	.024	.166	.083	.024	.160	.081	.024	
10.0	.170	.082	.023	.167	.081	.023	.161	.079	.022	.156	.077	.022	.151	.076	.022	

pcc	80%			70%			50%			30%			10%			0
pw	50%	30%	10%	50%	30%	10%	50%	30%	10%	50%	30%	10%	50%	30%	10%	0
pfc	20%			20%			20%			20%			20%			0
RCR	RCR:Room Cavity Ratio						Ceiling Cavity Exitance Coefficients (CCEC)									
0.0	.216	.216	.216	.184	.184	.184	.126	.126	.126	.072	.072	.072	.023	.023	.023	
1.0	.212	.181	.153	.181	.155	.132	.124	.107	.091	.071	.062	.053	.023	.020	.017	
2.0	.205	.157	.117	.175	.135	.101	.120	.094	.071	.069	.054	.041	.022	.018	.013	
3.0	.197	.140	.095	.169	.121	.082	.116	.084	.058	.067	.049	.034	.022	.016	.011	
4.0	.189	.127	.080	.162	.110	.070	.112	.077	.049	.065	.045	.029	.021	.015	.010	
5.0	.181	.117	.070	.156	.101	.061	.107	.071	.043	.062	.042	.026	.020	.014	.008	
6.0	.173	.109	.063	.149	.094	.055	.103	.066	.039	.060	.039	.023	.019	.013	.008	
7.0	.166	.102	.058	.143	.089	.050	.099	.062	.036	.057	.037	.021	.019	.012	.007	
8.0	.159	.096	.053	.137	.084	.047	.095	.059	.033	.055	.035	.020	.018	.011	.007	
9.0	.153	.092	.050	.131	.079	.044	.091	.056	.031	.053	.033	.019	.017	.011	.006	
10.0	.146	.087	.048	.126	.076	.042	.088	.053	.030	.051	.032	.018	.017	.010	.006	

C Range: 0 - 360DEG  
 C Interval: 15.0DEG  
 Test Speed: HIGH  
 Temperature:25.1DEG  
 Operators:Congren Xie  
 Test Date:2021-05-18

Checker: Yonghao Yuan

γ Range: 0 - 180DEG  
 γ Interval: 1.0DEG  
 Test System:EVERFINE GO-2000A\_V1 SYSTEM V2.0.291  
 Humidity:46.5%  
 Test Distance:10.149m [K=1.0000]  
 Remarks: standard: GB/T 9468-2008

Assessor: Chunbo Zhou

UGR(Unified Glare Rating) Table

ceiling/cavity	0.7	0.7	0.5	0.5	0.3	0.7	0.7	0.5	0.5	0.3
walls	0.5	0.3	0.5	0.3	0.3	0.5	0.3	0.5	0.3	0.3
working plane	0.2	0.2	0.2	0.2	0.2	0.2	0.2	0.2	0.2	0.2
Room dimensions	Viewed crosswise					Viewed endwise				
x = 2H y = 2H	17.4	19.0	17.7	19.2	19.5	15.9	17.5	16.2	17.7	18.0
3H	20.0	21.5	20.4	21.8	22.2	17.4	18.9	17.7	19.2	19.5
4H	21.5	22.9	21.9	23.3	23.6	17.9	19.3	18.3	19.6	20.0
6H	23.0	24.4	23.4	24.7	25.1	18.2	19.5	18.5	19.8	20.2
8H	23.8	25.1	24.2	25.5	25.9	18.2	19.5	18.6	19.8	20.2
12H	24.6	25.9	25.1	26.3	26.7	18.1	19.4	18.5	19.8	20.2
4H 2H	18.0	19.5	18.4	19.8	20.1	16.9	18.4	17.3	18.7	19.0
3H	20.9	22.2	21.3	22.6	23.0	18.7	20.0	19.2	20.4	20.8
4H	22.6	23.8	23.0	24.2	24.6	19.5	20.7	19.9	21.1	21.5
6H	24.4	25.4	24.8	25.8	26.3	20.0	21.1	20.5	21.5	22.0
8H	25.3	26.2	25.7	26.7	27.1	20.2	21.2	20.6	21.6	22.1
12H	26.2	27.1	26.7	27.6	28.1	20.2	21.1	20.7	21.6	22.1
8H 4H	23.0	24.0	23.5	24.4	24.9	20.6	21.5	21.0	22.0	22.4
6H	25.1	25.9	25.6	26.4	26.9	21.5	22.4	22.0	22.8	23.3
8H	26.1	26.9	26.7	27.4	27.9	21.9	22.7	22.4	23.2	23.7
12H	27.3	28.0	27.9	28.5	29.1	22.2	22.9	22.7	23.4	23.9
12H 4H	23.0	24.0	23.5	24.4	24.9	20.9	21.8	21.3	22.2	22.7
6H	25.2	26.0	25.7	26.4	27.0	22.1	22.8	22.6	23.3	23.8
8H	26.4	27.0	26.9	27.6	28.1	22.6	23.3	23.2	23.8	24.4
Variations with the observer position at spacings:										
S = 1.0H	+ 0.1 / - 0.1					+ 0.1 / - 0.1				
1.5H	+ 0.2 / - 0.3					+ 0.2 / - 0.3				
2.0H	+ 0.2 / - 0.3					+ 0.2 / - 0.4				

CIE Pub.117 Corrected 893.5 lm Total Lamp Luminous Flux. (8log(F/F0) = -0.4)

C Range: 0 - 360DEG  
 C Interval: 15.0DEG  
 Test Speed: HIGH  
 Temperature: 25.1DEG  
 Operators: Congren Xie  
 Test Date: 2021-05-18

Checker: Yonghao Yuan

γ Range: 0 - 180DEG  
 γ Interval: 1.0DEG  
 Test System: EVERFINE GO-2000A\_V1 SYSTEM V2.0.291  
 Humidity: 46.5%  
 Test Distance: 10.149m [K=1.0000]  
 Remarks: standard: GB/T 9468-2008

Assessor: Chunbo Zhou

## UTILIZATION FACTORS TABLE

REFLECTANCE										
Ceiling	0.8	0.8	0.8	0.7	0.7	0.7	0.5	0.5	0.5	0
Walls	0.7	0.5	0.3	0.7	0.5	0.3	0.7	0.5	0.3	0
Working plane	0.2	0.2	0.2	0.2	0.2	0.2	0.2	0.2	0.2	0
ROOM INDEX	UTILIZATION FACTORS (PERCENT) $k(RI) \times RCR = 5$									
$k = 0.60$	52	39	32	51	39	32	50	39	32	25
0.80	61	48	40	60	48	40	58	47	40	32
1.00	69	57	48	68	56	48	65	58	47	39
1.25	76	64	56	74	63	55	71	61	54	46
1.50	81	69	61	79	68	61	76	66	59	51
2.00	88	78	70	86	77	69	82	74	68	58
2.50	93	83	76	90	82	75	86	79	73	63
3.00	97	88	81	94	86	79	89	83	77	67
4.00	101	94	87	98	92	86	93	88	83	73
5.00	104	98	92	101	95	90	96	91	87	76
ROOM INDEX	UF (total)									Direct
According to DIN EN 13032-2 2004			Suspended					SHRNOM = 1.25		

C Range: 0 - 360DEG  
 C Interval: 15.0DEG  
 Test Speed: HIGH  
 Temperature: 25.1DEG  
 Operators: Congren Xie  
 Test Date: 2021-05-18

Checker: Yonghao Yuan

$\gamma$  Range: 0 - 180DEG  
 $\gamma$  Interval: 1.0DEG  
 Test System: EVERFINE GO-2000A\_V1 SYSTEM V2.0.291  
 Humidity: 46.5%  
 Test Distance: 10.149m [K=1.0000]  
 Remarks: standard: GB/T 9468-2008

Assessor: Chunbo Zhou

## ISOCANDELA DIAGRAM

Conical surface Flux(90deg):

374.08 lm

%lum = 41.9%

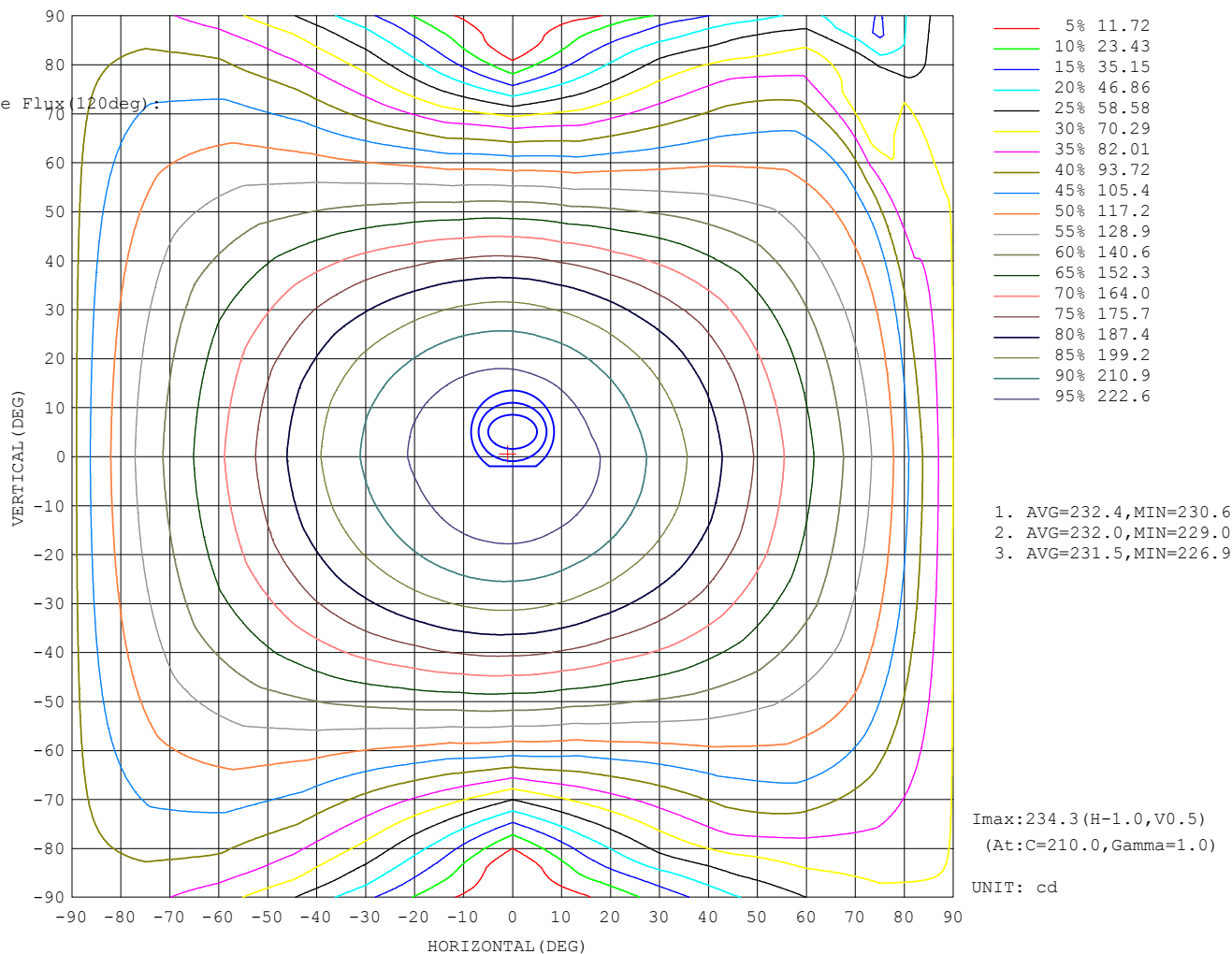
%lamp = 41.9%

Conical surface Flux(120deg):

575.64 lm

%lum = 64.4%

%lamp = 64.4%



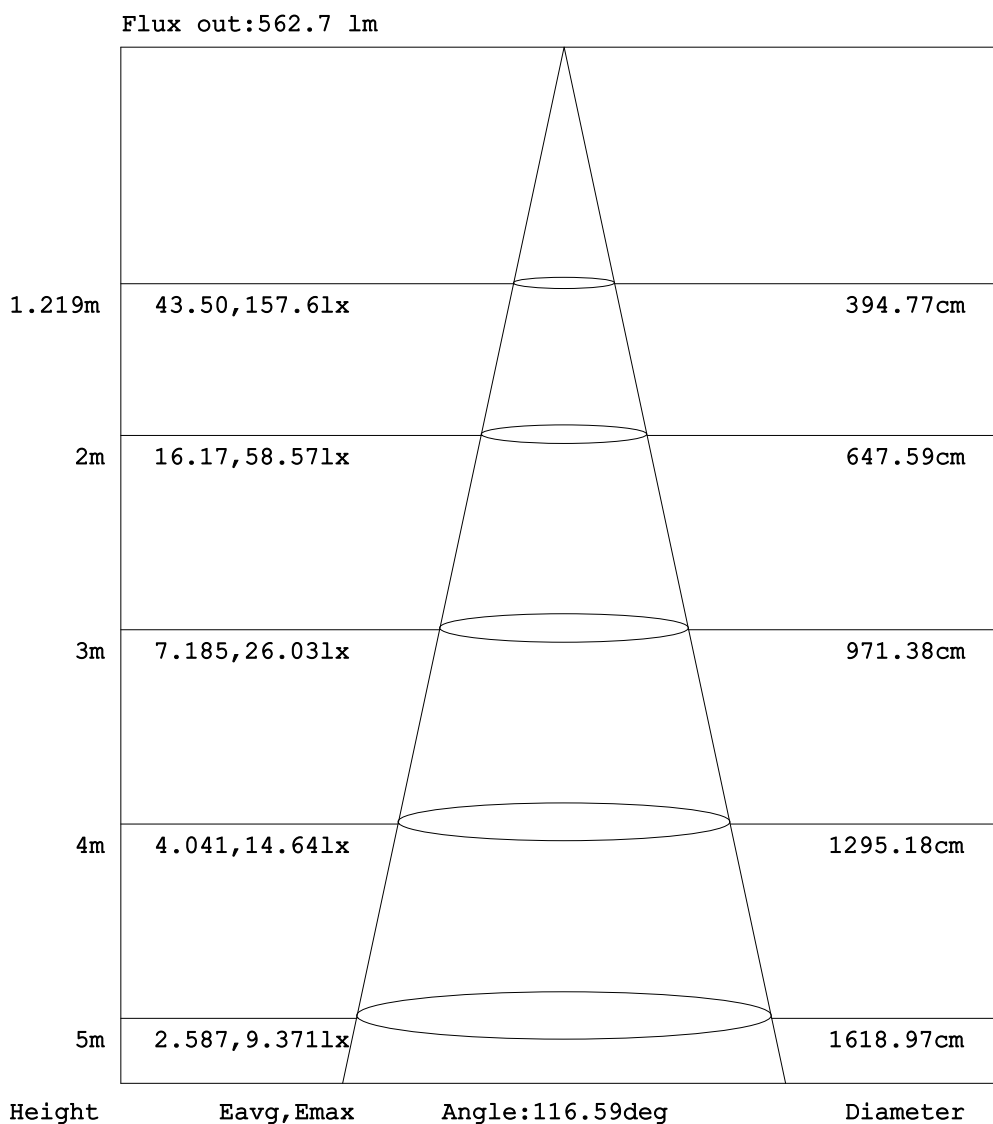
C Range: 0 - 360DEG  
C Interval: 15.0DEG  
Test Speed: HIGH  
Temperature:25.1DEG  
Operators:Congren Xie  
Test Date:2021-05-18

Checker: Yonghao Yuan

γ Range: 0 - 180DEG  
γ Interval: 1.0DEG  
Test System:EVERFINE GO-2000A\_V1 SYSTEM V2.0.291  
Humidity:46.5%  
Test Distance:10.149m [K=1.0000]  
Remarks: standard: GB/T 9468-2008

Assessor: Chunbo Zhou

## AAI Figure



Note: The Curves indicate the illuminated area and the average illumination when the luminaire is at different distance.

C Range: 0 - 360DEG  
C Interval: 15.0DEG  
Test Speed: HIGH  
Temperature: 25.1DEG  
Operators: Congren Xie  
Test Date: 2021-05-18

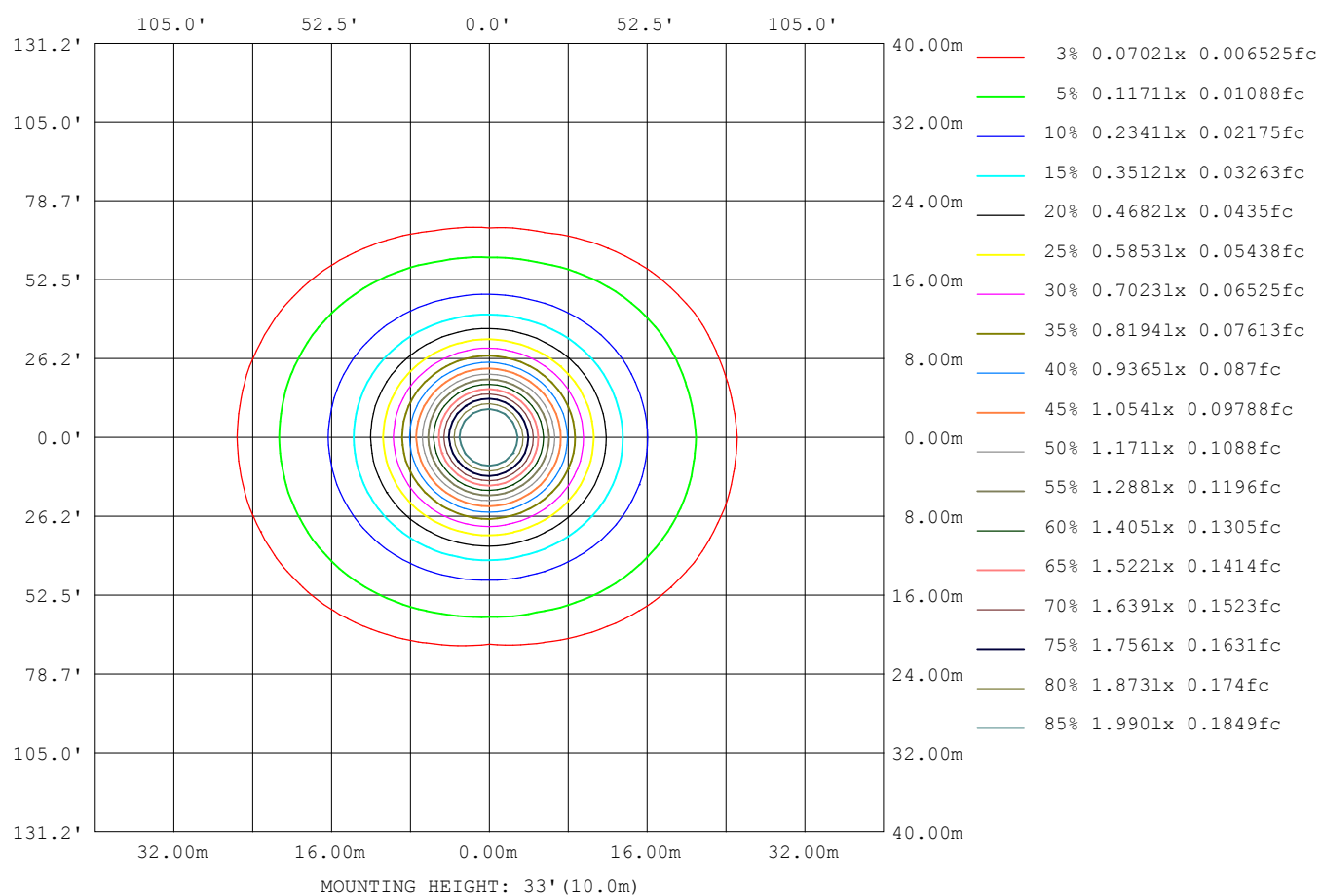
$\gamma$  Range: 0 - 180DEG  
 $\gamma$  Interval: 1.0DEG  
Test System: EVERFINE GO-2000A\_V1 SYSTEM V2.0.291  
Humidity: 46.5%  
Test Distance: 10.149m [K=1.0000]  
Remarks: standard: GB/T 9468-2008

Checker: Yonghao Yuan

Assessor: Chunbo Zhou



## ISOLUX DIAGRAM



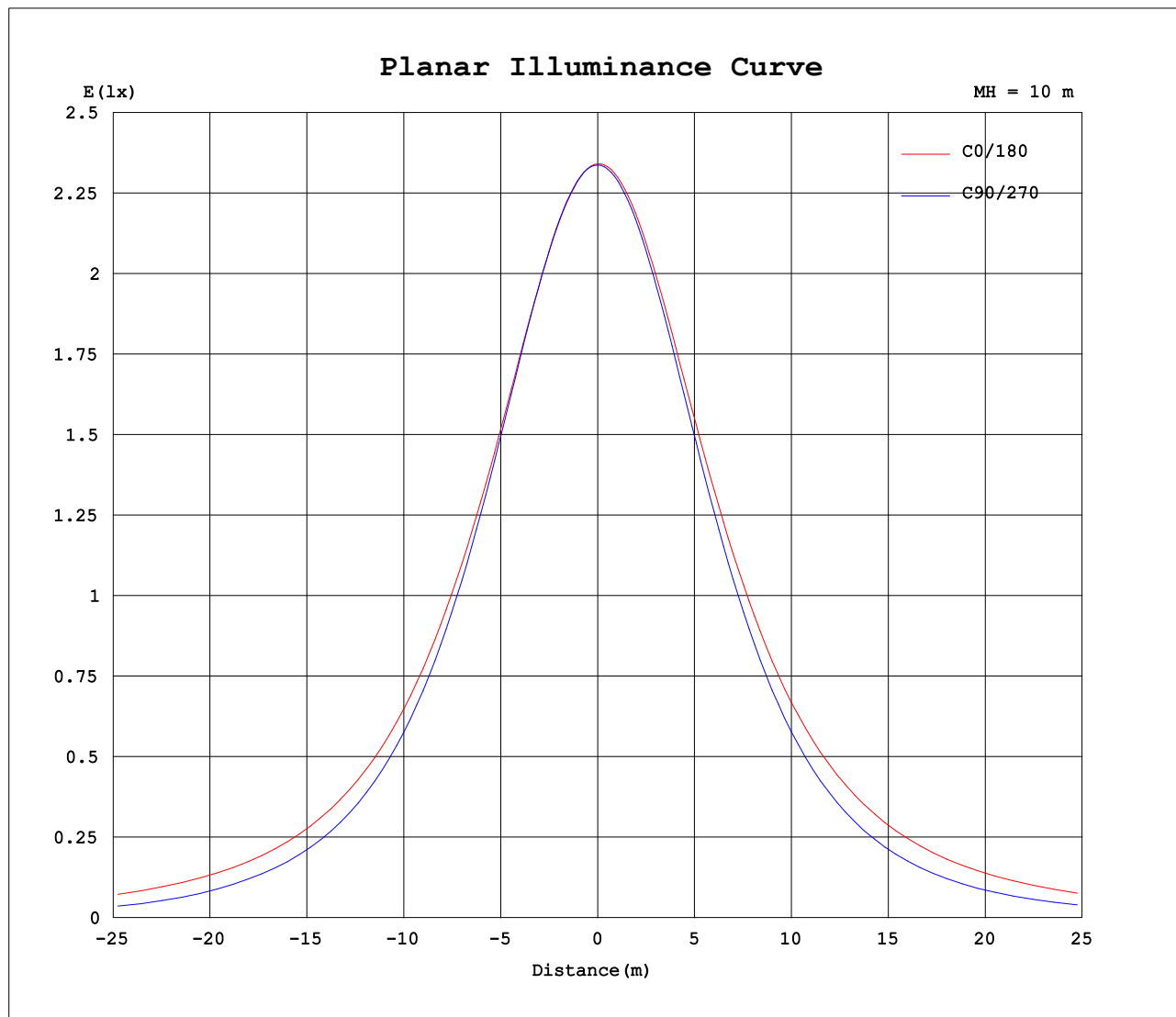
C Range: 0 - 360DEG  
C Interval: 15.0DEG  
Test Speed: HIGH  
Temperature: 25.1DEG  
Operators: Congren Xie  
Test Date: 2021-05-18

Checker: Yonghao Yuan

$\gamma$  Range: 0 - 180DEG  
 $\gamma$  Interval: 1.0DEG  
Test System: EVERFINE GO-2000A\_V1 SYSTEM V2.0.291  
Humidity: 46.5%  
Test Distance: 10.149m [K=1.0000]  
Remarks: standard: GB/T 9468-2008

Assessor: Chunbo Zhou

## Planar Illuminance Curve



C Range: 0 - 360DEG  
C Interval: 15.0DEG  
Test Speed: HIGH  
Temperature: 25.1DEG  
Operators: Congren Xie  
Test Date: 2021-05-18

Checker: Yonghao Yuan

$\gamma$  Range: 0 - 180DEG  
 $\gamma$  Interval: 1.0DEG  
Test System: EVERFINE GO-2000A\_V1 SYSTEM V2.0.291  
Humidity: 46.5%  
Test Distance: 10.149m [K=1.0000]  
Remarks: standard: GB/T 9468-2008

Assessor: Chunbo Zhou

## LUMINOUS DISTRIBUTION INTENSITY DATA

Table--1

UNIT: cd

C (DEG) γ (DEG)	0	15	30	45	60	75	90	105	120	135	150	165	180	195	210	225	240	255	270
0	234	234	234	234	234	234	234	233	233	233	233	233	234	234	234	234	234	234	234
5	233	233	233	233	233	233	233	233	233	233	232	233	234	234	234	234	233	233	233
10	230	230	230	230	230	230	230	230	230	230	230	231	232	232	232	232	231	231	230
15	226	226	226	226	225	226	226	226	226	227	227	227	229	229	228	228	227	226	226
20	220	220	220	219	219	219	220	220	221	221	222	223	224	224	223	222	221	220	220
25	214	214	213	212	211	211	212	212	213	215	216	217	219	218	217	215	214	213	212
30	207	207	205	204	202	202	202	203	204	207	209	211	212	212	210	207	205	203	202
35	200	199	197	194	191	190	191	192	194	197	201	204	206	205	202	198	195	192	191
40	192	191	188	184	179	178	178	179	182	187	192	196	198	197	193	188	183	180	178
45	184	182	178	173	166	163	163	165	170	176	183	187	189	188	184	177	170	165	164
50	174	173	168	161	152	147	147	149	156	165	172	178	180	179	173	165	157	150	147
55	165	163	157	148	138	130	129	133	142	152	162	168	171	169	163	153	142	133	130
60	155	153	146	135	123	113	110	115	127	140	151	159	162	159	152	140	127	115	111
65	146	143	135	123	107	94.1	85.5	96.3	111	127	141	149	153	150	141	128	111	96.5	90.1
70	136	133	124	110	92.5	75.3	59.0	77.6	96.3	116	130	140	143	140	131	115	96.4	77.7	66.7
75	125	122	113	98.1	78.2	57.1	33.8	59.4	82.6	104	120	130	133	130	120	104	82.3	59.2	39.0
80	109	107	98.4	84.7	64.6	40.5	11.9	43.0	69.7	92.1	108	119	122	119	109	91.7	69.3	42.5	15.1
85	89.3	86.5	77.8	64.6	47.4	26.7	0.23	29.6	55.7	78.4	95.3	106	110	106	95.3	77.8	55.4	29.0	1.07
90	69.8	67.2	58.7	45.5	28.1	10.6	0.23	15.0	38.1	59.5	75.6	85.4	89.5	86.0	76.1	59.4	38.1	14.7	0.16
95	31.9	30.2	23.5	15.8	5.97	0.70	0.20	0.66	8.10	20.6	31.6	39.6	41.9	39.7	32.9	22.4	9.95	0.96	0.18
100	14.3	13.5	10.0	3.35	0.82	0.40	0.22	0.31	1.15	5.54	12.5	17.9	19.8	18.4	13.8	6.65	1.42	0.33	0.23
105	5.37	4.40	1.54	0.89	0.61	0.43	0.29	0.36	0.48	1.35	3.38	5.94	6.98	6.11	3.73	1.61	0.47	0.32	0.27
110	1.18	1.01	0.96	0.80	0.67	0.47	0.36	0.43	0.47	0.60	1.32	2.03	2.15	1.98	1.38	0.68	0.46	0.37	0.33
115	0.83	0.94	0.89	0.77	0.62	0.52	0.47	0.50	0.53	0.61	0.76	1.01	0.99	0.94	0.63	0.56	0.51	0.44	0.41
120	0.93	0.94	0.87	0.75	0.61	0.58	0.51	0.57	0.57	0.65	0.77	0.83	0.67	0.66	0.65	0.59	0.56	0.48	0.49
125	0.93	0.93	0.85	0.74	0.68	0.64	0.58	0.63	0.61	0.69	0.77	0.86	0.70	0.68	0.68	0.62	0.61	0.53	0.55
130	0.93	0.93	0.82	0.81	0.71	0.70	0.64	0.68	0.68	0.74	0.78	0.90	0.73	0.69	0.73	0.69	0.66	0.59	0.62
135	0.93	0.93	0.83	0.85	0.77	0.76	0.70	0.74	0.71	0.78	0.82	0.93	0.77	0.76	0.75	0.70	0.71	0.66	0.69
140	0.93	0.91	0.86	0.89	0.83	0.81	0.77	0.79	0.77	0.82	0.87	0.96	0.79	0.77	0.80	0.76	0.75	0.69	0.76
145	0.94	0.93	0.89	0.92	0.85	0.85	0.81	0.85	0.81	0.86	0.92	0.98	0.82	0.79	0.83	0.79	0.80	0.76	0.81
150	0.96	0.96	0.92	0.94	0.88	0.90	0.85	0.88	0.85	0.90	0.97	1.02	0.86	0.84	0.86	0.84	0.85	0.79	0.85
155	0.99	0.97	0.94	0.96	0.91	0.93	0.89	0.92	0.88	0.92	1.00	1.07	0.89	0.85	0.89	0.86	0.88	0.84	0.89
160	1.00	0.97	0.96	0.98	0.94	0.96	0.91	0.95	0.91	0.95	1.02	1.08	0.93	0.88	0.92	0.89	0.92	0.88	0.92
165	1.00	0.99	0.96	0.99	0.95	0.98	0.94	0.97	0.94	0.98	1.07	1.12	0.97	0.91	0.95	0.91	0.96	0.92	0.96
170	1.00	1.00	0.97	1.01	0.99	1.00	0.98	0.99	0.96	1.00	1.08	1.13	0.99	0.94	0.98	0.95	0.99	0.96	1.00
175	1.00	1.01	0.99	1.00	1.00	1.01	0.99	1.01	0.99	1.01	1.09	1.15	1.00	0.99	1.02	1.00	1.00	1.00	1.00
180	1.00	1.01	1.00	1.00	1.00	1.01	1.00	1.01	1.00	1.01	1.13	1.17	1.00	1.00	1.01	1.01	1.01	1.00	1.00

C Range: 0 - 360DEG  
C Interval: 15.0DEG  
Test Speed: HIGH  
Temperature:25.1DEG  
Operators:Congren Xie  
Test Date:2021-05-18

γ Range: 0 - 180DEG  
γ Interval: 1.0DEG  
Test System:EVERFINE GO-2000A\_V1 SYSTEM V2.0.291  
Humidity:46.5%  
Test Distance:10.149m [K=1.0000]  
Remarks: standard: GB/T 9468-2008

Checker: Yonghao Yuan

Assessor: Chunbo Zhou

## LUMINOUS DISTRIBUTION INTENSITY DATA

Table--2

UNIT: cd

C (DEG) γ (DEG)	285	300	315	330	345													
0	233	233	233	233	233													
5	232	232	232	231	231													
10	230	229	229	228	229													
15	225	225	224	224	224													
20	219	219	218	218	219													
25	211	211	211	212	212													
30	201	202	202	204	205													
35	190	191	193	196	198													
40	177	179	183	187	190													
45	163	166	172	177	181													
50	147	152	160	167	171													
55	130	138	148	156	161													
60	113	123	135	145	151													
65	94.1	108	123	135	140													
70	75.6	93.2	110	124	129													
75	57.5	79.0	98.1	112	118													
80	41.2	65.3	84.5	98.0	96.7													
85	27.3	48.5	64.4	77.3	63.5													
90	8.12	24.9	39.9	50.3	34.1													
95	0.40	5.36	12.4	18.2	28.8													
100	0.43	0.71	3.85	8.85	11.4													
105	0.44	0.63	1.01	2.40	4.09													
110	0.44	0.60	0.79	0.95	1.17													
115	0.47	0.60	0.77	0.87	0.99													
120	0.50	0.64	0.75	0.86	0.96													
125	0.55	0.67	0.75	0.86	0.97													
130	0.61	0.72	0.77	0.86	0.98													
135	0.69	0.75	0.78	0.87	1.00													
140	0.76	0.82	0.83	0.90	1.06													
145	0.78	0.86	0.86	0.92	1.09													
150	0.84	0.89	0.88	0.93	1.10													
155	0.87	0.91	0.89	0.94	1.10													
160	0.90	0.94	0.92	0.95	1.11													
165	0.93	0.97	0.94	0.98	1.16													
170	0.96	1.00	0.98	1.00	1.17													
175	1.00	1.01	1.01	1.01	1.18													
180	1.00	1.01	1.01	1.01	1.22													

C Range: 0 - 360DEG  
 C Interval: 15.0DEG  
 Test Speed: HIGH  
 Temperature:25.1DEG  
 Operators:Congren Xie  
 Test Date:2021-05-18

Checker: Yonghao Yuan

γ Range: 0 - 180DEG  
 γ Interval: 1.0DEG  
 Test System:EVERFINE GO-2000A\_V1 SYSTEM V2.0.291  
 Humidity:46.5%  
 Test Distance:10.149m [K=1.0000]  
 Remarks: standard: GB/T 9468-2008

Assessor: Chunbo Zhou