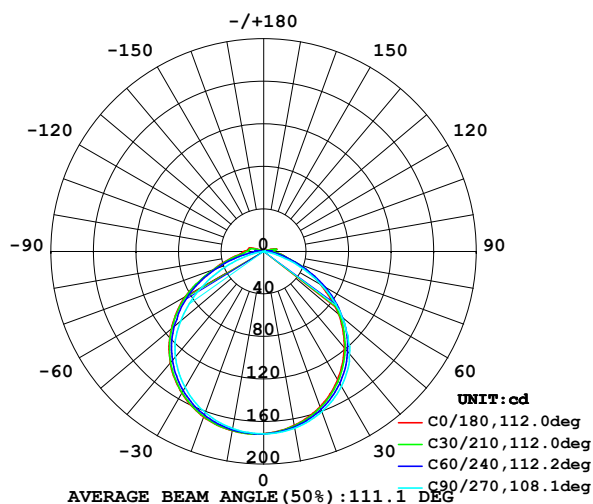


## LUMINAIRE PHOTOMETRIC TEST REPORT

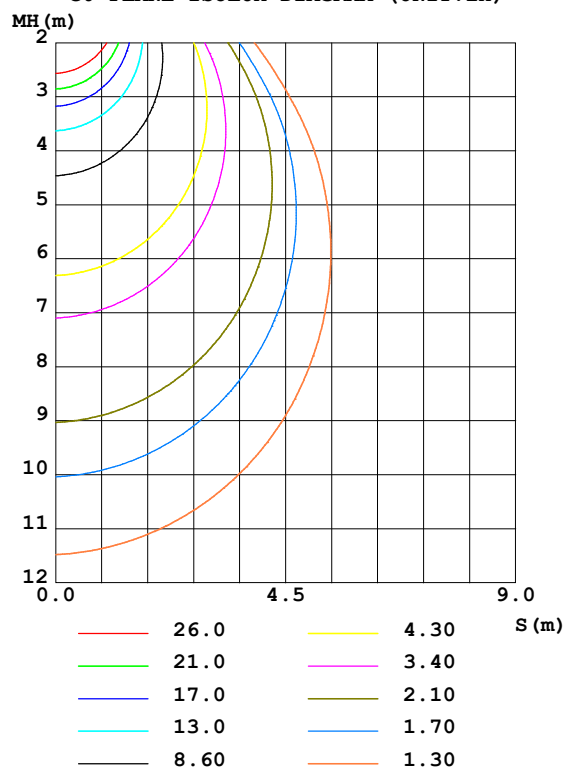
Test:U:12.00V I:0.4204A P:5.045W PF:1.000 Lamp Flux:501.727x1 lm		
NAME: LED Soft light bar	SUR.:0.1m*1m	SERIAL No.:

DATA OF LAMP		PHOTOMETRIC DATA Eff: 99.45 lm/W			
MODEL	EKF4548HL9065	I <sub>max</sub> (cd)	172.0	S/MH (C0/180)	1.33
NOMINAL POWER (W)		LOR (%)	100.0	S/MH (C90/270)	1.28
RATED VOLTAGE (V)	12	TOTAL FLUX (lm)	501.73	η UP, DN (C0-180)	1.7, 47.3
NOMINAL FLUX (lm)	501.727	CIE CLASS	DIRECT	η UP, DN (C180-360)	1.8, 49.2
LAMPS INSIDE	1	η up (%)	3.4	CIBSE SHR NOM	1.25
TEST VOLTAGE (V)	12	η down (%)	96.6	CIBSE SHR MAX	1.35

LUMINOUS INTENSITY DISTRIBUTION DIAGRAM



C0 PLANE ISOLUX DIAGRAM (UNIT:lx)



C Range: 0 - 360DEG  
 C Interval: 15.0DEG  
 Test Speed: HIGH  
 Temperature: 25.4DEG  
 Operators: Congren Xie  
 Test Date: 2021-05-18

Checker: Congren Xie

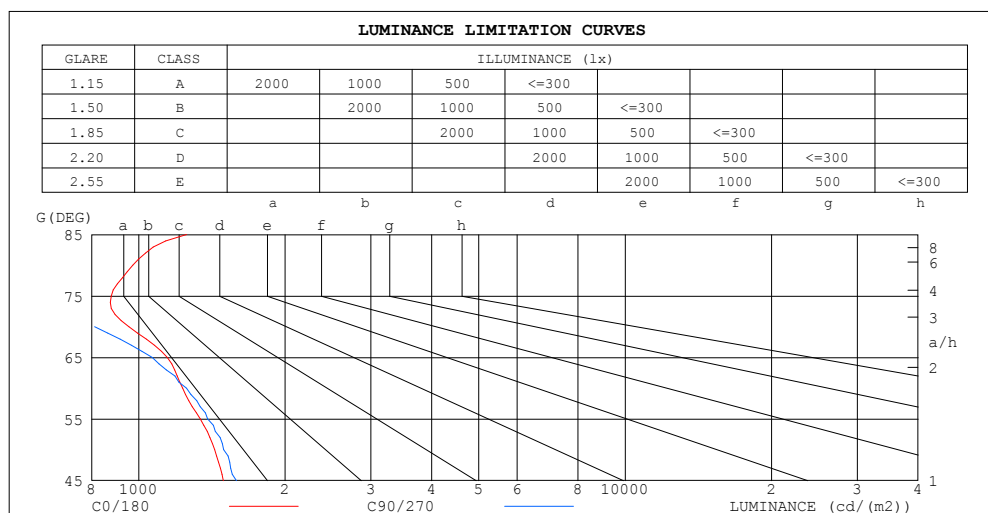
γ Range: 0 - 180DEG  
 γ Interval: 1.0DEG  
 Test System: EVERFINE GO-2000A\_V1 SYSTEM V2.0.291  
 Humidity: 48.3%  
 Test Distance: 10.149m [K=1.0000]  
 Remarks: standard: GB/T 9468-2008

Assessor: Chunbo Zhou

### ZONAL FLUX DIAGRAM AND LUMINANCE LIMITATION CURVES

#### ZONAL FLUX DIAGRAM:

$\gamma$	C0	C45	C90	C135	C180	C225	C270	C315	$\gamma$	$\Phi$ zone	$\Phi$ total	%lum, lamp
10	166.0	167.0	168.6	170.3	171.1	170.7	169.0	167.3	0- 10	16.24	16.24	3.24,3.24
20	155.3	157.1	160.3	163.6	165.5	164.4	161.2	157.6	10- 20	46.69	62.93	12.5,12.5
30	139.1	141.8	146.3	151.1	154.0	152.6	147.9	142.4	20- 30	71.20	134.1	26.7,26.7
40	118.1	120.9	125.8	132.8	136.8	135.1	129.2	121.9	30- 40	86.30	220.4	43.9,43.9
50	92.03	95.00	96.04	108.8	113.4	111.7	101.9	96.09	40- 50	89.28	309.7	61.7,61.7
60	61.55	64.15	62.64	78.84	85.64	82.56	67.65	65.18	50- 60	78.37	388.1	77.3,77.3
70	32.62	34.48	27.75	45.47	50.39	49.29	31.73	35.14	60- 70	55.22	443.3	88.4,88.4
80	16.88	14.90	3.540	20.98	27.64	22.85	5.357	14.89	70- 80	28.59	471.9	94.1,94.1
90	8.352	6.969	0.0444	11.99	18.73	12.84	0.0444	7.278	80- 90	12.57	484.4	96.6,96.6
100	11.82	10.08	0.0824	11.31	14.64	11.49	0.1289	9.452	90-100	9.070	493.5	98.4,98.4
110	4.884	1.365	0.1696	1.788	6.155	1.706	0.1713	1.536	100-110	5.347	498.9	99.4,99.4
120	1.503	0.5035	0.2869	0.4376	0.9645	0.3804	0.2664	0.4569	110-120	1.205	500.1	99.7,99.7
130	0.6476	0.4628	0.3694	0.4797	0.4450	0.3931	0.3867	0.3594	120-130	0.4264	500.5	99.8,99.8
140	0.5707	0.5262	0.4717	0.5351	0.4691	0.4797	0.4821	0.4817	130-140	0.3636	500.9	99.8,99.8
150	0.5978	0.6023	0.5931	0.6086	0.5262	0.5477	0.5985	0.5829	140-150	0.3425	501.2	99.9,99.9
160	0.6190	0.6636	0.6050	0.6327	0.6023	0.5980	0.6467	0.6073	150-160	0.2796	501.5	100,100
170	0.6847	0.6930	0.6593	0.6783	0.6593	0.6023	0.6910	0.6656	160-170	0.1815	501.7	100,100
180	0.6974	0.6974	0.6910	0.6974	0.7037	0.7037	0.6974	0.7100	170-180	0.0651	501.7	100,100
DEG	LUMINOUS INTENSITY:cd									UNIT:lm		



LUMINANCE cd/(m2)		
G (DEG)	C0/180	C90/270
85	1254	20
80	972	204
75	878	513
70	954	811
65	1145	1066
60	1231	1253
55	1338	1386
50	1432	1494
45	1493	1589

C Range: 0 - 360DEG  
C Interval: 15.0DEG  
Test Speed: HIGH  
Temperature:25.4DEG  
Operators:Congren Xie  
Test Date:2021-05-18

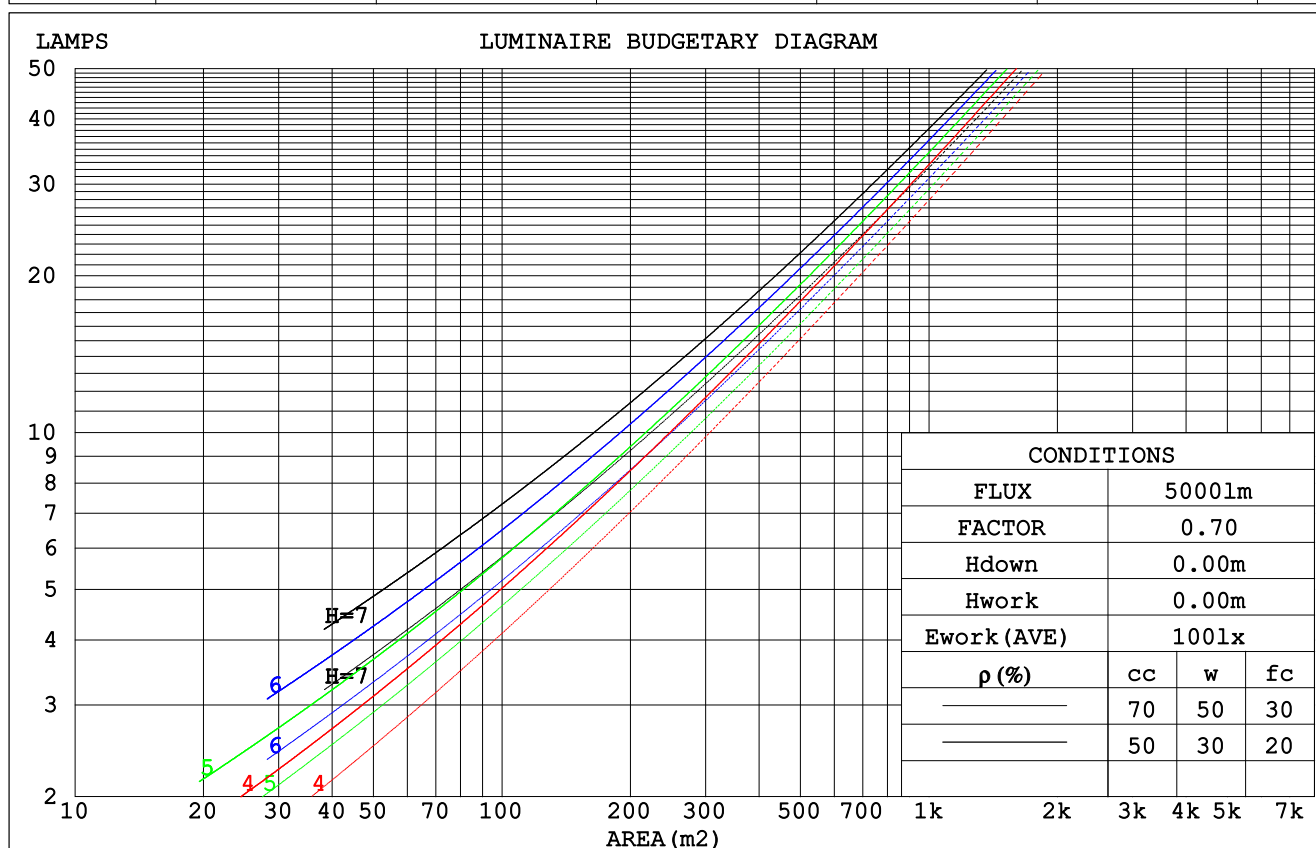
$\gamma$  Range: 0 - 180DEG  
 $\gamma$  Interval: 1.0DEG  
Test System:EVERFINE GO-2000A\_V1 SYSTEM V2.0.291  
Humidity:48.3%  
Test Distance:10.149m [K=1.0000]  
Remarks: standard: GB/T 9468-2008

Checker: Congren Xie

Assessor: Chunbo Zhou

## CU AND LUMINAIRE BUDGETARY ESTIMATE DIAGRAM

pcc	80%			70%			50%			30%			10%			0
pw	50%	30%	10%	50%	30%	10%	50%	30%	10%	50%	30%	10%	50%	30%	10%	0
pfc	20%			20%			20%			20%			20%			0
RCR	RCR:Room Cavity Ratio						Coefficients of Utilization(CU)									
0.0	1.18	1.18	1.18	1.15	1.15	1.15	1.09	1.09	1.09	1.04	1.04	1.04	.99	.99	.99	.97
1.0	1.03	.99	.95	1.01	.97	.93	.96	.92	.90	.91	.89	.86	.87	.85	.83	.81
2.0	.90	.83	.78	.88	.82	.76	.84	.79	.74	.80	.76	.72	.77	.73	.70	.68
3.0	.79	.71	.65	.77	.70	.64	.74	.68	.62	.71	.65	.61	.68	.63	.59	.57
4.0	.70	.62	.55	.69	.61	.54	.66	.59	.53	.63	.57	.52	.60	.55	.51	.49
5.0	.63	.54	.47	.61	.53	.47	.59	.52	.46	.57	.50	.45	.54	.49	.44	.42
6.0	.56	.48	.41	.55	.47	.41	.53	.46	.40	.51	.45	.40	.49	.44	.39	.37
7.0	.51	.42	.36	.50	.42	.36	.48	.41	.36	.47	.40	.35	.45	.39	.35	.33
8.0	.47	.38	.32	.46	.38	.32	.44	.37	.32	.43	.36	.31	.41	.35	.31	.29
9.0	.43	.35	.29	.42	.34	.29	.41	.34	.29	.39	.33	.28	.38	.32	.28	.26
10.0	.39	.32	.26	.39	.31	.26	.38	.31	.26	.36	.30	.26	.35	.30	.25	.24



C Range: 0 - 360DEG  
 C Interval: 15.0DEG  
 Test Speed: HIGH  
 Temperature: 25.4DEG  
 Operators: Congren Xie  
 Test Date: 2021-05-18

γ Range: 0 - 180DEG  
 γ Interval: 1.0DEG  
 Test System: EVERFINE GO-2000A\_V1 SYSTEM V2.0.291  
 Humidity: 48.3%  
 Test Distance: 10.149m [K=1.0000]  
 Remarks: standard: GB/T 9468-2008

Checker: Congren Xie

Assessor: Chunbo Zhou

## WEC AND CCEC

pcc	80%			70%			50%			30%			10%			0
pw	50%	30%	10%	50%	30%	10%	50%	30%	10%	50%	30%	10%	50%	30%	10%	0
pfc	20%			20%			20%			20%			20%			0
RCR	RCR:Room Cavity Ratio						Wall Exitance Coefficients (WEC)									
0.0																
1.0	.308	.175	.055	.300	.171	.054	.284	.163	.052	.270	.156	.050	.257	.149	.048	
2.0	.287	.157	.048	.280	.154	.047	.266	.148	.046	.254	.142	.045	.243	.137	.043	
3.0	.265	.141	.042	.259	.139	.042	.247	.134	.041	.236	.129	.040	.226	.125	.039	
4.0	.245	.127	.037	.240	.125	.037	.229	.121	.036	.219	.118	.035	.210	.114	.035	
5.0	.227	.116	.034	.222	.114	.033	.212	.111	.033	.203	.107	.032	.195	.104	.031	
6.0	.211	.106	.030	.206	.104	.030	.198	.101	.029	.190	.099	.029	.182	.096	.028	
7.0	.196	.097	.028	.192	.096	.027	.185	.093	.027	.177	.091	.026	.171	.089	.026	
8.0	.184	.090	.025	.180	.089	.025	.173	.086	.025	.166	.084	.024	.160	.082	.024	
9.0	.172	.083	.023	.169	.082	.023	.163	.080	.023	.157	.079	.022	.151	.077	.022	
10.0	.162	.078	.022	.159	.077	.021	.153	.075	.021	.148	.073	.021	.143	.072	.021	

pcc	80%			70%			50%			30%			10%			0
pw	50%	30%	10%	50%	30%	10%	50%	30%	10%	50%	30%	10%	50%	30%	10%	0
pfc	20%			20%			20%			20%			20%			0
RCR	RCR:Room Cavity Ratio						Ceiling Cavity Exitance Coefficients (CCEC)									
0.0	.217	.217	.217	.185	.185	.185	.126	.126	.126	.073	.073	.073	.023	.023	.023	
1.0	.207	.183	.161	.177	.157	.139	.121	.108	.096	.070	.062	.056	.022	.020	.018	
2.0	.198	.159	.125	.170	.136	.108	.116	.094	.075	.067	.055	.044	.022	.018	.014	
3.0	.190	.141	.102	.163	.122	.088	.112	.085	.062	.065	.049	.036	.021	.016	.012	
4.0	.183	.128	.086	.157	.110	.075	.108	.077	.052	.062	.045	.031	.020	.015	.010	
5.0	.175	.117	.075	.151	.102	.065	.104	.071	.046	.060	.042	.027	.019	.014	.009	
6.0	.168	.109	.067	.145	.095	.058	.100	.066	.041	.058	.039	.024	.019	.013	.008	
7.0	.162	.102	.061	.139	.089	.053	.096	.062	.037	.056	.037	.022	.018	.012	.007	
8.0	.155	.097	.056	.134	.084	.049	.092	.059	.035	.054	.035	.021	.017	.011	.007	
9.0	.149	.092	.053	.129	.080	.046	.089	.056	.033	.052	.033	.019	.017	.011	.006	
10.0	.144	.087	.050	.124	.076	.044	.086	.053	.031	.050	.032	.018	.016	.010	.006	

C Range: 0 - 360DEG  
 C Interval: 15.0DEG  
 Test Speed: HIGH  
 Temperature:25.4DEG  
 Operators:Congren Xie  
 Test Date:2021-05-18

Checker: Congren Xie

γ Range: 0 - 180DEG  
 γ Interval: 1.0DEG  
 Test System:EVERFINE GO-2000A\_V1 SYSTEM V2.0.291  
 Humidity:48.3%  
 Test Distance:10.149m [K=1.0000]  
 Remarks: standard: GB/T 9468-2008

Assessor: Chunbo Zhou

UGR(Unified Glare Rating) Table

ceiling/cavity	0.7	0.7	0.5	0.5	0.3	0.7	0.7	0.5	0.5	0.3
walls	0.5	0.3	0.5	0.3	0.3	0.5	0.3	0.5	0.3	0.3
working plane	0.2	0.2	0.2	0.2	0.2	0.2	0.2	0.2	0.2	0.2
Room dimensions	Viewed crosswise					Viewed endwise				
x = 2H y = 2H	13.3	14.7	13.6	15.0	15.3	13.5	15.0	13.8	15.2	15.5
3H	14.4	15.7	14.7	16.0	16.3	14.6	15.9	14.9	16.2	16.5
4H	14.8	16.1	15.1	16.4	16.7	14.8	16.1	15.2	16.4	16.7
6H	15.2	16.4	15.6	16.7	17.1	14.8	16.0	15.2	16.4	16.7
8H	15.4	16.6	15.8	16.9	17.3	14.8	16.0	15.2	16.3	16.7
12H	15.6	16.7	16.0	17.1	17.5	14.8	15.9	15.2	16.2	16.6
4H 2H	13.8	15.0	14.1	15.4	15.7	14.0	15.3	14.3	15.6	15.9
3H	15.1	16.2	15.5	16.5	16.9	15.2	16.3	15.6	16.7	17.0
4H	15.6	16.6	16.0	17.0	17.4	15.6	16.6	16.0	17.0	17.4
6H	16.1	17.0	16.6	17.4	17.9	15.7	16.6	16.2	17.0	17.5
8H	16.4	17.3	16.9	17.7	18.1	15.7	16.6	16.2	17.0	17.5
12H	16.7	17.5	17.2	17.9	18.4	15.7	16.5	16.2	16.9	17.4
8H 4H	15.7	16.6	16.2	17.0	17.5	15.7	16.6	16.2	17.0	17.5
6H	16.5	17.2	17.0	17.7	18.2	16.1	16.7	16.5	17.2	17.7
8H	16.9	17.5	17.4	18.0	18.5	16.2	16.8	16.7	17.3	17.8
12H	17.4	17.9	17.9	18.4	18.9	16.2	16.7	16.7	17.3	17.8
12H 4H	15.7	16.5	16.2	17.0	17.4	15.8	16.5	16.2	17.0	17.4
6H	16.5	17.2	17.1	17.6	18.2	16.1	16.7	16.6	17.2	17.8
8H	17.0	17.6	17.6	18.1	18.6	16.3	16.8	16.8	17.3	17.9
Variations with the observer position at spacings:										
S = 1.0H	+ 0.2 / - 0.3					+ 0.2 / - 0.3				
1.5H	+ 0.2 / - 0.4					+ 0.3 / - 0.6				
2.0H	+ 0.3 / - 0.3					+ 0.3 / - 0.6				

CIE Pub.117 Corrected 501.7 lm Total Lamp Luminous Flux.(8log(F/F0) = -2.4)

C Range: 0 - 360DEG  
C Interval: 15.0DEG  
Test Speed: HIGH  
Temperature:25.4DEG  
Operators:Congren Xie  
Test Date:2021-05-18

Checker: Congren Xie

$\gamma$  Range: 0 - 180DEG  
 $\gamma$  Interval: 1.0DEG  
Test System:EVERFINE GO-2000A\_V1 SYSTEM V2.0.291  
Humidity:48.3%  
Test Distance:10.149m [K=1.0000]  
Remarks: standard: GB/T 9468-2008

Assessor: Chunbo Zhou

## UTILIZATION FACTORS TABLE

REFLECTANCE										
Ceiling	0.8	0.8	0.8	0.7	0.7	0.7	0.5	0.5	0.5	0
Walls	0.7	0.5	0.3	0.7	0.5	0.3	0.7	0.5	0.3	0
Working plane	0.2	0.2	0.2	0.2	0.2	0.2	0.2	0.2	0.2	0
ROOM INDEX	UTILIZATION FACTORS (PERCENT) $k(RI) \times RCR = 5$									
$k = 0.60$	57	45	38	56	45	38	55	44	38	32
0.80	67	55	48	66	55	48	64	54	47	40
1.00	75	64	57	74	63	56	72	65	56	49
1.25	82	72	65	81	71	64	78	69	63	56
1.50	87	77	70	85	76	70	82	74	68	61
2.00	94	85	79	92	84	78	88	82	76	68
2.50	98	90	84	96	88	83	91	85	81	72
3.00	101	94	88	99	92	87	94	89	85	76
4.00	105	99	94	103	97	93	98	93	90	80
5.00	108	102	98	105	100	96	100	96	93	83
ROOM INDEX	UF (total)									Direct
According to DIN EN 13032-2 2004			Suspended					SHRNOM = 1.25		

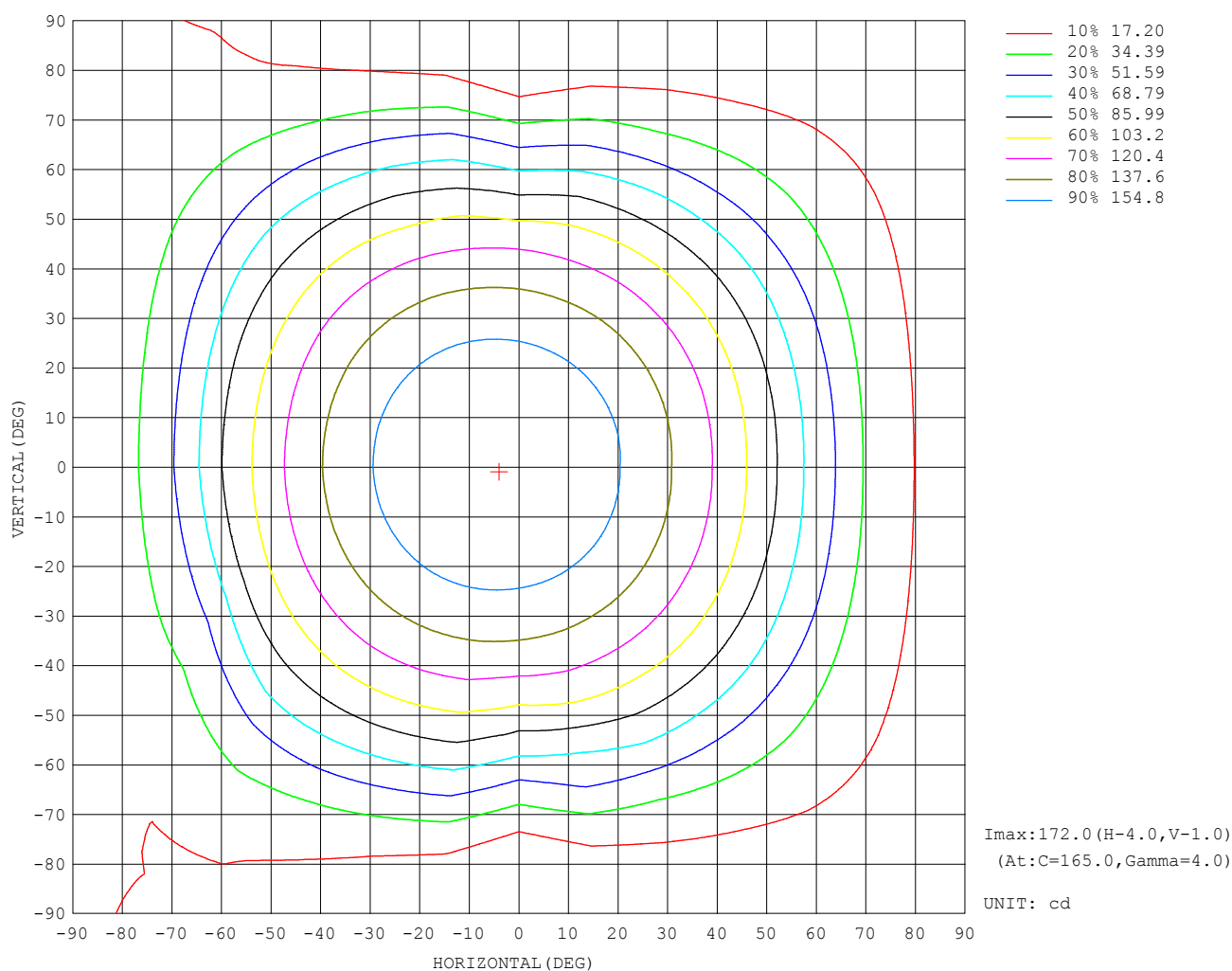
C Range: 0 - 360DEG  
 C Interval: 15.0DEG  
 Test Speed: HIGH  
 Temperature: 25.4DEG  
 Operators: Congren Xie  
 Test Date: 2021-05-18

Checker: Congren Xie

$\gamma$  Range: 0 - 180DEG  
 $\gamma$  Interval: 1.0DEG  
 Test System: EVERFINE GO-2000A\_V1 SYSTEM V2.0.291  
 Humidity: 48.3%  
 Test Distance: 10.149m [K=1.0000]  
 Remarks: standard: GB/T 9468-2008

Assessor: Chunbo Zhou

## ISOCANDELA DIAGRAM



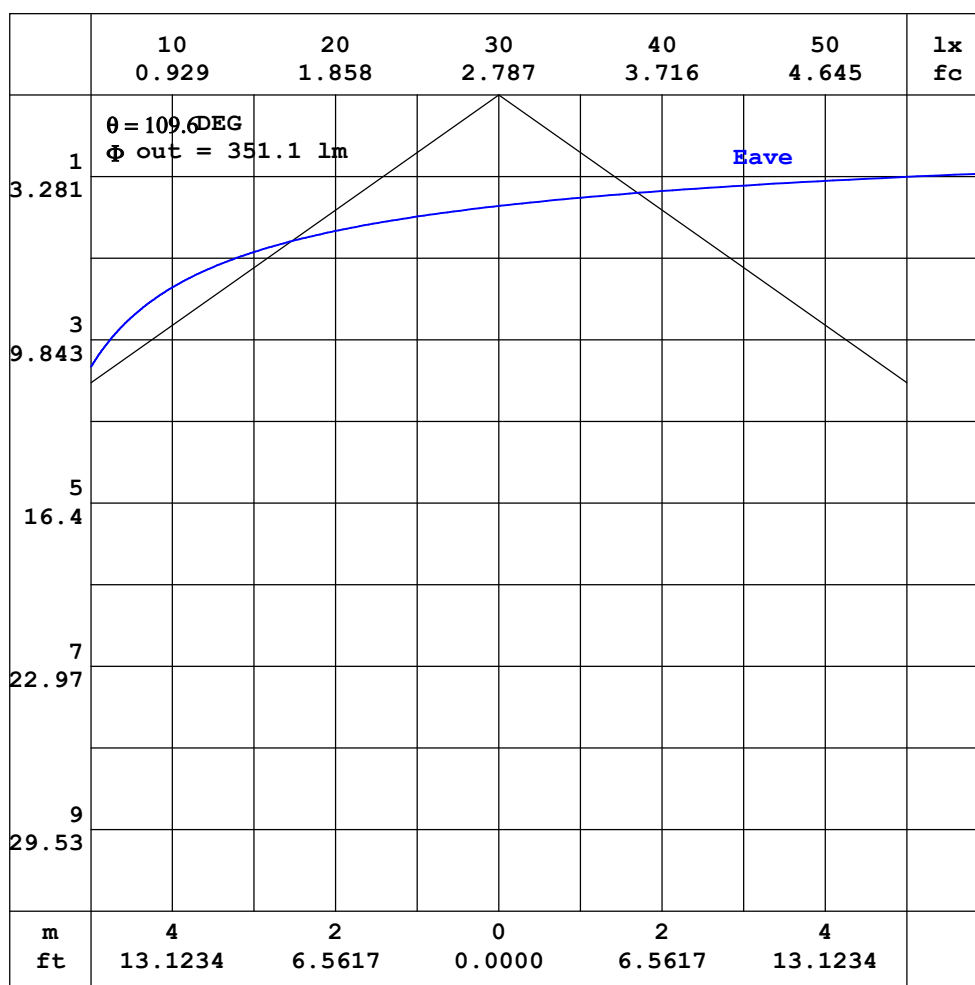
C Range: 0 - 360DEG  
C Interval: 15.0DEG  
Test Speed: HIGH  
Temperature:25.4DEG  
Operators:Congren Xie  
Test Date:2021-05-18

Checker: Congren Xie

$\gamma$  Range: 0 - 180DEG  
 $\gamma$  Interval: 1.0DEG  
Test System:EVERFINE GO-2000A\_V1 SYSTEM V2.0.291  
Humidity:48.3%  
Test Distance:10.149m [K=1.0000]  
Remarks: standard: GB/T 9468-2008

Assessor: Chunbo Zhou

## AAI CURVES



Note: The Curves indicate the illuminated area and the average illumination when the luminaire is at different distance.

C Range: 0 - 360DEG  
 C Interval: 15.0DEG  
 Test Speed: HIGH  
 Temperature: 25.4DEG  
 Operators: Congren Xie  
 Test Date: 2021-05-18

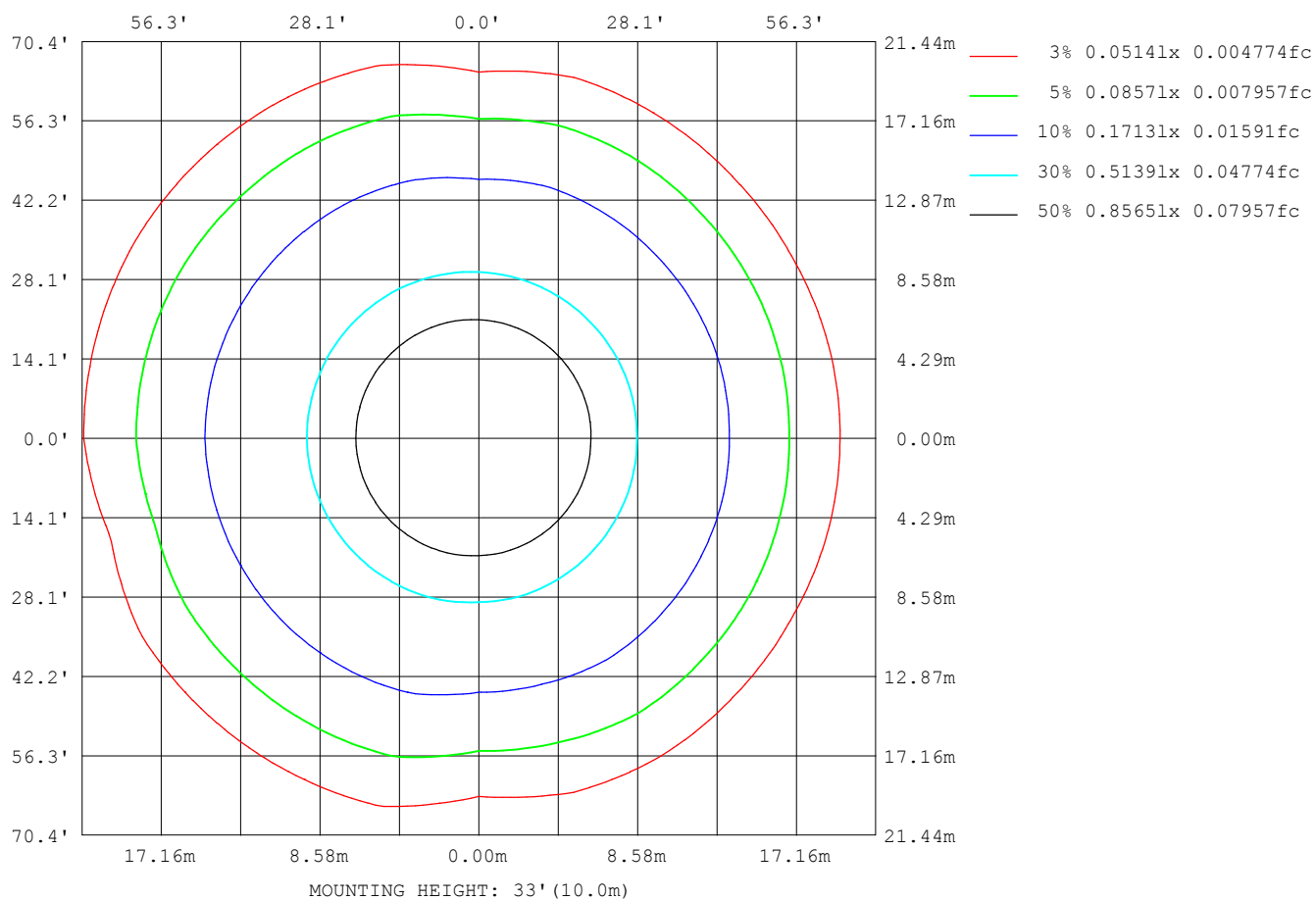
$\gamma$  Range: 0 - 180DEG  
 $\gamma$  Interval: 1.0DEG  
 Test System: EVERFINE GO-2000A\_V1 SYSTEM V2.0.291  
 Humidity: 48.3%  
 Test Distance: 10.149m [K=1.0000]  
 Remarks: standard: GB/T 9468-2008

Checker: Congren Xie

Assessor: Chunbo Zhou



## ISOLUX DIAGRAM



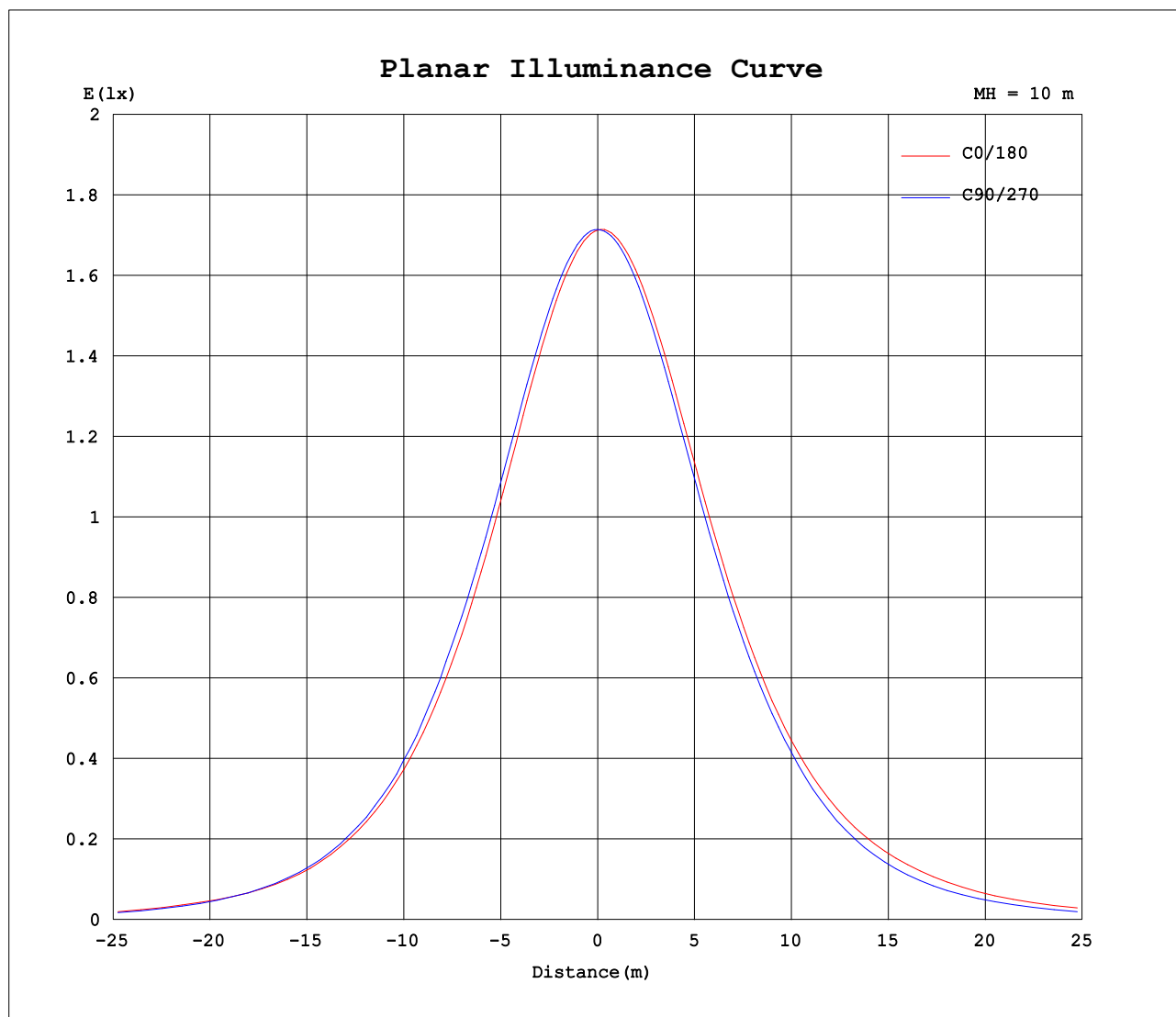
C Range: 0 - 360DEG  
C Interval: 15.0DEG  
Test Speed: HIGH  
Temperature: 25.4DEG  
Operators: Congren Xie  
Test Date: 2021-05-18

Checker: Congren Xie

$\gamma$  Range: 0 - 180DEG  
 $\gamma$  Interval: 1.0DEG  
Test System: EVERFINE GO-2000A\_V1 SYSTEM V2.0.291  
Humidity: 48.3%  
Test Distance: 10.149m [K=1.0000]  
Remarks: standard: GB/T 9468-2008

Assessor: Chunbo Zhou

## Planar Illuminance Curve



C Range: 0 - 360DEG  
C Interval: 15.0DEG  
Test Speed: HIGH  
Temperature: 25.4DEG  
Operators: Congren Xie  
Test Date: 2021-05-18

Checker: Congren Xie

$\gamma$  Range: 0 - 180DEG  
 $\gamma$  Interval: 1.0DEG  
Test System: EVERFINE GO-2000A\_V1 SYSTEM V2.0.291  
Humidity: 48.3%  
Test Distance: 10.149m [K=1.0000]  
Remarks: standard: GB/T 9468-2008

Assessor: Chunbo Zhou

## LUMINOUS DISTRIBUTION INTENSITY DATA

Table--1

UNIT: cd

C (DEG) γ (DEG)	0	15	30	45	60	75	90	105	120	135	150	165	180	195	210	225	240	255	270
0	171	171	171	171	172	171	171	171	171	171	171	171	171	171	171	171	172	171	171
5	169	169	170	170	170	170	171	171	171	171	172	172	172	172	172	172	171	171	171
10	166	166	166	167	167	168	169	169	170	170	171	171	171	171	171	171	170	170	169
15	161	162	162	163	163	164	165	166	167	168	168	169	169	169	169	168	168	167	166
20	155	156	156	157	158	159	160	161	162	164	164	165	166	165	165	164	164	162	161
25	148	148	149	150	151	153	154	155	157	158	159	160	161	160	160	159	158	157	155
30	139	140	140	142	143	145	146	148	150	151	152	153	154	154	153	153	151	150	148
35	129	130	130	132	134	136	137	139	141	143	144	145	146	146	145	144	143	141	139
40	118	119	119	121	123	125	126	129	131	133	134	136	137	137	136	135	134	131	129
45	106	106	107	109	111	113	112	117	120	122	123	125	126	126	125	124	123	120	118
50	92.0	92.4	93.2	95.0	96.8	97.5	96.0	104	107	109	110	112	113	113	113	112	110	108	102
55	76.7	77.6	78.6	79.9	82.2	80.3	79.5	90.3	92.4	94.5	96.2	98.2	100	99.9	99.1	97.9	96.2	93.3	85.3
60	61.5	61.8	62.8	64.1	66.5	64.1	62.6	74.9	76.8	78.8	81.1	80.6	85.6	85.4	84.4	82.6	81.0	78.1	67.6
65	48.4	48.7	48.0	48.4	50.0	52.4	45.0	58.5	60.3	62.4	64.3	58.6	66.9	67.3	67.7	66.4	64.7	61.6	49.3
70	32.6	33.6	34.9	34.5	34.2	36.1	27.7	41.4	43.5	45.5	46.6	42.4	50.4	50.6	50.2	49.3	47.7	44.7	31.7
75	22.7	22.6	22.4	23.0	21.7	21.5	13.3	25.7	28.4	30.4	33.7	31.4	38.5	38.2	36.6	34.1	31.9	28.5	16.2
80	16.9	17.0	16.4	14.9	13.3	11.3	3.54	13.9	17.1	21.0	23.9	22.0	27.6	27.3	25.7	22.9	19.3	15.8	5.36
85	10.9	11.0	10.6	9.82	7.86	5.44	0.18	6.49	10.2	13.9	17.2	17.2	21.1	20.8	18.9	15.5	11.5	7.72	0.16
90	8.35	8.34	8.00	6.97	5.24	2.51	0.04	2.88	7.63	12.0	15.4	16.1	18.7	18.1	16.3	12.8	8.36	3.76	0.04
95	9.83	9.97	9.90	9.20	7.27	1.63	0.07	1.75	7.70	11.4	13.8	14.2	15.5	15.2	13.9	11.6	8.25	2.28	0.06
100	11.8	12.1	11.8	10.1	3.52	0.44	0.08	0.25	3.79	11.3	13.6	13.8	14.6	14.5	13.6	11.5	4.18	0.48	0.13
105	10.0	9.53	7.11	3.59	1.07	0.38	0.08	0.27	1.04	4.34	9.48	12.1	13.3	12.6	9.60	4.30	1.09	0.27	0.14
110	4.88	4.49	2.94	1.36	0.52	0.32	0.17	0.30	0.36	1.79	3.88	5.38	6.16	5.34	3.77	1.71	0.45	0.27	0.17
115	2.45	2.18	1.41	0.60	0.36	0.27	0.20	0.34	0.36	0.51	1.67	2.78	3.20	2.81	1.56	0.37	0.36	0.29	0.22
120	1.50	1.28	0.88	0.50	0.35	0.33	0.29	0.38	0.37	0.44	0.47	0.68	0.96	0.68	0.40	0.38	0.39	0.31	0.27
125	0.90	0.79	0.53	0.45	0.38	0.38	0.32	0.41	0.38	0.47	0.46	0.49	0.43	0.43	0.42	0.39	0.42	0.33	0.33
130	0.65	0.55	0.52	0.46	0.38	0.43	0.37	0.46	0.43	0.48	0.47	0.50	0.45	0.43	0.45	0.39	0.46	0.37	0.39
135	0.55	0.55	0.52	0.49	0.46	0.47	0.42	0.49	0.49	0.51	0.49	0.51	0.46	0.44	0.47	0.47	0.49	0.40	0.43
140	0.57	0.56	0.53	0.53	0.52	0.52	0.47	0.53	0.53	0.54	0.50	0.52	0.47	0.44	0.51	0.48	0.51	0.48	0.48
145	0.59	0.59	0.54	0.56	0.57	0.60	0.57	0.56	0.56	0.56	0.52	0.55	0.49	0.49	0.54	0.49	0.55	0.49	0.56
150	0.60	0.61	0.61	0.60	0.58	0.63	0.59	0.59	0.60	0.61	0.58	0.59	0.53	0.51	0.56	0.55	0.58	0.59	0.60
155	0.61	0.64	0.61	0.64	0.60	0.64	0.60	0.62	0.59	0.61	0.58	0.62	0.56	0.53	0.58	0.60	0.60	0.60	0.62
160	0.62	0.65	0.61	0.66	0.60	0.66	0.60	0.64	0.60	0.63	0.59	0.64	0.60	0.59	0.61	0.60	0.62	0.60	0.65
165	0.67	0.68	0.65	0.68	0.63	0.68	0.61	0.66	0.60	0.65	0.60	0.66	0.63	0.60	0.63	0.60	0.65	0.61	0.67
170	0.68	0.69	0.68	0.69	0.68	0.69	0.66	0.68	0.63	0.68	0.61	0.68	0.66	0.60	0.65	0.60	0.68	0.63	0.69
175	0.70	0.70	0.69	0.70	0.70	0.69	0.69	0.71	0.68	0.69	0.68	0.70	0.70	0.65	0.69	0.67	0.70	0.68	0.70
180	0.70	0.71	0.70	0.70	0.70	0.70	0.69	0.70	0.70	0.70	0.70	0.70	0.70	0.70	0.71	0.70	0.70	0.70	0.70

C Range: 0 - 360DEG  
C Interval: 15.0DEG  
Test Speed: HIGH  
Temperature:25.4DEG  
Operators:Congren Xie  
Test Date:2021-05-18

γ Range: 0 - 180DEG  
γ Interval: 1.0DEG  
Test System:EVERFINE GO-2000A\_V1 SYSTEM V2.0.291  
Humidity:48.3%  
Test Distance:10.149m [K=1.0000]  
Remarks: standard: GB/T 9468-2008

Checker: Congren Xie

Assessor: Chunbo Zhou

## LUMINOUS DISTRIBUTION INTENSITY DATA

Table--2

UNIT: cd

C (DEG) γ (DEG)	285	300	315	330	345													
0	171	171	171	171	171													
5	171	170	170	170	170													
10	168	168	167	167	166													
15	165	164	163	162	162													
20	160	159	158	157	156													
25	154	152	151	149	149													
30	146	144	142	141	140													
35	137	135	133	131	130													
40	127	124	122	120	119													
45	115	112	110	108	107													
50	102	98.8	96.1	94.3	93.2													
55	87.3	84.0	81.1	79.6	78.2													
60	70.2	68.1	65.2	63.5	62.3													
65	53.7	51.4	49.1	48.6	49.0													
70	36.7	35.4	35.1	35.4	34.0													
75	22.8	22.6	23.3	22.7	23.0													
80	11.6	13.7	14.9	16.2	16.9													
85	5.69	7.93	9.47	10.4	10.8													
90	2.86	5.84	7.28	8.00	8.29													
95	1.61	7.36	9.39	9.80	9.77													
100	0.36	3.32	9.45	11.4	11.7													
105	0.28	0.98	3.60	6.80	9.27													
110	0.28	0.37	1.54	3.00	4.43													
115	0.25	0.28	0.69	1.45	2.18													
120	0.25	0.29	0.46	0.77	1.28													
125	0.30	0.34	0.34	0.58	0.82													
130	0.37	0.39	0.36	0.43	0.51													
135	0.39	0.44	0.38	0.46	0.48													
140	0.46	0.49	0.48	0.49	0.51													
145	0.60	0.55	0.53	0.54	0.54													
150	0.59	0.63	0.58	0.58	0.60													
155	0.60	0.64	0.60	0.60	0.61													
160	0.60	0.65	0.61	0.65	0.61													
165	0.63	0.67	0.63	0.68	0.66													
170	0.67	0.69	0.67	0.69	0.68													
175	0.69	0.69	0.69	0.70	0.68													
180	0.70	0.70	0.71	0.70	0.69													

C Range: 0 - 360DEG  
 C Interval: 15.0DEG  
 Test Speed: HIGH  
 Temperature:25.4DEG  
 Operators:Congren Xie  
 Test Date:2021-05-18

Checker: Congren Xie

γ Range: 0 - 180DEG  
 γ Interval: 1.0DEG  
 Test System:EVERFINE GO-2000A\_V1 SYSTEM V2.0.291  
 Humidity:48.3%  
 Test Distance:10.149m [K=1.0000]  
 Remarks: standard: GB/T 9468-2008

Assessor: Chunbo Zhou