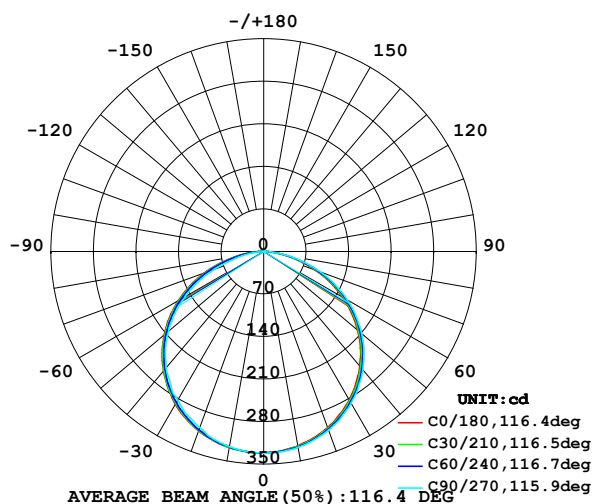


LUMINAIRE PHOTOMETRIC TEST REPORT

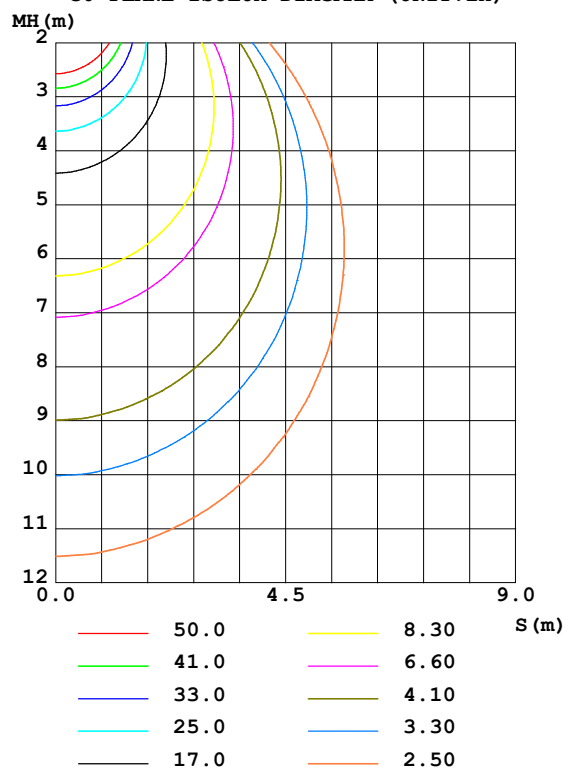
Test:U:12.00V I:0.8370A P:10.04W PF:1.000 Lamp Flux:1063.78x1 lm		
NAME: LED Soft light bar	SUR.:0.1m*1.0m	SERIAL No.:

DATA OF LAMP		PHOTOMETRIC DATA Eff: 98.56 lm/W			
MODEL	EKF4296HL90	I _{max} (cd)	332.0	S/MH (C0/180)	1.30
NOMINAL POWER(W)	/	LOR(%)	93.1	S/MH (C90/270)	1.28
RATED VOLTAGE(V)	12	TOTAL FLUX(lm)	989.96	η UP,DN(C0-180)	0.2,46.6
NOMINAL FLUX(lm)	1063.78	CIE CLASS	DIRECT	η UP,DN(C180-360)	0.2,46.0
LAMPS INSIDE	1	η up (%)	0.4	CIBSE SHR NOM	1.25
TEST VOLTAGE(V)	12	η down (%)	92.6	CIBSE SHR MAX	1.35

LUMINOUS INTENSITY DISTRIBUTION DIAGRAM



C0 PLANE ISOLUX DIAGRAM (UNIT:lx)



C Range: 0 - 360DEG
 C Interval: 15.0DEG
 Test Speed: HIGH
 Temperature: 24.1DEG
 Operators: Bo Zou
 Test Date: 2021-05-17

γ Range: 0 - 180DEG
 γ Interval: 1.0DEG
 Test System: EVERFINE GO-2000A_V1 SYSTEM V2.0.291
 Humidity: 33.6%
 Test Distance: 10.149m [K=1.0000]
 Remarks: standard: GB/T 9468-2008

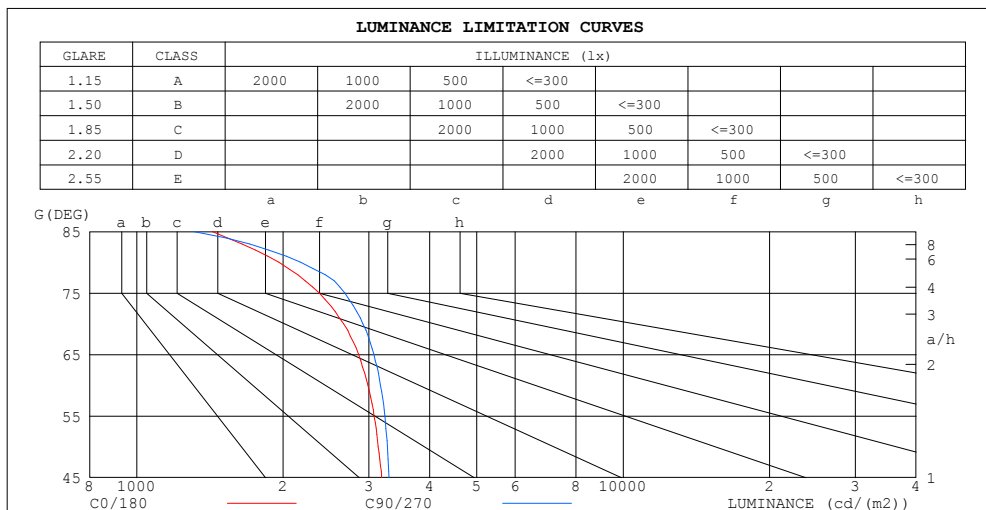
Checker: Bo Zou

Assessor: Chunbo Zou

ZONAL FLUX DIAGRAM AND LUMINANCE LIMITATION CURVES

ZONAL FLUX DIAGRAM:

γ	C0	C45	C90	C135	C180	C225	C270	C315	γ	Φ zone	Φ total	%lum, lamp
10	324.4	326.5	327.2	328.1	327.9	327.1	326.4	325.1	0- 10	31.41	31.41	3.17,2.95
20	308.1	310.2	312.6	314.0	314.0	312.5	307.9	309.0	10- 20	90.41	121.8	12.3,11.5
30	282.1	284.9	288.3	290.3	290.6	288.2	282.7	283.0	20- 30	138.4	260.2	26.3,24.5
40	246.0	250.2	254.0	256.4	256.9	253.9	249.8	247.2	30- 40	169.1	429.3	43.4,40.4
50	201.7	206.3	210.7	213.4	213.9	210.7	204.4	202.7	40- 50	178.1	607.4	61.4,57.1
60	149.4	154.0	158.5	161.7	162.5	158.8	149.4	150.3	50- 60	163.4	770.9	77.9,72.5
70	90.99	95.52	99.76	103.2	104.0	99.71	85.72	91.44	60- 70	125.6	896.5	90.6,84.3
80	34.02	36.82	37.74	43.43	44.53	40.37	28.12	33.87	70- 80	70.71	967.2	97.7,90.9
90	1.671	1.889	0.0455	4.207	4.903	3.068	0.0130	1.645	80- 90	18.14	985.3	99.5,92.6
100	0.2511	0.2269	0.1230	0.3239	0.2461	0.1995	0.1490	0.1740	90-100	0.7968	986.1	99.6,92.7
110	0.3561	0.4214	0.3432	0.5313	0.3888	0.3304	0.3499	0.3170	100-110	0.3158	986.5	99.6,92.7
120	0.5633	0.6156	0.5570	0.7449	0.5831	0.5435	0.5700	0.5243	110-120	0.4983	987.0	99.7,92.8
130	0.7708	0.8293	0.7683	0.9458	0.7903	0.7705	0.7708	0.7643	120-130	0.6320	987.6	99.8,92.8
140	0.9584	1.004	0.9584	1.114	0.9652	0.9129	0.9457	0.8873	130-140	0.6915	988.3	99.8,92.9
150	1.082	1.140	1.082	1.244	1.108	1.056	1.101	1.036	140-150	0.6557	988.9	99.9,93
160	1.185	1.250	1.185	1.303	1.237	1.179	1.218	1.159	150-160	0.5407	989.5	100,93
170	1.282	1.318	1.287	1.306	1.305	1.285	1.298	1.278	160-170	0.3581	989.8	100,93
180	1.328	1.328	1.308	1.302	1.328	1.315	1.315	1.302	170-180	0.1250	990.0	100,93.1
DEG	LUMINOUS INTENSITY:cd									UNIT:lm		



C Range: 0 - 360DEG
 C Interval: 15.0DEG
 Test Speed: HIGH
 Temperature:24.1DEG
 Operators:Bo Zou
 Test Date:2021-05-17

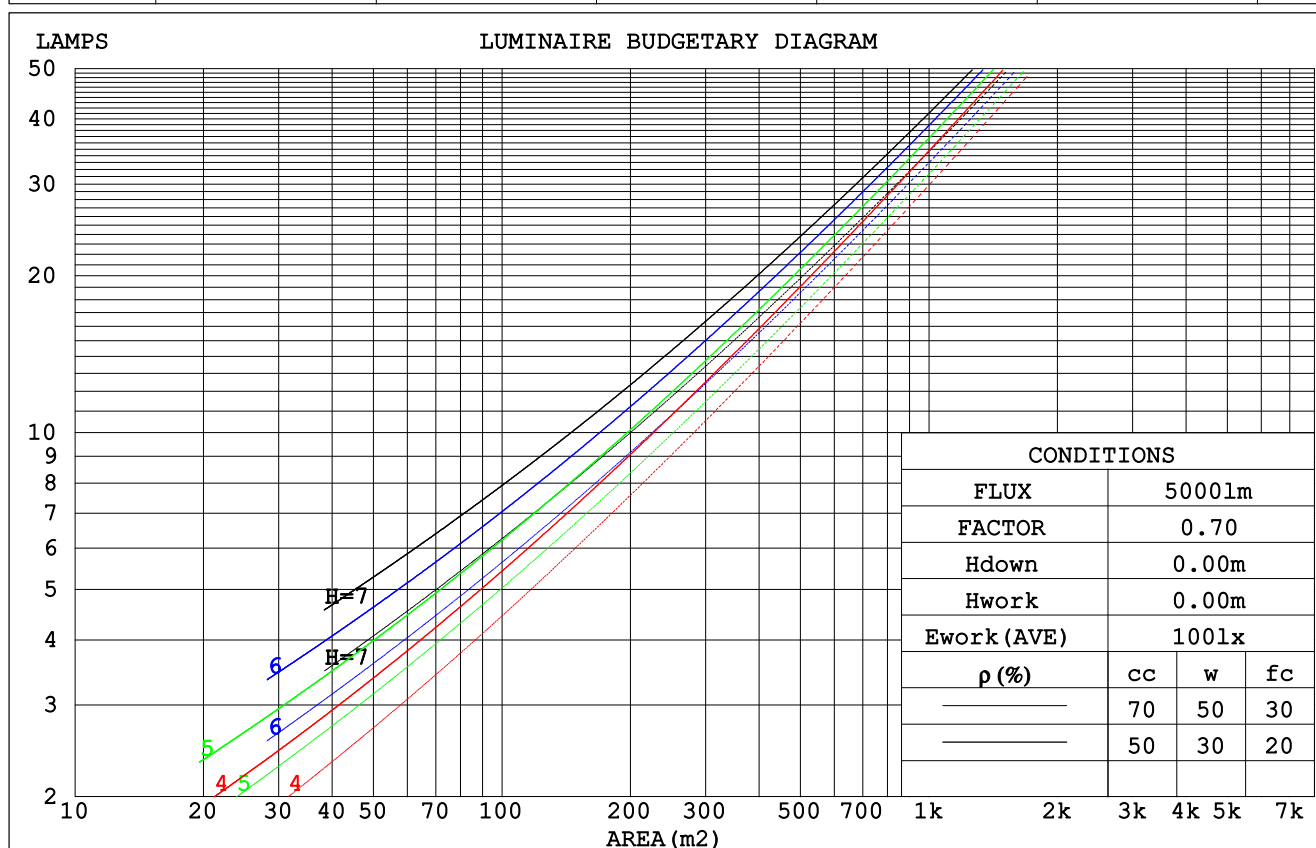
γ Range: 0 - 180DEG
 γ Interval: 1.0DEG
 Test System:EVERFINE GO-2000A_V1 SYSTEM V2.0.291
 Humidity:33.6%
 Test Distance:10.149m [K=1.0000]
 Remarks: standard: GB/T 9468-2008

Checker: Bo Zou

Assessor: Chunbo Zou

CU AND LUMINAIRE BUDGETARY ESTIMATE DIAGRAM

pcc	80%			70%			50%			30%			10%			0
pw	50%	30%	10%	50%	30%	10%	50%	30%	10%	50%	30%	10%	50%	30%	10%	0
pfc	20%			20%			20%			20%			20%			0
RCR	RCR:Room Cavity Ratio						Coefficients of Utilization(CU)									
0.0	1.11	1.11	1.11	1.08	1.08	1.08	1.03	1.03	1.03	.99	.99	.99	.95	.95	.95	.93
1.0	.96	.92	.89	.94	.91	.87	.90	.87	.84	.87	.84	.82	.83	.81	.79	.77
2.0	.84	.77	.72	.82	.76	.71	.79	.74	.69	.76	.71	.68	.73	.69	.66	.64
3.0	.73	.66	.60	.72	.65	.59	.69	.63	.58	.66	.61	.57	.64	.60	.56	.54
4.0	.65	.57	.50	.64	.56	.50	.61	.54	.49	.59	.53	.48	.57	.52	.48	.46
5.0	.58	.49	.43	.57	.49	.43	.55	.48	.42	.53	.47	.42	.51	.46	.41	.39
6.0	.52	.44	.38	.51	.43	.37	.49	.42	.37	.48	.41	.37	.46	.41	.36	.34
7.0	.47	.39	.33	.46	.38	.33	.45	.38	.33	.43	.37	.32	.42	.36	.32	.30
8.0	.43	.35	.29	.42	.35	.29	.41	.34	.29	.40	.33	.29	.39	.33	.29	.27
9.0	.39	.32	.26	.39	.31	.26	.38	.31	.26	.37	.30	.26	.36	.30	.26	.24
10.0	.36	.29	.24	.36	.29	.24	.35	.28	.24	.34	.28	.24	.33	.27	.23	.22



C Range: 0 - 360DEG
 C Interval: 15.0DEG
 Test Speed: HIGH
 Temperature: 24.1DEG
 Operators: Bo Zou
 Test Date: 2021-05-17

γ Range: 0 - 180DEG
 γ Interval: 1.0DEG
 Test System: EVERFINE GO-2000A_V1 SYSTEM V2.0.291
 Humidity: 33.6%
 Test Distance: 10.149m [K=1.0000]
 Remarks: standard: GB/T 9468-2008

Checker: Bo Zou

Assessor: Chunbo Zou

WEC AND CCEC

pcc	80%			70%			50%			30%			10%			0
pw	50%	30%	10%	50%	30%	10%	50%	30%	10%	50%	30%	10%	50%	30%	10%	0
pfc	20%			20%			20%			20%			20%			0
RCR	RCR:Room Cavity Ratio						Wall Exitance Coefficients (WEC)									
0.0																
1.0	.290	.165	.052	.284	.162	.051	.271	.155	.050	.259	.150	.048	.249	.144	.046	
2.0	.274	.150	.046	.268	.147	.045	.257	.143	.044	.246	.138	.043	.237	.134	.042	
3.0	.253	.135	.040	.248	.133	.040	.238	.129	.039	.229	.125	.038	.221	.122	.038	
4.0	.234	.121	.036	.229	.120	.035	.220	.117	.035	.212	.114	.034	.205	.111	.034	
5.0	.216	.110	.032	.212	.109	.032	.204	.106	.031	.197	.104	.031	.190	.102	.030	
6.0	.200	.100	.029	.196	.099	.029	.190	.097	.028	.183	.095	.028	.177	.093	.028	
7.0	.186	.092	.026	.183	.091	.026	.177	.089	.026	.171	.088	.025	.165	.086	.025	
8.0	.174	.085	.024	.171	.084	.024	.165	.083	.024	.160	.081	.023	.155	.080	.023	
9.0	.163	.079	.022	.160	.078	.022	.155	.077	.022	.150	.075	.022	.146	.074	.021	
10.0	.153	.073	.020	.151	.073	.020	.146	.072	.020	.142	.070	.020	.138	.069	.020	

pcc	80%			70%			50%			30%			10%			0
pw	50%	30%	10%	50%	30%	10%	50%	30%	10%	50%	30%	10%	50%	30%	10%	0
pfc	20%			20%			20%			20%			20%			0
RCR	RCR:Room Cavity Ratio						Ceiling Cavity Exitance Coefficients (CCEC)									
0.0	.181	.181	.181	.154	.154	.154	.105	.105	.105	.061	.061	.061	.019	.019	.019	
1.0	.171	.149	.128	.147	.128	.110	.100	.088	.076	.058	.051	.044	.018	.016	.014	
2.0	.164	.126	.094	.140	.109	.082	.096	.075	.057	.055	.044	.033	.018	.014	.011	
3.0	.157	.110	.072	.134	.095	.063	.092	.066	.044	.053	.038	.026	.017	.012	.008	
4.0	.150	.097	.057	.129	.084	.050	.088	.059	.035	.051	.034	.021	.016	.011	.007	
5.0	.143	.088	.047	.123	.076	.041	.085	.053	.029	.049	.031	.017	.016	.010	.006	
6.0	.136	.080	.040	.117	.069	.035	.081	.048	.024	.047	.029	.015	.015	.009	.005	
7.0	.130	.074	.034	.112	.064	.030	.077	.045	.021	.045	.026	.013	.014	.009	.004	
8.0	.124	.068	.030	.107	.059	.026	.074	.042	.019	.043	.025	.011	.014	.008	.004	
9.0	.118	.064	.027	.102	.055	.023	.071	.039	.017	.041	.023	.010	.013	.008	.003	
10.0	.113	.060	.024	.097	.052	.021	.067	.036	.015	.039	.022	.009	.013	.007	.003	

C Range: 0 - 360DEG
 C Interval: 15.0DEG
 Test Speed: HIGH
 Temperature:24.1DEG
 Operators:Bo Zou
 Test Date:2021-05-17

γ Range: 0 - 180DEG
 γ Interval: 1.0DEG
 Test System:EVERFINE GO-2000A_V1 SYSTEM V2.0.291
 Humidity:33.6%
 Test Distance:10.149m [K=1.0000]
 Remarks: standard: GB/T 9468-2008

Checker: Bo Zou

Assessor: Chunbo Zou

UGR(Unified Glare Rating) Table

ceiling/cavity	0.7	0.7	0.5	0.5	0.3	0.7	0.7	0.5	0.5	0.3
walls	0.5	0.3	0.5	0.3	0.3	0.5	0.3	0.5	0.3	0.3
working plane	0.2	0.2	0.2	0.2	0.2	0.2	0.2	0.2	0.2	0.2
Room dimensions	Viewed crosswise					Viewed endwise				
x = 2H y = 2H	16.8	18.3	17.0	18.5	18.7	17.0	18.5	17.3	18.7	19.0
3H	18.2	19.7	18.6	19.9	20.1	18.6	20.0	18.9	20.2	20.5
4H	18.8	20.1	19.1	20.4	20.7	19.2	20.5	19.5	20.8	21.1
6H	19.1	20.4	19.5	20.7	21.0	19.6	20.8	19.9	21.1	21.4
8H	19.2	20.4	19.6	20.7	21.0	19.7	20.9	20.0	21.2	21.5
12H	19.2	20.4	19.6	20.7	21.0	19.7	20.9	20.0	21.2	21.5
4H 2H	17.4	18.8	17.7	19.0	19.3	17.6	18.9	17.9	19.2	19.5
3H	19.1	20.2	19.4	20.5	20.9	19.3	20.5	19.7	20.8	21.1
4H	19.7	20.8	20.1	21.1	21.5	20.1	21.1	20.4	21.5	21.8
6H	20.2	21.1	20.6	21.5	21.9	20.6	21.5	21.0	21.9	22.3
8H	20.3	21.2	20.7	21.6	22.0	20.7	21.6	21.1	22.0	22.4
12H	20.4	21.2	20.8	21.6	22.0	20.8	21.6	21.2	22.0	22.4
8H 4H	20.0	20.9	20.4	21.3	21.6	20.3	21.2	20.7	21.6	21.9
6H	20.6	21.3	21.0	21.7	22.2	20.9	21.7	21.4	22.1	22.5
8H	20.8	21.4	21.2	21.8	22.3	21.1	21.8	21.6	22.2	22.7
12H	20.9	21.4	21.4	21.9	22.4	21.3	21.8	21.7	22.3	22.8
12H 4H	20.0	20.8	20.4	21.2	21.6	20.3	21.1	20.7	21.5	21.9
6H	20.6	21.3	21.1	21.7	22.2	21.0	21.6	21.4	22.0	22.5
8H	20.8	21.4	21.3	21.9	22.3	21.2	21.8	21.7	22.2	22.7
Variations with the observer position at spacings:										
S = 1.0H	+ 0.2 / - 0.2					+ 0.1 / - 0.2				
1.5H	+ 0.2 / - 0.3					+ 0.2 / - 0.3				
2.0H	+ 0.2 / - 0.3					+ 0.2 / - 0.3				

CIE Pub.117 Corrected 1064 lm Total Lamp Luminous Flux.(8log(F/F0) = 0.2)

C Range: 0 - 360DEG
 C Interval: 15.0DEG
 Test Speed: HIGH
 Temperature:24.1DEG
 Operators:Bo Zou
 Test Date:2021-05-17

γ Range: 0 - 180DEG
 γ Interval: 1.0DEG
 Test System:EVERFINE GO-2000A_V1 SYSTEM V2.0.291
 Humidity:33.6%
 Test Distance:10.149m [K=1.0000]
 Remarks: standard: GB/T 9468-2008

Checker: Bo Zou

Assessor: Chunbo Zou

UTILIZATION FACTORS TABLE

REFLECTANCE										
Ceiling	0.8	0.8	0.8	0.7	0.7	0.7	0.5	0.5	0.5	0
Walls	0.7	0.5	0.3	0.7	0.5	0.3	0.7	0.5	0.3	0
Working plane	0.2	0.2	0.2	0.2	0.2	0.2	0.2	0.2	0.2	0
ROOM INDEX	UTILIZATION FACTORS (PERCENT) $k(RI) \times RCR = 5$									
$k = 0.60$	53	42	35	52	42	35	51	41	35	29
0.80	62	51	44	61	51	44	60	50	44	37
1.00	70	60	53	69	59	52	67	60	52	45
1.25	77	67	60	75	66	60	73	65	59	52
1.50	81	72	66	80	71	65	77	70	64	57
2.00	88	80	74	86	79	73	83	77	72	64
2.50	92	84	79	90	83	78	86	80	76	68
3.00	95	88	83	93	87	82	89	84	80	72
4.00	99	93	89	96	92	88	92	88	85	77
5.00	101	96	93	99	95	91	94	91	88	79
ROOM INDEX	UF (total)									Direct
According to DIN EN 13032-2 2004			Suspended					SHRNOM = 1.25		

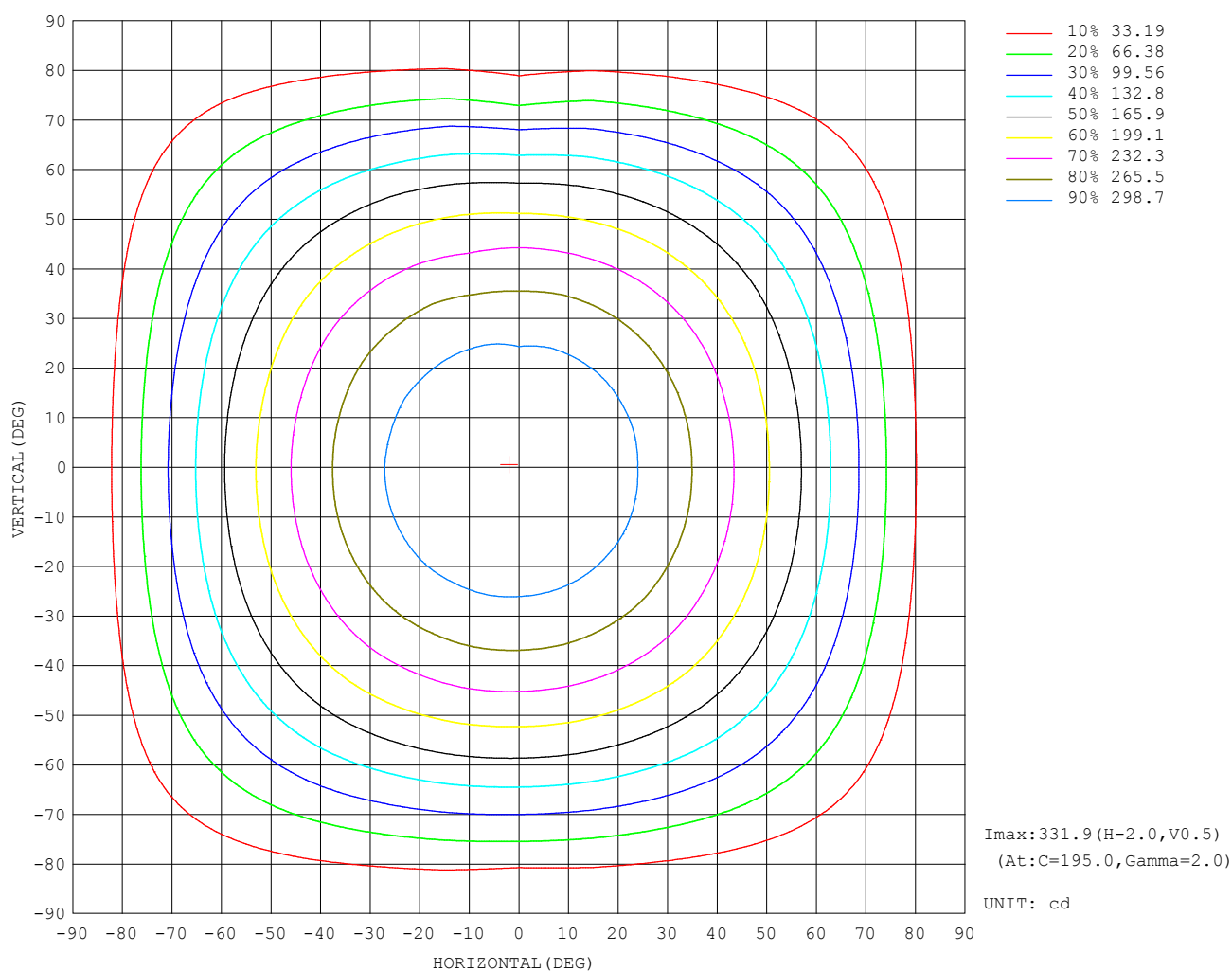
C Range: 0 - 360DEG
 C Interval: 15.0DEG
 Test Speed: HIGH
 Temperature: 24.1DEG
 Operators: Bo Zou
 Test Date: 2021-05-17

Checker: Bo Zou

γ Range: 0 - 180DEG
 γ Interval: 1.0DEG
 Test System: EVERFINE GO-2000A_V1 SYSTEM V2.0.291
 Humidity: 33.6%
 Test Distance: 10.149m [K=1.0000]
 Remarks: standard: GB/T 9468-2008

Assessor: Chunbo Zou

ISOCANDELA DIAGRAM



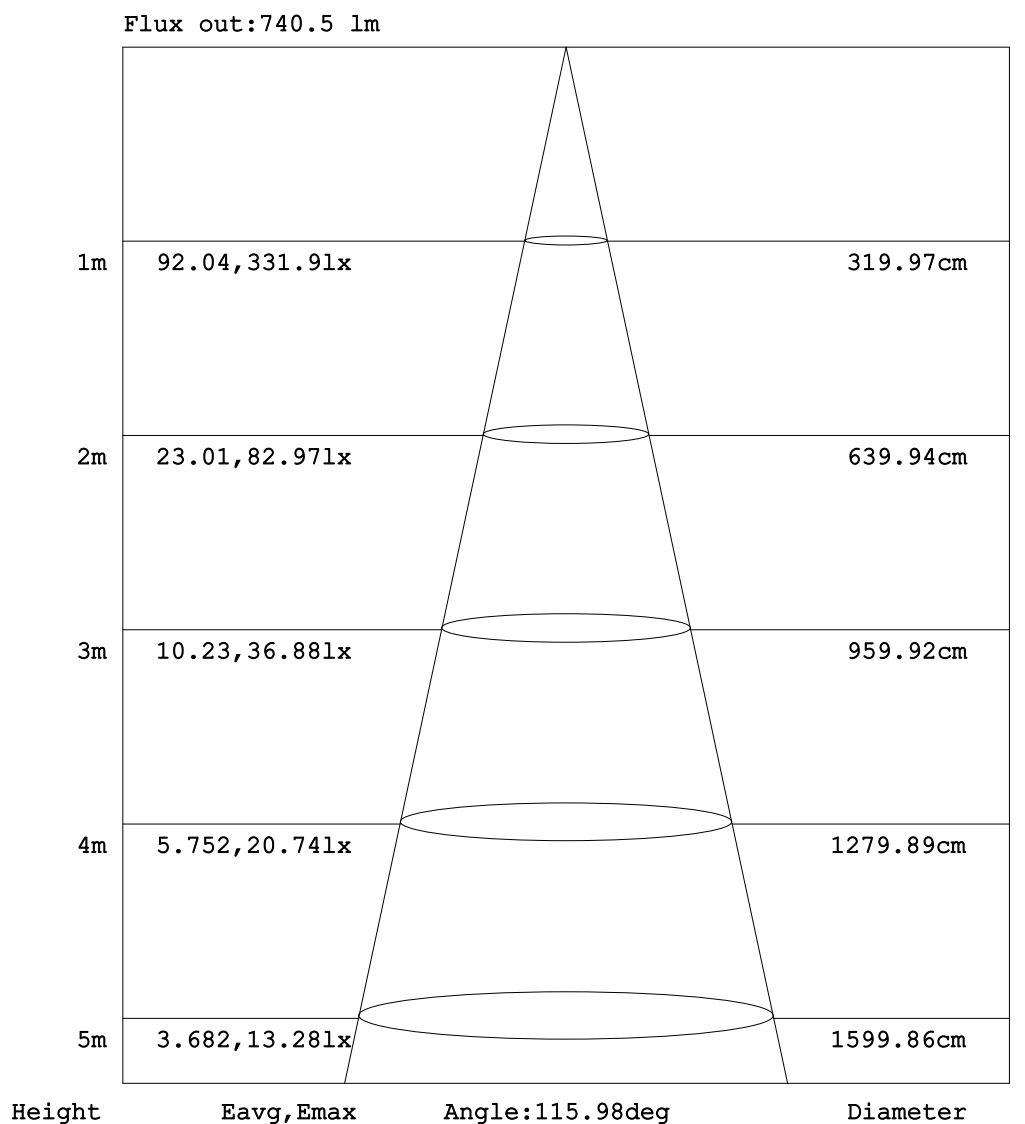
C Range: 0 - 360DEG
C Interval: 15.0DEG
Test Speed: HIGH
Temperature: 24.1DEG
Operators: Bo Zou
Test Date: 2021-05-17

γ Range: 0 - 180DEG
 γ Interval: 1.0DEG
Test System: EVERFINE GO-2000A_V1 SYSTEM V2.0.291
Humidity: 33.6%
Test Distance: 10.149m [K=1.0000]
Remarks: standard: GB/T 9468-2008

Checker: Bo Zou

Assessor: Chunbo Zou

AAI Figure



Note: The Curves indicate the illuminated area and the average illumination when the luminaire is at different distance.

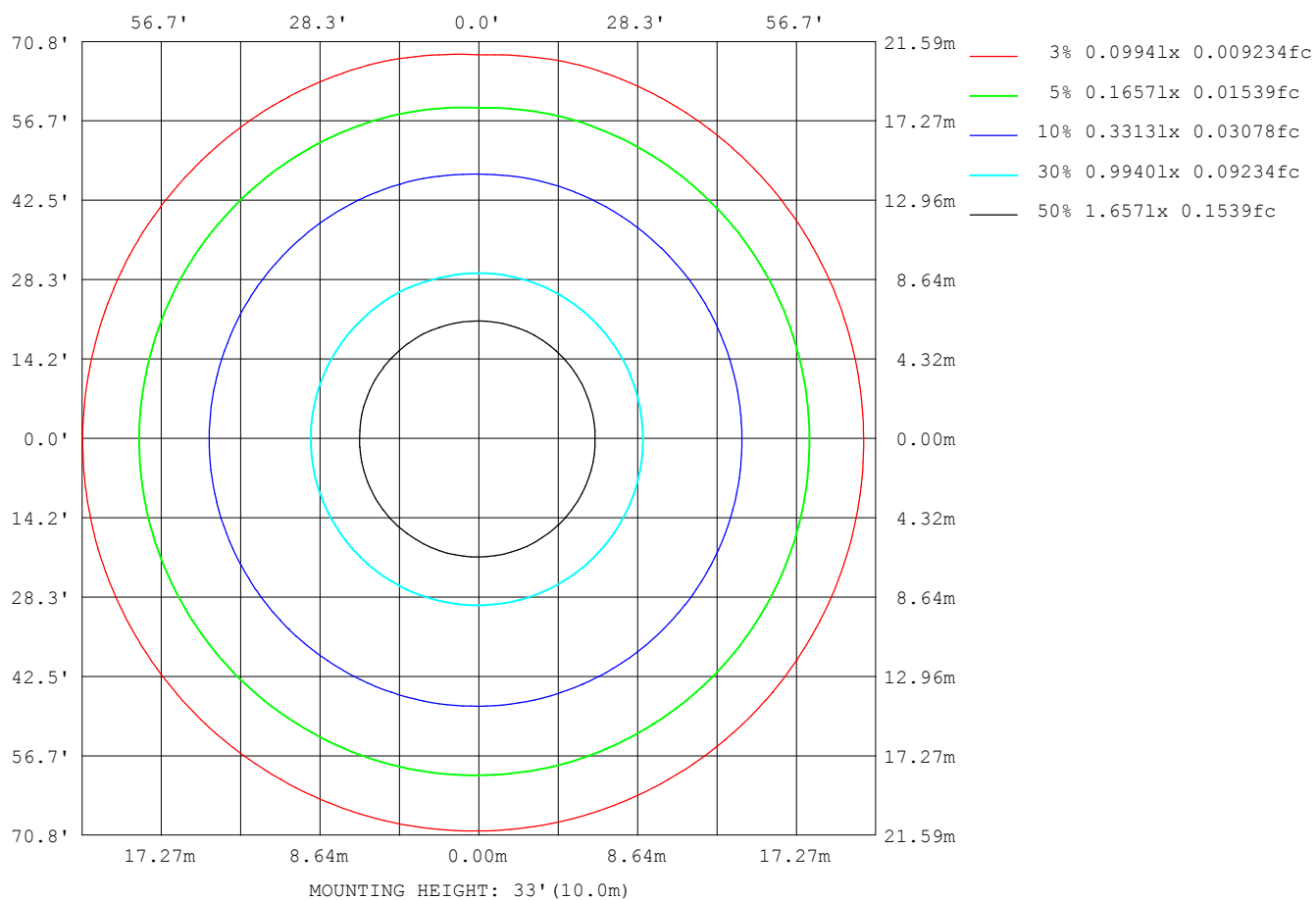
C Range: 0 - 360DEG
 C Interval: 15.0DEG
 Test Speed: HIGH
 Temperature: 24.1DEG
 Operators: Bo Zou
 Test Date: 2021-05-17

γ Range: 0 - 180DEG
 γ Interval: 1.0DEG
 Test System: EVERFINE GO-2000A_V1 SYSTEM V2.0.291
 Humidity: 33.6%
 Test Distance: 10.149m [K=1.0000]
 Remarks: standard: GB/T 9468-2008

Checker: Bo Zou

Assessor: Chunbo Zou

ISOLUX DIAGRAM



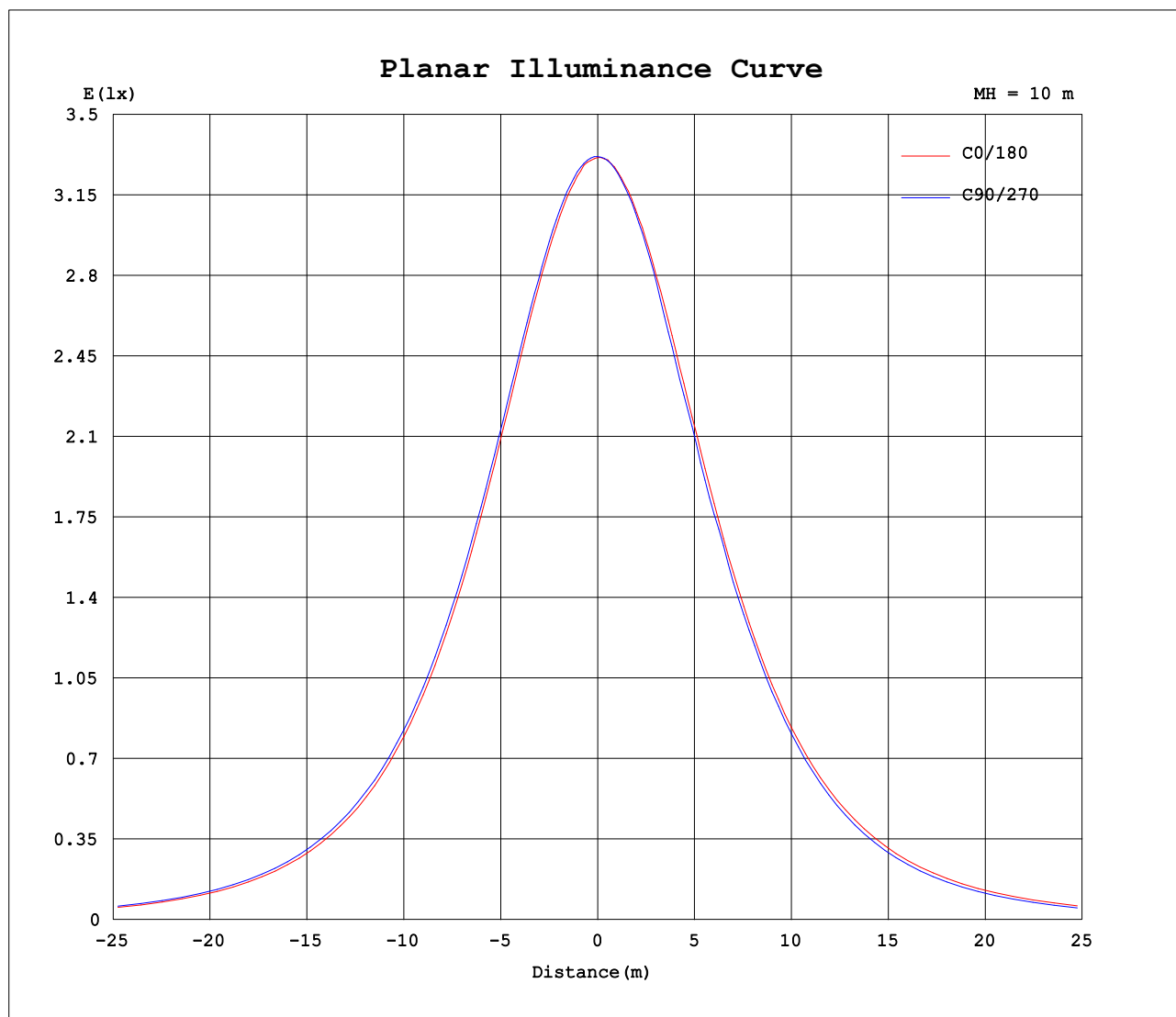
C Range: 0 - 360DEG
C Interval: 15.0DEG
Test Speed: HIGH
Temperature: 24.1DEG
Operators: Bo Zou
Test Date: 2021-05-17

Checker: Bo Zou

γ Range: 0 - 180DEG
 γ Interval: 1.0DEG
Test System: EVERFINE GO-2000A_V1 SYSTEM V2.0.291
Humidity: 33.6%
Test Distance: 10.149m [K=1.0000]
Remarks: standard: GB/T 9468-2008

Assessor: Chunbo Zou

Planar Illuminance Curve



C Range: 0 - 360DEG
C Interval: 15.0DEG
Test Speed: HIGH
Temperature: 24.1DEG
Operators: Bo Zou
Test Date: 2021-05-17

Checker: Bo Zou

γ Range: 0 - 180DEG
 γ Interval: 1.0DEG
Test System: EVERFINE GO-2000A_V1 SYSTEM V2.0.291
Humidity: 33.6%
Test Distance: 10.149m [K=1.0000]
Remarks: standard: GB/T 9468-2008

Assessor: Chunbo Zou

LUMINOUS DISTRIBUTION INTENSITY DATA

Table--1

UNIT: cd

C (DEG) γ (DEG)	0	15	30	45	60	75	90	105	120	135	150	165	180	195	210	225	240	255	270
0	331	332	332	331	332	332	332	332	332	332	331	331	331	332	332	331	332	332	332
5	329	330	330	330	330	331	331	331	331	331	331	331	331	331	330	330	330	330	330
10	324	325	325	327	327	327	327	328	328	328	328	328	328	328	327	327	327	326	326
15	318	318	319	319	320	321	321	322	322	322	322	323	322	322	322	321	321	320	320
20	308	309	310	310	311	312	313	314	314	314	314	314	314	313	313	313	312	311	308
25	296	297	298	299	300	301	302	302	303	304	304	304	303	303	302	302	301	300	297
30	282	283	284	285	286	288	288	289	289	290	290	290	291	290	289	288	287	286	283
35	265	266	267	269	270	272	272	273	274	275	275	275	275	274	274	273	271	268	267
40	246	247	248	250	251	253	254	255	256	256	256	257	257	256	255	254	253	249	250
45	225	226	228	229	231	233	233	235	235	236	236	237	236	236	235	233	232	228	229
50	202	203	204	206	208	210	211	212	212	213	213	214	214	213	212	211	209	207	204
55	176	178	179	181	183	185	186	187	187	189	189	189	189	188	187	186	184	182	179
60	149	151	152	154	156	158	159	160	161	162	162	163	163	161	160	159	157	155	149
65	121	122	123	125	127	129	130	131	132	133	134	134	134	133	132	130	128	126	119
70	91.0	92.5	93.7	95.5	97.1	98.7	99.8	101	102	103	104	104	104	103	102	99.7	97.8	95.6	85.7
75	61.4	62.7	63.7	65.4	66.6	68.5	69.3	70.7	71.5	72.9	73.5	74.0	73.6	72.8	71.6	69.4	67.6	65.2	53.3
80	34.0	35.0	35.6	36.8	37.4	38.8	37.7	41.4	42.3	43.4	44.3	44.8	44.5	43.6	42.5	40.4	38.7	36.5	28.1
85	12.5	13.0	13.1	13.7	14.0	14.8	11.4	16.8	17.7	18.7	19.6	20.2	19.8	19.0	18.0	16.3	14.9	13.3	5.24
90	1.67	1.83	1.82	1.89	1.88	1.90	0.05	2.78	3.53	4.21	4.96	5.37	4.90	4.52	3.98	3.07	2.34	1.42	0.01
95	0.40	0.32	0.32	0.35	0.18	0.15	0.05	0.15	0.41	0.63	1.29	1.71	1.46	1.29	0.92	0.49	0.12	0.06	0.06
100	0.25	0.25	0.24	0.23	0.19	0.21	0.12	0.24	0.23	0.32	0.42	0.49	0.25	0.25	0.27	0.20	0.18	0.10	0.15
105	0.26	0.30	0.26	0.32	0.25	0.31	0.23	0.34	0.34	0.42	0.50	0.53	0.29	0.27	0.32	0.25	0.26	0.18	0.23
110	0.36	0.41	0.35	0.42	0.36	0.41	0.34	0.46	0.48	0.53	0.56	0.64	0.39	0.34	0.40	0.33	0.35	0.30	0.35
115	0.48	0.52	0.47	0.52	0.49	0.51	0.47	0.57	0.55	0.63	0.66	0.74	0.49	0.49	0.51	0.47	0.47	0.46	0.47
120	0.56	0.62	0.57	0.62	0.56	0.62	0.56	0.67	0.65	0.74	0.78	0.85	0.58	0.54	0.60	0.54	0.57	0.52	0.57
125	0.67	0.73	0.66	0.73	0.66	0.73	0.67	0.76	0.77	0.85	0.87	0.95	0.69	0.63	0.69	0.63	0.69	0.63	0.67
130	0.77	0.82	0.78	0.83	0.81	0.83	0.77	0.86	0.87	0.95	0.97	1.05	0.79	0.77	0.80	0.77	0.80	0.77	0.77
135	0.87	0.91	0.87	0.91	0.87	0.91	0.87	0.93	0.96	1.04	1.06	1.13	0.88	0.84	0.87	0.82	0.87	0.82	0.87
140	0.96	0.99	0.95	1.00	0.96	0.99	0.96	0.99	1.01	1.11	1.14	1.20	0.97	0.90	0.97	0.91	0.96	0.89	0.95
145	1.01	1.08	1.01	1.08	1.01	1.08	1.00	1.07	1.08	1.19	1.20	1.28	1.04	0.98	1.04	0.98	1.04	0.96	1.03
150	1.08	1.15	1.08	1.14	1.08	1.15	1.08	1.14	1.15	1.24	1.27	1.33	1.11	1.05	1.11	1.06	1.11	1.04	1.10
155	1.15	1.20	1.16	1.21	1.15	1.20	1.16	1.19	1.17	1.28	1.31	1.39	1.17	1.13	1.18	1.12	1.17	1.09	1.16
160	1.19	1.26	1.20	1.25	1.19	1.24	1.19	1.24	1.19	1.30	1.38	1.39	1.24	1.17	1.24	1.18	1.22	1.17	1.22
165	1.28	1.30	1.27	1.29	1.26	1.30	1.26	1.28	1.25	1.30	1.38	1.40	1.28	1.24	1.30	1.24	1.27	1.21	1.27
170	1.28	1.33	1.29	1.32	1.28	1.31	1.29	1.30	1.27	1.31	1.39	1.40	1.31	1.29	1.33	1.29	1.30	1.27	1.30
175	1.31	1.34	1.29	1.32	1.29	1.31	1.29	1.31	1.28	1.31	1.39	1.39	1.32	1.30	1.34	1.29	1.31	1.28	1.31
180	1.33	1.35	1.31	1.33	1.31	1.31	1.31	1.31	1.30	1.30	1.38	1.38	1.33	1.34	1.34	1.31	1.31	1.30	1.31

C Range: 0 - 360DEG
C Interval: 15.0DEG
Test Speed: HIGH
Temperature:24.1DEG
Operators:Bo Zou
Test Date:2021-05-17

γ Range: 0 - 180DEG
γ Interval: 1.0DEG
Test System:EVERFINE GO-2000A_V1 SYSTEM V2.0.291
Humidity:33.6%
Test Distance:10.149m [K=1.0000]
Remarks: standard: GB/T 9468-2008

Checker: Bo Zou

Assessor: Chunbo Zou

LUMINOUS DISTRIBUTION INTENSITY DATA

Table--2

UNIT: cd

C (DEG) γ (DEG)	285	300	315	330	345													
0	332	332	332	331	331													
5	330	330	330	329	329													
10	326	325	325	325	325													
15	317	319	318	318	317													
20	308	309	309	309	308													
25	298	298	297	297	296													
30	284	284	283	282	282													
35	268	267	266	266	265													
40	250	248	247	247	246													
45	228	227	226	226	225													
50	205	204	203	202	202													
55	179	179	177	177	176													
60	152	151	150	150	149													
65	123	122	121	121	121													
70	92.8	92.3	91.4	91.3	90.9													
75	62.7	62.4	61.7	61.7	61.3													
80	34.4	34.4	33.9	34.2	34.1													
85	12.0	12.3	12.3	12.7	12.7													
90	1.29	1.56	1.64	1.80	1.82													
95	0.07	0.11	0.21	0.25	0.36													
100	0.12	0.17	0.17	0.19	0.22													
105	0.21	0.26	0.21	0.26	0.22													
110	0.30	0.36	0.32	0.36	0.30													
115	0.47	0.48	0.46	0.47	0.47													
120	0.55	0.58	0.52	0.56	0.52													
125	0.62	0.69	0.61	0.66	0.60													
130	0.76	0.79	0.76	0.76	0.71													
135	0.81	0.88	0.80	0.86	0.79													
140	0.89	0.95	0.89	0.95	0.87													
145	0.97	1.02	0.97	1.01	0.96													
150	1.04	1.09	1.04	1.09	1.02													
155	1.09	1.15	1.09	1.15	1.08													
160	1.18	1.21	1.16	1.21	1.16													
165	1.20	1.26	1.20	1.26	1.20													
170	1.27	1.29	1.28	1.30	1.27													
175	1.28	1.30	1.29	1.32	1.30													
180	1.30	1.31	1.30	1.32	1.39													

C Range: 0 - 360DEG
 C Interval: 15.0DEG
 Test Speed: HIGH
 Temperature:24.1DEG
 Operators:Bo Zou
 Test Date:2021-05-17

Checker: Bo Zou

γ Range: 0 - 180DEG
 γ Interval: 1.0DEG
 Test System:EVERFINE GO-2000A_V1 SYSTEM V2.0.291
 Humidity:33.6%
 Test Distance:10.149m [K=1.0000]
 Remarks: standard: GB/T 9468-2008

Assessor: Chunbo Zou