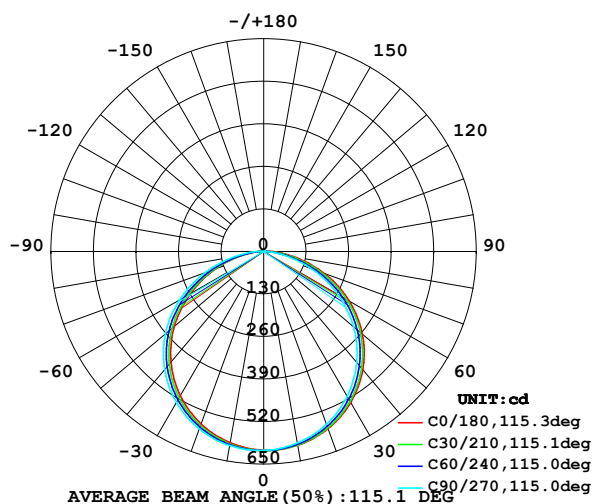


## LUMINAIRE PHOTOMETRIC TEST REPORT

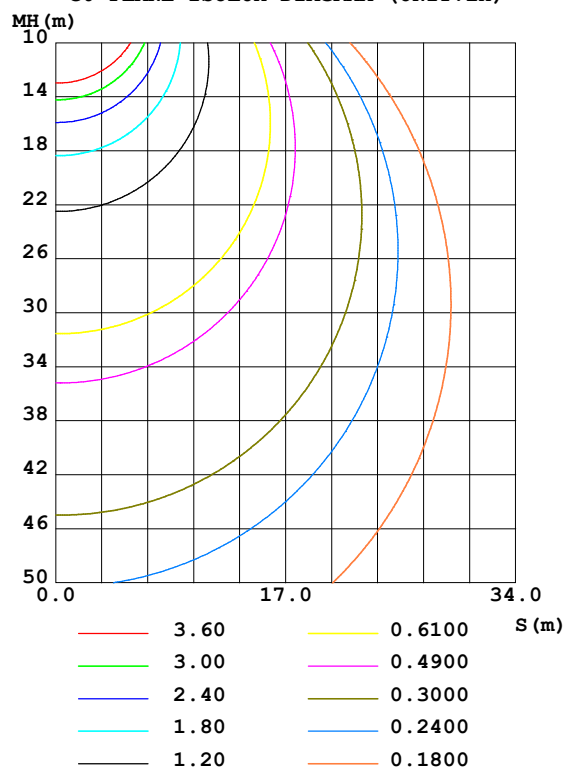
Test:U:12.00V I:1.346A P:16.15W PF:1.000 Lamp Flux:1816.5lx1 lm		
NAME: EKF4116HL90	SUR.:0.01m*1	SERIAL No.:

DATA OF LAMP		PHOTOMETRIC DATA Eff: 112.48 lm/W			
MODEL	EKF4116HL90	Imax(cd)	608.7	S/MH(C0/180)	1.25
NOMINAL POWER(W)	16	LOR(%)	100.0	S/MH(C90/270)	1.30
RATED VOLTAGE(V)	12	TOTAL FLUX(lm)	1816.5	η UP,DN(C0-180)	0.3,47.9
NOMINAL FLUX(lm)	1816.51	CIE CLASS	DIRECT	η UP,DN(C180-360)	0.6,51.2
LAMPS INSIDE	1	η up(%)	0.9	CIBSE SHR NOM	1.25
TEST VOLTAGE(V)	12	η down(%)	99.1	CIBSE SHR MAX	1.35

LUMINOUS INTENSITY DISTRIBUTION DIAGRAM



C0 PLANE ISOLUX DIAGRAM (UNIT:lx)



C Range: 0 - 360DEG  
C Interval: 15.0DEG  
Test Speed: HIGH  
Temperature:24.5DEG  
Operators:Lijian Jiang  
Test Date:2021-05-06

γ Range: 0 - 180DEG  
γ Interval: 1.0DEG  
Humidity:38.6%  
Test Distance:10.149m [K=1.0000]  
Remarks: standard: GB/T 9468-2008

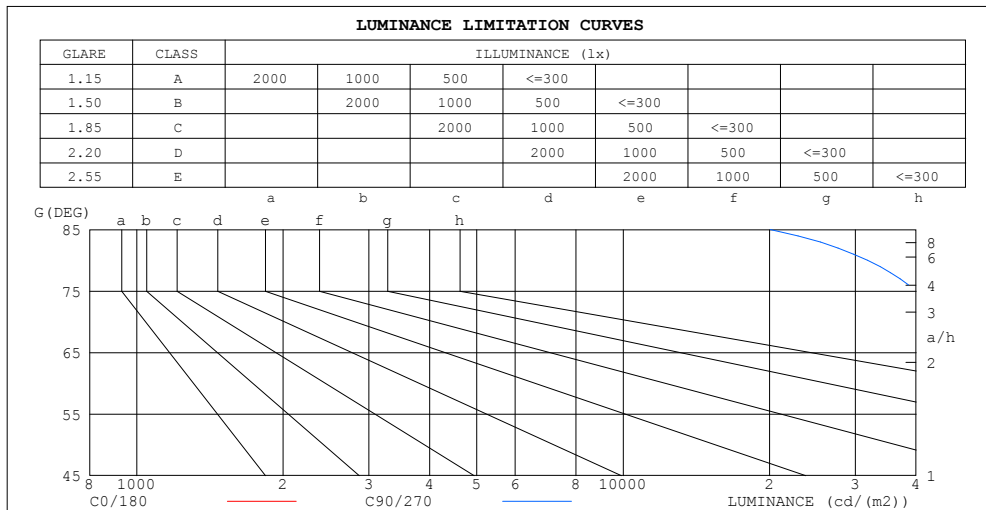
Checker: Lijian Jiang

Assessor: Chunbo Zhou

## ZONAL FLUX DIAGRAM AND LUMINANCE LIMITATION CURVES

ZONAL FLUX DIAGRAM:

$\gamma$	C0	C45	C90	C135	C180	C225	C270	C315	$\gamma$	$\Phi$ zone	$\Phi$ total	%lum, lamp
10	601.1	599.7	594.4	589.1	593.3	598.0	602.2	604.2	0- 10	57.47	57.47	3.16,3.16
20	576.2	571.7	561.8	552.9	560.7	568.4	577.2	583.0	10- 20	165.2	222.7	12.3,12.3
30	532.7	525.0	510.9	498.5	509.6	519.8	533.1	543.0	20- 30	252.2	474.8	26.1,26.1
40	471.5	461.0	442.8	427.1	441.1	453.5	471.3	485.0	30- 40	307.0	781.8	43,43
50	393.9	380.7	358.6	341.6	356.9	370.6	392.5	410.1	40- 50	322.1	1104	60.8,60.8
60	301.5	284.3	261.7	245.4	258.6	273.3	297.0	320.0	50- 60	294.1	1398	77,77
70	197.3	178.5	155.9	148.0	156.0	164.9	191.4	217.0	60- 70	226.7	1625	89.4,89.4
80	92.65	73.81	55.24	57.51	62.91	63.80	86.58	112.6	70- 80	132.0	1757	96.7,96.7
90	24.67	9.906	1.575	6.292	7.303	6.162	10.32	37.21	80- 90	43.93	1801	99.1,99.1
100	4.584	0.5228	0.4574	0.6209	0.4142	0.3762	0.2996	11.38	90-100	7.249	1808	99.5,99.5
110	0.7408	0.7626	0.8387	0.9697	0.7029	0.6312	0.6159	4.374	100-110	2.012	1810	99.6,99.6
120	1.062	1.149	1.263	1.373	1.074	0.9911	1.008	0.8819	110-120	1.041	1811	99.7,99.7
130	1.421	1.531	1.617	1.722	1.444	1.367	1.384	1.247	120-130	1.153	1812	99.8,99.8
140	1.764	1.863	1.923	1.999	1.765	1.705	1.727	1.585	130-140	1.262	1813	99.8,99.8
150	2.037	2.141	2.178	2.249	2.026	1.982	2.010	1.879	140-150	1.210	1815	99.9,99.9
160	2.282	2.348	2.364	2.418	2.288	2.216	2.255	2.140	150-160	1.005	1816	99.9,99.9
170	2.472	2.500	2.471	2.527	2.500	2.413	2.451	2.369	160-170	0.6715	1816	100,100
180	2.565	2.571	2.571	2.560	2.554	2.560	2.565	2.549	170-180	0.2383	1817	100,100
DEG	LUMINOUS INTENSITY:cd									UNIT:lm		



LUMINANCE cd/(m2)		
G (DEG)	C0/180	C90/270
85	58858	20068
80	53353	31810
75	55225	40017
70	57687	45583
65	59332	49709
60	60309	52337
55	60911	54288
50	61287	55787
45	61483	56919

C Range: 0 - 360DEG  
 C Interval: 15.0DEG  
 Test Speed: HIGH  
 Temperature:24.5DEG  
 Operators:Lijian Jiang  
 Test Date:2021-05-06

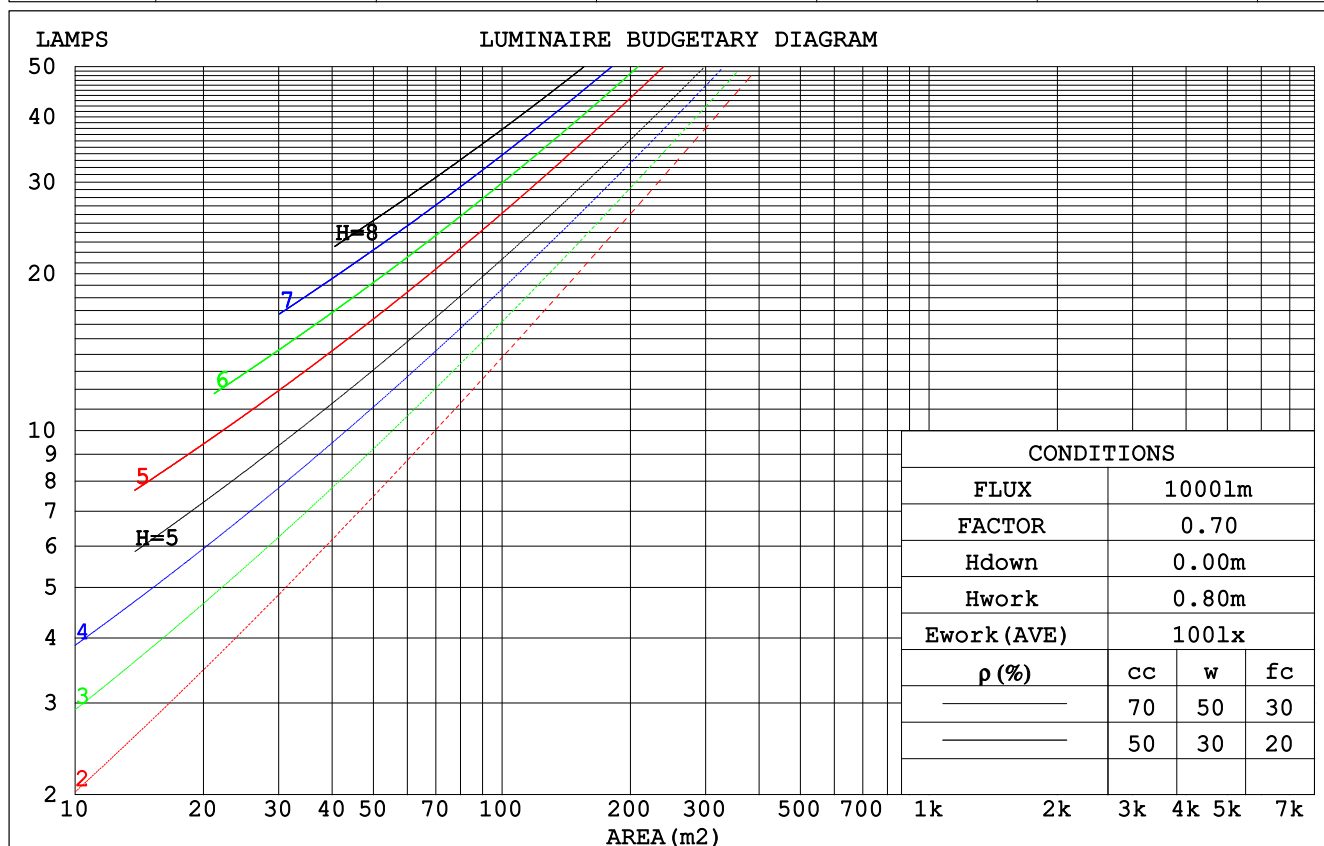
$\gamma$  Range: 0 - 180DEG  
 $\gamma$  Interval: 1.0DEG  
 Humidity:38.6%  
 Test Distance:10.149m [K=1.0000]  
 Remarks: standard: GB/T 9468-2008

Checker: Lijian Jiang

Assessor: Chunbo Zhou

## CU AND LUMINAIRE BUDGETARY ESTIMATE DIAGRAM

$\rho_{cc}$	80%			70%			50%			30%			10%			0
$\rho_w$	50%	30%	10%	50%	30%	10%	50%	30%	10%	50%	30%	10%	50%	30%	10%	0
$\rho_{fc}$	20%			20%			20%			20%			20%			0
RCR	RCR:Room Cavity Ratio			Coefficients of Utilization(CU)												
0.0	1.19	1.19	1.19	1.16	1.16	1.16	1.11	1.11	1.11	1.06	1.06	1.06	1.01	1.01	1.01	.99
1.0	1.03	.99	.95	1.01	.97	.93	.96	.93	.90	.92	.90	.87	.89	.86	.84	.82
2.0	.90	.83	.77	.88	.81	.76	.84	.79	.74	.81	.76	.72	.77	.74	.70	.68
3.0	.79	.70	.64	.77	.69	.63	.74	.67	.62	.71	.65	.61	.68	.63	.59	.57
4.0	.69	.61	.54	.68	.60	.53	.65	.58	.52	.63	.57	.52	.61	.55	.51	.49
5.0	.62	.53	.46	.61	.52	.46	.59	.51	.45	.56	.50	.45	.54	.49	.44	.42
6.0	.56	.47	.40	.55	.46	.40	.53	.45	.39	.51	.44	.39	.49	.43	.39	.37
7.0	.50	.42	.35	.50	.41	.35	.48	.40	.35	.46	.40	.35	.45	.39	.34	.32
8.0	.46	.37	.31	.45	.37	.31	.44	.36	.31	.43	.36	.31	.41	.35	.31	.29
9.0	.42	.34	.28	.42	.34	.28	.40	.33	.28	.39	.33	.28	.38	.32	.28	.26
10.0	.39	.31	.26	.38	.31	.26	.37	.30	.25	.36	.30	.25	.35	.29	.25	.23



C Range: 0 - 360DEG  
 C Interval: 15.0DEG  
 Test Speed: HIGH  
 Temperature: 24.5DEG  
 Operators: Lijian Jiang  
 Test Date: 2021-05-06

$\gamma$  Range: 0 - 180DEG  
 $\gamma$  Interval: 1.0DEG  
 Humidity: 38.6%  
 Test Distance: 10.149m [K=1.0000]  
 Remarks: standard: GB/T 9468-2008

Checker: Lijian Jiang

Assessor: Chunbo Zhou

## WEC AND CCEC

pcc	80%			70%			50%			30%			10%			0
pw	50%	30%	10%	50%	30%	10%	50%	30%	10%	50%	30%	10%	50%	30%	10%	0
pfc	20%			20%			20%			20%			20%			0
RCR	RCR:Room Cavity Ratio						Wall Exitance Coefficients(WEC)									
0.0																
1.0	.318	.181	.057	.311	.177	.056	.297	.170	.054	.284	.164	.053	.272	.158	.051	
2.0	.297	.163	.050	.290	.160	.049	.278	.155	.048	.267	.150	.047	.256	.145	.046	
3.0	.274	.146	.044	.268	.143	.043	.257	.139	.042	.247	.135	.042	.238	.132	.041	
4.0	.252	.131	.038	.247	.129	.038	.237	.126	.038	.228	.123	.037	.220	.120	.036	
5.0	.233	.119	.034	.228	.117	.034	.219	.114	.034	.211	.112	.033	.204	.109	.033	
6.0	.215	.108	.031	.211	.107	.031	.204	.104	.030	.197	.102	.030	.190	.100	.030	
7.0	.200	.099	.028	.197	.098	.028	.190	.096	.028	.183	.094	.027	.177	.092	.027	
8.0	.187	.091	.026	.184	.090	.026	.178	.089	.025	.172	.087	.025	.166	.085	.025	
9.0	.175	.085	.024	.172	.084	.024	.167	.082	.023	.161	.081	.023	.157	.079	.023	
10.0	.164	.079	.022	.162	.078	.022	.157	.077	.022	.152	.076	.021	.148	.074	.021	

pcc	80%			70%			50%			30%			10%			0
pw	50%	30%	10%	50%	30%	10%	50%	30%	10%	50%	30%	10%	50%	30%	10%	0
pfc	20%			20%			20%			20%			20%			0
RCR	RCR:Room Cavity Ratio						Ceiling Cavity Exitance Coefficients(CCEC)									
0.0	.197	.197	.197	.168	.168	.168	.115	.115	.115	.066	.066	.066	.021	.021	.021	
1.0	.188	.163	.140	.160	.140	.121	.110	.096	.084	.063	.056	.049	.020	.018	.016	
2.0	.180	.139	.104	.154	.119	.090	.105	.083	.063	.061	.048	.037	.020	.016	.012	
3.0	.172	.121	.081	.147	.104	.070	.101	.073	.049	.058	.042	.029	.019	.014	.009	
4.0	.164	.108	.065	.141	.093	.056	.097	.065	.040	.056	.038	.023	.018	.012	.008	
5.0	.157	.098	.054	.135	.084	.047	.093	.059	.033	.054	.035	.020	.017	.011	.006	
6.0	.150	.089	.046	.129	.077	.040	.089	.054	.028	.052	.032	.017	.017	.010	.006	
7.0	.143	.082	.040	.123	.071	.035	.085	.050	.025	.049	.029	.015	.016	.010	.005	
8.0	.136	.077	.035	.117	.066	.031	.081	.047	.022	.047	.027	.013	.015	.009	.004	
9.0	.130	.072	.032	.112	.062	.028	.078	.044	.020	.045	.026	.012	.015	.008	.004	
10.0	.124	.067	.029	.107	.058	.026	.074	.041	.018	.043	.024	.011	.014	.008	.004	

C Range: 0 - 360DEG  
 C Interval: 15.0DEG  
 Test Speed: HIGH  
 Temperature:24.5DEG  
 Operators:Lijian Jiang  
 Test Date:2021-05-06

γ Range: 0 - 180DEG  
 γ Interval: 1.0DEG  
 Humidity:38.6%  
 Test Distance:10.149m [K=1.0000]  
 Remarks: standard: GB/T 9468-2008

Checker: Lijian Jiang

Assessor: Chunbo Zhou

**UGR(Unified Glare Rating) Table**

ceiling/cavity	0.7	0.7	0.5	0.5	0.3	0.7	0.7	0.5	0.5	0.3
walls	0.5	0.3	0.5	0.3	0.3	0.5	0.3	0.5	0.3	0.3
working plane	0.2	0.2	0.2	0.2	0.2	0.2	0.2	0.2	0.2	0.2
Room dimensions	Viewed crosswise					Viewed endwise				
x = 2H y = 2H	27.2	28.8	27.5	29.0	29.2	26.7	28.3	27.0	28.5	28.7
3H	28.9	30.3	29.2	30.6	30.8	28.1	29.6	28.5	29.8	30.1
4H	29.6	30.9	29.9	31.2	31.5	28.7	30.0	29.0	30.3	30.5
6H	30.1	31.4	30.5	31.7	32.0	29.0	30.2	29.3	30.5	30.8
8H	30.4	31.6	30.7	31.9	32.2	29.0	30.2	29.4	30.5	30.9
12H	30.5	31.7	30.9	32.0	32.3	29.0	30.2	29.4	30.5	30.9
4H 2H	27.8	29.2	28.1	29.4	29.7	27.4	28.8	27.8	29.0	29.3
3H	29.7	30.8	30.0	31.2	31.5	29.0	30.2	29.4	30.5	30.8
4H	30.5	31.6	30.9	31.9	32.3	29.6	30.7	30.0	31.1	31.4
6H	31.2	32.1	31.6	32.5	32.9	30.1	31.0	30.5	31.4	31.8
8H	31.4	32.3	31.9	32.7	33.1	30.2	31.1	30.6	31.5	31.9
12H	31.7	32.5	32.1	32.9	33.3	30.2	31.0	30.7	31.4	31.9
8H 4H	30.7	31.6	31.1	32.0	32.4	30.0	30.9	30.4	31.2	31.6
6H	31.5	32.3	32.0	32.7	33.1	30.5	31.3	31.0	31.7	32.1
8H	31.9	32.6	32.4	33.0	33.5	30.7	31.4	31.2	31.8	32.3
12H	32.3	32.8	32.7	33.3	33.8	30.8	31.4	31.3	31.9	32.4
12H 4H	30.7	31.5	31.1	31.9	32.4	30.0	30.8	30.4	31.2	31.6
6H	31.6	32.2	32.0	32.7	33.1	30.6	31.3	31.1	31.7	32.2
8H	32.0	32.6	32.5	33.0	33.5	30.8	31.4	31.3	31.9	32.4
Variations with the observer position at spacings:										
S = 1.0H	+ 0.1 / - 0.2					+ 0.2 / - 0.2				
1.5H	+ 0.2 / - 0.3					+ 0.2 / - 0.4				
2.0H	+ 0.1 / - 0.3					+ 0.2 / - 0.4				

CIE Pub.117 Corrected 1817 lm Total Lamp Luminous Flux.(8log(F/F0) = 2.1)

C Range: 0 - 360DEG  
C Interval: 15.0DEG  
Test Speed: HIGH  
Temperature:24.5DEG  
Operators:Lijian Jiang  
Test Date:2021-05-06

γ Range: 0 - 180DEG  
γ Interval: 1.0DEG  
Humidity:38.6%  
Test Distance:10.149m [K=1.0000]  
Remarks: standard: GB/T 9468-2008

Checker: Lijian Jiang

Assessor: Chunbo Zhou

## UTILIZATION FACTORS TABLE

REFLECTANCE										
Ceiling	0.8	0.8	0.8	0.7	0.7	0.7	0.5	0.5	0.5	0
Walls	0.7	0.5	0.3	0.7	0.5	0.3	0.7	0.5	0.3	0
Working plane	0.2	0.2	0.2	0.2	0.2	0.2	0.2	0.2	0.2	0
ROOM INDEX	UTILIZATION FACTORS (PERCENT) $k(RI) \times RCR = 5$									
$k = 0.60$	57	45	38	56	45	38	55	44	37	31
0.80	67	55	47	66	54	47	64	54	47	40
1.00	75	64	56	74	63	56	71	64	55	48
1.25	82	71	64	81	71	64	78	69	63	55
1.50	87	77	70	85	76	69	82	74	68	60
2.00	94	85	79	92	84	78	89	82	76	68
2.50	98	90	84	96	89	83	92	86	81	72
3.00	101	94	89	99	93	88	95	90	85	77
4.00	106	100	95	103	98	93	99	94	91	81
5.00	108	103	99	106	101	97	101	97	94	85
ROOM INDEX	UF (total)									Direct
According to DIN EN 13032-2 2004			Suspended					SHRNOM = 1.25		

C Range: 0 - 360DEG  
 C Interval: 15.0DEG  
 Test Speed: HIGH  
 Temperature: 24.5DEG  
 Operators: Lijian Jiang  
 Test Date: 2021-05-06

Checker: Lijian Jiang

$\gamma$  Range: 0 - 180DEG  
 $\gamma$  Interval: 1.0DEG  
 Humidity: 38.6%  
 Test Distance: 10.149m [K=1.0000]  
 Remarks: standard: GB/T 9468-2008

Assessor: Chunbo Zhou

## ISOCANDELA DIAGRAM

Conical surface Flux(90deg):

943.64 lm

%lum = 51.9%

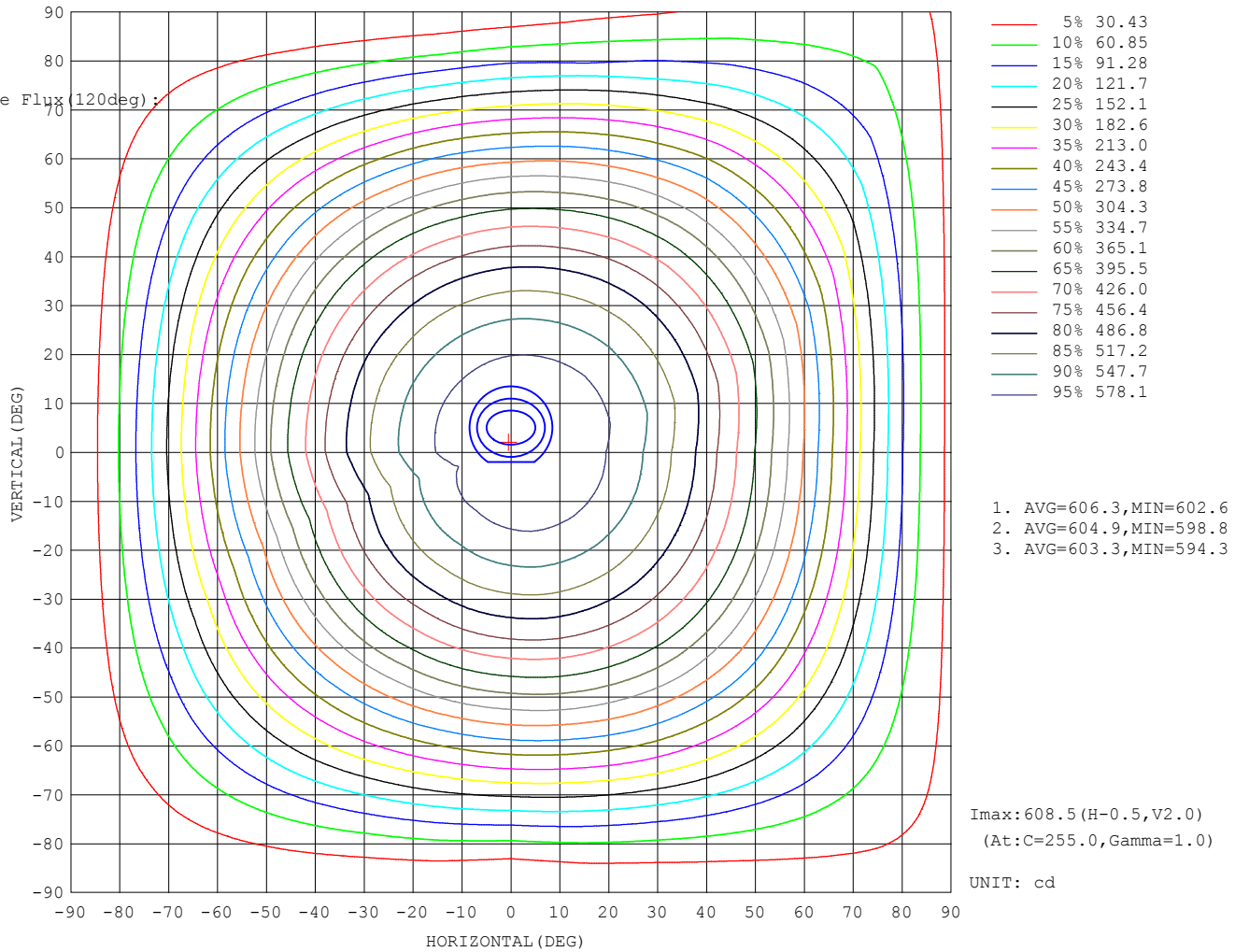
%lamp = 51.9%

Conical surface Flux(120deg):

1398.1 lm

%lum = 77.0%

%lamp = 77.0%



C Range: 0 - 360DEG  
C Interval: 15.0DEG  
Test Speed: HIGH  
Temperature:24.5DEG  
Operators:Lijian Jiang  
Test Date:2021-05-06

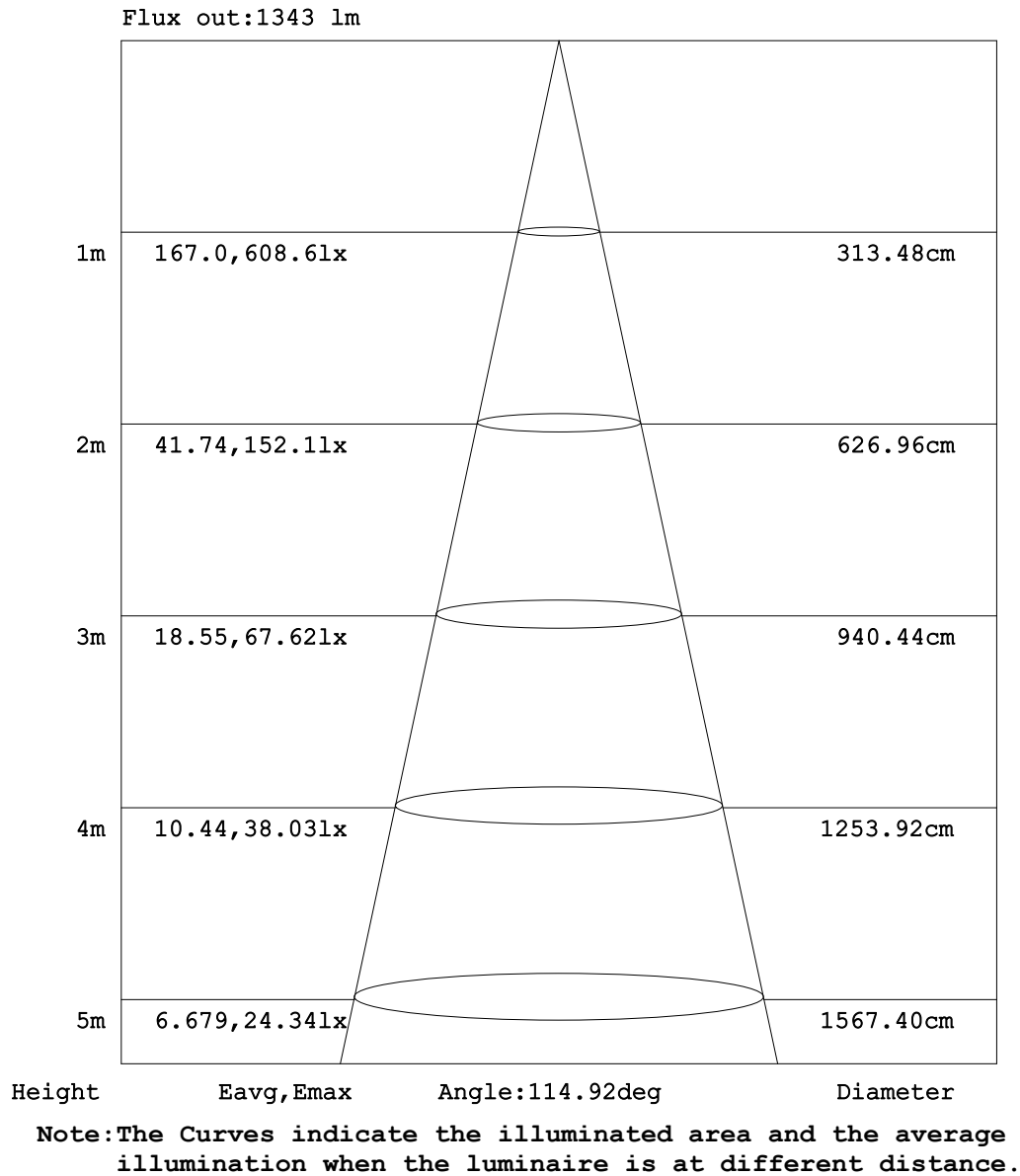
Checker: Lijian Jiang

$\gamma$  Range: 0 - 180DEG  
 $\gamma$  Interval: 1.0DEG

Humidity:38.6%  
Test Distance:10.149m [K=1.0000]  
Remarks: standard: GB/T 9468-2008

Assessor: Chunbo Zhou

## AAI Figure



C Range: 0 - 360DEG  
 C Interval: 15.0DEG  
 Test Speed: HIGH  
 Temperature:24.5DEG  
 Operators:Lijian Jiang  
 Test Date:2021-05-06

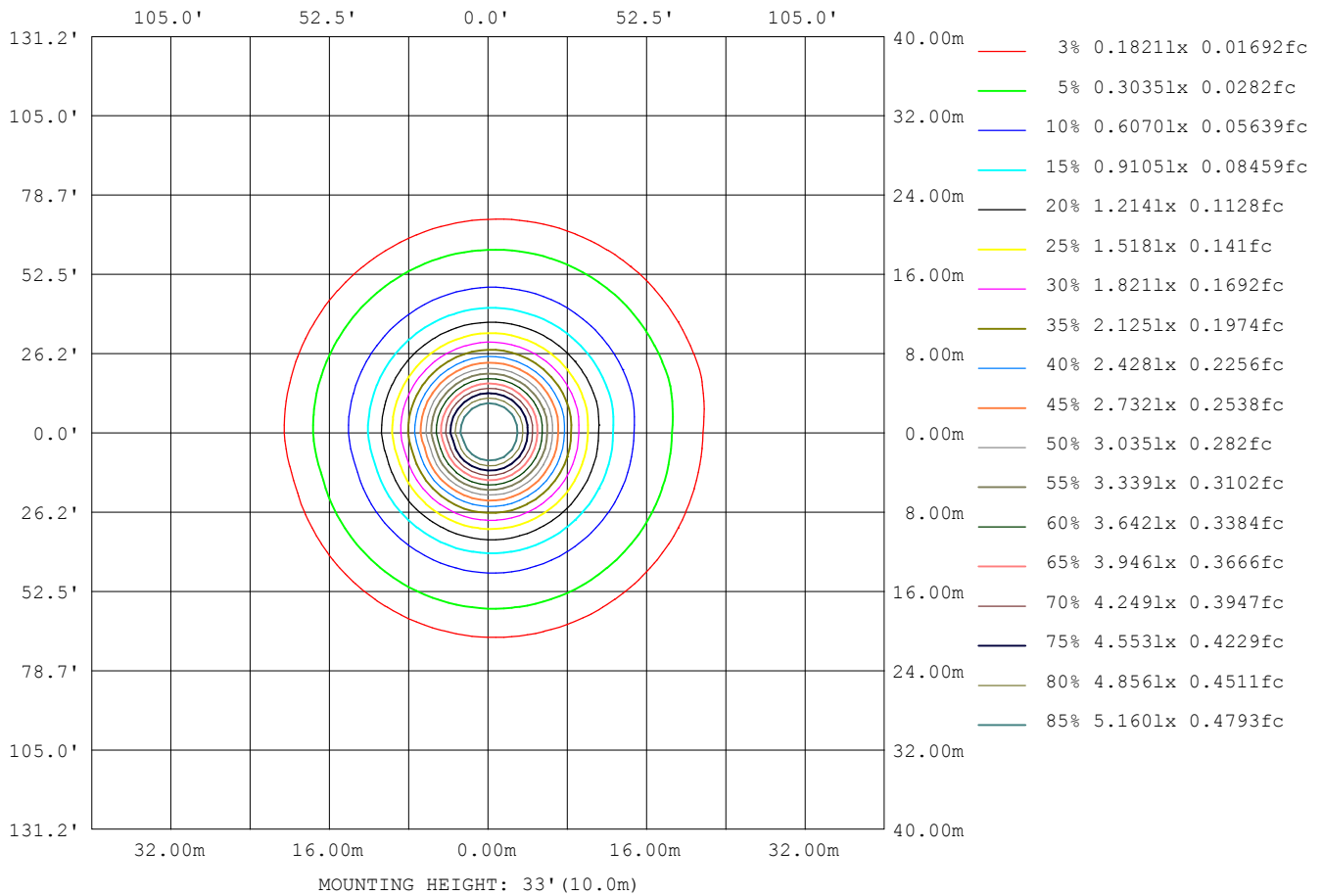
γ Range: 0 - 180DEG  
 γ Interval: 1.0DEG  
 Humidity:38.6%  
 Test Distance:10.149m [K=1.0000]  
 Remarks: standard: GB/T 9468-2008

Checker: Lijian Jiang

Assessor: Chunbo Zhou



## ISOLUX DIAGRAM



C Range: 0 - 360DEG  
 C Interval: 15.0DEG  
 Test Speed: HIGH  
 Temperature: 24.5DEG  
 Operators: Lijian Jiang  
 Test Date: 2021-05-06

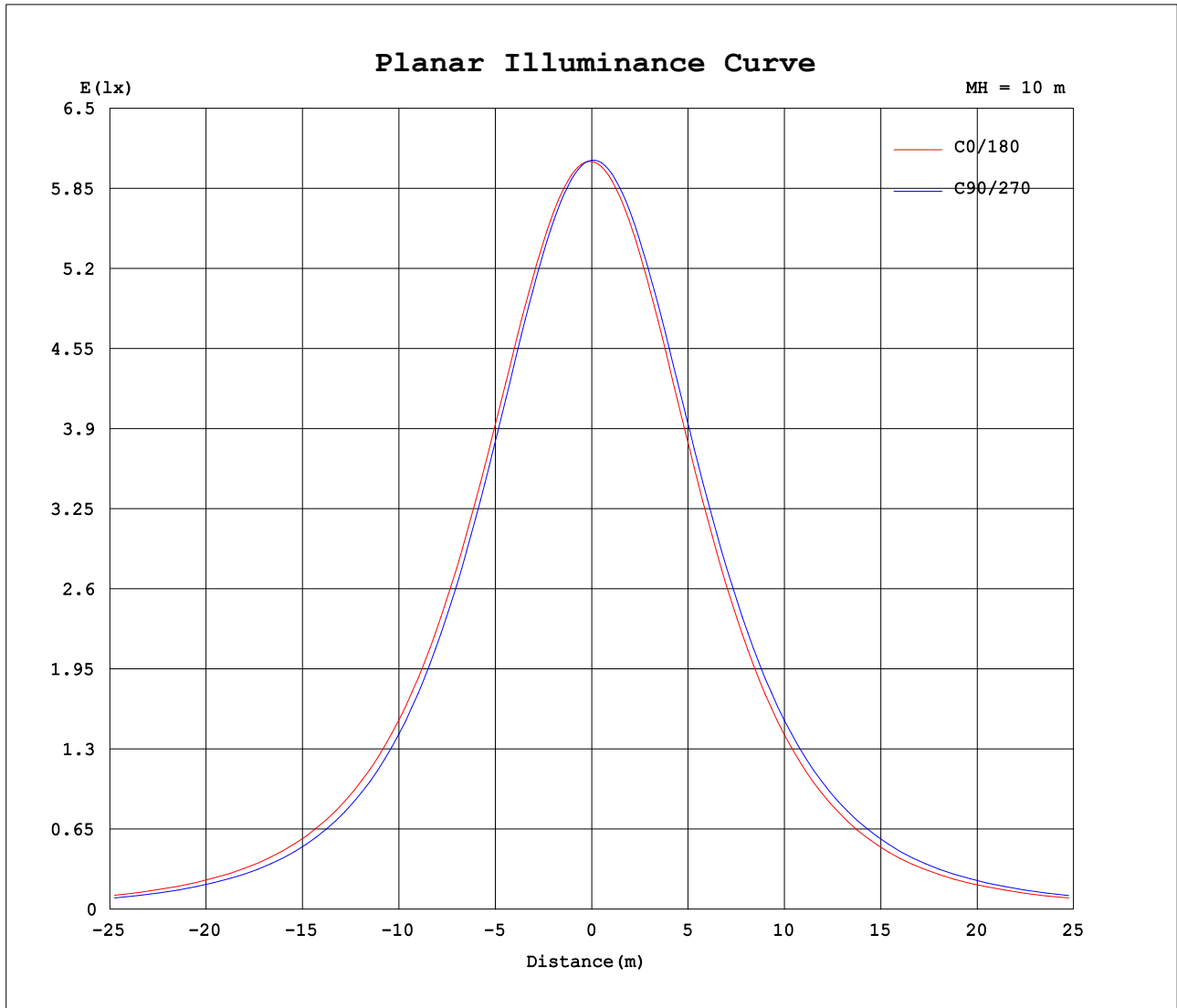
Checker: Lijian Jiang

$\gamma$  Range: 0 - 180DEG  
 $\gamma$  Interval: 1.0DEG

Humidity: 38.6%  
 Test Distance: 10.149m [K=1.0000]  
 Remarks: standard: GB/T 9468-2008

Assessor: Chunbo Zhou

## Planar Illuminance Curve



C Range: 0 - 360DEG  
C Interval: 15.0DEG  
Test Speed: HIGH  
Temperature: 24.5DEG  
Operators: Lijian Jiang  
Test Date: 2021-05-06

Checker: Lijian Jiang

$\gamma$  Range: 0 - 180DEG  
 $\gamma$  Interval: 1.0DEG

Humidity: 38.6%  
Test Distance: 10.149m [K=1.0000]  
Remarks: standard: GB/T 9468-2008

Assessor: Chunbo Zhou

# LUMINOUS DISTRIBUTION INTENSITY DATA

Table--1

UNIT: cd

C (DEG) γ (DEG)	0	15	30	45	60	75	90	105	120	135	150	165	180	195	210	225	240	255	270
0	607	608	609	609	608	609	608	607	606	606	604	602	607	608	609	609	608	609	608
5	606	607	607	607	606	605	604	602	600	600	598	595	603	604	605	606	606	607	607
10	601	601	601	600	598	597	594	592	590	589	587	582	593	595	597	598	599	601	602
15	591	591	590	588	586	584	580	578	574	573	571	565	579	581	584	586	588	590	592
20	576	576	574	572	569	566	562	558	554	553	550	546	561	563	566	568	571	574	577
25	557	556	553	551	547	543	539	534	530	528	525	520	537	540	544	546	550	554	558
30	533	531	529	525	521	516	511	506	501	499	495	489	510	513	517	520	524	529	533
35	504	502	499	495	490	485	479	474	468	465	461	456	477	481	485	489	494	499	504
40	472	469	466	461	455	450	443	437	430	427	423	420	441	445	449	453	459	465	471
45	435	432	428	423	416	410	402	396	389	386	382	379	401	404	409	414	420	427	434
50	394	391	386	381	374	367	359	352	345	342	338	336	357	361	366	371	378	385	392
55	349	346	341	335	327	319	311	303	298	293	291	288	308	313	317	324	330	339	347
60	302	296	292	284	278	269	262	254	249	245	243	241	259	263	267	273	280	289	297
65	251	246	241	232	225	217	210	204	200	197	195	193	207	211	214	220	227	237	245
70	197	192	187	178	171	163	156	153	149	148	146	146	156	157	161	165	173	182	191
75	143	139	132	124	117	111	104	103	101	100	99.5	99.4	107	107	109	112	118	126	137
80	92.6	87.9	81.3	73.8	67.1	62.6	55.2	58.1	57.0	57.5	57.3	57.6	62.9	62.1	62.4	63.8	68.2	75.1	86.6
85	51.3	46.2	39.7	33.1	28.4	25.4	17.5	23.4	23.5	24.6	24.6	24.8	27.7	26.8	26.1	26.6	29.8	34.4	43.8
90	24.7	20.2	14.6	9.91	7.14	4.98	1.57	4.84	5.72	6.29	6.36	6.46	7.30	6.71	6.20	6.16	8.28	11.3	10.3
95	11.6	8.16	4.67	2.63	1.14	0.33	0.30	0.39	0.82	0.86	0.92	0.83	0.96	1.02	0.98	1.01	2.02	4.22	0.17
100	4.58	2.20	1.12	0.52	0.41	0.48	0.46	0.54	0.53	0.62	0.61	0.62	0.41	0.40	0.37	0.38	0.74	2.23	0.30
105	1.28	0.59	0.57	0.57	0.55	0.66	0.64	0.75	0.72	0.77	0.73	0.77	0.55	0.48	0.51	0.45	0.58	1.15	0.45
110	0.74	0.74	0.70	0.76	0.74	0.83	0.84	0.95	0.91	0.97	0.93	0.95	0.70	0.65	0.67	0.63	0.64	0.60	0.62
115	0.88	0.92	0.89	0.95	0.94	1.04	1.07	1.15	1.13	1.17	1.12	1.14	0.89	0.83	0.87	0.80	0.83	0.78	0.81
120	1.06	1.11	1.08	1.15	1.15	1.25	1.26	1.35	1.33	1.37	1.32	1.33	1.07	1.01	1.06	0.99	1.03	0.98	1.01
125	1.24	1.30	1.26	1.36	1.34	1.44	1.44	1.54	1.50	1.56	1.50	1.51	1.26	1.20	1.24	1.18	1.22	1.17	1.20
130	1.42	1.48	1.45	1.53	1.52	1.62	1.62	1.71	1.68	1.72	1.66	1.69	1.44	1.41	1.43	1.37	1.42	1.36	1.38
135	1.60	1.67	1.62	1.71	1.70	1.79	1.77	1.86	1.82	1.86	1.79	1.84	1.61	1.56	1.60	1.55	1.59	1.52	1.56
140	1.76	1.84	1.79	1.86	1.86	1.93	1.92	1.99	1.94	2.00	1.93	1.98	1.76	1.72	1.75	1.70	1.75	1.69	1.73
145	1.90	1.98	1.93	2.01	2.00	2.07	2.05	2.12	2.07	2.13	2.07	2.11	1.90	1.86	1.91	1.85	1.90	1.85	1.87
150	2.04	2.12	2.07	2.14	2.12	2.19	2.18	2.24	2.19	2.25	2.18	2.21	2.03	2.01	2.04	1.98	2.03	1.97	2.01
155	2.18	2.24	2.21	2.25	2.22	2.29	2.28	2.32	2.29	2.33	2.28	2.31	2.16	2.12	2.16	2.11	2.15	2.11	2.12
160	2.28	2.35	2.30	2.35	2.31	2.38	2.36	2.41	2.38	2.42	2.36	2.39	2.29	2.22	2.27	2.22	2.27	2.21	2.25
165	2.40	2.42	2.37	2.43	2.39	2.45	2.42	2.47	2.42	2.47	2.41	2.45	2.41	2.33	2.38	2.33	2.37	2.31	2.35
170	2.47	2.51	2.46	2.50	2.46	2.51	2.47	2.52	2.47	2.53	2.48	2.48	2.50	2.42	2.47	2.41	2.46	2.40	2.45
175	2.55	2.56	2.51	2.55	2.52	2.55	2.51	2.55	2.53	2.57	2.51	2.52	2.55	2.49	2.54	2.48	2.53	2.48	2.52
180	2.57	2.57	2.55	2.57	2.57	2.57	2.57	2.57	2.56	2.56	2.55	2.54	2.55	2.55	2.57	2.56	2.57	2.55	2.57

C Range: 0 - 360DEG  
C Interval: 15.0DEG  
Test Speed: HIGH  
Temperature:24.5DEG  
Operators:Lijian Jiang  
Test Date:2021-05-06

γ Range: 0 - 180DEG  
γ Interval: 1.0DEG  
Humidity:38.6%  
Test Distance:10.149m [K=1.0000]  
Remarks: standard: GB/T 9468-2008

Checker: Lijian Jiang

Assessor: Chunbo Zhou

# LUMINOUS DISTRIBUTION INTENSITY DATA

Table--2

UNIT: cd

C (DEG) γ (DEG)	285	300	315	330	345													
0	607	606	606	604	602													
5	607	607	608	606	604													
10	603	603	604	603	601													
15	593	595	596	595	593													
20	579	581	583	582	581													
25	560	563	565	565	564													
30	537	540	543	543	543													
35	509	513	516	517	516													
40	476	481	485	486	485													
45	440	446	450	451	450													
50	399	406	410	412	412													
55	354	362	367	369	369													
60	306	313	320	321	323													
65	255	263	270	271	273													
70	202	210	217	219	221													
75	147	156	163	166	168													
80	89.5	103	113	116	118													
85	52.6	61.1	69.7	72.7	75.2													
90	23.1	28.0	37.2	42.1	44.5													
95	9.97	12.9	20.8	24.1	26.3													
100	6.37	8.92	11.4	13.4	14.7													
105	3.83	5.95	6.84	6.59	6.81													
110	0.63	3.90	4.37	3.86	2.53													
115	0.74	0.77	0.73	2.05	1.23													
120	0.93	0.95	0.88	1.15	0.92													
125	1.12	1.14	1.06	1.09	1.03													
130	1.31	1.32	1.25	1.28	1.21													
135	1.48	1.50	1.42	1.45	1.40													
140	1.64	1.66	1.58	1.62	1.56													
145	1.79	1.81	1.75	1.78	1.72													
150	1.94	1.94	1.88	1.93	1.87													
155	2.05	2.08	2.03	2.07	2.02													
160	2.19	2.21	2.14	2.20	2.13													
165	2.28	2.33	2.28	2.32	2.27													
170	2.38	2.43	2.37	2.42	2.38													
175	2.46	2.51	2.47	2.51	2.47													
180	2.55	2.56	2.55	2.54	2.55													

C Range: 0 - 360DEG  
C Interval: 15.0DEG  
Test Speed: HIGH  
Temperature:24.5DEG  
Operators:Lijian Jiang  
Test Date:2021-05-06

γ Range: 0 - 180DEG  
γ Interval: 1.0DEG  
Humidity:38.6%  
Test Distance:10.149m [K=1.0000]  
Remarks: standard: GB/T 9468-2008

Checker: Lijian Jiang

Assessor: Chunbo Zhou