

## Report Title

Sample : LED Soft light bar  
Specification : EKF52420120  
Sample No. : WY-GX-2020102609  
Manufacturer :  
Assessor : Chunbo Zhou  
Remark : /

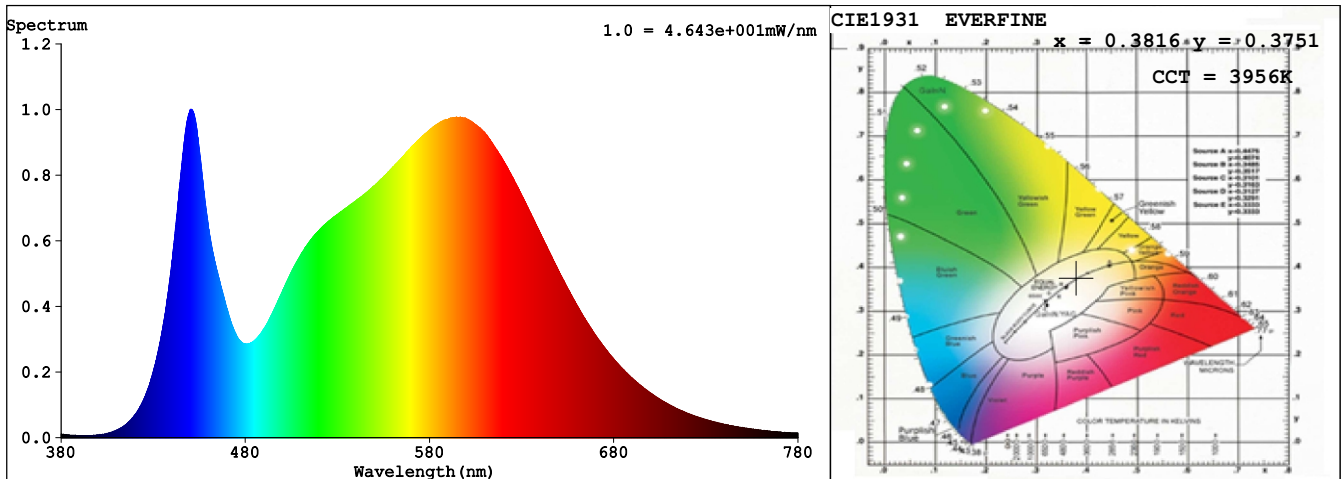
Date : 2020-10-27 15:16:36  
Standard : IES LM-79-08  
Instrument : HaasSuite(EVERFINE)  
Test by : Hu Cong

## Test Condition

Temperature : 25.8Deg  
WL Range : 380nm-780nm  
Test Mode : Fast Test  
Sensitivity : High

RH : 41.9%  
IP : 52590 (80%)  
T : 33 ms

## Spectrum



Spectral Distribution

CIE1931 Chromaticity Diagram

## Colorimetric Parameters

Chromaticity Coordinate:  $x = 0.3816$   $y = 0.3751$  /  $u' = 0.2265$   $v' = 0.5010$  ( $duv = -1.13e-03$ )

CCT= 3956K Prcp WL:  $L_d = 579.9nm$  Purity=27.1%

Peak WL:  $L_p = 451nm$  FWHM:  $= 25.6nm$  Ratio: R=18.6% G=77.9% B=3.6%

Render Index:  $R_a = 83.3$  TM30:  $R_f = 82$   $R_g = 96$

R1 =82 R2 =89 R3 =95 R4 =82 R5 =82 R6 =85 R7 =86

R8 =65 R9 =11 R10=75 R11=81 R12=65 R13=84 R14=97 R15=76

WHITE:ANSI\_4000K

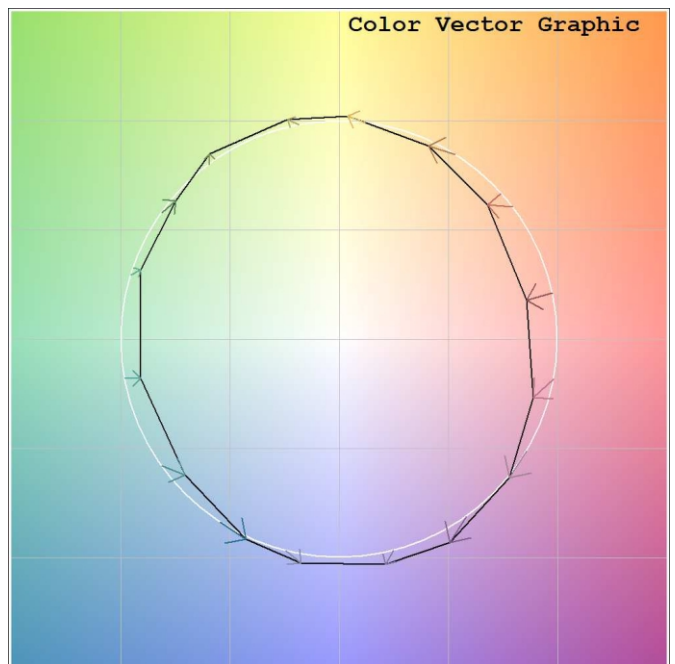
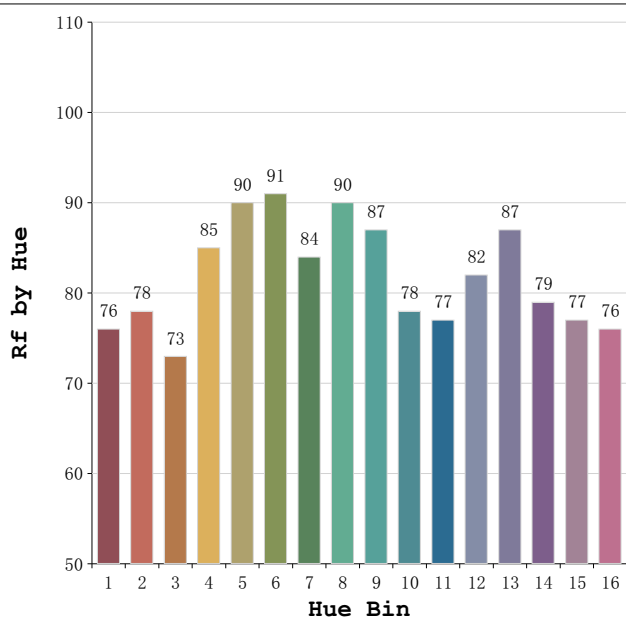
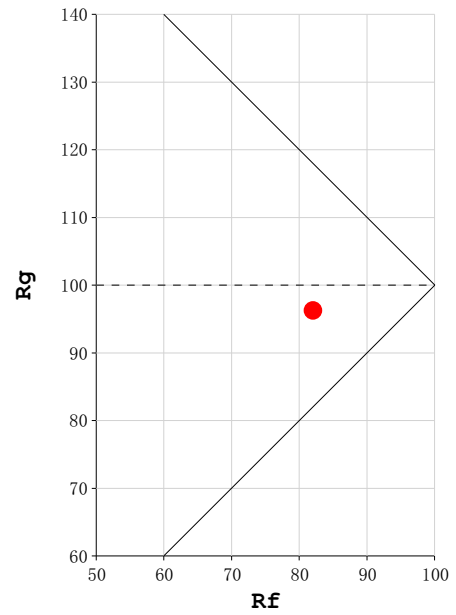
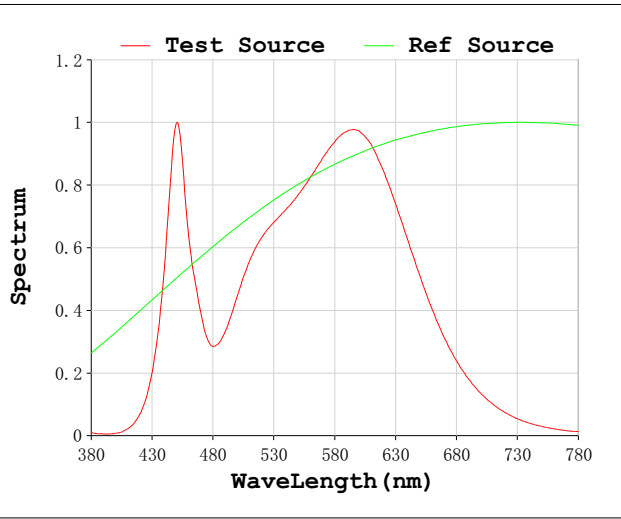
## Photometric & Radiometric Parameters

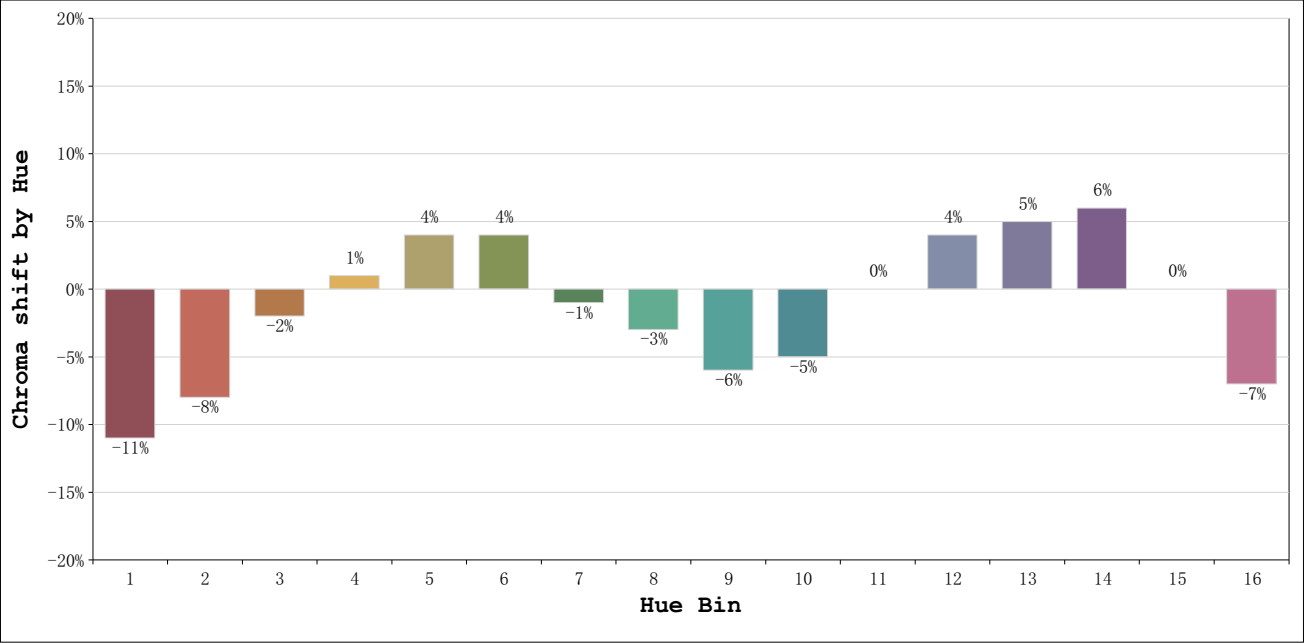
Flux = 2586.8 lm Eff. : 108.01 lm/W  $F_e = 7.9537 W$

## Electrical parameters

V = 24.00 V I = 0.9981 A P = 23.95 W PF = 1.0000 F=0.00 Hz

Rf: 82      CCT: 3956 K       $u'$ : 0.2265  
Rg: 96      Duv: -0.0011       $v'$ : 0.5010





|         |               |    | Graphic shift(%) |     |
|---------|---------------|----|------------------|-----|
| Hue Bin | Hue Angle     | Rf | Chroma           | Hue |
| 1       | 0.0 - 22.5    | 76 | -11              | 0   |
| 2       | 22.5 - 45.0   | 78 | -8               | 7   |
| 3       | 45.0 - 67.5   | 73 | -2               | 12  |
| 4       | 67.5 - 90.0   | 85 | 1                | 8   |
| 5       | 90.0 - 112.5  | 90 | 4                | 4   |
| 6       | 112.5 - 135.0 | 91 | 4                | -2  |
| 7       | 135.0 - 157.5 | 84 | -1               | -7  |
| 8       | 157.5 - 180.0 | 90 | -3               | -2  |
| 9       | 180.0 - 202.5 | 87 | -6               | 2   |
| 10      | 202.5 - 225.0 | 78 | -5               | 9   |
| 11      | 225.0 - 247.5 | 77 | 0                | 14  |
| 12      | 247.5 - 270.0 | 82 | 4                | 8   |
| 13      | 270.0 - 292.5 | 87 | 5                | -4  |
| 14      | 292.5 - 315.0 | 79 | 6                | -12 |
| 15      | 315.0 - 337.5 | 77 | 0                | -13 |
| 16      | 337.5 - 360.0 | 76 | -7               | -9  |