

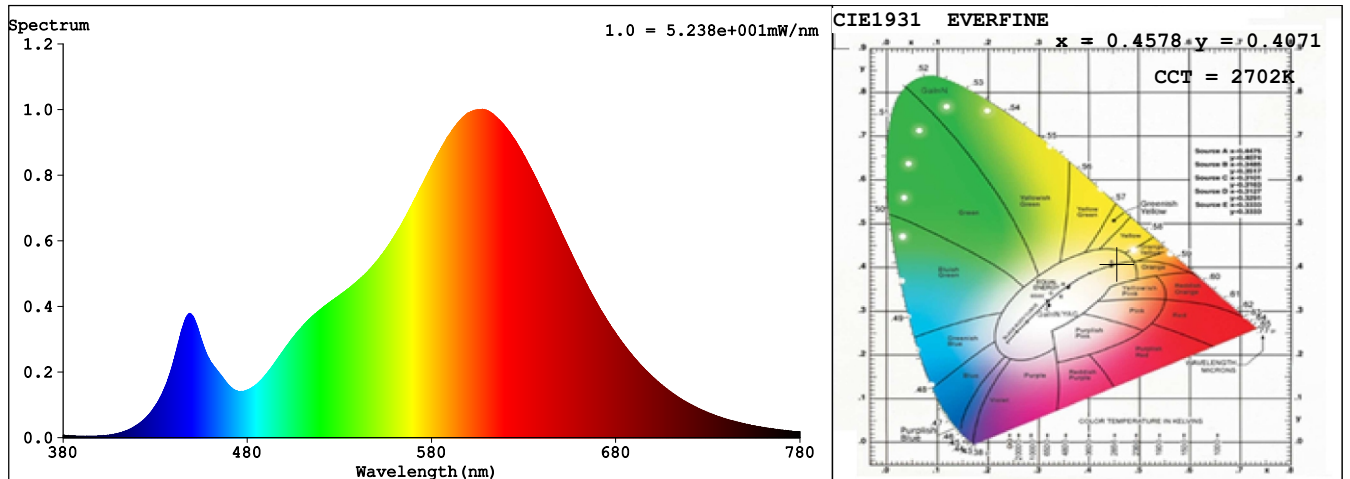
Report Title

Sample	: LED Soft light bar	Date	: 2020-10-27 15:46:03
Specification	: EKF52123126	Standard	: IES LM-79-08
Sample No.	: WY-GX-2020102614	Instrument	: HaasSuite(EVERFINE)
Manufacturer	:	Test by	: Hu Cong
Assessor	: Chunbo Zhou		
Remark	: /		

Test Condition

Temperature	: 25.7Deg	RH	: 41.9%
WL Range	: 380nm-780nm	IP	: 49735 (76%)
Test Mode	: Fast Test	T	: 28 ms
Sensitivity	: High		

Spectrum



Spectral Distribution

CIE1931 Chromaticity Diagram

Colorimetric Parameters

Chromaticity Coordinate: $x = 0.4578$ $y = 0.4071$ / $u' = 0.2627$ $v' = 0.5257$ ($duv = -1.13e-03$)

CCT= 2702K Prcp WL: $L_d = 584.6nm$ Purity=59.6%

Peak WL: $L_p = 608nm$ FWHM: $= 117.1nm$ Ratio: R=25.1% G=72.8% B=2.1%

Render Index: $R_a = 82.2$ TM30: $R_f = 81$ $R_g = 97$

R1 =81 R2 =91 R3 =96 R4 =80 R5 =81 R6 =90 R7 =81

R8 =57 R9 =8 R10=80 R11=80 R12=77 R13=83 R14=98 R15=73

WHITE:ANSI_2700K

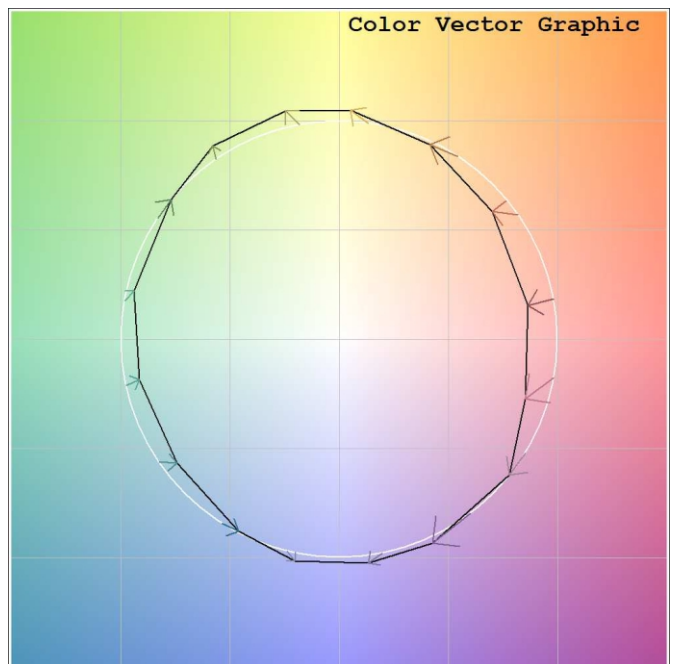
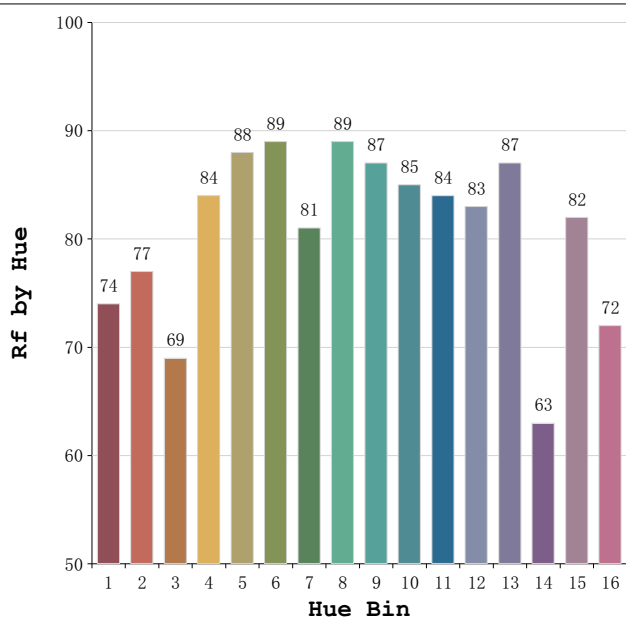
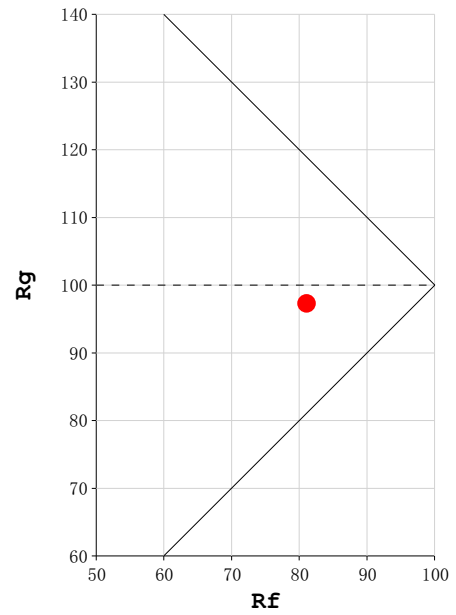
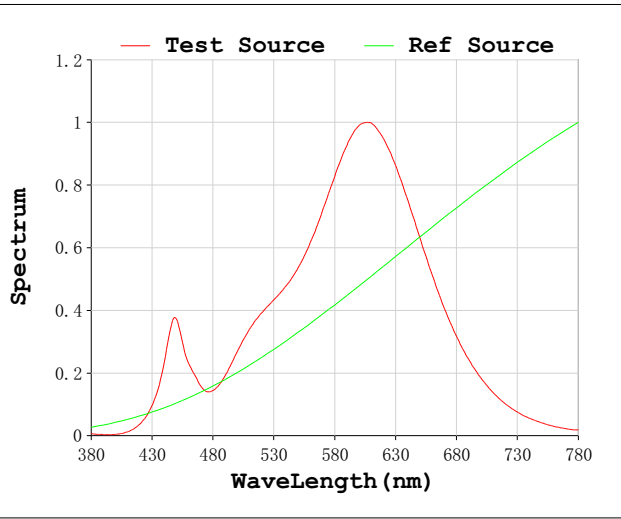
Photometric & Radiometric Parameters

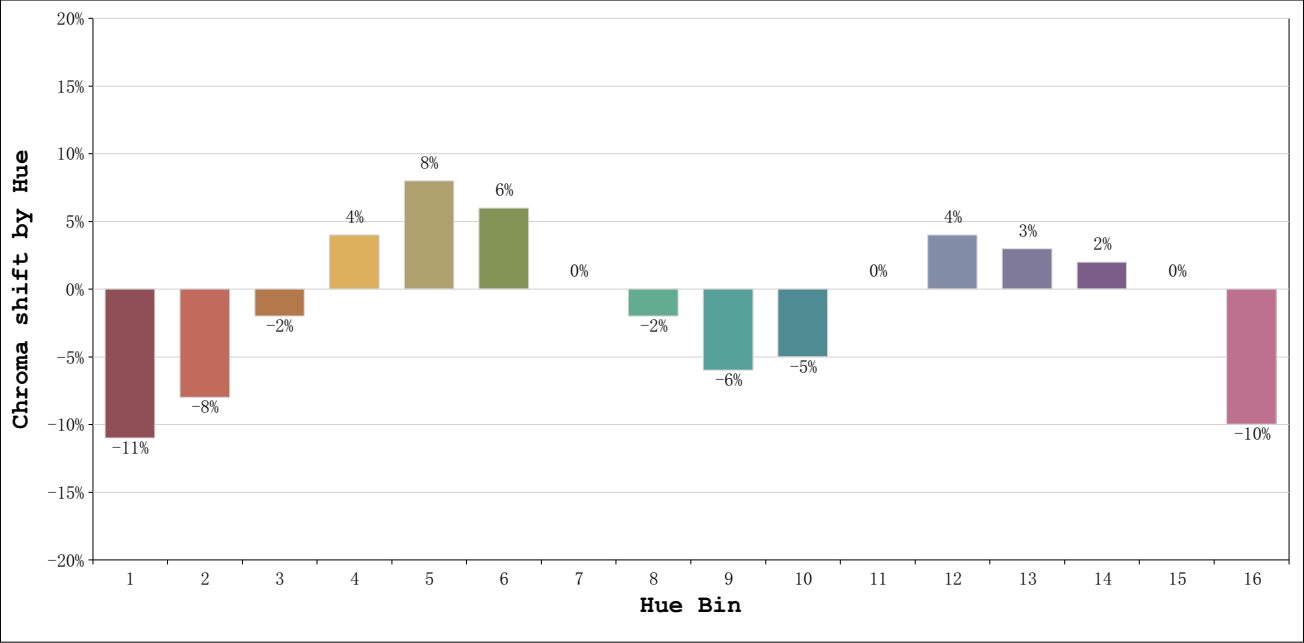
Flux = 2392.1 lm Eff. : 99.09 lm/W $F_e = 7.5089 W$

Electrical parameters

V = 24.00 V I = 1.006 A P = 24.14 W PF = 1.0000 F=0.00 Hz

Rf: 81 CCT: 2702 K u' : 0.2627
Rg: 97 Duv: -0.0011 v' : 0.5257





			Graphic shift(%)	
Hue Bin	Hue Angle	Rf	Chroma	Hue
1	0.0 - 22.5	74	-11	0
2	22.5 - 45.0	77	-8	8
3	45.0 - 67.5	69	-2	14
4	67.5 - 90.0	84	4	9
5	90.0 - 112.5	88	8	5
6	112.5 - 135.0	89	6	-1
7	135.0 - 157.5	81	0	-10
8	157.5 - 180.0	89	-2	-4
9	180.0 - 202.5	87	-6	-1
10	202.5 - 225.0	85	-5	5
11	225.0 - 247.5	84	0	8
12	247.5 - 270.0	83	4	5
13	270.0 - 292.5	87	3	-6
14	292.5 - 315.0	63	2	-21
15	315.0 - 337.5	82	0	-11
16	337.5 - 360.0	72	-10	-11