

## Report Title

Sample : LED Soft light bar  
Specification : EKF4248213  
Sample No. : WY-GX-2020110301  
Manufacturer :  
Assessor : Chunbo Zhou  
Remark : /

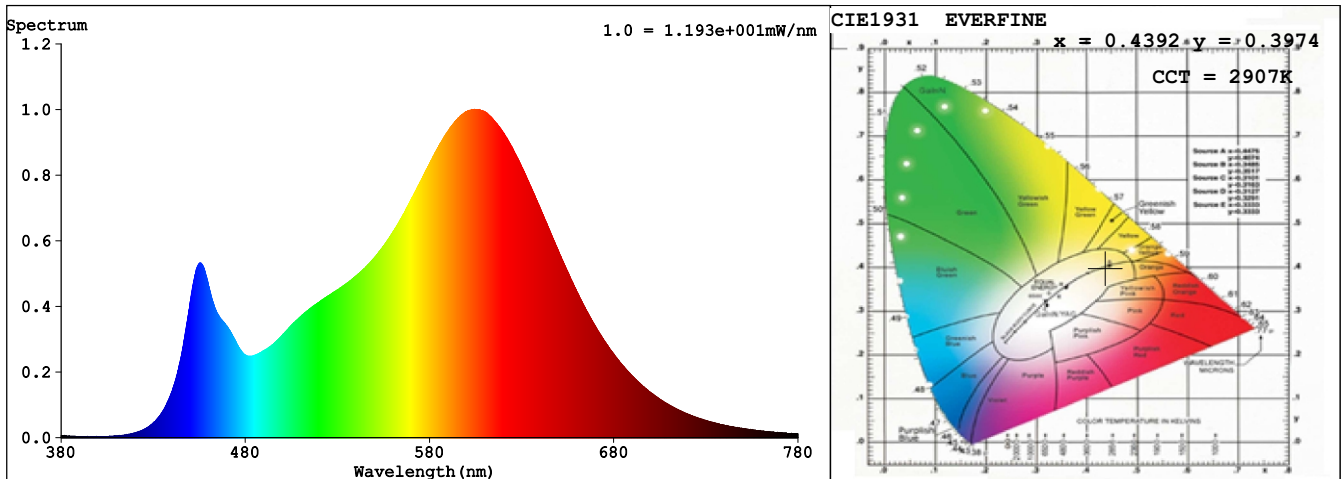
Date : 2020-11-03 12:17:24  
Standardtus : IES LM-79-08  
Instrument : HaasSuite(EVERFINE)  
Test by : Hu Cong

### Test Condition

Temperature : 24.9Deg  
WL Range : 380nm-780nm  
Test Mode : Fast Test  
Sensitivity : High

RH : 41.9%  
IP : 52442 (80%)  
T : 130 ms

### Spectrum



Spectral Distribution

CIE1931 Chromaticity Diagram

### Colorimetric Parameters

Chromaticity Coordinate:  $x = 0.4392$   $y = 0.3974$  /  $u' = 0.2550$   $v' = 0.5191$  ( $duv = -2.96e-03$ )

CCT= 2907K Prcp WL:  $L_d = 584.3\text{nm}$  Purity=51.1%

Peak WL:  $L_p = 604\text{nm}$  FWHM: =113.8nm Ratio:R=24.0% G=73.0% B=3.0%

Render Index:  $R_a = 83.0$  TM30: $R_f = 82$   $R_g = 95$

R1 =83 R2 =95 R3 =91 R4 =80 R5 =84 R6 =94 R7 =79

R8 =57 R9 =9 R10=90 R11=80 R12=78 R13=87 R14=96 R15=75

WHITE:ANSI\_3000K

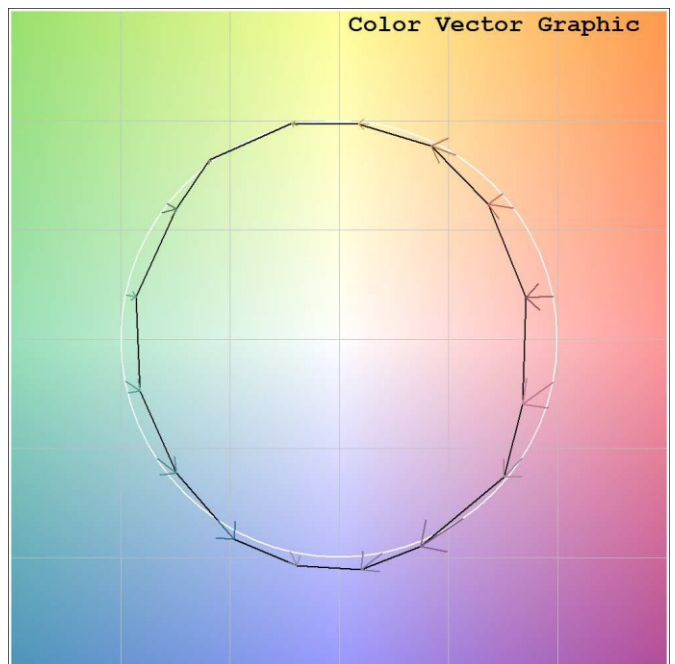
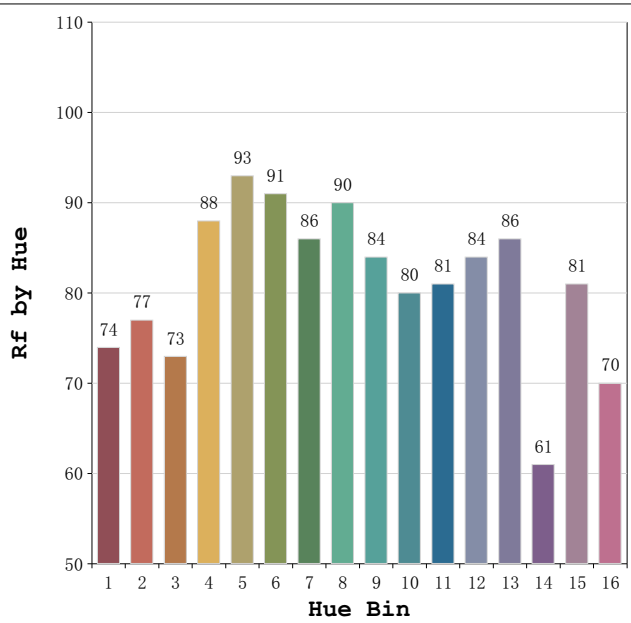
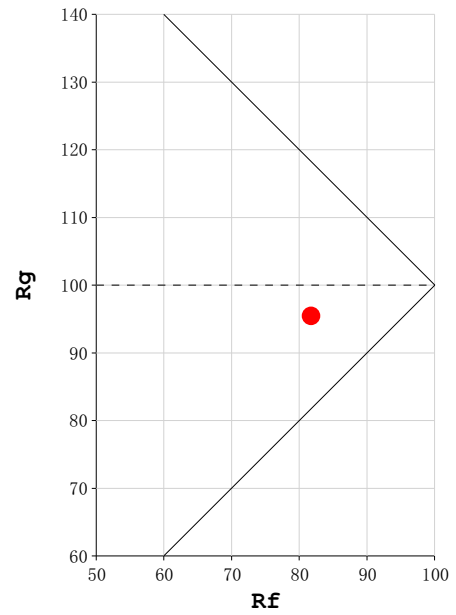
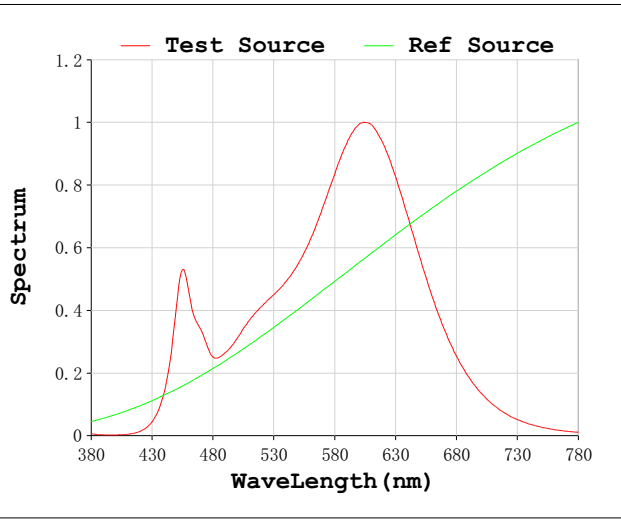
### Photometric & Radiometric Parameters

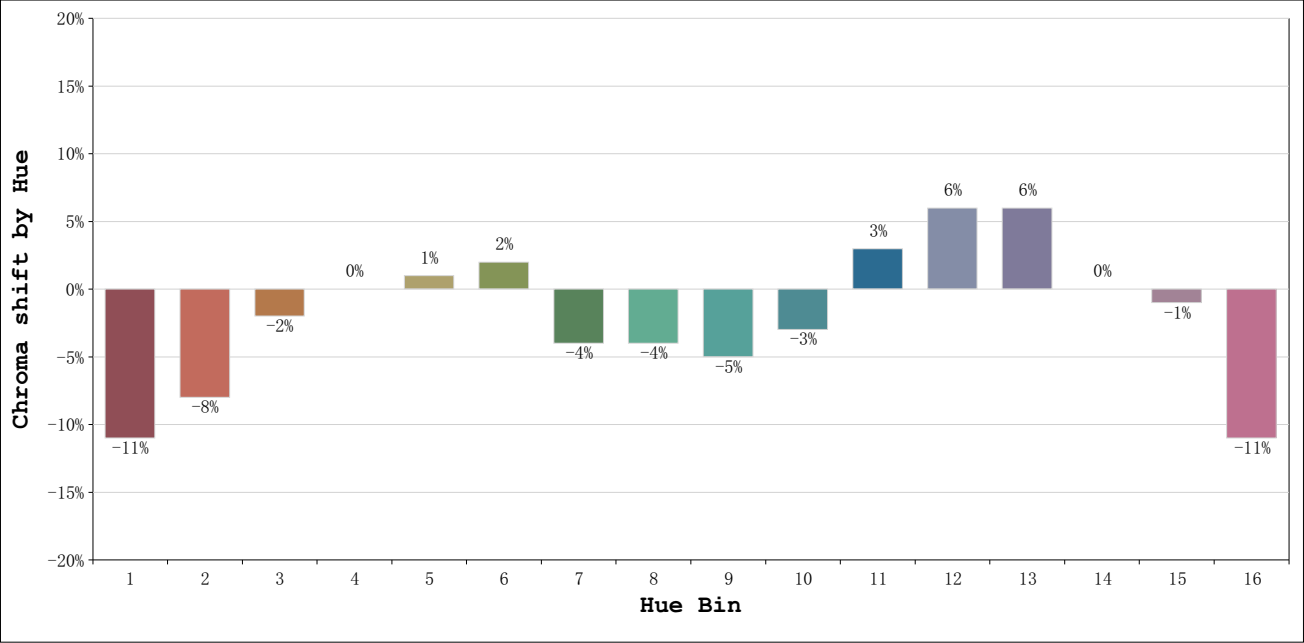
Flux = 555.65 lm Eff. : 99.76 lm/W  $F_e = 1.7109\text{ W}$

### Electrical parameters

V = 12.00 V I = 0.4641 A P = 5.570 W PF = 1.000 F=0.00 Hz

Rf: 82      CCT: 2907 K       $u'$ : 0.2550  
Rg: 95      Duv: -0.0030       $v'$ : 0.5191





			Graphic shift(%)	
Hue Bin	Hue Angle	Rf	Chroma	Hue
1	0.0 - 22.5	74	-11	2
2	22.5 - 45.0	77	-8	8
3	45.0 - 67.5	73	-2	12
4	67.5 - 90.0	88	0	5
5	90.0 - 112.5	93	1	3
6	112.5 - 135.0	91	2	0
7	135.0 - 157.5	86	-4	-4
8	157.5 - 180.0	90	-4	0
9	180.0 - 202.5	84	-5	6
10	202.5 - 225.0	80	-3	10
11	225.0 - 247.5	81	3	11
12	247.5 - 270.0	84	6	4
13	270.0 - 292.5	86	6	-10
14	292.5 - 315.0	61	0	-22
15	315.0 - 337.5	81	-1	-10
16	337.5 - 360.0	70	-11	-12