

## Report Title

Sample : LED Soft light bar  
Specification : EKF42126PRO  
Sample No. : WY-GX-2020102613  
Manufacturer :  
Assessor : Chunbo Zhou  
Remark : /

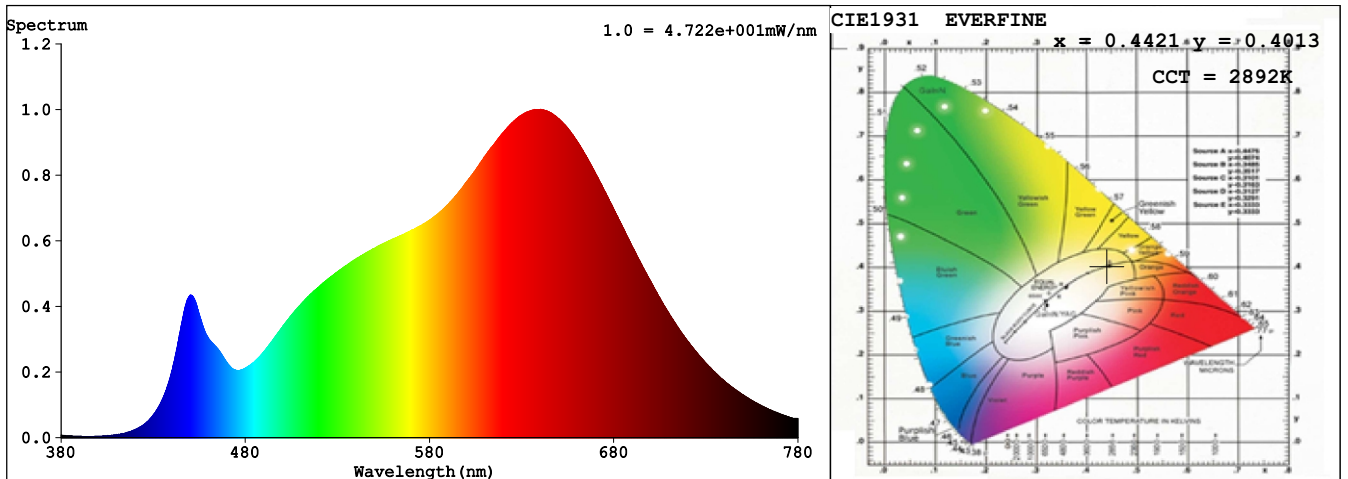
Date : 2020-10-27 15:43:50  
Standard : IES LM-79-08  
Instrument : HaasSuite(EVERFINE)  
Test by : Hu Cong

## Test Condition

Temperature : 25.8Deg  
WL Range : 380nm-780nm  
Test Mode : Fast Test  
Sensitivity : High

RH : 41.9%  
IP : 52010 (79%)  
T : 36 ms

## Spectrum



Spectral Distribution

CIE1931 Chromaticity Diagram

## Colorimetric Parameters

Chromaticity Coordinate:  $x = 0.4421$   $y = 0.4013$  /  $u' = 0.2551$   $v' = 0.5210$  ( $duv = -1.78e-03$ )

CCT= 2892K Prcp WL:  $L_d = 583.9\text{nm}$  Purity=53.1%

Peak WL:  $L_p = 638\text{nm}$  FWHM:  $= 168.9\text{nm}$  Ratio: R=25.8% G=71.3% B=2.9%

Render Index:  $R_a = 98.1$  TM30:  $R_f = 95$   $R_g = 103$

R1 =99 R2 =99 R3 =96 R4 =97 R5 =99 R6 =98 R7 =98

R8 =99 R9 =97 R10=97 R11=95 R12=89 R13=99 R14=96 R15=99

WHITE:ANSI\_3000K

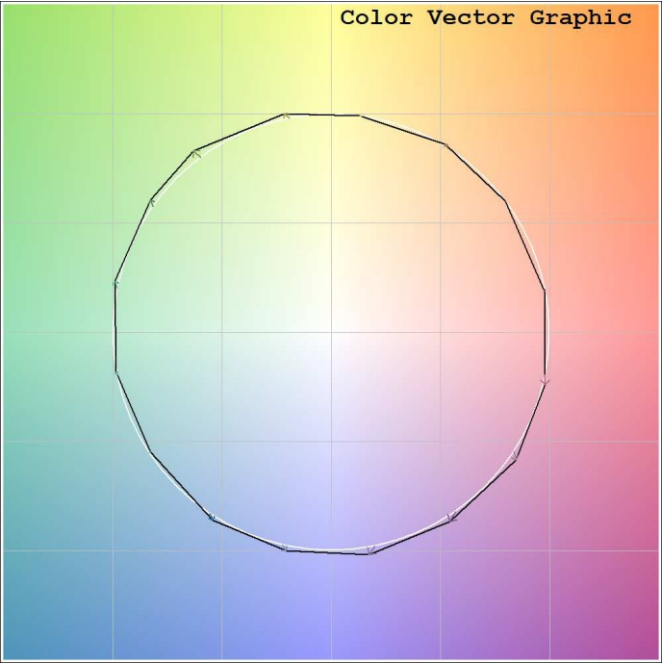
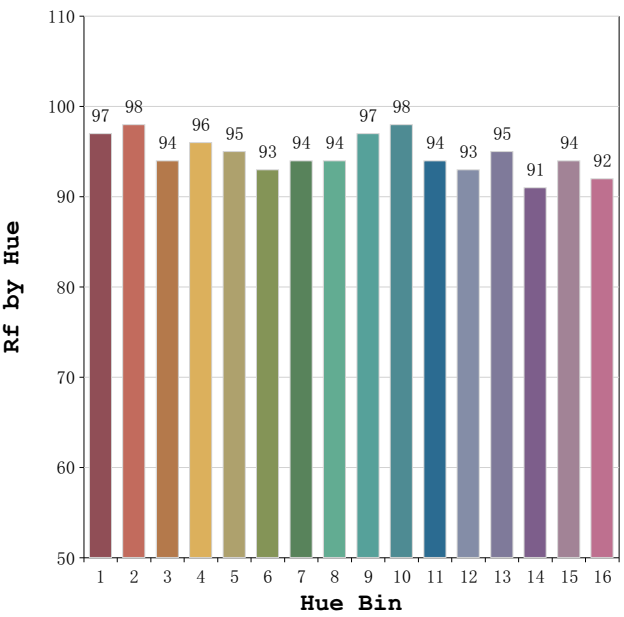
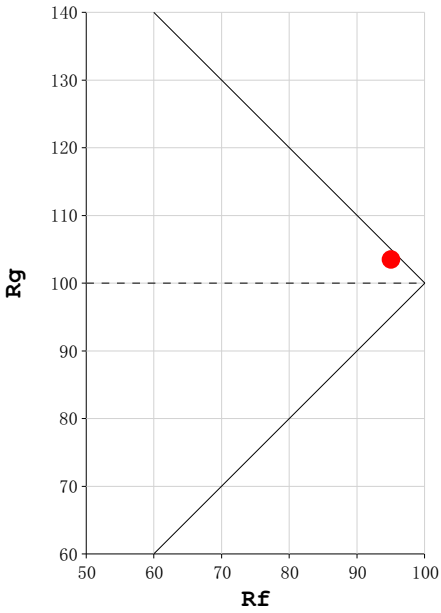
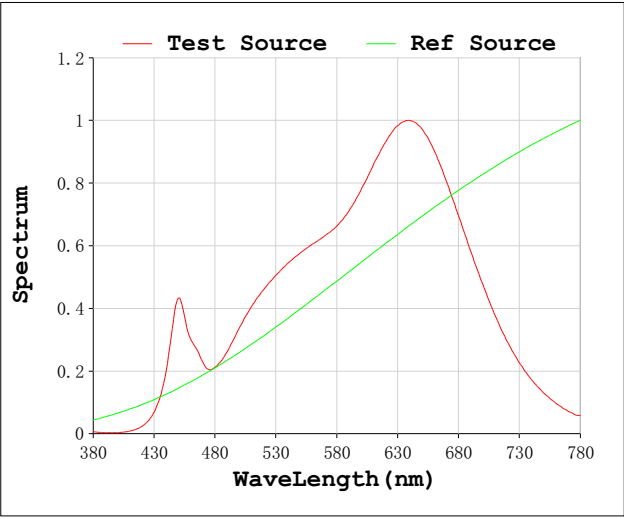
## Photometric & Radiometric Parameters

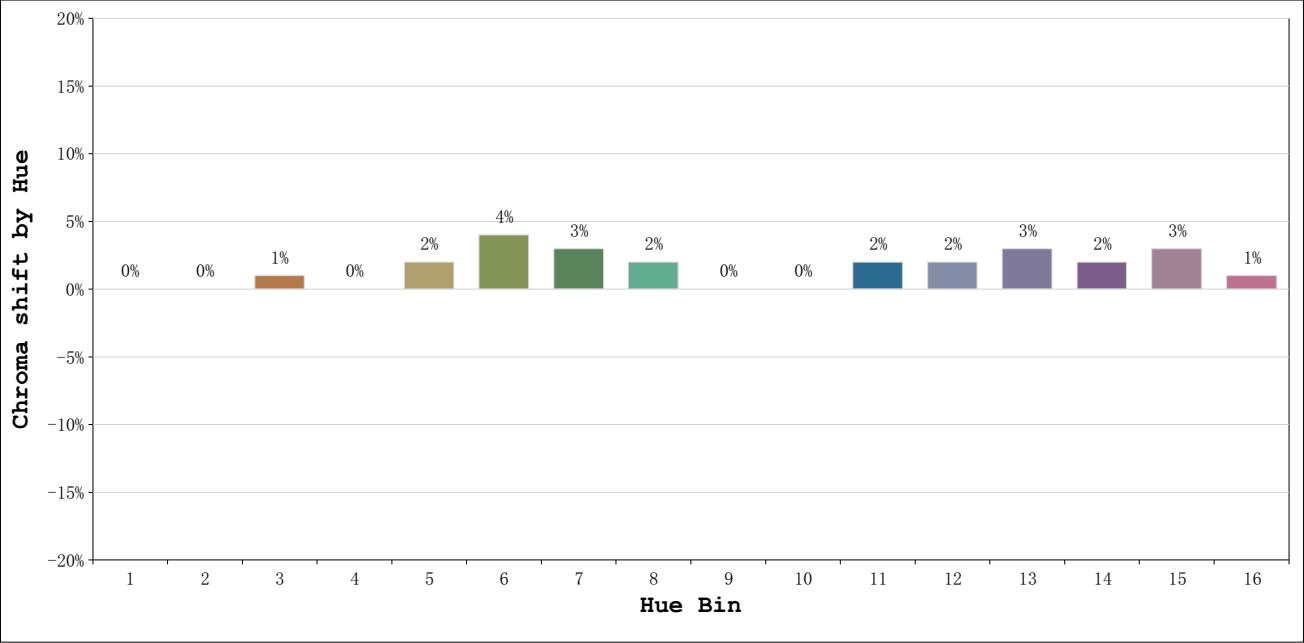
Flux = 2110.1 lm Eff. : 77.75 lm/W  $F_e = 8.2958\text{ W}$

## Electrical parameters

V = 24.00 V I = 1.131 A P = 27.14 W PF = 1.0000 F=0.00 Hz

Rf: 95      CCT: 2892 K       $u'$ : 0.2551  
Rg: 103      Duv: -0.0018       $v'$ : 0.5210





			Graphic shift(%)	
Hue Bin	Hue Angle	Rf	Chroma	Hue
1	0.0 - 22.5	97	0	0
2	22.5 - 45.0	98	0	0
3	45.0 - 67.5	94	1	2
4	67.5 - 90.0	96	0	1
5	90.0 - 112.5	95	2	2
6	112.5 - 135.0	93	4	1
7	135.0 - 157.5	94	3	-1
8	157.5 - 180.0	94	2	-2
9	180.0 - 202.5	97	0	0
10	202.5 - 225.0	98	0	0
11	225.0 - 247.5	94	2	3
12	247.5 - 270.0	93	2	2
13	270.0 - 292.5	95	3	-2
14	292.5 - 315.0	91	2	-4
15	315.0 - 337.5	94	3	-2
16	337.5 - 360.0	92	1	-3