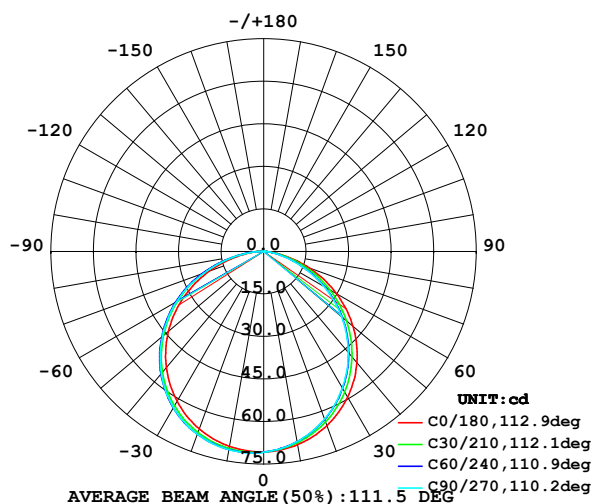


## LUMINAIRE PHOTOMETRIC TEST REPORT

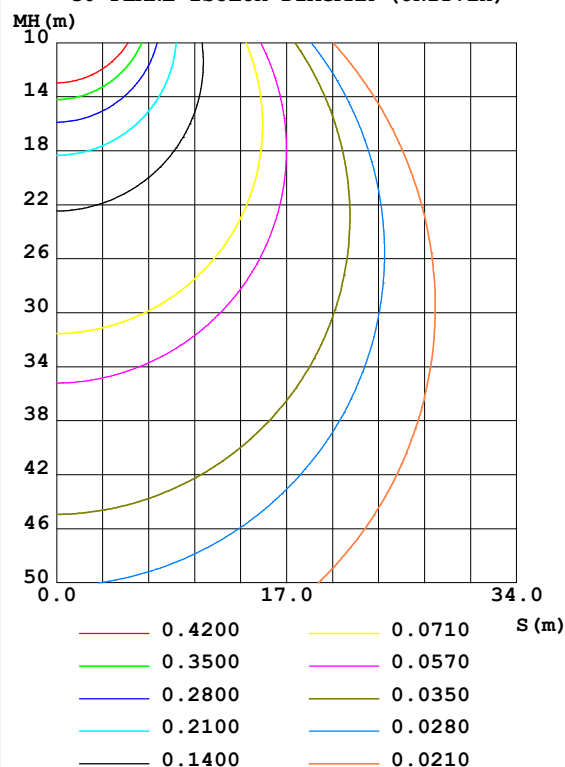
Test:U:24.00V I:0.1136A P:2.726W PF:1.000 Lamp Flux:201.198x1 lm		
NAME: LED Soft light bar	SUR.:1.0m*0.01m	SERIAL No.:WY-PG-2022052502
MFR.: EKLART		

DATA OF LAMP		PHOTOMETRIC DATA Eff: 73.80 lm/W			
MODEL	EKF5RGBW65L	Imax(cd)	71.27	S/MH(C0/180)	1.28
NOMINAL POWER(W)	3	LOR(%)	100.0	S/MH(C90/270)	1.33
RATED VOLTAGE(V)	24	TOTAL FLUX(lm)	201.20	$\eta$ UP,DN(C0-180)	0.3,45.7
NOMINAL FLUX(lm)	201.198	CIE CLASS	DIRECT	$\eta$ UP,DN(C180-360)	0.3,53.7
LAMPS INSIDE	1	$\eta$ up(%)	0.6	CIBSE SHR NOM	1.25
TEST VOLTAGE(V)	24	$\eta$ down(%)	99.4	CIBSE SHR MAX	1.35

LUMINOUS INTENSITY DISTRIBUTION DIAGRAM



C0 PLANE ISOLUX DIAGRAM (UNIT:lx)



C Range: 0 - 360DEG  
C Interval: 15.0DEG  
Test Speed: HIGH  
Temperature: 24.7DEG  
Operators: Lingxin Xie  
Test Date: 2022-05-26

$\gamma$  Range: 0 - 180DEG  
 $\gamma$  Interval: 1.0DEG  
Test System: EVERFINE GO-2000A\_V1 SYSTEM V2.0.291  
Humidity: 54.2%  
Test Distance: 10.149m [K=1.0000]  
Remarks:

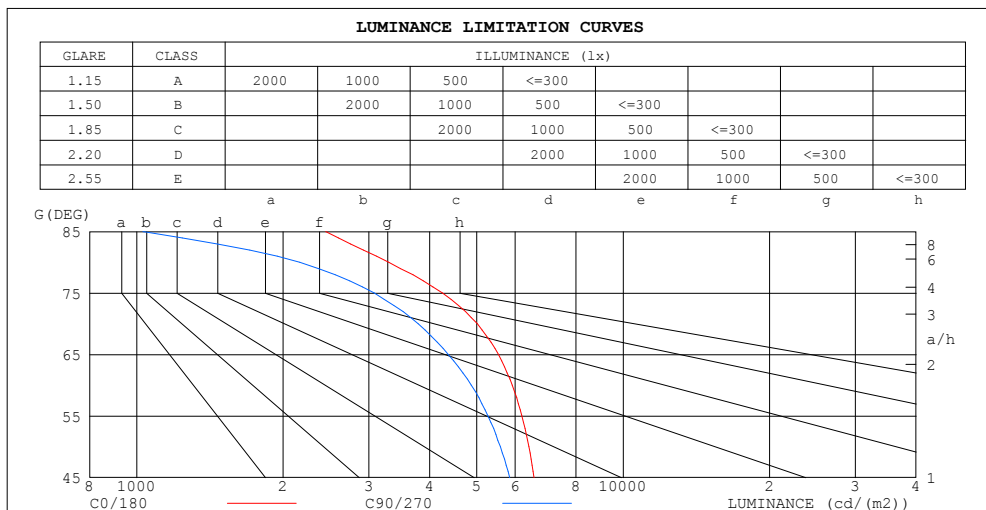
Checker: Jianfei Wu

Assessor: Lijian Jiang

### ZONAL FLUX DIAGRAM AND LUMINANCE LIMITATION CURVES

#### ZONAL FLUX DIAGRAM:

$\gamma$	C0	C45	C90	C135	C180	C225	C270	C315	$\gamma$	$\Phi$ zone	$\Phi$ total	%lum, lamp
10	69.16	68.32	68.06	68.83	69.76	70.80	70.96	70.39	0- 10	6.699	6.699	3.33,3.33
20	65.33	63.48	62.89	64.54	66.55	68.29	68.56	67.43	10- 20	19.20	25.90	12.9,12.9
30	59.30	56.39	55.57	57.89	61.04	63.37	63.64	62.12	20- 30	29.12	55.02	27.3,27.3
40	51.18	47.51	46.45	49.38	53.43	56.08	56.16	54.42	30- 40	35.10	90.13	44.8,44.8
50	41.16	37.23	35.93	39.37	43.90	46.62	46.59	44.51	40- 50	36.30	126.4	62.8,62.8
60	29.56	25.89	24.36	28.28	32.71	35.57	35.49	33.04	50- 60	32.52	158.9	79,79
70	17.14	14.19	12.95	16.60	20.41	23.20	22.56	20.40	60- 70	24.30	183.2	91.1,91.1
80	5.722	4.295	3.756	6.075	8.409	10.17	9.970	8.025	70- 80	13.26	196.5	97.7,97.7
90	0.4766	0.1649	0.0656	0.5132	1.132	1.411	0.0192	0.8285	80- 90	3.560	200.1	99.4,99.4
100	0.0704	0.0961	0.0897	0.0900	0.0640	0.0576	0.0514	0.0576	90-100	0.1975	200.3	99.5,99.5
110	0.0897	0.1346	0.0897	0.1325	0.1087	0.0833	0.0961	0.0895	100-110	0.0924	200.4	99.6,99.6
120	0.1473	0.1896	0.1681	0.1769	0.1473	0.0832	0.1346	0.0961	110-120	0.1208	200.5	99.6,99.6
130	0.1844	0.2306	0.2044	0.2305	0.1795	0.1537	0.1844	0.1634	120-130	0.1508	200.6	99.7,99.7
140	0.2177	0.2753	0.2816	0.2665	0.2306	0.1911	0.2199	0.1857	130-140	0.1645	200.8	99.8,99.8
150	0.2779	0.3012	0.3007	0.3009	0.2755	0.2369	0.2626	0.2623	140-150	0.1592	200.9	99.9,99.9
160	0.3010	0.3052	0.3008	0.3104	0.3094	0.2881	0.3073	0.3005	150-160	0.1346	201.1	99.9,99.9
170	0.3010	0.3027	0.3009	0.3161	0.3160	0.3010	0.3164	0.2970	160-170	0.0865	201.2	100,100
180	0.3010	0.3010	0.3010	0.3202	0.3138	0.3010	0.3202	0.3010	170-180	0.0294	201.2	100,100
DEG	LUMINOUS INTENSITY:cd									UNIT:lm		



LUMINANCE cd/(m2)		
G (DEG)	C0/180	C90/270
85	2444	1029
80	3295	2163
75	4254	3078
70	5012	3788
65	5545	4371
60	5913	4872
55	6193	5274
50	6403	5590
45	6560	5846

C Range: 0 - 360DEG  
C Interval: 15.0DEG  
Test Speed: HIGH  
Temperature:24.7DEG  
Operators:Lingxin Xie  
Test Date:2022-05-26

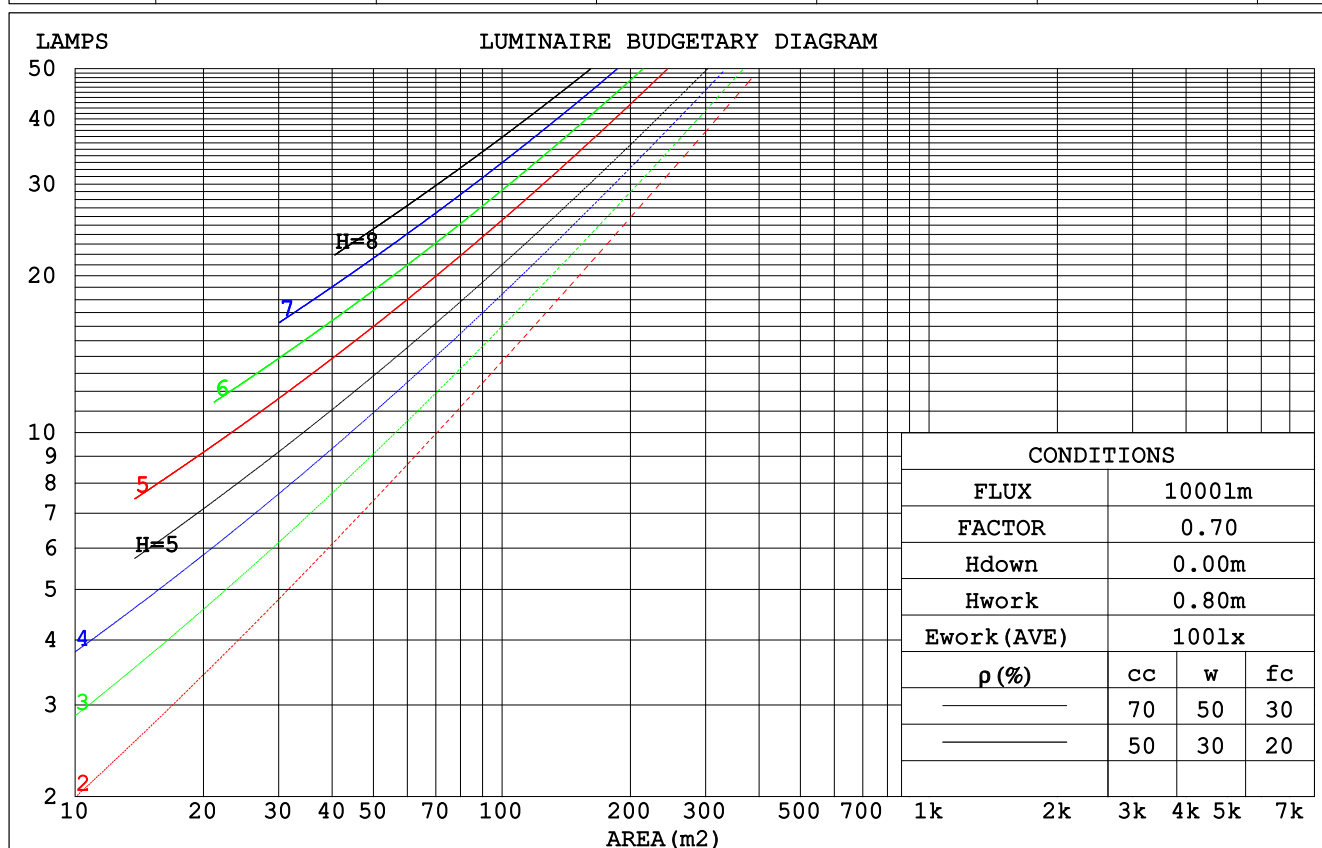
$\gamma$  Range: 0 - 180DEG  
 $\gamma$  Interval: 1.0DEG  
Test System:EVERFINE GO-2000A\_V1 SYSTEM V2.0.291  
Humidity:54.2%  
Test Distance:10.149m [K=1.0000]  
Remarks:

Checker: Jianfei Wu

Assessor: Lijian Jiang

## CU AND LUMINAIRE BUDGETARY ESTIMATE DIAGRAM

pcc	80%			70%			50%			30%			10%			0
pw	50%	30%	10%	50%	30%	10%	50%	30%	10%	50%	30%	10%	50%	30%	10%	0
pfc	20%			20%			20%			20%			20%			0
RCR	RCR:Room Cavity Ratio						Coefficients of Utilization(CU)									
0.0	1.19	1.19	1.19	1.16	1.16	1.16	1.11	1.11	1.11	1.06	1.06	1.06	1.02	1.02	1.02	.99
1.0	1.04	.00	.96	1.02	.98	.94	.97	.94	.91	.93	.91	.88	.90	.87	.86	.83
2.0	.91	.84	.78	.89	.82	.77	.85	.80	.75	.82	.77	.73	.79	.75	.72	.69
3.0	.80	.71	.65	.78	.70	.64	.75	.68	.63	.72	.67	.62	.69	.65	.61	.59
4.0	.70	.62	.55	.69	.61	.55	.67	.59	.54	.64	.58	.53	.62	.57	.52	.50
5.0	.63	.54	.47	.62	.53	.47	.60	.52	.46	.58	.51	.46	.56	.50	.45	.43
6.0	.57	.48	.41	.56	.47	.41	.54	.46	.41	.52	.45	.40	.50	.44	.40	.38
7.0	.51	.43	.36	.50	.42	.36	.49	.41	.36	.47	.41	.36	.46	.40	.35	.33
8.0	.47	.38	.32	.46	.38	.32	.45	.37	.32	.43	.37	.32	.42	.36	.32	.30
9.0	.43	.35	.29	.42	.34	.29	.41	.34	.29	.40	.33	.29	.39	.33	.29	.27
10.0	.40	.32	.26	.39	.31	.26	.38	.31	.26	.37	.31	.26	.36	.30	.26	.24



C Range: 0 - 360DEG  
 C Interval: 15.0DEG  
 Test Speed: HIGH  
 Temperature: 24.7DEG  
 Operators: Lingxin Xie  
 Test Date: 2022-05-26

γ Range: 0 - 180DEG  
 γ Interval: 1.0DEG  
 Test System: EVERFINE GO-2000A\_V1 SYSTEM V2.0.291  
 Humidity: 54.2%  
 Test Distance: 10.149m [K=1.0000]  
 Remarks:

Checker: Jianfei Wu

Assessor: Lijian Jiang

## WEC AND CCEC

pcc	80%			70%			50%			30%			10%			0
pw	50%	30%	10%	50%	30%	10%	50%	30%	10%	50%	30%	10%	50%	30%	10%	0
pfc	20%			20%			20%			20%			20%			0
RCR	RCR:Room Cavity Ratio						Wall Exitance Coefficients (WEC)									
0.0																
1.0	.306	.174	.055	.299	.170	.054	.285	.164	.052	.273	.157	.051	.261	.151	.049	
2.0	.289	.158	.049	.283	.156	.048	.271	.150	.047	.260	.146	.046	.249	.141	.044	
3.0	.268	.143	.043	.262	.140	.042	.252	.136	.041	.242	.133	.041	.233	.129	.040	
4.0	.248	.129	.038	.243	.127	.038	.233	.124	.037	.224	.121	.036	.216	.118	.036	
5.0	.229	.117	.034	.225	.115	.034	.216	.113	.033	.209	.110	.033	.201	.108	.032	
6.0	.213	.107	.031	.209	.105	.030	.201	.103	.030	.194	.101	.030	.188	.099	.029	
7.0	.198	.098	.028	.194	.097	.028	.188	.095	.027	.182	.093	.027	.176	.091	.027	
8.0	.185	.090	.025	.182	.090	.025	.176	.088	.025	.170	.086	.025	.165	.085	.025	
9.0	.173	.084	.023	.171	.083	.023	.165	.082	.023	.160	.080	.023	.155	.079	.023	
10.0	.163	.078	.022	.161	.078	.022	.156	.076	.021	.151	.075	.021	.147	.074	.021	

pcc	80%			70%			50%			30%			10%			0	
pw	50%	30%	10%	50%	30%	10%	50%	30%	10%	50%	30%	10%	50%	30%	10%	0	
pfc	20%			20%			20%			20%			20%			0	
RCR	RCR:Room Cavity Ratio						Ceiling Cavity Exitance Coefficients (CCEC)										
0.0	.195	.195	.195	.166	.166	.166	.114	.114	.114	.065	.065	.065	.021	.021	.021		
1.0	.184	.161	.139	.158	.138	.120	.108	.095	.083	.062	.055	.048	.020	.018	.016		
2.0	.176	.136	.103	.151	.117	.089	.103	.081	.062	.060	.047	.036	.019	.015	.012		
3.0	.168	.119	.079	.144	.102	.068	.099	.071	.048	.057	.042	.028	.018	.013	.009		
4.0	.161	.105	.063	.138	.091	.055	.095	.063	.039	.055	.037	.023	.018	.012	.007		
5.0	.153	.095	.052	.132	.082	.045	.091	.057	.032	.053	.034	.019	.017	.011	.006		
6.0	.146	.087	.044	.126	.075	.038	.087	.052	.027	.050	.031	.016	.016	.010	.005		
7.0	.140	.080	.038	.120	.069	.033	.083	.048	.023	.048	.029	.014	.016	.009	.005		
8.0	.133	.074	.033	.115	.064	.029	.079	.045	.021	.046	.027	.012	.015	.009	.004		
9.0	.127	.069	.030	.109	.060	.026	.076	.042	.018	.044	.025	.011	.014	.008	.004		
10.0	.121	.065	.027	.105	.056	.024	.073	.040	.017	.042	.023	.010	.014	.008	.003		

C Range: 0 - 360DEG  
 C Interval: 15.0DEG  
 Test Speed: HIGH  
 Temperature:24.7DEG  
 Operators:Lingxin Xie  
 Test Date:2022-05-26

γ Range: 0 - 180DEG  
 γ Interval: 1.0DEG  
 Test System:EVERFINE GO-2000A\_V1 SYSTEM V2.0.291  
 Humidity:54.2%  
 Test Distance:10.149m [K=1.0000]  
 Remarks:

Checker: Jianfei Wu

Assessor: Lijian Jiang

UGR(Unified Glare Rating) Table

ceiling/cavity	0.7	0.7	0.5	0.5	0.3	0.7	0.7	0.5	0.5	0.3
walls	0.5	0.3	0.5	0.3	0.3	0.5	0.3	0.5	0.3	0.3
working plane	0.2	0.2	0.2	0.2	0.2	0.2	0.2	0.2	0.2	0.2
Room dimensions	Viewed crosswise					Viewed endwise				
x = 2H y = 2H	18.7	20.2	19.0	20.4	20.7	18.0	19.5	18.3	19.7	19.9
3H	20.1	21.5	20.4	21.7	22.0	19.1	20.5	19.4	20.7	21.0
4H	20.6	21.9	20.9	22.2	22.4	19.4	20.7	19.7	21.0	21.3
6H	20.8	22.1	21.2	22.4	22.7	19.6	20.8	19.9	21.1	21.4
8H	20.9	22.1	21.2	22.4	22.7	19.6	20.8	19.9	21.1	21.4
12H	20.9	22.1	21.3	22.4	22.7	19.5	20.7	19.9	21.0	21.3
4H 2H	19.1	20.5	19.5	20.7	21.0	18.6	19.9	18.9	20.1	20.4
3H	20.7	21.8	21.0	22.1	22.5	19.8	20.9	20.1	21.2	21.6
4H	21.3	22.3	21.6	22.6	23.0	20.2	21.3	20.6	21.6	21.9
6H	21.6	22.6	22.0	22.9	23.3	20.4	21.4	20.8	21.7	22.1
8H	21.7	22.6	22.2	23.0	23.4	20.5	21.3	20.9	21.7	22.1
12H	21.8	22.6	22.2	23.0	23.4	20.4	21.2	20.9	21.6	22.1
8H 4H	21.4	22.2	21.8	22.6	23.0	20.4	21.3	20.8	21.6	22.0
6H	21.8	22.6	22.3	23.0	23.4	20.7	21.4	21.1	21.8	22.3
8H	22.0	22.6	22.4	23.1	23.5	20.7	21.4	21.2	21.8	22.3
12H	22.1	22.6	22.6	23.1	23.6	20.8	21.3	21.2	21.8	22.3
12H 4H	21.3	22.1	21.8	22.5	22.9	20.4	21.2	20.8	21.6	22.0
6H	21.8	22.5	22.3	22.9	23.4	20.7	21.3	21.2	21.8	22.2
8H	22.0	22.5	22.5	23.0	23.5	20.8	21.3	21.3	21.8	22.3
Variations with the observer position at spacings:										
S = 1.0H	+ 0.2 / - 0.2					+ 0.2 / - 0.3				
1.5H	+ 0.2 / - 0.3					+ 0.2 / - 0.4				
2.0H	+ 0.4 / - 0.4					+ 0.4 / - 0.4				

CIE Pub.117 Corrected 201.2 lm Total Lamp Luminous Flux.(8log(F/F0) = -5.6)

C Range: 0 - 360DEG  
 C Interval: 15.0DEG  
 Test Speed: HIGH  
 Temperature:24.7DEG  
 Operators:Lingxin Xie  
 Test Date:2022-05-26

Checker: Jianfei Wu

γ Range: 0 - 180DEG  
 γ Interval: 1.0DEG  
 Test System:EVERFINE GO-2000A\_V1 SYSTEM V2.0.291  
 Humidity:54.2%  
 Test Distance:10.149m [K=1.0000]  
 Remarks:

Assessor: Lijian Jiang

## UTILIZATION FACTORS TABLE

REFLECTANCE										
Ceiling	0.8	0.8	0.8	0.7	0.7	0.7	0.5	0.5	0.5	0
Walls	0.7	0.5	0.3	0.7	0.5	0.3	0.7	0.5	0.3	0
Working plane	0.2	0.2	0.2	0.2	0.2	0.2	0.2	0.2	0.2	0
ROOM INDEX	UTILIZATION FACTORS (PERCENT) $k(RI) \times RCR = 5$									
$k = 0.60$	58	46	39	57	46	39	56	45	39	32
0.80	68	56	49	67	56	49	65	55	48	41
1.00	76	65	58	75	64	57	73	66	57	50
1.25	83	73	66	82	72	65	79	71	64	57
1.50	88	78	71	86	77	71	83	76	70	62
2.00	95	87	80	93	85	79	90	83	78	70
2.50	99	91	85	97	90	84	93	87	82	74
3.00	102	95	90	100	94	89	96	91	87	78
4.00	106	101	96	104	99	95	99	95	92	83
5.00	109	104	100	106	102	98	102	98	95	86
ROOM INDEX	UF (total)									Direct
According to DIN EN 13032-2 2004			Suspended					SHRNOM = 1.25		

C Range: 0 - 360DEG  
 C Interval: 15.0DEG  
 Test Speed: HIGH  
 Temperature: 24.7DEG  
 Operators: Lingxin Xie  
 Test Date: 2022-05-26

Checker: Jianfei Wu

$\gamma$  Range: 0 - 180DEG  
 $\gamma$  Interval: 1.0DEG  
 Test System: EVERFINE GO-2000A\_V1 SYSTEM V2.0.291  
 Humidity: 54.2%  
 Test Distance: 10.149m [K=1.0000]  
 Remarks:

Assessor: Lijian Jiang

## ISOCANDELA DIAGRAM

Conical surface Flux(90deg):

108.44 lm

%lum = 53.9%

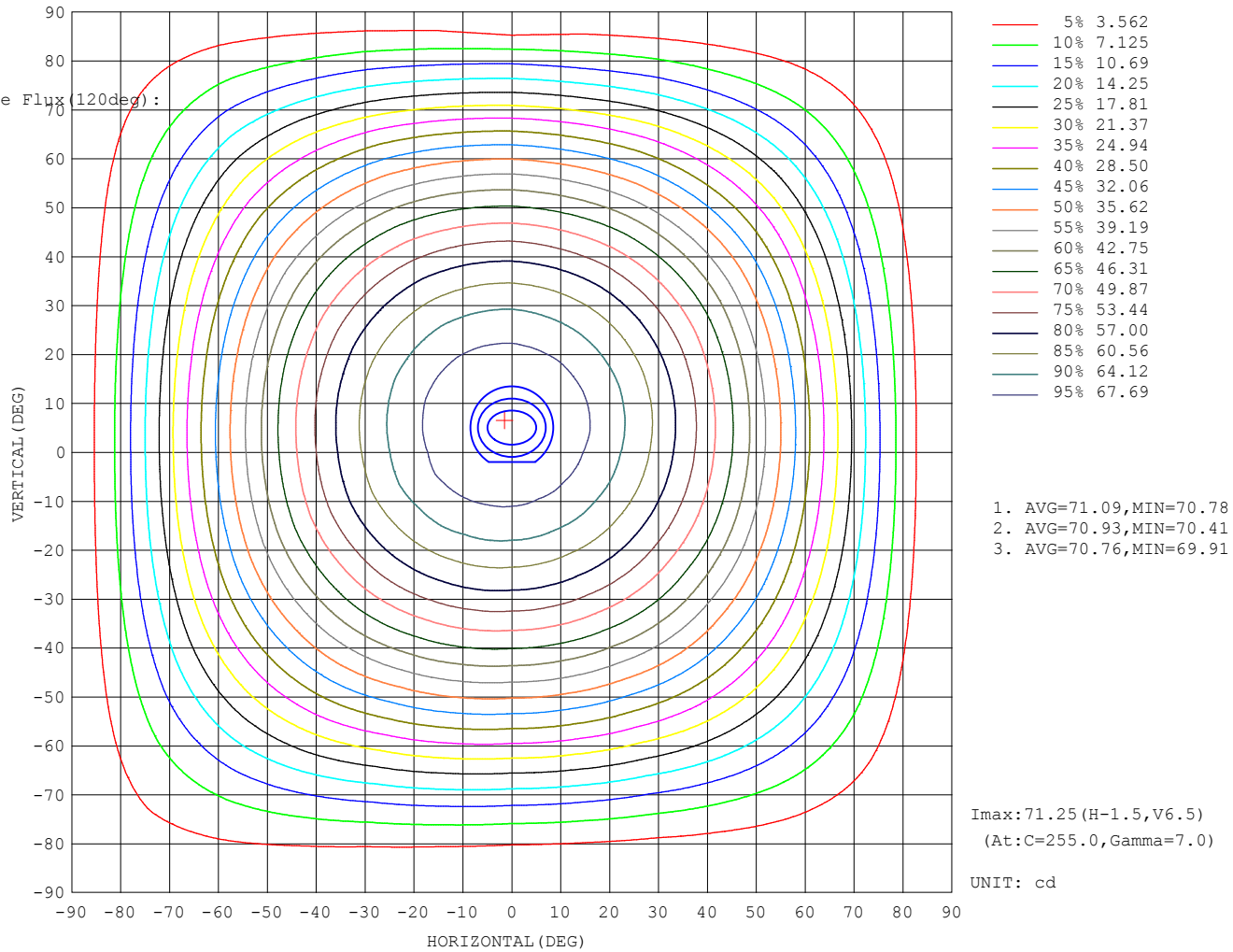
%lamp = 53.9%

Conical surface Flux(120deg):

158.94 lm

%lum = 79.0%

%lamp = 79.0%



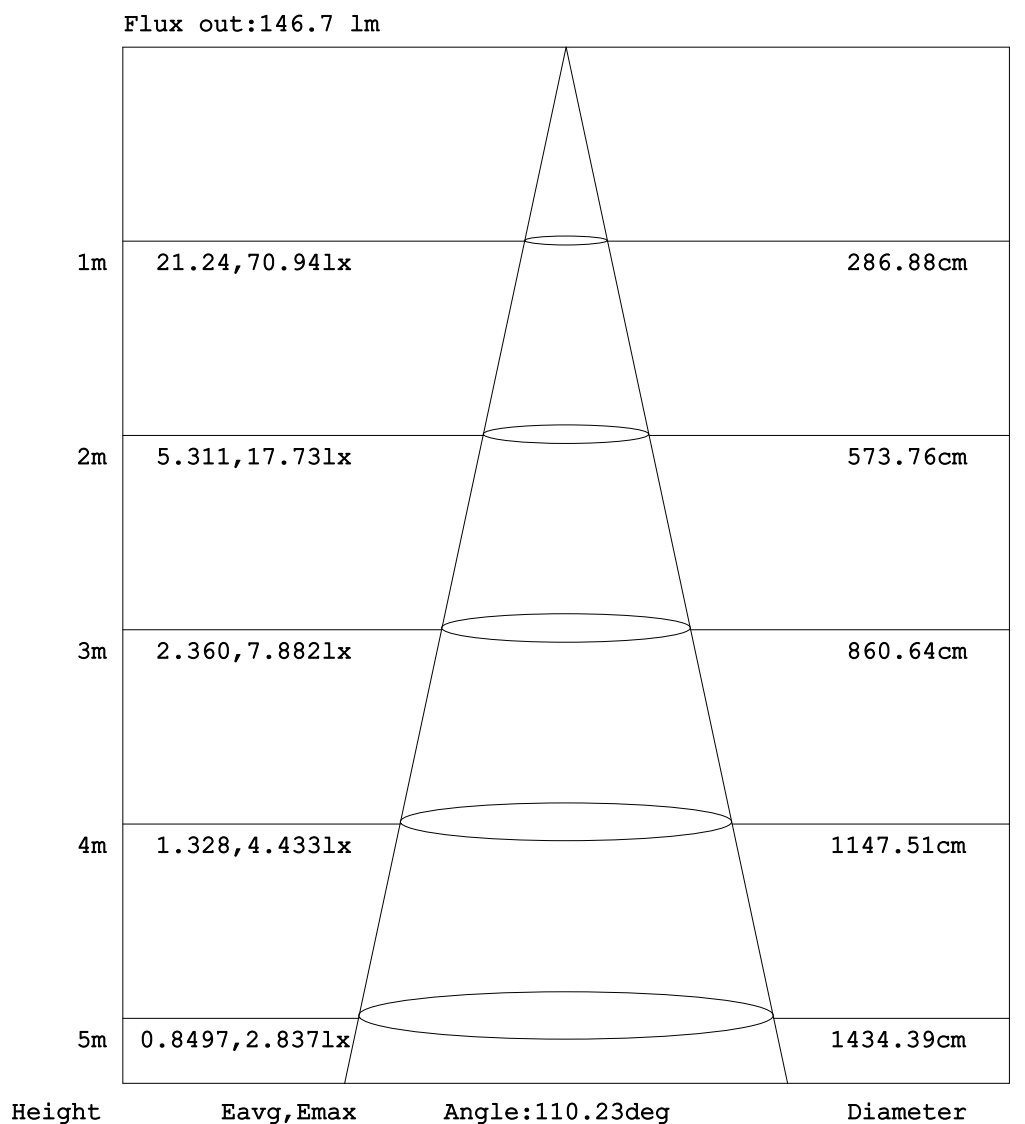
C Range: 0 - 360DEG  
C Interval: 15.0DEG  
Test Speed: HIGH  
Temperature:24.7DEG  
Operators:Lingxin Xie  
Test Date:2022-05-26

$\gamma$  Range: 0 - 180DEG  
 $\gamma$  Interval: 1.0DEG  
Test System:EVERFINE GO-2000A\_V1 SYSTEM V2.0.291  
Humidity:54.2%  
Test Distance:10.149m [K=1.0000]  
Remarks:

Checker: Jianfei Wu

Assessor: Lijian Jiang

## AAI Figure



Note: The Curves indicate the illuminated area and the average illumination when the luminaire is at different distance.

C Range: 0 - 360DEG  
C Interval: 15.0DEG  
Test Speed: HIGH  
Temperature: 24.7DEG  
Operators: Lingxin Xie  
Test Date: 2022-05-26

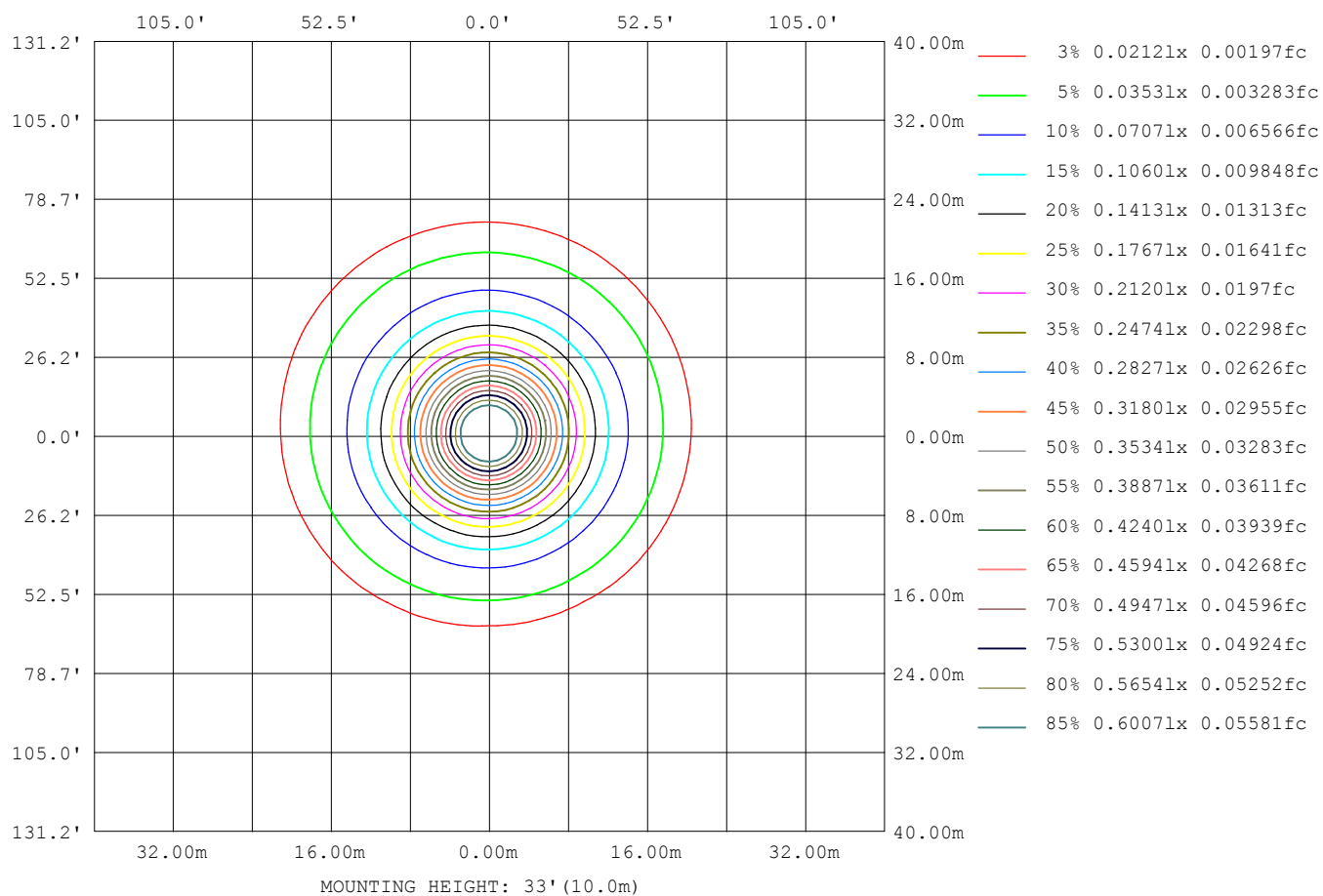
$\gamma$  Range: 0 - 180DEG  
 $\gamma$  Interval: 1.0DEG  
Test System: EVERFINE GO-2000A\_V1 SYSTEM V2.0.291  
Humidity: 54.2%  
Test Distance: 10.149m [K=1.0000]  
Remarks:

Checker: Jianfei Wu

Assessor: Lijian Jiang



## ISOLUX DIAGRAM



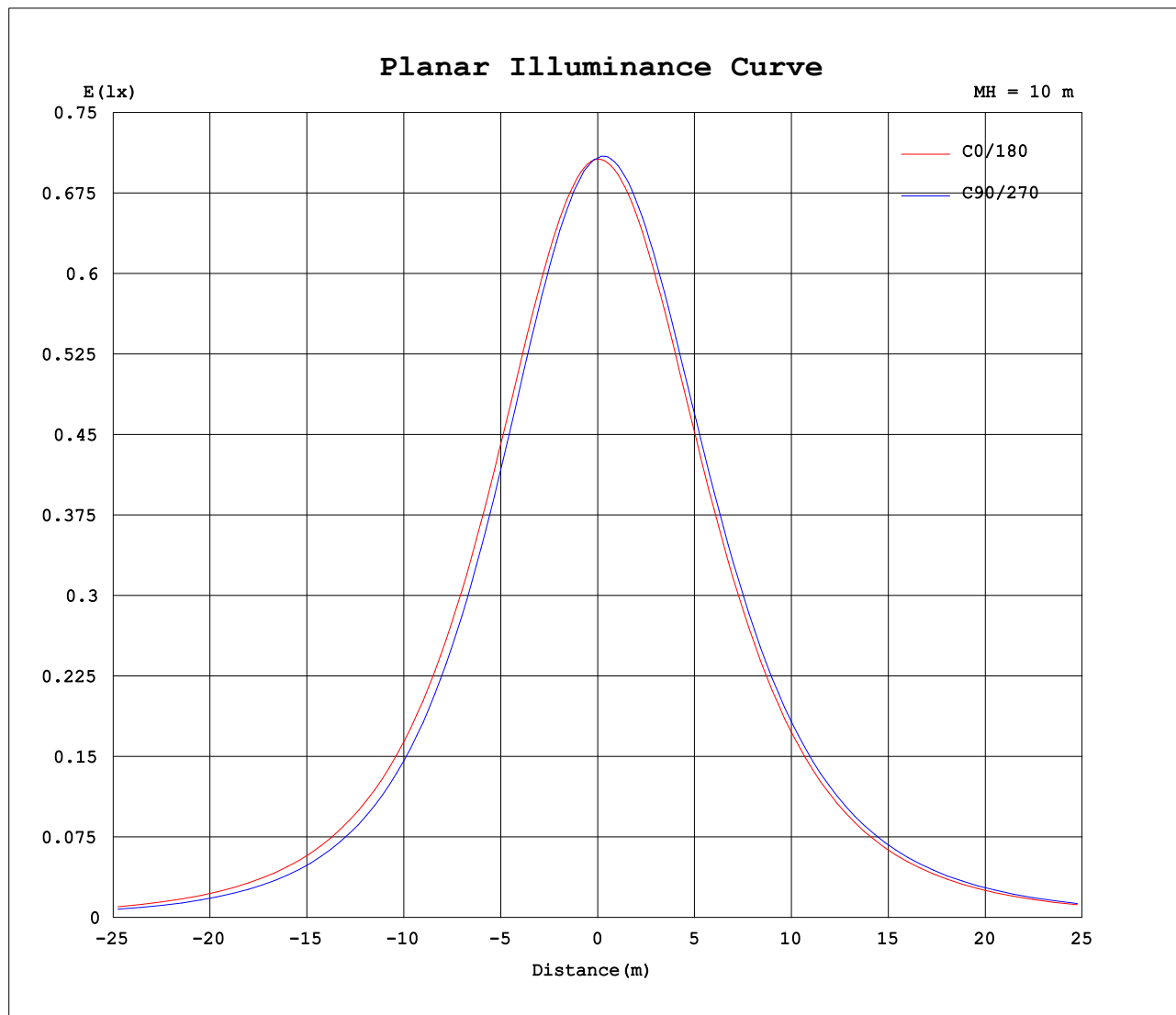
C Range: 0 - 360DEG  
C Interval: 15.0DEG  
Test Speed: HIGH  
Temperature: 24.7DEG  
Operators: Lingxin Xie  
Test Date: 2022-05-26

Checker: Jianfei Wu

$\gamma$  Range: 0 - 180DEG  
 $\gamma$  Interval: 1.0DEG  
Test System: EVERFINE GO-2000A\_V1 SYSTEM V2.0.291  
Humidity: 54.2%  
Test Distance: 10.149m [K=1.0000]  
Remarks:

Assessor: Lijian Jiang

## Planar Illuminance Curve



C Range: 0 - 360DEG  
C Interval: 15.0DEG  
Test Speed: HIGH  
Temperature: 24.7DEG  
Operators: Lingxin Xie  
Test Date: 2022-05-26

Checker: Jianfei Wu

$\gamma$  Range: 0 - 180DEG  
 $\gamma$  Interval: 1.0DEG  
Test System: EVERFINE GO-2000A\_V1 SYSTEM V2.0.291  
Humidity: 54.2%  
Test Distance: 10.149m [K=1.0000]  
Remarks:

Assessor: Lijian Jiang

## LUMINOUS DISTRIBUTION INTENSITY DATA

Table--1

UNIT: cd

C (DEG) γ (DEG)	0	15	30	45	60	75	90	105	120	135	150	165	180	195	210	225	240	255	270
0	70.7	70.7	70.7	70.7	70.8	70.8	70.7	70.8	70.9	70.8	70.9	70.9	70.7	70.7	70.7	70.7	70.8	70.8	70.7
5	70.2	70.0	69.9	69.8	69.7	69.7	69.7	69.8	70.0	70.1	70.4	70.6	70.5	70.7	70.9	71.1	71.2	71.2	71.2
10	69.2	68.9	68.5	68.3	68.1	68.1	68.1	68.3	68.5	68.8	69.3	69.7	69.8	70.2	70.5	70.8	70.9	71.0	71.0
15	67.5	67.0	66.5	66.2	65.8	65.8	65.8	66.1	66.4	67.0	67.5	68.2	68.4	69.0	69.5	69.9	70.0	70.1	70.1
20	65.3	64.7	63.9	63.5	63.0	62.9	62.9	63.3	63.7	64.5	65.2	66.1	66.6	67.3	67.9	68.3	68.6	68.6	68.6
25	62.6	61.7	60.8	60.2	59.6	59.5	59.5	59.9	60.6	61.5	62.4	63.5	64.1	64.9	65.7	66.1	66.5	66.5	66.4
30	59.3	58.2	57.2	56.4	55.7	55.5	55.6	56.1	56.8	57.9	59.0	60.3	61.0	62.1	62.9	63.4	63.7	63.7	63.6
35	55.5	54.3	53.0	52.1	51.4	51.2	51.2	51.8	52.6	53.9	55.1	56.6	57.5	58.6	59.5	60.0	60.4	60.4	60.2
40	51.2	49.8	48.5	47.5	46.7	46.4	46.4	47.1	48.1	49.4	50.8	52.4	53.4	54.6	55.6	56.1	56.4	56.4	56.2
45	46.4	44.9	43.5	42.5	41.6	41.3	41.3	42.1	43.1	44.6	46.0	47.7	48.9	50.1	51.1	51.6	51.9	51.8	51.6
50	41.2	39.7	38.2	37.2	36.3	35.9	35.9	36.8	37.8	39.4	40.9	42.6	43.9	45.2	46.2	46.6	46.9	46.8	46.6
55	35.5	34.1	32.6	31.7	30.6	30.3	30.2	31.2	32.2	33.9	35.4	37.2	38.5	39.8	40.8	41.2	41.6	41.5	41.2
60	29.6	28.1	26.9	25.9	24.7	24.4	24.4	25.3	26.5	28.3	29.7	31.4	32.7	34.0	35.1	35.6	35.9	35.7	35.5
65	23.4	22.2	21.1	20.0	18.8	18.5	18.5	19.4	20.6	22.5	24.0	25.4	26.6	27.9	29.0	29.5	29.9	29.6	29.3
70	17.1	16.2	15.3	14.2	13.1	12.9	13.0	13.8	14.8	16.6	18.2	19.5	20.4	21.7	22.8	23.2	23.3	22.9	22.6
75	11.0	10.6	9.77	8.82	8.04	7.89	7.97	8.63	9.52	11.0	12.5	13.6	14.2	15.3	16.3	16.6	16.5	16.2	15.9
80	5.72	5.53	4.97	4.30	3.77	3.67	3.76	4.25	4.95	6.08	7.30	8.18	8.41	9.27	10.1	10.2	10.4	10.1	9.97
85	2.13	2.10	1.71	1.32	0.96	0.87	0.90	1.21	1.66	2.44	3.23	3.86	3.83	4.36	4.85	4.94	5.03	4.80	3.81
90	0.48	0.46	0.35	0.16	0.13	0.08	0.07	0.08	0.25	0.51	0.88	1.19	1.13	1.38	1.55	1.41	1.21	0.75	0.02
95	0.09	0.08	0.08	0.08	0.07	0.07	0.06	0.07	0.07	0.08	0.13	0.16	0.16	0.25	0.23	0.18	0.08	0.04	0.03
100	0.07	0.09	0.08	0.10	0.08	0.09	0.09	0.09	0.09	0.09	0.08	0.08	0.06	0.08	0.06	0.06	0.05	0.04	0.05
105	0.10	0.10	0.10	0.12	0.10	0.12	0.09	0.12	0.09	0.11	0.09	0.10	0.08	0.07	0.07	0.07	0.08	0.05	0.07
110	0.09	0.13	0.10	0.13	0.10	0.14	0.09	0.14	0.09	0.13	0.10	0.12	0.11	0.08	0.10	0.08	0.09	0.08	0.10
115	0.10	0.15	0.12	0.15	0.13	0.17	0.12	0.16	0.11	0.15	0.11	0.15	0.12	0.08	0.12	0.08	0.11	0.10	0.11
120	0.15	0.18	0.17	0.19	0.17	0.19	0.17	0.19	0.16	0.18	0.15	0.17	0.15	0.09	0.13	0.08	0.13	0.10	0.13
125	0.17	0.20	0.19	0.21	0.19	0.21	0.18	0.22	0.18	0.20	0.17	0.19	0.18	0.12	0.15	0.11	0.15	0.10	0.16
130	0.18	0.22	0.19	0.23	0.20	0.24	0.20	0.24	0.18	0.23	0.19	0.22	0.18	0.17	0.18	0.15	0.18	0.17	0.18
135	0.19	0.24	0.22	0.25	0.23	0.26	0.26	0.25	0.22	0.24	0.20	0.24	0.21	0.19	0.20	0.18	0.20	0.17	0.20
140	0.22	0.26	0.24	0.28	0.27	0.28	0.28	0.28	0.27	0.27	0.27	0.25	0.23	0.19	0.22	0.19	0.22	0.18	0.22
145	0.26	0.28	0.27	0.28	0.28	0.29	0.29	0.29	0.29	0.28	0.29	0.27	0.25	0.21	0.23	0.20	0.23	0.20	0.24
150	0.28	0.30	0.28	0.30	0.29	0.30	0.30	0.30	0.31	0.30	0.29	0.29	0.28	0.27	0.27	0.24	0.26	0.22	0.26
155	0.30	0.30	0.29	0.31	0.30	0.30	0.30	0.31	0.30	0.31	0.31	0.31	0.31	0.28	0.29	0.27	0.28	0.28	0.29
160	0.30	0.32	0.30	0.31	0.30	0.30	0.30	0.31	0.30	0.31	0.31	0.31	0.31	0.31	0.28	0.29	0.29	0.30	0.31
165	0.30	0.32	0.30	0.30	0.30	0.30	0.30	0.31	0.31	0.31	0.31	0.32	0.32	0.29	0.31	0.30	0.32	0.29	0.31
170	0.30	0.32	0.30	0.30	0.30	0.31	0.30	0.31	0.31	0.32	0.31	0.32	0.32	0.30	0.32	0.30	0.32	0.30	0.32
175	0.30	0.31	0.30	0.30	0.30	0.31	0.30	0.31	0.31	0.32	0.31	0.32	0.31	0.31	0.32	0.30	0.32	0.30	0.32
180	0.30	0.31	0.30	0.30	0.30	0.31	0.30	0.31	0.32	0.32	0.31	0.32	0.31	0.31	0.32	0.30	0.32	0.30	0.32

C Range: 0 - 360DEG  
C Interval: 15.0DEG  
Test Speed: HIGH  
Temperature:24.7DEG  
Operators:Lingxin Xie  
Test Date:2022-05-26

γ Range: 0 - 180DEG  
γ Interval: 1.0DEG  
Test System:EVERFINE GO-2000A\_V1 SYSTEM V2.0.291  
Humidity:54.2%  
Test Distance:10.149m [K=1.0000]  
Remarks:

Checker: Jianfei Wu

Assessor: Lijian Jiang

## LUMINOUS DISTRIBUTION INTENSITY DATA

Table--2

UNIT: cd

C (DEG) γ (DEG)	285	300	315	330	345													
0	70.8	70.9	70.8	70.9	70.9													
5	71.2	71.1	70.9	70.8	70.6													
10	70.8	70.6	70.4	70.1	69.7													
15	69.8	69.6	69.2	68.8	68.3													
20	68.2	68.0	67.4	66.9	66.2													
25	66.1	65.7	65.1	64.4	63.5													
30	63.3	62.8	62.1	61.3	60.4													
35	59.8	59.2	58.6	57.7	56.7													
40	55.7	55.2	54.4	53.5	52.4													
45	51.1	50.5	49.7	48.8	47.7													
50	46.0	45.4	44.5	43.7	42.4													
55	40.5	39.9	38.9	38.1	36.8													
60	34.8	34.1	33.0	32.1	30.8													
65	28.5	27.9	26.9	25.9	24.6													
70	21.9	21.3	20.4	19.4	18.2													
75	15.3	14.7	13.9	13.1	11.9													
80	9.33	8.86	8.02	7.35	6.38													
85	4.13	3.80	3.38	3.01	2.48													
90	0.53	0.76	0.83	0.78	0.64													
95	0.04	0.06	0.07	0.08	0.08													
100	0.04	0.06	0.06	0.06	0.06													
105	0.07	0.08	0.07	0.10	0.09													
110	0.08	0.10	0.09	0.10	0.09													
115	0.08	0.12	0.10	0.13	0.09													
120	0.10	0.15	0.10	0.16	0.10													
125	0.11	0.16	0.12	0.17	0.15													
130	0.17	0.19	0.16	0.19	0.18													
135	0.19	0.20	0.17	0.21	0.18													
140	0.19	0.22	0.19	0.23	0.20													
145	0.20	0.24	0.21	0.26	0.23													
150	0.26	0.26	0.26	0.28	0.26													
155	0.28	0.29	0.29	0.28	0.30													
160	0.29	0.29	0.30	0.30	0.30													
165	0.30	0.31	0.30	0.31	0.29													
170	0.30	0.32	0.30	0.31	0.29													
175	0.30	0.32	0.30	0.31	0.29													
180	0.30	0.32	0.30	0.32	0.31													

C Range: 0 - 360DEG  
 C Interval: 15.0DEG  
 Test Speed: HIGH  
 Temperature:24.7DEG  
 Operators:Lingxin Xie  
 Test Date:2022-05-26

γ Range: 0 - 180DEG  
 γ Interval: 1.0DEG  
 Test System:EVERFINE GO-2000A\_V1 SYSTEM V2.0.291  
 Humidity:54.2%  
 Test Distance:10.149m [K=1.0000]  
 Remarks:

Checker: Jianfei Wu

Assessor: Lijian Jiang