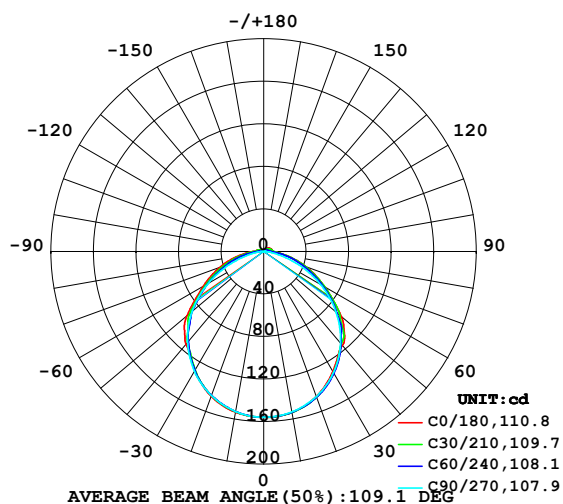


LUMINAIRE PHOTOMETRIC TEST REPORT

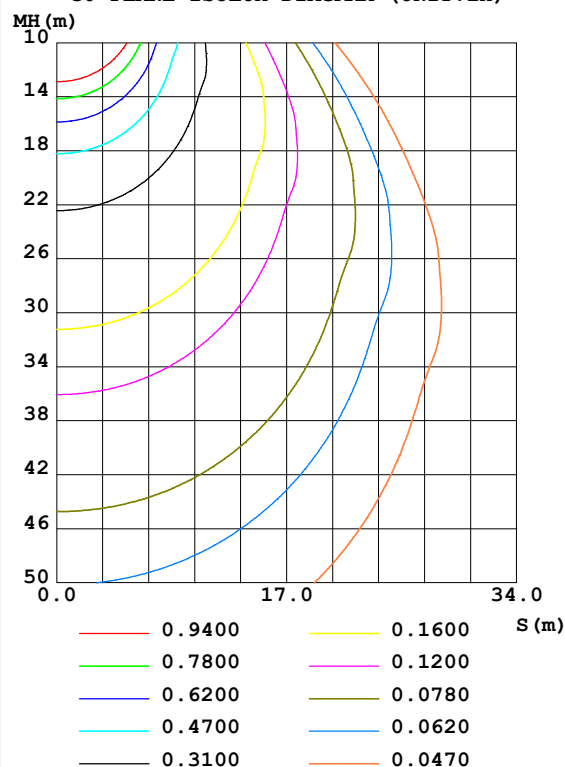
Test:U:12.0V I:0.427A P:5.12W PF:1.000 Freq:0Hz Lamp Flux:453.2x1 lm		
NAME: LED strip	SUR.:1M*0.001M	SERIAL No.:
MFR.: EKLART		

DATA OF LAMP		PHOTOMETRIC DATA Eff: 88.45 lm/W			
MODEL	EKF4148HL9065+	Imax(cd)	156.0	S/MH(C0/180)	1.24
NOMINAL POWER(W)	5	LOR(%)	100.0	S/MH(C90/270)	1.24
RATED VOLTAGE(V)	12	TOTAL FLUX(lm)	453.20	η UP,DN(C0-180)	1.9,48.4
NOMINAL FLUX(lm)	453.2	CIE CLASS	DIRECT	η UP,DN(C180-360)	1.6,48.1
LAMPS INSIDE	1	η up(%)	3.5	CIBSE SHR NOM	1.25
TEST VOLTAGE(V)	12	η down(%)	96.5	CIBSE SHR MAX	1.35

LUMINOUS INTENSITY DISTRIBUTION DIAGRAM



C0 PLANE ISOLUX DIAGRAM (UNIT:lx)



C Range: 0 - 360DEG
 C Interval: 15.0DEG
 Test Speed: MEDIUM
 Temperature:24.7DEG
 Operators:Hu Cong
 Test Date:2022-07-21

γ Range: 0 - 180DEG
 γ Interval: 0.5DEG
 Test System:EVERFINE GO-2000A_V1 SYSTEM V2.0.291
 Humidity:54.2%
 Test Distance:10.149m [K=1.0000]
 Remarks:

Checker: Cong Hu

Assessor: Chunbo Zhou

ZONAL FLUX DIAGRAM

ZONAL FLUX DIAGRAM:

γ	C0	C45	C90	C135	C180	C225	C270	C315	γ	Φ zone	Φ total	%lum, lamp
10	153.6	153.9	153.1	153.0	153.5	152.8	152.9	153.5	0- 10	14.76	14.76	3.26,3.26
20	145.0	146.1	145.1	144.4	144.8	143.9	144.1	145.3	10- 20	42.26	57.02	12.6,12.6
30	130.3	132.4	131.5	129.3	129.6	129.1	130.4	131.3	20- 30	63.75	120.8	26.6,26.6
40	115.4	112.9	112.6	110.4	113.8	110.8	111.4	112.1	30- 40	76.01	196.8	43.4,43.4
50	95.61	90.99	88.88	88.45	94.32	89.22	87.99	91.57	40- 50	79.19	276.0	60.9,60.9
60	66.21	65.20	61.41	61.52	65.73	61.51	60.32	64.35	50- 60	68.62	344.6	76,76
70	42.45	41.19	32.62	38.45	43.98	38.23	31.62	40.30	60- 70	50.45	395.0	87.2,87.2
80	21.47	20.72	9.288	19.19	23.99	19.10	8.817	19.90	70- 80	29.88	424.9	93.8,93.8
90	8.934	8.092	0.5449	7.429	9.474	7.295	0.3205	7.657	80- 90	12.36	437.3	96.5,96.5
100	7.253	6.153	0.0985	5.217	6.466	4.834	0.1017	6.163	90-100	5.758	443.0	97.8,97.8
110	6.835	4.928	0.2025	2.657	4.334	2.389	0.1835	4.749	100-110	4.008	447.0	98.6,98.6
120	5.741	3.562	0.2998	0.9772	2.819	0.7931	0.2846	2.996	110-120	2.636	449.7	99.2,99.2
130	4.513	2.465	0.3986	0.4525	1.139	0.4431	0.3879	1.528	120-130	1.589	451.3	99.6,99.6
140	2.960	1.394	0.4867	0.5215	0.5312	0.4762	0.4786	0.5604	130-140	0.8870	452.2	99.8,99.8
150	1.424	0.7209	0.5721	0.5926	0.5602	0.5451	0.5603	0.5342	140-150	0.4958	452.7	99.9,99.9
160	0.6809	0.6465	0.6204	0.6443	0.6227	0.6093	0.6270	0.6032	150-160	0.2948	453.0	99.9,99.9
170	0.6770	0.6825	0.6614	0.6811	0.6809	0.6529	0.6766	0.6506	160-170	0.1836	453.1	100,100
180	0.6981	0.6852	0.6852	0.6852	0.6981	0.6852	0.6873	0.6830	170-180	0.0648	453.2	100,100
DEG	LUMINOUS INTENSITY:cd									UNIT:lm		

Conical surface Flux(90deg): 236.72 lm

%lum = 52.2%

%lamp = 52.2%

Conical surface Flux(120deg): 344.59 lm

%lum = 76.0%

%lamp = 76.0%

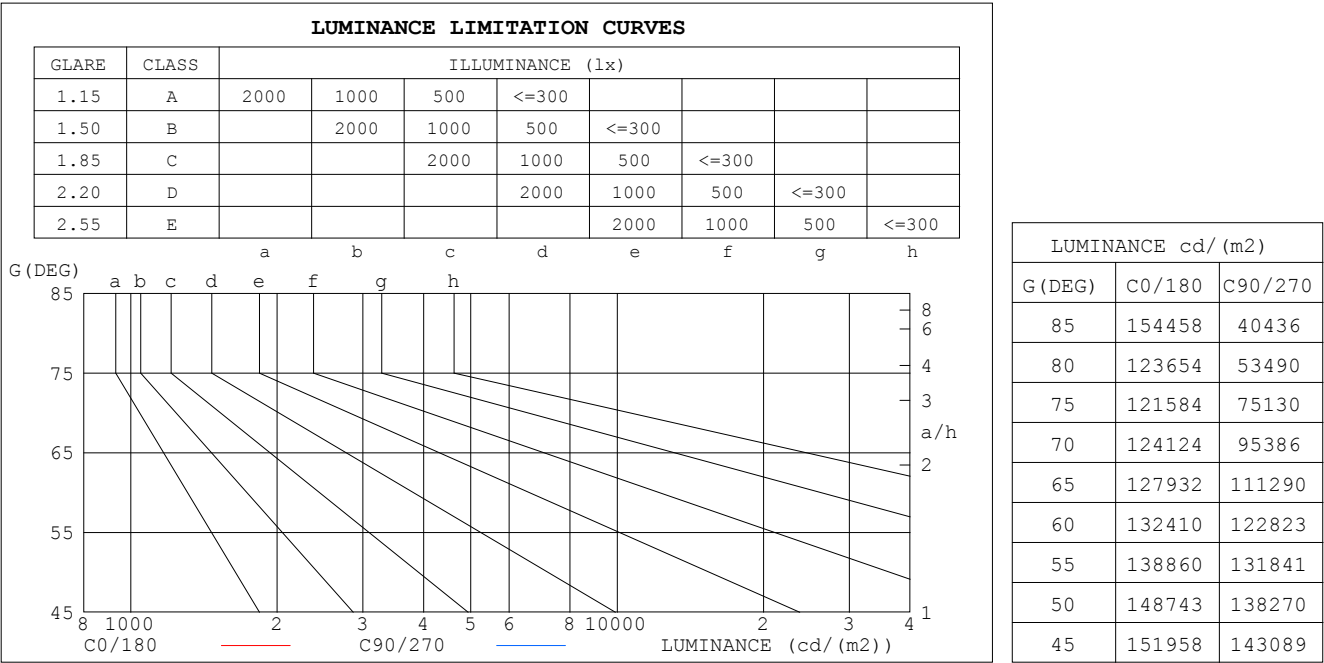
C Range: 0 - 360DEG
 C Interval: 15.0DEG
 Test Speed: MEDIUM
 Temperature:24.7DEG
 Operators:Hu Cong
 Test Date:2022-07-21

γ Range: 0 - 180DEG
 γ Interval: 0.5DEG
 Test System:EVERFINE GO-2000A_V1 SYSTEM V2.0.291
 Humidity:54.2%
 Test Distance:10.149m [K=1.0000]
 Remarks:

Checker: Cong Hu

Assessor: Chunbo Zhou

LUMINANCE LIMITATION CURVES



C Range: 0 - 360DEG
C Interval: 15.0DEG
Test Speed: MEDIUM
Temperature:24.7DEG
Operators:Hu Cong
Test Date:2022-07-21

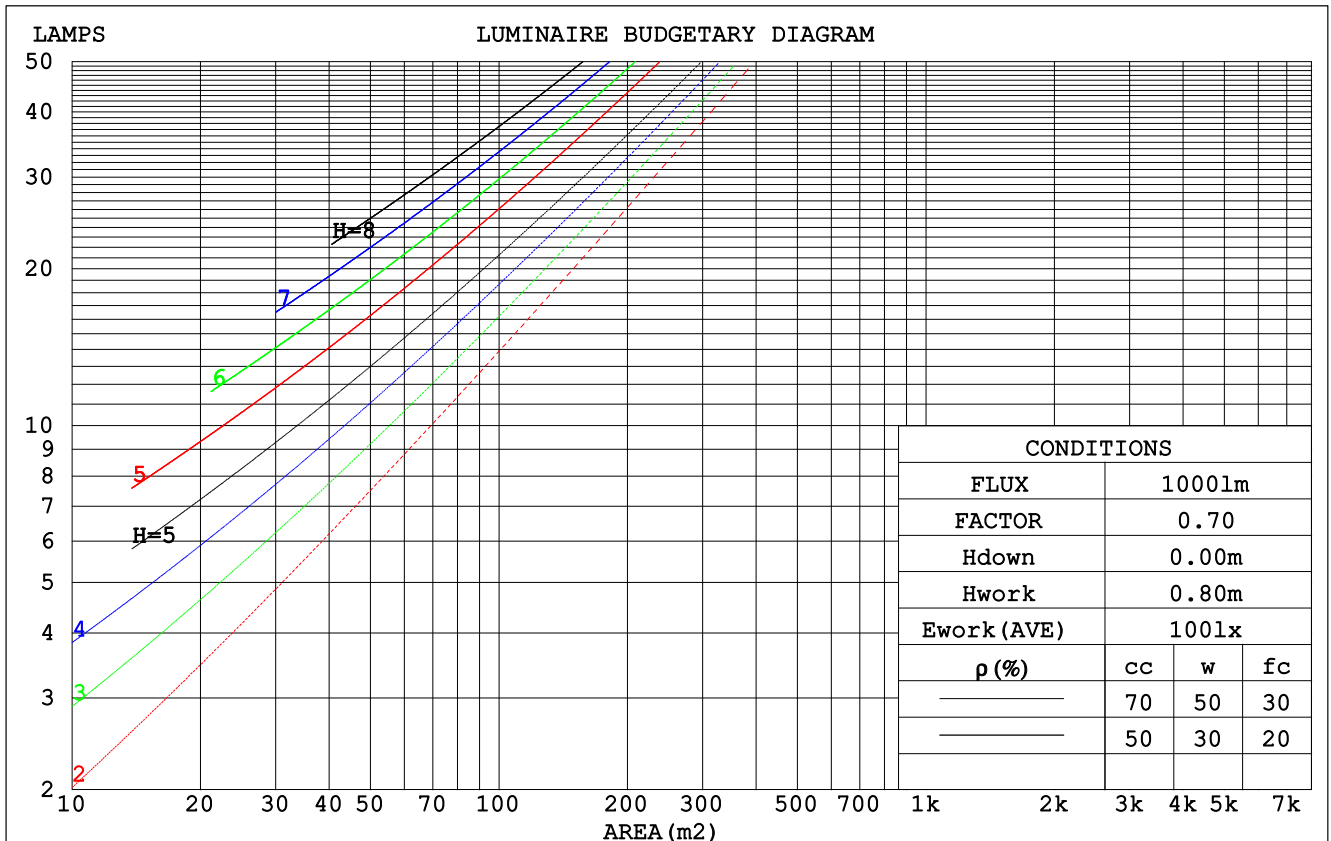
Checker: Cong Hu

γ Range: 0 - 180DEG
γ Interval: 0.5DEG
Test System:EVERFINE GO-2000A_V1 SYSTEM V2.0.291
Humidity:54.2%
Test Distance:10.149m [K=1.0000]
Remarks:

Assessor: Chunbo Zhou

CU AND LUMINAIRE BUDGETARY ESTIMATE DIAGRAM

pcc	80%			70%			50%			30%			10%			0
pw	50%	30%	10%	50%	30%	10%	50%	30%	10%	50%	30%	10%	50%	30%	10%	0
pfc	20%			20%			20%			20%			20%			0
RCR	RCR:Room Cavity Ratio						Coefficients of Utilization(CU)									
0.0	1.18	1.18	1.18	1.15	1.15	1.15	1.09	1.09	1.09	1.04	1.04	1.04	.99	.99	.99	.96
1.0	1.03	.98	.95	1.00	.96	.93	.95	.92	.89	.91	.88	.86	.87	.85	.83	.80
2.0	.90	.83	.77	.87	.81	.76	.83	.78	.73	.79	.75	.71	.76	.72	.69	.67
3.0	.79	.71	.64	.77	.69	.63	.73	.67	.62	.70	.65	.60	.67	.63	.59	.56
4.0	.70	.61	.54	.68	.60	.54	.65	.58	.53	.63	.56	.52	.60	.55	.50	.48
5.0	.62	.53	.47	.61	.53	.46	.59	.51	.46	.56	.50	.45	.54	.48	.44	.42
6.0	.56	.47	.41	.55	.47	.41	.53	.45	.40	.51	.44	.39	.49	.43	.39	.36
7.0	.51	.42	.36	.50	.42	.36	.48	.41	.35	.46	.40	.35	.45	.39	.34	.32
8.0	.46	.38	.32	.46	.38	.32	.44	.37	.32	.42	.36	.31	.41	.35	.31	.29
9.0	.43	.34	.29	.42	.34	.29	.40	.33	.28	.39	.33	.28	.38	.32	.28	.26
10.0	.39	.31	.26	.39	.31	.26	.37	.31	.26	.36	.30	.26	.35	.29	.25	.23



C Range: 0 - 360DEG
 C Interval: 15.0DEG
 Test Speed: MEDIUM
 Temperature: 24.7DEG
 Operators: Hu Cong
 Test Date: 2022-07-21

γ Range: 0 - 180DEG
 γ Interval: 0.5DEG
 Test System: EVERFINE GO-2000A_V1 SYSTEM V2.0.291
 Humidity: 54.2%
 Test Distance: 10.149m [K=1.0000]
 Remarks:

Checker: Cong Hu

Assessor: Chunbo Zhou

WEC AND CCEC

pcc	80%			70%			50%			30%			10%			0
pw	50%	30%	10%	50%	30%	10%	50%	30%	10%	50%	30%	10%	50%	30%	10%	0
pfc	20%			20%			20%			20%			20%			0
RCR	RCR:Room Cavity Ratio						Wall Exitance Coeffcients (WEC)									
0.0																
1.0	.314	.179	.057	.306	.175	.055	.291	.167	.053	.277	.160	.051	.264	.153	.049	
2.0	.291	.160	.049	.284	.157	.048	.271	.151	.047	.258	.145	.045	.247	.140	.044	
3.0	.268	.143	.043	.262	.140	.042	.250	.135	.041	.239	.131	.040	.229	.127	.039	
4.0	.247	.129	.038	.242	.126	.037	.231	.122	.037	.221	.119	.036	.212	.115	.035	
5.0	.228	.116	.034	.223	.115	.033	.214	.111	.033	.205	.108	.032	.196	.105	.032	
6.0	.212	.106	.030	.207	.105	.030	.199	.102	.030	.191	.099	.029	.183	.096	.029	
7.0	.197	.097	.028	.193	.096	.027	.185	.094	.027	.178	.091	.027	.171	.089	.026	
8.0	.184	.090	.025	.180	.089	.025	.173	.087	.025	.167	.085	.024	.161	.082	.024	
9.0	.173	.083	.023	.169	.082	.023	.163	.081	.023	.157	.079	.023	.151	.077	.022	
10.0	.162	.078	.022	.159	.077	.021	.154	.075	.021	.148	.074	.021	.143	.072	.021	

pcc	80%			70%			50%			30%			10%			0
pw	50%	30%	10%	50%	30%	10%	50%	30%	10%	50%	30%	10%	50%	30%	10%	0
pfc	20%			20%			20%			20%			20%			0
RCR	RCR:Room Cavity Ratio						Ceiling Cavity Exitance Coefficients (CCEC)									
0.0	.217	.217	.217	.186	.186	.186	.127	.127	.127	.073	.073	.073	.023	.023	.023	
1.0	.208	.183	.161	.178	.157	.139	.121	.108	.096	.070	.063	.056	.022	.020	.018	
2.0	.199	.159	.125	.171	.137	.108	.117	.095	.075	.067	.055	.044	.022	.018	.014	
3.0	.191	.142	.102	.164	.122	.088	.113	.085	.062	.065	.050	.036	.021	.016	.012	
4.0	.184	.128	.086	.158	.111	.075	.108	.077	.053	.063	.045	.031	.020	.015	.010	
5.0	.176	.118	.075	.151	.102	.065	.104	.071	.046	.060	.042	.027	.019	.014	.009	
6.0	.169	.110	.067	.145	.095	.058	.100	.067	.041	.058	.039	.025	.019	.013	.008	
7.0	.162	.103	.061	.140	.089	.053	.097	.063	.038	.056	.037	.022	.018	.012	.007	
8.0	.156	.097	.057	.134	.084	.049	.093	.059	.035	.054	.035	.021	.017	.011	.007	
9.0	.150	.092	.053	.129	.080	.046	.090	.056	.033	.052	.033	.020	.017	.011	.007	
10.0	.144	.088	.050	.124	.076	.044	.086	.054	.031	.050	.032	.019	.016	.010	.006	

C Range: 0 - 360DEG
 C Interval: 15.0DEG
 Test Speed: MEDIUM
 Temperature:24.7DEG
 Operators:Hu Cong
 Test Date:2022-07-21

Checker: Cong Hu

γ Range: 0 - 180DEG
 γ Interval: 0.5DEG
 Test System:EVERFINE GO-2000A_V1 SYSTEM V2.0.291
 Humidity:54.2%
 Test Distance:10.149m [K=1.0000]
 Remarks:

Assessor: Chunbo Zhou

UGR(Unified Glare Rating) Table

ceiling/cavity	0.7	0.7	0.5	0.5	0.3	0.7	0.7	0.5	0.5	0.3
walls	0.5	0.3	0.5	0.3	0.3	0.5	0.3	0.5	0.3	0.3
working plane	0.2	0.2	0.2	0.2	0.2	0.2	0.2	0.2	0.2	0.2
Room dimensions	Viewed crosswise					Viewed endwise				
x = 2H y = 2H	32.6	34.1	32.9	34.3	34.6	32.3	33.8	32.6	34.0	34.3
3H	34.1	35.5	34.5	35.8	36.1	33.5	34.9	33.9	35.2	35.5
4H	34.8	36.1	35.2	36.4	36.7	33.9	35.2	34.3	35.5	35.8
6H	35.4	36.6	35.7	36.9	37.3	34.1	35.3	34.5	35.6	36.0
8H	35.6	36.8	36.0	37.1	37.5	34.1	35.3	34.5	35.6	36.0
12H	35.8	37.0	36.3	37.3	37.7	34.1	35.3	34.5	35.6	36.0
4H 2H	33.1	34.4	33.5	34.7	35.1	32.9	34.2	33.3	34.5	34.8
3H	34.9	36.0	35.3	36.4	36.7	34.4	35.5	34.8	35.8	36.2
4H	35.7	36.7	36.1	37.1	37.5	34.9	35.9	35.4	36.3	36.7
6H	36.4	37.3	36.9	37.7	38.2	35.3	36.2	35.7	36.6	37.0
8H	36.7	37.6	37.2	38.0	38.5	35.3	36.2	35.8	36.6	37.1
12H	37.1	37.9	37.6	38.3	38.8	35.4	36.2	35.9	36.6	37.1
8H 4H	36.0	36.8	36.4	37.2	37.7	35.3	36.1	35.8	36.6	37.0
6H	36.9	37.6	37.4	38.1	38.6	35.9	36.6	36.3	37.0	37.5
8H	37.3	38.0	37.8	38.4	39.0	36.1	36.7	36.6	37.2	37.7
12H	37.8	38.4	38.3	38.9	39.4	36.2	36.7	36.7	37.2	37.8
12H 4H	36.0	36.7	36.4	37.2	37.7	35.3	36.1	35.8	36.6	37.0
6H	37.0	37.6	37.5	38.1	38.6	36.0	36.6	36.5	37.1	37.6
8H	37.5	38.0	38.0	38.5	39.1	36.3	36.8	36.8	37.3	37.9
Variations with the observer position at spacings:										
S = 1.0H	+ 0.2 / - 0.2					+ 0.2 / - 0.2				
1.5H	+ 0.2 / - 0.3					+ 0.2 / - 0.4				
2.0H	+ 0.2 / - 0.2					+ 0.2 / - 0.3				

CIE Pub.117, 453.2 lm Total Lamp Luminous Flux Correct (8log(F/F0) = -2.7)

C Range: 0 - 360DEG
 C Interval: 15.0DEG
 Test Speed: MEDIUM
 Temperature:24.7DEG
 Operators:Hu Cong
 Test Date:2022-07-21

Checker: Cong Hu

γ Range: 0 - 180DEG
 γ Interval: 0.5DEG
 Test System:EVERFINE GO-2000A_V1 SYSTEM V2.0.291
 Humidity:54.2%
 Test Distance:10.149m [K=1.0000]
 Remarks:

Assessor: Chunbo Zhou

UTILIZATION FACTORS TABLE

REFLECTANCE										
Ceiling	0.8	0.8	0.8	0.7	0.7	0.7	0.5	0.5	0.5	0
Walls	0.7	0.5	0.3	0.7	0.5	0.3	0.7	0.5	0.3	0
Working plane	0.2	0.2	0.2	0.2	0.2	0.2	0.2	0.2	0.2	0
ROOM INDEX	UTILIZATION FACTORS (PERCENT) $k(RI) \times RCR = 5$									
$k = 0.60$	57	45	38	56	45	38	54	44	38	31
0.80	67	55	48	65	54	47	63	53	47	40
1.00	75	64	56	74	63	56	71	64	55	48
1.25	82	71	64	80	70	64	77	69	63	55
1.50	87	77	70	85	76	69	82	74	68	60
2.00	94	85	78	92	84	77	88	81	76	67
2.50	98	90	83	95	88	82	91	85	80	71
3.00	101	94	88	98	92	87	94	89	84	75
4.00	105	99	94	102	97	92	97	93	89	80
5.00	107	102	98	105	100	96	100	96	93	82
ROOM INDEX	UF (total)									Direct
According to DIN EN 13032-2 2004			Suspended					SHRNOM = 1.25		

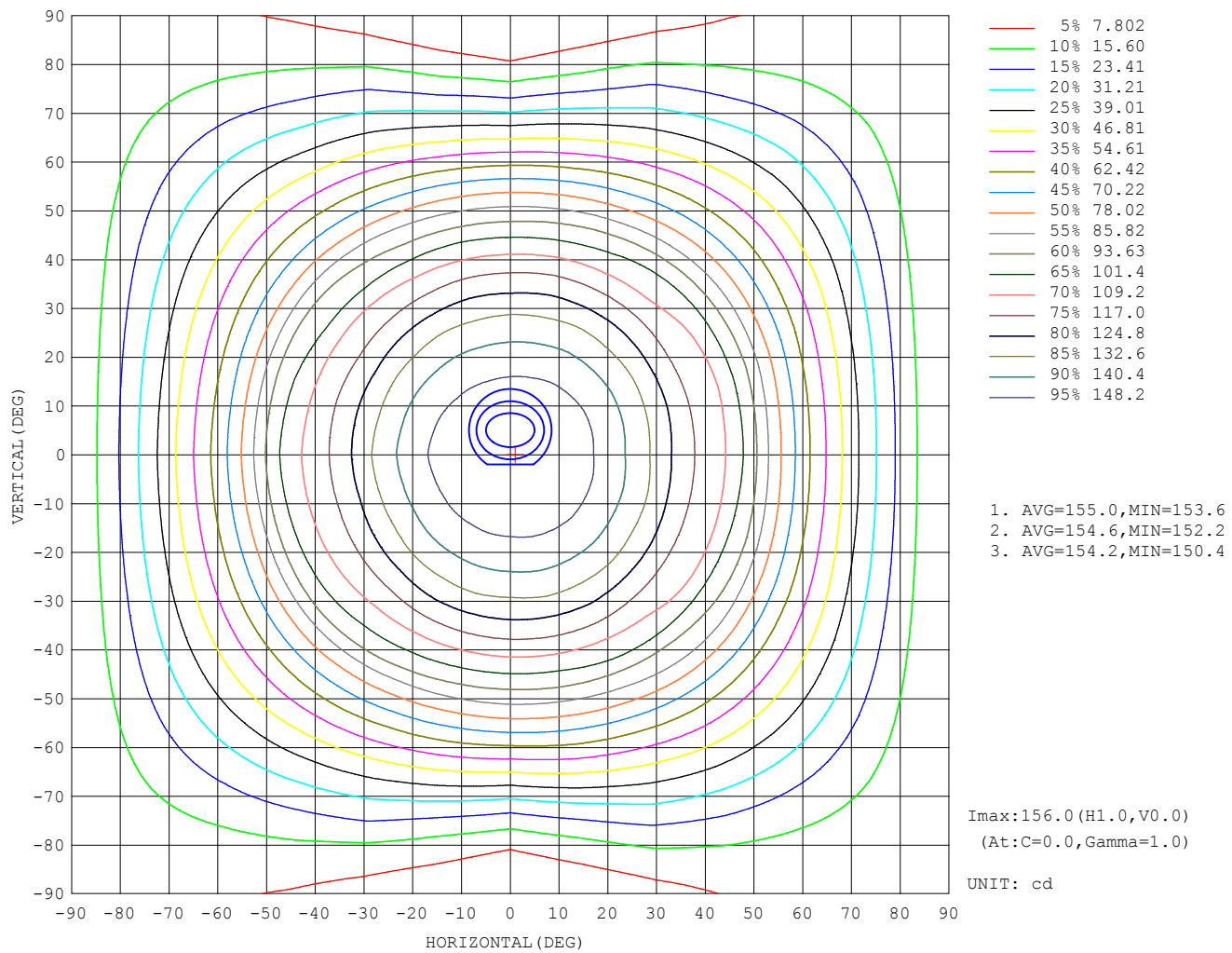
C Range: 0 - 360DEG
 C Interval: 15.0DEG
 Test Speed: MEDIUM
 Temperature: 24.7DEG
 Operators: Hu Cong
 Test Date: 2022-07-21

Checker: Cong Hu

γ Range: 0 - 180DEG
 γ Interval: 0.5DEG
 Test System: EVERFINE GO-2000A_V1 SYSTEM V2.0.291
 Humidity: 54.2%
 Test Distance: 10.149m [K=1.0000]
 Remarks:

Assessor: Chunbo Zhou

ISOCANDELA DIAGRAM



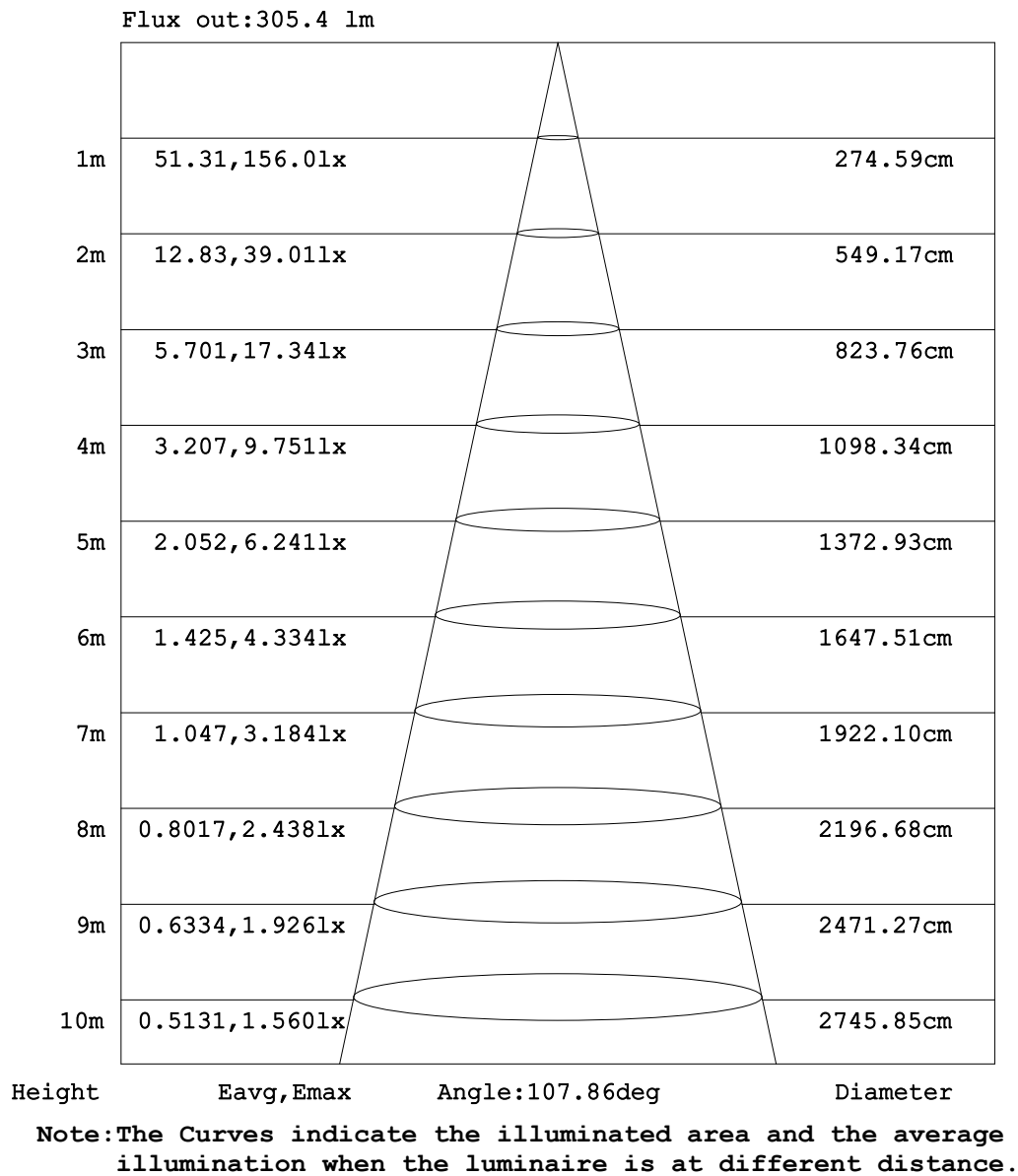
C Range: 0 - 360DEG
C Interval: 15.0DEG
Test Speed: MEDIUM
Temperature:24.7DEG
Operators:Hu Cong
Test Date:2022-07-21

γ Range: 0 - 180DEG
 γ Interval: 0.5DEG
Test System:EVERFINE GO-2000A_V1 SYSTEM V2.0.291
Humidity:54.2%
Test Distance:10.149m [K=1.0000]
Remarks:

Checker: Cong Hu

Assessor: Chunbo Zhou

AAI Figure



C Range: 0 - 360DEG
 C Interval: 15.0DEG
 Test Speed: MEDIUM
 Temperature:24.7DEG
 Operators:Hu Cong
 Test Date:2022-07-21

γ Range: 0 - 180DEG
 γ Interval: 0.5DEG
 Test System:EVERFINE GO-2000A_V1 SYSTEM V2.0.291
 Humidity:54.2%
 Test Distance:10.149m [K=1.0000]
 Remarks:

Checker: Cong Hu

Assessor: Chunbo Zhou

LED Avg.L Report

Test:U:12.0V I:0.427A P:5.12W PF:1.000 Freq:0Hz Lamp Flux:453.2x1 lm		
NAME: LED strip	SUR.:1M*0.001M	SERIAL No.:
MFR.: EKLART		

AvgL	cd/m2
L_0~180 (65) av	128485
L_0~180 (75) av	126094
L_0~180 (85) av	164939
L_90~270 (65) av	109916
L_90~270 (75) av	73751
L_90~270 (85) av	38150
L_45 (65) av	120615
L_45 (75) av	112696
L_45 (85) av	137398

Standard: GB/T 29293-2012

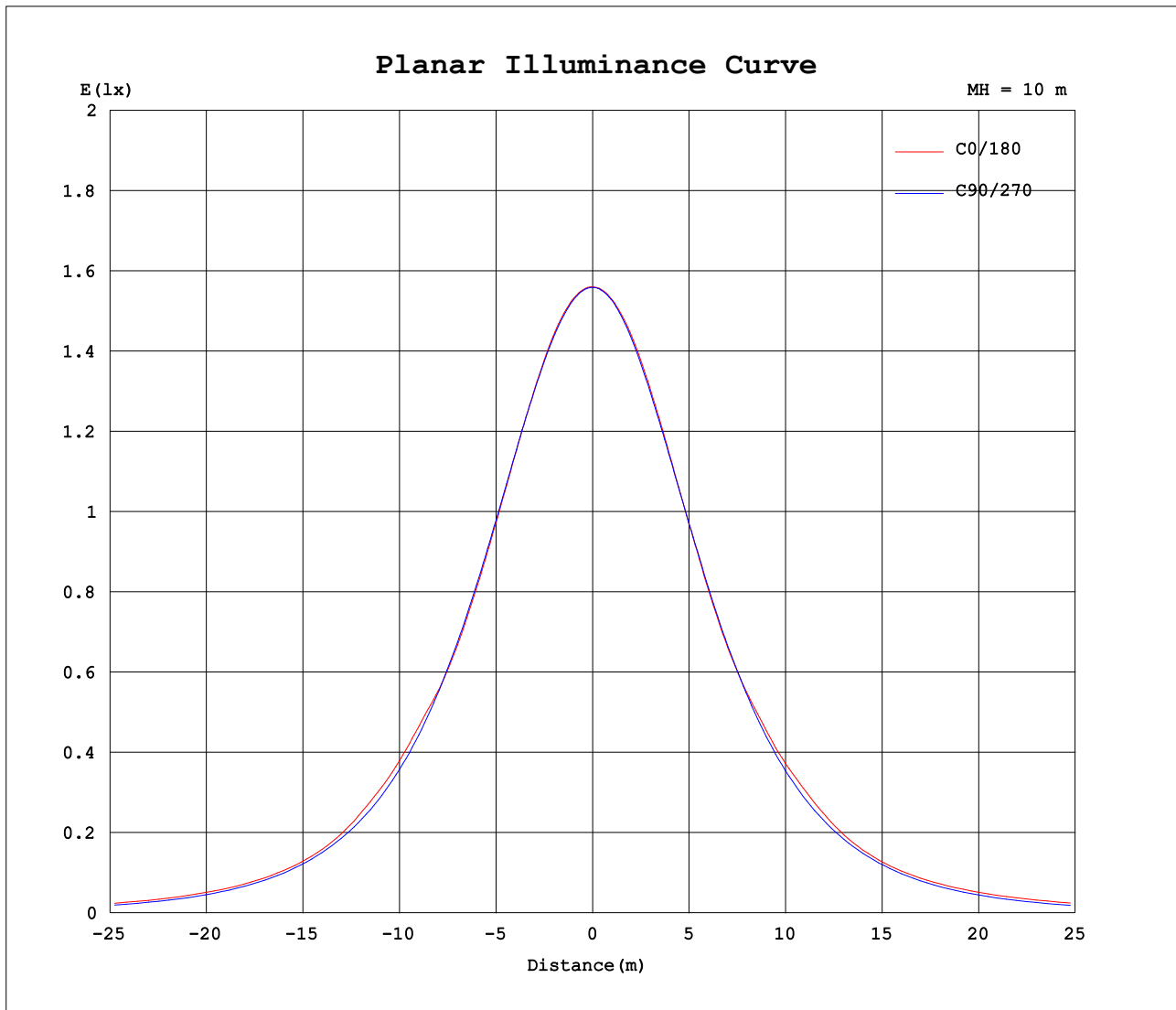
C Range: 0 - 360DEG
 C Interval: 15.0DEG
 Test Speed: MEDIUM
 Temperature:24.7DEG
 Operators:Hu Cong
 Test Date:2022-07-21

Checker: Cong Hu

γ Range: 0 - 180DEG
 γ Interval: 0.5DEG
 Test System:EVERFINE GO-2000A_V1 SYSTEM V2.0.291
 Humidity:54.2%
 Test Distance:10.149m [K=1.0000]
 Remarks:

Assessor: Chunbo Zhou

Planar Illuminance Curve



C Range: 0 - 360DEG
C Interval: 15.0DEG
Test Speed: MEDIUM
Temperature: 24.7DEG
Operators: Hu Cong
Test Date: 2022-07-21

Checker: Cong Hu

γ Range: 0 - 180DEG
 γ Interval: 0.5DEG
Test System: EVERFINE GO-2000A_V1 SYSTEM V2.0.291
Humidity: 54.2%
Test Distance: 10.149m [K=1.0000]
Remarks:

Assessor: Chunbo Zhou

LUMINOUS DISTRIBUTION INTENSITY DATA

Table--1

UNIT: cd

C (DEG) γ (DEG)	0	15	30	45	60	75	90	105	120	135	150	165	180	195	210	225	240	255	270
0	156	156	156	156	156	156	156	156	156	156	156	156	156	156	156	156	156	156	156
5	156	156	156	156	155	155	155	155	155	155	155	155	155	155	155	155	155	155	155
10	154	154	154	154	154	153	153	153	153	153	153	153	154	153	153	153	153	153	153
15	150	151	151	151	150	150	150	150	149	149	149	149	150	150	149	149	149	149	149
20	145	146	146	146	146	146	145	145	145	144	144	144	145	144	144	144	144	144	144
25	138	139	139	140	140	140	139	139	138	138	137	137	138	137	137	137	138	137	138
30	130	131	131	132	132	132	131	131	130	129	129	129	130	129	129	129	129	130	130
35	121	122	122	123	123	123	123	122	121	120	120	120	121	120	119	120	120	121	121
40	115	115	114	113	113	113	113	112	111	110	112	113	114	113	112	111	110	111	111
45	107	107	106	105	104	102	101	100	100	101	103	104	105	104	101	99.2	99.0	100	100
50	95.6	95.5	93.5	91.0	90.0	89.5	88.9	87.9	87.6	88.5	90.2	92.0	94.3	93.1	91.1	89.2	87.7	87.6	88.0
55	79.6	80.1	79.7	78.6	77.1	76.5	75.6	74.6	73.7	74.1	75.0	76.5	78.6	77.4	75.5	74.3	73.7	74.0	74.6
60	66.2	66.4	66.0	65.2	63.8	63.1	61.4	61.3	61.0	61.5	62.4	64.0	65.7	64.3	63.0	61.5	60.8	60.2	60.3
65	54.1	54.4	53.7	53.0	51.3	49.6	47.0	48.1	48.8	49.5	51.0	52.8	54.5	53.1	51.4	49.4	48.4	46.7	45.9
70	42.5	42.8	42.0	41.2	39.4	36.4	32.6	35.3	37.4	38.5	40.2	42.2	44.0	42.5	40.7	38.2	37.1	33.7	31.6
75	31.5	31.8	31.1	30.5	29.3	24.1	19.4	23.2	27.4	28.4	30.0	32.1	33.8	32.4	30.5	28.2	26.8	21.7	18.7
80	21.5	21.7	21.1	20.7	19.0	13.8	9.29	13.2	17.4	19.2	20.6	22.5	24.0	22.8	21.1	19.1	17.2	12.1	8.82
85	13.5	13.7	13.2	12.6	10.8	6.90	3.52	6.82	9.70	11.6	12.9	14.2	15.3	14.5	13.3	11.7	9.56	5.97	3.13
90	8.93	9.16	8.84	8.09	6.26	3.26	0.54	3.34	5.82	7.43	8.37	9.07	9.47	9.14	8.50	7.29	5.56	2.74	0.32
95	7.45	7.50	7.28	6.55	4.97	2.26	0.08	1.89	4.72	6.32	6.98	7.07	7.01	6.99	6.77	5.91	4.21	1.31	0.07
100	7.25	7.21	6.96	6.15	4.42	1.55	0.10	0.74	3.13	5.22	6.38	6.60	6.47	6.45	6.12	4.83	2.72	0.46	0.10
105	7.10	7.01	6.66	5.68	3.69	1.12	0.14	0.19	1.94	3.62	4.81	5.55	5.57	5.40	4.62	3.27	1.70	0.17	0.14
110	6.84	6.69	6.19	4.93	2.96	0.77	0.20	0.22	1.03	2.66	3.55	4.21	4.33	4.07	3.38	2.39	0.88	0.20	0.18
115	6.40	6.18	5.36	4.12	2.40	0.51	0.25	0.27	0.34	1.81	2.86	3.41	3.47	3.27	2.71	1.59	0.32	0.22	0.23
120	5.74	5.50	4.69	3.56	1.92	0.40	0.30	0.32	0.34	0.98	2.05	2.71	2.82	2.55	1.92	0.79	0.33	0.28	0.28
125	5.11	4.88	4.15	3.03	1.49	0.40	0.35	0.37	0.37	0.44	1.22	1.93	2.02	1.76	1.10	0.44	0.36	0.33	0.34
130	4.51	4.30	3.58	2.47	1.14	0.43	0.40	0.42	0.41	0.45	0.53	0.98	1.14	0.83	0.53	0.44	0.40	0.37	0.39
135	3.80	3.60	2.91	1.87	0.87	0.47	0.44	0.47	0.46	0.48	0.52	0.56	0.53	0.54	0.50	0.45	0.45	0.42	0.44
140	2.96	2.79	2.17	1.39	0.66	0.51	0.49	0.51	0.50	0.52	0.52	0.56	0.53	0.53	0.51	0.48	0.49	0.47	0.48
145	2.09	1.96	1.57	0.98	0.58	0.55	0.53	0.55	0.54	0.56	0.54	0.56	0.53	0.53	0.53	0.51	0.53	0.50	0.52
150	1.42	1.35	1.06	0.72	0.59	0.58	0.57	0.59	0.58	0.59	0.58	0.59	0.56	0.54	0.56	0.55	0.57	0.54	0.56
155	0.94	0.88	0.76	0.63	0.61	0.61	0.60	0.61	0.61	0.62	0.61	0.62	0.59	0.58	0.59	0.58	0.60	0.58	0.59
160	0.68	0.66	0.66	0.65	0.62	0.64	0.62	0.64	0.62	0.64	0.62	0.64	0.62	0.61	0.63	0.61	0.63	0.61	0.63
165	0.68	0.68	0.66	0.67	0.64	0.66	0.64	0.66	0.65	0.66	0.64	0.66	0.65	0.63	0.65	0.64	0.66	0.64	0.65
170	0.68	0.69	0.67	0.68	0.66	0.68	0.66	0.68	0.66	0.68	0.66	0.68	0.68	0.65	0.68	0.65	0.68	0.66	0.68
175	0.69	0.70	0.68	0.68	0.68	0.69	0.68	0.69	0.67	0.68	0.68	0.68	0.70	0.68	0.69	0.68	0.69	0.68	0.69
180	0.70	0.70	0.69	0.69	0.69	0.69	0.69	0.69	0.68	0.69	0.68	0.69	0.70	0.69	0.69	0.69	0.69	0.68	0.69

C Range: 0 - 360DEG
C Interval: 15.0DEG
Test Speed: MEDIUM
Temperature:24.7DEG
Operators:Hu Cong
Test Date:2022-07-21

γ Range: 0 - 180DEG
γ Interval: 0.5DEG
Test System:EVERFINE GO-2000A_V1 SYSTEM V2.0.291
Humidity:54.2%
Test Distance:10.149m [K=1.0000]
Remarks:

Checker: Cong Hu

Assessor: Chunbo Zhou

LUMINOUS DISTRIBUTION INTENSITY DATA

Table--2

UNIT: cd

C (DEG) γ (DEG)	285	300	315	330	345													
0	156	156	156	156	156													
5	155	155	155	156	156													
10	153	153	154	154	154													
15	149	150	150	150	150													
20	144	145	145	146	145													
25	138	139	139	139	139													
30	131	131	131	131	131													
35	122	122	122	122	122													
40	112	112	112	113	115													
45	101	102	104	106	108													
50	88.9	89.9	91.6	93.7	95.8													
55	75.1	75.9	77.5	79.0	80.4													
60	61.3	62.9	64.3	65.9	66.8													
65	48.0	50.3	52.0	53.8	54.7													
70	35.0	38.4	40.3	42.3	43.1													
75	23.2	28.4	29.6	31.4	32.1													
80	13.2	18.8	19.9	21.3	22.0													
85	6.57	10.2	12.0	13.1	13.8													
90	3.17	5.98	7.66	8.62	9.14													
95	2.40	5.07	6.55	7.27	7.50													
100	1.54	3.66	6.16	6.94	7.20													
105	1.20	3.59	4.54	5.47	6.06													
110	0.84	2.91	4.75	5.67	5.92													
115	0.53	2.13	3.91	5.23	5.79													
120	0.39	1.47	3.00	4.55	5.32													
125	0.35	0.94	2.24	3.79	4.78													
130	0.36	0.55	1.53	2.92	4.24													
135	0.41	0.46	0.92	2.05	3.54													
140	0.46	0.47	0.56	1.23	2.65													
145	0.50	0.51	0.51	0.66	1.66													
150	0.54	0.56	0.53	0.56	0.93													
155	0.58	0.59	0.58	0.58	0.59													
160	0.60	0.62	0.60	0.61	0.60													
165	0.64	0.65	0.62	0.64	0.62													
170	0.66	0.68	0.65	0.67	0.65													
175	0.68	0.68	0.68	0.68	0.68													
180	0.68	0.68	0.68	0.69	0.68													

C Range: 0 - 360DEG
C Interval: 15.0DEG
Test Speed: MEDIUM
Temperature:24.7DEG
Operators:Hu Cong
Test Date:2022-07-21

Checker: Cong Hu

γ Range: 0 - 180DEG
γ Interval: 0.5DEG
Test System:EVERFINE GO-2000A_V1 SYSTEM V2.0.291
Humidity:54.2%
Test Distance:10.149m [K=1.0000]
Remarks:

Assessor: Chunbo Zhou