

Spectrum Test Report

Sample :
Specification : EKF54484MM
Sample No. : 5
Manufacturer :

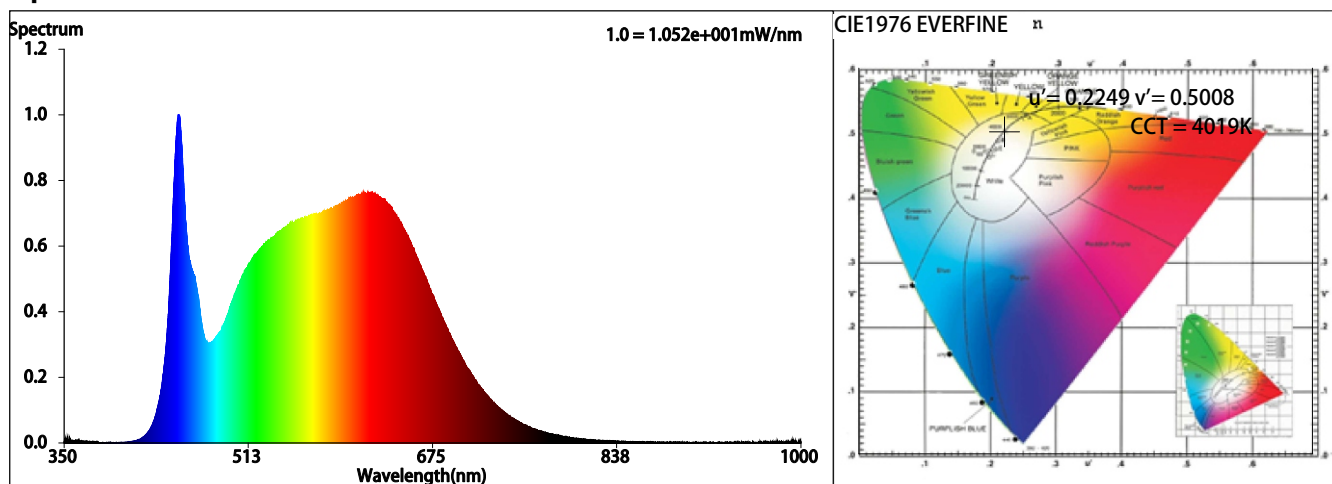
Date : 2022-04-15 20:16:30
Sam. Status :
Instrument : HAAS-2000(EVERFINE)
Test by : QC
Assessor : damin

Test Condition

Temperature : 25.3Deg
WL Range : 350nm-1000nm
Test Mode : Accuracy Test

RH : 55.0%
IP : 49694 (76%)
T : 591 ms
Sensitivity : High

Spectrum



Colorimetric Parameters

Chromaticity Coordinate: $x = 0.3793$ $y = 0.3753$ / $u' = 0.2249$ $v' = 0.5008$ ($duv = -3.44e-04$)

CCT= 4019K Prcp WL: $L_d = 579.2\text{nm}$ Purity=26.5%

Peak WL: $L_p = 451\text{nm}$ FWHM: $\approx 22.2\text{nm}$ Ratio: R=19.8% G=76.1% B=4.2%

Render Index: $R_a = 93.7$ TM30: $R_f = 92$ $R_g = 100$

R1=94 R2=96 R3=95 R4=94 R5=93 R6=92 R7=96

R8=89 R9=73 R10=89 R11=93 R12=70 R13=95 R14=97 R15=93

LEVEL:OUT WHITE:ANSI_4000K

Photometric & Radiometric Parameters

Flux = 499.33 lm Eff. : 99.56 lm/W $\Phi_e = 1.7447\text{ W}$

Electrical parameters

V = 24.00 V I = 0.2090 A P = 5.016 W PF = 1.000

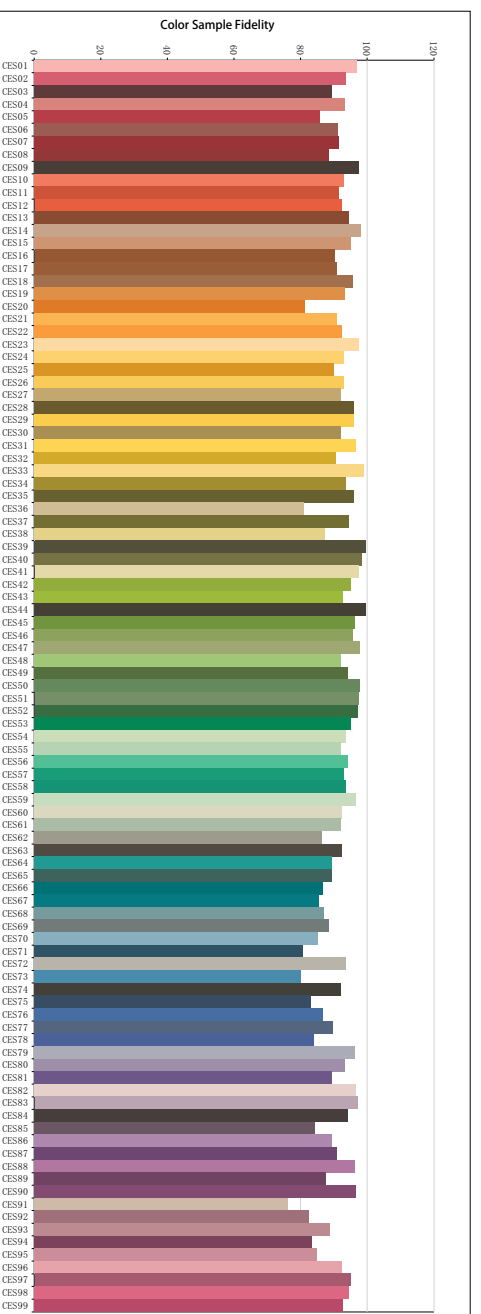
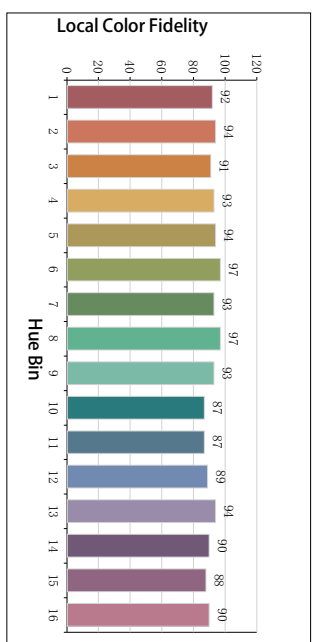
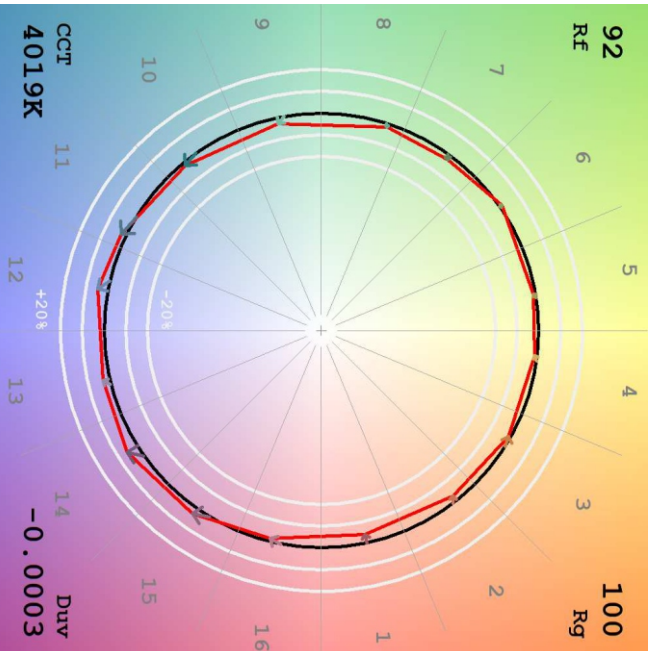
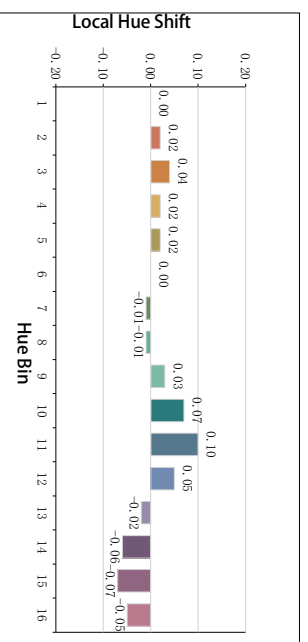
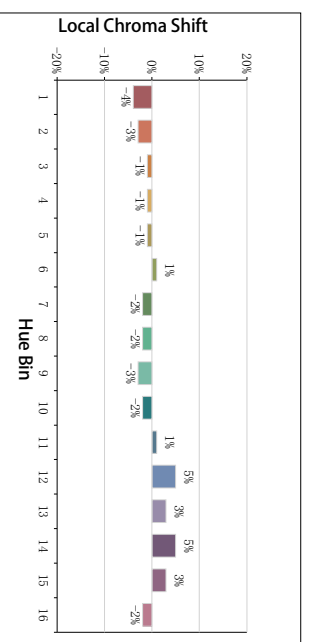
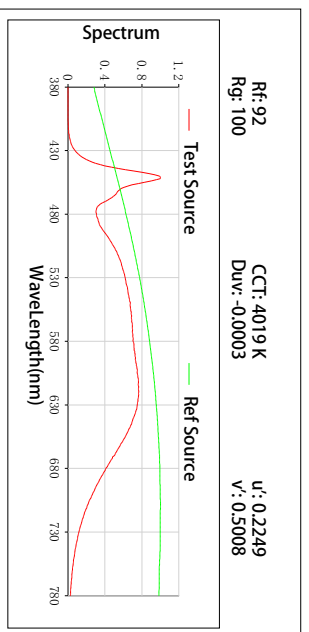
Freq=0.00 Hz

GBT5702

$R_a = 93$

$G_a = 0.98$

TM30



All Rf:

Rf1 = 96.8	Rf2 = 93.7	Rf3 = 89.3	Rf4 = 93.4
Rf5 = 85.9	Rf6 = 91.4	Rf7 = 91.4	Rf8 = 88.4
Rf9 = 97.6	Rf10 = 93.0	Rf11 = 91.7	Rf12 = 92.3
Rf13 = 94.6	Rf14 = 98.1	Rf15 = 95.2	Rf16 = 90.2
Rf17 = 90.9	Rf18 = 95.8	Rf19 = 93.3	Rf20 = 81.4
Rf21 = 91.1	Rf22 = 92.5	Rf23 = 97.5	Rf24 = 93.0
Rf25 = 90.1	Rf26 = 93.1	Rf27 = 92.0	Rf28 = 96.1
Rf29 = 96.1	Rf30 = 92.1	Rf31 = 96.5	Rf32 = 90.8
Rf33 = 99.1	Rf34 = 93.5	Rf35 = 95.9	Rf36 = 81.2
Rf37 = 94.6	Rf38 = 87.3	Rf39 = 99.5	Rf40 = 98.4
Rf41 = 97.4	Rf42 = 95.0	Rf43 = 92.9	Rf44 = 99.6
Rf45 = 96.3	Rf46 = 95.9	Rf47 = 97.8	Rf48 = 92.0
Rf49 = 94.3	Rf50 = 97.8	Rf51 = 97.4	Rf52 = 97.1
Rf53 = 95.2	Rf54 = 93.7	Rf55 = 92.1	Rf56 = 94.2
Rf57 = 93.2	Rf58 = 93.6	Rf59 = 96.7	Rf60 = 92.4
Rf61 = 92.1	Rf62 = 86.3	Rf63 = 92.4	Rf64 = 89.5
Rf65 = 89.3	Rf66 = 86.6	Rf67 = 85.5	Rf68 = 87.1
Rf69 = 88.5	Rf70 = 85.3	Rf71 = 80.7	Rf72 = 93.6
Rf73 = 80.2	Rf74 = 92.1	Rf75 = 83.1	Rf76 = 86.6
Rf77 = 89.7	Rf78 = 84.0	Rf79 = 96.3	Rf80 = 93.3
Rf81 = 89.3	Rf82 = 96.7	Rf83 = 97.1	Rf84 = 94.1
Rf85 = 84.2	Rf86 = 89.5	Rf87 = 90.9	Rf88 = 96.4
Rf89 = 87.6	Rf90 = 96.6	Rf91 = 76.2	Rf92 = 82.4
Rf93 = 88.8	Rf94 = 83.6	Rf95 = 84.9	Rf96 = 92.4
Rf97 = 95.0	Rf98 = 94.5	Rf99 = 92.8	