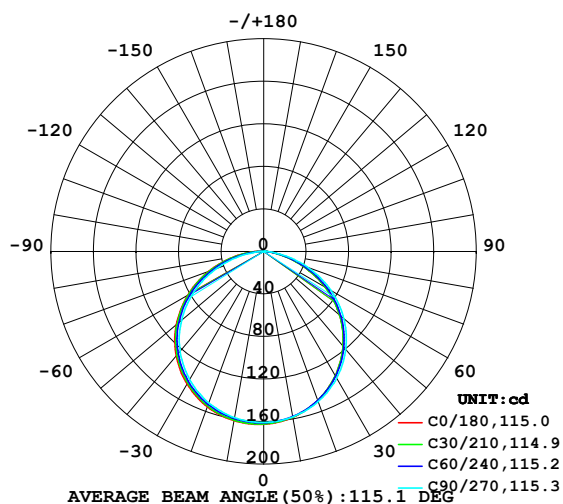


LUMINAIRE PHOTOMETRIC TEST REPORT

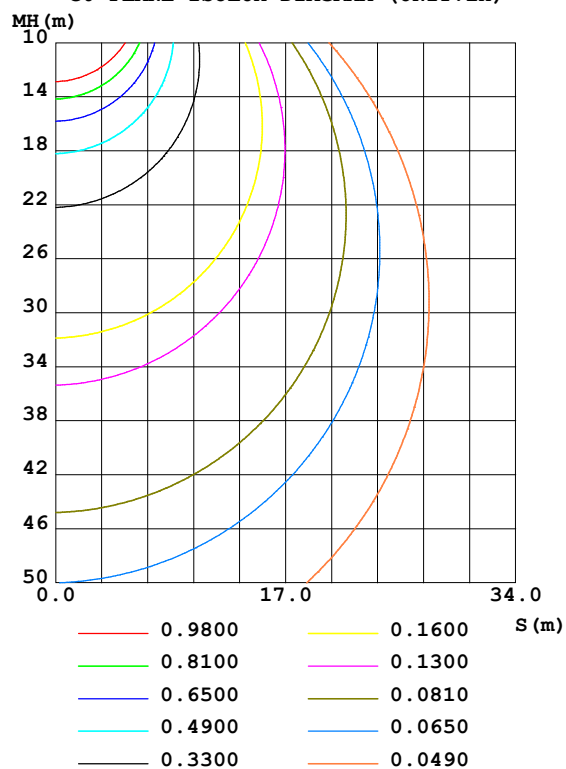
Test:U:24.0V I:0.216A P:5.18W PF:1.000 Freq:0Hz Lamp Flux:479.333x1 lm		
NAME: LED Soft light bar	SUR.:1.0m*0.0046m	SERIAL No.:
MFR.: EKLART		

DATA OF LAMP		PHOTOMETRIC DATA Eff: 92.46 lm/W			
MODEL	EKF51484MM	Imax(cd)	162.8	S/MH(C0/180)	1.32
NOMINAL POWER(W)	5	LOR(%)	100.0	S/MH(C90/270)	1.29
RATED VOLTAGE(V)	24	TOTAL FLUX(lm)	479.33	η UP,DN(C0-180)	0.3,48.9
NOMINAL FLUX(lm)	479.333	CIE CLASS	DIRECT	η UP,DN(C180-360)	0.3,50.4
LAMPS INSIDE	1	η up(%)	0.6	CIBSE SHR NOM	1.25
TEST VOLTAGE(V)	24	η down(%)	99.4	CIBSE SHR MAX	1.35

LUMINOUS INTENSITY DISTRIBUTION DIAGRAM



C0 PLANE ISOLUX DIAGRAM (UNIT:lx)



C Range: 0 - 360DEG
C Interval: 15.0DEG
Test Speed: HIGH
Temperature:24.7DEG
Operators:Lingxin Xie
Test Date:2022-07-20

γ Range: 0 - 180DEG
 γ Interval: 1.0DEG
Test System:EVERFINE GO-2000A_V1 SYSTEM V2.0.291
Humidity:54.2%
Test Distance:10.149m [K=1.0000]
Remarks:

Checker: Jianfei Wu

Assessor: Lijian Jiang

ZONAL FLUX DIAGRAM

ZONAL FLUX DIAGRAM:

γ	C0	C45	C90	C135	C180	C225	C270	C315	γ	Φ zone	Φ total	%lum, lamp
10	158.4	158.0	157.9	160.2	161.5	161.0	158.6	158.3	0- 10	15.31	15.31	3.19,3.19
20	149.1	148.8	150.1	153.6	155.3	154.7	151.5	149.6	10- 20	44.01	59.32	12.4,12.4
30	134.9	135.0	137.5	142.0	144.1	143.2	139.3	136.2	20- 30	67.18	126.5	26.4,26.4
40	116.2	116.6	120.2	125.6	128.0	126.8	122.3	118.2	30- 40	81.80	208.3	43.5,43.5
50	93.19	93.66	98.48	104.6	107.4	106.0	100.7	95.76	40- 50	85.79	294.1	61.4,61.4
60	66.63	67.47	72.99	79.78	82.55	81.25	75.55	69.69	50- 60	78.19	372.3	77.7,77.7
70	37.85	38.88	44.40	52.12	55.23	53.17	47.33	40.80	60- 70	59.84	432.1	90.1,90.1
80	12.98	12.83	16.38	24.12	27.46	24.70	18.80	14.26	70- 80	33.93	466.0	97.2,97.2
90	1.692	1.059	0.1448	4.427	7.095	4.702	0.9749	1.365	80- 90	10.18	476.2	99.4,99.4
100	0.2280	0.1832	0.1595	0.1575	0.4122	0.1177	0.1230	0.1560	90-100	0.9845	477.2	99.6,99.6
110	0.2714	0.2771	0.2541	0.2368	0.1843	0.1839	0.2211	0.2364	100-110	0.2026	477.4	99.6,99.6
120	0.3783	0.3857	0.3713	0.3474	0.2858	0.2855	0.3316	0.3364	110-120	0.2831	477.7	99.7,99.7
130	0.4731	0.4839	0.4698	0.4541	0.3877	0.3909	0.4366	0.4381	120-130	0.3501	478.0	99.7,99.7
140	0.5539	0.5698	0.5522	0.5435	0.4841	0.4890	0.5242	0.5240	130-140	0.3762	478.4	99.8,99.8
150	0.6223	0.6382	0.6223	0.6172	0.5698	0.5697	0.6013	0.5960	140-150	0.3566	478.8	99.9,99.9
160	0.6837	0.6855	0.6714	0.6733	0.6451	0.6345	0.6593	0.6609	150-160	0.2933	479.1	99.9,99.9
170	0.7222	0.7240	0.7187	0.7170	0.7118	0.6942	0.7135	0.7030	160-170	0.1947	479.3	100,100
180	0.7503	0.7363	0.7346	0.7381	0.7486	0.7275	0.7381	0.7416	170-180	0.0690	479.3	100,100
DEG	LUMINOUS INTENSITY:cd									UNIT:lm		

Conical surface Flux(90deg): 251.42 lm

%lum = 52.5%

%lamp = 52.5%

Conical surface Flux(120deg): 372.28 lm

%lum = 77.7%

%lamp = 77.7%

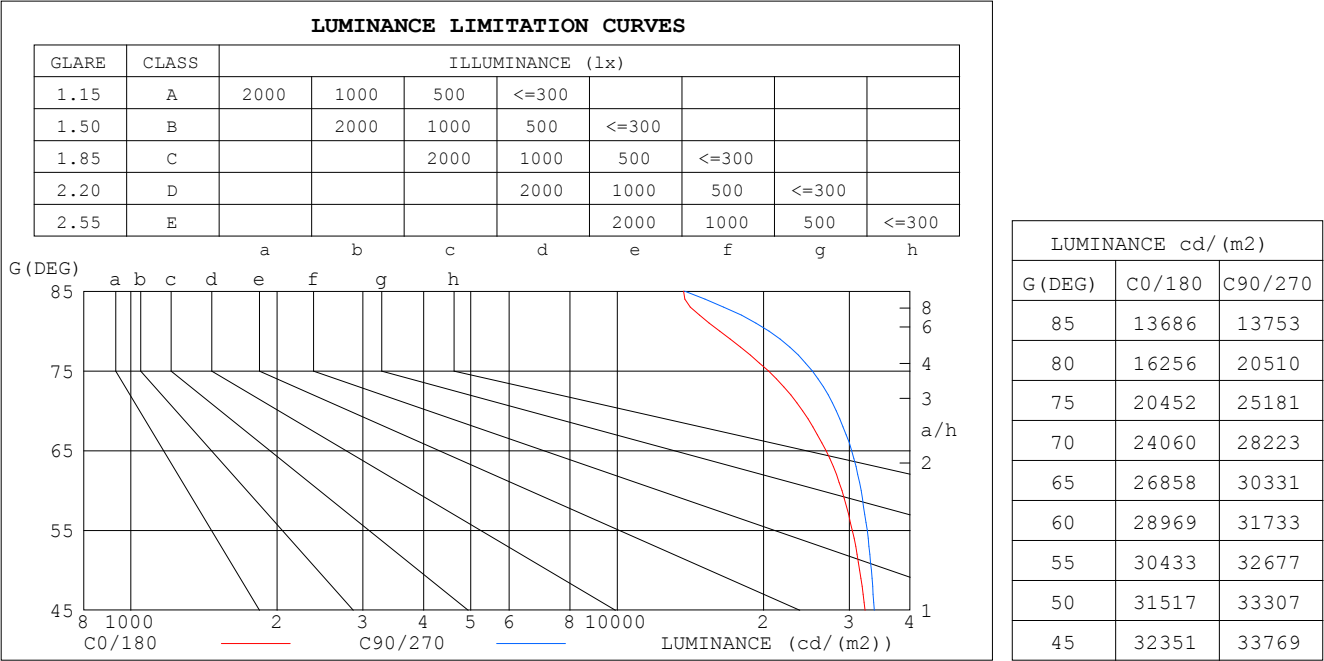
C Range: 0 - 360DEG
 C Interval: 15.0DEG
 Test Speed: HIGH
 Temperature:24.7DEG
 Operators:Lingxin Xie
 Test Date:2022-07-20

Checker: Jianfei Wu

γ Range: 0 - 180DEG
 γ Interval: 1.0DEG
 Test System:EVERFINE GO-2000A_V1 SYSTEM V2.0.291
 Humidity:54.2%
 Test Distance:10.149m [K=1.0000]
 Remarks:

Assessor: Lijian Jiang

LUMINANCE LIMITATION CURVES



C Range: 0 - 360DEG
C Interval: 15.0DEG
Test Speed: HIGH
Temperature:24.7DEG
Operators:Lingxin Xie
Test Date:2022-07-20

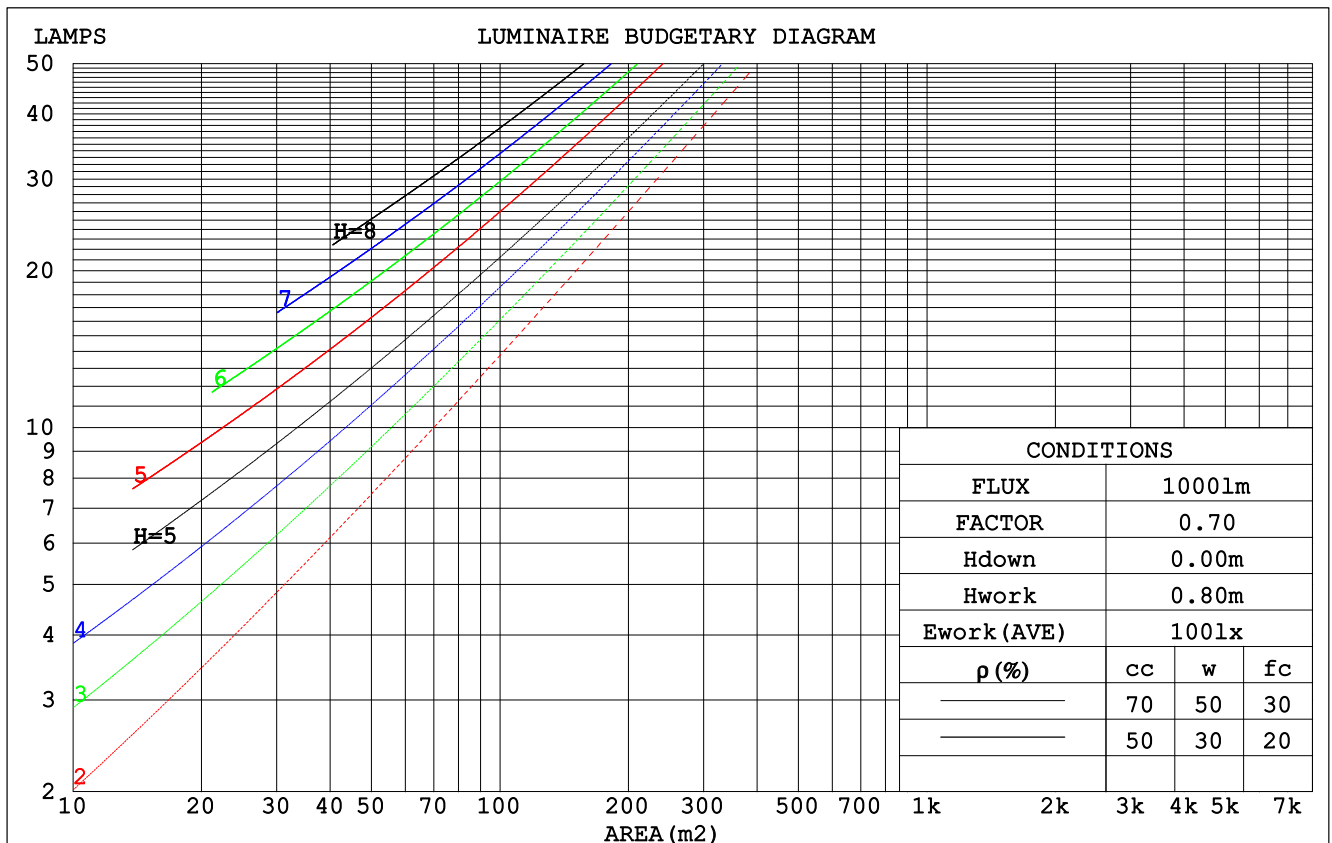
γ Range: 0 - 180DEG
γ Interval: 1.0DEG
Test System:EVERFINE GO-2000A_V1 SYSTEM V2.0.291
Humidity:54.2%
Test Distance:10.149m [K=1.0000]
Remarks:

Checker: Jianfei Wu

Assessor: Lijian Jiang

CU AND LUMINAIRE BUDGETARY ESTIMATE DIAGRAM

pcc	80%			70%			50%			30%			10%			0
pw	50%	30%	10%	50%	30%	10%	50%	30%	10%	50%	30%	10%	50%	30%	10%	0
pfc	20%			20%			20%			20%			20%			0
RCR	RCR:Room Cavity Ratio						Coefficients of Utilization(CU)									
0.0	1.19	1.19	1.19	1.16	1.16	1.16	1.11	1.11	1.11	1.06	1.06	1.06	1.01	1.01	1.01	.99
1.0	1.04	.99	.95	1.01	.97	.94	.97	.94	.91	.93	.90	.88	.89	.87	.85	.83
2.0	.90	.83	.77	.88	.82	.76	.84	.79	.74	.81	.76	.73	.78	.74	.71	.69
3.0	.79	.71	.64	.77	.70	.63	.74	.68	.62	.71	.66	.61	.69	.64	.60	.58
4.0	.70	.61	.54	.68	.60	.54	.66	.59	.53	.63	.57	.52	.61	.56	.51	.49
5.0	.62	.53	.46	.61	.52	.46	.59	.51	.46	.57	.50	.45	.55	.49	.44	.42
6.0	.56	.47	.40	.55	.46	.40	.53	.45	.40	.51	.45	.39	.50	.44	.39	.37
7.0	.51	.42	.36	.50	.41	.35	.48	.41	.35	.47	.40	.35	.45	.39	.35	.32
8.0	.46	.38	.32	.45	.37	.32	.44	.37	.31	.43	.36	.31	.42	.35	.31	.29
9.0	.42	.34	.28	.42	.34	.28	.41	.33	.28	.39	.33	.28	.38	.32	.28	.26
10.0	.39	.31	.26	.38	.31	.26	.37	.30	.26	.36	.30	.25	.36	.30	.25	.23



C Range: 0 - 360DEG
 C Interval: 15.0DEG
 Test Speed: HIGH
 Temperature: 24.7DEG
 Operators: Lingxin Xie
 Test Date: 2022-07-20

γ Range: 0 - 180DEG
 γ Interval: 1.0DEG
 Test System: EVERFINE GO-2000A_V1 SYSTEM V2.0.291
 Humidity: 54.2%
 Test Distance: 10.149m [K=1.0000]
 Remarks:

Checker: Jianfei Wu

Assessor: Lijian Jiang

WEC AND CCEC

pcc	80%			70%			50%			30%			10%			0
pw	50%	30%	10%	50%	30%	10%	50%	30%	10%	50%	30%	10%	50%	30%	10%	0
pfc	20%			20%			20%			20%			20%			0
RCR	RCR:Room Cavity Ratio						Wall Exitance Coefficients (WEC)									
0.0																
1.0	.314	.179	.057	.307	.175	.056	.293	.168	.054	.280	.162	.052	.269	.156	.050	
2.0	.295	.161	.050	.288	.159	.049	.276	.153	.048	.265	.149	.047	.255	.144	.045	
3.0	.272	.145	.043	.266	.143	.043	.256	.139	.042	.246	.135	.041	.237	.131	.041	
4.0	.251	.130	.038	.246	.129	.038	.236	.125	.037	.228	.122	.037	.219	.119	.036	
5.0	.232	.118	.034	.227	.117	.034	.219	.114	.034	.211	.111	.033	.204	.109	.033	
6.0	.215	.108	.031	.211	.107	.031	.203	.104	.030	.196	.102	.030	.190	.100	.030	
7.0	.200	.099	.028	.196	.098	.028	.190	.096	.028	.183	.094	.027	.177	.092	.027	
8.0	.187	.091	.026	.183	.090	.026	.177	.089	.025	.172	.087	.025	.166	.085	.025	
9.0	.175	.085	.024	.172	.084	.024	.166	.082	.023	.161	.081	.023	.157	.079	.023	
10.0	.164	.079	.022	.162	.078	.022	.157	.077	.022	.152	.076	.021	.148	.074	.021	

pcc	80%			70%			50%			30%			10%			0
pw	50%	30%	10%	50%	30%	10%	50%	30%	10%	50%	30%	10%	50%	30%	10%	0
pfc	20%			20%			20%			20%			20%			0
RCR	RCR:Room Cavity Ratio						Ceiling Cavity Exitance Coefficients (CCEC)									
0.0	.195	.195	.195	.167	.167	.167	.114	.114	.114	.065	.065	.065	.021	.021	.021	
1.0	.186	.161	.139	.159	.138	.120	.109	.095	.083	.063	.055	.048	.020	.018	.016	
2.0	.178	.137	.103	.152	.118	.089	.104	.082	.062	.060	.047	.036	.019	.015	.012	
3.0	.170	.119	.079	.146	.103	.069	.100	.072	.048	.058	.042	.028	.019	.014	.009	
4.0	.162	.106	.063	.139	.092	.055	.096	.064	.039	.055	.037	.023	.018	.012	.008	
5.0	.155	.096	.052	.133	.083	.045	.092	.058	.032	.053	.034	.019	.017	.011	.006	
6.0	.148	.087	.044	.127	.076	.038	.088	.053	.027	.051	.031	.016	.016	.010	.005	
7.0	.141	.081	.038	.121	.070	.033	.084	.049	.024	.049	.029	.014	.016	.009	.005	
8.0	.134	.075	.034	.116	.065	.029	.080	.046	.021	.047	.027	.012	.015	.009	.004	
9.0	.128	.070	.030	.111	.061	.026	.077	.043	.019	.045	.025	.011	.014	.008	.004	
10.0	.123	.065	.027	.106	.057	.024	.073	.040	.017	.043	.024	.010	.014	.008	.003	

C Range: 0 - 360DEG
 C Interval: 15.0DEG
 Test Speed: HIGH
 Temperature:24.7DEG
 Operators:Lingxin Xie
 Test Date:2022-07-20

γ Range: 0 - 180DEG
 γ Interval: 1.0DEG
 Test System:EVERFINE GO-2000A_V1 SYSTEM V2.0.291
 Humidity:54.2%
 Test Distance:10.149m [K=1.0000]
 Remarks:

Checker: Jianfei Wu

Assessor: Lijian Jiang

UGR(Unified Glare Rating) Table

ceiling/cavity	0.7	0.7	0.5	0.5	0.3	0.7	0.7	0.5	0.5	0.3
walls	0.5	0.3	0.5	0.3	0.3	0.5	0.3	0.5	0.3	0.3
working plane	0.2	0.2	0.2	0.2	0.2	0.2	0.2	0.2	0.2	0.2
Room dimensions	Viewed crosswise					Viewed endwise				
x = 2H y = 2H	26.9	28.5	27.2	28.7	28.9	27.3	28.8	27.6	29.0	29.2
3H	28.2	29.6	28.5	29.9	30.1	28.7	30.2	29.1	30.4	30.7
4H	28.7	30.0	29.0	30.3	30.6	29.3	30.6	29.6	30.9	31.2
6H	28.9	30.2	29.3	30.5	30.8	29.6	30.9	30.0	31.2	31.5
8H	29.0	30.2	29.3	30.5	30.8	29.7	30.9	30.0	31.2	31.5
12H	29.0	30.2	29.4	30.5	30.8	29.7	30.9	30.1	31.2	31.5
4H 2H	27.5	28.9	27.8	29.1	29.4	27.8	29.1	28.1	29.4	29.7
3H	29.0	30.1	29.3	30.4	30.8	29.4	30.6	29.8	30.9	31.2
4H	29.5	30.6	29.9	30.9	31.3	30.0	31.1	30.4	31.4	31.8
6H	29.8	30.8	30.2	31.2	31.5	30.5	31.4	30.9	31.8	32.2
8H	29.9	30.8	30.4	31.2	31.6	30.6	31.5	31.0	31.9	32.3
12H	30.0	30.8	30.4	31.2	31.6	30.6	31.5	31.1	31.8	32.3
8H 4H	29.7	30.6	30.1	31.0	31.4	30.2	31.1	30.6	31.5	31.9
6H	30.1	30.9	30.6	31.3	31.7	30.7	31.5	31.2	31.9	32.3
8H	30.3	30.9	30.7	31.4	31.8	30.9	31.5	31.3	32.0	32.4
12H	30.4	31.0	30.9	31.4	31.9	31.0	31.5	31.5	32.0	32.5
12H 4H	29.7	30.5	30.1	30.9	31.3	30.2	31.0	30.6	31.4	31.8
6H	30.2	30.8	30.6	31.2	31.7	30.7	31.4	31.2	31.8	32.3
8H	30.3	30.9	30.8	31.3	31.8	30.9	31.5	31.4	31.9	32.4
Variations with the observer position at spacings:										
S = 1.0H	+ 0.2 / - 0.2					+ 0.2 / - 0.2				
1.5H	+ 0.2 / - 0.4					+ 0.2 / - 0.3				
2.0H	+ 0.3 / - 0.3					+ 0.3 / - 0.3				

CIE Pub.117, 479.3 lm Total Lamp Luminous Flux Correct (8log(F/F0) = -2.6)

C Range: 0 - 360DEG
 C Interval: 15.0DEG
 Test Speed: HIGH
 Temperature: 24.7DEG
 Operators: Lingxin Xie
 Test Date: 2022-07-20

γ Range: 0 - 180DEG
 γ Interval: 1.0DEG
 Test System: EVERFINE GO-2000A_V1 SYSTEM V2.0.291
 Humidity: 54.2%
 Test Distance: 10.149m [K=1.0000]
 Remarks:

Checker: Jianfei Wu

Assessor: Lijian Jiang

UTILIZATION FACTORS TABLE

REFLECTANCE										
Ceiling	0.8	0.8	0.8	0.7	0.7	0.7	0.5	0.5	0.5	0
Walls	0.7	0.5	0.3	0.7	0.5	0.3	0.7	0.5	0.3	0
Working plane	0.2	0.2	0.2	0.2	0.2	0.2	0.2	0.2	0.2	0
ROOM INDEX	UTILIZATION FACTORS (PERCENT) $k(RI) \times RCR = 5$									
$k = 0.60$	57	45	38	56	45	38	55	44	38	31
0.80	67	55	48	66	55	47	64	54	47	40
1.00	75	64	57	74	63	56	72	65	56	49
1.25	82	72	65	81	71	64	78	70	63	56
1.50	87	77	70	86	77	70	83	75	69	61
2.00	94	86	79	93	84	78	89	82	77	69
2.50	98	90	84	96	89	83	92	86	81	73
3.00	102	95	89	100	93	88	95	90	86	77
4.00	106	100	95	103	98	94	99	95	91	82
5.00	108	103	99	106	101	98	101	98	94	85
ROOM INDEX	UF (total)									Direct
According to DIN EN 13032-2 2004			Suspended					SHRNOM = 1.25		

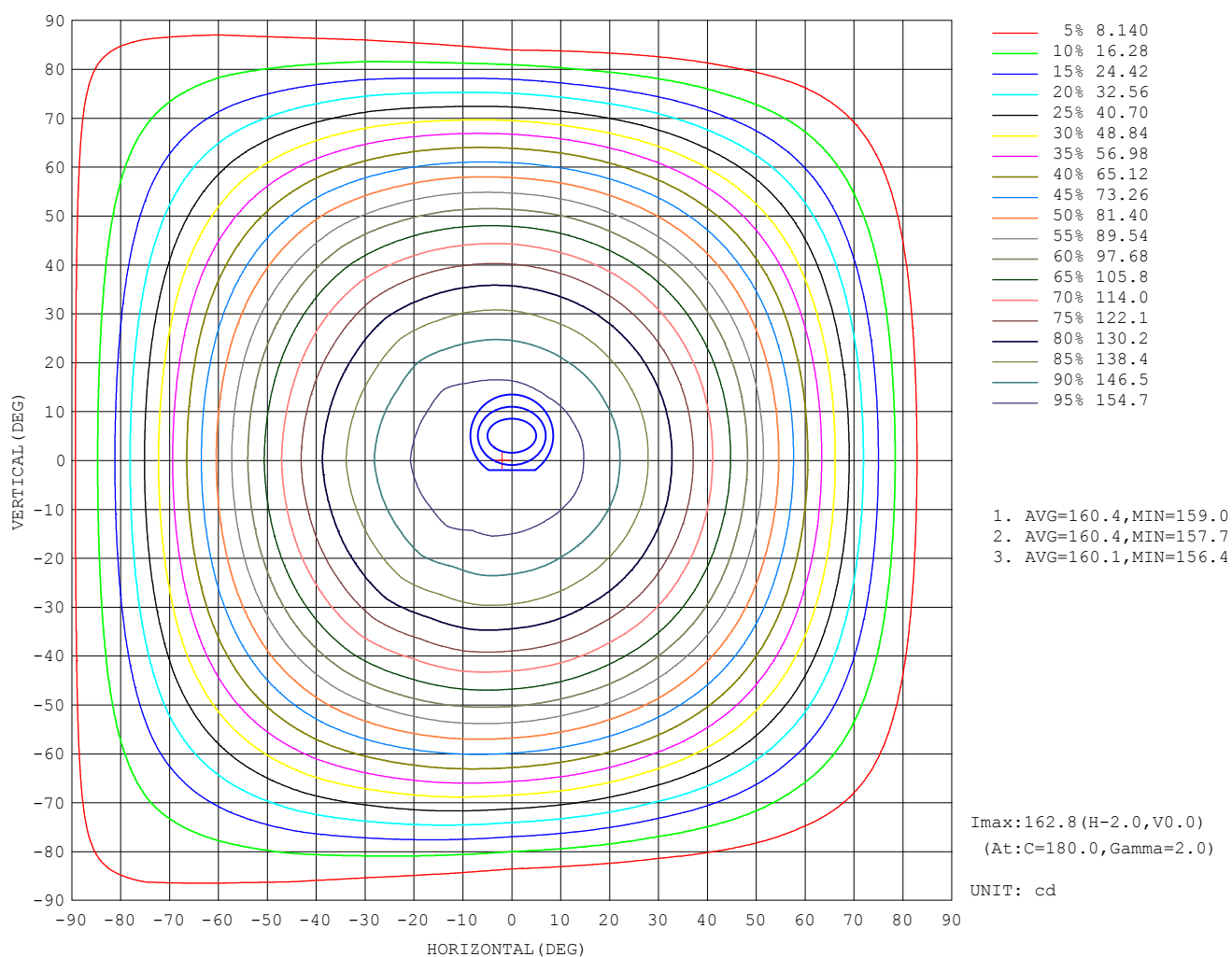
C Range: 0 - 360DEG
 C Interval: 15.0DEG
 Test Speed: HIGH
 Temperature: 24.7DEG
 Operators: Lingxin Xie
 Test Date: 2022-07-20

Checker: Jianfei Wu

γ Range: 0 - 180DEG
 γ Interval: 1.0DEG
 Test System: EVERFINE GO-2000A_V1 SYSTEM V2.0.291
 Humidity: 54.2%
 Test Distance: 10.149m [K=1.0000]
 Remarks:

Assessor: Lijian Jiang

ISOCANDELA DIAGRAM



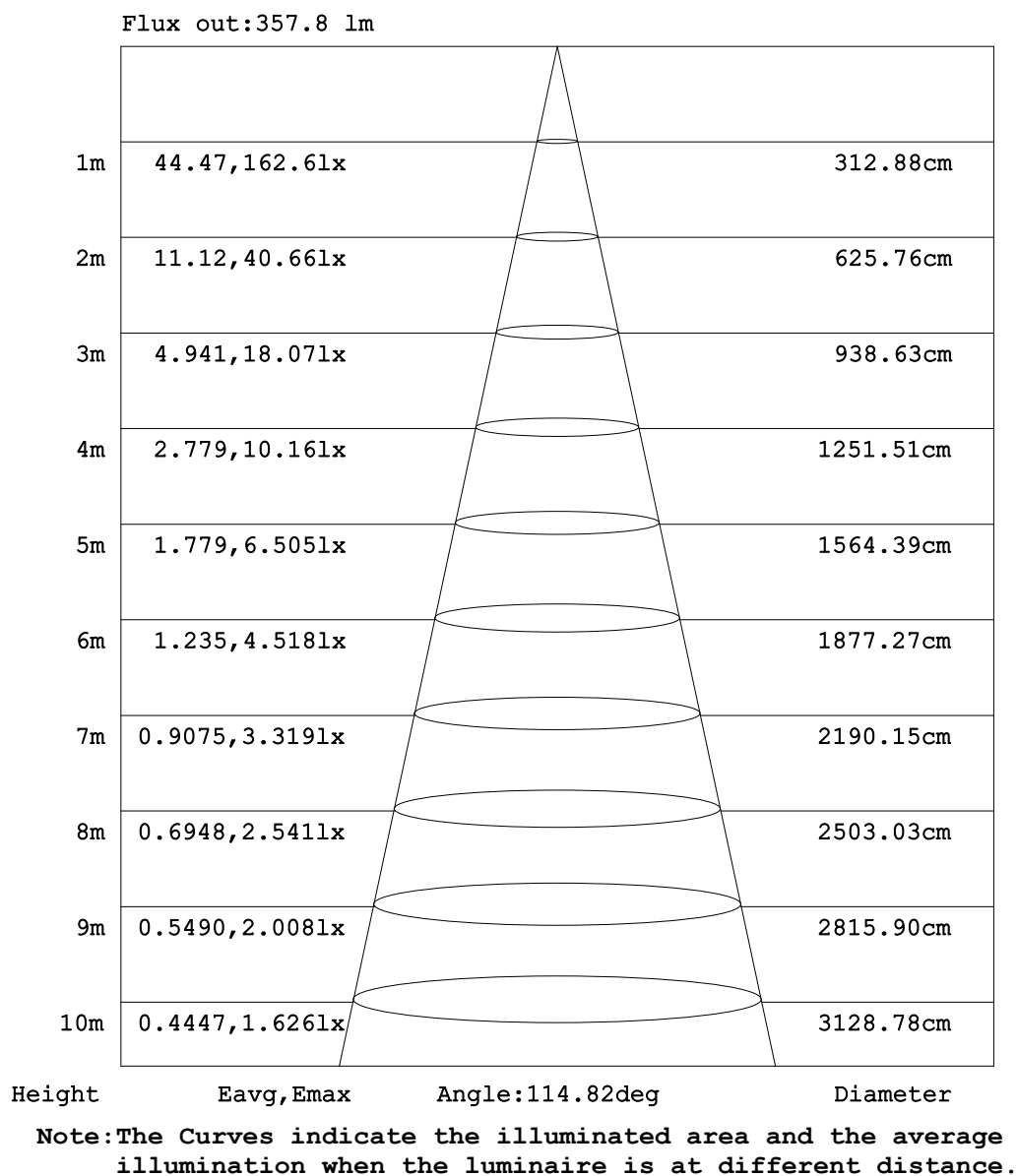
C Range: 0 - 360DEG
C Interval: 15.0DEG
Test Speed: HIGH
Temperature:24.7DEG
Operators:Lingxin Xie
Test Date:2022-07-20

γ Range: 0 - 180DEG
 γ Interval: 1.0DEG
Test System:EVERFINE GO-2000A_V1 SYSTEM V2.0.291
Humidity:54.2%
Test Distance:10.149m [K=1.0000]
Remarks:

Checker: Jianfei Wu

Assessor: Lijian Jiang

AAI Figure



C Range: 0 - 360DEG
 C Interval: 15.0DEG
 Test Speed: HIGH
 Temperature: 24.7DEG
 Operators: Lingxin Xie
 Test Date: 2022-07-20

γ Range: 0 - 180DEG
 γ Interval: 1.0DEG
 Test System: EVERFINE GO-2000A_V1 SYSTEM V2.0.291
 Humidity: 54.2%
 Test Distance: 10.149m [K=1.0000]
 Remarks:

Checker: Jianfei Wu

Assessor: Lijian Jiang

LED Avg.L Report

Test:U:24.0V I:0.216A P:5.18W PF:1.000 Freq:0Hz Lamp Flux:479.333x1 lm		
NAME: LED Soft light bar	SUR.:1.0m*0.0046m	SERIAL No.:
MFR.: EKLART		

AvgL	cd/m2
L_0~180 (65) av	31220
L_0~180 (75) av	27477
L_0~180 (85) av	26370
L_90~270 (65) av	31045
L_90~270 (75) av	26330
L_90~270 (85) av	14049
L_45 (65) av	31202
L_45 (75) av	26910
L_45 (85) av	21957

Standard: GB/T 29293-2012

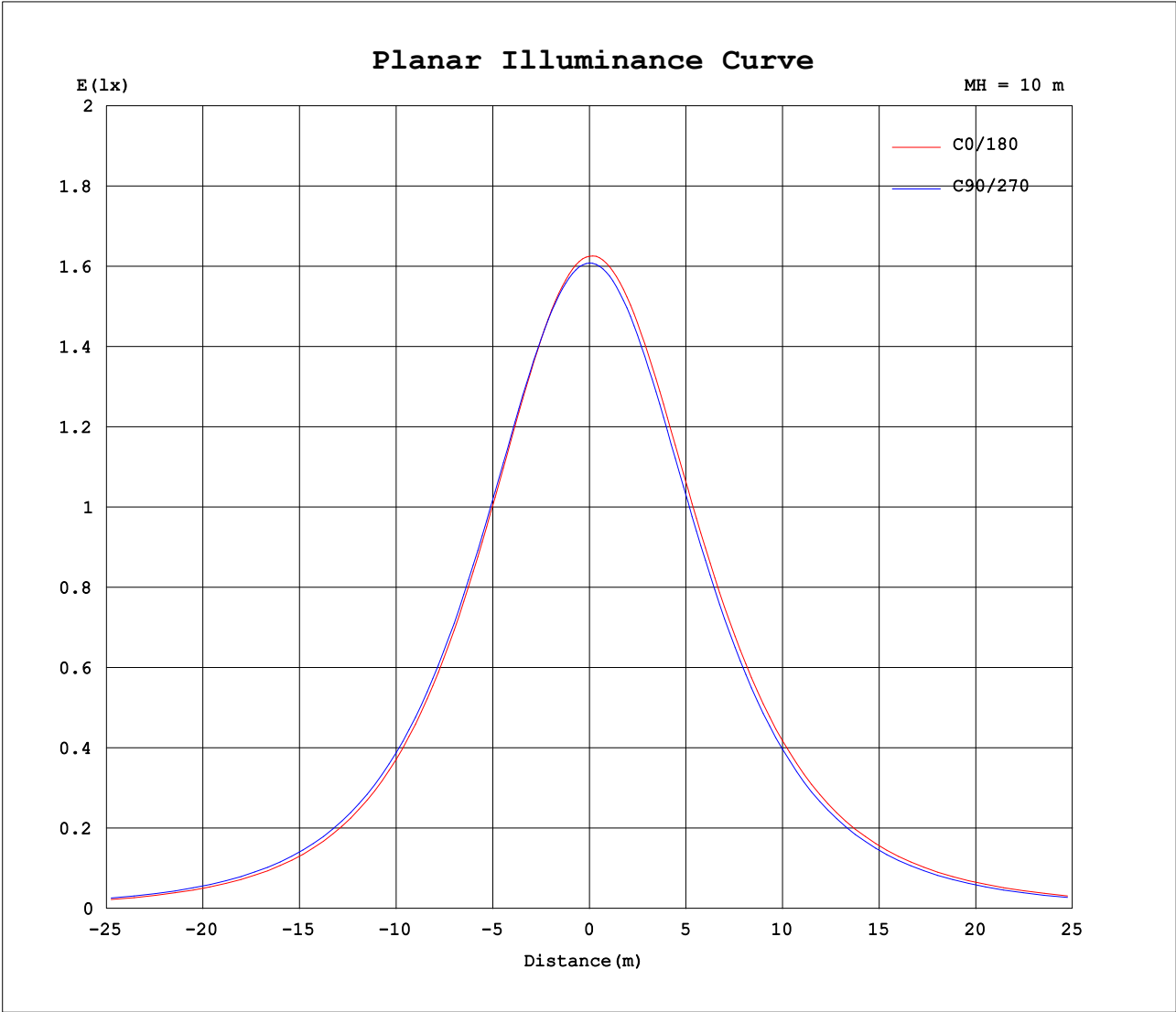
C Range: 0 - 360DEG
 C Interval: 15.0DEG
 Test Speed: HIGH
 Temperature:24.7DEG
 Operators:Lingxin Xie
 Test Date:2022-07-20

Checker: Jianfei Wu

γ Range: 0 - 180DEG
 γ Interval: 1.0DEG
 Test System:EVERFINE GO-2000A_V1 SYSTEM V2.0.291
 Humidity:54.2%
 Test Distance:10.149m [K=1.0000]
 Remarks:

Assessor: Lijian Jiang

Planar Illuminance Curve



C Range: 0 - 360DEG
C Interval: 15.0DEG
Test Speed: HIGH
Temperature:24.7DEG
Operators:Lingxin Xie
Test Date:2022-07-20

γ Range: 0 - 180DEG
 γ Interval: 1.0DEG
Test System:EVERFINE GO-2000A_V1 SYSTEM V2.0.291
Humidity:54.2%
Test Distance:10.149m [K=1.0000]
Remarks:

Checker: Jianfei Wu

Assessor: Lijian Jiang

LUMINOUS DISTRIBUTION INTENSITY DATA

Table--1

UNIT: cd

C (DEG) γ (DEG)	0	15	30	45	60	75	90	105	120	135	150	165	180	195	210	225	240	255	270
0	163	162	162	162	161	161	161	161	161	162	162	162	163	162	162	162	161	161	161
5	161	161	161	161	160	160	160	161	160	162	162	162	163	163	162	162	161	161	160
10	158	158	158	158	158	158	158	159	159	160	160	161	162	161	161	161	160	159	159
15	154	154	154	154	154	154	155	155	156	158	158	159	159	159	158	158	157	156	156
20	149	149	149	149	149	149	150	151	152	154	154	155	155	155	155	155	153	152	152
25	143	143	142	142	143	144	144	146	146	148	149	149	150	150	149	149	148	147	146
30	135	135	135	135	135	136	137	139	140	142	142	143	144	144	143	143	141	140	139
35	126	126	126	126	127	128	129	131	132	134	135	135	137	136	135	136	134	133	131
40	116	116	116	117	117	119	120	122	123	126	126	127	128	127	127	127	125	124	122
45	105	105	105	106	107	108	110	112	113	116	116	117	118	118	117	117	115	114	112
50	93.2	92.6	93.2	93.7	94.9	96.4	98.5	100	102	105	106	107	107	107	106	106	104	103	101
55	80.3	79.8	80.3	81.0	82.3	84.1	86.2	88.4	90.2	92.6	93.8	94.6	95.2	95.2	94.4	94.1	92.2	90.6	88.6
60	66.6	66.1	66.6	67.5	68.8	70.8	73.0	75.4	77.6	79.8	81.2	82.1	82.6	82.6	81.8	81.3	79.4	77.5	75.5
65	52.2	51.9	52.2	53.3	54.7	56.8	59.0	61.8	63.9	66.3	67.8	68.8	69.2	69.1	68.4	67.6	65.7	63.8	61.7
70	37.9	37.6	37.8	38.9	40.1	42.3	44.4	47.4	49.5	52.1	53.6	54.9	55.2	55.0	54.4	53.2	51.5	49.1	47.3
75	24.4	24.1	24.0	25.0	25.9	28.0	30.0	32.9	35.3	37.8	39.3	40.7	41.1	40.7	40.1	38.6	37.0	34.4	32.7
80	13.0	12.7	12.4	12.8	13.3	14.8	16.4	19.1	21.5	24.1	25.7	27.1	27.5	27.0	26.4	24.7	23.0	20.4	18.8
85	5.49	5.24	4.84	4.65	4.42	4.74	5.51	7.75	10.0	12.4	13.9	15.3	15.7	15.1	14.4	12.7	11.0	8.55	5.75
90	1.69	1.56	1.28	1.06	0.77	0.56	0.14	1.52	2.81	4.43	5.67	6.78	7.09	6.75	6.07	4.70	3.32	1.75	0.97
95	0.41	0.37	0.29	0.21	0.16	0.12	0.11	0.11	0.24	0.86	1.40	1.92	2.07	1.96	1.60	0.96	0.49	0.08	0.09
100	0.23	0.23	0.20	0.18	0.17	0.16	0.16	0.15	0.15	0.16	0.19	0.34	0.41	0.37	0.31	0.12	0.11	0.11	0.12
105	0.24	0.23	0.21	0.22	0.21	0.22	0.20	0.20	0.18	0.19	0.18	0.17	0.15	0.15	0.14	0.13	0.15	0.16	0.17
110	0.27	0.28	0.27	0.28	0.26	0.27	0.25	0.26	0.24	0.24	0.22	0.22	0.18	0.17	0.18	0.18	0.20	0.20	0.22
115	0.33	0.33	0.32	0.33	0.32	0.33	0.31	0.31	0.29	0.29	0.27	0.27	0.23	0.22	0.24	0.23	0.25	0.25	0.28
120	0.38	0.38	0.38	0.39	0.38	0.38	0.37	0.37	0.35	0.35	0.32	0.33	0.29	0.27	0.29	0.29	0.31	0.31	0.33
125	0.43	0.43	0.43	0.44	0.42	0.44	0.42	0.42	0.40	0.40	0.38	0.38	0.34	0.33	0.34	0.34	0.36	0.36	0.39
130	0.47	0.48	0.47	0.48	0.47	0.48	0.47	0.47	0.45	0.45	0.43	0.43	0.39	0.38	0.39	0.39	0.41	0.41	0.44
135	0.52	0.53	0.52	0.53	0.52	0.53	0.52	0.52	0.49	0.50	0.48	0.48	0.44	0.43	0.44	0.44	0.46	0.46	0.48
140	0.55	0.57	0.56	0.57	0.55	0.57	0.55	0.56	0.55	0.54	0.52	0.53	0.48	0.47	0.49	0.49	0.51	0.50	0.52
145	0.59	0.61	0.59	0.60	0.59	0.60	0.59	0.60	0.58	0.58	0.56	0.57	0.53	0.52	0.53	0.53	0.55	0.55	0.56
150	0.62	0.64	0.63	0.64	0.62	0.64	0.62	0.63	0.61	0.62	0.60	0.61	0.57	0.56	0.57	0.57	0.59	0.58	0.60
155	0.66	0.67	0.66	0.66	0.66	0.66	0.66	0.66	0.64	0.65	0.64	0.64	0.61	0.59	0.61	0.60	0.62	0.61	0.63
160	0.68	0.69	0.68	0.69	0.67	0.68	0.67	0.68	0.67	0.67	0.66	0.67	0.65	0.63	0.64	0.63	0.65	0.64	0.66
165	0.70	0.71	0.70	0.71	0.69	0.71	0.69	0.70	0.69	0.70	0.68	0.69	0.68	0.66	0.67	0.66	0.68	0.67	0.69
170	0.72	0.73	0.72	0.72	0.72	0.72	0.72	0.72	0.71	0.72	0.71	0.72	0.71	0.69	0.70	0.69	0.70	0.70	0.71
175	0.74	0.74	0.72	0.73	0.72	0.73	0.73	0.73	0.72	0.73	0.73	0.74	0.73	0.72	0.73	0.72	0.73	0.72	0.73
180	0.75	0.74	0.73	0.74	0.73	0.73	0.73	0.73	0.74	0.74	0.75	0.75	0.75	0.74	0.74	0.73	0.73	0.73	0.74

C Range: 0 - 360DEG
C Interval: 15.0DEG
Test Speed: HIGH
Temperature:24.7DEG
Operators:Lingxin Xie
Test Date:2022-07-20

γ Range: 0 - 180DEG
γ Interval: 1.0DEG
Test System:EVERFINE GO-2000A_V1 SYSTEM V2.0.291
Humidity:54.2%
Test Distance:10.149m [K=1.0000]
Remarks:

Checker: Jianfei Wu

Assessor: Lijian Jiang

LUMINOUS DISTRIBUTION INTENSITY DATA

Table--2

UNIT: cd

C (DEG) γ (DEG)	285	300	315	330	345														
0	161	161	162	162	162														
5	160	160	161	161	161														
10	158	158	158	158	158														
15	155	155	155	154	155														
20	151	150	150	149	149														
25	145	144	143	143	143														
30	138	137	136	136	135														
35	130	129	128	127	127														
40	121	120	118	117	117														
45	111	109	107	106	106														
50	99.2	97.2	95.8	94.3	93.8														
55	86.9	84.8	83.2	81.6	80.9														
60	73.6	71.5	69.7	68.1	67.2														
65	59.6	57.5	55.5	54.0	52.7														
70	45.0	42.9	40.8	39.5	38.2														
75	30.4	28.6	26.7	25.7	24.6														
80	16.7	15.5	14.3	13.8	13.2														
85	5.84	5.73	5.51	5.59	5.48														
90	0.74	1.14	1.37	1.62	1.65														
95	0.09	0.17	0.29	0.36	0.37														
100	0.13	0.14	0.16	0.17	0.19														
105	0.17	0.19	0.19	0.19	0.19														
110	0.22	0.24	0.24	0.24	0.24														
115	0.27	0.29	0.28	0.29	0.28														
120	0.33	0.34	0.34	0.35	0.33														
125	0.38	0.40	0.39	0.40	0.38														
130	0.43	0.45	0.44	0.45	0.44														
135	0.47	0.49	0.48	0.50	0.48														
140	0.53	0.53	0.52	0.54	0.53														
145	0.55	0.57	0.56	0.58	0.56														
150	0.59	0.60	0.60	0.61	0.61														
155	0.62	0.63	0.63	0.64	0.64														
160	0.66	0.66	0.66	0.67	0.66														
165	0.68	0.69	0.69	0.70	0.69														
170	0.70	0.71	0.70	0.72	0.72														
175	0.72	0.73	0.72	0.74	0.73														
180	0.73	0.74	0.74	0.75	0.75														

C Range: 0 - 360DEG
 C Interval: 15.0DEG
 Test Speed: HIGH
 Temperature:24.7DEG
 Operators:Lingxin Xie
 Test Date:2022-07-20

Checker: Jianfei Wu

γ Range: 0 - 180DEG
 γ Interval: 1.0DEG
 Test System:EVERFINE GO-2000A_V1 SYSTEM V2.0.291
 Humidity:54.2%
 Test Distance:10.149m [K=1.0000]
 Remarks:

Assessor: Lijian Jiang