

Spectrum Test Report

Sample :
Specification : EKF5414HL90
Sample No. : 4
Manufacturer :

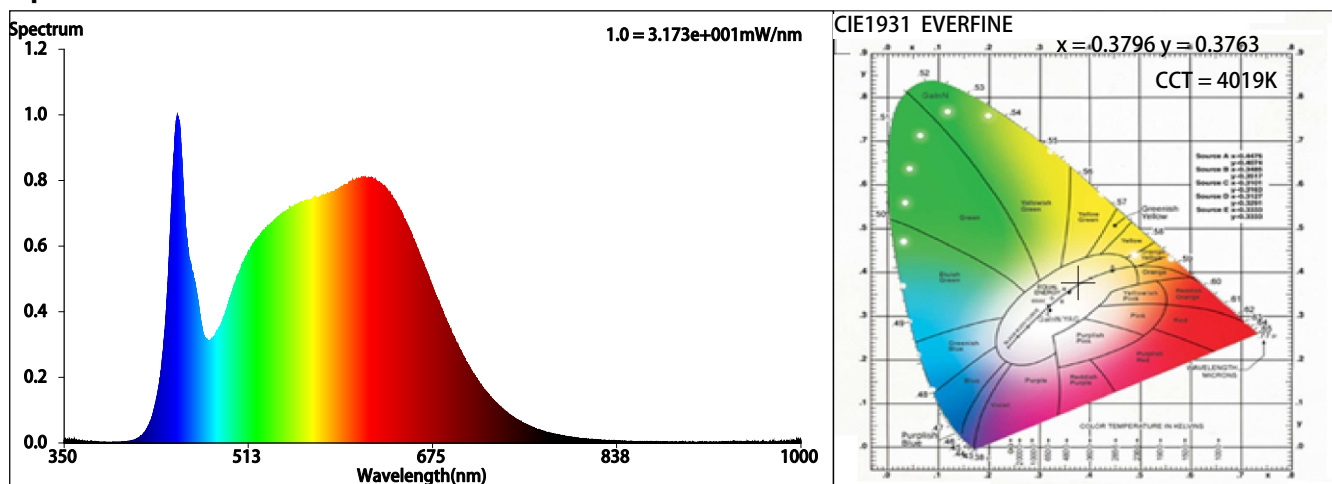
Date : 2022-04-09 14:13:29
Sam. Status :
Instrument : HAAS-2000(EVERFINE)
Test by : QC
Assessor : damin

Test Condition

Temperature : 25.3Deg
WL Range : 350nm-1000nm
Test Mode : Accuracy Test

RH : 55.0%
IP : 51152 (78%)
T : 188 ms
Sensitivity : High

Spectrum



Colorimetric Parameters

Chromaticity Coordinate: $x = 0.3796$ $y = 0.3763$ / $u' = 0.2247$ $v' = 0.5013$ ($duv=4.04e-05$)

CCT= 4019K Prcp WL: $L_d=579.0nm$ Purity=26.9%

Peak WL: $L_p=450nm$ FWHM: $=22.9nm$ Ratio: R=19.6% G=76.3% B=4.1%

Render Index: $R_a = 92.9$ TM30: $R_f=92$ $R_g=100$

R1=93 R2=95 R3=94 R4=93 R5=92 R6=91 R7=95

R8=88 R9=69 R10=86 R11=93 R12=71 R13=94 R14=97 R15=92

LEVEL:OUT WHITE:ANSI_4000K

Photometric & Radiometric Parameters

Flux = 1607.0 lm Eff. : 110.09 lm/W Fe = 5.5924 W

Electrical parameters

V = 24.00 V I = 0.6083 A P = 14.60 W PF = 1.000

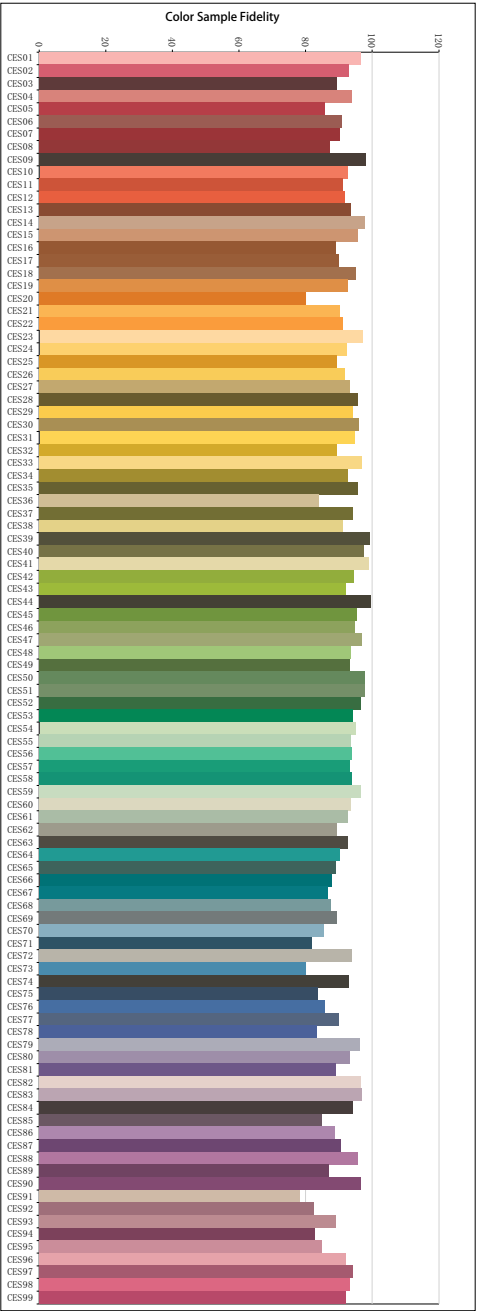
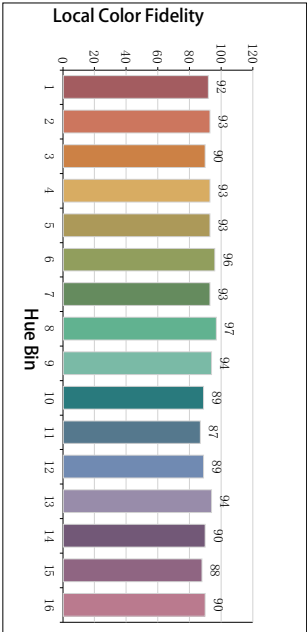
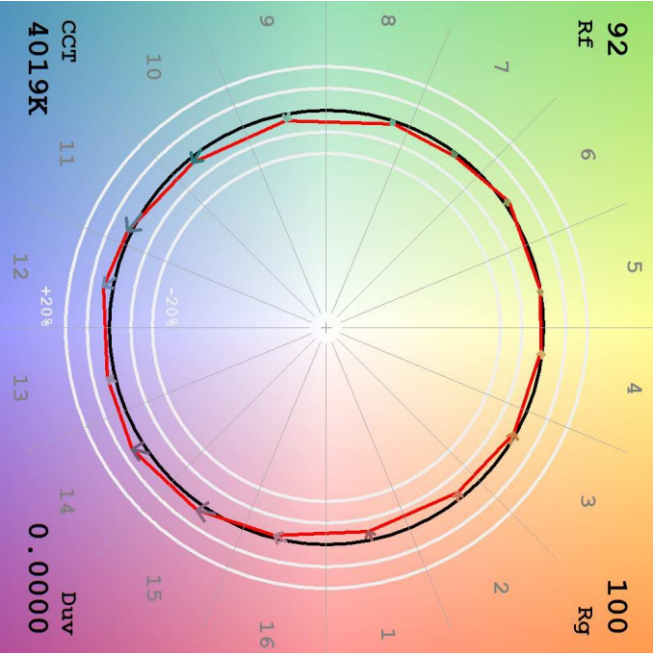
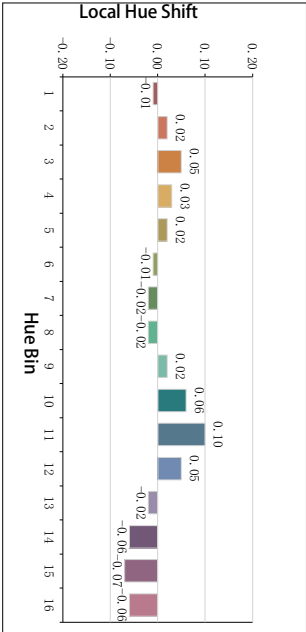
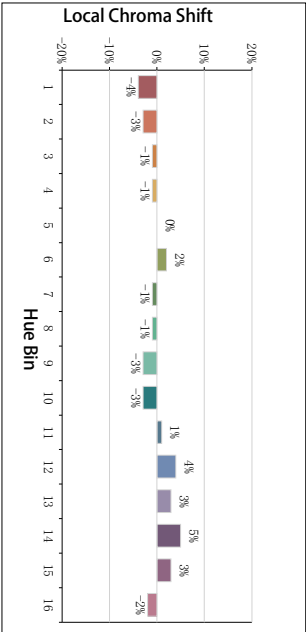
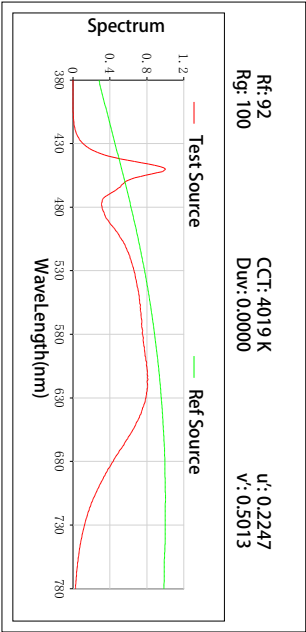
Freq=0.00 Hz

GBT5702

Ra = 93

Ga = 0.99

TM30



All Rf:

Rf1 = 96.5	Rf2 = 93.0	Rf3 = 89.5	Rf4 = 93.9
Rf5 = 85.8	Rf6 = 91.0	Rf7 = 90.4	Rf8 = 87.4
Rf9 = 98.1	Rf10 = 92.6	Rf11 = 91.3	Rf12 = 91.8
Rf13 = 93.8	Rf14 = 97.8	Rf15 = 95.7	Rf16 = 89.0
Rf17 = 90.1	Rf18 = 95.2	Rf19 = 92.7	Rf20 = 80.2
Rf21 = 90.3	Rf22 = 91.2	Rf23 = 97.1	Rf24 = 92.3
Rf25 = 89.5	Rf26 = 91.8	Rf27 = 93.4	Rf28 = 95.7
Rf29 = 94.1	Rf30 = 96.1	Rf31 = 94.7	Rf32 = 89.3
Rf33 = 96.9	Rf34 = 92.8	Rf35 = 95.6	Rf36 = 84.0
Rf37 = 94.2	Rf38 = 91.3	Rf39 = 99.3	Rf40 = 97.6
Rf41 = 98.9	Rf42 = 94.5	Rf43 = 92.0	Rf44 = 99.6
Rf45 = 95.5	Rf46 = 94.8	Rf47 = 96.8	Rf48 = 93.6
Rf49 = 93.3	Rf50 = 97.7	Rf51 = 97.8	Rf52 = 96.7
Rf53 = 94.1	Rf54 = 95.0	Rf55 = 93.8	Rf56 = 93.9
Rf57 = 93.4	Rf58 = 93.8	Rf59 = 96.6	Rf60 = 93.5
Rf61 = 92.8	Rf62 = 89.5	Rf63 = 92.5	Rf64 = 90.4
Rf65 = 89.3	Rf66 = 87.7	Rf67 = 86.6	Rf68 = 87.6
Rf69 = 89.3	Rf70 = 85.4	Rf71 = 81.9	Rf72 = 93.8
Rf73 = 80.1	Rf74 = 93.2	Rf75 = 83.7	Rf76 = 85.8
Rf77 = 89.9	Rf78 = 83.5	Rf79 = 96.3	Rf80 = 93.3
Rf81 = 89.2	Rf82 = 96.7	Rf83 = 96.8	Rf84 = 94.2
Rf85 = 85.0	Rf86 = 88.8	Rf87 = 90.6	Rf88 = 95.7
Rf89 = 87.0	Rf90 = 96.6	Rf91 = 78.3	Rf92 = 82.6
Rf93 = 89.1	Rf94 = 82.8	Rf95 = 85.0	Rf96 = 92.0
Rf97 = 94.1	Rf98 = 93.5	Rf99 = 92.0	