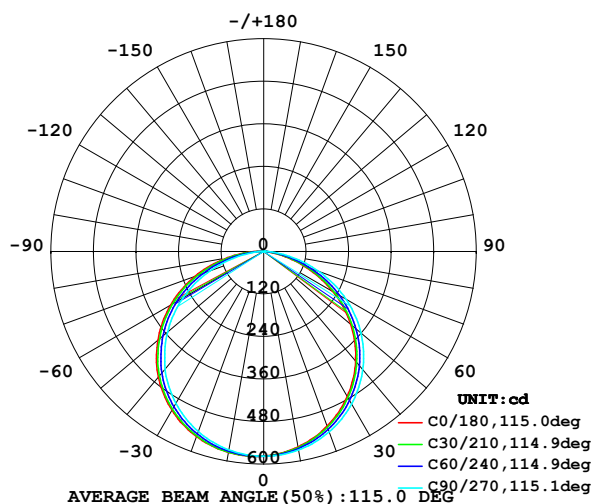


## LUMINAIRE PHOTOMETRIC TEST REPORT

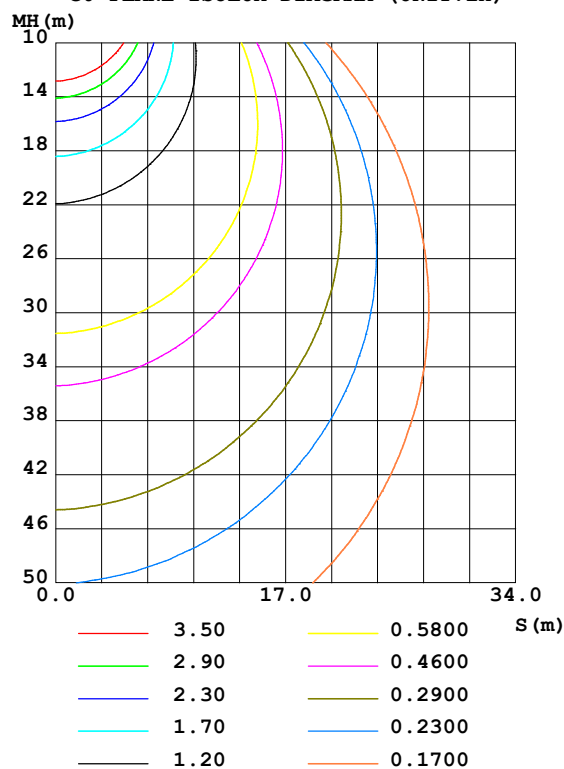
Test:U:24.00V I:0.6168A P:14.80W PF:1.000 Lamp Flux:1704.72x1 lm		
NAME: LED Soft light bar	SUR.:1.0m*0.01m	SERIAL No.:
MFR.: LEDIA		

DATA OF LAMP		PHOTOMETRIC DATA Eff: 115.17 lm/W			
MODEL	EKF5414HL90	Imax(cd)	579.0	S/MH(C0/180)	1.33
NOMINAL POWER(W)	14.4	LOR(%)	100.0	S/MH(C90/270)	1.27
RATED VOLTAGE(V)	24	TOTAL FLUX(lm)	1704.7	$\eta$ UP,DN(C0-180)	0.3,49.4
NOMINAL FLUX(lm)	1704.72	CIE CLASS	DIRECT	$\eta$ UP,DN(C180-360)	0.3,50.0
LAMPS INSIDE	1	$\eta$ up(%)	0.6	CIBSE SHR NOM	1.25
TEST VOLTAGE(V)	24	$\eta$ down(%)	99.4	CIBSE SHR MAX	1.35

LUMINOUS INTENSITY DISTRIBUTION DIAGRAM



C0 PLANE ISOLUX DIAGRAM (UNIT:lx)



C Range: 0 - 360DEG  
C Interval: 15.0DEG  
Test Speed: HIGH  
Temperature: 24.7DEG  
Operators: Lingxin Xie  
Test Date: 2022-07-1

$\gamma$  Range: 0 - 180DEG  
 $\gamma$  Interval: 1.0DEG  
Test System: EVERFINE GO-2000A\_V1 SYSTEM V2.0.291  
Humidity: 54.2%  
Test Distance: 10.149m [K=1.0000]  
Remarks:

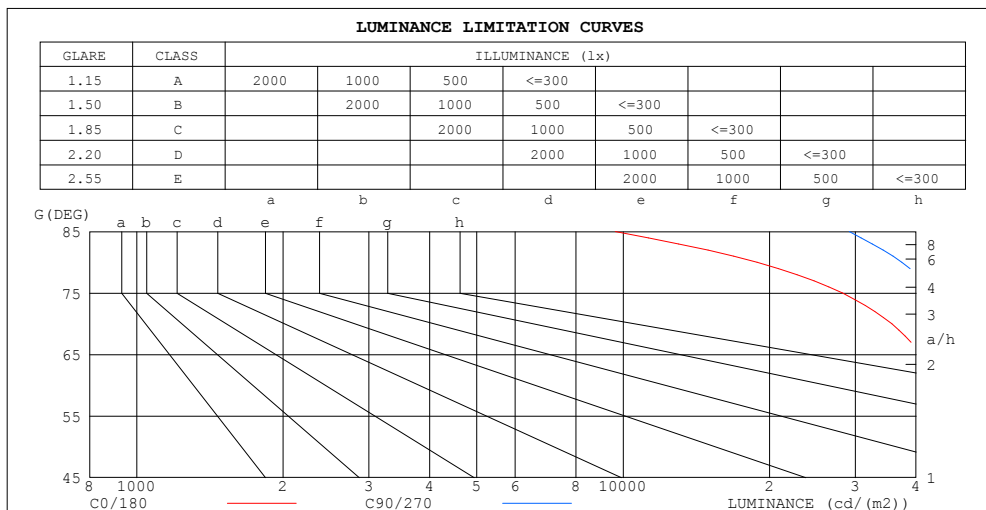
Checker: Jianfei Wu

Assessor: Lijian Jiang

### ZONAL FLUX DIAGRAM AND LUMINANCE LIMITATION CURVES

#### ZONAL FLUX DIAGRAM:

$\gamma$	C0	C45	C90	C135	C180	C225	C270	C315	$\gamma$	$\Phi$ zone	$\Phi$ total	%lum, lamp
10	560.0	563.1	568.8	574.2	575.6	573.2	568.1	562.7	0- 10	54.69	54.69	3.21,3.21
20	524.0	530.7	541.5	551.9	555.6	550.5	540.3	529.3	10- 20	157.2	211.9	12.4,12.4
30	472.2	480.6	496.5	512.5	517.3	510.0	495.1	479.5	20- 30	239.8	451.7	26.5,26.5
40	403.5	413.0	435.1	456.5	462.3	452.6	433.5	412.6	30- 40	291.9	743.6	43.6,43.6
50	320.8	332.1	358.3	381.9	389.5	378.9	354.1	331.0	40- 50	305.7	1049	61.6,61.6
60	224.9	238.1	267.7	295.3	304.0	291.2	263.0	236.7	50- 60	278.7	1328	77.9,77.9
70	121.9	135.5	165.6	197.2	206.7	190.6	161.4	133.1	60- 70	212.9	1541	90.4,90.4
80	32.76	41.30	64.97	94.36	103.9	87.78	61.14	39.78	70- 80	119.8	1661	97.4,97.4
90	1.080	1.342	0.6268	16.13	21.54	12.92	0.2542	1.435	80- 90	33.93	1695	99.4,99.4
100	0.6637	0.6151	0.5295	0.4449	0.5856	0.3672	0.4876	0.5436	90-100	2.418	1697	99.6,99.6
110	0.9883	0.9972	0.8882	0.8052	0.6355	0.6635	0.8474	0.8753	100-110	0.6970	1698	99.6,99.6
120	1.403	1.384	1.298	1.200	0.9891	1.029	1.250	1.256	110-120	1.018	1699	99.7,99.7
130	1.723	1.758	1.659	1.547	1.371	1.432	1.624	1.637	120-130	1.261	1700	99.7,99.7
140	2.012	2.056	1.983	1.892	1.723	1.772	1.949	1.941	130-140	1.359	1701	99.8,99.8
150	2.266	2.295	2.224	2.161	2.026	2.047	2.210	2.223	140-150	1.288	1703	99.9,99.9
160	2.457	2.492	2.435	2.387	2.309	2.315	2.408	2.388	150-160	1.059	1704	99.9,99.9
170	2.598	2.619	2.584	2.556	2.542	2.478	2.591	2.563	160-170	0.7027	1704	100,100
180	2.683	2.669	2.669	2.662	2.690	2.669	2.669	2.662	170-180	0.2486	1705	100,100
DEG	LUMINOUS INTENSITY:cd									UNIT:lm		



LUMINANCE cd/(m2)		
G (DEG)	C0/180	C90/270
85	9638	29185
80	18866	37416
75	28239	43975
70	35650	48414
65	41044	51439
60	44983	53542
55	47863	54852
50	49908	55745
45	51460	56398

C Range: 0 - 360DEG  
C Interval: 15.0DEG  
Test Speed: HIGH  
Temperature:24.7DEG  
Operators:Lingxin Xie  
Test Date:2022-07-1

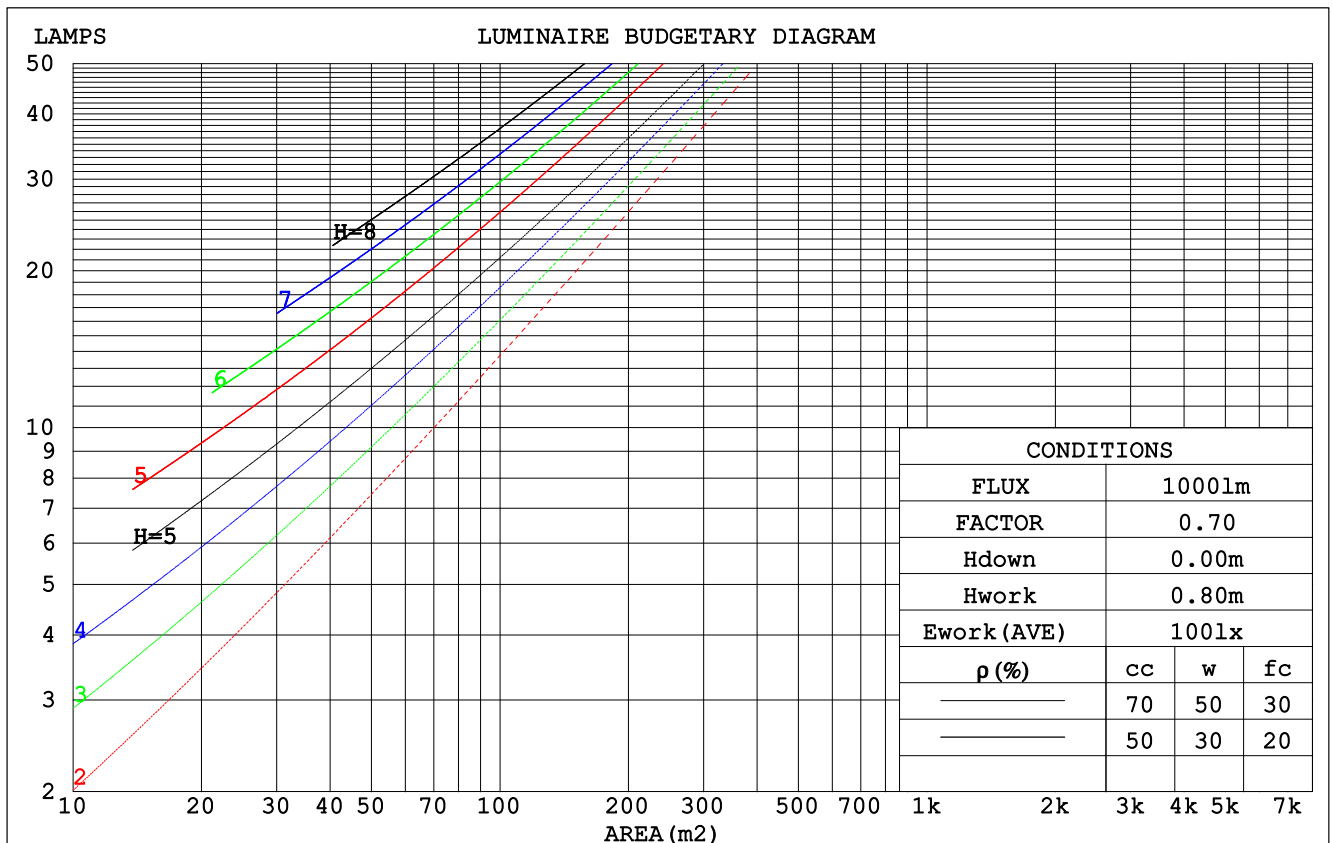
$\gamma$  Range: 0 - 180DEG  
 $\gamma$  Interval: 1.0DEG  
Test System:EVERFINE GO-2000A\_V1 SYSTEM V2.0.291  
Humidity:54.2%  
Test Distance:10.149m [K=1.0000]  
Remarks:

Checker: Jianfei Wu

Assessor: Lijian Jiang

## CU AND LUMINAIRE BUDGETARY ESTIMATE DIAGRAM

pcc	80%			70%			50%			30%			10%			0
pw	50%	30%	10%	50%	30%	10%	50%	30%	10%	50%	30%	10%	50%	30%	10%	0
pfc	20%			20%			20%			20%			20%			0
RCR	RCR:Room Cavity Ratio						Coefficients of Utilization(CU)									
0.0	1.19	1.19	1.19	1.16	1.16	1.16	1.11	1.11	1.11	1.06	1.06	1.06	1.01	1.01	1.01	.99
1.0	1.04	.99	.95	1.01	.97	.94	.97	.94	.91	.93	.90	.88	.89	.87	.85	.83
2.0	.90	.83	.77	.88	.82	.76	.84	.79	.75	.81	.77	.73	.78	.74	.71	.69
3.0	.79	.71	.64	.77	.70	.63	.74	.68	.62	.71	.66	.61	.69	.64	.60	.58
4.0	.70	.61	.54	.68	.60	.54	.66	.59	.53	.63	.57	.52	.61	.56	.51	.49
5.0	.62	.53	.47	.61	.53	.46	.59	.51	.46	.57	.50	.45	.55	.49	.45	.42
6.0	.56	.47	.41	.55	.46	.40	.53	.46	.40	.51	.45	.39	.50	.44	.39	.37
7.0	.51	.42	.36	.50	.41	.36	.48	.41	.35	.47	.40	.35	.45	.39	.35	.33
8.0	.46	.38	.32	.46	.37	.32	.44	.37	.31	.43	.36	.31	.42	.36	.31	.29
9.0	.42	.34	.29	.42	.34	.28	.41	.33	.28	.39	.33	.28	.38	.32	.28	.26
10.0	.39	.31	.26	.39	.31	.26	.38	.30	.26	.37	.30	.25	.36	.30	.25	.24



C Range: 0 - 360DEG  
 C Interval: 15.0DEG  
 Test Speed: HIGH  
 Temperature: 24.7DEG  
 Operators: Lingxin Xie  
 Test Date: 2022-07-1

γ Range: 0 - 180DEG  
 γ Interval: 1.0DEG  
 Test System: EVERFINE GO-2000A\_V1 SYSTEM V2.0.291  
 Humidity: 54.2%  
 Test Distance: 10.149m [K=1.0000]  
 Remarks:

Checker: Jianfei Wu

Assessor: Lijian Jiang

## WEC AND CCEC

pcc	80%			70%			50%			30%			10%			0
pw	50%	30%	10%	50%	30%	10%	50%	30%	10%	50%	30%	10%	50%	30%	10%	0
pfc	20%			20%			20%			20%			20%			0
RCR	RCR:Room Cavity Ratio						Wall Exitance Coefficients (WEC)									
0.0																
1.0	.312	.178	.056	.305	.174	.055	.291	.167	.053	.279	.161	.052	.267	.155	.050	
2.0	.294	.161	.049	.287	.158	.049	.275	.153	.048	.264	.148	.046	.254	.144	.045	
3.0	.272	.145	.043	.266	.142	.043	.255	.138	.042	.245	.134	.041	.236	.131	.040	
4.0	.250	.130	.038	.245	.128	.038	.236	.125	.037	.227	.122	.037	.219	.119	.036	
5.0	.231	.118	.034	.227	.117	.034	.219	.114	.034	.211	.111	.033	.203	.109	.033	
6.0	.215	.108	.031	.211	.106	.031	.203	.104	.030	.196	.102	.030	.190	.100	.030	
7.0	.200	.099	.028	.196	.098	.028	.189	.096	.028	.183	.094	.027	.177	.092	.027	
8.0	.186	.091	.026	.183	.090	.025	.177	.089	.025	.172	.087	.025	.166	.085	.025	
9.0	.175	.084	.024	.172	.084	.023	.166	.082	.023	.161	.081	.023	.156	.079	.023	
10.0	.164	.079	.022	.162	.078	.022	.157	.077	.022	.152	.076	.021	.148	.074	.021	

pcc	80%			70%			50%			30%			10%			0
pw	50%	30%	10%	50%	30%	10%	50%	30%	10%	50%	30%	10%	50%	30%	10%	0
pfc	20%			20%			20%			20%			20%			0
RCR	RCR:Room Cavity Ratio						Ceiling Cavity Exitance Coefficients (CCEC)									
0.0	.195	.195	.195	.167	.167	.167	.114	.114	.114	.065	.065	.065	.021	.021	.021	
1.0	.185	.161	.139	.158	.138	.119	.108	.095	.083	.062	.055	.048	.020	.018	.016	
2.0	.177	.136	.102	.152	.117	.088	.104	.081	.062	.060	.047	.036	.019	.015	.012	
3.0	.169	.119	.079	.145	.103	.068	.100	.071	.048	.058	.042	.028	.018	.014	.009	
4.0	.162	.106	.063	.139	.091	.054	.095	.064	.038	.055	.037	.023	.018	.012	.007	
5.0	.154	.095	.052	.133	.082	.045	.091	.058	.032	.053	.034	.019	.017	.011	.006	
6.0	.147	.087	.044	.127	.075	.038	.087	.053	.027	.051	.031	.016	.016	.010	.005	
7.0	.140	.080	.038	.121	.069	.033	.083	.049	.023	.048	.029	.014	.016	.009	.005	
8.0	.134	.074	.033	.115	.064	.029	.080	.045	.021	.046	.027	.012	.015	.009	.004	
9.0	.128	.069	.030	.110	.060	.026	.076	.042	.018	.044	.025	.011	.014	.008	.004	
10.0	.122	.065	.027	.105	.056	.024	.073	.040	.017	.043	.023	.010	.014	.008	.003	

C Range: 0 - 360DEG  
 C Interval: 15.0DEG  
 Test Speed: HIGH  
 Temperature:24.7DEG  
 Operators:Lingxin Xie  
 Test Date:2022-07-1

γ Range: 0 - 180DEG  
 γ Interval: 1.0DEG  
 Test System:EVERFINE GO-2000A\_V1 SYSTEM V2.0.291  
 Humidity:54.2%  
 Test Distance:10.149m [K=1.0000]  
 Remarks:

Checker: Jianfei Wu

Assessor: Lijian Jiang

UGR(Unified Glare Rating) Table

ceiling/cavity	0.7	0.7	0.5	0.5	0.3	0.7	0.7	0.5	0.5	0.3
walls	0.5	0.3	0.5	0.3	0.3	0.5	0.3	0.5	0.3	0.3
working plane	0.2	0.2	0.2	0.2	0.2	0.2	0.2	0.2	0.2	0.2
Room dimensions	Viewed crosswise					Viewed endwise				
x = 2H y = 2H	25.9	27.4	26.2	27.6	27.9	26.5	28.1	26.8	28.3	28.5
3H	27.1	28.5	27.4	28.8	29.0	28.1	29.5	28.4	29.7	30.0
4H	27.5	28.8	27.8	29.1	29.3	28.6	30.0	29.0	30.2	30.5
6H	27.6	28.9	27.9	29.1	29.4	29.0	30.3	29.3	30.6	30.8
8H	27.6	28.8	27.9	29.1	29.4	29.1	30.3	29.5	30.6	30.9
12H	27.6	28.7	27.9	29.0	29.4	29.2	30.3	29.5	30.6	31.0
4H 2H	26.5	27.9	26.8	28.1	28.4	27.0	28.4	27.3	28.6	28.9
3H	27.9	29.0	28.2	29.3	29.6	28.7	29.8	29.0	30.1	30.5
4H	28.3	29.4	28.7	29.7	30.0	29.3	30.4	29.7	30.7	31.1
6H	28.5	29.5	28.9	29.8	30.2	29.8	30.8	30.2	31.1	31.5
8H	28.5	29.4	29.0	29.8	30.2	30.0	30.9	30.4	31.2	31.6
12H	28.5	29.3	29.0	29.7	30.1	30.0	30.9	30.5	31.3	31.7
8H 4H	28.5	29.4	28.9	29.8	30.2	29.5	30.3	29.9	30.7	31.1
6H	28.8	29.5	29.2	29.9	30.4	30.0	30.8	30.5	31.2	31.6
8H	28.8	29.5	29.3	29.9	30.4	30.2	30.9	30.7	31.3	31.8
12H	28.9	29.4	29.3	29.9	30.4	30.4	30.9	30.8	31.4	31.9
12H 4H	28.5	29.3	28.9	29.7	30.1	29.4	30.2	29.9	30.6	31.1
6H	28.8	29.5	29.3	29.9	30.4	30.0	30.7	30.5	31.1	31.6
8H	28.9	29.4	29.4	29.9	30.4	30.2	30.8	30.7	31.3	31.7
Variations with the observer position at spacings:										
S = 1.0H	+ 0.2 / - 0.3					+ 0.2 / - 0.2				
1.5H	+ 0.2 / - 0.4					+ 0.2 / - 0.3				
2.0H	+ 0.3 / - 0.4					+ 0.3 / - 0.4				

CIE Pub.117 Corrected 1705 lm Total Lamp Luminous Flux.(8log(F/F0) = 1.9)

C Range: 0 - 360DEG  
C Interval: 15.0DEG  
Test Speed: HIGH  
Temperature:24.7DEG  
Operators:Lingxin Xie  
Test Date:2022-07-1

Checker: Jianfei Wu

$\gamma$  Range: 0 - 180DEG  
 $\gamma$  Interval: 1.0DEG  
Test System:EVERFINE GO-2000A\_V1 SYSTEM V2.0.291  
Humidity:54.2%  
Test Distance:10.149m [K=1.0000]  
Remarks:

Assessor: Lijian Jiang

## UTILIZATION FACTORS TABLE

REFLECTANCE										
Ceiling	0.8	0.8	0.8	0.7	0.7	0.7	0.5	0.5	0.5	0
Walls	0.7	0.5	0.3	0.7	0.5	0.3	0.7	0.5	0.3	0
Working plane	0.2	0.2	0.2	0.2	0.2	0.2	0.2	0.2	0.2	0
ROOM INDEX	UTILIZATION FACTORS (PERCENT) $k(RI) \times RCR = 5$									
$k = 0.60$	57	45	38	56	45	38	55	44	38	31
0.80	67	55	48	66	55	48	64	54	47	40
1.00	75	64	57	74	64	57	72	65	56	49
1.25	83	72	65	81	71	64	78	70	63	56
1.50	88	78	71	86	77	70	83	75	69	61
2.00	95	86	79	93	85	79	89	82	77	69
2.50	98	91	84	96	89	84	92	86	82	73
3.00	102	95	89	100	93	88	96	90	86	77
4.00	106	100	95	103	98	94	99	95	91	82
5.00	108	103	99	106	101	98	101	98	95	85
ROOM INDEX	UF (total)									Direct
According to DIN EN 13032-2 2004			Suspended					SHRNOM = 1.25		

C Range: 0 - 360DEG  
 C Interval: 15.0DEG  
 Test Speed: HIGH  
 Temperature: 24.7DEG  
 Operators: Lingxin Xie  
 Test Date: 2022-07-1

Checker: Jianfei Wu

$\gamma$  Range: 0 - 180DEG  
 $\gamma$  Interval: 1.0DEG  
 Test System: EVERFINE GO-2000A\_V1 SYSTEM V2.0.291  
 Humidity: 54.2%  
 Test Distance: 10.149m [K=1.0000]  
 Remarks:

Assessor: Lijian Jiang

## ISOCANDELA DIAGRAM

Conical surface Flux(90deg):

897.35 lm

%lum = 52.6%

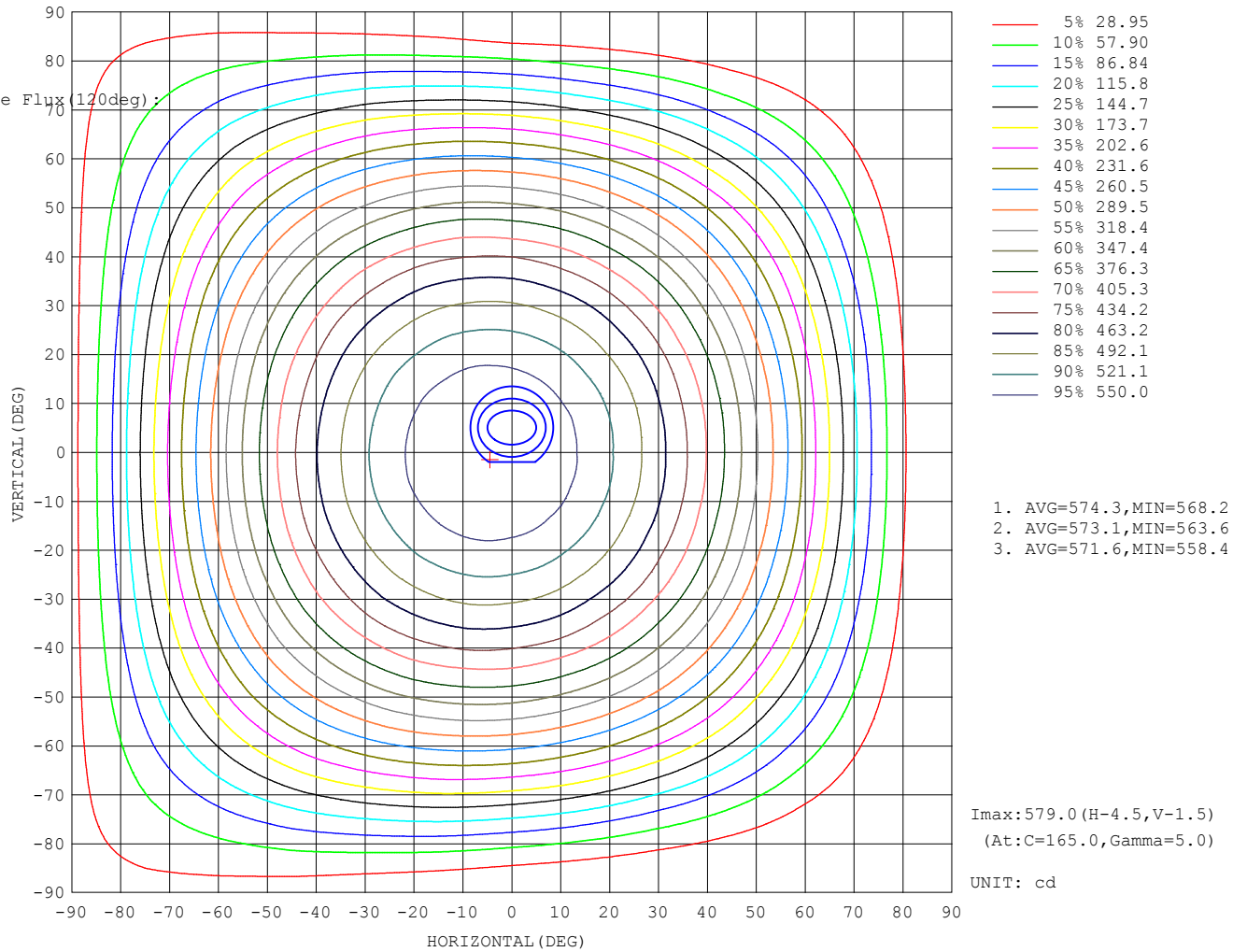
%lamp = 52.6%

Conical surface Flux(120deg):

1328.1 lm

%lum = 77.9%

%lamp = 77.9%



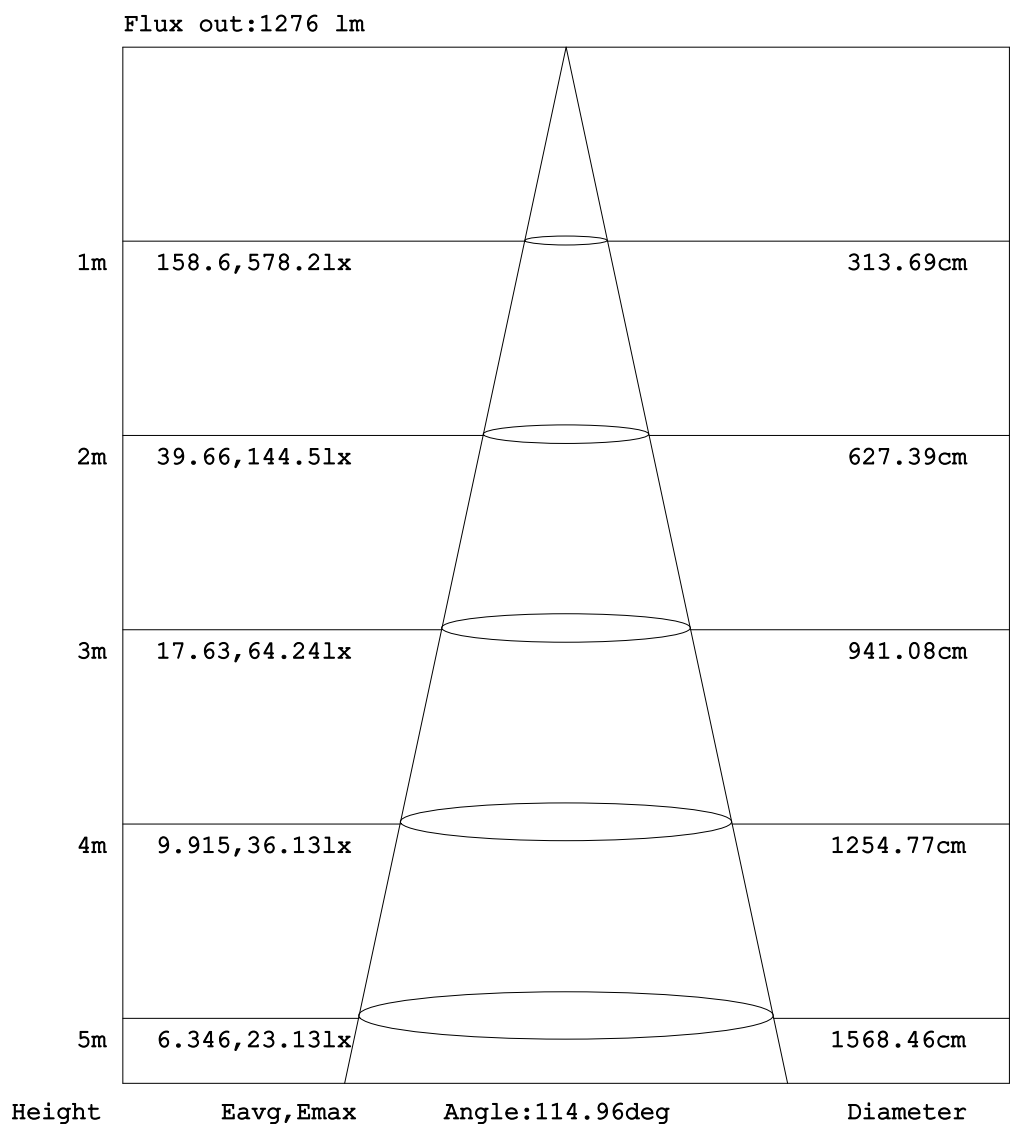
C Range: 0 - 360DEG  
C Interval: 15.0DEG  
Test Speed: HIGH  
Temperature:24.7DEG  
Operators:Lingxin Xie  
Test Date:2022-07-1

$\gamma$  Range: 0 - 180DEG  
 $\gamma$  Interval: 1.0DEG  
Test System:EVERFINE GO-2000A\_V1 SYSTEM V2.0.291  
Humidity:54.2%  
Test Distance:10.149m [K=1.0000]  
Remarks:

Checker: Jianfei Wu

Assessor: Lijian Jiang

## AAI Figure



Note: The Curves indicate the illuminated area and the average illumination when the luminaire is at different distance.

C Range: 0 - 360DEG  
C Interval: 15.0DEG  
Test Speed: HIGH  
Temperature: 24.7DEG  
Operators: Lingxin Xie  
Test Date: 2022-07-1

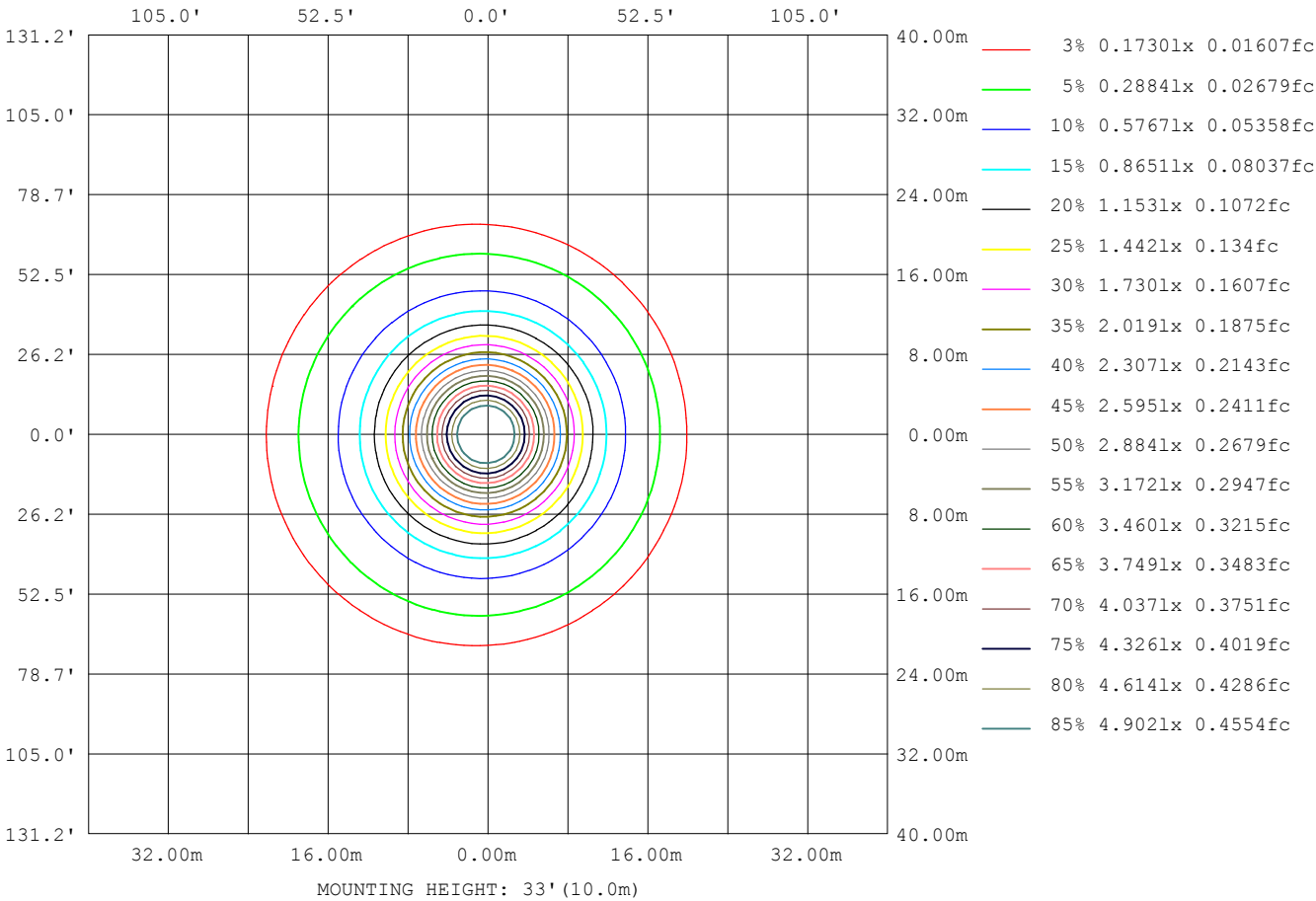
$\gamma$  Range: 0 - 180DEG  
 $\gamma$  Interval: 1.0DEG  
Test System: EVERFINE GO-2000A\_V1 SYSTEM V2.0.291  
Humidity: 54.2%  
Test Distance: 10.149m [K=1.0000]  
Remarks:

Checker: Jianfei Wu

Assessor: Lijian Jiang



ISOLUX DIAGRAM



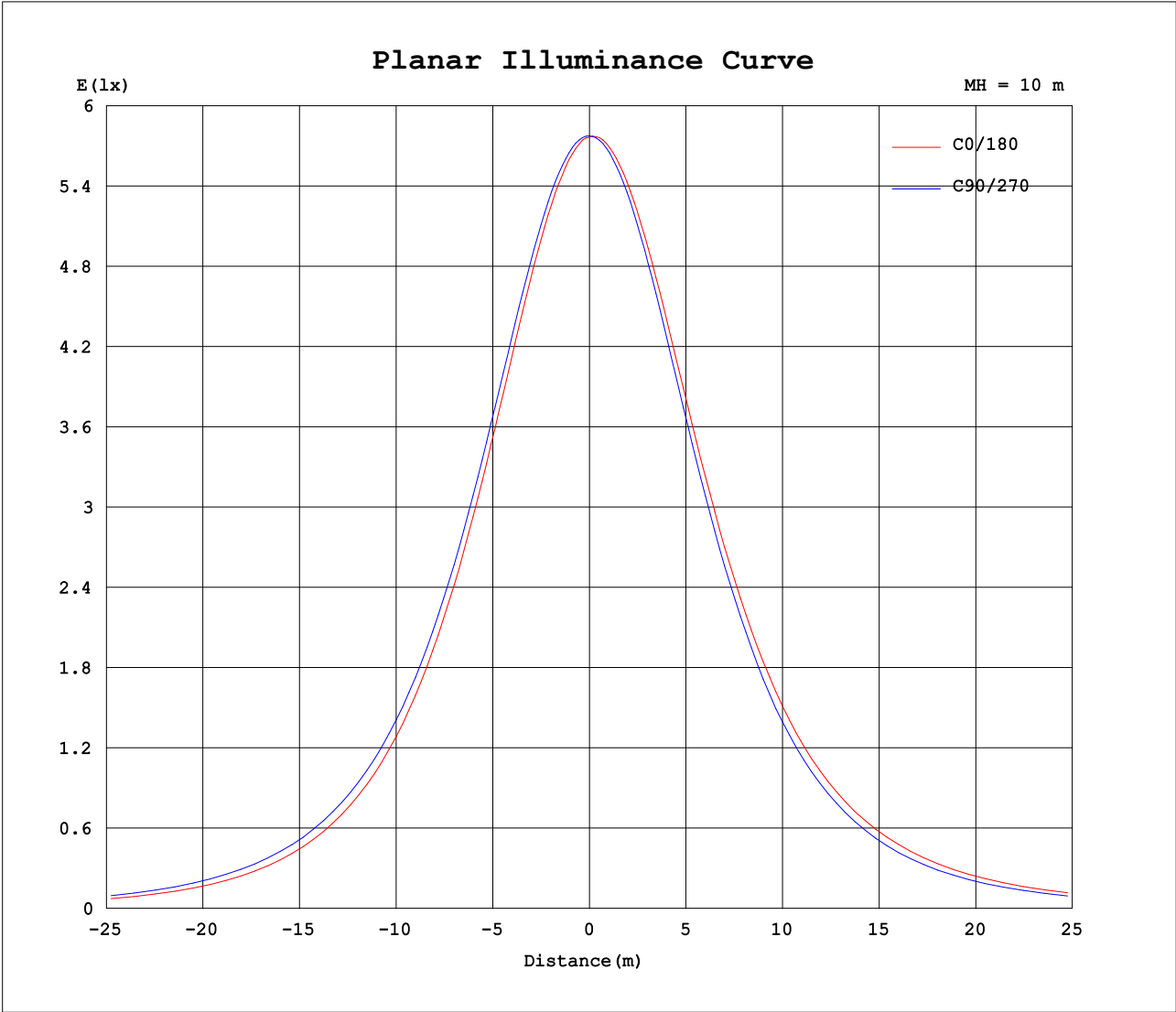
C Range: 0 - 360DEG  
C Interval: 15.0DEG  
Test Speed: HIGH  
Temperature:24.7DEG  
Operators:Lingxin Xie  
Test Date:2022-07-1

Checker: Jianfei Wu

γ Range: 0 - 180DEG  
γ Interval: 1.0DEG  
Test System:EVERFINE GO-2000A\_V1 SYSTEM V2.0.291  
Humidity:54.2%  
Test Distance:10.149m [K=1.0000]  
Remarks:

Assessor: Lijian Jiang

Planar Illuminance Curve



C Range: 0 - 360DEG  
C Interval: 15.0DEG  
Test Speed: HIGH  
Temperature:24.7DEG  
Operators:Lingxin Xie  
Test Date:2022-07-1

$\gamma$  Range: 0 - 180DEG  
 $\gamma$  Interval: 1.0DEG  
Test System:EVERFINE GO-2000A\_V1 SYSTEM V2.0.291  
Humidity:54.2%  
Test Distance:10.149m [K=1.0000]  
Remarks:

Checker: Jianfei Wu

Assessor: Lijian Jiang

## LUMINOUS DISTRIBUTION INTENSITY DATA

Table--1

UNIT: cd

C (DEG) γ (DEG)	0	15	30	45	60	75	90	105	120	135	150	165	180	195	210	225	240	255	270
0	577	577	577	578	578	578	578	578	578	577	578	578	577	577	577	578	578	578	578
5	571	571	572	572	574	575	576	577	578	578	579	579	579	578	579	578	577	576	575
10	560	560	562	563	565	567	569	571	573	574	575	576	576	575	575	573	572	570	568
15	544	545	547	549	551	555	557	561	563	566	568	568	568	567	567	564	562	559	557
20	524	526	528	531	534	538	542	546	549	552	554	556	556	555	554	551	548	544	540
25	501	502	504	508	511	517	521	526	531	535	537	539	539	538	536	533	529	524	520
30	472	474	476	481	485	491	497	503	508	513	515	517	517	516	515	510	506	500	495
35	440	442	444	450	455	462	468	475	481	486	489	492	492	490	488	483	479	472	466
40	403	404	408	413	420	428	435	444	450	457	459	462	462	460	458	453	448	440	434
45	364	365	369	374	382	389	399	406	415	421	425	428	428	426	423	418	410	404	395
50	321	322	326	332	340	348	358	367	376	382	387	389	389	388	384	379	371	364	354
55	275	276	280	287	295	304	315	324	334	340	346	348	349	347	342	337	328	320	310
60	225	227	231	238	247	257	268	278	288	295	301	304	304	302	298	291	283	273	263
65	173	176	179	187	196	207	217	229	239	248	253	257	257	255	249	243	233	223	213
70	122	124	128	136	144	155	166	178	187	197	202	206	207	203	199	191	182	171	161
75	73.1	75.2	78.2	85.1	92.6	104	114	126	136	145	151	155	155	152	147	139	130	119	110
80	32.8	34.3	36.3	41.3	47.1	56.0	65.0	76.0	85.1	94.4	99.5	104	104	100	95.8	87.8	79.7	69.4	61.1
85	8.40	9.05	9.79	12.0	14.8	19.7	25.4	33.7	41.0	48.6	53.2	56.5	56.8	53.7	49.8	43.0	36.5	28.6	17.8
90	1.08	1.11	1.13	1.34	1.58	1.60	0.63	7.23	11.5	16.1	19.1	21.4	21.5	19.5	17.0	12.9	9.33	5.46	0.25
95	0.68	0.67	0.65	0.60	0.48	0.40	0.37	0.35	0.89	2.45	3.59	4.44	4.49	3.88	3.00	1.91	0.80	0.31	0.35
100	0.66	0.68	0.64	0.62	0.56	0.57	0.53	0.50	0.43	0.44	0.49	0.65	0.59	0.52	0.40	0.37	0.41	0.42	0.49
105	0.79	0.83	0.77	0.80	0.76	0.76	0.70	0.69	0.65	0.62	0.53	0.57	0.47	0.43	0.50	0.50	0.56	0.56	0.66
110	0.99	1.02	0.99	1.00	0.95	0.95	0.89	0.88	0.78	0.81	0.75	0.73	0.64	0.64	0.66	0.66	0.74	0.76	0.85
115	1.20	1.22	1.19	1.19	1.14	1.16	1.09	1.09	0.99	0.97	0.91	0.92	0.80	0.76	0.83	0.86	0.93	0.97	1.05
120	1.40	1.41	1.37	1.38	1.33	1.36	1.30	1.29	1.20	1.20	1.10	1.12	0.99	0.97	1.03	1.03	1.12	1.14	1.25
125	1.55	1.59	1.54	1.57	1.53	1.55	1.49	1.48	1.39	1.41	1.31	1.31	1.17	1.14	1.22	1.21	1.31	1.33	1.44
130	1.72	1.77	1.70	1.76	1.68	1.72	1.66	1.67	1.55	1.55	1.48	1.50	1.37	1.33	1.41	1.43	1.51	1.52	1.62
135	1.88	1.93	1.88	1.92	1.87	1.90	1.83	1.82	1.75	1.75	1.66	1.67	1.55	1.54	1.60	1.58	1.70	1.69	1.79
140	2.01	2.08	2.00	2.06	2.00	2.03	1.98	1.98	1.88	1.89	1.81	1.84	1.72	1.69	1.77	1.77	1.86	1.87	1.95
145	2.15	2.20	2.15	2.19	2.12	2.17	2.11	2.11	2.03	2.03	1.98	1.99	1.89	1.88	1.92	1.91	2.01	2.00	2.08
150	2.27	2.32	2.27	2.29	2.24	2.29	2.22	2.25	2.17	2.16	2.10	2.14	2.03	1.99	2.05	2.05	2.13	2.12	2.21
155	2.36	2.42	2.36	2.40	2.34	2.39	2.34	2.35	2.28	2.29	2.23	2.27	2.17	2.12	2.18	2.20	2.27	2.24	2.31
160	2.46	2.51	2.46	2.49	2.44	2.48	2.44	2.44	2.38	2.39	2.34	2.38	2.31	2.24	2.31	2.31	2.37	2.34	2.41
165	2.58	2.58	2.56	2.56	2.51	2.54	2.51	2.52	2.49	2.46	2.46	2.49	2.44	2.38	2.44	2.40	2.47	2.46	2.51
170	2.60	2.63	2.59	2.62	2.57	2.61	2.58	2.60	2.57	2.56	2.54	2.56	2.54	2.47	2.53	2.48	2.56	2.54	2.59
175	2.68	2.66	2.62	2.65	2.60	2.65	2.62	2.63	2.64	2.62	2.58	2.63	2.63	2.58	2.61	2.56	2.63	2.58	2.63
180	2.68	2.67	2.67	2.67	2.67	2.66	2.67	2.67	2.66	2.66	2.66	2.68	2.69	2.68	2.67	2.67	2.66	2.68	2.67

C Range: 0 - 360DEG  
C Interval: 15.0DEG  
Test Speed: HIGH  
Temperature:24.7DEG  
Operators:Lingxin Xie  
Test Date:2022-07-1

γ Range: 0 - 180DEG  
γ Interval: 1.0DEG  
Test System:EVERFINE GO-2000A\_V1 SYSTEM V2.0.291  
Humidity:54.2%  
Test Distance:10.149m [K=1.0000]  
Remarks:

Checker: Jianfei Wu

Assessor: Lijian Jiang

## LUMINOUS DISTRIBUTION INTENSITY DATA

Table--2

UNIT: cd

C (DEG) γ (DEG)	285	300	315	330	345													
0	578	578	577	578	578													
5	574	573	572	572	571													
10	566	564	563	562	560													
15	553	551	548	547	545													
20	536	533	529	527	526													
25	515	511	506	504	502													
30	489	484	479	476	474													
35	459	454	448	445	441													
40	425	418	413	407	405													
45	388	379	373	368	365													
50	346	338	331	325	322													
55	302	293	285	279	276													
60	254	245	237	231	227													
65	202	194	185	180	175													
70	150	142	133	128	123													
75	99.0	91.2	83.1	78.7	74.4													
80	52.1	45.9	39.8	36.6	33.8													
85	17.2	14.2	11.3	9.94	8.87													
90	1.62	1.70	1.43	1.31	1.11													
95	0.33	0.42	0.57	0.56	0.64													
100	0.49	0.54	0.54	0.57	0.59													
105	0.66	0.72	0.70	0.74	0.72													
110	0.85	0.92	0.88	0.93	0.87													
115	1.02	1.11	1.07	1.12	1.07													
120	1.23	1.30	1.26	1.31	1.26													
125	1.43	1.49	1.45	1.50	1.44													
130	1.61	1.66	1.64	1.67	1.64													
135	1.78	1.83	1.79	1.84	1.79													
140	1.91	1.98	1.94	2.00	1.95													
145	2.05	2.09	2.10	2.13	2.11													
150	2.19	2.22	2.22	2.24	2.21													
155	2.27	2.32	2.31	2.35	2.34													
160	2.37	2.43	2.39	2.45	2.41													
165	2.46	2.53	2.47	2.53	2.48													
170	2.56	2.59	2.56	2.60	2.58													
175	2.60	2.63	2.59	2.64	2.63													
180	2.67	2.67	2.66	2.66	2.68													

C Range: 0 - 360DEG  
 C Interval: 15.0DEG  
 Test Speed: HIGH  
 Temperature:24.7DEG  
 Operators:Lingxin Xie  
 Test Date:2022-07-1

Checker: Jianfei Wu

γ Range: 0 - 180DEG  
 γ Interval: 1.0DEG  
 Test System:EVERFINE GO-2000A\_V1 SYSTEM V2.0.291  
 Humidity:54.2%  
 Test Distance:10.149m [K=1.0000]  
 Remarks:

Assessor: Lijian Jiang