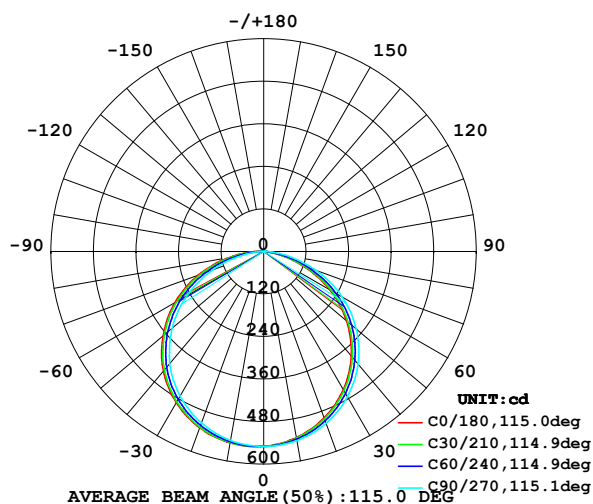


LUMINAIRE PHOTOMETRIC TEST REPORT

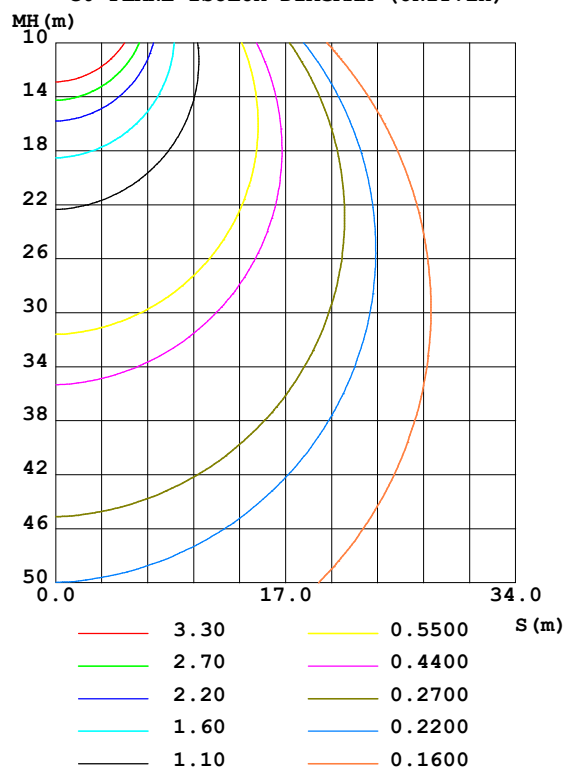
Test:U:24.00V I:0.6211A P:14.91W PF:1.000 Lamp Flux:1623.54x1 lm		
NAME: LED Soft light bar	SUR.:1.0m*0.01m	SERIAL No.:
MFR.: LEDIA		

DATA OF LAMP		PHOTOMETRIC DATA Eff: 108.92 lm/W			
MODEL	EKF5214HL90	I _{max} (cd)	551.5	S/MH (C0/180)	1.33
NOMINAL POWER(W)	14.4	LOR(%)	100.0	S/MH (C90/270)	1.27
RATED VOLTAGE(V)	24	TOTAL FLUX(lm)	1623.5	η UP,DN(C0-180)	0.3,49.4
NOMINAL FLUX(lm)	1623.54	CIE CLASS	DIRECT	η UP,DN(C180-360)	0.3,50.0
LAMPS INSIDE	1	η up(%)	0.6	CIBSE SHR NOM	1.25
TEST VOLTAGE(V)	24	η down(%)	99.4	CIBSE SHR MAX	1.35

LUMINOUS INTENSITY DISTRIBUTION DIAGRAM



C0 PLANE ISOLUX DIAGRAM (UNIT:lx)



C Range: 0 - 360DEG
C Interval: 15.0DEG
Test Speed: HIGH
Temperature:24.7DEG
Operators:Lingxin Xie
Test Date:2022-07-1

Checker: Jianfei Wu

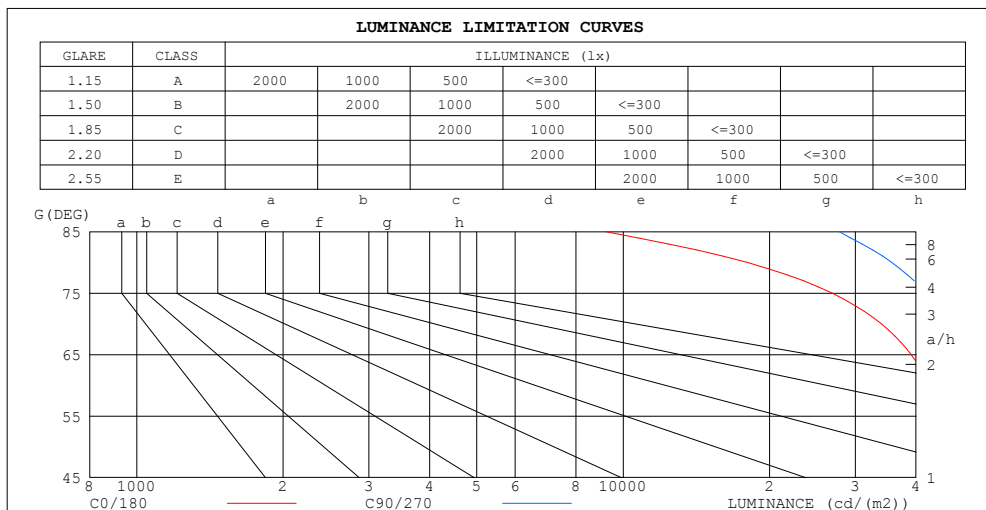
γ Range: 0 - 180DEG
γ Interval: 1.0DEG
Test System:EVERFINE GO-2000A_V1 SYSTEM V2.0.291
Humidity:54.2%
Test Distance:10.149m [K=1.0000]
Remarks:

Assessor: Lijian Jiang

ZONAL FLUX DIAGRAM AND LUMINANCE LIMITATION CURVES

ZONAL FLUX DIAGRAM:

γ	C0	C45	C90	C135	C180	C225	C270	C315	γ	Φ zone	Φ total	%lum, lamp
10	533.3	536.2	541.7	546.9	548.2	545.9	541.0	535.9	0- 10	52.08	52.08	3.21,3.21
20	499.1	505.4	515.7	525.6	529.2	524.3	514.6	504.1	10- 20	149.7	201.8	12.4,12.4
30	449.7	457.7	472.9	488.1	492.7	485.7	471.5	456.7	20- 30	228.4	430.2	26.5,26.5
40	384.2	393.3	414.4	434.8	440.2	431.0	412.9	393.0	30- 40	278.0	708.2	43.6,43.6
50	305.5	316.3	341.3	363.7	370.9	360.9	337.2	315.2	40- 50	291.1	999.4	61.6,61.6
60	214.2	226.8	255.0	281.3	289.5	277.3	250.5	225.4	50- 60	265.5	1265	77.9,77.9
70	116.1	129.1	157.7	187.8	196.9	181.5	153.7	126.8	60- 70	202.8	1468	90.4,90.4
80	31.20	39.33	61.88	89.86	98.92	83.60	58.23	37.89	70- 80	114.1	1582	97.4,97.4
90	1.029	1.278	0.5969	15.36	20.52	12.30	0.2421	1.366	80- 90	32.31	1614	99.4,99.4
100	0.6321	0.5858	0.5043	0.4237	0.5577	0.3497	0.4644	0.5177	90-100	2.303	1616	99.6,99.6
110	0.9413	0.9497	0.8459	0.7668	0.6052	0.6319	0.8071	0.8336	100-110	0.6638	1617	99.6,99.6
120	1.336	1.318	1.236	1.143	0.9420	0.9798	1.190	1.196	110-120	0.9693	1618	99.7,99.7
130	1.641	1.675	1.580	1.474	1.306	1.363	1.547	1.559	120-130	1.201	1619	99.7,99.7
140	1.916	1.958	1.888	1.802	1.641	1.687	1.856	1.849	130-140	1.294	1620	99.8,99.8
150	2.158	2.185	2.118	2.058	1.930	1.949	2.105	2.118	140-150	1.227	1622	99.9,99.9
160	2.340	2.374	2.319	2.273	2.199	2.204	2.293	2.274	150-160	1.009	1623	99.9,99.9
170	2.474	2.495	2.461	2.434	2.421	2.360	2.468	2.441	160-170	0.6693	1623	100,100
180	2.555	2.542	2.542	2.535	2.562	2.542	2.542	2.535	170-180	0.2368	1624	100,100
DEG	LUMINOUS INTENSITY:cd									UNIT:lm		



LUMINANCE cd/(m2)		
G (DEG)	C0/180	C90/270
85	9179	27795
80	17967	35634
75	26894	41881
70	33952	46108
65	39089	48990
60	42841	50993
55	45584	52240
50	47531	53090
45	49009	53713

C Range: 0 - 360DEG
C Interval: 15.0DEG
Test Speed: HIGH
Temperature:24.7DEG
Operators:Lingxin Xie
Test Date:2022-07-1

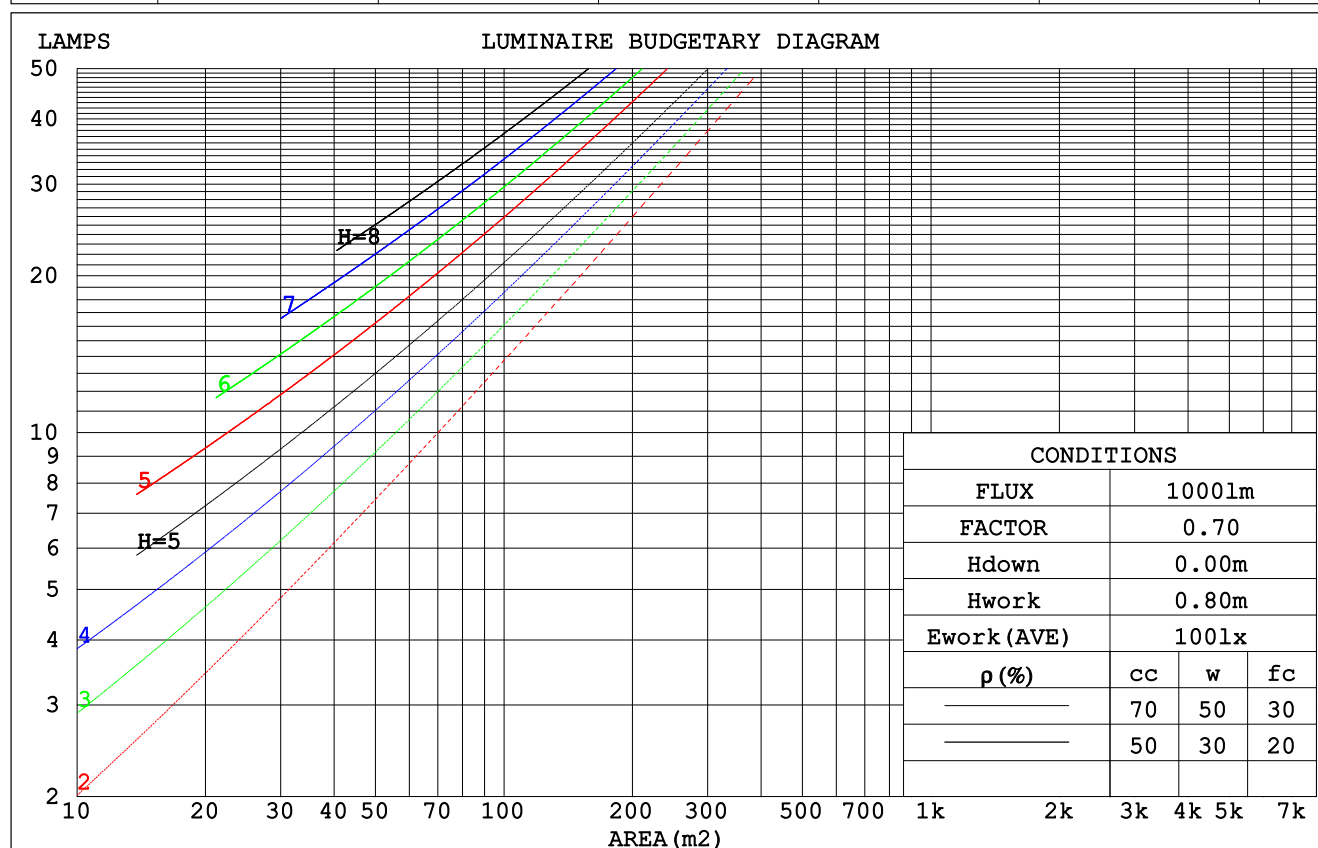
γ Range: 0 - 180DEG
 γ Interval: 1.0DEG
Test System:EVERFINE GO-2000A_V1 SYSTEM V2.0.291
Humidity:54.2%
Test Distance:10.149m [K=1.0000]
Remarks:

Checker: Jianfei Wu

Assessor: Lijian Jiang

CU AND LUMINAIRE BUDGETARY ESTIMATE DIAGRAM

pcc	80%			70%			50%			30%			10%			0
pw	50%	30%	10%	50%	30%	10%	50%	30%	10%	50%	30%	10%	50%	30%	10%	0
pfc	20%			20%			20%			20%			20%			0
RCR	RCR:Room Cavity Ratio						Coefficients of Utilization(CU)									
0.0	1.19	1.19	1.19	1.16	1.16	1.16	1.11	1.11	1.11	1.06	1.06	1.06	1.01	1.01	1.01	.99
1.0	1.04	.99	.95	1.01	.97	.94	.97	.94	.91	.93	.90	.88	.89	.87	.85	.83
2.0	.90	.83	.77	.88	.82	.76	.84	.79	.75	.81	.77	.73	.78	.74	.71	.69
3.0	.79	.71	.64	.77	.70	.63	.74	.68	.62	.71	.66	.61	.69	.64	.60	.58
4.0	.70	.61	.54	.68	.60	.54	.66	.59	.53	.63	.57	.52	.61	.56	.51	.49
5.0	.62	.53	.47	.61	.53	.46	.59	.51	.46	.57	.50	.45	.55	.49	.45	.42
6.0	.56	.47	.41	.55	.46	.40	.53	.46	.40	.51	.45	.39	.50	.44	.39	.37
7.0	.51	.42	.36	.50	.41	.36	.48	.41	.35	.47	.40	.35	.45	.39	.35	.33
8.0	.46	.38	.32	.46	.37	.32	.44	.37	.31	.43	.36	.31	.42	.36	.31	.29
9.0	.42	.34	.29	.42	.34	.28	.41	.33	.28	.39	.33	.28	.38	.32	.28	.26
10.0	.39	.31	.26	.39	.31	.26	.38	.30	.26	.37	.30	.25	.36	.30	.25	.24



C Range: 0 - 360DEG
 C Interval: 15.0DEG
 Test Speed: HIGH
 Temperature: 24.7DEG
 Operators: Lingxin Xie
 Test Date: 2022-07-1

γ Range: 0 - 180DEG
 γ Interval: 1.0DEG
 Test System: EVERFINE GO-2000A_V1 SYSTEM V2.0.291
 Humidity: 54.2%
 Test Distance: 10.149m [K=1.0000]
 Remarks:

Checker: Jianfei Wu

Assessor: Lijian Jiang

WEC AND CCEC

pcc	80%			70%			50%			30%			10%			0
pw	50%	30%	10%	50%	30%	10%	50%	30%	10%	50%	30%	10%	50%	30%	10%	0
pfc	20%			20%			20%			20%			20%			0
RCR	RCR:Room Cavity Ratio						Wall Exitance Coefficients (WEC)									
0.0																
1.0	.312	.178	.056	.305	.174	.055	.291	.167	.053	.279	.161	.052	.267	.155	.050	
2.0	.294	.161	.049	.287	.158	.049	.275	.153	.048	.264	.148	.046	.254	.144	.045	
3.0	.272	.145	.043	.266	.142	.043	.255	.138	.042	.245	.134	.041	.236	.131	.040	
4.0	.250	.130	.038	.245	.128	.038	.236	.125	.037	.227	.122	.037	.219	.119	.036	
5.0	.231	.118	.034	.227	.117	.034	.219	.114	.034	.211	.111	.033	.203	.109	.033	
6.0	.215	.108	.031	.211	.106	.031	.203	.104	.030	.196	.102	.030	.190	.100	.030	
7.0	.200	.099	.028	.196	.098	.028	.189	.096	.028	.183	.094	.027	.177	.092	.027	
8.0	.186	.091	.026	.183	.090	.025	.177	.089	.025	.172	.087	.025	.166	.085	.025	
9.0	.175	.084	.024	.172	.084	.023	.166	.082	.023	.161	.081	.023	.156	.079	.023	
10.0	.164	.079	.022	.162	.078	.022	.157	.077	.022	.152	.076	.021	.148	.074	.021	

pcc	80%			70%			50%			30%			10%			0
pw	50%	30%	10%	50%	30%	10%	50%	30%	10%	50%	30%	10%	50%	30%	10%	0
pfc	20%			20%			20%			20%			20%			0
RCR	RCR:Room Cavity Ratio						Ceiling Cavity Exitance Coefficients (CCEC)									
0.0	.195	.195	.195	.167	.167	.167	.114	.114	.114	.065	.065	.065	.021	.021	.021	
1.0	.185	.161	.139	.158	.138	.119	.108	.095	.083	.062	.055	.048	.020	.018	.016	
2.0	.177	.136	.102	.152	.117	.088	.104	.081	.062	.060	.047	.036	.019	.015	.012	
3.0	.169	.119	.079	.145	.103	.068	.100	.071	.048	.058	.042	.028	.018	.014	.009	
4.0	.162	.106	.063	.139	.091	.054	.095	.064	.038	.055	.037	.023	.018	.012	.007	
5.0	.154	.095	.052	.133	.082	.045	.091	.058	.032	.053	.034	.019	.017	.011	.006	
6.0	.147	.087	.044	.127	.075	.038	.087	.053	.027	.051	.031	.016	.016	.010	.005	
7.0	.140	.080	.038	.121	.069	.033	.083	.049	.023	.048	.029	.014	.016	.009	.005	
8.0	.134	.074	.033	.115	.064	.029	.080	.045	.021	.046	.027	.012	.015	.009	.004	
9.0	.128	.069	.030	.110	.060	.026	.076	.042	.018	.044	.025	.011	.014	.008	.004	
10.0	.122	.065	.027	.105	.056	.024	.073	.040	.017	.043	.023	.010	.014	.008	.003	

C Range: 0 - 360DEG
C Interval: 15.0DEG
Test Speed: HIGH
Temperature:24.7DEG
Operators:Lingxin Xie
Test Date:2022-07-1

γ Range: 0 - 180DEG
γ Interval: 1.0DEG
Test System:EVERFINE GO-2000A_V1 SYSTEM V2.0.291
Humidity:54.2%
Test Distance:10.149m [K=1.0000]
Remarks:

Checker: Jianfei Wu

Assessor: Lijian Jiang

UGR(Unified Glare Rating) Table

ceiling/cavity	0.7	0.7	0.5	0.5	0.3	0.7	0.7	0.5	0.5	0.3
walls	0.5	0.3	0.5	0.3	0.3	0.5	0.3	0.5	0.3	0.3
working plane	0.2	0.2	0.2	0.2	0.2	0.2	0.2	0.2	0.2	0.2
Room dimensions	Viewed crosswise					Viewed endwise				
x = 2H y = 2H	25.7	27.3	26.0	27.5	27.7	26.4	27.9	26.7	28.1	28.3
3H	26.9	28.3	27.2	28.6	28.8	27.9	29.3	28.2	29.5	29.8
4H	27.3	28.6	27.6	28.9	29.2	28.5	29.8	28.8	30.1	30.3
6H	27.4	28.7	27.8	29.0	29.3	28.8	30.1	29.2	30.4	30.7
8H	27.4	28.6	27.8	28.9	29.2	28.9	30.2	29.3	30.5	30.8
12H	27.4	28.6	27.8	28.9	29.2	29.0	30.2	29.3	30.5	30.8
4H 2H	26.3	27.7	26.7	27.9	28.2	26.8	28.2	27.2	28.4	28.7
3H	27.7	28.9	28.0	29.2	29.5	28.5	29.7	28.9	30.0	30.3
4H	28.1	29.2	28.5	29.5	29.9	29.2	30.2	29.6	30.6	30.9
6H	28.3	29.3	28.7	29.6	30.0	29.7	30.6	30.1	31.0	31.3
8H	28.4	29.2	28.8	29.6	30.0	29.8	30.7	30.2	31.1	31.5
12H	28.3	29.2	28.8	29.6	30.0	29.9	30.7	30.3	31.1	31.5
8H 4H	28.3	29.2	28.7	29.6	30.0	29.3	30.2	29.7	30.6	31.0
6H	28.6	29.4	29.1	29.8	30.2	29.9	30.6	30.3	31.0	31.4
8H	28.7	29.3	29.1	29.8	30.2	30.1	30.7	30.5	31.1	31.6
12H	28.7	29.3	29.2	29.7	30.2	30.2	30.7	30.7	31.2	31.7
12H 4H	28.3	29.1	28.8	29.5	30.0	29.3	30.1	29.7	30.5	30.9
6H	28.6	29.3	29.1	29.7	30.2	29.9	30.5	30.3	30.9	31.4
8H	28.7	29.3	29.2	29.7	30.2	30.1	30.6	30.5	31.1	31.6
Variations with the observer position at spacings:										
S = 1.0H	+ 0.2 / - 0.3					+ 0.2 / - 0.2				
1.5H	+ 0.2 / - 0.4					+ 0.2 / - 0.3				
2.0H	+ 0.3 / - 0.4					+ 0.3 / - 0.4				

CIE Pub.117 Corrected 1624 lm Total Lamp Luminous Flux.(8log(F/F0) = 1.7)

C Range: 0 - 360DEG
C Interval: 15.0DEG
Test Speed: HIGH
Temperature:24.7DEG
Operators:Lingxin Xie
Test Date:2022-07-1

Checker: Jianfei Wu

γ Range: 0 - 180DEG
 γ Interval: 1.0DEG
Test System:EVERFINE GO-2000A_V1 SYSTEM V2.0.291
Humidity:54.2%
Test Distance:10.149m [K=1.0000]
Remarks:

Assessor: Lijian Jiang

UTILIZATION FACTORS TABLE

REFLECTANCE										
Ceiling	0.8	0.8	0.8	0.7	0.7	0.7	0.5	0.5	0.5	0
Walls	0.7	0.5	0.3	0.7	0.5	0.3	0.7	0.5	0.3	0
Working plane	0.2	0.2	0.2	0.2	0.2	0.2	0.2	0.2	0.2	0
ROOM INDEX	UTILIZATION FACTORS (PERCENT) $k(RI) \times RCR = 5$									
$k = 0.60$	57	45	38	56	45	38	55	44	38	31
0.80	67	55	48	66	55	48	64	54	47	40
1.00	75	64	57	74	64	57	72	65	56	49
1.25	83	72	65	81	71	64	78	70	63	56
1.50	88	78	71	86	77	70	83	75	69	61
2.00	95	86	79	93	85	79	89	82	77	69
2.50	98	91	84	96	89	84	92	86	82	73
3.00	102	95	89	100	93	88	96	90	86	77
4.00	106	100	95	103	98	94	99	95	91	82
5.00	108	103	99	106	101	98	101	98	95	85
ROOM INDEX	UF (total)									Direct
According to DIN EN 13032-2 2004			Suspended					SHRNOM = 1.25		

C Range: 0 - 360DEG
 C Interval: 15.0DEG
 Test Speed: HIGH
 Temperature: 24.7DEG
 Operators: Lingxin Xie
 Test Date: 2022-07-1

Checker: Jianfei Wu

γ Range: 0 - 180DEG
 γ Interval: 1.0DEG
 Test System: EVERFINE GO-2000A_V1 SYSTEM V2.0.291
 Humidity: 54.2%
 Test Distance: 10.149m [K=1.0000]
 Remarks:

Assessor: Lijian Jiang

ISOCANDELA DIAGRAM

Conical surface Flux(90deg):

854.62 lm

%lum = 52.6%

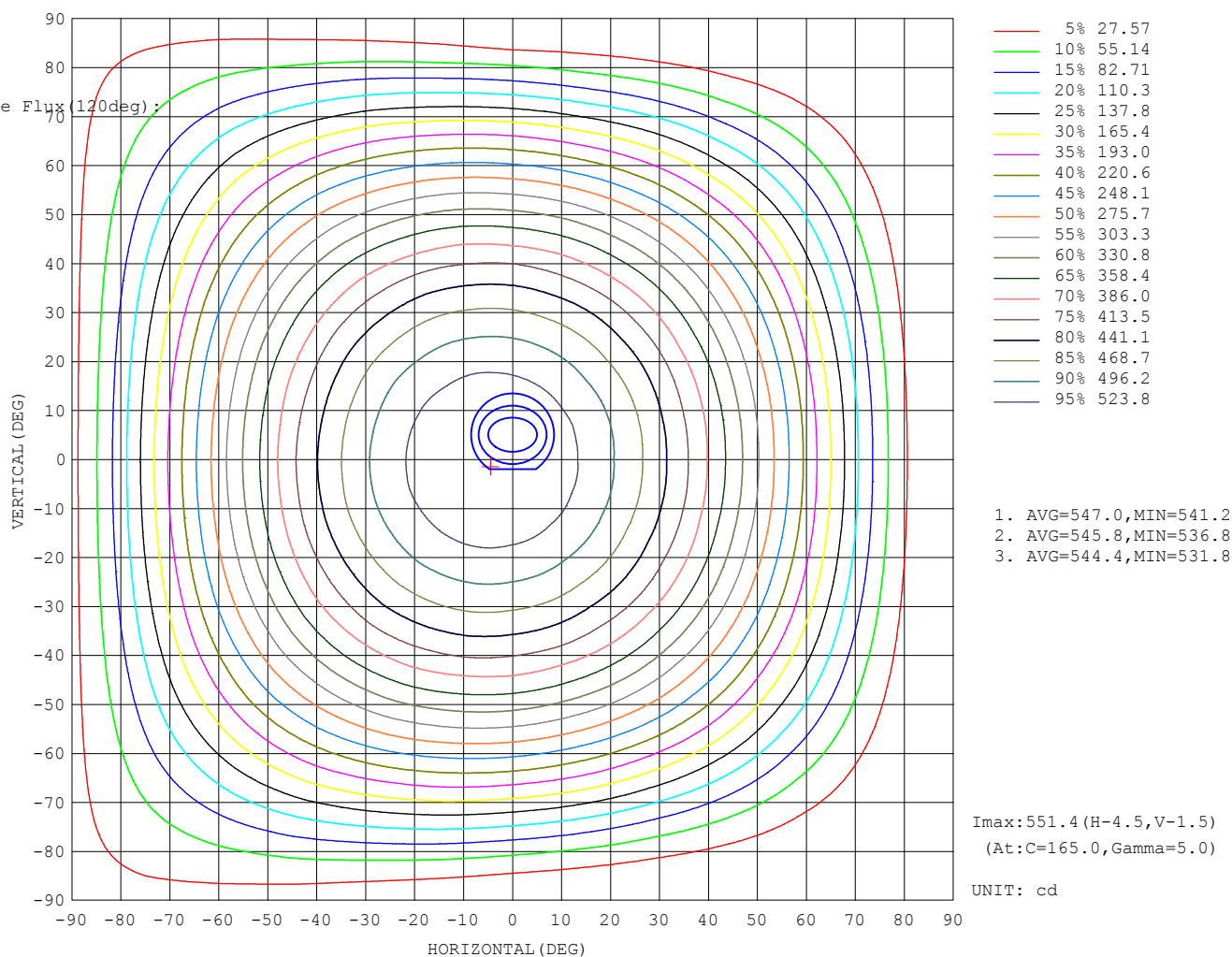
%lamp = 52.6%

Conical surface Flux(120deg):

1264.8 lm

%lum = 77.9%

%lamp = 77.9%



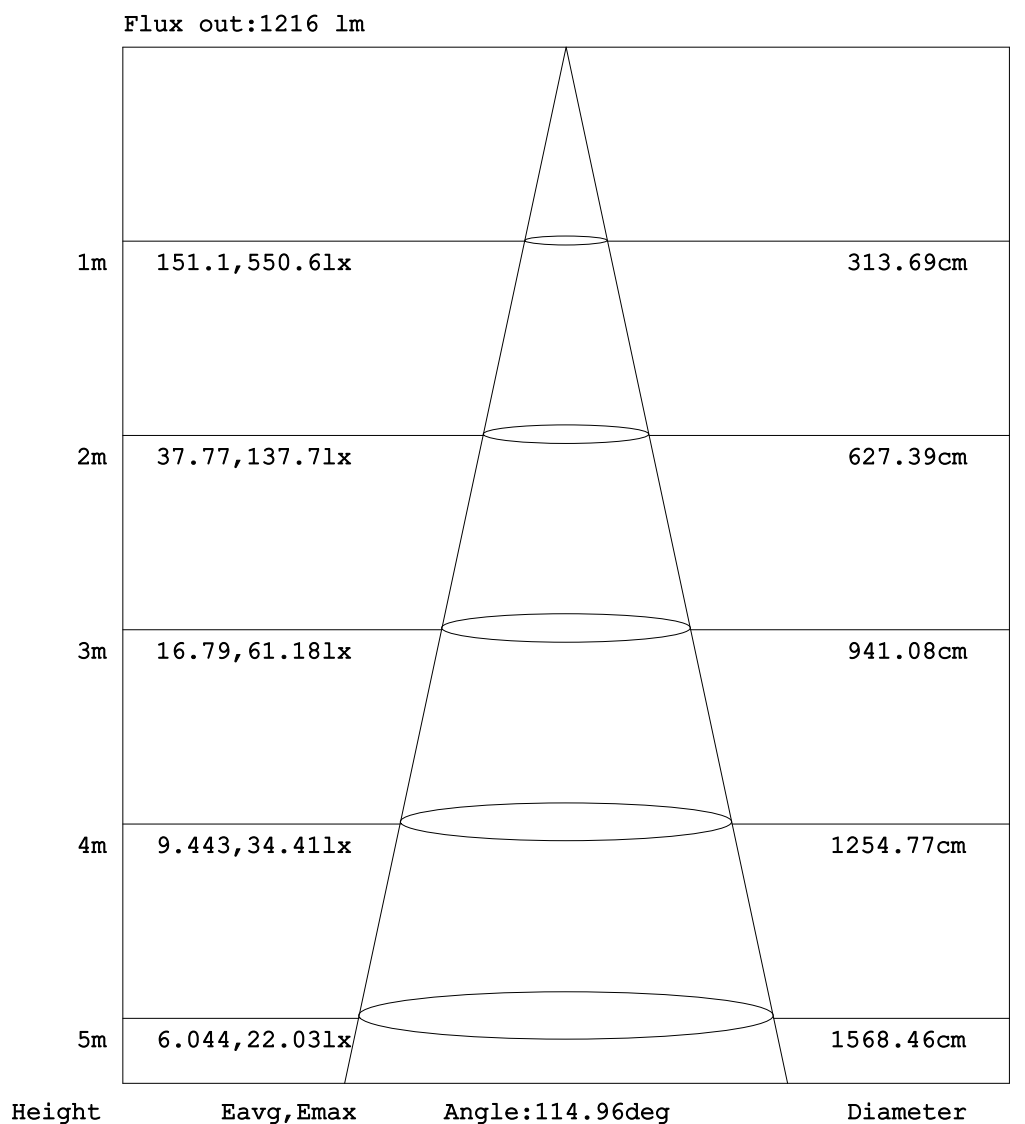
C Range: 0 - 360DEG
C Interval: 15.0DEG
Test Speed: HIGH
Temperature:24.7DEG
Operators:Lingxin Xie
Test Date:2022-07-1

γ Range: 0 - 180DEG
 γ Interval: 1.0DEG
Test System:EVERFINE GO-2000A_V1 SYSTEM V2.0.291
Humidity:54.2%
Test Distance:10.149m [K=1.0000]
Remarks:

Checker: Jianfei Wu

Assessor: Lijian Jiang

AAI Figure



Note:The Curves indicate the illuminated area and the average illumination when the luminaire is at different distance.

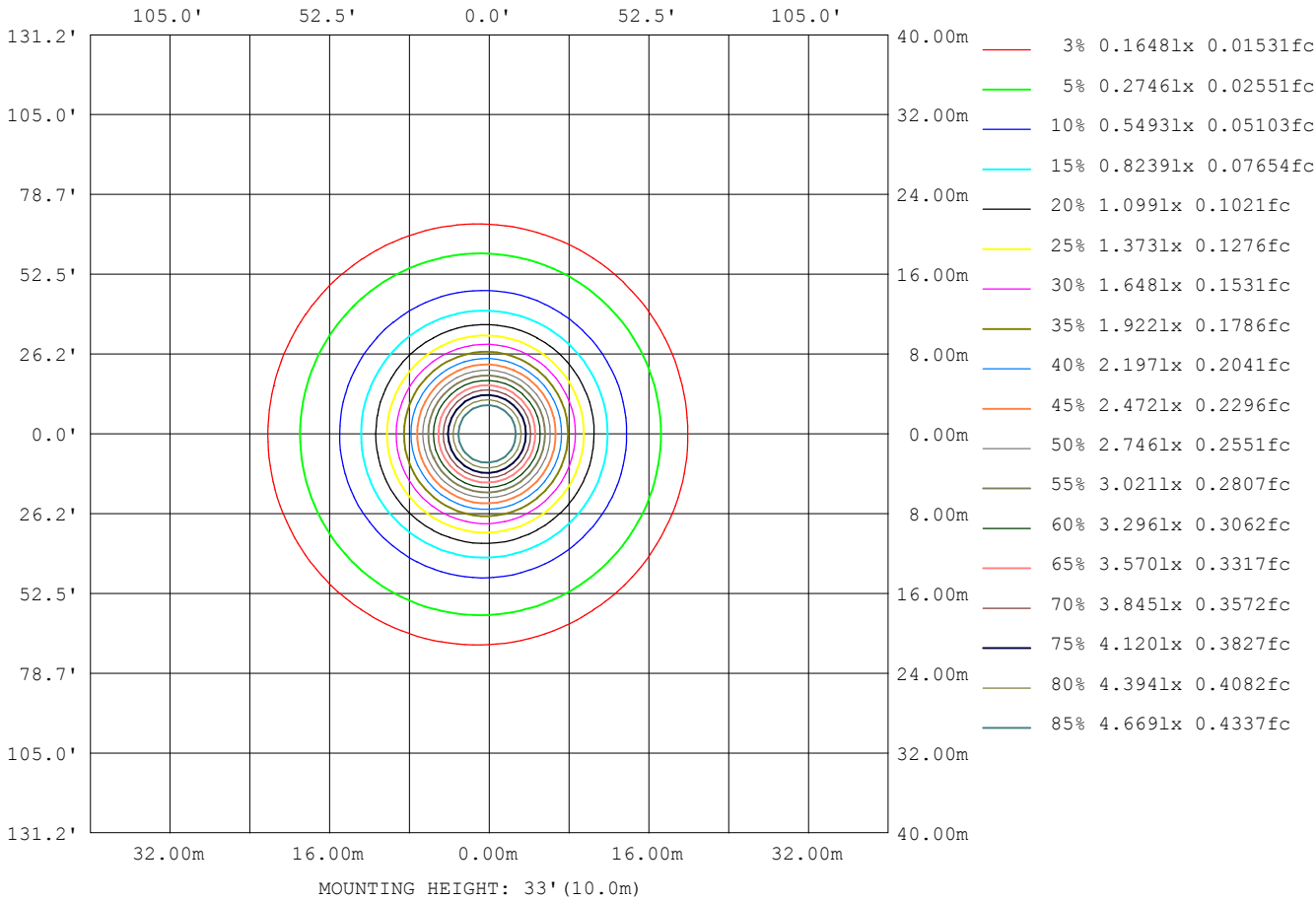
C Range: 0 - 360DEG
C Interval: 15.0DEG
Test Speed: HIGH
Temperature:24.7DEG
Operators:Lingxin Xie
Test Date:2022-07-1

γ Range: 0 - 180DEG
 γ Interval: 1.0DEG
Test System:EVERFINE GO-2000A_V1 SYSTEM V2.0.291
Humidity:54.2%
Test Distance:10.149m [K=1.0000]
Remarks:

Checker: Jianfei Wu

Assessor: Lijian Jiang

ISOLUX DIAGRAM



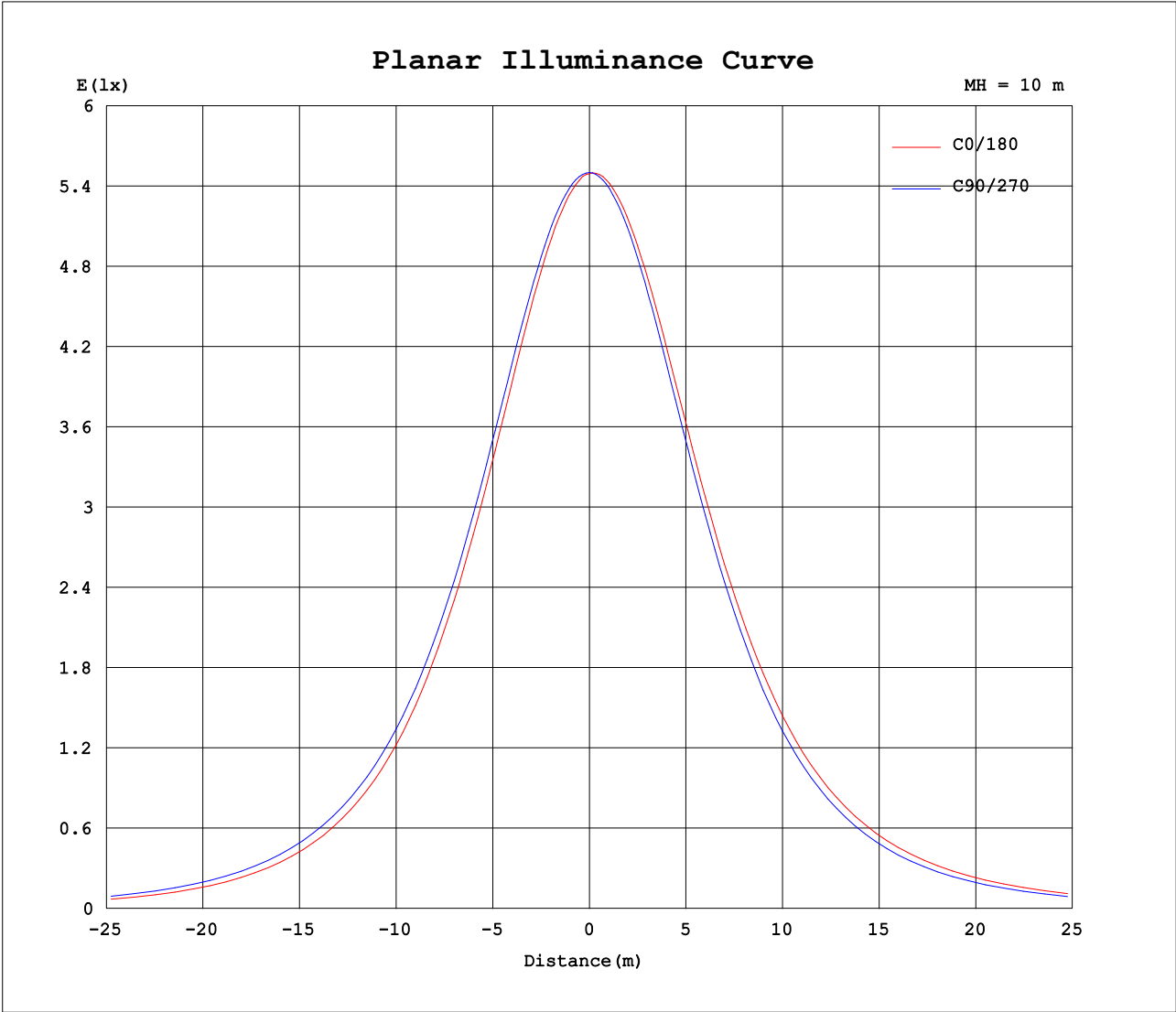
C Range: 0 - 360DEG
C Interval: 15.0DEG
Test Speed: HIGH
Temperature:24.7DEG
Operators:Lingxin Xie
Test Date:2022-07-1

Checker: Jianfei Wu

γ Range: 0 - 180DEG
γ Interval: 1.0DEG
Test System:EVERFINE GO-2000A_V1 SYSTEM V2.0.291
Humidity:54.2%
Test Distance:10.149m [K=1.0000]
Remarks:

Assessor: Lijian Jiang

Planar Illuminance Curve



C Range: 0 - 360DEG
C Interval: 15.0DEG
Test Speed: HIGH
Temperature:24.7DEG
Operators:Lingxin Xie
Test Date:2022-07-1

Checker: Jianfei Wu

γ Range: 0 - 180DEG
 γ Interval: 1.0DEG
Test System:EVERFINE GO-2000A_V1 SYSTEM V2.0.291
Humidity:54.2%
Test Distance:10.149m [K=1.0000]
Remarks:

Assessor: Lijian Jiang

LUMINOUS DISTRIBUTION INTENSITY DATA

Table--1

UNIT: cd

C (DEG) γ (DEG)	0	15	30	45	60	75	90	105	120	135	150	165	180	195	210	225	240	255	270
0	549	549	550	550	550	550	550	550	550	550	550	550	549	549	550	550	550	550	550
5	543	544	544	545	546	547	548	549	550	551	551	551	551	551	551	550	550	549	548
10	533	534	535	536	538	540	542	544	545	547	548	548	548	548	547	546	545	543	541
15	518	519	521	523	525	528	531	534	536	539	541	541	541	540	540	537	536	533	530
20	499	501	502	505	508	512	516	520	523	526	528	530	529	528	528	524	522	518	515
25	477	478	480	484	487	492	496	501	506	509	512	514	513	512	510	507	504	499	495
30	450	451	453	458	462	468	473	479	484	488	491	493	493	492	490	486	482	476	472
35	419	421	423	428	433	440	446	453	458	463	466	469	468	467	465	460	456	450	444
40	384	385	389	393	400	408	414	423	429	435	438	440	440	438	436	431	426	419	413
45	347	347	352	356	364	371	380	387	395	400	405	408	408	406	402	398	391	384	376
50	306	306	311	316	324	332	341	349	358	364	369	371	371	370	365	361	353	346	337
55	261	263	267	273	281	290	300	309	318	324	329	332	332	330	326	321	313	305	295
60	214	216	220	227	235	245	255	265	274	281	287	289	290	288	283	277	269	260	251
65	165	167	171	179	186	197	207	218	228	236	241	245	244	242	238	231	222	213	203
70	116	118	122	129	137	148	158	169	179	188	193	197	197	193	189	181	174	163	154
75	69.6	71.6	74.4	81.0	88.2	98.6	108	120	129	138	144	147	148	145	140	132	124	113	104
80	31.2	32.6	34.6	39.3	44.8	53.3	61.9	72.4	81.0	89.9	94.8	98.6	98.9	95.5	91.2	83.6	75.9	66.1	58.2
85	8.00	8.62	9.32	11.4	14.1	18.7	24.2	32.1	39.1	46.3	50.6	53.8	54.1	51.2	47.4	40.9	34.7	27.2	17.0
90	1.03	1.05	1.07	1.28	1.51	1.52	0.60	6.89	10.9	15.4	18.2	20.4	20.5	18.6	16.2	12.3	8.89	5.20	0.24
95	0.64	0.64	0.62	0.57	0.46	0.38	0.35	0.34	0.85	2.33	3.42	4.23	4.28	3.70	2.86	1.82	0.76	0.30	0.33
100	0.63	0.65	0.61	0.59	0.53	0.55	0.50	0.48	0.41	0.42	0.47	0.62	0.56	0.49	0.38	0.35	0.39	0.40	0.46
105	0.75	0.79	0.73	0.76	0.72	0.73	0.66	0.66	0.62	0.59	0.50	0.54	0.44	0.41	0.48	0.48	0.53	0.54	0.63
110	0.94	0.97	0.94	0.95	0.91	0.91	0.85	0.84	0.75	0.77	0.71	0.69	0.61	0.61	0.63	0.63	0.71	0.73	0.81
115	1.14	1.16	1.13	1.14	1.09	1.10	1.04	1.04	0.94	0.93	0.87	0.88	0.76	0.73	0.79	0.82	0.88	0.92	1.00
120	1.34	1.34	1.31	1.32	1.26	1.30	1.24	1.23	1.14	1.14	1.05	1.07	0.94	0.93	0.98	0.98	1.07	1.09	1.19
125	1.47	1.51	1.47	1.50	1.46	1.48	1.42	1.41	1.32	1.34	1.25	1.25	1.12	1.09	1.16	1.16	1.25	1.26	1.37
130	1.64	1.68	1.62	1.67	1.60	1.64	1.58	1.59	1.48	1.47	1.41	1.43	1.31	1.27	1.35	1.36	1.43	1.45	1.55
135	1.79	1.84	1.79	1.83	1.78	1.81	1.74	1.74	1.67	1.67	1.58	1.59	1.48	1.47	1.52	1.51	1.61	1.61	1.71
140	1.92	1.98	1.91	1.96	1.91	1.93	1.89	1.89	1.80	1.80	1.73	1.75	1.64	1.61	1.69	1.69	1.77	1.78	1.86
145	2.04	2.10	2.04	2.08	2.02	2.07	2.01	2.01	1.94	1.94	1.89	1.90	1.80	1.79	1.83	1.82	1.91	1.90	1.98
150	2.16	2.21	2.16	2.19	2.14	2.18	2.12	2.14	2.06	2.06	2.00	2.04	1.93	1.90	1.96	1.95	2.03	2.02	2.10
155	2.25	2.31	2.25	2.29	2.23	2.27	2.23	2.24	2.17	2.18	2.12	2.16	2.06	2.02	2.08	2.10	2.16	2.13	2.20
160	2.34	2.39	2.34	2.37	2.33	2.36	2.32	2.32	2.27	2.27	2.23	2.27	2.20	2.14	2.20	2.20	2.25	2.23	2.29
165	2.45	2.46	2.43	2.44	2.39	2.42	2.39	2.40	2.37	2.34	2.34	2.37	2.32	2.27	2.32	2.29	2.35	2.34	2.39
170	2.47	2.51	2.47	2.49	2.45	2.48	2.46	2.47	2.45	2.43	2.42	2.44	2.42	2.35	2.41	2.36	2.43	2.42	2.47
175	2.56	2.53	2.50	2.52	2.47	2.52	2.49	2.51	2.51	2.49	2.46	2.51	2.51	2.45	2.49	2.44	2.51	2.46	2.50
180	2.56	2.54	2.54	2.54	2.54	2.53	2.54	2.54	2.53	2.53	2.53	2.56	2.56	2.55	2.54	2.54	2.53	2.56	2.54

C Range: 0 - 360DEG
C Interval: 15.0DEG
Test Speed: HIGH
Temperature:24.7DEG
Operators:Lingxin Xie
Test Date:2022-07-1

γ Range: 0 - 180DEG
γ Interval: 1.0DEG
Test System:EVERFINE GO-2000A_V1 SYSTEM V2.0.291
Humidity:54.2%
Test Distance:10.149m [K=1.0000]
Remarks:

Checker: Jianfei Wu

Assessor: Lijian Jiang

LUMINOUS DISTRIBUTION INTENSITY DATA

Table--2

UNIT: cd

C (DEG) γ (DEG)	285	300	315	330	345													
0	550	550	550	550	550													
5	547	546	545	545	544													
10	539	538	536	535	534													
15	527	525	522	521	519													
20	511	508	504	502	501													
25	490	486	482	480	478													
30	466	461	457	454	451													
35	437	432	426	424	420													
40	405	398	393	388	386													
45	369	361	356	350	348													
50	330	321	315	310	307													
55	287	279	272	266	263													
60	242	233	225	220	216													
65	193	185	176	171	167													
70	143	135	127	122	117													
75	94.3	86.8	79.1	74.9	70.9													
80	49.6	43.7	37.9	34.9	32.2													
85	16.4	13.5	10.7	9.47	8.45													
90	1.54	1.62	1.37	1.25	1.06													
95	0.32	0.40	0.54	0.54	0.61													
100	0.47	0.52	0.52	0.55	0.57													
105	0.63	0.69	0.67	0.71	0.68													
110	0.81	0.87	0.83	0.88	0.83													
115	0.97	1.06	1.01	1.07	1.01													
120	1.17	1.24	1.20	1.25	1.20													
125	1.36	1.42	1.38	1.43	1.37													
130	1.53	1.58	1.56	1.59	1.57													
135	1.69	1.74	1.71	1.75	1.70													
140	1.82	1.88	1.85	1.90	1.85													
145	1.96	1.99	2.00	2.03	2.01													
150	2.09	2.12	2.12	2.13	2.10													
155	2.16	2.21	2.20	2.24	2.23													
160	2.26	2.31	2.27	2.33	2.30													
165	2.34	2.41	2.35	2.41	2.36													
170	2.44	2.47	2.44	2.47	2.46													
175	2.47	2.51	2.47	2.51	2.51													
180	2.54	2.54	2.53	2.53	2.56													

C Range: 0 - 360DEG
 C Interval: 15.0DEG
 Test Speed: HIGH
 Temperature:24.7DEG
 Operators:Lingxin Xie
 Test Date:2022-07-1

Checker: Jianfei Wu

γ Range: 0 - 180DEG
 γ Interval: 1.0DEG
 Test System:EVERFINE GO-2000A_V1 SYSTEM V2.0.291
 Humidity:54.2%
 Test Distance:10.149m [K=1.0000]
 Remarks:

Assessor: Lijian Jiang