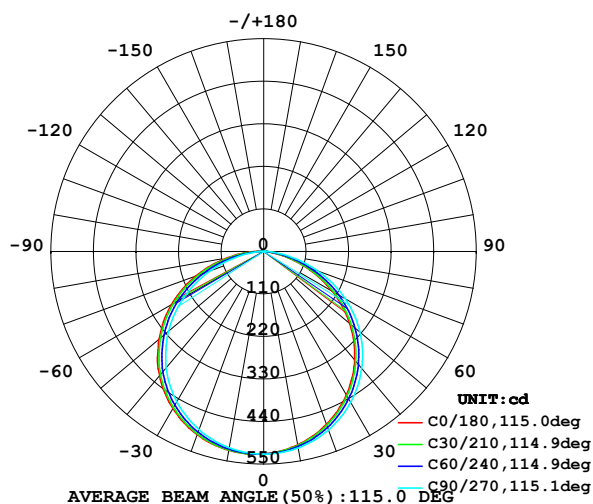


## LUMINAIRE PHOTOMETRIC TEST REPORT

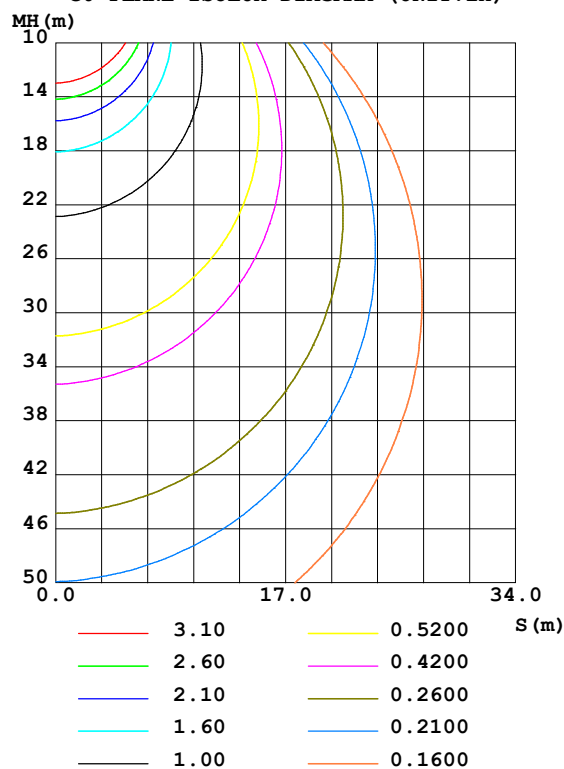
Test:U:24.00V I:0.6199A P:14.88W PF:1.000 Lamp Flux:1546.23x1 lm		
NAME: LED Soft light bar	SUR.:1.0m*0.01m	SERIAL No.:WY-PG-2022052501
MFR.: LEDIA		

DATA OF LAMP		PHOTOMETRIC DATA Eff: 103.93 lm/W			
MODEL	EKF5114HL90	Imax(cd)	525.2	S/MH(C0/180)	1.33
NOMINAL POWER(W)	15	LOR(%)	100.0	S/MH(C90/270)	1.27
RATED VOLTAGE(V)	24	TOTAL FLUX(lm)	1546.2	$\eta$ UP,DN(C0-180)	0.3,49.4
NOMINAL FLUX(lm)	1546.23	CIE CLASS	DIRECT	$\eta$ UP,DN(C180-360)	0.3,50.0
LAMPS INSIDE	1	$\eta$ up(%)	0.6	CIBSE SHR NOM	1.25
TEST VOLTAGE(V)	24	$\eta$ down(%)	99.4	CIBSE SHR MAX	1.35

LUMINOUS INTENSITY DISTRIBUTION DIAGRAM



C0 PLANE ISOLUX DIAGRAM (UNIT:lx)



C Range: 0 - 360DEG  
C Interval: 15.0DEG  
Test Speed: HIGH  
Temperature:24.7DEG  
Operators:Lingxin Xie  
Test Date:2022-05-26

$\gamma$  Range: 0 - 180DEG  
 $\gamma$  Interval: 1.0DEG  
Test System:EVERFINE GO-2000A\_V1 SYSTEM V2.0.291  
Humidity:54.2%  
Test Distance:10.149m [K=1.0000]  
Remarks:

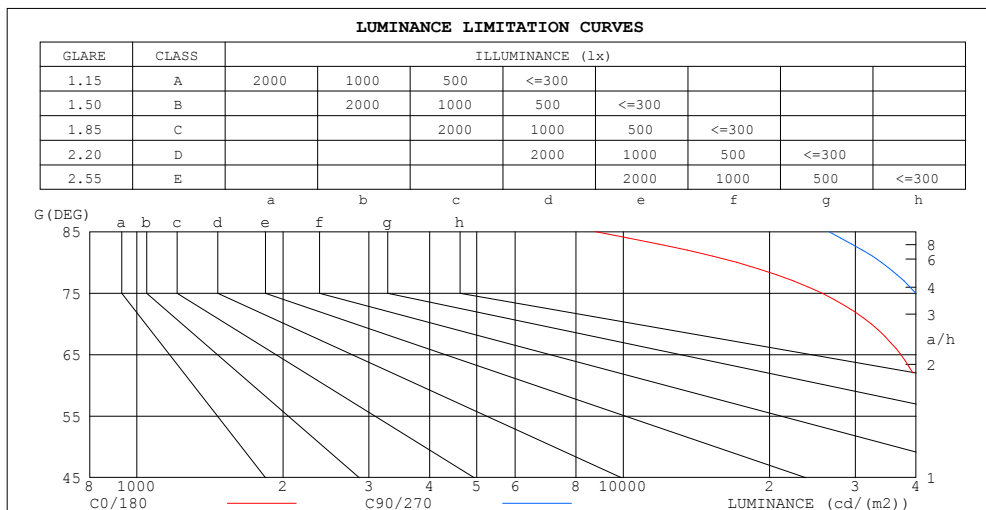
Checker: Jianfei Wu

Assessor: Lijian Jiang

### ZONAL FLUX DIAGRAM AND LUMINANCE LIMITATION CURVES

#### ZONAL FLUX DIAGRAM:

$\gamma$	C0	C45	C90	C135	C180	C225	C270	C315	$\gamma$	$\Phi$ zone	$\Phi$ total	%lum, lamp
10	507.9	510.7	515.9	520.9	522.1	519.9	515.3	510.4	0- 10	49.60	49.60	3.21,3.21
20	475.3	481.3	491.2	500.6	504.0	499.3	490.1	480.1	10- 20	142.6	192.2	12.4,12.4
30	428.3	435.9	450.4	464.9	469.2	462.6	449.1	434.9	20- 30	217.5	409.7	26.5,26.5
40	365.9	374.6	394.7	414.1	419.3	410.5	393.2	374.3	30- 40	264.8	674.5	43.6,43.6
50	291.0	301.2	325.0	346.3	353.3	343.7	321.1	300.2	40- 50	277.3	951.8	61.6,61.6
60	204.0	216.0	242.8	267.9	275.7	264.1	238.6	214.7	50- 60	252.8	1205	77.9,77.9
70	110.6	122.9	150.2	178.8	187.5	172.8	146.4	120.7	60- 70	193.1	1398	90.4,90.4
80	29.71	37.46	58.93	85.59	94.21	79.62	55.45	36.08	70- 80	108.6	1506	97.4,97.4
90	0.9798	1.218	0.5685	14.63	19.54	11.72	0.2305	1.301	80- 90	30.77	1537	99.4,99.4
100	0.6020	0.5579	0.4803	0.4035	0.5311	0.3331	0.4423	0.4930	90-100	2.193	1539	99.6,99.6
110	0.8964	0.9045	0.8056	0.7303	0.5764	0.6018	0.7686	0.7939	100-110	0.6322	1540	99.6,99.6
120	1.273	1.256	1.177	1.088	0.8971	0.9331	1.134	1.139	110-120	0.9232	1541	99.7,99.7
130	1.562	1.595	1.505	1.403	1.243	1.298	1.473	1.485	120-130	1.144	1542	99.7,99.7
140	1.825	1.864	1.799	1.716	1.563	1.607	1.768	1.761	130-140	1.232	1543	99.8,99.8
150	2.055	2.081	2.017	1.960	1.838	1.856	2.005	2.017	140-150	1.168	1544	99.9,99.9
160	2.228	2.261	2.209	2.165	2.095	2.099	2.184	2.166	150-160	0.9608	1545	99.9,99.9
170	2.356	2.376	2.344	2.318	2.306	2.248	2.350	2.325	160-170	0.6374	1546	100,100
180	2.433	2.421	2.421	2.414	2.440	2.421	2.421	2.414	170-180	0.2255	1546	100,100
DEG	LUMINOUS INTENSITY:cd									UNIT:lm		



LUMINANCE cd/(m2)		
G (DEG)	C0/180	C90/270
85	8742	26472
80	17112	33937
75	25614	39887
70	32335	43913
65	37228	46657
60	40801	48564
55	43413	49752
50	45268	50562
45	46676	51155

C Range: 0 - 360DEG  
C Interval: 15.0DEG  
Test Speed: HIGH  
Temperature:24.7DEG  
Operators:Lingxin Xie  
Test Date:2022-05-26

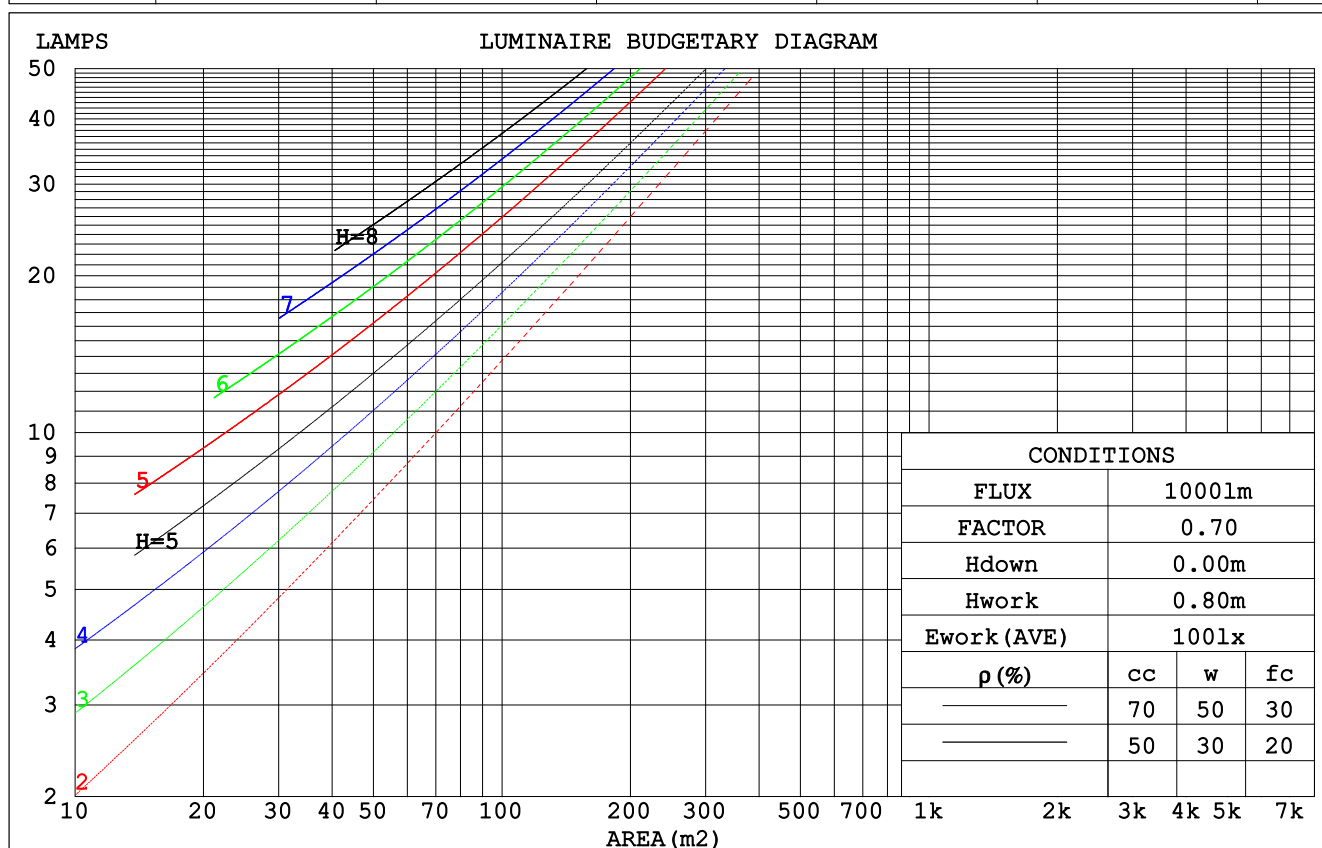
$\gamma$  Range: 0 - 180DEG  
 $\gamma$  Interval: 1.0DEG  
Test System:EVERFINE GO-2000A\_V1 SYSTEM V2.0.291  
Humidity:54.2%  
Test Distance:10.149m [K=1.0000]  
Remarks:

Checker: Jianfei Wu

Assessor: Lijian Jiang

## CU AND LUMINAIRE BUDGETARY ESTIMATE DIAGRAM

pcc	80%			70%			50%			30%			10%			0
pw	50%	30%	10%	50%	30%	10%	50%	30%	10%	50%	30%	10%	50%	30%	10%	0
pfc	20%			20%			20%			20%			20%			0
RCR	RCR:Room Cavity Ratio						Coefficients of Utilization(CU)									
0.0	1.19	1.19	1.19	1.16	1.16	1.16	1.11	1.11	1.11	1.06	1.06	1.06	1.01	1.01	1.01	.99
1.0	1.04	.99	.95	1.01	.97	.94	.97	.94	.91	.93	.90	.88	.89	.87	.85	.83
2.0	.90	.83	.77	.88	.82	.76	.84	.79	.75	.81	.77	.73	.78	.74	.71	.69
3.0	.79	.71	.64	.77	.70	.63	.74	.68	.62	.71	.66	.61	.69	.64	.60	.58
4.0	.70	.61	.54	.68	.60	.54	.66	.59	.53	.63	.57	.52	.61	.56	.51	.49
5.0	.62	.53	.47	.61	.53	.46	.59	.51	.46	.57	.50	.45	.55	.49	.45	.42
6.0	.56	.47	.41	.55	.46	.40	.53	.46	.40	.51	.45	.39	.50	.44	.39	.37
7.0	.51	.42	.36	.50	.41	.36	.48	.41	.35	.47	.40	.35	.45	.39	.35	.33
8.0	.46	.38	.32	.46	.37	.32	.44	.37	.31	.43	.36	.31	.42	.36	.31	.29
9.0	.42	.34	.29	.42	.34	.28	.41	.33	.28	.39	.33	.28	.38	.32	.28	.26
10.0	.39	.31	.26	.39	.31	.26	.38	.30	.26	.37	.30	.25	.36	.30	.25	.24



C Range: 0 - 360DEG  
 C Interval: 15.0DEG  
 Test Speed: HIGH  
 Temperature: 24.7DEG  
 Operators: Lingxin Xie  
 Test Date: 2022-05-26

γ Range: 0 - 180DEG  
 γ Interval: 1.0DEG  
 Test System: EVERFINE GO-2000A\_V1 SYSTEM V2.0.291  
 Humidity: 54.2%  
 Test Distance: 10.149m [K=1.0000]  
 Remarks:

Checker: Jianfei Wu

Assessor: Lijian Jiang

## WEC AND CCEC

pcc	80%			70%			50%			30%			10%			0
pw	50%	30%	10%	50%	30%	10%	50%	30%	10%	50%	30%	10%	50%	30%	10%	0
pfc	20%			20%			20%			20%			20%			0
RCR	RCR:Room Cavity Ratio						Wall Exitance Coefficients (WEC)									
0.0																
1.0	.312	.178	.056	.305	.174	.055	.291	.167	.053	.279	.161	.052	.267	.155	.050	
2.0	.294	.161	.049	.287	.158	.049	.275	.153	.048	.264	.148	.046	.254	.144	.045	
3.0	.272	.145	.043	.266	.142	.043	.255	.138	.042	.245	.134	.041	.236	.131	.040	
4.0	.250	.130	.038	.245	.128	.038	.236	.125	.037	.227	.122	.037	.219	.119	.036	
5.0	.231	.118	.034	.227	.117	.034	.219	.114	.034	.211	.111	.033	.203	.109	.033	
6.0	.215	.108	.031	.211	.106	.031	.203	.104	.030	.196	.102	.030	.190	.100	.030	
7.0	.200	.099	.028	.196	.098	.028	.189	.096	.028	.183	.094	.027	.177	.092	.027	
8.0	.186	.091	.026	.183	.090	.025	.177	.089	.025	.172	.087	.025	.166	.085	.025	
9.0	.175	.084	.024	.172	.084	.023	.166	.082	.023	.161	.081	.023	.156	.079	.023	
10.0	.164	.079	.022	.162	.078	.022	.157	.077	.022	.152	.076	.021	.148	.074	.021	

pcc	80%			70%			50%			30%			10%			0
pw	50%	30%	10%	50%	30%	10%	50%	30%	10%	50%	30%	10%	50%	30%	10%	0
pfc	20%			20%			20%			20%			20%			0
RCR	RCR:Room Cavity Ratio						Ceiling Cavity Exitance Coefficients (CCEC)									
0.0	.195	.195	.195	.167	.167	.167	.114	.114	.114	.065	.065	.065	.021	.021	.021	
1.0	.185	.161	.139	.158	.138	.119	.108	.095	.083	.062	.055	.048	.020	.018	.016	
2.0	.177	.136	.102	.152	.117	.088	.104	.081	.062	.060	.047	.036	.019	.015	.012	
3.0	.169	.119	.079	.145	.103	.068	.100	.071	.048	.058	.042	.028	.018	.014	.009	
4.0	.162	.106	.063	.139	.091	.054	.095	.064	.038	.055	.037	.023	.018	.012	.007	
5.0	.154	.095	.052	.133	.082	.045	.091	.058	.032	.053	.034	.019	.017	.011	.006	
6.0	.147	.087	.044	.127	.075	.038	.087	.053	.027	.051	.031	.016	.016	.010	.005	
7.0	.140	.080	.038	.121	.069	.033	.083	.049	.023	.048	.029	.014	.016	.009	.005	
8.0	.134	.074	.033	.115	.064	.029	.080	.045	.021	.046	.027	.012	.015	.009	.004	
9.0	.128	.069	.030	.110	.060	.026	.076	.042	.018	.044	.025	.011	.014	.008	.004	
10.0	.122	.065	.027	.105	.056	.024	.073	.040	.017	.043	.023	.010	.014	.008	.003	

C Range: 0 - 360DEG  
 C Interval: 15.0DEG  
 Test Speed: HIGH  
 Temperature:24.7DEG  
 Operators:Lingxin Xie  
 Test Date:2022-05-26

γ Range: 0 - 180DEG  
 γ Interval: 1.0DEG  
 Test System:EVERFINE GO-2000A\_V1 SYSTEM V2.0.291  
 Humidity:54.2%  
 Test Distance:10.149m [K=1.0000]  
 Remarks:

Checker: Jianfei Wu

Assessor: Lijian Jiang

UGR(Unified Glare Rating) Table

ceiling/cavity	0.7	0.7	0.5	0.5	0.3	0.7	0.7	0.5	0.5	0.3
walls	0.5	0.3	0.5	0.3	0.3	0.5	0.3	0.5	0.3	0.3
working plane	0.2	0.2	0.2	0.2	0.2	0.2	0.2	0.2	0.2	0.2
Room dimensions	Viewed crosswise					Viewed endwise				
x = 2H y = 2H	25.6	27.1	25.8	27.3	27.5	26.2	27.7	26.5	27.9	28.2
3H	26.8	28.2	27.1	28.4	28.7	27.7	29.1	28.0	29.4	29.6
4H	27.1	28.5	27.4	28.7	29.0	28.3	29.6	28.6	29.9	30.2
6H	27.3	28.5	27.6	28.8	29.1	28.7	29.9	29.0	30.2	30.5
8H	27.3	28.5	27.6	28.8	29.1	28.8	30.0	29.1	30.3	30.6
12H	27.2	28.4	27.6	28.7	29.0	28.8	30.0	29.2	30.3	30.6
4H 2H	26.2	27.5	26.5	27.8	28.0	26.7	28.0	27.0	28.3	28.5
3H	27.5	28.7	27.9	29.0	29.3	28.3	29.5	28.7	29.8	30.1
4H	28.0	29.0	28.3	29.4	29.7	29.0	30.1	29.4	30.4	30.8
6H	28.2	29.1	28.6	29.5	29.9	29.5	30.4	29.9	30.8	31.2
8H	28.2	29.1	28.6	29.5	29.9	29.6	30.5	30.0	30.9	31.3
12H	28.2	29.0	28.6	29.4	29.8	29.7	30.5	30.1	30.9	31.3
8H 4H	28.2	29.0	28.6	29.4	29.8	29.1	30.0	29.5	30.4	30.8
6H	28.5	29.2	28.9	29.6	30.0	29.7	30.4	30.1	30.8	31.3
8H	28.5	29.2	29.0	29.6	30.1	29.9	30.5	30.3	31.0	31.4
12H	28.5	29.1	29.0	29.5	30.0	30.0	30.6	30.5	31.0	31.5
12H 4H	28.2	29.0	28.6	29.4	29.8	29.1	29.9	29.5	30.3	30.7
6H	28.5	29.1	28.9	29.6	30.0	29.7	30.3	30.2	30.8	31.2
8H	28.5	29.1	29.0	29.6	30.1	29.9	30.5	30.4	30.9	31.4
Variations with the observer position at spacings:										
S = 1.0H	+ 0.2 / - 0.3					+ 0.2 / - 0.2				
1.5H	+ 0.2 / - 0.4					+ 0.2 / - 0.3				
2.0H	+ 0.3 / - 0.4					+ 0.3 / - 0.4				

CIE Pub.117 Corrected 1546 lm Total Lamp Luminous Flux.(8log(F/F0) = 1.5)

C Range: 0 - 360DEG  
 C Interval: 15.0DEG  
 Test Speed: HIGH  
 Temperature:24.7DEG  
 Operators:Lingxin Xie  
 Test Date:2022-05-26

Checker: Jianfei Wu

γ Range: 0 - 180DEG  
 γ Interval: 1.0DEG  
 Test System:EVERFINE GO-2000A\_V1 SYSTEM V2.0.291  
 Humidity:54.2%  
 Test Distance:10.149m [K=1.0000]  
 Remarks:

Assessor: Lijian Jiang

## UTILIZATION FACTORS TABLE

REFLECTANCE										
Ceiling	0.8	0.8	0.8	0.7	0.7	0.7	0.5	0.5	0.5	0
Walls	0.7	0.5	0.3	0.7	0.5	0.3	0.7	0.5	0.3	0
Working plane	0.2	0.2	0.2	0.2	0.2	0.2	0.2	0.2	0.2	0
ROOM INDEX	UTILIZATION FACTORS (PERCENT) $k(RI) \times RCR = 5$									
$k = 0.60$	57	45	38	56	45	38	55	44	38	31
0.80	67	55	48	66	55	48	64	54	47	40
1.00	75	64	57	74	64	57	72	65	56	49
1.25	83	72	65	81	71	64	78	70	63	56
1.50	88	78	71	86	77	70	83	75	69	61
2.00	95	86	79	93	85	79	89	82	77	69
2.50	98	91	84	96	89	84	92	86	82	73
3.00	102	95	89	100	93	88	96	90	86	77
4.00	106	100	95	103	98	94	99	95	91	82
5.00	108	103	99	106	101	98	101	98	95	85
ROOM INDEX	UF (total)									Direct
According to DIN EN 13032-2 2004			Suspended					SHRNOM = 1.25		

C Range: 0 - 360DEG  
 C Interval: 15.0DEG  
 Test Speed: HIGH  
 Temperature: 24.7DEG  
 Operators: Lingxin Xie  
 Test Date: 2022-05-26

Checker: Jianfei Wu

$\gamma$  Range: 0 - 180DEG  
 $\gamma$  Interval: 1.0DEG  
 Test System: EVERFINE GO-2000A\_V1 SYSTEM V2.0.291  
 Humidity: 54.2%  
 Test Distance: 10.149m [K=1.0000]  
 Remarks:

Assessor: Lijian Jiang

## ISOCANDELA DIAGRAM

Conical surface Flux(90deg):

813.92 lm

%lum = 52.6%

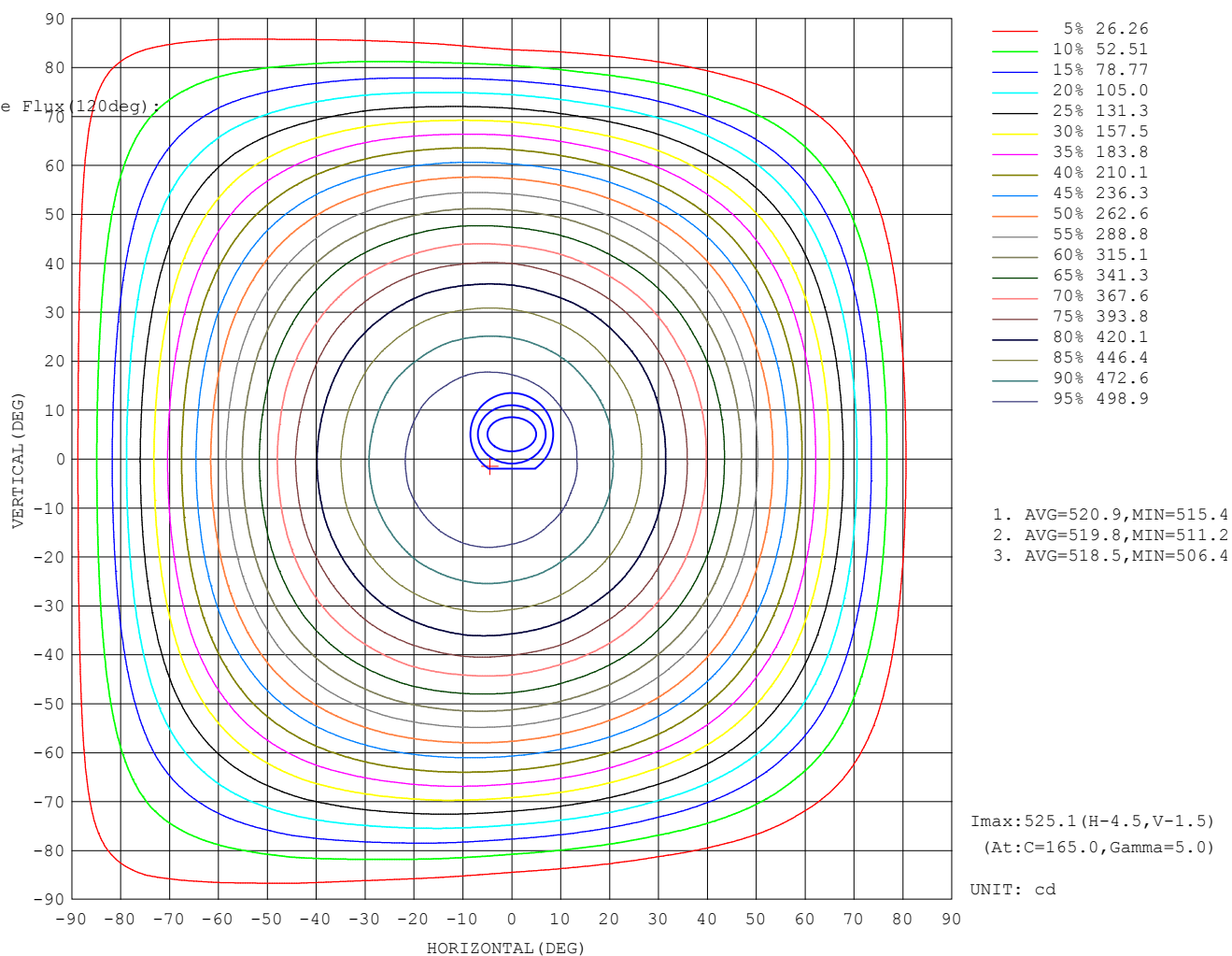
%lamp = 52.6%

Conical surface Flux(120deg):

1204.6 lm

%lum = 77.9%

%lamp = 77.9%



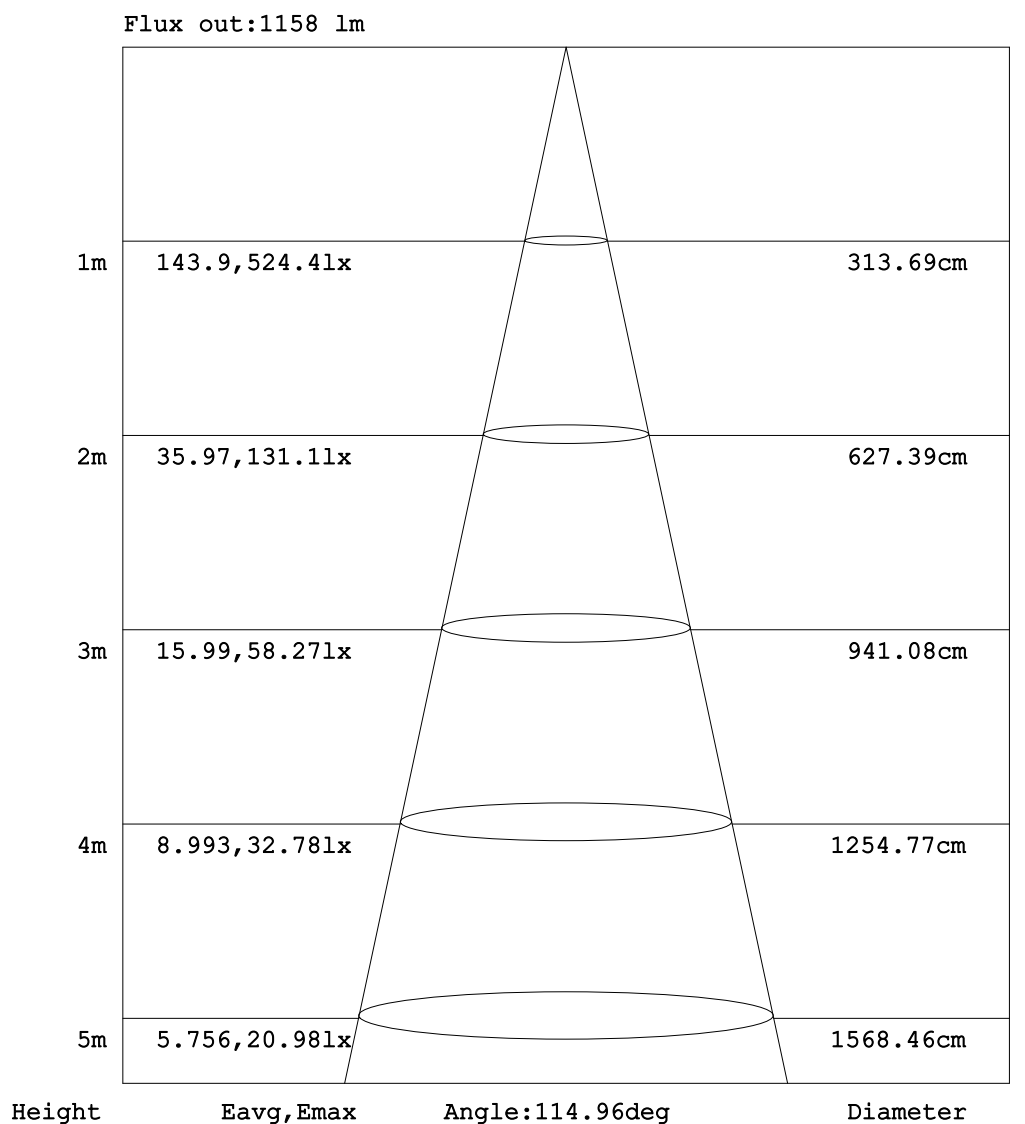
C Range: 0 - 360DEG  
C Interval: 15.0DEG  
Test Speed: HIGH  
Temperature:24.7DEG  
Operators:Lingxin Xie  
Test Date:2022-05-26

$\gamma$  Range: 0 - 180DEG  
 $\gamma$  Interval: 1.0DEG  
Test System:EVERFINE GO-2000A\_V1 SYSTEM V2.0.291  
Humidity:54.2%  
Test Distance:10.149m [K=1.0000]  
Remarks:

Checker: Jianfei Wu

Assessor: Lijian Jiang

## AAI Figure



Note: The Curves indicate the illuminated area and the average illumination when the luminaire is at different distance.

C Range: 0 - 360DEG  
C Interval: 15.0DEG  
Test Speed: HIGH  
Temperature: 24.7DEG  
Operators: Lingxin Xie  
Test Date: 2022-05-26

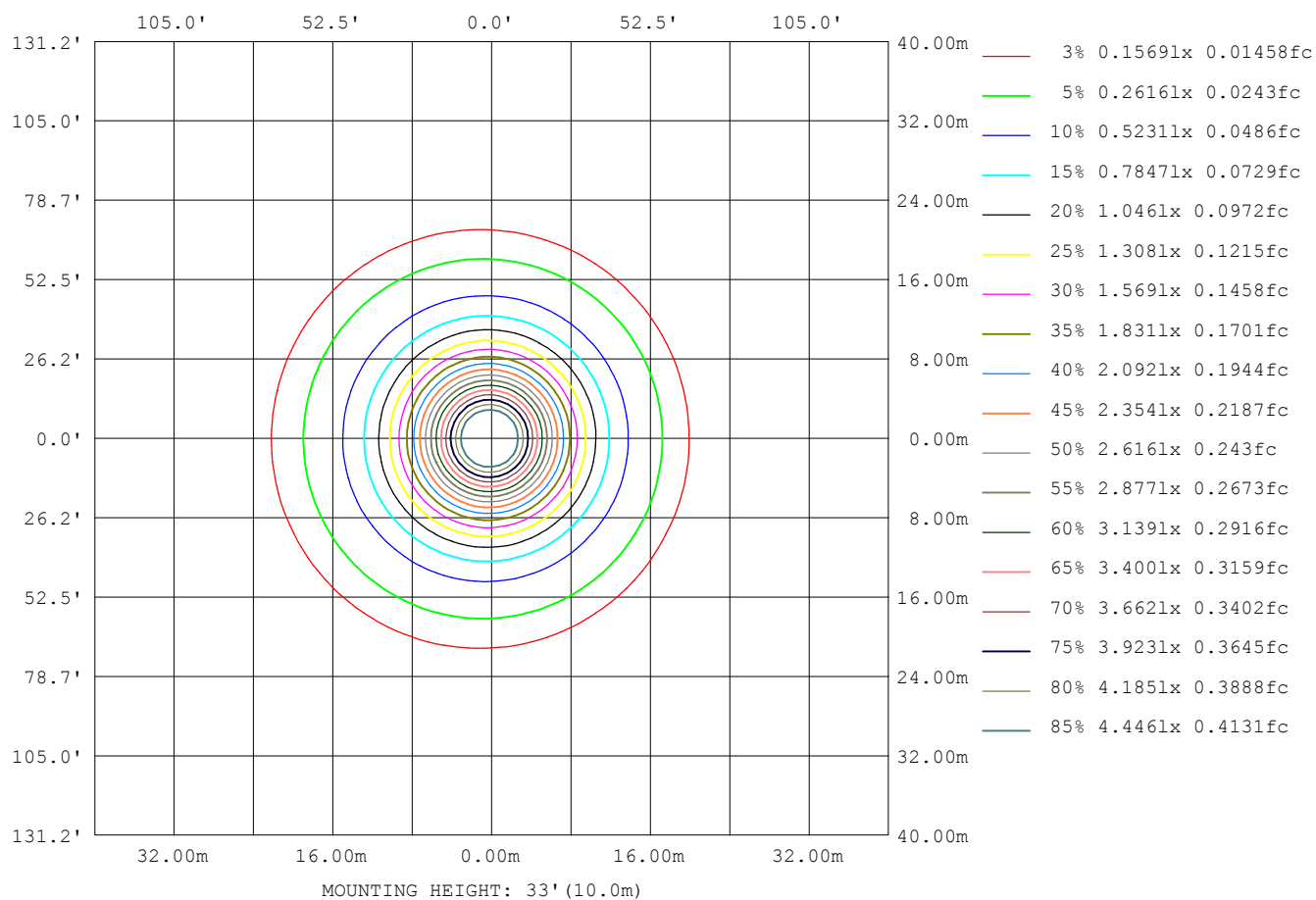
$\gamma$  Range: 0 - 180DEG  
 $\gamma$  Interval: 1.0DEG  
Test System: EVERFINE GO-2000A\_V1 SYSTEM V2.0.291  
Humidity: 54.2%  
Test Distance: 10.149m [K=1.0000]  
Remarks:

Checker: Jianfei Wu

Assessor: Lijian Jiang



## ISOLUX DIAGRAM



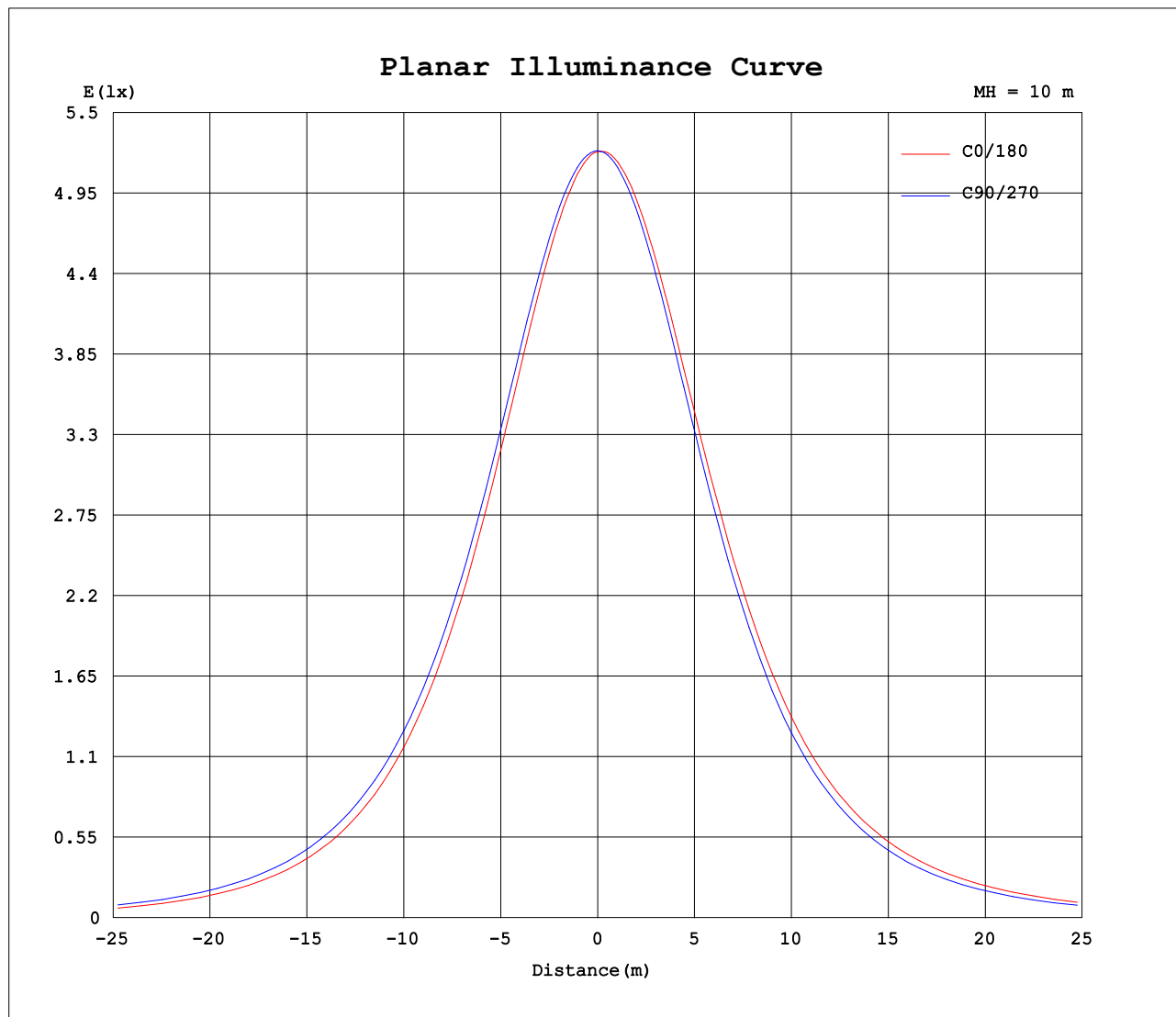
C Range: 0 - 360DEG  
C Interval: 15.0DEG  
Test Speed: HIGH  
Temperature: 24.7DEG  
Operators: Lingxin Xie  
Test Date: 2022-05-26

Checker: Jianfei Wu

$\gamma$  Range: 0 - 180DEG  
 $\gamma$  Interval: 1.0DEG  
Test System: EVERFINE GO-2000A\_V1 SYSTEM V2.0.291  
Humidity: 54.2%  
Test Distance: 10.149m [K=1.0000]  
Remarks:

Assessor: Lijian Jiang

## Planar Illuminance Curve



C Range: 0 - 360DEG  
C Interval: 15.0DEG  
Test Speed: HIGH  
Temperature: 24.7DEG  
Operators: Lingxin Xie  
Test Date: 2022-05-26

Checker: Jianfei Wu

$\gamma$  Range: 0 - 180DEG  
 $\gamma$  Interval: 1.0DEG  
Test System: EVERFINE GO-2000A\_V1 SYSTEM V2.0.291  
Humidity: 54.2%  
Test Distance: 10.149m [K=1.0000]  
Remarks:

Assessor: Lijian Jiang

## LUMINOUS DISTRIBUTION INTENSITY DATA

Table--1

UNIT: cd

C (DEG) γ (DEG)	0	15	30	45	60	75	90	105	120	135	150	165	180	195	210	225	240	255	270
0	523	523	524	524	524	524	524	524	524	524	524	524	523	523	524	524	524	524	524
5	518	518	519	519	520	521	522	523	524	524	525	525	525	525	525	524	524	523	522
10	508	508	509	511	512	514	516	518	519	521	522	522	522	521	521	520	519	517	515
15	494	495	496	498	500	503	505	508	511	513	515	515	515	514	514	512	510	507	505
20	475	477	478	481	484	488	491	495	498	501	503	504	504	503	502	499	497	493	490
25	454	455	457	460	464	469	473	477	482	485	487	489	488	488	486	483	480	476	471
30	428	430	432	436	440	446	450	456	461	465	467	469	469	468	467	463	459	454	449
35	399	401	403	408	412	419	424	431	436	441	444	446	446	445	443	438	435	428	423
40	366	367	370	375	381	388	395	402	408	414	417	419	419	417	415	411	406	399	393
45	330	331	335	339	346	353	362	368	376	381	386	388	388	386	383	379	372	366	358
50	291	292	296	301	309	316	325	333	341	346	351	353	353	352	348	344	337	330	321
55	249	250	254	260	268	276	285	294	303	309	314	316	316	315	311	305	298	290	281
60	204	206	210	216	224	233	243	252	261	268	273	275	276	274	270	264	256	248	239
65	157	160	163	170	177	188	197	208	217	225	230	233	233	231	226	220	212	203	193
70	111	113	116	123	130	141	150	161	170	179	183	187	187	184	180	173	165	155	146
75	66.3	68.2	70.9	77.2	84.0	93.9	103	114	123	132	137	140	141	138	133	126	118	108	99.4
80	29.7	31.1	32.9	37.5	42.7	50.8	58.9	69.0	77.2	85.6	90.3	93.9	94.2	91.0	86.9	79.6	72.3	63.0	55.5
85	7.62	8.21	8.88	10.9	13.4	17.8	23.1	30.6	37.2	44.1	48.2	51.3	51.5	48.7	45.1	39.0	33.1	25.9	16.2
90	0.98	1.00	1.02	1.22	1.44	1.45	0.57	6.56	10.4	14.6	17.3	19.4	19.5	17.7	15.4	11.7	8.46	4.95	0.23
95	0.61	0.61	0.59	0.55	0.44	0.36	0.33	0.32	0.81	2.22	3.26	4.03	4.07	3.52	2.72	1.73	0.72	0.28	0.31
100	0.60	0.62	0.58	0.56	0.51	0.52	0.48	0.46	0.39	0.40	0.44	0.59	0.53	0.47	0.36	0.33	0.37	0.38	0.44
105	0.72	0.76	0.70	0.72	0.69	0.69	0.63	0.63	0.59	0.56	0.48	0.52	0.42	0.39	0.46	0.45	0.51	0.51	0.60
110	0.90	0.92	0.90	0.90	0.86	0.86	0.81	0.80	0.71	0.73	0.68	0.66	0.58	0.58	0.60	0.60	0.67	0.69	0.77
115	1.09	1.11	1.08	1.08	1.04	1.05	0.99	0.99	0.90	0.88	0.82	0.83	0.72	0.69	0.76	0.78	0.84	0.88	0.95
120	1.27	1.27	1.25	1.26	1.20	1.24	1.18	1.17	1.09	1.09	1.00	1.02	0.90	0.88	0.94	0.93	1.02	1.04	1.13
125	1.40	1.44	1.40	1.43	1.39	1.41	1.35	1.35	1.26	1.27	1.19	1.19	1.06	1.04	1.11	1.10	1.19	1.20	1.31
130	1.56	1.60	1.54	1.59	1.52	1.56	1.50	1.51	1.41	1.40	1.34	1.36	1.24	1.21	1.28	1.30	1.37	1.38	1.47
135	1.70	1.75	1.71	1.74	1.70	1.72	1.66	1.65	1.59	1.59	1.50	1.52	1.41	1.40	1.45	1.43	1.54	1.54	1.63
140	1.83	1.88	1.82	1.86	1.82	1.84	1.80	1.80	1.71	1.72	1.65	1.67	1.56	1.53	1.61	1.61	1.68	1.70	1.77
145	1.95	2.00	1.95	1.99	1.93	1.97	1.91	1.92	1.84	1.85	1.80	1.81	1.72	1.70	1.74	1.73	1.82	1.81	1.89
150	2.06	2.11	2.06	2.08	2.04	2.08	2.02	2.04	1.97	1.96	1.91	1.94	1.84	1.81	1.86	1.86	1.93	1.92	2.00
155	2.14	2.20	2.14	2.18	2.13	2.16	2.13	2.13	2.07	2.08	2.02	2.06	1.97	1.92	1.98	2.00	2.06	2.03	2.09
160	2.23	2.27	2.23	2.26	2.22	2.25	2.21	2.21	2.16	2.16	2.13	2.16	2.09	2.04	2.09	2.10	2.15	2.13	2.18
165	2.34	2.34	2.32	2.32	2.28	2.31	2.27	2.29	2.26	2.23	2.23	2.25	2.21	2.16	2.21	2.18	2.24	2.23	2.27
170	2.36	2.39	2.35	2.38	2.33	2.36	2.34	2.36	2.33	2.32	2.30	2.32	2.31	2.24	2.30	2.25	2.32	2.31	2.35
175	2.43	2.41	2.38	2.40	2.36	2.40	2.38	2.39	2.39	2.38	2.34	2.39	2.39	2.34	2.37	2.32	2.39	2.34	2.38
180	2.43	2.42	2.42	2.42	2.42	2.41	2.42	2.42	2.41	2.41	2.41	2.43	2.44	2.43	2.42	2.42	2.41	2.43	2.42

C Range: 0 - 360DEG  
C Interval: 15.0DEG  
Test Speed: HIGH  
Temperature:24.7DEG  
Operators:Lingxin Xie  
Test Date:2022-05-26

γ Range: 0 - 180DEG  
γ Interval: 1.0DEG  
Test System:EVERFINE GO-2000A\_V1 SYSTEM V2.0.291  
Humidity:54.2%  
Test Distance:10.149m [K=1.0000]  
Remarks:

Checker: Jianfei Wu

Assessor: Lijian Jiang

## LUMINOUS DISTRIBUTION INTENSITY DATA

Table--2

UNIT: cd

C (DEG) γ (DEG)	285	300	315	330	345													
0	524	524	524	524	524													
5	521	520	519	519	518													
10	514	512	510	509	508													
15	502	500	497	496	494													
20	486	483	480	478	477													
25	467	463	459	457	455													
30	444	439	435	432	430													
35	417	412	406	403	400													
40	386	379	374	369	368													
45	352	344	339	334	331													
50	314	306	300	295	292													
55	274	265	259	253	250													
60	230	222	215	209	206													
65	184	176	168	163	159													
70	136	129	121	116	112													
75	89.8	82.7	75.3	71.3	67.5													
80	47.3	41.6	36.1	33.2	30.6													
85	15.6	12.9	10.2	9.02	8.05													
90	1.47	1.55	1.30	1.19	1.01													
95	0.30	0.38	0.51	0.51	0.58													
100	0.45	0.49	0.49	0.52	0.54													
105	0.60	0.65	0.63	0.67	0.65													
110	0.77	0.83	0.79	0.84	0.79													
115	0.92	1.01	0.97	1.02	0.97													
120	1.11	1.18	1.14	1.19	1.14													
125	1.30	1.35	1.31	1.36	1.31													
130	1.46	1.51	1.48	1.52	1.49													
135	1.61	1.66	1.63	1.67	1.62													
140	1.73	1.79	1.76	1.81	1.77													
145	1.86	1.90	1.90	1.93	1.91													
150	1.99	2.02	2.02	2.03	2.00													
155	2.06	2.11	2.09	2.13	2.12													
160	2.15	2.20	2.17	2.22	2.19													
165	2.23	2.29	2.24	2.30	2.25													
170	2.32	2.35	2.32	2.36	2.34													
175	2.36	2.39	2.35	2.40	2.39													
180	2.42	2.42	2.41	2.41	2.43													

C Range: 0 - 360DEG  
C Interval: 15.0DEG  
Test Speed: HIGH  
Temperature:24.7DEG  
Operators:Lingxin Xie  
Test Date:2022-05-26

Checker: Jianfei Wu

γ Range: 0 - 180DEG  
γ Interval: 1.0DEG  
Test System:EVERFINE GO-2000A\_V1 SYSTEM V2.0.291  
Humidity:54.2%  
Test Distance:10.149m [K=1.0000]  
Remarks:

Assessor: Lijian Jiang