

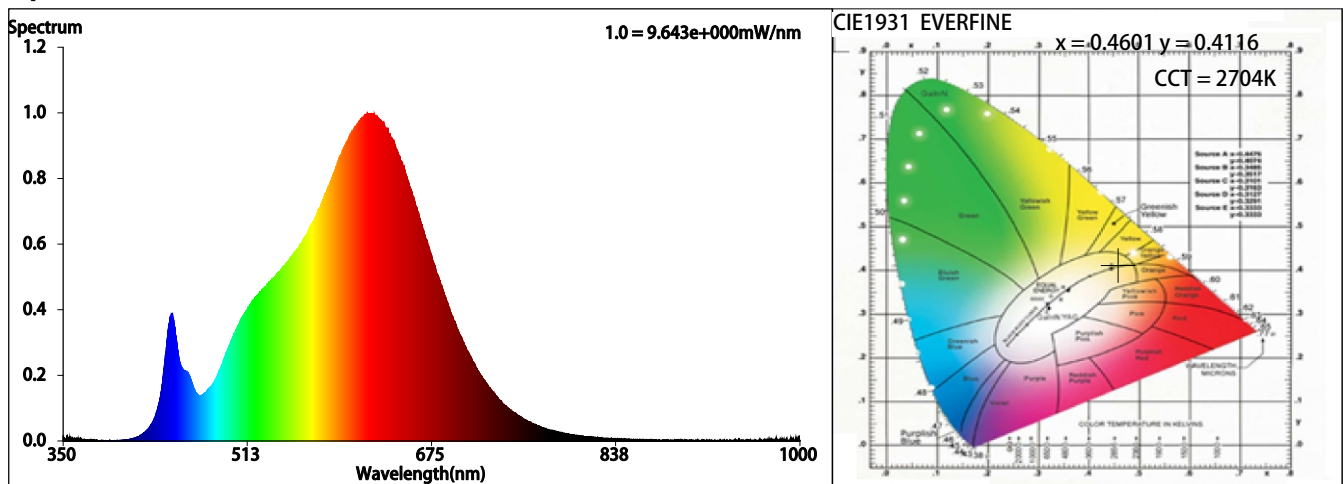
Spectrum Test Report

Sample :	Date : 2022-01-02 14:31:13
Specification :	Sam. Status :
Sample No. : 14	Instrument : HAAS-2000(EVERFINE)
Manufacturer :	Test by : QC
	Assessor : damin

Test Condition

Temperature : 25.3Deg	RH : 55.0%
WL Range : 350nm-1000nm	IP : 49847 (76%)
Test Mode : Accuracy Test	T : 445 ms
	Sensitivity : High

Spectrum



Colorimetric Parameters

Chromaticity Coordinate: $x = 0.4601$ $y = 0.4116$ / $u' = 0.2622$ $v' = 0.5278$ ($duv=3.55e-04$)

CCT= 2704K Prcp WL: $L_d=584.1nm$ Purity=61.7%

Peak WL: $L_p=618nm$ FWHM: $=144.9nm$ Ratio:R=26.3% G=71.4% B=2.3%

Render Index: $R_a = 92.3$ TM30:Rf=91 Rg=100

R1 =92 R2 =96 R3 =99 R4 =93 R5 =92 R6 =96 R7 =91

R8 =79 R9 =54 R10=90 R11=95 R12=88 R13=93 R14=99 R15=87

LEVEL:OUT WHITE:ANSI_2700K

Photometric & Radiometric Parameters

Flux = 441.68 lm Eff. : 81.17 lm/W $F_e = 1.5596 W$

Electrical parameters

V = 12.00 V I = 0.4535 A P = 5.441 W PF = 1.000

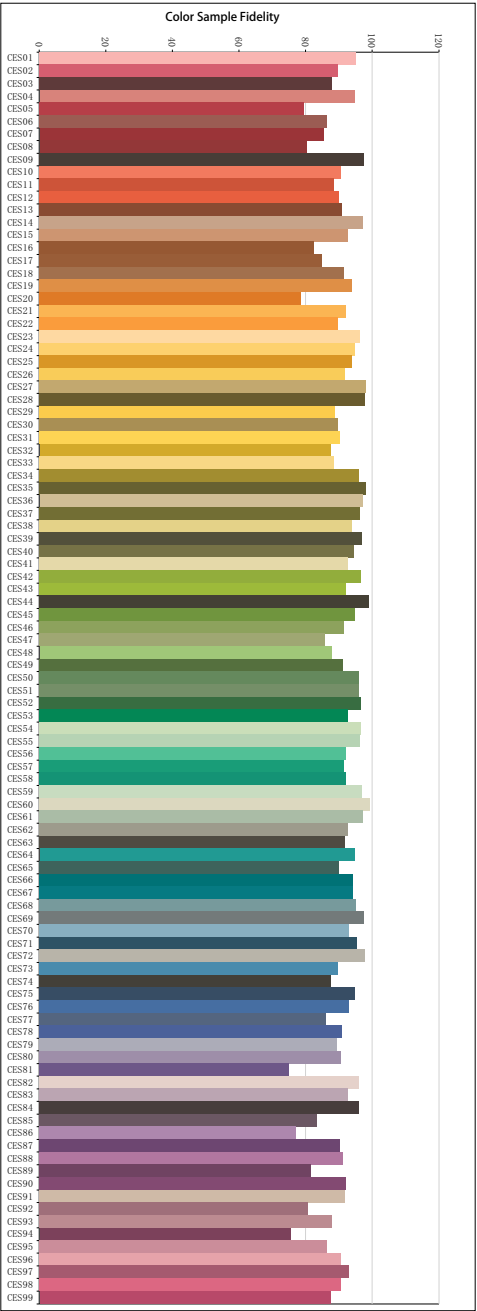
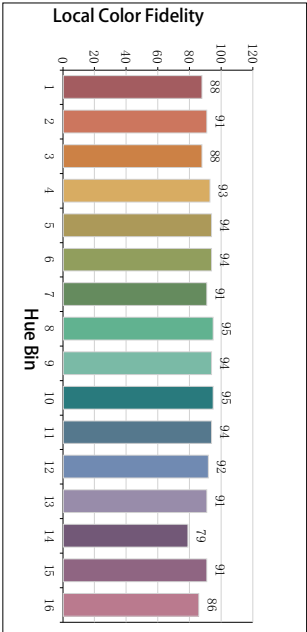
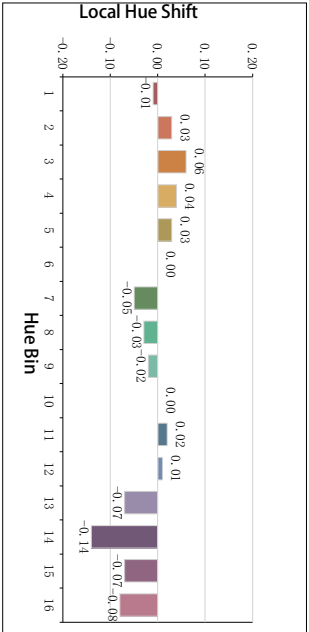
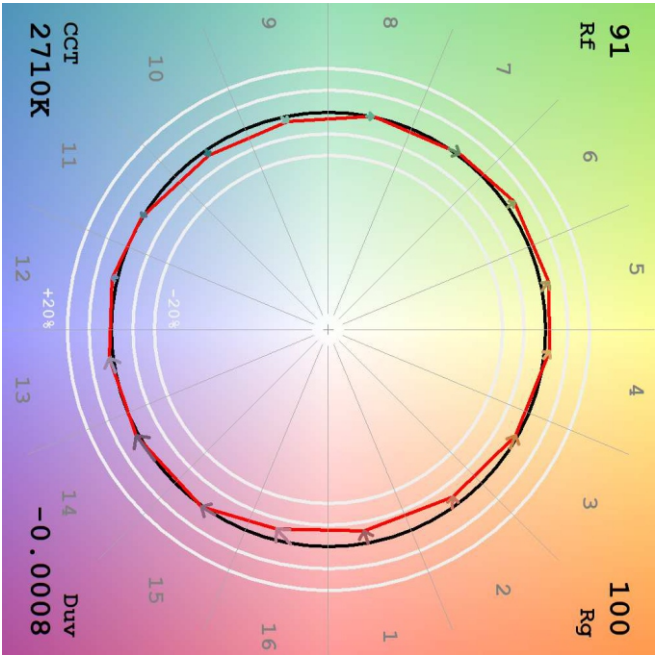
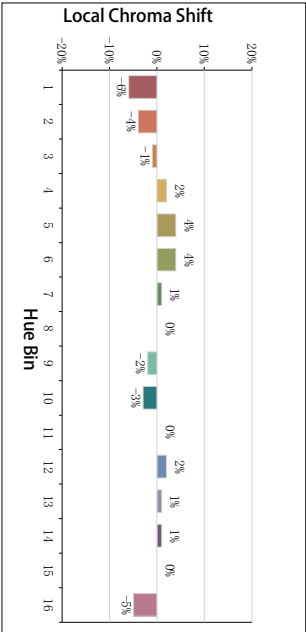
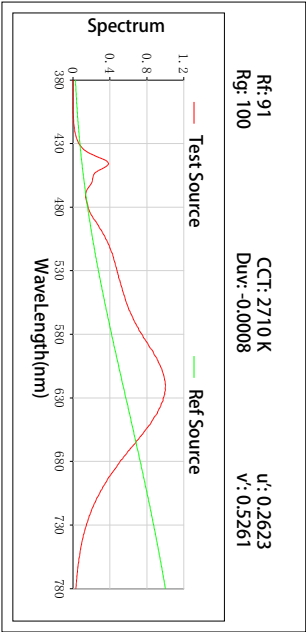
Freq=0.00 Hz

GBT5702

Ra = 92

Ga = 0.99

TM30



All Rf:

Rf1 = 95.3	Rf2 = 89.7	Rf3 = 87.9	Rf4 = 94.6
Rf5 = 79.6	Rf6 = 86.5	Rf7 = 85.4	Rf8 = 80.3
Rf9 = 97.6	Rf10 = 90.6	Rf11 = 88.5	Rf12 = 90.1
Rf13 = 90.9	Rf14 = 97.3	Rf15 = 92.8	Rf16 = 82.5
Rf17 = 84.9	Rf18 = 91.6	Rf19 = 93.8	Rf20 = 78.6
Rf21 = 92.2	Rf22 = 89.7	Rf23 = 96.3	Rf24 = 94.8
Rf25 = 93.9	Rf26 = 91.8	Rf27 = 98.0	Rf28 = 97.8
Rf29 = 88.8	Rf30 = 89.7	Rf31 = 90.4	Rf32 = 87.4
Rf33 = 88.6	Rf34 = 95.9	Rf35 = 98.2	Rf36 = 97.1
Rf37 = 96.3	Rf38 = 93.8	Rf39 = 96.8	Rf40 = 94.6
Rf41 = 92.8	Rf42 = 96.7	Rf43 = 92.0	Rf44 = 99.0
Rf45 = 94.8	Rf46 = 91.4	Rf47 = 85.8	Rf48 = 87.7
Rf49 = 91.2	Rf50 = 95.9	Rf51 = 96.0	Rf52 = 96.7
Rf53 = 92.7	Rf54 = 96.7	Rf55 = 96.5	Rf56 = 92.0
Rf57 = 91.4	Rf58 = 92.2	Rf59 = 97.0	Rf60 = 99.4
Rf61 = 97.2	Rf62 = 92.7	Rf63 = 91.7	Rf64 = 94.6
Rf65 = 90.1	Rf66 = 94.1	Rf67 = 94.2	Rf68 = 95.1
Rf69 = 97.4	Rf70 = 93.0	Rf71 = 95.4	Rf72 = 97.8
Rf73 = 89.7	Rf74 = 87.7	Rf75 = 94.9	Rf76 = 93.0
Rf77 = 86.3	Rf78 = 90.9	Rf79 = 89.3	Rf80 = 90.6
Rf81 = 75.1	Rf82 = 96.0	Rf83 = 92.9	Rf84 = 96.0
Rf85 = 83.4	Rf86 = 77.2	Rf87 = 90.3	Rf88 = 91.4
Rf89 = 81.5	Rf90 = 92.1	Rf91 = 91.8	Rf92 = 80.7
Rf93 = 87.9	Rf94 = 75.5	Rf95 = 86.5	Rf96 = 90.7
Rf97 = 93.0	Rf98 = 90.7	Rf99 = 87.5	