

Spectrum Test Report

Sample :
Specification : EKF5205COB
Sample No. : 16
Manufacturer :

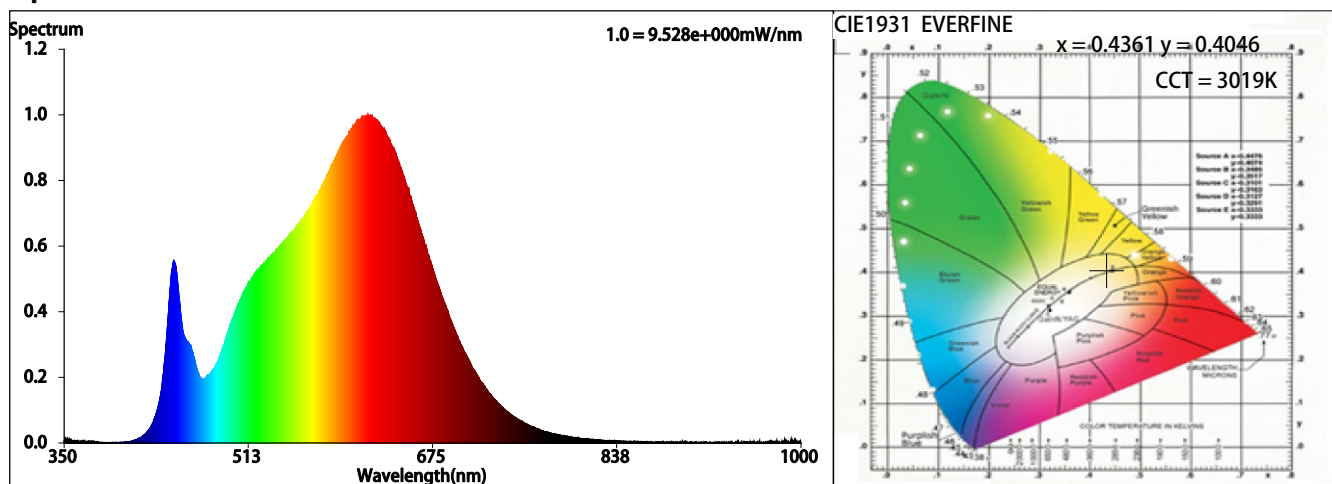
Date : 2022-04-07 10:38:21
Sam. Status :
Instrument : HAAS-2000(EVERFINE)
Test by : QC
Assessor : damin

Test Condition

Temperature : 25.3Deg
WL Range : 350nm-1000nm
Test Mode : Accuracy Test

RH : 55.0%
IP : 49529 (76%)
T : 539 ms
Sensitivity : High

Spectrum



Colorimetric Parameters

Chromaticity Coordinate: $x = 0.4361$ $y = 0.4046$ / $u' = 0.2498$ $v' = 0.5215$ ($duv=3.32e-04$)

CCT= 3019K Prcp WL: $L_d=582.6nm$ Purity=52.3%

Peak WL: $L_p=620nm$ FWHM: $=162.8nm$ Ratio:R=24.0% G=73.2% B=2.8%

Render Index: $R_a = 92.2$ TM30:Rf=92 Rg=100

R1=92 R2=95 R3=98 R4=93 R5=92 R6=95 R7=92

R8=80 R9=55 R10=89 R11=95 R12=83 R13=93 R14=98 R15=88

LEVEL:OUT WHITE:ANSI_3000K

Photometric & Radiometric Parameters

Flux = 504.78 lm Eff. : 95.53 lm/W Fe = 1.6389 W

Electrical parameters

V = 24.00 V I = 0.2202 A P = 5.284 W PF = 1.000

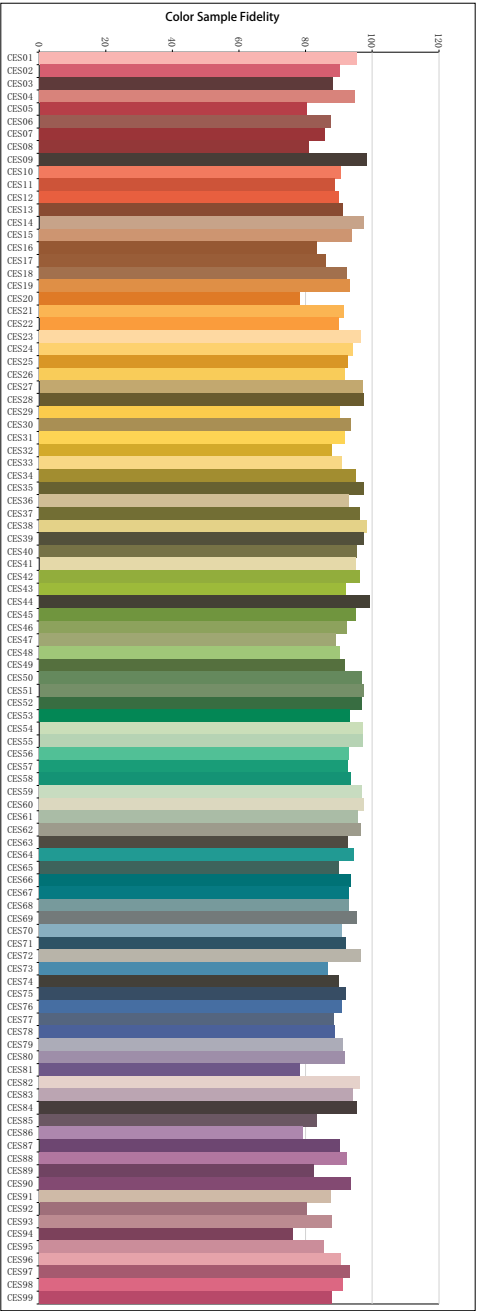
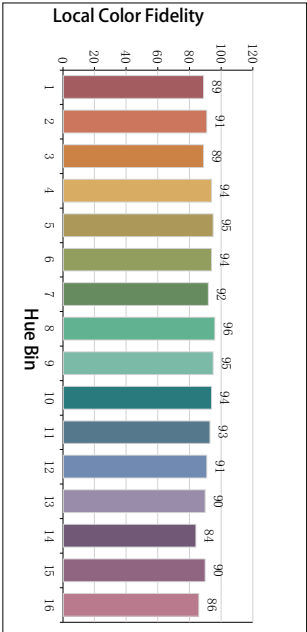
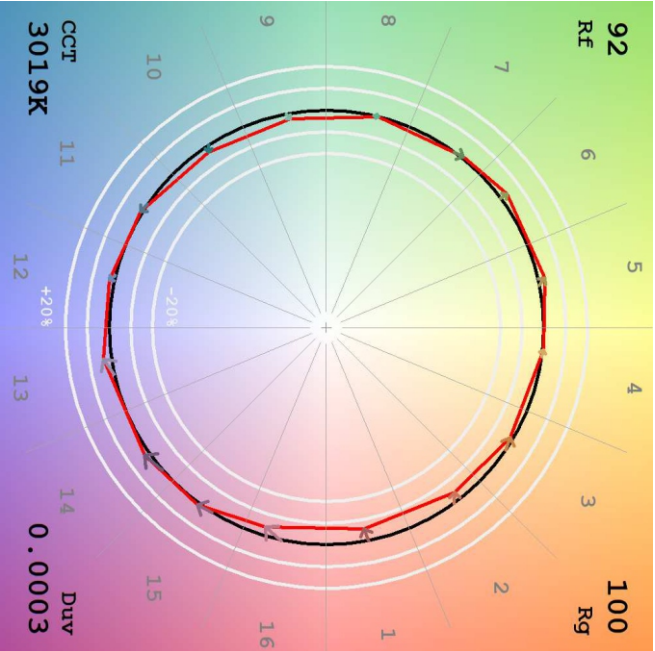
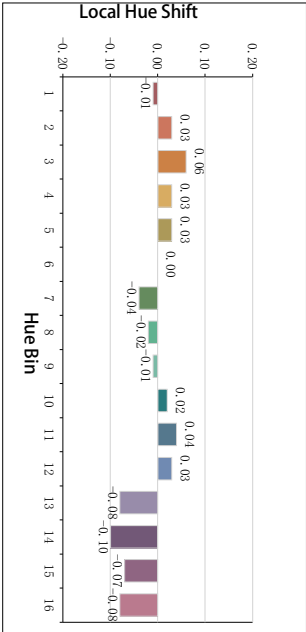
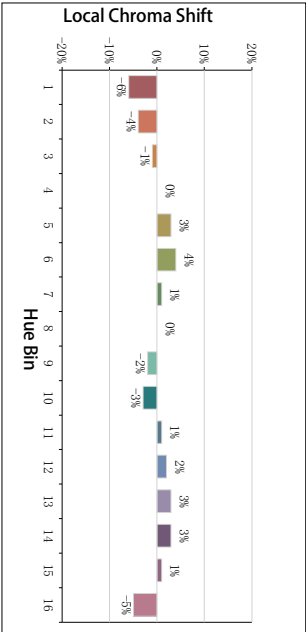
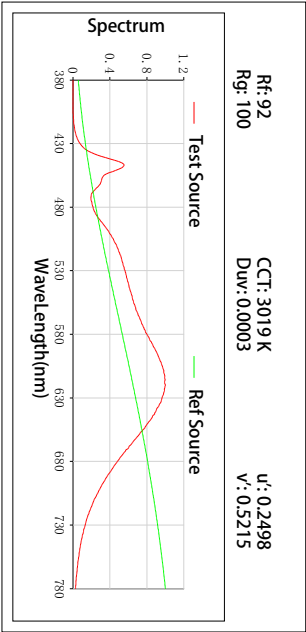
Freq=0.00 Hz

GBT5702

Ra = 92

Ga = 0.98

TM30



All Rf:

Rf1 = 95.5	Rf2 = 90.2	Rf3 = 88.2	Rf4 = 94.9
Rf5 = 80.3	Rf6 = 87.5	Rf7 = 85.7	Rf8 = 80.9
Rf9 = 98.4	Rf10 = 90.7	Rf11 = 88.8	Rf12 = 90.1
Rf13 = 91.2	Rf14 = 97.4	Rf15 = 93.9	Rf16 = 83.6
Rf17 = 86.1	Rf18 = 92.5	Rf19 = 93.3	Rf20 = 78.3
Rf21 = 91.6	Rf22 = 89.9	Rf23 = 96.6	Rf24 = 94.1
Rf25 = 92.7	Rf26 = 91.8	Rf27 = 97.1	Rf28 = 97.3
Rf29 = 90.5	Rf30 = 93.7	Rf31 = 91.7	Rf32 = 88.0
Rf33 = 91.1	Rf34 = 95.2	Rf35 = 97.6	Rf36 = 93.0
Rf37 = 96.2	Rf38 = 98.4	Rf39 = 97.5	Rf40 = 95.3
Rf41 = 94.9	Rf42 = 96.4	Rf43 = 92.1	Rf44 = 99.2
Rf45 = 95.1	Rf46 = 92.4	Rf47 = 89.0	Rf48 = 90.4
Rf49 = 91.9	Rf50 = 97.0	Rf51 = 97.4	Rf52 = 96.9
Rf53 = 93.4	Rf54 = 97.0	Rf55 = 97.0	Rf56 = 93.0
Rf57 = 92.7	Rf58 = 93.5	Rf59 = 96.9	Rf60 = 97.6
Rf61 = 95.8	Rf62 = 96.6	Rf63 = 92.7	Rf64 = 94.4
Rf65 = 89.9	Rf66 = 93.7	Rf67 = 93.2	Rf68 = 93.0
Rf69 = 95.4	Rf70 = 90.8	Rf71 = 92.0	Rf72 = 96.6
Rf73 = 86.8	Rf74 = 90.0	Rf75 = 92.0	Rf76 = 91.1
Rf77 = 88.5	Rf78 = 88.8	Rf79 = 91.3	Rf80 = 91.7
Rf81 = 78.3	Rf82 = 96.4	Rf83 = 94.1	Rf84 = 95.5
Rf85 = 83.5	Rf86 = 79.3	Rf87 = 90.1	Rf88 = 92.4
Rf89 = 82.5	Rf90 = 93.5	Rf91 = 87.6	Rf92 = 80.3
Rf93 = 87.9	Rf94 = 76.3	Rf95 = 85.7	Rf96 = 90.7
Rf97 = 93.4	Rf98 = 91.3	Rf99 = 88.0	