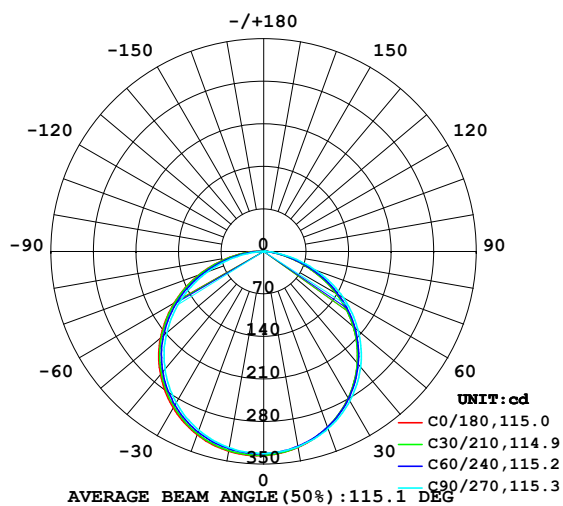


LUMINAIRE PHOTOMETRIC TEST REPORT

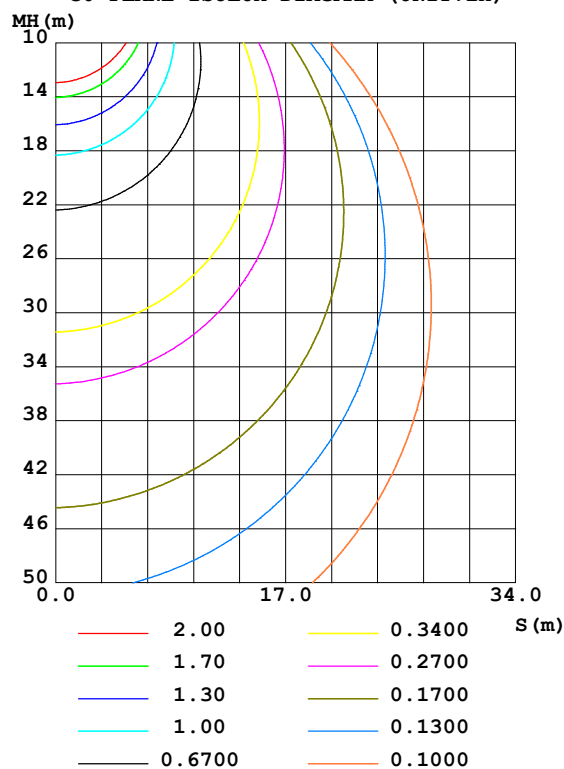
Test:U:24.0V I:0.416A P:9.98W PF:1.000 Freq:0Hz Lamp Flux:990.112x1 lm		
NAME: LED Soft light bar	SUR.:1.0m*0.01m	SERIAL No.:
MFR.: LEDIA		

DATA OF LAMP		PHOTOMETRIC DATA Eff: 99.17 lm/W			
MODEL	EKF4296HL90L	I _{max} (cd)	336.3	S/MH (C0/180)	1.32
NOMINAL POWER (W)	10	LOR (%)	100.0	S/MH (C90/270)	1.29
RATED VOLTAGE (V)	24	TOTAL FLUX (lm)	990.11	η UP, DN (C0-180)	0.3, 48.9
NOMINAL FLUX (lm)	990.112	CIE CLASS	DIRECT	η UP, DN (C180-360)	0.3, 50.4
LAMPS INSIDE	1	η up (%)	0.6	CIBSE SHR NOM	1.25
TEST VOLTAGE (V)	24	η down (%)	99.4	CIBSE SHR MAX	1.35

LUMINOUS INTENSITY DISTRIBUTION DIAGRAM



C0 PLANE ISOLUX DIAGRAM (UNIT:lx)



C Range: 0 - 360DEG
 C Interval: 15.0DEG
 Test Speed: HIGH
 Temperature: 24.7DEG
 Operators: Lingxin Xie
 Test Date: 2022-07-20

γ Range: 0 - 180DEG
 γ Interval: 1.0DEG
 Test System: EVERFINE GO-2000A_V1 SYSTEM V2.0.291
 Humidity: 54.2%
 Test Distance: 10.149m [K=1.0000]
 Remarks:

Checker: Jianfei Wu

Assessor: Lijian Jiang

ZONAL FLUX DIAGRAM

ZONAL FLUX DIAGRAM:

γ	C0	C45	C90	C135	C180	C225	C270	C315	γ	Φ zone	Φ total	%lum, lamp
10	327.2	326.3	326.1	331.0	333.7	332.5	327.7	326.9	0- 10	31.62	31.62	3.19,3.19
20	307.9	307.3	310.1	317.2	320.9	319.5	312.9	309.0	10- 20	90.91	122.5	12.4,12.4
30	278.7	278.8	284.0	293.4	297.7	295.8	287.7	281.3	20- 30	138.8	261.3	26.4,26.4
40	240.1	240.9	248.3	259.5	264.4	261.9	252.7	244.1	30- 40	169.0	430.3	43.5,43.5
50	192.5	193.5	203.4	216.0	221.8	218.9	208.0	197.8	40- 50	177.2	607.5	61.4,61.4
60	137.6	139.4	150.8	164.8	170.5	167.8	156.0	143.9	50- 60	161.5	769.0	77.7,77.7
70	78.19	80.32	91.72	107.7	114.1	109.8	97.77	84.29	60- 70	123.6	892.6	90.1,90.1
80	26.82	26.50	33.84	49.83	56.73	51.01	38.83	29.46	70- 80	70.09	962.7	97.2,97.2
90	3.495	2.187	0.2991	9.145	14.65	9.713	2.014	2.820	80- 90	21.03	983.7	99.4,99.4
100	0.4709	0.3785	0.3295	0.3253	0.8514	0.2431	0.2541	0.3223	90-100	2.034	985.7	99.6,99.6
110	0.5607	0.5723	0.5249	0.4891	0.3807	0.3798	0.4567	0.4883	100-110	0.4185	986.1	99.6,99.6
120	0.7814	0.7968	0.7670	0.7176	0.5904	0.5898	0.6850	0.6948	110-120	0.5848	986.7	99.7,99.7
130	0.9773	0.9996	0.9705	0.9380	0.8007	0.8075	0.9019	0.9050	120-130	0.7231	987.4	99.7,99.7
140	1.144	1.177	1.141	1.123	0.9999	1.010	1.083	1.082	130-140	0.7770	988.2	99.8,99.8
150	1.286	1.318	1.285	1.275	1.177	1.177	1.242	1.231	140-150	0.7365	989.0	99.9,99.9
160	1.412	1.416	1.387	1.391	1.333	1.311	1.362	1.365	150-160	0.6058	989.6	99.9,99.9
170	1.492	1.496	1.484	1.481	1.470	1.434	1.474	1.452	160-170	0.4021	990.0	100,100
180	1.550	1.521	1.517	1.525	1.546	1.503	1.525	1.532	170-180	0.1426	990.1	100,100
DEG	LUMINOUS INTENSITY:cd									UNIT:lm		

Conical surface Flux(90deg): 519.33 lm

%lum = 52.5%

%lamp = 52.5%

Conical surface Flux(120deg): 768.97 lm

%lum = 77.7%

%lamp = 77.7%

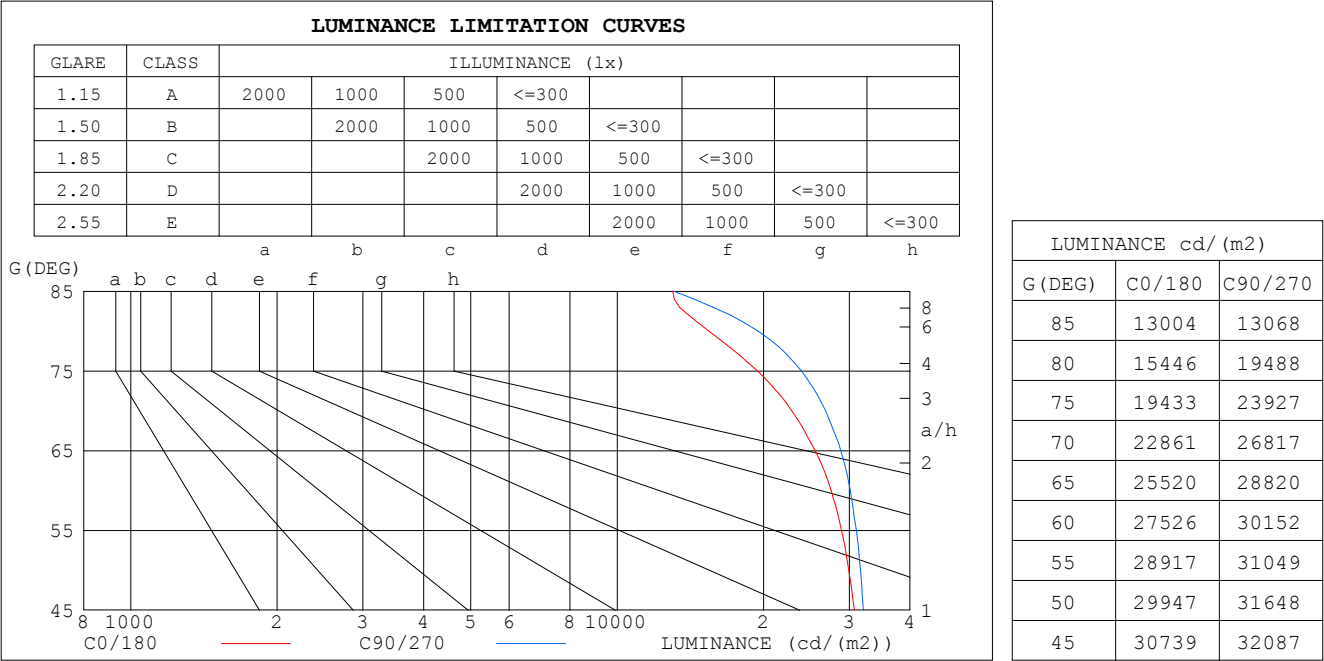
C Range: 0 - 360DEG
 C Interval: 15.0DEG
 Test Speed: HIGH
 Temperature:24.7DEG
 Operators:Lingxin Xie
 Test Date:2022-07-20

Checker: Jianfei Wu

γ Range: 0 - 180DEG
 γ Interval: 1.0DEG
 Test System:EVERFINE GO-2000A_V1 SYSTEM V2.0.291
 Humidity:54.2%
 Test Distance:10.149m [K=1.0000]
 Remarks:

Assessor: Lijian Jiang

LUMINANCE LIMITATION CURVES



C Range: 0 - 360DEG
C Interval: 15.0DEG
Test Speed: HIGH
Temperature:24.7DEG
Operators:Lingxin Xie
Test Date:2022-07-20

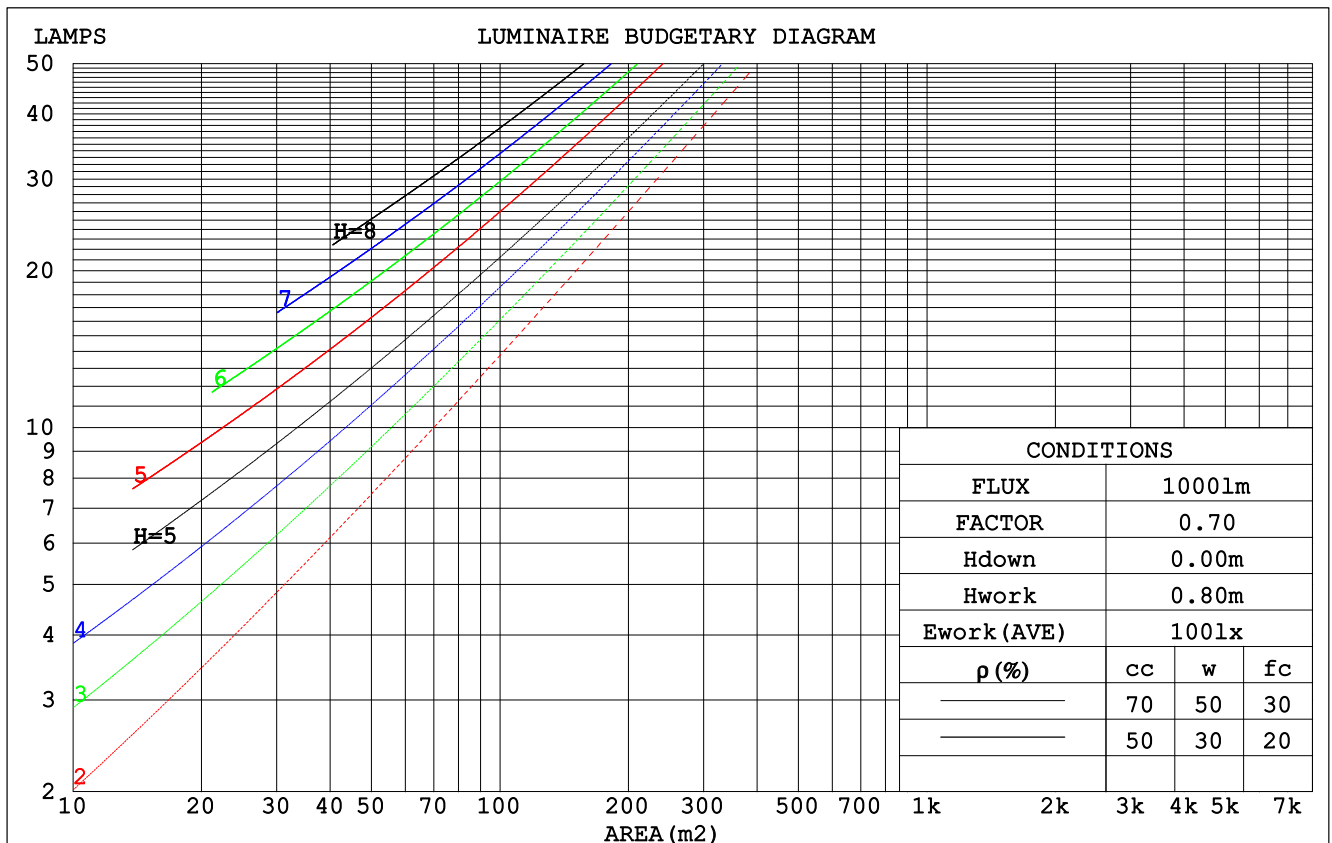
γ Range: 0 - 180DEG
γ Interval: 1.0DEG
Test System:EVERFINE GO-2000A_V1 SYSTEM V2.0.291
Humidity:54.2%
Test Distance:10.149m [K=1.0000]
Remarks:

Checker: Jianfei Wu

Assessor: Lijian Jiang

CU AND LUMINAIRE BUDGETARY ESTIMATE DIAGRAM

pcc	80%			70%			50%			30%			10%			0
pw	50%	30%	10%	50%	30%	10%	50%	30%	10%	50%	30%	10%	50%	30%	10%	0
pfc	20%			20%			20%			20%			20%			0
RCR	RCR:Room Cavity Ratio						Coefficients of Utilization(CU)									
0.0	1.19	1.19	1.19	1.16	1.16	1.16	1.11	1.11	1.11	1.06	1.06	1.06	1.01	1.01	1.01	.99
1.0	1.04	.99	.95	1.01	.97	.94	.97	.94	.91	.93	.90	.88	.89	.87	.85	.83
2.0	.90	.83	.77	.88	.82	.76	.84	.79	.74	.81	.76	.73	.78	.74	.71	.69
3.0	.79	.71	.64	.77	.70	.63	.74	.68	.62	.71	.66	.61	.69	.64	.60	.58
4.0	.70	.61	.54	.68	.60	.54	.66	.59	.53	.63	.57	.52	.61	.56	.51	.49
5.0	.62	.53	.46	.61	.52	.46	.59	.51	.46	.57	.50	.45	.55	.49	.44	.42
6.0	.56	.47	.40	.55	.46	.40	.53	.45	.40	.51	.45	.39	.50	.44	.39	.37
7.0	.51	.42	.36	.50	.41	.35	.48	.41	.35	.47	.40	.35	.45	.39	.35	.32
8.0	.46	.38	.32	.45	.37	.32	.44	.37	.31	.43	.36	.31	.42	.35	.31	.29
9.0	.42	.34	.28	.42	.34	.28	.41	.33	.28	.39	.33	.28	.38	.32	.28	.26
10.0	.39	.31	.26	.38	.31	.26	.37	.30	.26	.36	.30	.25	.36	.30	.25	.23



C Range: 0 - 360DEG
 C Interval: 15.0DEG
 Test Speed: HIGH
 Temperature: 24.7DEG
 Operators: Lingxin Xie
 Test Date: 2022-07-20

γ Range: 0 - 180DEG
 γ Interval: 1.0DEG
 Test System: EVERFINE GO-2000A_V1 SYSTEM V2.0.291
 Humidity: 54.2%
 Test Distance: 10.149m [K=1.0000]
 Remarks:

Checker: Jianfei Wu

Assessor: Lijian Jiang

WEC AND CCEC

pcc	80%			70%			50%			30%			10%			0
pw	50%	30%	10%	50%	30%	10%	50%	30%	10%	50%	30%	10%	50%	30%	10%	0
pfc	20%			20%			20%			20%			20%			0
RCR	RCR:Room Cavity Ratio						Wall Exitance Coefficients (WEC)									
0.0																
1.0	.314	.179	.057	.307	.175	.056	.293	.168	.054	.280	.162	.052	.269	.156	.050	
2.0	.295	.161	.050	.288	.159	.049	.276	.153	.048	.265	.149	.047	.255	.144	.045	
3.0	.272	.145	.043	.266	.143	.043	.256	.139	.042	.246	.135	.041	.237	.131	.041	
4.0	.251	.130	.038	.246	.129	.038	.236	.125	.037	.228	.122	.037	.219	.119	.036	
5.0	.232	.118	.034	.227	.117	.034	.219	.114	.034	.211	.111	.033	.204	.109	.033	
6.0	.215	.108	.031	.211	.107	.031	.203	.104	.030	.196	.102	.030	.190	.100	.030	
7.0	.200	.099	.028	.196	.098	.028	.190	.096	.028	.183	.094	.027	.177	.092	.027	
8.0	.187	.091	.026	.183	.090	.026	.177	.089	.025	.172	.087	.025	.166	.085	.025	
9.0	.175	.085	.024	.172	.084	.024	.166	.082	.023	.161	.081	.023	.157	.079	.023	
10.0	.164	.079	.022	.162	.078	.022	.157	.077	.022	.152	.076	.021	.148	.074	.021	

pcc	80%			70%			50%			30%			10%			0
pw	50%	30%	10%	50%	30%	10%	50%	30%	10%	50%	30%	10%	50%	30%	10%	0
pfc	20%			20%			20%			20%			20%			0
RCR	RCR:Room Cavity Ratio						Ceiling Cavity Exitance Coefficients (CCEC)									
0.0	.195	.195	.195	.167	.167	.167	.114	.114	.114	.065	.065	.065	.021	.021	.021	
1.0	.186	.161	.139	.159	.138	.120	.109	.095	.083	.063	.055	.048	.020	.018	.016	
2.0	.178	.137	.103	.152	.118	.089	.104	.082	.062	.060	.047	.036	.019	.015	.012	
3.0	.170	.119	.079	.146	.103	.069	.100	.072	.048	.058	.042	.028	.019	.014	.009	
4.0	.162	.106	.063	.139	.092	.055	.096	.064	.039	.055	.037	.023	.018	.012	.008	
5.0	.155	.096	.052	.133	.083	.045	.092	.058	.032	.053	.034	.019	.017	.011	.006	
6.0	.148	.087	.044	.127	.076	.038	.088	.053	.027	.051	.031	.016	.016	.010	.005	
7.0	.141	.081	.038	.121	.070	.033	.084	.049	.024	.049	.029	.014	.016	.009	.005	
8.0	.134	.075	.034	.116	.065	.029	.080	.046	.021	.047	.027	.012	.015	.009	.004	
9.0	.128	.070	.030	.111	.061	.026	.077	.043	.019	.045	.025	.011	.014	.008	.004	
10.0	.123	.065	.027	.106	.057	.024	.073	.040	.017	.043	.024	.010	.014	.008	.003	

C Range: 0 - 360DEG
 C Interval: 15.0DEG
 Test Speed: HIGH
 Temperature:24.7DEG
 Operators:Lingxin Xie
 Test Date:2022-07-20

γ Range: 0 - 180DEG
 γ Interval: 1.0DEG
 Test System:EVERFINE GO-2000A_V1 SYSTEM V2.0.291
 Humidity:54.2%
 Test Distance:10.149m [K=1.0000]
 Remarks:

Checker: Jianfei Wu

Assessor: Lijian Jiang

UGR(Unified Glare Rating) Table

ceiling/cavity	0.7	0.7	0.5	0.5	0.3	0.7	0.7	0.5	0.5	0.3
walls	0.5	0.3	0.5	0.3	0.3	0.5	0.3	0.5	0.3	0.3
working plane	0.2	0.2	0.2	0.2	0.2	0.2	0.2	0.2	0.2	0.2
Room dimensions	Viewed crosswise					Viewed endwise				
x = 2H y = 2H	24.3	25.8	24.5	26.0	26.2	24.6	26.1	24.9	26.3	26.5
3H	25.5	27.0	25.9	27.2	27.4	26.0	27.5	26.4	27.7	28.0
4H	26.0	27.3	26.3	27.6	27.9	26.6	27.9	26.9	28.2	28.5
6H	26.2	27.5	26.6	27.8	28.1	26.9	28.2	27.3	28.5	28.8
8H	26.3	27.5	26.6	27.8	28.1	27.0	28.2	27.4	28.5	28.8
12H	26.3	27.5	26.7	27.8	28.1	27.0	28.2	27.4	28.5	28.8
4H 2H	24.8	26.2	25.2	26.4	26.7	25.1	26.4	25.4	26.7	27.0
3H	26.3	27.4	26.6	27.8	28.1	26.7	27.9	27.1	28.2	28.5
4H	26.8	27.9	27.2	28.2	28.6	27.3	28.4	27.7	28.8	29.1
6H	27.1	28.1	27.5	28.5	28.8	27.8	28.7	28.2	29.1	29.5
8H	27.2	28.1	27.7	28.5	28.9	27.9	28.8	28.3	29.2	29.6
12H	27.3	28.1	27.7	28.5	28.9	27.9	28.8	28.4	29.1	29.6
8H 4H	27.0	27.9	27.4	28.3	28.7	27.5	28.4	27.9	28.8	29.2
6H	27.4	28.2	27.9	28.6	29.0	28.0	28.8	28.5	29.2	29.6
8H	27.6	28.2	28.0	28.7	29.1	28.2	28.8	28.6	29.3	29.7
12H	27.7	28.3	28.2	28.7	29.2	28.3	28.8	28.8	29.3	29.8
12H 4H	27.0	27.8	27.4	28.2	28.6	27.5	28.3	27.9	28.7	29.1
6H	27.5	28.1	27.9	28.5	29.0	28.0	28.7	28.5	29.1	29.6
8H	27.6	28.2	28.1	28.6	29.1	28.2	28.8	28.7	29.2	29.7
Variations with the observer position at spacings:										
S = 1.0H	+ 0.2 / - 0.2					+ 0.2 / - 0.2				
1.5H	+ 0.2 / - 0.4					+ 0.2 / - 0.3				
2.0H	+ 0.3 / - 0.3					+ 0.3 / - 0.3				

CIE Pub.117, 990.1 lm Total Lamp Luminous Flux Correct ($8\log(F/F_0) = -0.0$)

C Range: 0 - 360DEG
 C Interval: 15.0DEG
 Test Speed: HIGH
 Temperature: 24.7DEG
 Operators: Lingxin Xie
 Test Date: 2022-07-20

Checker: Jianfei Wu

γ Range: 0 - 180DEG
 γ Interval: 1.0DEG
 Test System: EVERFINE GO-2000A_V1 SYSTEM V2.0.291
 Humidity: 54.2%
 Test Distance: 10.149m [K=1.0000]
 Remarks:

Assessor: Lijian Jiang

UTILIZATION FACTORS TABLE

REFLECTANCE										
Ceiling	0.8	0.8	0.8	0.7	0.7	0.7	0.5	0.5	0.5	0
Walls	0.7	0.5	0.3	0.7	0.5	0.3	0.7	0.5	0.3	0
Working plane	0.2	0.2	0.2	0.2	0.2	0.2	0.2	0.2	0.2	0
ROOM INDEX	UTILIZATION FACTORS (PERCENT) $k(RI) \times RCR = 5$									
$k = 0.60$	57	45	38	56	45	38	55	44	38	31
0.80	67	55	48	66	55	47	64	54	47	40
1.00	75	64	57	74	63	56	72	65	56	49
1.25	82	72	65	81	71	64	78	70	63	56
1.50	87	77	70	86	77	70	83	75	69	61
2.00	94	86	79	93	84	78	89	82	77	69
2.50	98	90	84	96	89	83	92	86	81	73
3.00	102	95	89	100	93	88	95	90	86	77
4.00	106	100	95	103	98	94	99	95	91	82
5.00	108	103	99	106	101	98	101	98	94	85
ROOM INDEX	UF (total)									Direct
According to DIN EN 13032-2 2004			Suspended					SHRNOM = 1.25		

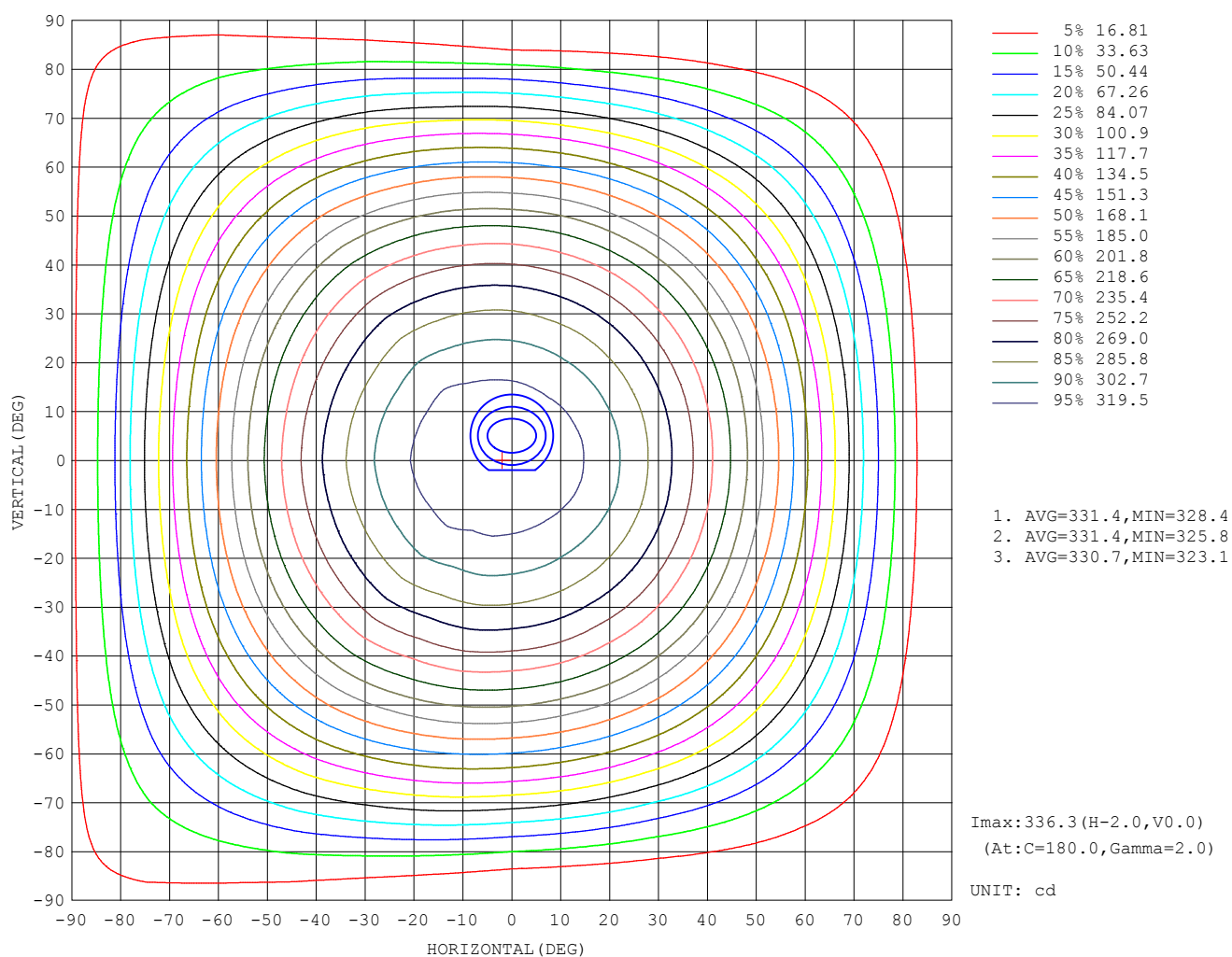
C Range: 0 - 360DEG
 C Interval: 15.0DEG
 Test Speed: HIGH
 Temperature: 24.7DEG
 Operators: Lingxin Xie
 Test Date: 2022-07-20

Checker: Jianfei Wu

γ Range: 0 - 180DEG
 γ Interval: 1.0DEG
 Test System: EVERFINE GO-2000A_V1 SYSTEM V2.0.291
 Humidity: 54.2%
 Test Distance: 10.149m [K=1.0000]
 Remarks:

Assessor: Lijian Jiang

ISOCANDELA DIAGRAM



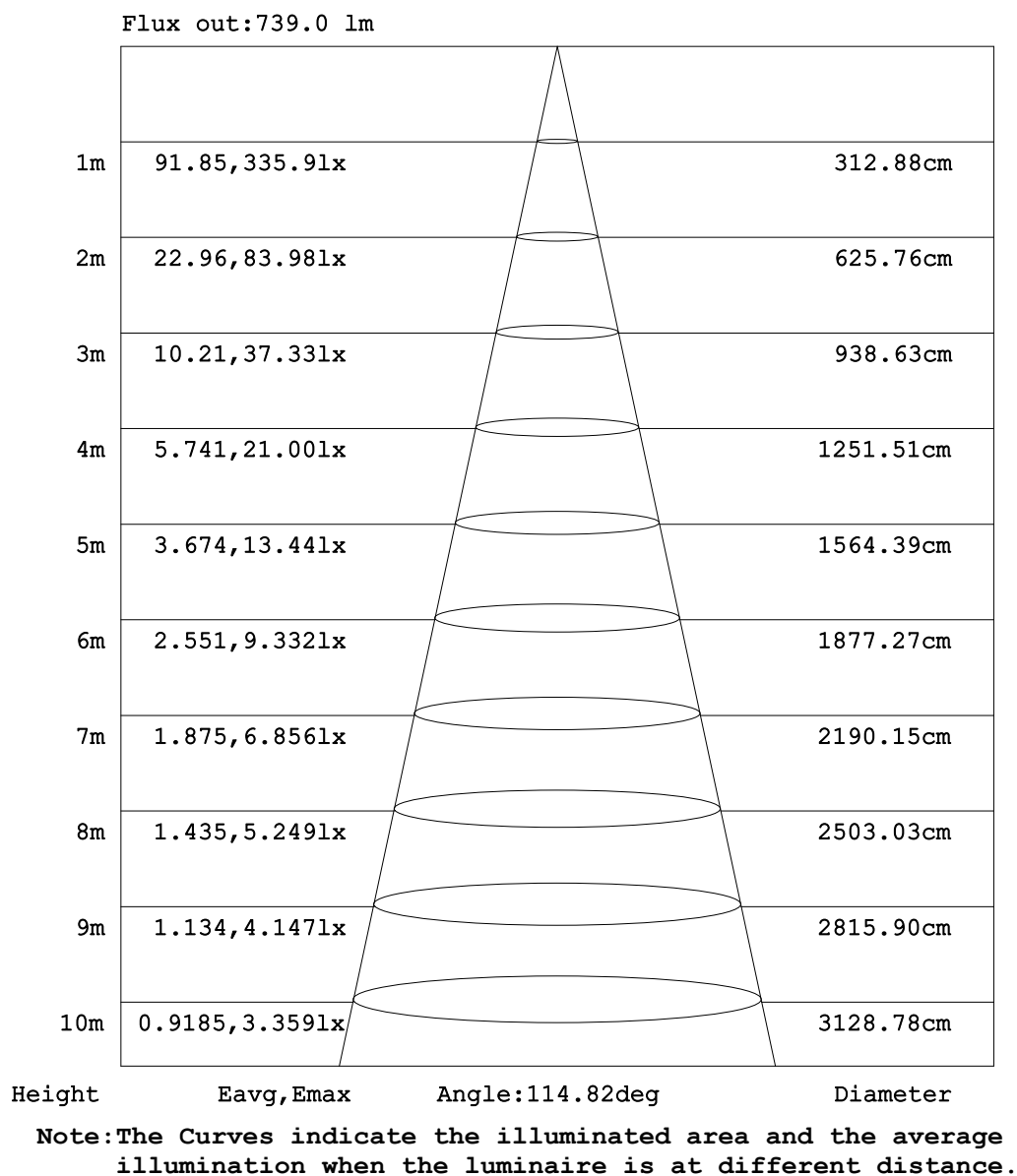
C Range: 0 - 360DEG
C Interval: 15.0DEG
Test Speed: HIGH
Temperature:24.7DEG
Operators:Lingxin Xie
Test Date:2022-07-20

γ Range: 0 - 180DEG
 γ Interval: 1.0DEG
Test System:EVERFINE GO-2000A_V1 SYSTEM V2.0.291
Humidity:54.2%
Test Distance:10.149m [K=1.0000]
Remarks:

Checker: Jianfei Wu

Assessor: Lijian Jiang

AAI Figure



C Range: 0 - 360DEG
 C Interval: 15.0DEG
 Test Speed: HIGH
 Temperature:24.7DEG
 Operators:Lingxin Xie
 Test Date:2022-07-20

γ Range: 0 - 180DEG
 γ Interval: 1.0DEG
 Test System:EVERFINE GO-2000A_V1 SYSTEM V2.0.291
 Humidity:54.2%
 Test Distance:10.149m [K=1.0000]
 Remarks:

Checker: Jianfei Wu

Assessor: Lijian Jiang

LED Avg.L Report

Test:U:24.0V I:0.416A P:9.98W PF:1.000 Freq:0Hz Lamp Flux:990.112x1 lm		
NAME: LED Soft light bar	SUR.:1.0m*0.01m	SERIAL No.:
MFR.: LEDIA		

AvgL	cd/m2
L_0~180 (65) av	29664
L_0~180 (75) av	26108
L_0~180 (85) av	25056
L_90~270 (65) av	29498
L_90~270 (75) av	25018
L_90~270 (85) av	13349
L_45 (65) av	29647
L_45 (75) av	25569
L_45 (85) av	20863

Standard: GB/T 29293-2012

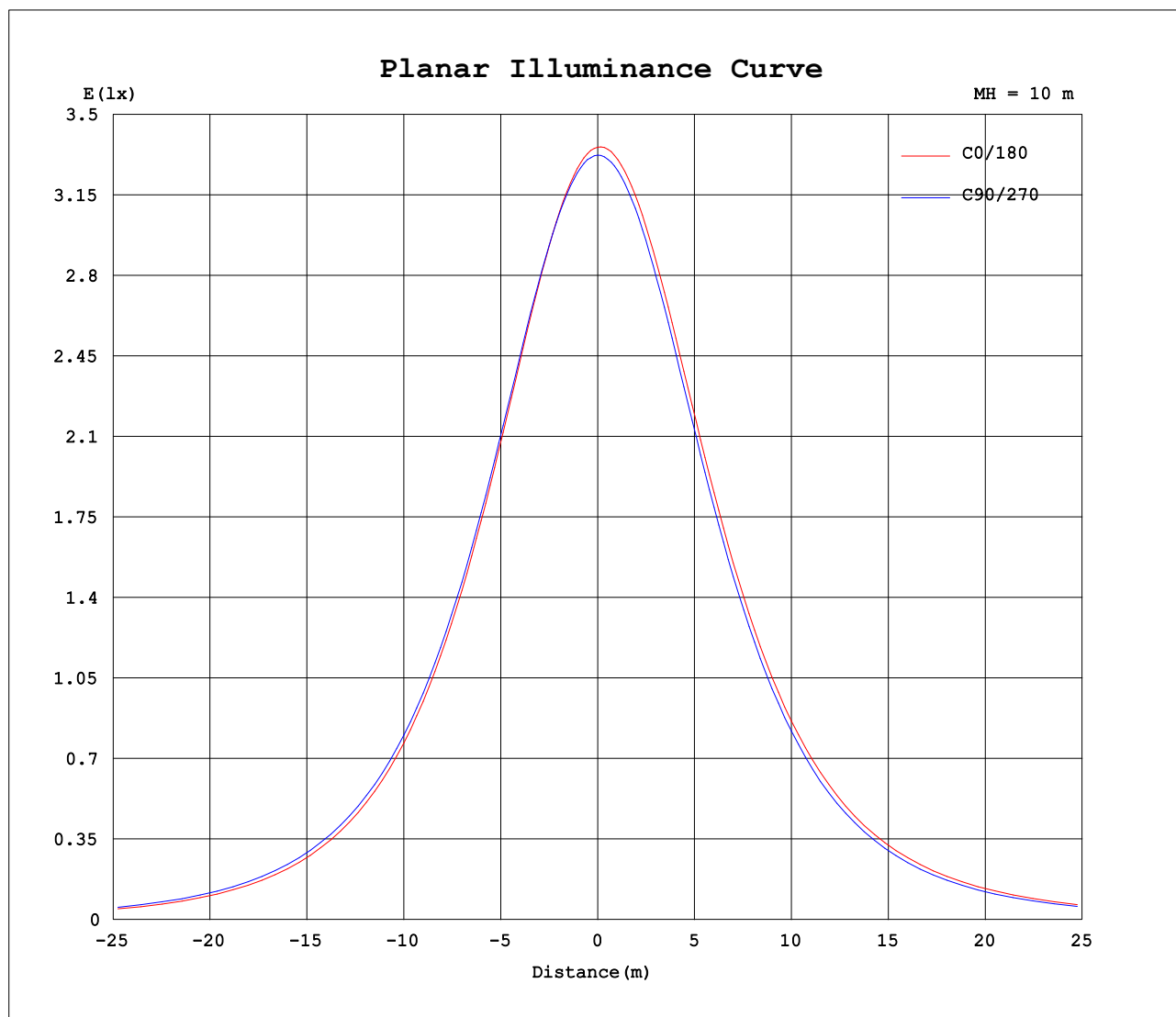
C Range: 0 - 360DEG
C Interval: 15.0DEG
Test Speed: HIGH
Temperature:24.7DEG
Operators:Lingxin Xie
Test Date:2022-07-20

Checker: Jianfei Wu

γ Range: 0 - 180DEG
γ Interval: 1.0DEG
Test System:EVERFINE GO-2000A_V1 SYSTEM V2.0.291
Humidity:54.2%
Test Distance:10.149m [K=1.0000]
Remarks:

Assessor: Lijian Jiang

Planar Illuminance Curve



C Range: 0 - 360DEG
C Interval: 15.0DEG
Test Speed: HIGH
Temperature: 24.7DEG
Operators: Lingxin Xie
Test Date: 2022-07-20

Checker: Jianfei Wu

γ Range: 0 - 180DEG
 γ Interval: 1.0DEG
Test System: EVERFINE GO-2000A_V1 SYSTEM V2.0.291
Humidity: 54.2%
Test Distance: 10.149m [K=1.0000]
Remarks:

Assessor: Lijian Jiang

LUMINOUS DISTRIBUTION INTENSITY DATA

Table--1

UNIT: cd

C (DEG) γ (DEG)	0	15	30	45	60	75	90	105	120	135	150	165	180	195	210	225	240	255	270
0	336	336	335	335	333	332	332	333	332	334	334	336	336	336	335	335	333	332	332
5	333	333	332	332	330	330	331	332	331	334	334	335	336	336	335	335	333	332	331
10	327	327	327	326	325	326	326	328	328	331	331	333	334	333	333	333	330	328	328
15	319	319	319	318	318	319	320	321	322	325	326	328	329	328	327	327	324	322	322
20	308	308	308	307	308	309	310	312	313	317	318	319	321	320	319	319	316	314	313
25	295	295	294	294	295	297	298	301	302	307	307	309	310	309	308	309	305	303	301
30	279	279	279	279	280	282	284	287	288	293	294	296	298	296	295	296	292	290	288
35	261	260	260	261	262	265	267	271	272	278	278	280	282	281	280	280	276	274	271
40	240	240	240	241	242	245	248	252	254	260	261	262	264	263	262	262	258	256	253
45	217	216	217	218	220	224	227	231	234	239	240	242	244	243	242	242	238	235	232
50	192	191	192	193	196	199	203	208	211	216	218	220	222	221	220	219	215	212	208
55	166	165	166	167	170	174	178	183	186	191	194	195	197	197	195	194	190	187	183
60	138	137	138	139	142	146	151	156	160	165	168	170	171	171	169	168	164	160	156
65	108	107	108	110	113	117	122	128	132	137	140	142	143	143	141	140	136	132	128
70	78.2	77.7	78.0	80.3	82.7	87.4	91.7	97.8	102	108	111	113	114	114	112	110	106	101	97.8
75	50.3	49.7	49.6	51.5	53.5	57.9	61.9	68.0	72.8	78.1	81.2	84.1	84.8	84.1	82.9	79.8	76.4	71.1	67.6
80	26.8	26.2	25.7	26.5	27.5	30.6	33.8	39.5	44.5	49.8	53.0	56.0	56.7	55.8	54.4	51.0	47.5	42.1	38.8
85	11.3	10.8	9.99	9.60	9.14	9.80	11.4	16.0	20.7	25.5	28.8	31.6	32.3	31.3	29.7	26.2	22.7	17.7	11.9
90	3.50	3.23	2.65	2.19	1.58	1.15	0.30	3.14	5.81	9.15	11.7	14.0	14.7	13.9	12.5	9.71	6.86	3.61	2.01
95	0.86	0.76	0.60	0.44	0.33	0.24	0.22	0.22	0.50	1.78	2.89	3.96	4.28	4.05	3.31	1.99	1.02	0.17	0.18
100	0.47	0.47	0.42	0.38	0.34	0.34	0.33	0.31	0.32	0.33	0.39	0.71	0.85	0.76	0.65	0.24	0.24	0.22	0.25
105	0.49	0.47	0.44	0.46	0.44	0.45	0.41	0.42	0.38	0.38	0.37	0.36	0.30	0.31	0.30	0.28	0.32	0.33	0.35
110	0.56	0.58	0.56	0.57	0.55	0.56	0.52	0.53	0.49	0.49	0.45	0.46	0.38	0.36	0.38	0.38	0.42	0.42	0.46
115	0.68	0.69	0.67	0.68	0.67	0.68	0.65	0.65	0.61	0.60	0.56	0.57	0.48	0.46	0.49	0.48	0.52	0.52	0.57
120	0.78	0.79	0.78	0.80	0.78	0.79	0.77	0.77	0.73	0.72	0.67	0.68	0.59	0.56	0.59	0.59	0.64	0.64	0.69
125	0.88	0.90	0.88	0.90	0.87	0.90	0.87	0.87	0.83	0.83	0.79	0.79	0.70	0.67	0.71	0.70	0.74	0.75	0.80
130	0.98	1.00	0.97	1.00	0.97	1.00	0.97	0.97	0.93	0.94	0.89	0.89	0.80	0.79	0.81	0.81	0.85	0.85	0.90
135	1.08	1.09	1.07	1.09	1.07	1.09	1.06	1.07	1.02	1.03	0.98	1.00	0.91	0.88	0.92	0.91	0.95	0.96	1.00
140	1.14	1.18	1.15	1.18	1.14	1.17	1.14	1.15	1.13	1.12	1.08	1.09	1.00	0.98	1.01	1.01	1.05	1.04	1.08
145	1.22	1.25	1.22	1.25	1.22	1.25	1.22	1.23	1.20	1.20	1.17	1.17	1.09	1.08	1.10	1.09	1.13	1.14	1.17
150	1.29	1.32	1.30	1.32	1.29	1.31	1.29	1.30	1.26	1.27	1.24	1.25	1.18	1.15	1.18	1.18	1.21	1.20	1.24
155	1.36	1.38	1.36	1.37	1.35	1.37	1.37	1.36	1.32	1.34	1.32	1.32	1.26	1.23	1.25	1.25	1.28	1.27	1.30
160	1.41	1.43	1.40	1.42	1.39	1.41	1.39	1.41	1.38	1.39	1.36	1.38	1.33	1.31	1.32	1.31	1.34	1.33	1.36
165	1.45	1.47	1.44	1.46	1.43	1.46	1.43	1.45	1.43	1.44	1.41	1.43	1.41	1.37	1.39	1.37	1.41	1.39	1.43
170	1.49	1.51	1.49	1.50	1.48	1.49	1.48	1.50	1.47	1.48	1.46	1.48	1.47	1.43	1.46	1.43	1.46	1.44	1.47
175	1.52	1.53	1.49	1.52	1.49	1.51	1.50	1.52	1.50	1.52	1.50	1.52	1.52	1.49	1.50	1.49	1.51	1.49	1.51
180	1.55	1.53	1.51	1.52	1.50	1.51	1.52	1.52	1.52	1.52	1.55	1.55	1.55	1.52	1.52	1.50	1.52	1.51	1.52

C Range: 0 - 360DEG
C Interval: 15.0DEG
Test Speed: HIGH
Temperature:24.7DEG
Operators:Lingxin Xie
Test Date:2022-07-20

γ Range: 0 - 180DEG
γ Interval: 1.0DEG
Test System:EVERFINE GO-2000A_V1 SYSTEM V2.0.291
Humidity:54.2%
Test Distance:10.149m [K=1.0000]
Remarks:

Checker: Jianfei Wu

Assessor: Lijian Jiang

LUMINOUS DISTRIBUTION INTENSITY DATA

Table--2

UNIT: cd

C (DEG) γ (DEG)	285	300	315	330	345													
0	333	332	334	334	336													
5	331	330	332	332	333													
10	327	326	327	327	327													
15	320	319	319	319	319													
20	311	310	309	308	308													
25	299	298	296	296	295													
30	285	283	281	280	280													
35	268	266	264	262	261													
40	250	247	244	242	241													
45	228	225	222	220	218													
50	205	201	198	195	194													
55	179	175	172	169	167													
60	152	148	144	141	139													
65	123	119	115	112	109													
70	92.9	88.7	84.3	81.7	79.0													
75	62.8	59.0	55.2	53.1	50.9													
80	34.6	32.0	29.5	28.5	27.2													
85	12.1	11.8	11.4	11.5	11.3													
90	1.53	2.36	2.82	3.34	3.42													
95	0.19	0.36	0.59	0.73	0.77													
100	0.27	0.29	0.32	0.36	0.40													
105	0.34	0.39	0.38	0.40	0.39													
110	0.45	0.49	0.49	0.50	0.50													
115	0.56	0.60	0.59	0.61	0.58													
120	0.68	0.71	0.69	0.71	0.69													
125	0.79	0.82	0.80	0.83	0.79													
130	0.89	0.92	0.91	0.93	0.90													
135	0.97	1.01	1.00	1.02	1.00													
140	1.09	1.09	1.08	1.11	1.09													
145	1.14	1.17	1.16	1.19	1.17													
150	1.21	1.25	1.23	1.26	1.26													
155	1.28	1.31	1.30	1.33	1.31													
160	1.35	1.37	1.37	1.39	1.37													
165	1.40	1.42	1.42	1.44	1.43													
170	1.44	1.47	1.45	1.48	1.48													
175	1.49	1.51	1.49	1.52	1.51													
180	1.52	1.52	1.53	1.54	1.55													

C Range: 0 - 360DEG
 C Interval: 15.0DEG
 Test Speed: HIGH
 Temperature:24.7DEG
 Operators:Lingxin Xie
 Test Date:2022-07-20

Checker: Jianfei Wu

γ Range: 0 - 180DEG
 γ Interval: 1.0DEG
 Test System:EVERFINE GO-2000A_V1 SYSTEM V2.0.291
 Humidity:54.2%
 Test Distance:10.149m [K=1.0000]
 Remarks:

Assessor: Lijian Jiang