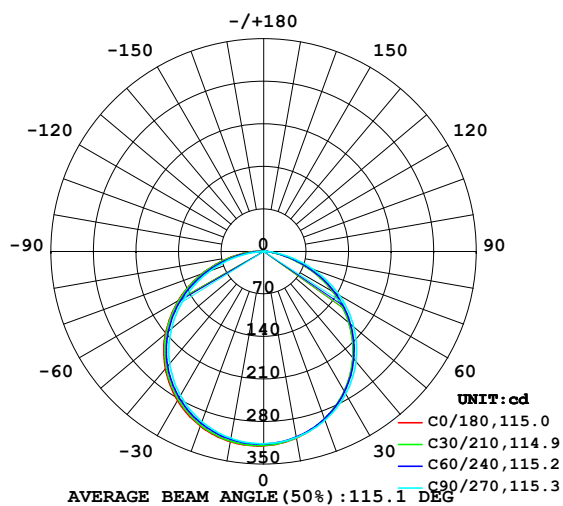


LUMINAIRE PHOTOMETRIC TEST REPORT

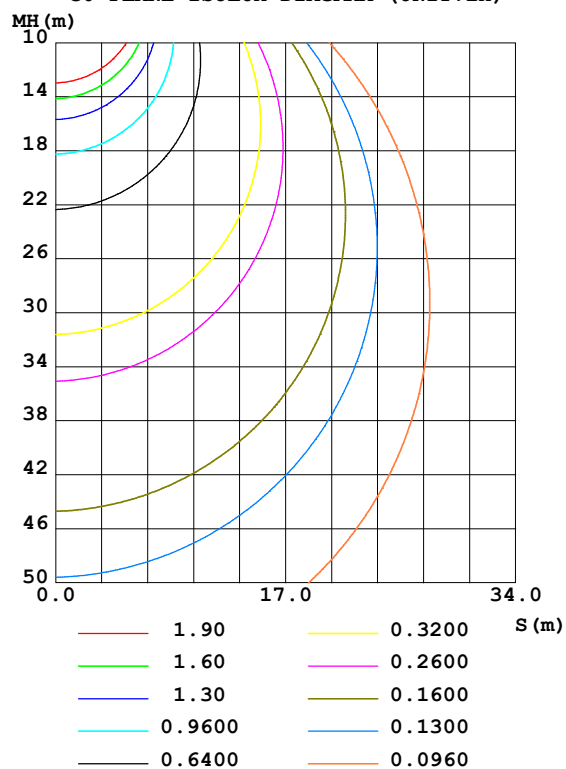
Test:U:24.0V I:0.422A P:10.13W PF:1.000 Freq:0Hz Lamp Flux:942.964x1 lm		
NAME: LED Soft light bar	SUR.:1.0m*0.01m	SERIAL No.:
MFR.: LEDIA		

DATA OF LAMP		PHOTOMETRIC DATA Eff: 93.10 lm/W			
MODEL	EKF4196HL90L	I _{max} (cd)	320.3	S/MH(C0/180)	1.32
NOMINAL POWER(W)	10	LOR(%)	100.0	S/MH(C90/270)	1.29
RATED VOLTAGE(V)	24	TOTAL FLUX(lm)	942.96	η UP,DN(C0-180)	0.3,48.9
NOMINAL FLUX(lm)	942.964	CIE CLASS	DIRECT	η UP,DN(C180-360)	0.3,50.4
LAMPS INSIDE	1	η up(%)	0.6	CIBSE SHR NOM	1.25
TEST VOLTAGE(V)	24	η down(%)	99.4	CIBSE SHR MAX	1.35

LUMINOUS INTENSITY DISTRIBUTION DIAGRAM



C0 PLANE ISOLUX DIAGRAM (UNIT:lx)



C Range: 0 - 360DEG
 C Interval: 15.0DEG
 Test Speed: HIGH
 Temperature: 24.7DEG
 Operators: Lingxin Xie
 Test Date: 2022-07-20

γ Range: 0 - 180DEG
 γ Interval: 1.0DEG
 Test System: EVERFINE GO-2000A_V1 SYSTEM V2.0.291
 Humidity: 54.2%
 Test Distance: 10.149m [K=1.0000]
 Remarks:

Checker: Jianfei Wu

Assessor: Lijian Jiang

ZONAL FLUX DIAGRAM

ZONAL FLUX DIAGRAM:

γ	C0	C45	C90	C135	C180	C225	C270	C315	γ	Φ zone	Φ total	%lum, lamp
10	311.6	310.7	310.6	315.2	317.8	316.7	312.1	311.4	0- 10	30.12	30.12	3.19,3.19
20	293.3	292.7	295.3	302.1	305.6	304.3	298.0	294.3	10- 20	86.58	116.7	12.4,12.4
30	265.5	265.5	270.5	279.4	283.5	281.7	274.0	267.9	20- 30	132.2	248.9	26.4,26.4
40	228.7	229.5	236.5	247.2	251.8	249.4	240.7	232.4	30- 40	160.9	409.8	43.5,43.5
50	183.3	184.3	193.7	205.7	211.2	208.5	198.1	188.4	40- 50	168.8	578.5	61.4,61.4
60	131.1	132.7	143.6	157.0	162.4	159.8	148.6	137.1	50- 60	153.8	732.4	77.7,77.7
70	74.47	76.49	87.35	102.5	108.7	104.6	93.11	80.27	60- 70	117.7	850.1	90.1,90.1
80	25.54	25.23	32.23	47.46	54.03	48.58	36.99	28.05	70- 80	66.75	916.8	97.2,97.2
90	3.329	2.083	0.2849	8.710	13.96	9.250	1.918	2.686	80- 90	20.03	936.8	99.4,99.4
100	0.4485	0.3605	0.3138	0.3098	0.8108	0.2315	0.2420	0.3069	90-100	1.937	938.8	99.6,99.6
110	0.5340	0.5451	0.4999	0.4658	0.3626	0.3617	0.4349	0.4651	100-110	0.3986	939.2	99.6,99.6
120	0.7442	0.7588	0.7305	0.6834	0.5623	0.5617	0.6524	0.6617	110-120	0.5569	939.7	99.7,99.7
130	0.9307	0.9520	0.9243	0.8933	0.7626	0.7690	0.8589	0.8619	120-130	0.6887	940.4	99.7,99.7
140	1.090	1.121	1.086	1.069	0.9523	0.9619	1.031	1.031	130-140	0.7400	941.2	99.8,99.8
150	1.224	1.255	1.224	1.214	1.121	1.121	1.183	1.172	140-150	0.7014	941.9	99.9,99.9
160	1.345	1.349	1.321	1.325	1.269	1.248	1.297	1.300	150-160	0.5770	942.4	99.9,99.9
170	1.421	1.424	1.414	1.411	1.400	1.366	1.404	1.383	160-170	0.3830	942.8	100,100
180	1.476	1.448	1.445	1.452	1.473	1.431	1.452	1.459	170-180	0.1358	943.0	100,100
DEG	LUMINOUS INTENSITY:cd									UNIT:lm		

Conical surface Flux(90deg): 494.6 lm

%lum = 52.5%

%lamp = 52.5%

Conical surface Flux(120deg): 732.36 lm

%lum = 77.7%

%lamp = 77.7%

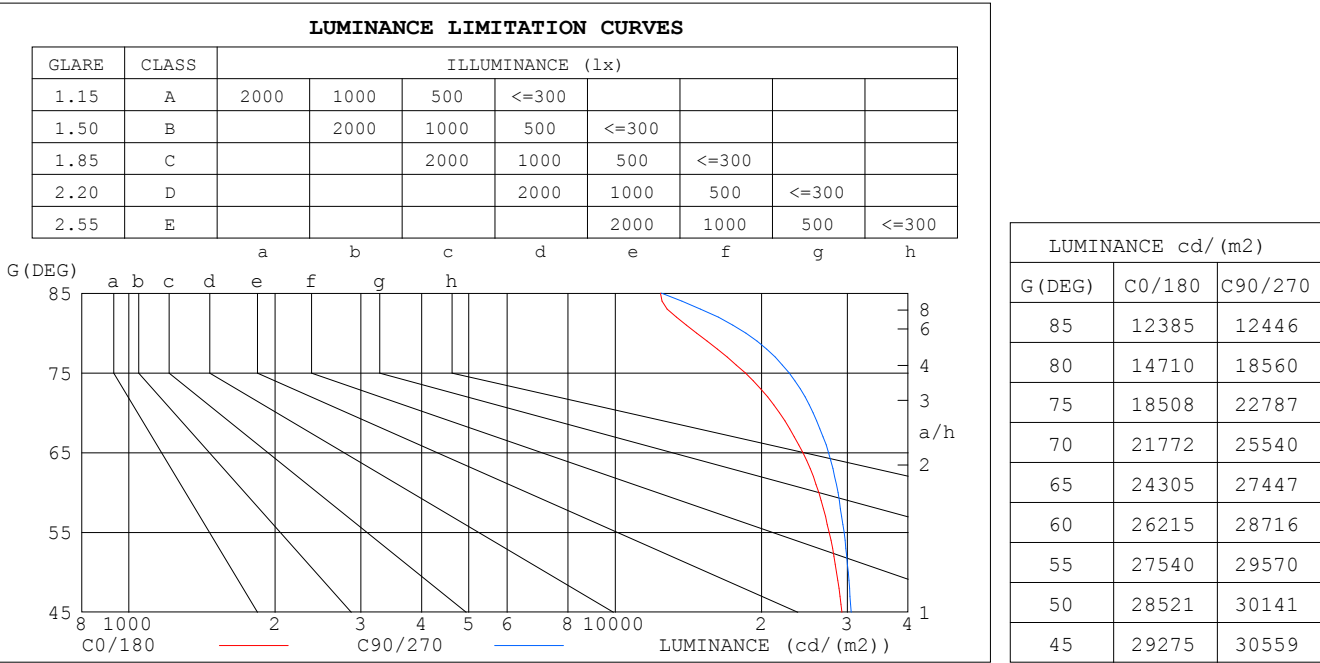
C Range: 0 - 360DEG
 C Interval: 15.0DEG
 Test Speed: HIGH
 Temperature:24.7DEG
 Operators:Lingxin Xie
 Test Date:2022-07-20

Checker: Jianfei Wu

γ Range: 0 - 180DEG
 γ Interval: 1.0DEG
 Test System:EVERFINE GO-2000A_V1 SYSTEM V2.0.291
 Humidity:54.2%
 Test Distance:10.149m [K=1.0000]
 Remarks:

Assessor: Lijian Jiang

LUMINANCE LIMITATION CURVES



C Range: 0 - 360DEG
C Interval: 15.0DEG
Test Speed: HIGH
Temperature:24.7DEG
Operators:Lingxin Xie
Test Date:2022-07-20

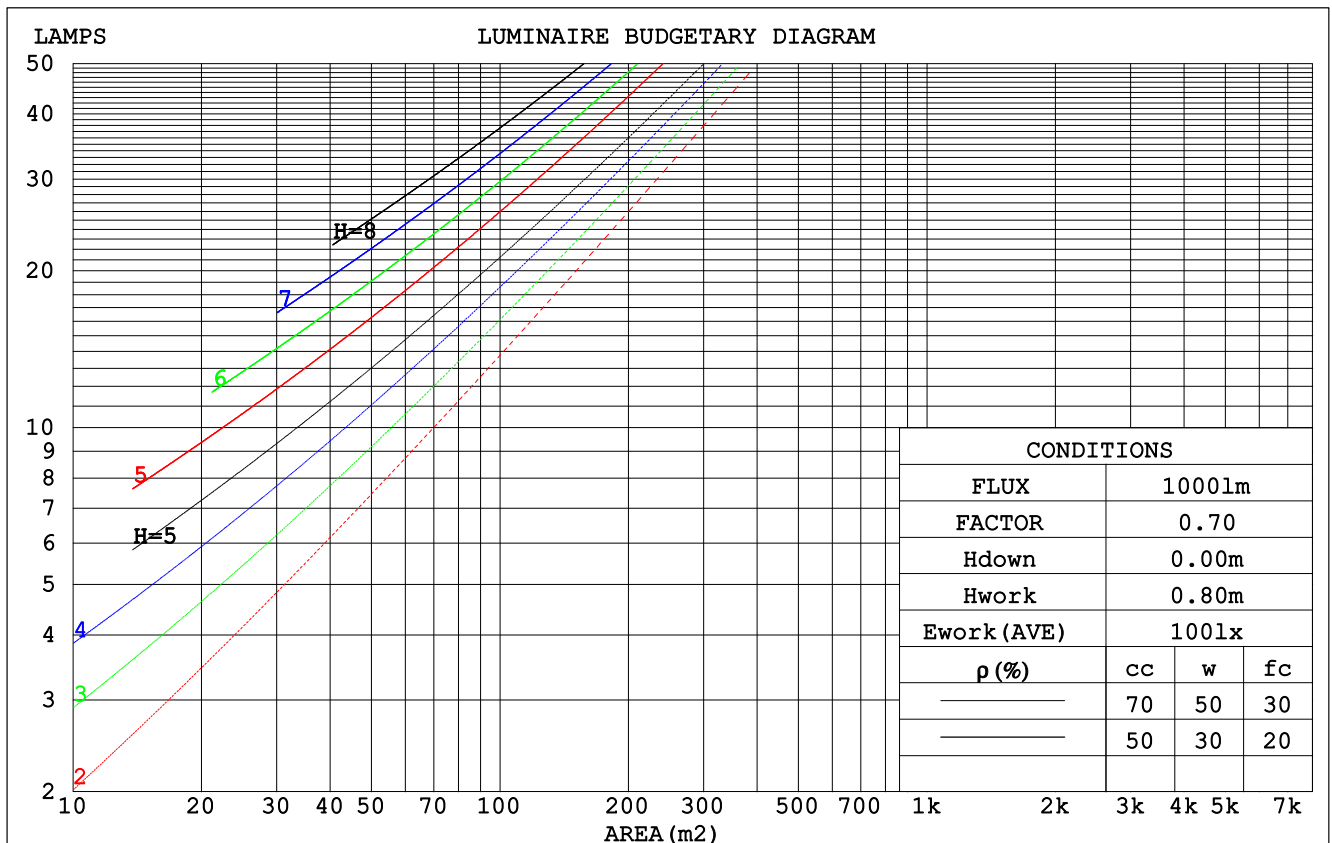
γ Range: 0 - 180DEG
γ Interval: 1.0DEG
Test System:EVERFINE GO-2000A_V1 SYSTEM V2.0.291
Humidity:54.2%
Test Distance:10.149m [K=1.0000]
Remarks:

Checker: Jianfei Wu

Assessor: Lijian Jiang

CU AND LUMINAIRE BUDGETARY ESTIMATE DIAGRAM

pcc	80%			70%			50%			30%			10%			0
pw	50%	30%	10%	50%	30%	10%	50%	30%	10%	50%	30%	10%	50%	30%	10%	0
pfc	20%			20%			20%			20%			20%			0
RCR	RCR:Room Cavity Ratio						Coefficients of Utilization(CU)									
0.0	1.19	1.19	1.19	1.16	1.16	1.16	1.11	1.11	1.11	1.06	1.06	1.06	1.01	1.01	1.01	.99
1.0	1.04	.99	.95	1.01	.97	.94	.97	.94	.91	.93	.90	.88	.89	.87	.85	.83
2.0	.90	.83	.77	.88	.82	.76	.84	.79	.74	.81	.76	.73	.78	.74	.71	.69
3.0	.79	.71	.64	.77	.70	.63	.74	.68	.62	.71	.66	.61	.69	.64	.60	.58
4.0	.70	.61	.54	.68	.60	.54	.66	.59	.53	.63	.57	.52	.61	.56	.51	.49
5.0	.62	.53	.46	.61	.52	.46	.59	.51	.46	.57	.50	.45	.55	.49	.44	.42
6.0	.56	.47	.40	.55	.46	.40	.53	.45	.40	.51	.45	.39	.50	.44	.39	.37
7.0	.51	.42	.36	.50	.41	.35	.48	.41	.35	.47	.40	.35	.45	.39	.35	.32
8.0	.46	.38	.32	.45	.37	.32	.44	.37	.31	.43	.36	.31	.42	.35	.31	.29
9.0	.42	.34	.28	.42	.34	.28	.41	.33	.28	.39	.33	.28	.38	.32	.28	.26
10.0	.39	.31	.26	.38	.31	.26	.37	.30	.26	.36	.30	.25	.36	.30	.25	.23



C Range: 0 - 360DEG
 C Interval: 15.0DEG
 Test Speed: HIGH
 Temperature: 24.7DEG
 Operators: Lingxin Xie
 Test Date: 2022-07-20

γ Range: 0 - 180DEG
 γ Interval: 1.0DEG
 Test System: EVERFINE GO-2000A_V1 SYSTEM V2.0.291
 Humidity: 54.2%
 Test Distance: 10.149m [K=1.0000]
 Remarks:

Checker: Jianfei Wu

Assessor: Lijian Jiang

WEC AND CCEC

pcc	80%			70%			50%			30%			10%			0
pw	50%	30%	10%	50%	30%	10%	50%	30%	10%	50%	30%	10%	50%	30%	10%	0
pfc	20%			20%			20%			20%			20%			0
RCR	RCR:Room Cavity Ratio						Wall Exitance Coefficients (WEC)									
0.0																
1.0	.314	.179	.057	.307	.175	.056	.293	.168	.054	.280	.162	.052	.269	.156	.050	
2.0	.295	.161	.050	.288	.159	.049	.276	.153	.048	.265	.149	.047	.255	.144	.045	
3.0	.272	.145	.043	.266	.143	.043	.256	.139	.042	.246	.135	.041	.237	.131	.041	
4.0	.251	.130	.038	.246	.129	.038	.236	.125	.037	.228	.122	.037	.219	.119	.036	
5.0	.232	.118	.034	.227	.117	.034	.219	.114	.034	.211	.111	.033	.204	.109	.033	
6.0	.215	.108	.031	.211	.107	.031	.203	.104	.030	.196	.102	.030	.190	.100	.030	
7.0	.200	.099	.028	.196	.098	.028	.190	.096	.028	.183	.094	.027	.177	.092	.027	
8.0	.187	.091	.026	.183	.090	.026	.177	.089	.025	.172	.087	.025	.166	.085	.025	
9.0	.175	.085	.024	.172	.084	.024	.166	.082	.023	.161	.081	.023	.157	.079	.023	
10.0	.164	.079	.022	.162	.078	.022	.157	.077	.022	.152	.076	.021	.148	.074	.021	

pcc	80%			70%			50%			30%			10%			0
pw	50%	30%	10%	50%	30%	10%	50%	30%	10%	50%	30%	10%	50%	30%	10%	0
pfc	20%			20%			20%			20%			20%			0
RCR	RCR:Room Cavity Ratio						Ceiling Cavity Exitance Coefficients (CCEC)									
0.0	.195	.195	.195	.167	.167	.167	.114	.114	.114	.065	.065	.065	.021	.021	.021	
1.0	.186	.161	.139	.159	.138	.120	.109	.095	.083	.063	.055	.048	.020	.018	.016	
2.0	.178	.137	.103	.152	.118	.089	.104	.082	.062	.060	.047	.036	.019	.015	.012	
3.0	.170	.119	.079	.146	.103	.069	.100	.072	.048	.058	.042	.028	.019	.014	.009	
4.0	.162	.106	.063	.139	.092	.055	.096	.064	.039	.055	.037	.023	.018	.012	.008	
5.0	.155	.096	.052	.133	.083	.045	.092	.058	.032	.053	.034	.019	.017	.011	.006	
6.0	.148	.087	.044	.127	.076	.038	.088	.053	.027	.051	.031	.016	.016	.010	.005	
7.0	.141	.081	.038	.121	.070	.033	.084	.049	.024	.049	.029	.014	.016	.009	.005	
8.0	.134	.075	.034	.116	.065	.029	.080	.046	.021	.047	.027	.012	.015	.009	.004	
9.0	.128	.070	.030	.111	.061	.026	.077	.043	.019	.045	.025	.011	.014	.008	.004	
10.0	.123	.065	.027	.106	.057	.024	.073	.040	.017	.043	.024	.010	.014	.008	.003	

C Range: 0 - 360DEG
 C Interval: 15.0DEG
 Test Speed: HIGH
 Temperature:24.7DEG
 Operators:Lingxin Xie
 Test Date:2022-07-20

γ Range: 0 - 180DEG
 γ Interval: 1.0DEG
 Test System:EVERFINE GO-2000A_V1 SYSTEM V2.0.291
 Humidity:54.2%
 Test Distance:10.149m [K=1.0000]
 Remarks:

Checker: Jianfei Wu

Assessor: Lijian Jiang

UGR(Unified Glare Rating) Table

ceiling/cavity	0.7	0.7	0.5	0.5	0.3	0.7	0.7	0.5	0.5	0.3
walls	0.5	0.3	0.5	0.3	0.3	0.5	0.3	0.5	0.3	0.3
working plane	0.2	0.2	0.2	0.2	0.2	0.2	0.2	0.2	0.2	0.2
Room dimensions	Viewed crosswise					Viewed endwise				
x = 2H y = 2H	24.3	25.8	24.5	26.0	26.2	24.6	26.1	24.9	26.3	26.5
3H	25.5	27.0	25.9	27.2	27.4	26.0	27.5	26.4	27.7	28.0
4H	26.0	27.3	26.3	27.6	27.9	26.6	27.9	26.9	28.2	28.5
6H	26.2	27.5	26.6	27.8	28.1	26.9	28.2	27.3	28.5	28.8
8H	26.3	27.5	26.6	27.8	28.1	27.0	28.2	27.4	28.5	28.8
12H	26.3	27.5	26.7	27.8	28.1	27.0	28.2	27.4	28.5	28.8
4H 2H	24.8	26.2	25.2	26.4	26.7	25.1	26.4	25.4	26.7	27.0
3H	26.3	27.4	26.6	27.8	28.1	26.7	27.9	27.1	28.2	28.5
4H	26.8	27.9	27.2	28.2	28.6	27.3	28.4	27.7	28.8	29.1
6H	27.1	28.1	27.5	28.5	28.8	27.8	28.7	28.2	29.1	29.5
8H	27.2	28.1	27.7	28.5	28.9	27.9	28.8	28.3	29.2	29.6
12H	27.3	28.1	27.7	28.5	28.9	27.9	28.8	28.4	29.1	29.6
8H 4H	27.0	27.9	27.4	28.3	28.7	27.5	28.4	27.9	28.8	29.2
6H	27.4	28.2	27.9	28.6	29.0	28.0	28.8	28.5	29.2	29.6
8H	27.6	28.2	28.0	28.7	29.1	28.2	28.8	28.6	29.3	29.7
12H	27.7	28.3	28.2	28.7	29.2	28.3	28.8	28.8	29.3	29.8
12H 4H	27.0	27.8	27.4	28.2	28.6	27.5	28.3	27.9	28.7	29.1
6H	27.5	28.1	27.9	28.5	29.0	28.0	28.7	28.5	29.1	29.6
8H	27.6	28.2	28.1	28.6	29.1	28.2	28.8	28.7	29.2	29.7
Variations with the observer position at spacings:										
S = 1.0H	+ 0.2 / - 0.2					+ 0.2 / - 0.2				
1.5H	+ 0.2 / - 0.4					+ 0.2 / - 0.3				
2.0H	+ 0.3 / - 0.3					+ 0.3 / - 0.3				

CIE Pub.117, 943.0 lm Total Lamp Luminous Flux Correct (8log(F/F0) = -0.2)

C Range: 0 - 360DEG
C Interval: 15.0DEG
Test Speed: HIGH
Temperature:24.7DEG
Operators:Lingxin Xie
Test Date:2022-07-20

γ Range: 0 - 180DEG
 γ Interval: 1.0DEG
Test System:EVERFINE GO-2000A_V1 SYSTEM V2.0.291
Humidity:54.2%
Test Distance:10.149m [K=1.0000]
Remarks:

Checker: Jianfei Wu

Assessor: Lijian Jiang

UTILIZATION FACTORS TABLE

REFLECTANCE										
Ceiling	0.8	0.8	0.8	0.7	0.7	0.7	0.5	0.5	0.5	0
Walls	0.7	0.5	0.3	0.7	0.5	0.3	0.7	0.5	0.3	0
Working plane	0.2	0.2	0.2	0.2	0.2	0.2	0.2	0.2	0.2	0
ROOM INDEX	UTILIZATION FACTORS (PERCENT) $k(RI) \times RCR = 5$									
$k = 0.60$	57	45	38	56	45	38	55	44	38	31
0.80	67	55	48	66	55	47	64	54	47	40
1.00	75	64	57	74	63	56	72	65	56	49
1.25	82	72	65	81	71	64	78	70	63	56
1.50	87	77	70	86	77	70	83	75	69	61
2.00	94	86	79	93	84	78	89	82	77	69
2.50	98	90	84	96	89	83	92	86	81	73
3.00	102	95	89	100	93	88	95	90	86	77
4.00	106	100	95	103	98	94	99	95	91	82
5.00	108	103	99	106	101	98	101	98	94	85
ROOM INDEX	UF (total)									Direct
According to DIN EN 13032-2 2004			Suspended					SHRNOM = 1.25		

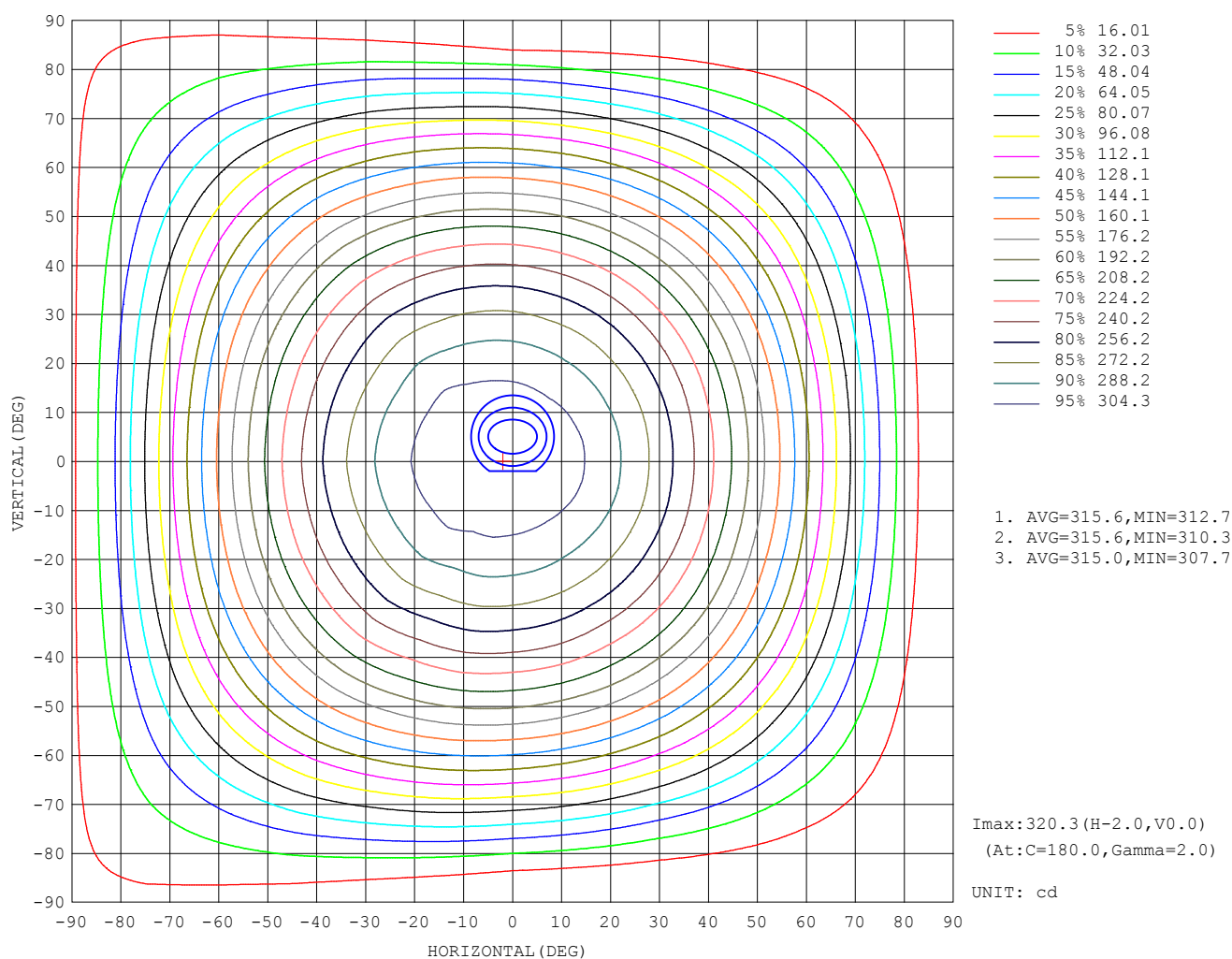
C Range: 0 - 360DEG
 C Interval: 15.0DEG
 Test Speed: HIGH
 Temperature: 24.7DEG
 Operators: Lingxin Xie
 Test Date: 2022-07-20

Checker: Jianfei Wu

γ Range: 0 - 180DEG
 γ Interval: 1.0DEG
 Test System: EVERFINE GO-2000A_V1 SYSTEM V2.0.291
 Humidity: 54.2%
 Test Distance: 10.149m [K=1.0000]
 Remarks:

Assessor: Lijian Jiang

ISOCANDELA DIAGRAM



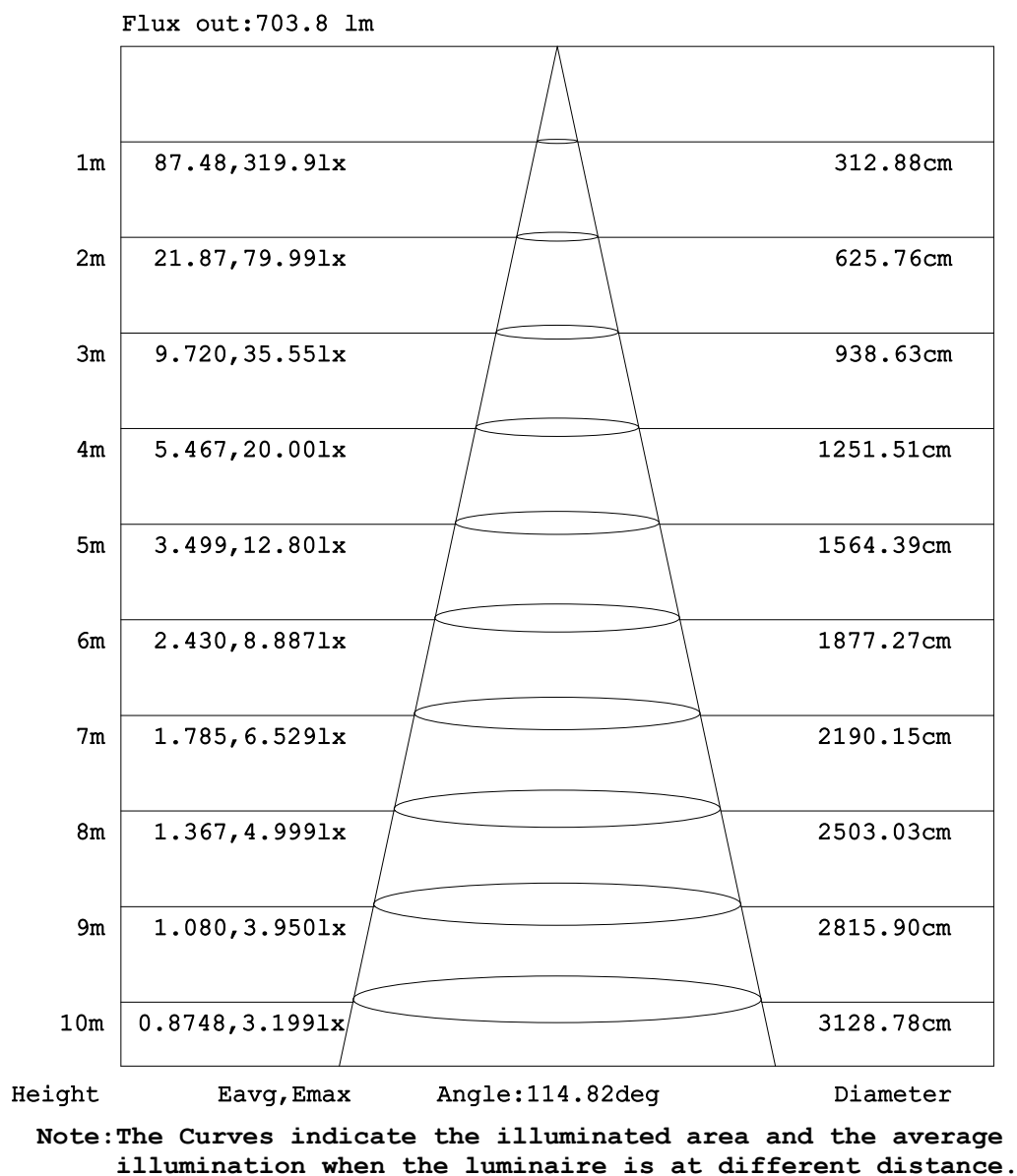
C Range: 0 - 360DEG
C Interval: 15.0DEG
Test Speed: HIGH
Temperature:24.7DEG
Operators:Lingxin Xie
Test Date:2022-07-20

Checker: Jianfei Wu

γ Range: 0 - 180DEG
 γ Interval: 1.0DEG
Test System:EVERFINE GO-2000A_V1 SYSTEM V2.0.291
Humidity:54.2%
Test Distance:10.149m [K=1.0000]
Remarks:

Assessor: Lijian Jiang

AAI Figure



C Range: 0 - 360DEG
 C Interval: 15.0DEG
 Test Speed: HIGH
 Temperature: 24.7DEG
 Operators: Lingxin Xie
 Test Date: 2022-07-20

γ Range: 0 - 180DEG
 γ Interval: 1.0DEG
 Test System: EVERFINE GO-2000A_V1 SYSTEM V2.0.291
 Humidity: 54.2%
 Test Distance: 10.149m [K=1.0000]
 Remarks:

Checker: Jianfei Wu

Assessor: Lijian Jiang

LED Avg.L Report

Test:U:24.0V I:0.422A P:10.13W PF:1.000 Freq:0Hz Lamp Flux:942.964x1 lm		
NAME: LED Soft light bar	SUR.:1.0m*0.01m	SERIAL No.:
MFR.: LEDIA		

AvgL	cd/m2
L_0~180 (65) av	28252
L_0~180 (75) av	24865
L_0~180 (85) av	23863
L_90~270 (65) av	28093
L_90~270 (75) av	23827
L_90~270 (85) av	12713
L_45 (65) av	28235
L_45 (75) av	24351
L_45 (85) av	19870

Standard: GB/T 29293-2012

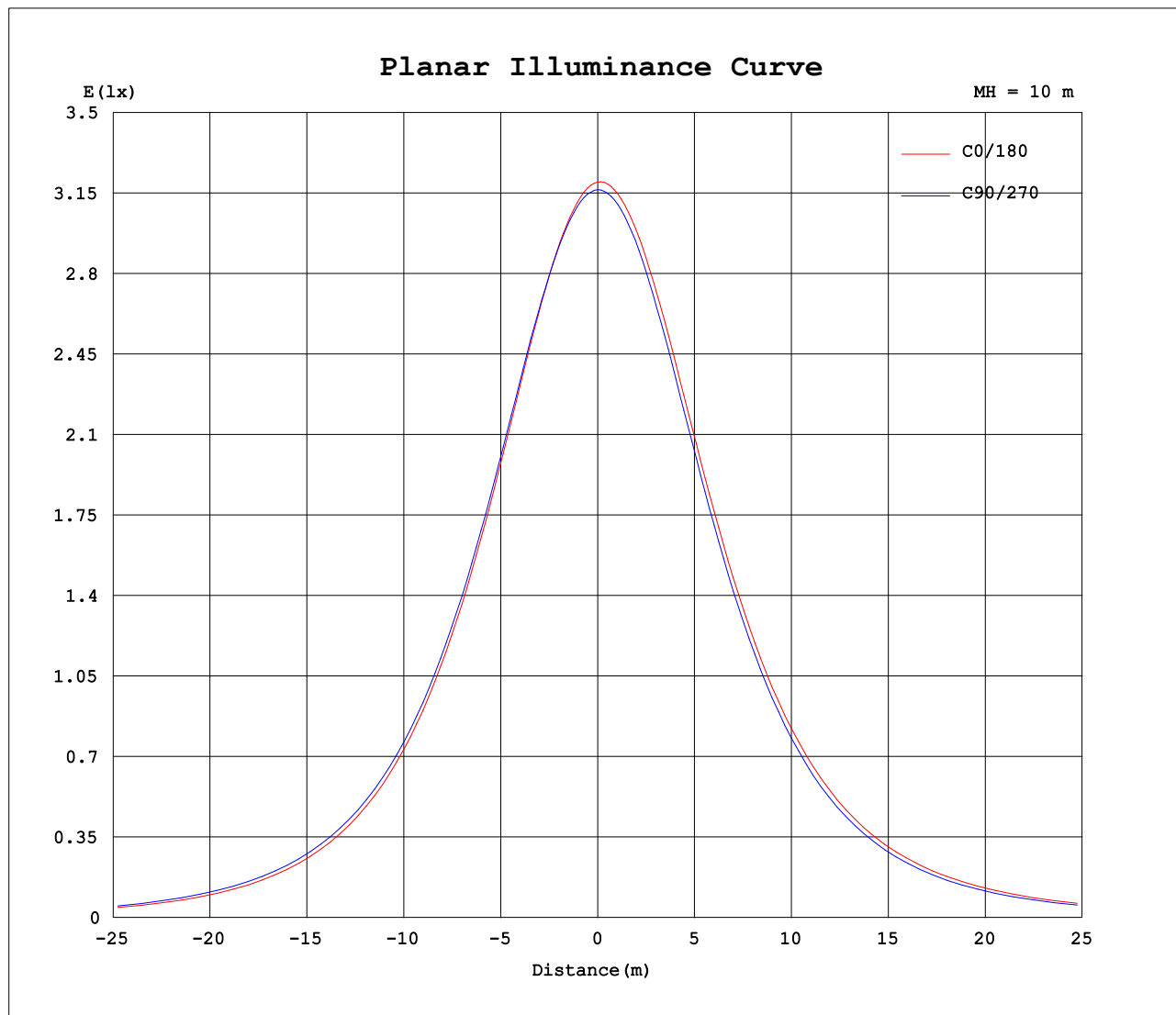
C Range: 0 - 360DEG
 C Interval: 15.0DEG
 Test Speed: HIGH
 Temperature:24.7DEG
 Operators:Lingxin Xie
 Test Date:2022-07-20

Checker: Jianfei Wu

γ Range: 0 - 180DEG
 γ Interval: 1.0DEG
 Test System:EVERFINE GO-2000A_V1 SYSTEM V2.0.291
 Humidity:54.2%
 Test Distance:10.149m [K=1.0000]
 Remarks:

Assessor: Lijian Jiang

Planar Illuminance Curve



C Range: 0 - 360DEG
C Interval: 15.0DEG
Test Speed: HIGH
Temperature: 24.7DEG
Operators: Lingxin Xie
Test Date: 2022-07-20

Checker: Jianfei Wu

γ Range: 0 - 180DEG
 γ Interval: 1.0DEG
Test System: EVERFINE GO-2000A_V1 SYSTEM V2.0.291
Humidity: 54.2%
Test Distance: 10.149m [K=1.0000]
Remarks:

Assessor: Lijian Jiang

LUMINOUS DISTRIBUTION INTENSITY DATA

Table--1

UNIT: cd

C (DEG) γ (DEG)	0	15	30	45	60	75	90	105	120	135	150	165	180	195	210	225	240	255	270
0	320	320	319	319	317	316	316	317	316	318	318	320	320	320	319	319	317	316	316
5	317	317	316	316	315	315	315	316	316	318	318	320	320	320	319	319	317	316	316
10	312	312	311	311	310	310	311	312	312	315	316	317	318	317	317	317	314	313	312
15	304	304	303	303	303	303	304	306	306	310	310	312	313	312	312	312	309	307	306
20	293	293	293	293	293	294	295	297	298	302	303	304	306	305	304	304	301	299	298
25	281	281	280	280	281	282	284	286	288	292	292	294	296	295	294	294	291	289	287
30	265	265	265	266	266	268	270	273	274	279	280	281	283	282	281	282	278	276	274
35	248	248	248	249	250	252	254	258	259	264	265	267	269	268	266	267	263	261	258
40	229	228	228	229	231	234	236	240	242	247	248	250	252	251	249	249	246	243	241
45	207	206	207	208	210	213	216	220	223	228	229	231	233	232	231	230	227	224	221
50	183	182	183	184	187	190	194	198	201	206	208	210	211	210	209	209	205	202	198
55	158	157	158	159	162	165	170	174	177	182	185	186	187	187	186	185	181	178	174
60	131	130	131	133	135	139	144	148	153	157	160	162	162	163	161	160	156	153	149
65	103	102	103	105	108	112	116	122	126	130	133	135	136	136	135	133	129	125	121
70	74.5	74.0	74.3	76.5	78.8	83.2	87.4	93.2	97.4	103	105	108	109	108	107	105	101	96.6	93.1
75	47.9	47.3	47.3	49.1	51.0	55.1	59.0	64.8	69.4	74.4	77.4	80.1	80.8	80.1	79.0	76.0	72.8	67.7	64.4
80	25.5	25.0	24.4	25.2	26.2	29.1	32.2	37.6	42.3	47.5	50.5	53.3	54.0	53.1	51.9	48.6	45.3	40.1	37.0
85	10.8	10.3	9.52	9.14	8.70	9.33	10.8	15.2	19.7	24.3	27.4	30.1	30.8	29.8	28.3	25.0	21.6	16.8	11.3
90	3.33	3.07	2.52	2.08	1.51	1.09	0.28	2.99	5.53	8.71	11.2	13.3	14.0	13.3	11.9	9.25	6.53	3.44	1.92
95	0.82	0.73	0.57	0.42	0.31	0.23	0.21	0.21	0.48	1.70	2.75	3.77	4.08	3.85	3.16	1.89	0.97	0.17	0.17
100	0.45	0.45	0.40	0.36	0.33	0.32	0.31	0.30	0.30	0.31	0.37	0.67	0.81	0.73	0.62	0.23	0.22	0.21	0.24
105	0.47	0.45	0.42	0.44	0.42	0.42	0.39	0.40	0.36	0.37	0.35	0.34	0.29	0.30	0.28	0.27	0.30	0.31	0.33
110	0.53	0.55	0.53	0.55	0.52	0.53	0.50	0.50	0.47	0.47	0.43	0.44	0.36	0.34	0.36	0.36	0.40	0.40	0.43
115	0.65	0.66	0.63	0.65	0.63	0.65	0.62	0.62	0.58	0.58	0.53	0.54	0.46	0.44	0.47	0.46	0.50	0.50	0.54
120	0.74	0.76	0.74	0.76	0.74	0.75	0.73	0.73	0.69	0.68	0.64	0.65	0.56	0.53	0.57	0.56	0.61	0.61	0.65
125	0.84	0.86	0.84	0.86	0.83	0.86	0.83	0.83	0.79	0.79	0.75	0.75	0.67	0.64	0.68	0.67	0.71	0.71	0.76
130	0.93	0.95	0.93	0.95	0.92	0.95	0.92	0.93	0.88	0.89	0.85	0.85	0.76	0.75	0.77	0.77	0.81	0.81	0.86
135	1.03	1.04	1.02	1.04	1.02	1.03	1.01	1.02	0.97	0.98	0.94	0.95	0.86	0.84	0.87	0.87	0.91	0.91	0.95
140	1.09	1.12	1.10	1.12	1.09	1.11	1.09	1.10	1.08	1.07	1.03	1.04	0.95	0.93	0.96	0.96	1.00	0.99	1.03
145	1.16	1.19	1.17	1.19	1.16	1.19	1.16	1.17	1.14	1.15	1.11	1.12	1.04	1.03	1.05	1.04	1.08	1.09	1.11
150	1.22	1.26	1.24	1.26	1.22	1.25	1.22	1.24	1.20	1.21	1.18	1.19	1.12	1.10	1.12	1.12	1.15	1.14	1.18
155	1.30	1.31	1.30	1.30	1.29	1.30	1.30	1.29	1.26	1.28	1.26	1.26	1.20	1.17	1.19	1.19	1.22	1.21	1.24
160	1.34	1.36	1.33	1.35	1.32	1.34	1.32	1.34	1.31	1.32	1.30	1.31	1.27	1.25	1.26	1.25	1.28	1.27	1.30
165	1.38	1.40	1.37	1.39	1.36	1.39	1.36	1.38	1.36	1.38	1.35	1.36	1.34	1.30	1.33	1.31	1.34	1.32	1.36
170	1.42	1.44	1.42	1.42	1.41	1.42	1.41	1.42	1.40	1.41	1.39	1.41	1.40	1.36	1.39	1.37	1.39	1.37	1.40
175	1.45	1.46	1.42	1.44	1.42	1.44	1.43	1.45	1.42	1.45	1.43	1.45	1.45	1.42	1.43	1.42	1.43	1.42	1.44
180	1.48	1.46	1.44	1.45	1.43	1.44	1.45	1.45	1.45	1.45	1.47	1.47	1.47	1.45	1.45	1.43	1.45	1.43	1.45

C Range: 0 - 360DEG
C Interval: 15.0DEG
Test Speed: HIGH
Temperature:24.7DEG
Operators:Lingxin Xie
Test Date:2022-07-20

γ Range: 0 - 180DEG
γ Interval: 1.0DEG
Test System:EVERFINE GO-2000A_V1 SYSTEM V2.0.291
Humidity:54.2%
Test Distance:10.149m [K=1.0000]
Remarks:

Checker: Jianfei Wu

Assessor: Lijian Jiang

LUMINOUS DISTRIBUTION INTENSITY DATA

Table--2

UNIT: cd

C (DEG) γ (DEG)	285	300	315	330	345													
0	317	316	318	318	320													
5	315	315	316	316	317													
10	311	311	311	311	312													
15	305	304	304	304	304													
20	296	295	294	294	294													
25	285	283	282	281	281													
30	271	270	268	267	266													
35	256	253	251	250	249													
40	238	235	232	231	230													
45	218	215	211	209	208													
50	195	191	188	186	184													
55	171	167	164	161	159													
60	145	141	137	134	132													
65	117	113	109	106	104													
70	88.4	84.5	80.3	77.8	75.2													
75	59.8	56.2	52.6	50.6	48.4													
80	32.9	30.5	28.1	27.2	25.9													
85	11.5	11.3	10.8	11.0	10.8													
90	1.46	2.24	2.69	3.18	3.26													
95	0.18	0.34	0.56	0.70	0.74													
100	0.25	0.28	0.31	0.34	0.38													
105	0.33	0.37	0.37	0.38	0.38													
110	0.43	0.47	0.47	0.48	0.47													
115	0.53	0.57	0.56	0.58	0.55													
120	0.64	0.67	0.66	0.68	0.66													
125	0.75	0.78	0.77	0.79	0.76													
130	0.85	0.88	0.86	0.88	0.86													
135	0.93	0.96	0.95	0.98	0.95													
140	1.03	1.04	1.03	1.06	1.03													
145	1.09	1.12	1.10	1.14	1.11													
150	1.16	1.19	1.17	1.20	1.20													
155	1.22	1.25	1.23	1.26	1.25													
160	1.29	1.30	1.30	1.32	1.31													
165	1.33	1.36	1.35	1.37	1.37													
170	1.38	1.40	1.38	1.41	1.41													
175	1.42	1.44	1.42	1.45	1.43													
180	1.45	1.45	1.46	1.47	1.48													

C Range: 0 - 360DEG
 C Interval: 15.0DEG
 Test Speed: HIGH
 Temperature:24.7DEG
 Operators:Lingxin Xie
 Test Date:2022-07-20

Checker: Jianfei Wu

γ Range: 0 - 180DEG
 γ Interval: 1.0DEG
 Test System:EVERFINE GO-2000A_V1 SYSTEM V2.0.291
 Humidity:54.2%
 Test Distance:10.149m [K=1.0000]
 Remarks:

Assessor: Lijian Jiang